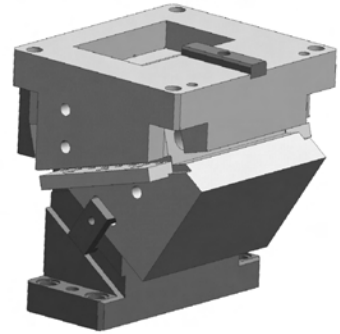
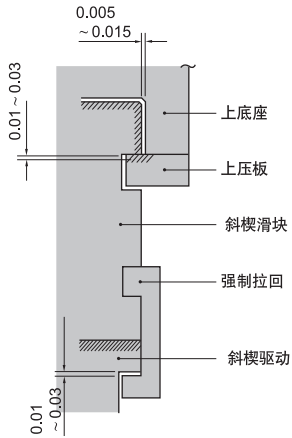


### KEAC概要

- 此结构具备高刚性。
- 安装面宽度有65、100、200。
- 角度为 $0^{\circ} \sim 70^{\circ}$ ，(5° 间隙)。

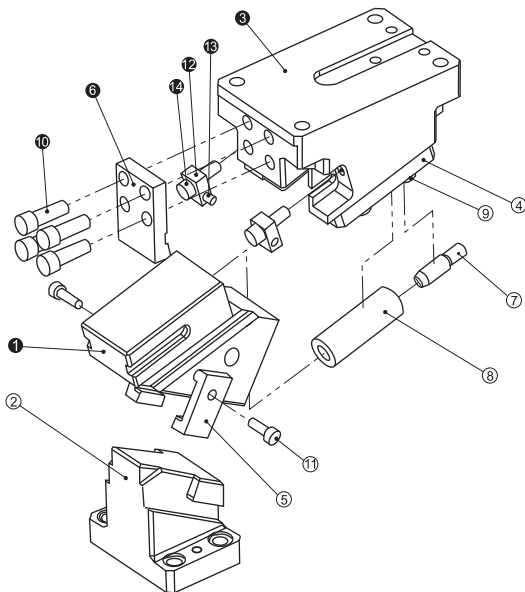


### ■ 滑块结构及强制拉回结构



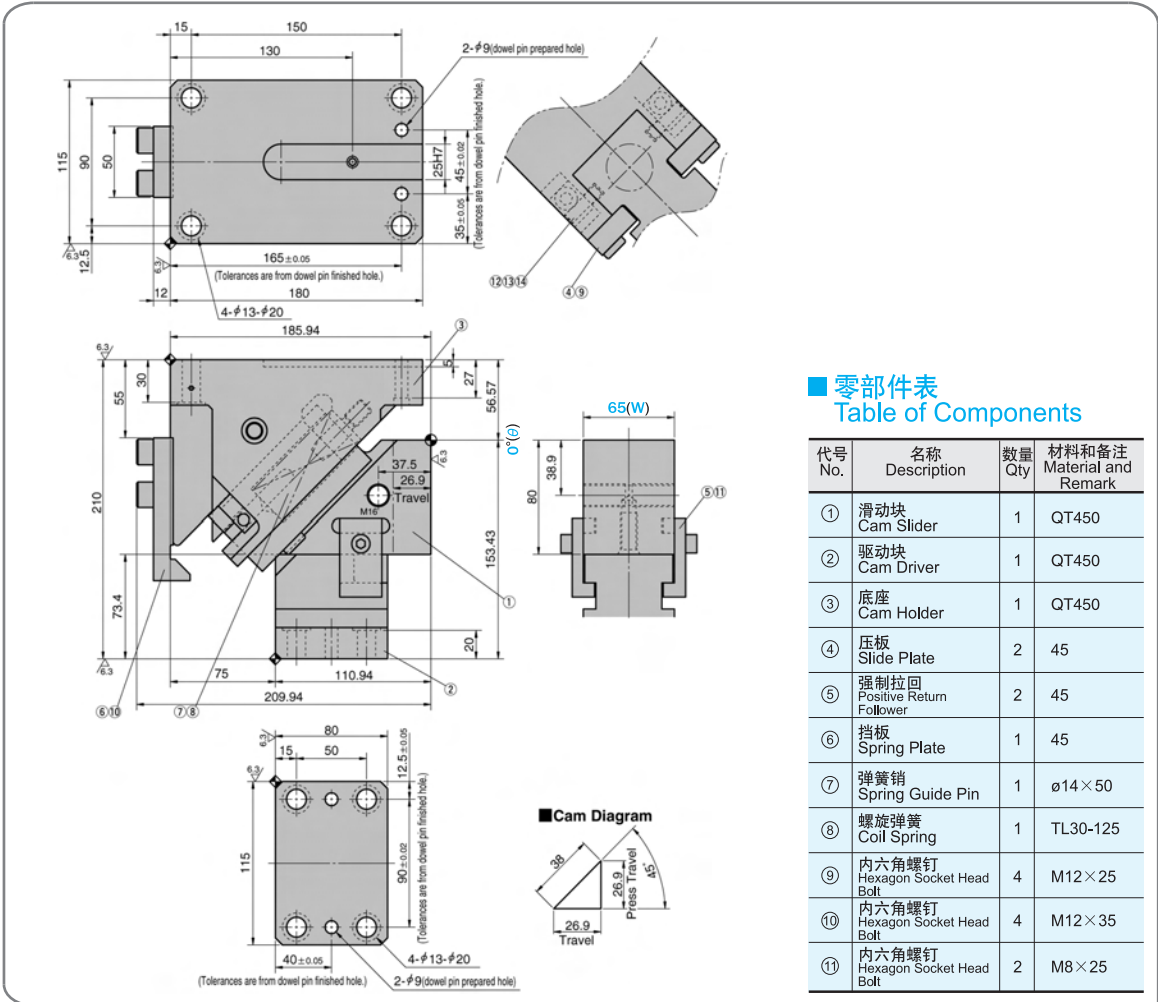
- 上底座和滑块的间隙单侧加工至 $0.005 \sim 0.015$ 。由此实现高刚性。
- 滑块(强制拉回)和驱动间的间隙加工至 $0.01 \sim 0.03$ 。

### ■ KEAC的结构和拆解、装配



- KEAC的分解方法
  - 1、松开⑫卸下⑬及⑭。
  - 2、松开⑩卸下⑥。
  - 3、在后方将①从③上拔出。
- KEAC的装配方法
  - 1) 装配顺序与拆解相反。
  - ◆ 充分确认滑动部位是否无异物后涂上润滑脂并进行装配。
  - ◆ 由于对滑块和上底座的间隙进行管理因此要确认刻印的序号后进行装配。
  - ◆ 拆解、装配后要充分注意不要忘记紧固螺栓。

**KEAC65-00**



■ 零部件表  
Table of Components

代号 No.	名称 Description	数量 Qty	材料和备注 Material and Remark
①	滑动块 Cam Slider	1	QT450
②	驱动块 Cam Driver	1	QT450
③	底座 Cam Holder	1	QT450
④	压板 Slide Plate	2	45
⑤	强制拉回 Positive Return Follower	2	45
⑥	挡板 Spring Plate	1	45
⑦	弹簧销 Spring Guide Pin	1	φ14 × 50
⑧	螺旋弹簧 Coil Spring	1	TL30-125
⑨	内六角螺钉 Hexagon Socket Head Bolt	4	M12 × 25
⑩	内六角螺钉 Hexagon Socket Head Bolt	4	M12 × 35
⑪	内六角螺钉 Hexagon Socket Head Bolt	2	M8 × 25

行程 Travel S	加工力 Working Force kN(tonf)		弹簧力 Spring Force N(kgf)		总重量 Total Weight kg	代号 Catalog No.	(W)	(θ)	销孔孔径选择 Selection of Dowel Pin Hole Diameter(H7)			SANKYO 代号对照 Catalog No.
	标准加工力 (100万回) Standard Working Force (one million strokes)	允许加工力 (30万回) Allowable Working Force (300,000 strokes)	初压 Initial Load	终压 Final Load					驱动块 Cam Driver	底座 Cam Holder	驱动块/底座 Cam Driver/ Cam Holder	
26.9	19.6 (2.0)	39.2 (4.0)	165.9 (16.9)	1066.5 (108.9)	19.5	KEAC	65	00	10-12-13			SOUK



Order

Catalog No. (W) - (θ) - 销孔直径  
Dowel Pin Hole Diameter

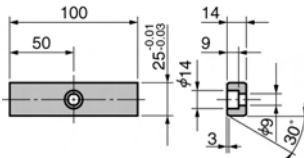
KEAC 65 - 00

KEAC 65 - 00 - HK13

KEAC 65 - 00 - HDK13

- ...销孔预钻孔  
Dowel Pin Prepared hole
- ...销孔13 (H7) 仅驱动块  
Dowel Pin hole h13(H7) for cam driver only
- ...销孔13 (H7) 驱动块和底座  
Dowel Pin hole h13(H7) for both holder and driver

■ 键详图 Key Specification



# KEAC65-05

**Cam Diagram**

Press Travel: 29.2  
Travel: 27  
Angle: 45°

### 零部件表 Table of Components

代号 No.	名称 Description	数量 Qty	材料和备注 Material and Remark
①	滑动块 Cam Slider	1	QT450
②	驱动块 Cam Driver	1	QT450
③	底座 Cam Holder	1	QT450
④	压板 Slide Plate	2	45
⑤	强制拉回 Positive Return Follower	2	45
⑥	挡板 Spring Plate	1	45
⑦	弹簧销 Spring Guide Pin	1	φ14×50
⑧	螺旋弹簧 Coil Spring	1	TL30-125
⑨	内六角螺钉 Hexagon Socket Head Bolt	4	M12×25
⑩	内六角螺钉 Hexagon Socket Head Bolt	4	M12×35
⑪	内六角螺钉 Hexagon Socket Head Bolt	2	M8×25

行程 Travel S	加工力 Working Force kN(tonf)		弹簧力 Spring Force N(kgf)		总重量 Total Weight kg	代号 Catalog No.	(W)	(θ)	销孔孔径选择 Selection of Dowel Pin Hole Diameter(H7)			SANKYO 代号对照 Catalog No.
	标准加工力 (100万回) Standard Working Force (one million strokes)	允许加工力 (30万回) Allowable Working Force (300,000 strokes)	初压 Initial Load	终压 Final Load					驱动块 Cam Driver	底座 Cam Holder	驱动块/底座 Cam Driver/ Cam Holder	
27.0	19.6 (2.0)	39.2 (4.0)	237.0 (24.2)	1137.6 (116.2)	19.8	KEAC	65	05	10-12-13			SOUK



Order

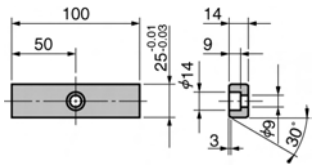
Catalog No. **KEAC** (W) **65** - (θ) **05** - 销孔直径  
Dowel Pin Hole Diameter

**KEAC 65 - 05 - HK13**

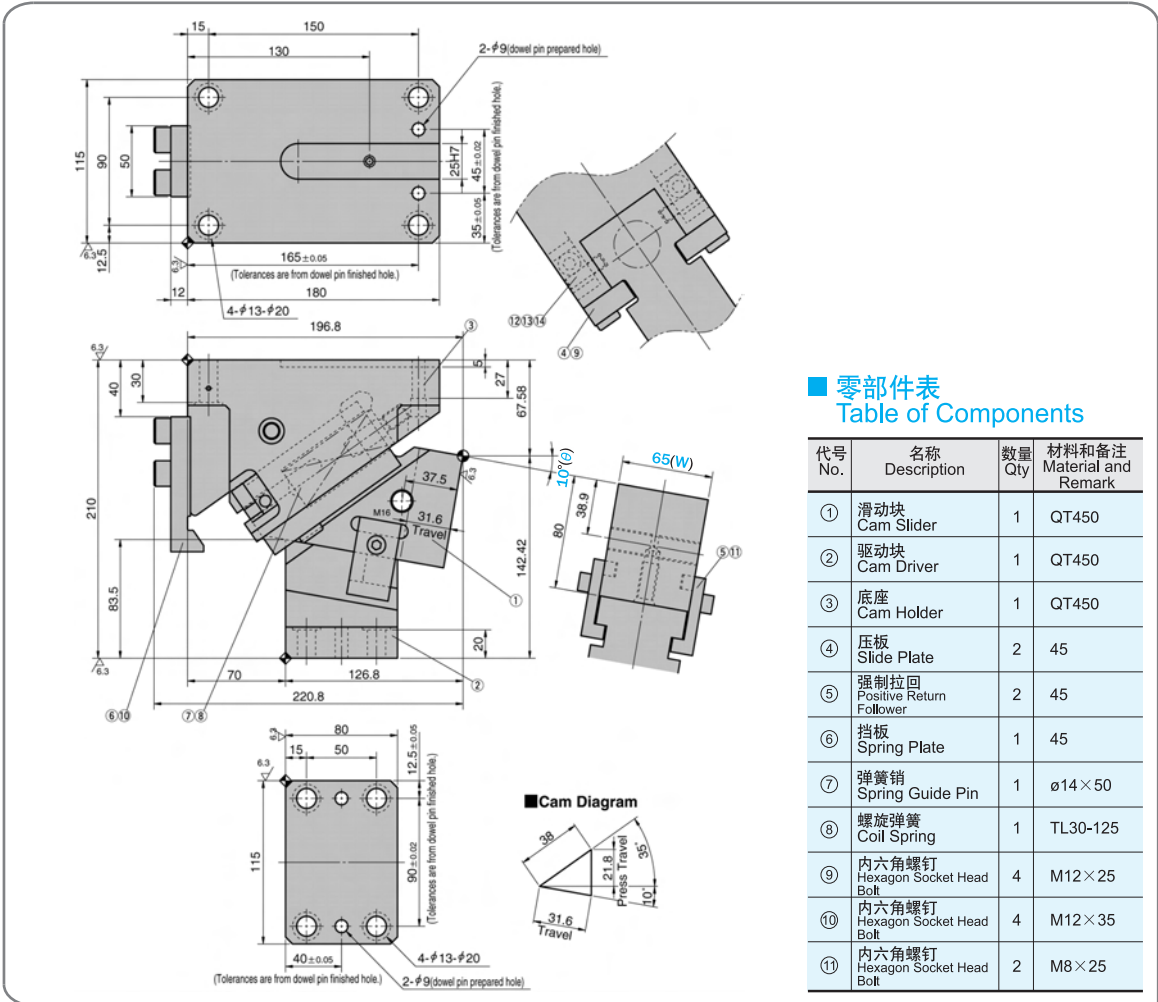
**KEAC 65 - 05 - HDK13**

- ...销孔预钻孔  
Dowel Pin Prepard hole
- ...销孔13 (H7) 仅驱动块  
Dowel Pin hole h13(H7) for cam driver only
- ...销孔13 (H7) 驱动块和底座  
Dowel Pin hole h13(H7) for both holder and driver

### 键详图 Key Specification



**KEAC65-10**



■ 零部件表  
Table of Components

代号 No.	名称 Description	数量 Qty	材料和备注 Material and Remark
①	滑动块 Cam Slider	1	QT450
②	驱动块 Cam Driver	1	QT450
③	底座 Cam Holder	1	QT450
④	压板 Slide Plate	2	45
⑤	强制拉回 Positive Return Follower	2	45
⑥	挡板 Spring Plate	1	45
⑦	弹簧销 Spring Guide Pin	1	φ14×50
⑧	螺旋弹簧 Coil Spring	1	TL30-125
⑨	内六角螺钉 Hexagon Socket Head Bolt	4	M12×25
⑩	内六角螺钉 Hexagon Socket Head Bolt	4	M12×35
⑪	内六角螺钉 Hexagon Socket Head Bolt	2	M8×25

行程 Travel S	加工力 Working Force kN(tonf)		弹簧力 Spring Force N(kgf)		总重量 Total Weight kg	代号 Catalog No.	(W)	(θ)	销孔孔径选择 Selection of Dowel Pin Hole Diameter(H7)			SANKYO 代号对照 Catalog No.
	标准加工力 (100万回) Standard Working Force (one million strokes)	允许加工力 (30万回) Allowable Working Force (300,000 strokes)	初压 Initial Load	终压 Final Load					驱动块 Cam Driver	底座 Cam Holder	驱动块/底座 Cam Driver/ Cam Holder	
31.6	19.6 (2.0)	39.2 (4.0)	237.0 (24.2)	1137.6 (116.2)	19.3	KEAC	65	10	10-12-13			SOUK



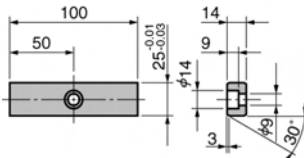
Order

Catalog No. (W) - (θ) - 销孔直径  
Dowel Pin Hole Diameter

KEAC 65 - 10  
KEAC 65 - 10 - HK13  
KEAC 65 - 10 - HDK13

...销孔预钻孔  
Dowel Pin Prepard hole  
...销孔13 (H7) 仅驱动块  
Dowel Pin hole h13(H7) for cam driver only  
...销孔13 (H7) 驱动块和底座  
Dowel Pin hole h13(H7) for both holder and driver

■ 键详图 Key Specification



KEAC  
65



# KEAC65-15

**■ 零部件表 Table of Components**

代号 No.	名称 Description	数量 Qty	材料和备注 Material and Remark
①	滑动块 Cam Slider	1	QT450
②	驱动块 Cam Driver	1	QT450
③	底座 Cam Holder	1	QT450
④	压板 Slide Plate	2	45
⑤	强制拉回 Positive Return Follower	2	45
⑥	挡板 Spring Plate	1	45
⑦	弹簧销 Spring Guide Pin	1	φ14×50
⑧	螺旋弹簧 Coil Spring	1	TL30-125
⑨	内六角螺钉 Hexagon Socket Head Bolt	4	M12×25
⑩	内六角螺钉 Hexagon Socket Head Bolt	4	M12×35
⑪	内六角螺钉 Hexagon Socket Head Bolt	2	M8×25

行程 Travel S	加工力 Working Force kN(tonf)		弹簧力 Spring Force N(kgf)		总重量 Total Weight kg	代号 Catalog No.	(W)	(θ)	销孔孔径选择 Selection of Dowel Pin Hole Diameter(H7)			SANKY0 代号对照 Catalog No.
	标准加工力 (100万回) Standard Working Force (one million strokes)	允许加工力 (30万回) Allowable Working Force (300,000 strokes)	初压 Initial Load	终压 Final Load					驱动块 Cam Driver	底座 Cam Holder	驱动块/底座 Cam Driver/ Cam Holder	
32.2	19.6 (2.0)	39.2 (4.0)	237.0 (24.2)	1137.6 (116.2)	19.6	KEAC	65	15	10-12-13			SOUK



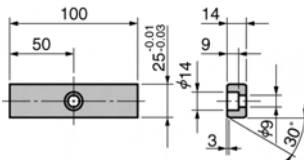
Order

Catalog No. (W) - (θ) - 销孔直径 Dowel Pin Hole Diameter

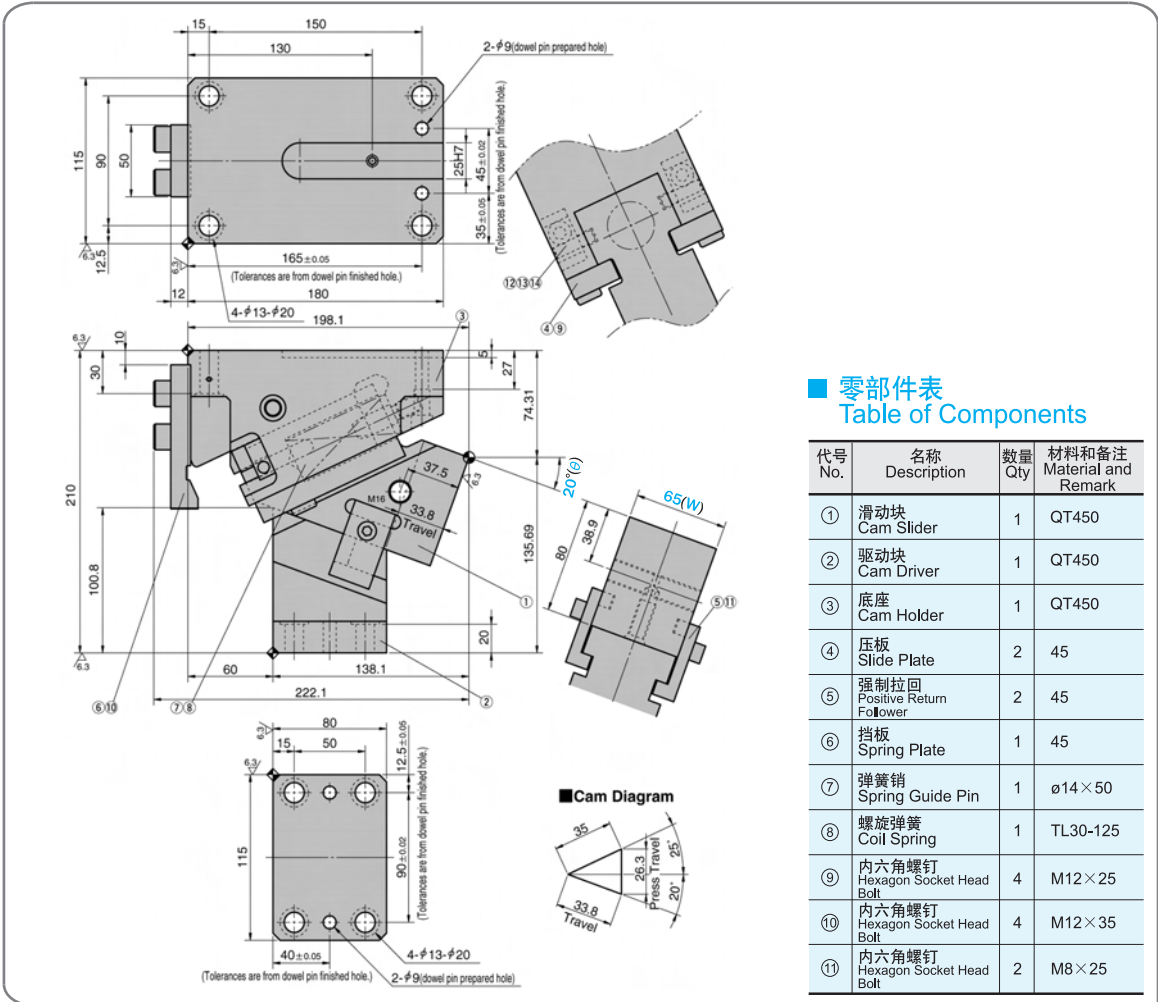
- KEAC 65 - 15
- KEAC 65 - 15 - HK13
- KEAC 65 - 15 - HDK13

- ...销孔预钻孔 Dowel Pin Prepared hole
- ...销孔13 (H7) 仅驱动块 Dowel Pin hole h13(H7) for cam driver only
- ...销孔13 (H7) 驱动块和底座 Dowel Pin hole h13(H7) for both holder and driver

■ 键详图 Key Specification



**KEAC65-20**



■ 零部件表  
Table of Components

代号 No.	名称 Description	数量 Qty	材料和备注 Material and Remark
①	滑动块 Cam Slider	1	QT450
②	驱动块 Cam Driver	1	QT450
③	底座 Cam Holder	1	QT450
④	压板 Slide Plate	2	45
⑤	强制拉回 Positive Return Follower	2	45
⑥	挡板 Spring Plate	1	45
⑦	弹簧销 Spring Guide Pin	1	φ14×50
⑧	螺旋弹簧 Coil Spring	1	TL30-125
⑨	内六角螺钉 Hexagon Socket Head Bolt	4	M12×25
⑩	内六角螺钉 Hexagon Socket Head Bolt	4	M12×35
⑪	内六角螺钉 Hexagon Socket Head Bolt	2	M8×25

行程 Travel S	加工力 Working Force kN(tonf)		弹簧力 Spring Force N(kgf)		总重量 Total Weight kg	代号 Catalog No.	(W)	(θ)	销孔孔径选择 Selection of Dowel Pin Hole Diameter(H7)			SANKYO 代号对照 Catalog No.
	标准加工力 (100万回) Standard Working Force (one million strokes)	允许加工力 (30万回) Allowable Working Force (300,000 strokes)	初压 Initial Load	终压 Final Load					驱动块 Cam Driver	底座 Cam Holder	驱动块/底座 Cam Driver/ Cam Holder	
33.8	19.6 (2.0)	39.2 (4.0)	308.1 (31.5)	1137.6 (116.2)	18.1	KEAC	65	20	10-12-13			SOUK



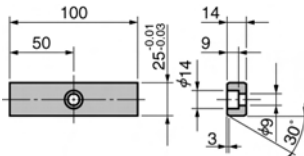
Order

Catalog No. (W) - (θ) - 销孔直径  
Dowel Pin Hole Diameter

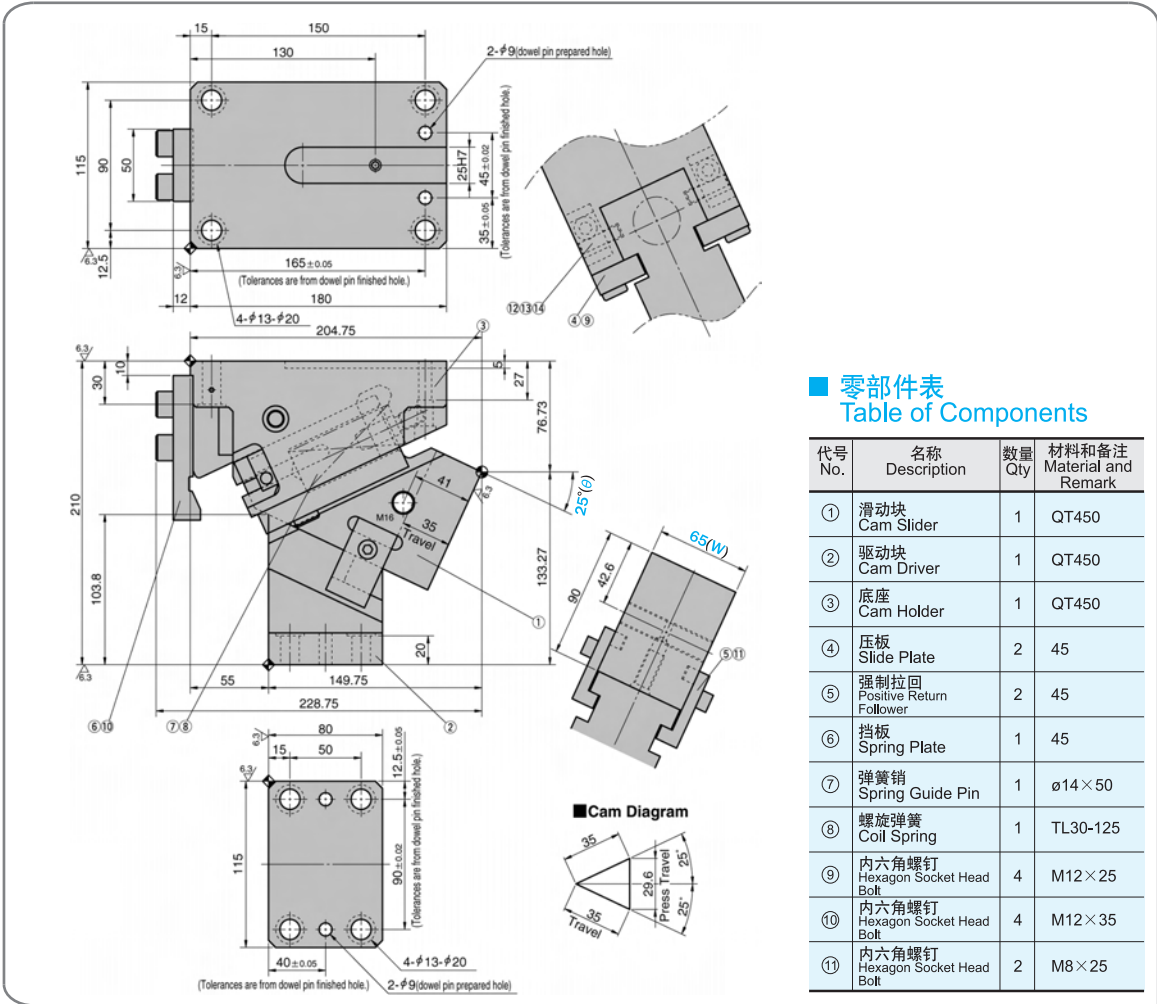
KEAC 65 - 20  
KEAC 65 - 20 - HK13  
KEAC 65 - 20 - HDK13

- ...销孔预钻孔  
Dowel Pin Prepared hole
- ...销孔13 (H7) 仅驱动块  
Dowel Pin hole h13(H7) for cam driver only
- ...销孔13 (H7) 驱动块和底座  
Dowel Pin hole h13(H7) for both holder and driver

■ 键详图 Key Specification



# KEAC65-25



### ■ 零部件表 Table of Components

代号 No.	名称 Description	数量 Qty	材料和备注 Material and Remark
①	滑动块 Cam Slider	1	QT450
②	驱动块 Cam Driver	1	QT450
③	底座 Cam Holder	1	QT450
④	压板 Slide Plate	2	45
⑤	强制拉回 Positive Return Follower	2	45
⑥	挡板 Spring Plate	1	45
⑦	弹簧销 Spring Guide Pin	1	φ14 × 50
⑧	螺旋弹簧 Coil Spring	1	TL30-125
⑨	内六角螺钉 Hexagon Socket Head Bolt	4	M12 × 25
⑩	内六角螺钉 Hexagon Socket Head Bolt	4	M12 × 35
⑪	内六角螺钉 Hexagon Socket Head Bolt	2	M8 × 25

行程 Travel S	加工力 Working Force kN(tonf)		弹簧力 Spring Force N(kgf)		总重量 Total Weight kg	代号 Catalog No.	(W)	(θ)	销孔孔径选择 Selection of Dowel Pin Hole Diameter(H7)			SANKYO 代号对照 Catalog No.
	标准加工力 (100万回) Standard Working Force (one million strokes)	允许加工力 (30万回) Allowable Working Force (300,000 strokes)	初压 Initial Load	终压 Final Load					驱动块 Cam Driver	底座 Cam Holder	驱动块/底座 Cam Driver/ Cam Holder	
35.0	19.6 (2.0)	39.2 (4.0)	308.1 (31.5)	1137.6 (116.2)	18.4	KEAC	65	25	10-12-13			SOUK



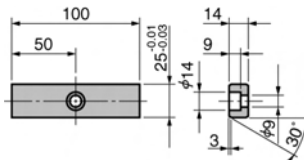
Order

Catalog No. (W) - (θ) - 销孔直径  
Dowel Pin Hole Diameter

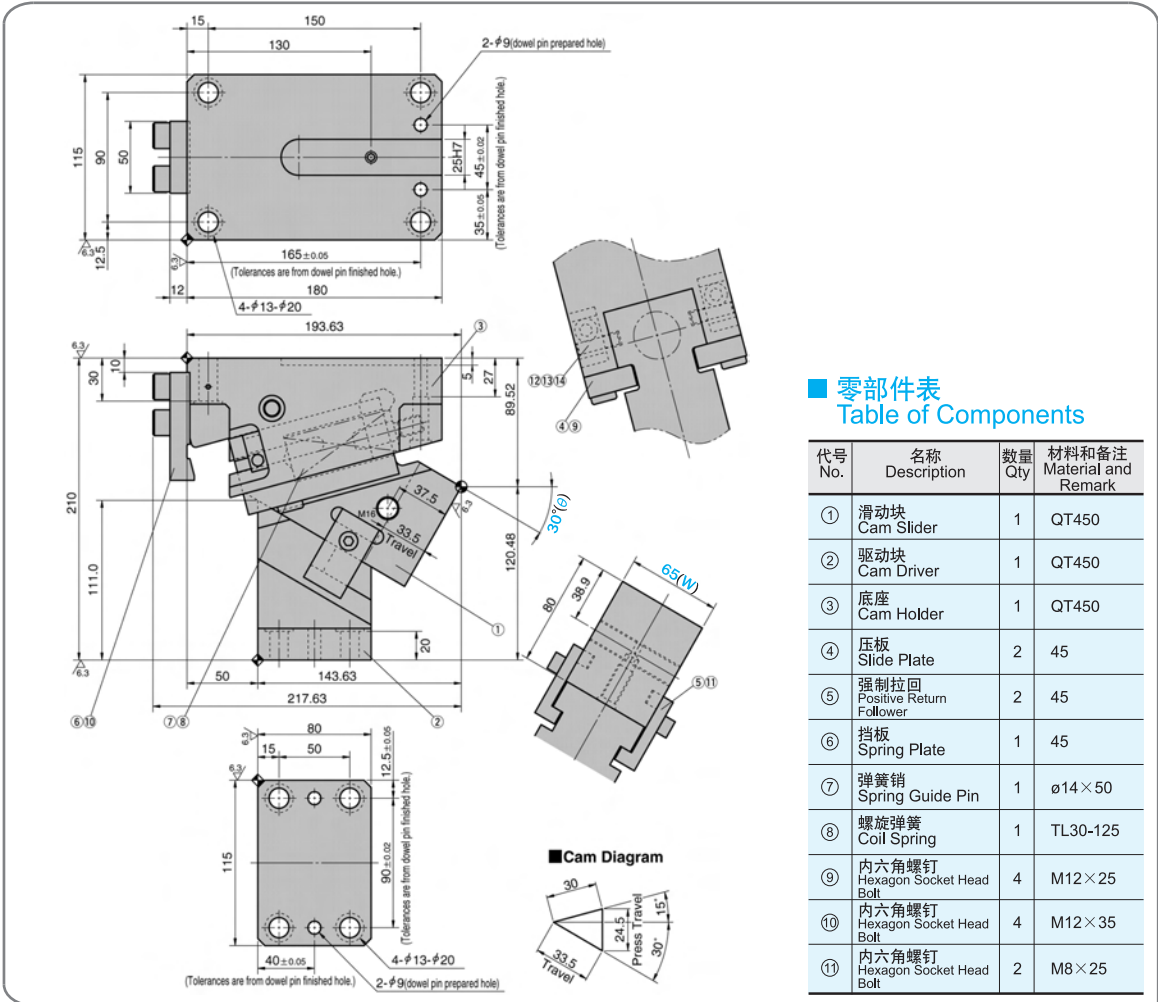
KEAC 65 - 25  
KEAC 65 - 25 - HK13  
KEAC 65 - 25 - HDK13

…销孔预钻孔  
Dowel Pin Prepard hole  
…销孔13 (H7) 仅驱动块  
Dowel Pin hole h13(H7) for cam driver only  
…销孔13 (H7) 驱动块和底座  
Dowel Pin hole h13(H7) for both holder and driver

### ■ 键详图 Key Specification



**KEAC65-30**



■ 零部件表  
Table of Components

代号 No.	名称 Description	数量 Qty	材料和备注 Material and Remark
①	滑动块 Cam Slider	1	QT450
②	驱动块 Cam Driver	1	QT450
③	底座 Cam Holder	1	QT450
④	压板 Slide Plate	2	45
⑤	强制拉回 Positive Return Follower	2	45
⑥	挡板 Spring Plate	1	45
⑦	弹簧销 Spring Guide Pin	1	φ14×50
⑧	螺旋弹簧 Coil Spring	1	TL30-125
⑨	内六角螺钉 Hexagon Socket Head Bolt	4	M12×25
⑩	内六角螺钉 Hexagon Socket Head Bolt	4	M12×35
⑪	内六角螺钉 Hexagon Socket Head Bolt	2	M8×25

行程 Travel S	加工力 Working Force kN(tonf)		弹簧力 Spring Force N(kgf)		总重量 Total Weight kg	代号 Catalog No.	(W)	(θ)	销孔孔径选择 Selection of Dowel Pin Hole Diameter(H7)			SANKYO 代号对照 Catalog No.
	标准加工力 (100万回) Standard Working Force (one million strokes)	允许加工力 (30万回) Allowable Working Force (300,000 strokes)	初压 Initial Load	终压 Final Load					驱动块 Cam Driver	底座 Cam Holder	驱动块/底座 Cam Driver/ Cam Holder	
33.5	23.5 (2.4)	47.0 (4.8)	426.6 (43.6)	1137.6 (116.2)	17.7	KEAC	65	30	10-12-13			SOUK



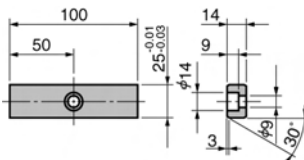
Order

Catalog No. (W) - (θ) - 销孔直径  
Dowel Pin Hole Diameter

KEAC 65 - 30  
KEAC 65 - 30 - HK13  
KEAC 65 - 30 - HDK13

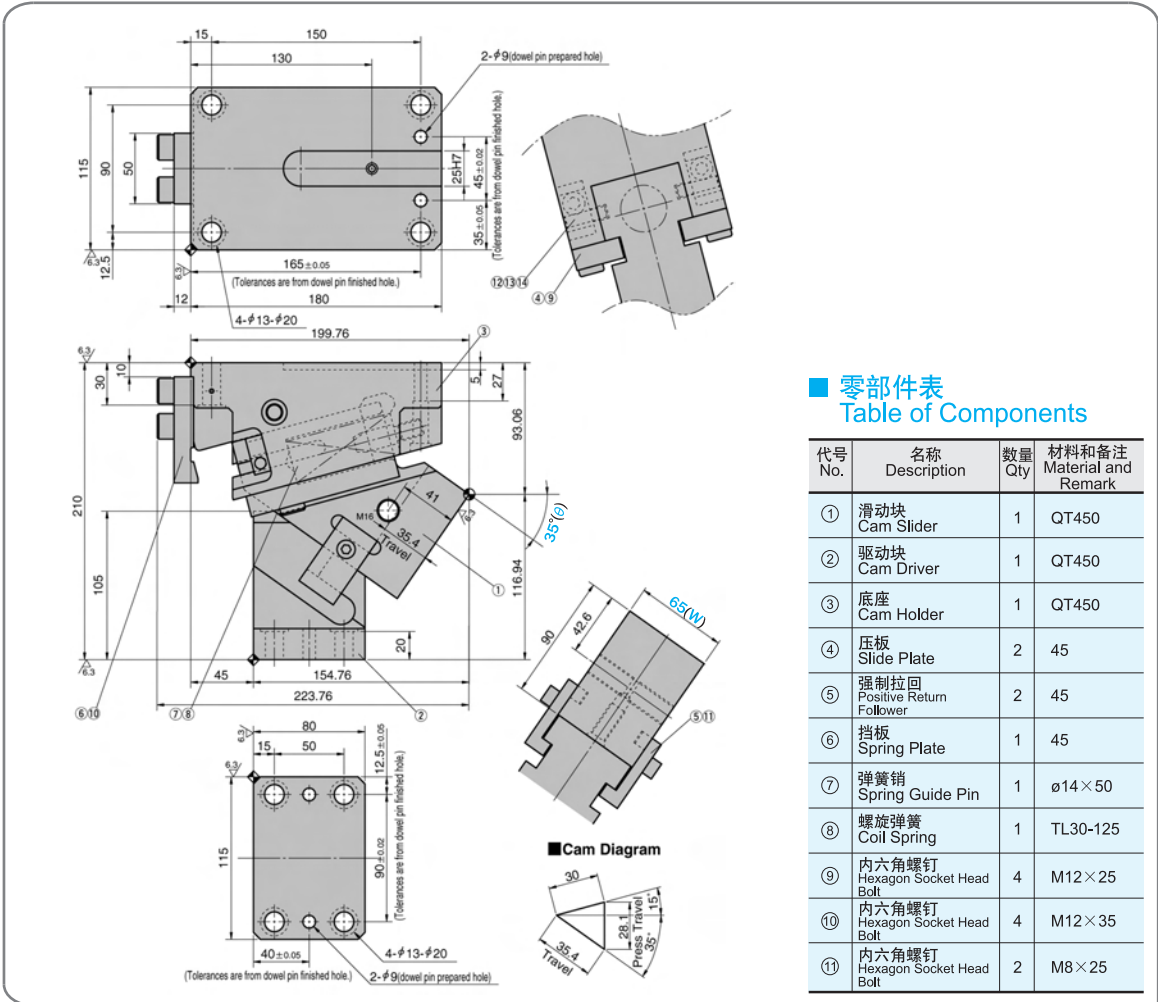
- ...销孔预钻孔  
Dowel Pin Prepard hole
- ...销孔13 (H7) 仅驱动块  
Dowel Pin hole h13(H7) for cam driver only
- ...销孔13 (H7) 驱动块和底座  
Dowel Pin hole h13(H7) for both holder and driver

■ 键详图 Key Specification



KEAC  
65

# KEAC65-35



## ■ 零部件表 Table of Components

代号 No.	名称 Description	数量 Qty	材料和备注 Material and Remark
①	滑动块 Cam Slider	1	QT450
②	驱动块 Cam Driver	1	QT450
③	底座 Cam Holder	1	QT450
④	压板 Slide Plate	2	45
⑤	强制拉回 Positive Return Follower	2	45
⑥	挡板 Spring Plate	1	45
⑦	弹簧销 Spring Guide Pin	1	φ14×50
⑧	螺旋弹簧 Coil Spring	1	TL30-125
⑨	内六角螺钉 Hexagon Socket Head Bolt	4	M12×25
⑩	内六角螺钉 Hexagon Socket Head Bolt	4	M12×35
⑪	内六角螺钉 Hexagon Socket Head Bolt	2	M8×25

行程 Travel S	加工力 Working Force kN(tonf)		弹簧力 Spring Force N(kgf)		总重量 Total Weight kg	代号 Catalog No.	(W)	(θ)	销孔孔径选择 Selection of Dowel Pin Hole Diameter(H7)			SANKY0 代号对照 Catalog No.
	标准加工力 (100万回) Standard Working Force (one million strokes)	允许加工力 (30万回) Allowable Working Force (300,000 strokes)	初压 Initial Load	终压 Final Load					驱动块 Cam Driver	底座 Cam Holder	驱动块/底座 Cam Driver/ Cam Holder	
35.4	23.5 (2.4)	47.0 (4.8)	426.6 (43.6)	1137.6 (116.2)	18.0	KEAC	65	35	10-12-13			SOUK



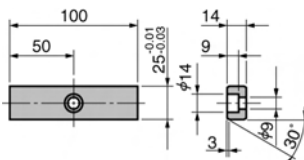
Order

Catalog No. (W) - (θ) - 销孔直径  
Dowel Pin Hole Diameter

KEAC 65 - 35  
KEAC 65 - 35 - HK13  
KEAC 65 - 35 - HDK13

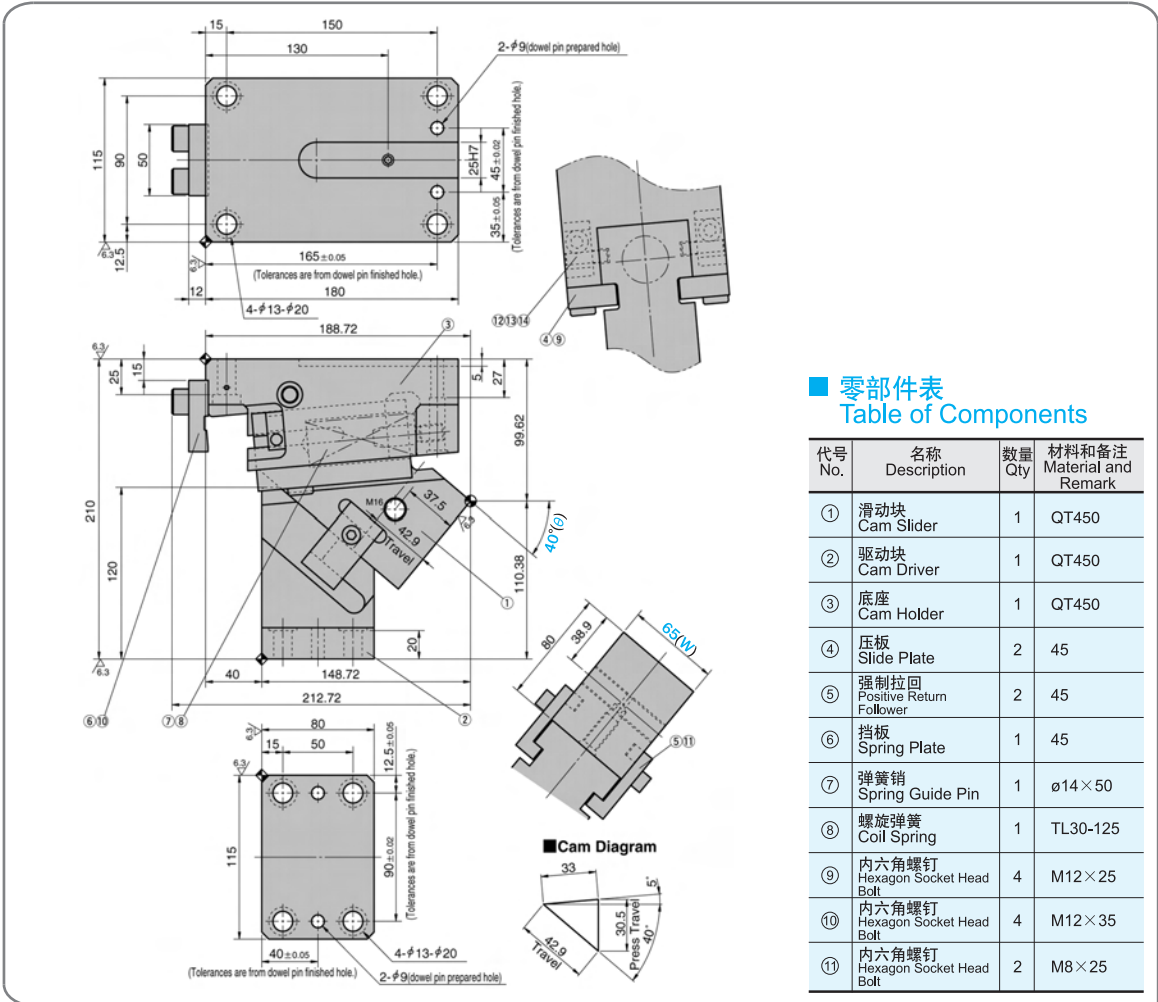
- ...销孔预钻孔  
Dowel Pin Prepared hole
- ...销孔13 (H7) 仅驱动块  
Dowel Pin hole h13(H7) for cam driver only
- ...销孔13 (H7) 驱动块和底座  
Dowel Pin hole h13(H7) for both holder and driver

## ■ 键详图 Key Specification





**KEAC65-40**



■ 零部件表  
Table of Components

代号 No.	名称 Description	数量 Qty	材料和备注 Material and Remark
①	滑动块 Cam Slider	1	QT450
②	驱动块 Cam Driver	1	QT450
③	底座 Cam Holder	1	QT450
④	压板 Slide Plate	2	45
⑤	强制拉回 Positive Return Follower	2	45
⑥	挡板 Spring Plate	1	45
⑦	弹簧销 Spring Guide Pin	1	φ14 × 50
⑧	螺旋弹簧 Coil Spring	1	TL30-125
⑨	内六角螺钉 Hexagon Socket Head Bolt	4	M12 × 25
⑩	内六角螺钉 Hexagon Socket Head Bolt	4	M12 × 35
⑪	内六角螺钉 Hexagon Socket Head Bolt	2	M8 × 25

行程 Travel S	加工力 Working Force kN(tonf)		弹簧力 Spring Force N(kgf)		总重量 Total Weight kg	代号 Catalog No.	(W)	(θ)	销孔孔径选择 Selection of Dowel Pin Hole Diameter(H7)			SANKYO 代号对照 Catalog No.
	标准加工力 (100万回) Standard Working Force (one million strokes)	允许加工力 (30万回) Allowable Working Force (300,000 strokes)	初压 Initial Load	终压 Final Load					驱动块 Cam Driver	底座 Cam Holder	驱动块/底座 Cam Driver/ Cam Holder	
42.9	23.5 (2.4)	47.0 (4.8)	355.5 (36.3)	1137.6 (116.2)	16.9	KEAC	65	40	10-12-13			SOUK



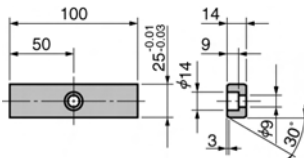
Order

Catalog No. (W) - (θ) - 销孔直径  
Dowel Pin Hole Diameter

KEAC 65 - 40  
KEAC 65 - 40 - HK13  
KEAC 65 - 40 - HDK13

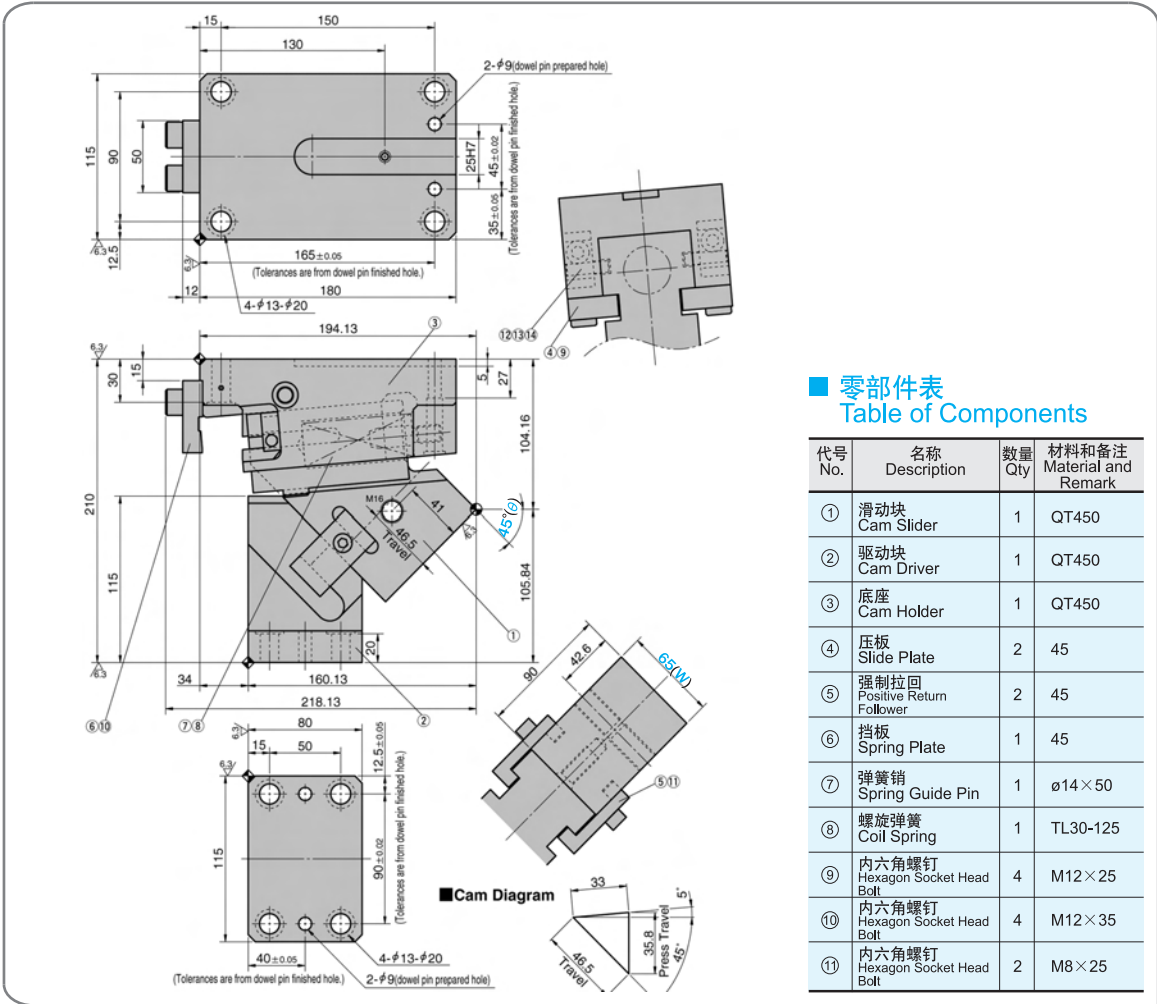
...销孔预钻孔  
Dowel Pin Prepard hole  
...销孔13 (H7) 仅驱动块  
Dowel Pin hole h13(H7) for cam driver only  
...销孔13 (H7) 驱动块和底座  
Dowel Pin hole h13(H7) for both holder and driver

■ 键详图 Key Specification





# KEAC65-45



### ■ 零部件表 Table of Components

代号 No.	名称 Description	数量 Qty	材料和备注 Material and Remark
①	滑动块 Cam Slider	1	QT450
②	驱动块 Cam Driver	1	QT450
③	底座 Cam Holder	1	QT450
④	压板 Slide Plate	2	45
⑤	强制拉回 Positive Return Follower	2	45
⑥	挡板 Spring Plate	1	45
⑦	弹簧销 Spring Guide Pin	1	φ14×50
⑧	螺旋弹簧 Coil Spring	1	TL30-125
⑨	内六角螺钉 Hexagon Socket Head Bolt	4	M12×25
⑩	内六角螺钉 Hexagon Socket Head Bolt	4	M12×35
⑪	内六角螺钉 Hexagon Socket Head Bolt	2	M8×25

行程 Travel S	加工力 Working Force kN(tonf)		弹簧力 Spring Force N(kgf)		总重量 Total Weight kg	代号 Catalog No.	(W)	(θ)	销孔孔径选择 Selection of Dowel Pin Hole Diameter(H7)			SANKYO 代号对照 Catalog No.
	标准加工力 (100万回) Standard Working Force (one million strokes)	允许加工力 (30万回) Allowable Working Force (300,000 strokes)	初压 Initial Load	终压 Final Load					驱动块 Cam Driver	底座 Cam Holder	驱动块/底座 Cam Driver/ Cam Holder	
46.5	23.5 (2.4)	47.0 (4.8)	355.5 (36.3)	1137.6 (116.2)	17.1	KEAC	65	45	10-12-13			SOUK



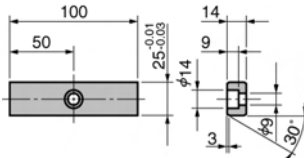
Order

Catalog No. (W) - (θ) - 销孔直径  
Dowel Pin Hole Diameter

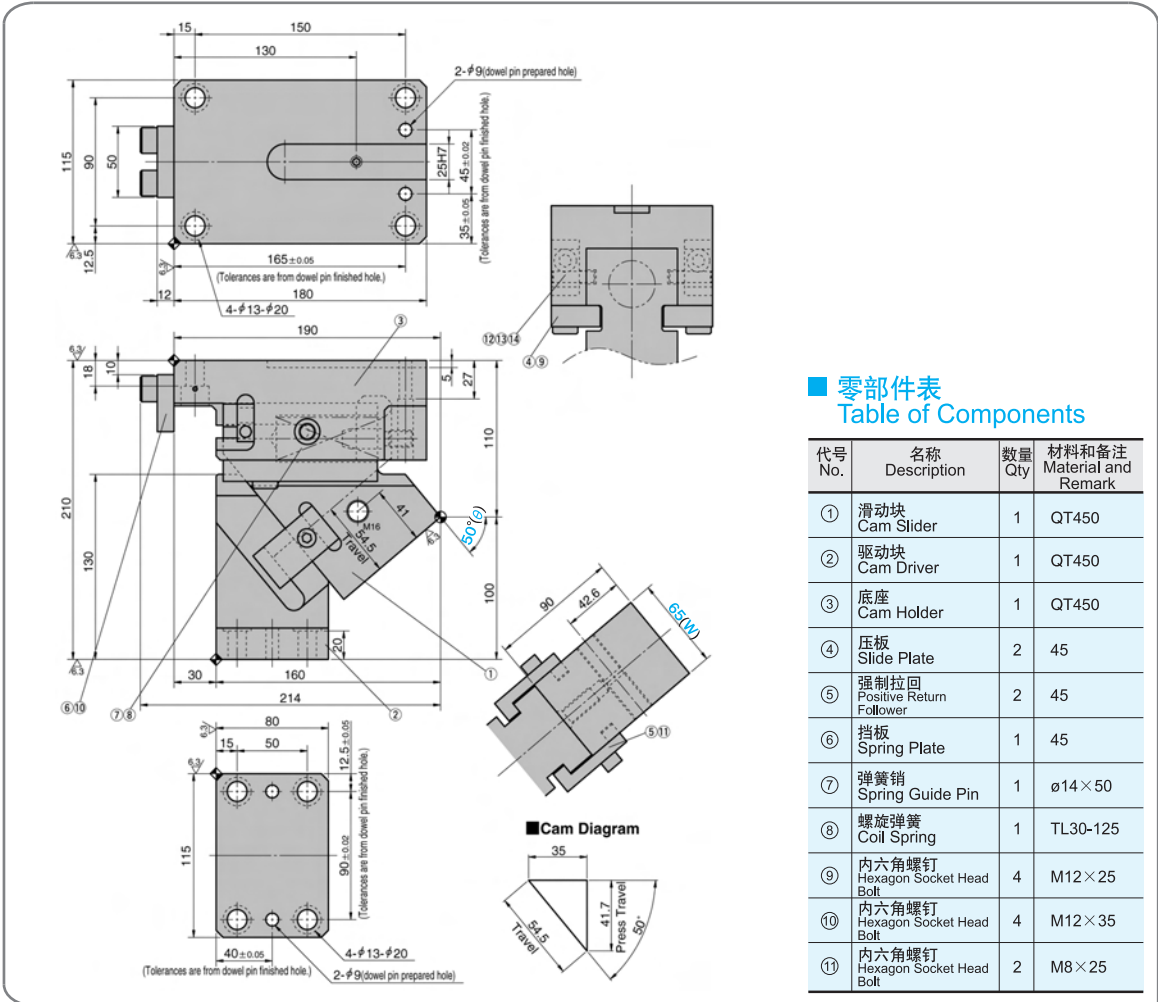
KEAC 65 - 45  
KEAC 65 - 45 - HK13  
KEAC 65 - 45 - HDK13

- ...销孔预钻孔  
Dowel Pin Prepard hole
- ...销孔13 (H7) 仅驱动块  
Dowel Pin hole h13(H7) for cam driver only
- ...销孔13 (H7) 驱动块和底座  
Dowel Pin hole h13(H7) for both holder and driver

### ■ 键详图 Key Specification



**KEAC65-50**



■ 零部件表  
Table of Components

代号 No.	名称 Description	数量 Qty	材料和备注 Material and Remark
①	滑动块 Cam Slider	1	QT450
②	驱动块 Cam Driver	1	QT450
③	底座 Cam Holder	1	QT450
④	压板 Slide Plate	2	45
⑤	强制拉回 Positive Return Follower	2	45
⑥	挡板 Spring Plate	1	45
⑦	弹簧销 Spring Guide Pin	1	φ14×50
⑧	螺旋弹簧 Coil Spring	1	TL30-125
⑨	内六角螺钉 Hexagon Socket Head Bolt	4	M12×25
⑩	内六角螺钉 Hexagon Socket Head Bolt	4	M12×35
⑪	内六角螺钉 Hexagon Socket Head Bolt	2	M8×25

行程 Travel S	加工力 Working Force kN(tonf)		弹簧力 Spring Force N(kgf)		总重量 Total Weight kg	代号 Catalog No.	(W)	(θ)	销孔孔径选择 Selection of Dowel Pin Hole Diameter(H7)			SANKY0 代号对照 Catalog No.
	标准加工力 (100万回) Standard Working Force (one million strokes)	允许加工力 (30万回) Allowable Working Force (300,000 strokes)	初压 Initial Load	终压 Final Load					驱动块 Cam Driver	底座 Cam Holder	驱动块/底座 Cam Driver/ Cam Holder	
54.5	29.4 (3.0)	58.8 (6.0)	308.1 (31.5)	1137.6 (116.2)	16.8	KEAC	65	50	10-12-13			SOUK



Order

Catalog No. (W) - (θ) - 销孔直径  
Dowel Pin Hole Diameter

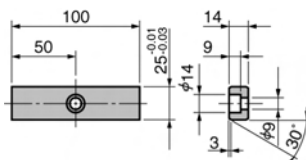
KEAC 65 - 50

KEAC 65 - 50 - HK13

KEAC 65 - 50 - HDK13

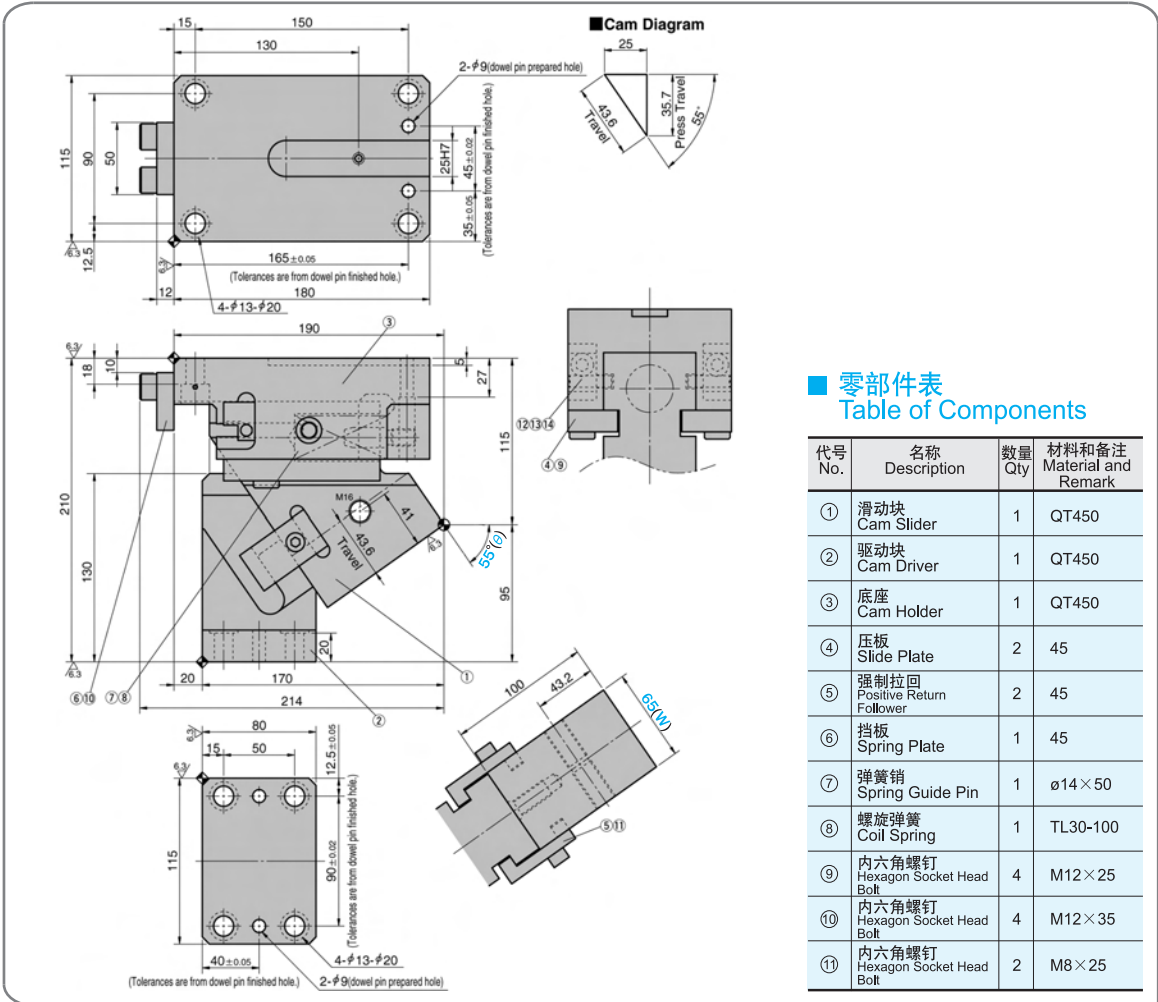
- ...销孔预钻孔  
Dowel Pin Prepard hole
- ...销孔13 (H7) 仅驱动块  
Dowel Pin hole h13(H7) for cam driver only
- ...销孔13 (H7) 驱动块和底座  
Dowel Pin hole h13(H7) for both holder and driver

■ 键详图 Key Specification



KEAC  
65

# KEAC65-55



### 零部件表 Table of Components

代号 No.	名称 Description	数量 Qty	材料和备注 Material and Remark
①	滑动块 Cam Slider	1	QT450
②	驱动块 Cam Driver	1	QT450
③	底座 Cam Holder	1	QT450
④	压板 Slide Plate	2	45
⑤	强制拉回 Positive Return Follower	2	45
⑥	挡板 Spring Plate	1	45
⑦	弹簧销 Spring Guide Pin	1	φ14×50
⑧	螺旋弹簧 Coil Spring	1	TL30-100
⑨	内六角螺钉 Hexagon Socket Head Bolt	4	M12×25
⑩	内六角螺钉 Hexagon Socket Head Bolt	4	M12×35
⑪	内六角螺钉 Hexagon Socket Head Bolt	2	M8×25

行程 Travel S	加工力 Working Force kN(tonf)		弹簧力 Spring Force N(kgf)		总重量 Total Weight kg	代号 Catalog No.	(W)	(θ)	销孔孔径选择 Selection of Dowel Pin Hole Diameter(H7)			SANKYO 代号对照 Catalog No.
	标准加工力 (100万回) Standard Working Force (one million strokes)	允许加工力 (30万回) Allowable Working Force (300,000 strokes)	初压 Initial Load	终压 Final Load					驱动块 Cam Driver	底座 Cam Holder	驱动块/底座 Cam Driver/ Cam Holder	
43.6	29.4 (3.0)	58.8 (6.0)	297.0 (30.3)	1039.5 (106.1)	17.8	KEAC	65	55	10-12-13			SOUK



Order

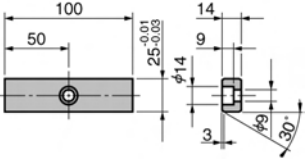
Catalog No. **KEAC** (W) **65** - (θ) **55** - 销孔直径  
Dowel Pin Hole Diameter

**KEAC 65 - 55 - HK13**

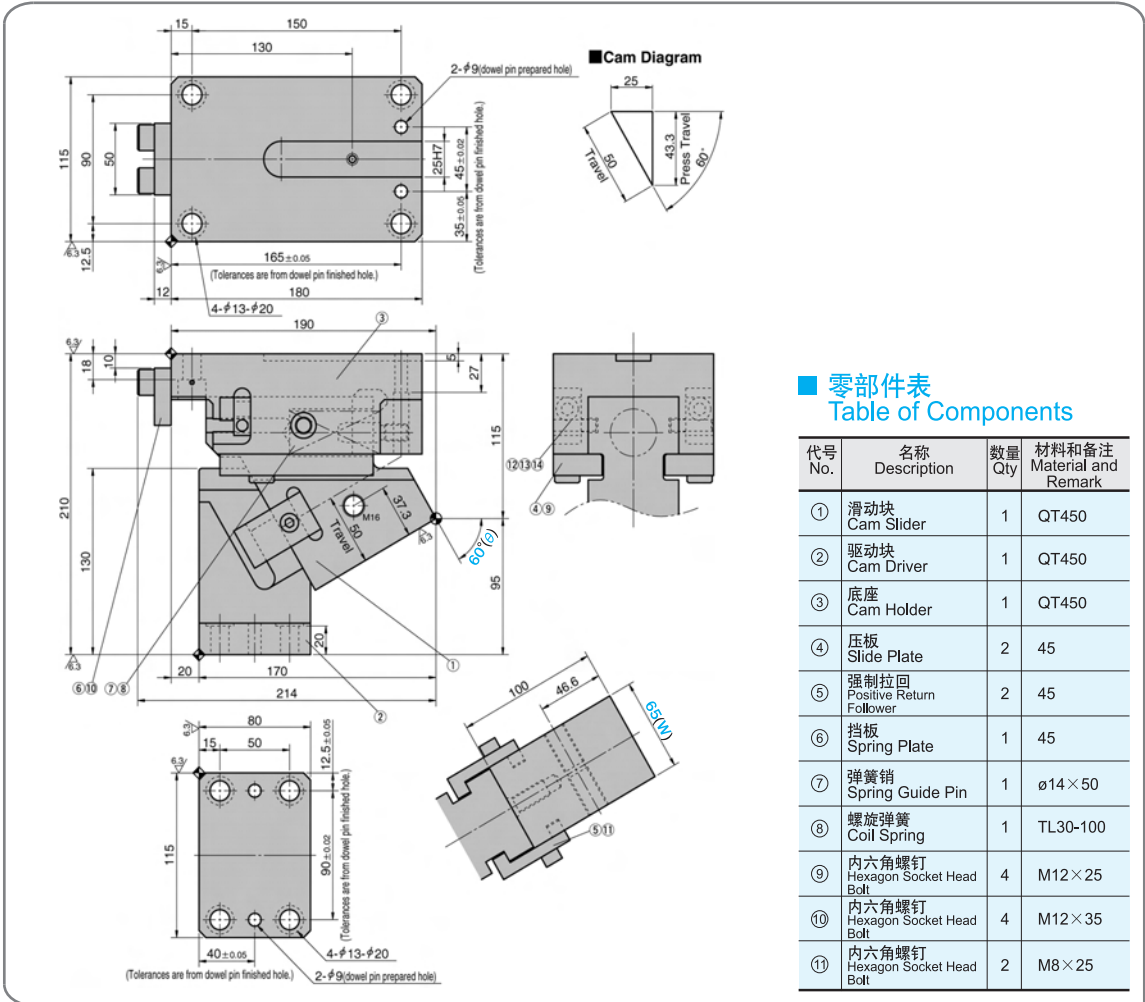
**KEAC 65 - 55 - HDK13**

- ...销孔预钻孔  
Dowel Pin Prepared hole
- ...销孔13 (H7) 仅驱动块  
Dowel Pin hole h13(H7) for cam driver only
- ...销孔13 (H7) 驱动块和底座  
Dowel Pin hole h13(H7) for both holder and driver

### 键详图 Key Specification



**KEAC65-60**



**零部件表**  
Table of Components

代号 No.	名称 Description	数量 Qty	材料和备注 Material and Remark
①	滑动块 Cam Slider	1	QT450
②	驱动块 Cam Driver	1	QT450
③	底座 Cam Holder	1	QT450
④	压板 Slide Plate	2	45
⑤	强制拉回 Positive Return Follower	2	45
⑥	挡板 Spring Plate	1	45
⑦	弹簧销 Spring Guide Pin	1	φ14×50
⑧	螺旋弹簧 Coil Spring	1	TL30-100
⑨	内六角螺钉 Hexagon Socket Head Bolt	4	M12×25
⑩	内六角螺钉 Hexagon Socket Head Bolt	4	M12×35
⑪	内六角螺钉 Hexagon Socket Head Bolt	2	M8×25

行程 Travel S	加工力 Working Force kN(tonf)		弹簧力 Spring Force N(kgf)		总重量 Total Weight kg	代号 Catalog No.	(W)	(θ)	销孔孔径选择 Selection of Dowel Pin Hole Diameter(H7)			SANKYO 代号对照 Catalog No.
	标准加工力 (100万回) Standard Working Force (one million strokes)	允许加工力 (30万回) Allowable Working Force (300,000 strokes)	初压 Initial Load	终压 Final Load					驱动块 Cam Driver	底座 Cam Holder	驱动块/底座 Cam Driver/ Cam Holder	
50.0	29.4 (3.0)	58.8 (6.0)	297.0 (30.3)	1039.5 (106.1)	17.3	KEAC	65	60	10-12-13			SOUK



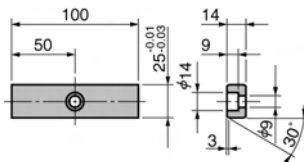
Order

Catalog No. (W) - (θ) - 销孔直径  
Dowel Pin Hole Diameter

KEAC 65 - 60  
KEAC 65 - 60 - HK13  
KEAC 65 - 60 - HDK13

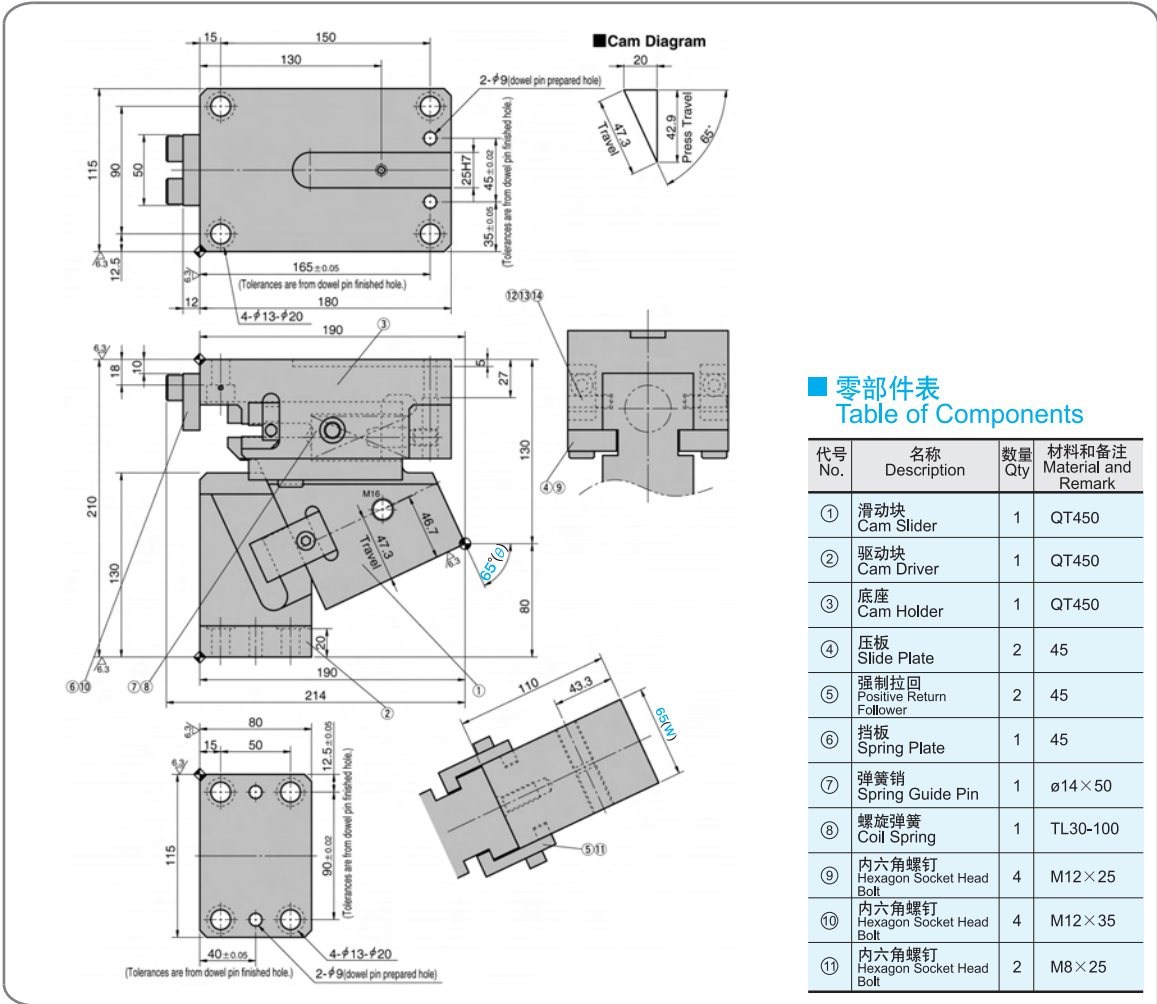
…销孔预钻孔  
Dowel Pin Prepad hole  
…销孔13(H7)仅驱动块  
Dowel Pin hole h13(H7)for cam driver only  
…销孔13(H7)驱动块和底座  
Dowel Pin hole h13(H7)for both holder and driver

**键详图 Key Specification**



KEAC  
65

# KEAC65-65



## 零部件表 Table of Components

代号 No.	名称 Description	数量 Qty	材料和备注 Material and Remark
①	滑块 Cam Slider	1	QT450
②	驱动块 Cam Driver	1	QT450
③	底座 Cam Holder	1	QT450
④	压板 Slide Plate	2	45
⑤	强制拉回 Positive Return Follower	2	45
⑥	挡板 Spring Plate	1	45
⑦	弹簧销 Spring Guide Pin	1	φ14×50
⑧	螺旋弹簧 Coil Spring	1	TL30-100
⑨	内六角螺钉 Hexagon Socket Head Bolt	4	M12×25
⑩	内六角螺钉 Hexagon Socket Head Bolt	4	M12×35
⑪	内六角螺钉 Hexagon Socket Head Bolt	2	M8×25

行程 Travel S	加工力 Working Force kN(tonf)		弹簧力 Spring Force N(kgf)		总重量 Total Weight kg	代号 Catalog No.	(W)	(θ)	销孔孔径选择 Selection of Dowel Pin Hole Diameter(H7)			SANKYO 代号对照 Catalog No.
	标准加工力 (100万回) Standard Working Force (one million strokes)	允许加工力 (30万回) Allowable Working Force (300,000 strokes)	初压 Initial Load	终压 Final Load					驱动块 Cam Driver	底座 Cam Holder	驱动块/底座 Cam Driver/ Cam Holder	
47.3	29.4 (3.0)	58.8 (6.0)	297.0 (30.3)	891.0 (90.9)	18.5	KEAC	65	65	10-12-13			SOUK

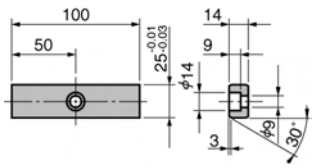


Order

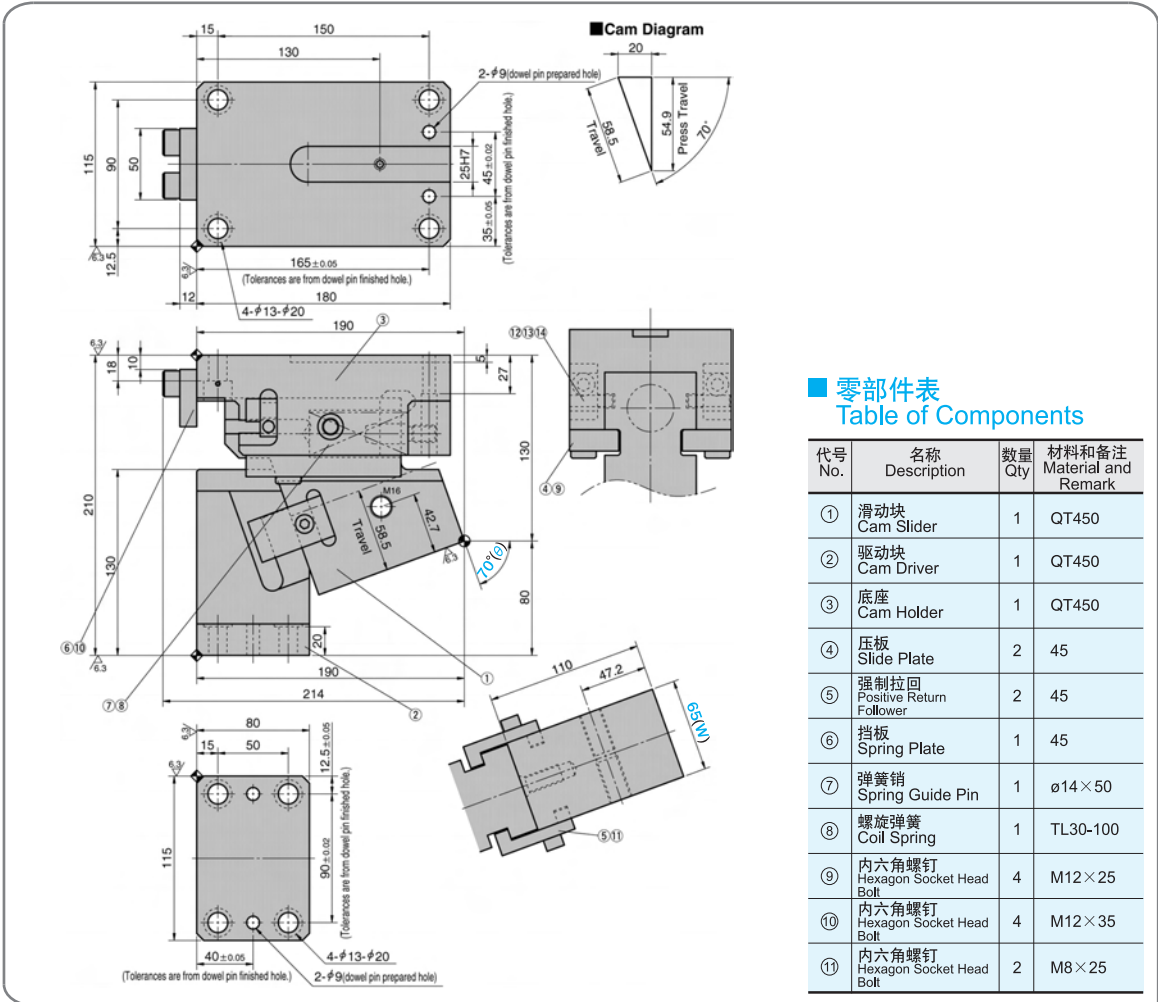
Catalog No. **KEAC** (W) **65** - (θ) **65** - **HK13**  
 Catalog No. **KEAC** (W) **65** - (θ) **65** - **HDK13**

- ...销孔预钻孔  
Dowel Pin Prepared hole
- ...销孔13 (H7) 仅驱动块  
Dowel Pin hole h13(H7) for cam driver only
- ...销孔13 (H7) 驱动块和底座  
Dowel Pin hole h13(H7) for both holder and driver

## 键详图 Key Specification



**KEAC65-70**



**零部件表**  
Table of Components

代号 No.	名称 Description	数量 Qty	材料和备注 Material and Remark
①	滑动块 Cam Slider	1	QT450
②	驱动块 Cam Driver	1	QT450
③	底座 Cam Holder	1	QT450
④	压板 Slide Plate	2	45
⑤	强制拉回 Positive Return Follower	2	45
⑥	挡板 Spring Plate	1	45
⑦	弹簧销 Spring Guide Pin	1	φ14×50
⑧	螺旋弹簧 Coil Spring	1	TL30-100
⑨	内六角螺钉 Hexagon Socket Head Bolt	4	M12×25
⑩	内六角螺钉 Hexagon Socket Head Bolt	4	M12×35
⑪	内六角螺钉 Hexagon Socket Head Bolt	2	M8×25

行程 Travel S	加工力 Working Force kN(tonf)		弹簧力 Spring Force N(kgf)		总重量 Total Weight kg	代号 Catalog No.	(W)	(θ)	销孔孔径选择 Selection of Dowel Pin Hole Diameter(H7)			SANKYO 代号对照 Catalog No.
	标准加工力 (100万回) Standard Working Force (one million strokes)	允许加工力 (30万回) Allowable Working Force (300,000 strokes)	初压 Initial Load	终压 Final Load					驱动块 Cam Driver	底座 Cam Holder	驱动块/底座 Cam Driver/ Cam Holder	
58.5	29.4 (3.0)	58.8 (6.0)	297.0 (30.3)	891.0 (90.9)	18.4	KEAC	65	70	10-12-13			SOUK



Order

Catalog No. (W) - (θ) - 销孔直径  
Dowel Pin Hole Diameter

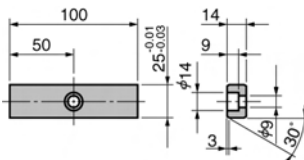
KEAC 65 - 70

KEAC 65 - 70 - HK13

KEAC 65 - 70 - HDK13

- ...销孔预钻孔  
Dowel Pin Prepared hole
- ...销孔13(H7)仅驱动块  
Dowel Pin hole h13(H7) for cam driver only
- ...销孔13(H7)驱动块和底座  
Dowel Pin hole h13(H7) for both holder and driver

**键详图 Key Specification**





# KEAC100-00

Technical drawings of the KEAC100-00 aerial cam unit. The drawings include a front view, a side view, and a detail view of the cam driver assembly. Dimensions are provided in millimeters. Callouts identify components 1 through 12. A cam diagram shows the cam profile with a 45-degree angle and a 28.3mm travel distance.

## 零部件表 Table of Components

代号 No.	名称 Description	数量 Qty	材料和备注 Material and Remark
①	滑动块 Cam Slider	1	QT450
②	驱动块 Cam Driver	1	QT450
③	底座 Cam Holder	1	QT450
④	压板 Slide Plate	2	45
⑤	强制拉回 Positive Return Follower	2	45
⑥	挡板 Spring Plate	1	45
⑦	弹簧销 Spring Guide Pin	2	φ14×50
⑧	螺旋弹簧 Coil Spring	2	TM30-175
⑨	缓冲块 Stopper	2	φ22×15
⑩	内六角螺钉 Hexagon Socket Head Bolt	6	M12×35
⑪	内六角螺钉 Hexagon Socket Head Bolt	2	M8×25
⑫	内六角螺钉 Hexagon Socket Head Bolt	4	M16×45

行程 Travel S	加工力 Working Force kN(tonf)		弹簧力 Spring Force N(kgf)		总重量 Total Weight kg	代号 Catalog No.	(W)	(θ)	销孔孔径选择 Selection of Dowel Pin Hole Diameter(H7)			SANKYO 代号对照 Catalog No.
	标准加工力 (100万回) Standard Working Force (one million strokes)	允许加工力 (30万回) Allowable Working Force (300,000 strokes)	初压 Initial Load	终压 Final Load					驱动块 Cam Driver	底座 Cam Holder	驱动块/底座 Cam Driver/ Cam Holder	
28.3	44.1 (4.5)	88.2 (9.0)	313.0 (31.9)	2817.0 (287.1)	47.0	KEAC	100	00	12-13			SOUK



Order

Catalog No. (W) - (θ) - 销孔直径  
Dowel Pin Hole Diameter

KEAC 100 - 00

KEAC 100 - 00 - HK13

KEAC 100 - 00 - HDK13

…销孔预钻孔

Dowel Pin Prepard hole

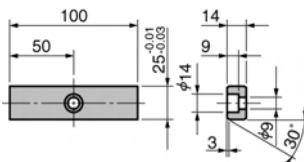
…销孔13 (H7) 仅驱动块

Dowel Pin hole h13(H7) for cam driver only

…销孔13 (H7) 驱动块和底座

Dowel Pin hole h13(H7) for both holder and driver

## ■ 键详图 Key Specification



# KEAC100-05

**■ 零部件表 Table of Components**

代号 No.	名称 Description	数量 Qty	材料和备注 Material and Remark
①	滑动块 Cam Slider	1	QT450
②	驱动块 Cam Driver	1	QT450
③	底座 Cam Holder	1	QT450
④	压板 Slide Plate	2	45
⑤	强制拉回 Positive Return Follower	2	45
⑥	挡板 Spring Plate	1	45
⑦	弹簧销 Spring Guide Pin	2	φ14×50
⑧	螺旋弹簧 Coil Spring	2	TM30-150
⑨	缓冲块 Stopper	2	φ22×15
⑩	内六角螺钉 Hexagon Socket Head Bolt	6	M12×35
⑪	内六角螺钉 Hexagon Socket Head Bolt	2	M8×25
⑫	内六角螺钉 Hexagon Socket Head Bolt	4	M16×45

**■ Cam Diagram**

行程 Travel S	加工力 Working Force kN(tonf)		弹簧力 Spring Force N(kgf)		总重量 Total Weight kg	代号 Catalog No.	(W)	(θ)	销孔孔径选择 Selection of Dowel Pin Hole Diameter(H7)			SANKYO 代号对照 Catalog No.
	标准加工力 (100万回) Standard Working Force (one million strokes)	允许加工力 (30万回) Allowable Working Force (300,000 strokes)	初压 Initial Load	终压 Final Load					驱动块 Cam Driver	底座 Cam Holder	驱动块/底座 Cam Driver/ Cam Holder	
28.4	44.1 (4.5)	88.2 (9.0)	146.4 (14.9)	3074.4 (313.3)	47.8	KEAC	100	05	12-13			SOUK



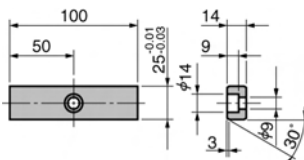
Order

Catalog No. (W) - (θ) - 销孔直径 Dowel Pin Hole Diameter

- KEAC 100 - 05
- KEAC 100 - 05 - HK13
- KEAC 100 - 05 - HDK13

- ...销孔预钻孔 Dowel Pin Prepared hole
- ...销孔13 (H7) 仅驱动块 Dowel Pin hole h13(H7) for cam driver only
- ...销孔13 (H7) 驱动块和底座 Dowel Pin hole h13(H7) for both holder and driver

■ 键详图 Key Specification



# KEAC100-10

**■ 零部件表 Table of Components**

代号 No.	名称 Description	数量 Qty	材料和备注 Material and Remark
①	滑动块 Cam Slider	1	QT450
②	驱动块 Cam Driver	1	QT450
③	底座 Cam Holder	1	QT450
④	压板 Slide Plate	2	45
⑤	强制拉回 Positive Return Follower	2	45
⑥	挡板 Spring Plate	1	45
⑦	弹簧销 Spring Guide Pin	2	φ14 × 50
⑧	螺旋弹簧 Coil Spring	2	TM30-150
⑨	缓冲块 Stopper	2	φ22 × 15
⑩	内六角螺钉 Hexagon Socket Head Bolt	6	M12 × 35
⑪	内六角螺钉 Hexagon Socket Head Bolt	2	M8 × 25
⑫	内六角螺钉 Hexagon Socket Head Bolt	4	M16 × 45

**■ Cam Diagram**

行程 Travel S	加工力 Working Force kN(tonf)		弹簧力 Spring Force N(kgf)		总重量 Total Weight kg	代号 Catalog No.	(W)	(θ)	销孔孔径选择 Selection of Dowel Pin Hole Diameter(H7)			SANKYO 代号对照 Catalog No.
	标准加工力 (100万回) Standard Working Force (one million strokes)	允许加工力 (30万回) Allowable Working Force (300,000 strokes)	初压 Initial Load	终压 Final Load					驱动块 Cam Driver	底座 Cam Holder	驱动块/底座 Cam Driver/Cam Holder	
33.3	44.1 (4.5)	88.2 (9.0)	146.4 (14.9)	3074.4 (313.3)	44.9	KEAC	100	10	12-13			SOUK



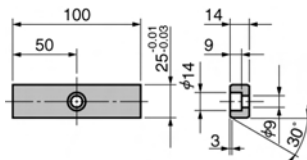
Order

Catalog No. (W) - (θ) - 销孔直径 Dowel Pin Hole Diameter

- KEAC 100 - 10
- KEAC 100 - 10 - HK13
- KEAC 100 - 10 - HDK13

- …销孔预钻孔 Dowel Pin Prepared hole
- …销孔13(H7)仅驱动块 Dowel Pin hole h13(H7) for cam driver only
- …销孔13(H7)驱动块和底座 Dowel Pin hole h13(H7) for both holder and driver

■ 键详图 Key Specification



# KEAC100-15

**■ 零部件表 Table of Components**

代号 No.	名称 Description	数量 Qty	材料和备注 Material and Remark
①	滑块 Cam Slider	1	QT450
②	驱动块 Cam Driver	1	QT450
③	底座 Cam Holder	1	QT450
④	压板 Slide Plate	2	45
⑤	强制拉回 Positive Return Follower	2	45
⑥	挡板 Spring Plate	1	45
⑦	弹簧销 Spring Guide Pin	2	φ14×50
⑧	螺旋弹簧 Coil Spring	2	TM30-150
⑨	缓冲块 Stopper	2	φ22×15
⑩	内六角螺钉 Hexagon Socket Head Bolt	6	M12×35
⑪	内六角螺钉 Hexagon Socket Head Bolt	2	M8×25
⑫	内六角螺钉 Hexagon Socket Head Bolt	4	M16×45

**■ Cam Diagram**

行程 Travel S	加工力 Working Force kN(tonf)		弹簧力 Spring Force N(kgf)		总重量 Total Weight kg	代号 Catalog No.	(W)	(θ)	销孔孔径选择 Selection of Dowel Pin Hole Diameter(H7)			SANKYO 代号对照 Catalog No.
	标准加工力 (100万回) Standard Working Force (one million strokes)	允许加工力 (30万回) Allowable Working Force (300,000 strokes)	初压 Initial Load	终压 Final Load					驱动块 Cam Driver	底座 Cam Holder	驱动块/底座 Cam Driver/ Cam Holder	
33.9	44.1 (4.5)	88.2 (9.0)	146.4 (14.9)	3074.4 (313.3)	47.1	KEAC	100	15	12-13			SOUK



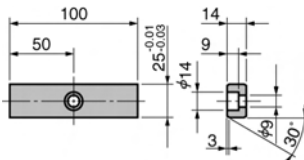
Order

Catalog No. (W) - (θ) - 销孔直径 Dowel Pin Hole Diameter

- KEAC 100 - 15
- KEAC 100 - 15 - HK13
- KEAC 100 - 15 - HDK13

- ...销孔预钻孔 Dowel Pin Prepard hole
- ...销孔13 (H7) 仅驱动块 Dowel Pin hole h13(H7) for cam driver only
- ...销孔13 (H7) 驱动块和底座 Dowel Pin hole h13(H7) for both holder and driver

■ 键详图 Key Specification



KEAC 100

# KEAC100-20

**Cam Diagram**

32  
24.1  
25  
20  
30.9  
Travel  
Press Travel

### 零部件表 Table of Components

代号 No.	名称 Description	数量 Qty	材料和备注 Material and Remark
①	滑块 Cam Slider	1	QT450
②	驱动块 Cam Driver	1	QT450
③	底座 Cam Holder	1	QT450
④	压板 Slide Plate	2	45
⑤	强制拉回 Positive Return Follower	2	45
⑥	挡板 Spring Plate	1	45
⑦	弹簧销 Spring Guide Pin	2	φ14 × 50
⑧	螺旋弹簧 Coil Spring	2	TM30-125
⑨	缓冲块 Stopper	2	φ22 × 15
⑩	内六角螺钉 Hexagon Socket Head Bolt	6	M12 × 35
⑪	内六角螺钉 Hexagon Socket Head Bolt	2	M8 × 25
⑫	内六角螺钉 Hexagon Socket Head Bolt	4	M16 × 45

行程 Travel S	加工力 Working Force kN(tonf)		弹簧力 Spring Force N(kgf)		总重量 Total Weight kg	代号 Catalog No.	(W)	(θ)	销孔孔径选择 Selection of Dowel Pin Hole Diameter(H7)			SANKYO 代号对照 Catalog No.
	标准加工力 (100万回) Standard Working Force (one million strokes)	允许加工力 (30万回) Allowable Working Force (300,000 strokes)	初压 Initial Load	终压 Final Load					驱动块 Cam Driver	底座 Cam Holder	驱动块/底座 Cam Driver/ Cam Holder	
30.9	44.1 (4.5)	88.2 (9.0)	175.2 (17.9)	2978.4 (304.0)	44.8	KEAC	100	20	12-13			SOUK



Order

Catalog No. (W) - (θ) - 销孔直径  
Dowel Pin Hole Diameter

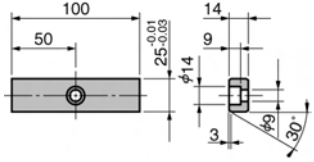
KEAC 100 - 20

KEAC 100 - 20 - HK13

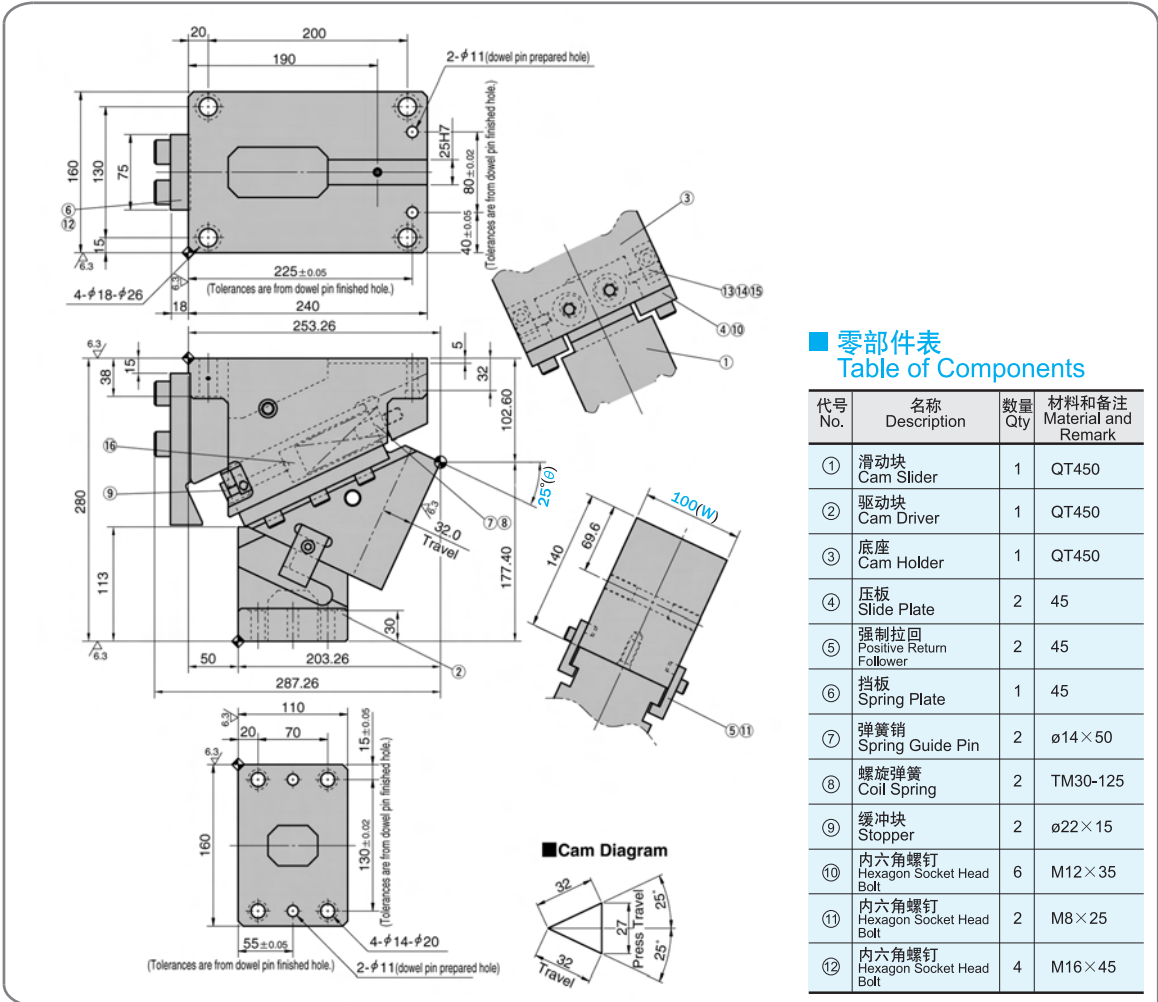
KEAC 100 - 20 - HDK13

- ...销孔预钻孔  
Dowel Pin Prepared hole
- ...销孔13 (H7) 仅驱动块  
Dowel Pin hole h13(H7) for cam driver only
- ...销孔13 (H7) 驱动块和底座  
Dowel Pin hole h13(H7) for both holder and driver

### ■ 键详图 Key Specification



# KEAC100-25



■ 零部件表  
Table of Components

代号 No.	名称 Description	数量 Qty	材料和备注 Material and Remark
①	滑动块 Cam Slider	1	QT450
②	驱动块 Cam Driver	1	QT450
③	底座 Cam Holder	1	QT450
④	压板 Slide Plate	2	45
⑤	强制拉回 Positive Return Follower	2	45
⑥	挡板 Spring Plate	1	45
⑦	弹簧销 Spring Guide Pin	2	φ14×50
⑧	螺旋弹簧 Coil Spring	2	TM30-125
⑨	缓冲块 Stopper	2	φ22×15
⑩	内六角螺钉 Hexagon Socket Head Bolt	6	M12×35
⑪	内六角螺钉 Hexagon Socket Head Bolt	2	M8×25
⑫	内六角螺钉 Hexagon Socket Head Bolt	4	M16×45

行程 Travel S	加工力 Working Force kN(tonf)		弹簧力 Spring Force N(kgf)		总重量 Total Weight kg	代号 Catalog No.	(W)	(θ)	销孔孔径选择 Selection of Dowel Pin Hole Diameter(H7)			SANKYO 代号对照 Catalog No.
	标准加工力 (100万回) Standard Working Force (one million strokes)	允许加工力 (30万回) Allowable Working Force (300,000 strokes)	初压 Initial Load	终压 Final Load					驱动块 Cam Driver	底座 Cam Holder	驱动块/底座 Cam Driver/ Cam Holder	
32.0	44.1 (4.5)	88.2 (9.0)	175.2 (17.9)	2978.4 (304.0)	46.5	KEAC	100	25	12-13			SOUK



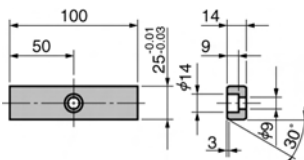
Order

Catalog No. (W) - (θ) - 销孔直径  
Dowel Pin Hole Diameter

KEAC 100 - 25  
KEAC 100 - 25 - HK13  
KEAC 100 - 25 - HDK13

- ...销孔预钻孔  
Dowel Pin Prepared hole
- ...销孔13(H7)仅驱动块  
Dowel Pin hole h13(H7) for cam driver only
- ...销孔13(H7)驱动块和底座  
Dowel Pin hole h13(H7) for both holder and driver

■ 键详图 Key Specification



KEAC  
100



# KEAC100-30

**■ 零部件表 Table of Components**

代号 No.	名称 Description	数量 Qty	材料和备注 Material and Remark
①	滑动块 Cam Slider	1	QT450
②	驱动块 Cam Driver	1	QT450
③	底座 Cam Holder	1	QT450
④	压板 Slide Plate	2	45
⑤	强制拉回 Positive Return Follower	2	45
⑥	挡板 Spring Plate	1	45
⑦	弹簧销 Spring Guide Pin	2	φ14×50
⑧	螺旋弹簧 Coil Spring	2	TM30-125
⑨	缓冲块 Stopper	2	φ22×15
⑩	内六角螺钉 Hexagon Socket Head Bolt	6	M12×35
⑪	内六角螺钉 Hexagon Socket Head Bolt	2	M8×25
⑫	内六角螺钉 Hexagon Socket Head Bolt	4	M16×45

**■ Cam Diagram**

行程 Travel S	加工力 Working Force kN(tonf)		弹簧力 Spring Force N(kgf)		总重量 Total Weight kg	代号 Catalog No.	(W)	(θ)	销孔孔径选择 Selection of Dowel Pin Hole Diameter(H7)			SANKYO 代号对照 Catalog No.
	标准加工力 (100万回) Standard Working Force (one million strokes)	允许加工力 (30万回) Allowable Working Force (300,000 strokes)	初压 Initial Load	终压 Final Load					驱动块 Cam Driver	底座 Cam Holder	驱动块/底座 Cam Driver/ Cam Holder	
33.5	44.1 (4.5)	88.2 (9.0)	175.2 (17.9)	2978.4 (304.0)	44.1	KEAC	100	30	12-13			SOUK



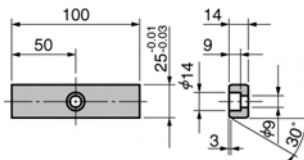
Order

Catalog No. (W) - (θ) - 销孔直径 Dowel Pin Hole Diameter

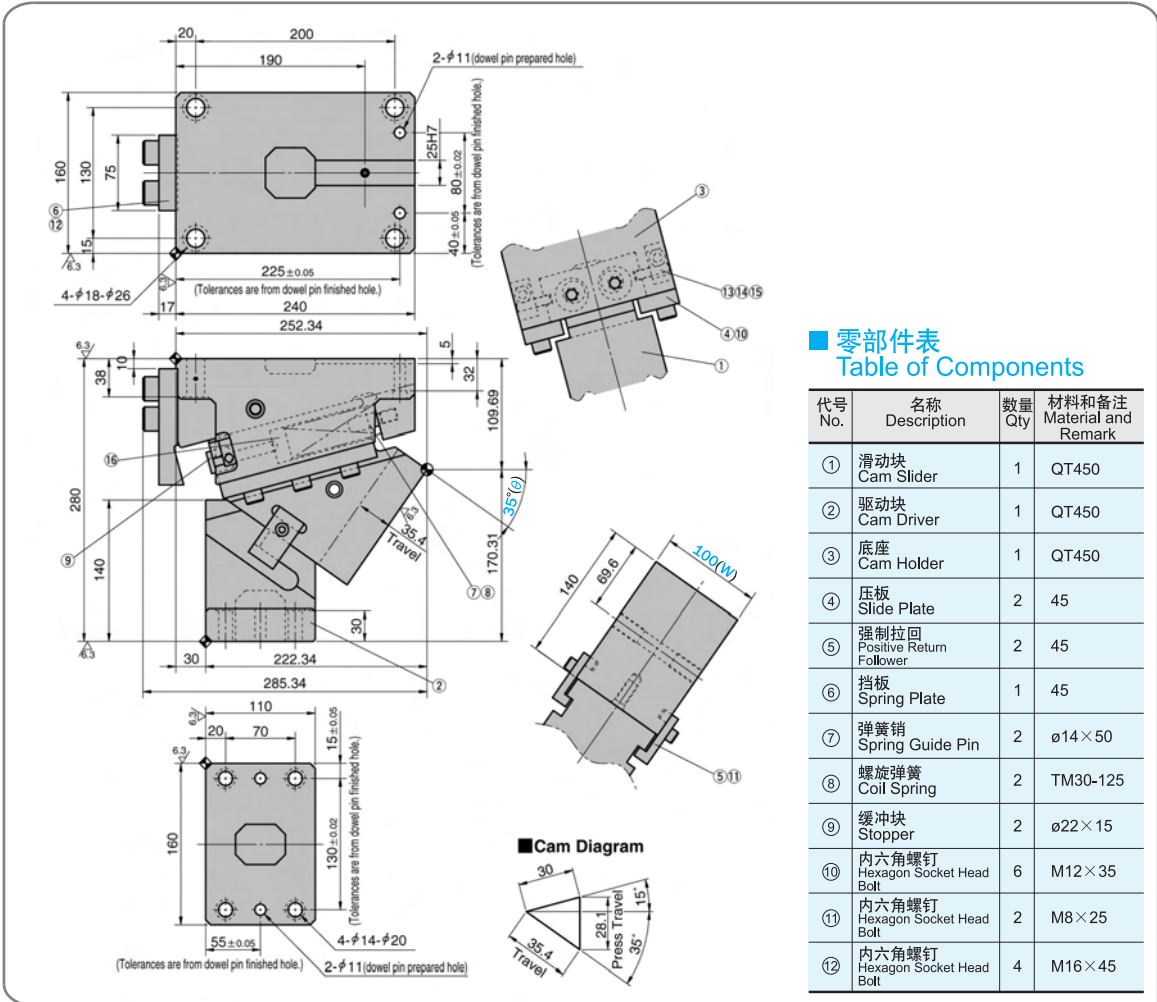
- KEAC 100 - 30
- KEAC 100 - 30 - HK13
- KEAC 100 - 30 - HDK13

- …销孔预钻孔 Dowel Pin Prepared hole
- …销孔13 (H7) 仅驱动块 Dowel Pin hole h13(H7) for cam driver only
- …销孔13 (H7) 驱动块和底座 Dowel Pin hole h13(H7) for both holder and driver

■ 键详图 Key Specification



# KEAC100-35



■ 零部件表  
Table of Components

代号 No.	名称 Description	数量 Qty	材料和备注 Material and Remark
①	滑动块 Cam Slider	1	QT450
②	驱动块 Cam Driver	1	QT450
③	底座 Cam Holder	1	QT450
④	压板 Slide Plate	2	45
⑤	强制拉回 Positive Return Follower	2	45
⑥	挡板 Spring Plate	1	45
⑦	弹簧销 Spring Guide Pin	2	φ14×50
⑧	螺旋弹簧 Coil Spring	2	TM30-125
⑨	缓冲块 Stopper	2	φ22×15
⑩	内六角螺钉 Hexagon Socket Head Bolt	6	M12×35
⑪	内六角螺钉 Hexagon Socket Head Bolt	2	M8×25
⑫	内六角螺钉 Hexagon Socket Head Bolt	4	M16×45

行程 Travel S	加工力 Working Force kN(tonf)		弹簧力 Spring Force N(kgf)		总重量 Total Weight kg	代号 Catalog No.	(W)	(θ)	销孔孔径选择 Selection of Dowel Pin Hole Diameter(H7)			SANKYO 代号对照 Catalog No.
	标准加工力 (100万回) Standard Working Force (one million strokes)	允许加工力 (30万回) Allowable Working Force (300,000 strokes)	初压 Initial Load	终压 Final Load					驱动块 Cam Driver	底座 Cam Holder	驱动块/底座 Cam Driver/ Cam Holder	
35.4	44.1 (4.5)	88.2 (9.0)	175.2 (17.9)	2803.2 (286.1)	45.4	KEAC	100	35	12-13			SOUK



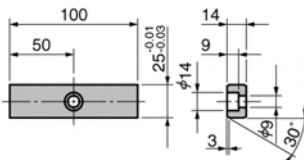
Order

Catalog No. (W) - (θ) - 销孔直径 Dowel Pin Hole Diameter

- KEAC 100 - 35
- KEAC 100 - 35 - HK13
- KEAC 100 - 35 - HDK13

- …销孔预钻孔 Dowel Pin Prepard hole
- …销孔13 (H7) 仅驱动块 Dowel Pin hole h13(H7) for cam driver only
- …销孔13 (H7) 驱动块和底座 Dowel Pin hole h13(H7) for both holder and driver

■ 键详图 Key Specification



KEAC 100

# KEAC100-40

**Cam Diagram**

30  
5  
27.7  
39  
40°  
Press Travel  
Travel

2-φ11 (dowel pin prepared hole)  
φ25H7  
40±0.05, 80±0.02  
(Tolerances are from dowel pin finished hole.)

225±0.05  
(Tolerances are from dowel pin finished hole.)  
240

4-φ18-φ26  
17  
160  
130  
75  
15  
6.3

115  
5  
32  
165  
40°(e)  
39.0  
Travel

120  
58.6  
100(W)

110  
20  
70  
15±0.05  
130±0.02  
(Tolerances are from dowel pin finished hole.)  
160  
55±0.05  
4-φ14-φ20  
2-φ11 (dowel pin prepared hole)  
(Tolerances are from dowel pin finished hole.)

273  
210  
30  
6.3

9  
13/14/15  
4/10  
1  
3

**零部件表  
Table of Components**

代号 No.	名称 Description	数量 Qty	材料和备注 Material and Remark
①	滑块 Cam Slider	1	QT450
②	驱动块 Cam Driver	1	QT450
③	底座 Cam Holder	1	QT450
④	压板 Slide Plate	2	45
⑤	强制拉回 Positive Return Follower	2	45
⑥	挡板 Spring Plate	1	45
⑦	弹簧销 Spring Guide Pin	2	φ14×50
⑧	螺旋弹簧 Coil Spring	2	TM30-125
⑨	缓冲块 Stopper	2	φ22×15
⑩	内六角螺钉 Hexagon Socket Head Bolt	6	M12×35
⑪	内六角螺钉 Hexagon Socket Head Bolt	2	M8×25
⑫	内六角螺钉 Hexagon Socket Head Bolt	4	M16×45

行程 Travel S	加工力 Working Force kN(tonf)		弹簧力 Spring Force N(kgf)		总重量 Total Weight kg	代号 Catalog No.	(W)	(θ)	销孔孔径选择 Selection of Dowel Pin Hole Diameter(H7)			SANKYO 代号对照 Catalog No.
	标准加工力 (100万回) Standard Working Force (one million strokes)	允许加工力 (30万回) Allowable Working Force (300,000 strokes)	初压 Initial Load	终压 Final Load					驱动块 Cam Driver	底座 Cam Holder	驱动块/底座 Cam Driver/ Cam Holder	
39.0	44.1 (4.5)	88.2 (9.0)	175.2 (17.9)	2803.2 (286.1)	40.8	KEAC	100	40	12-13			SOUK



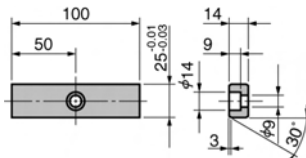
Order

Catalog No. (W) - (θ) - 销孔直径  
Dowel Pin Hole Diameter

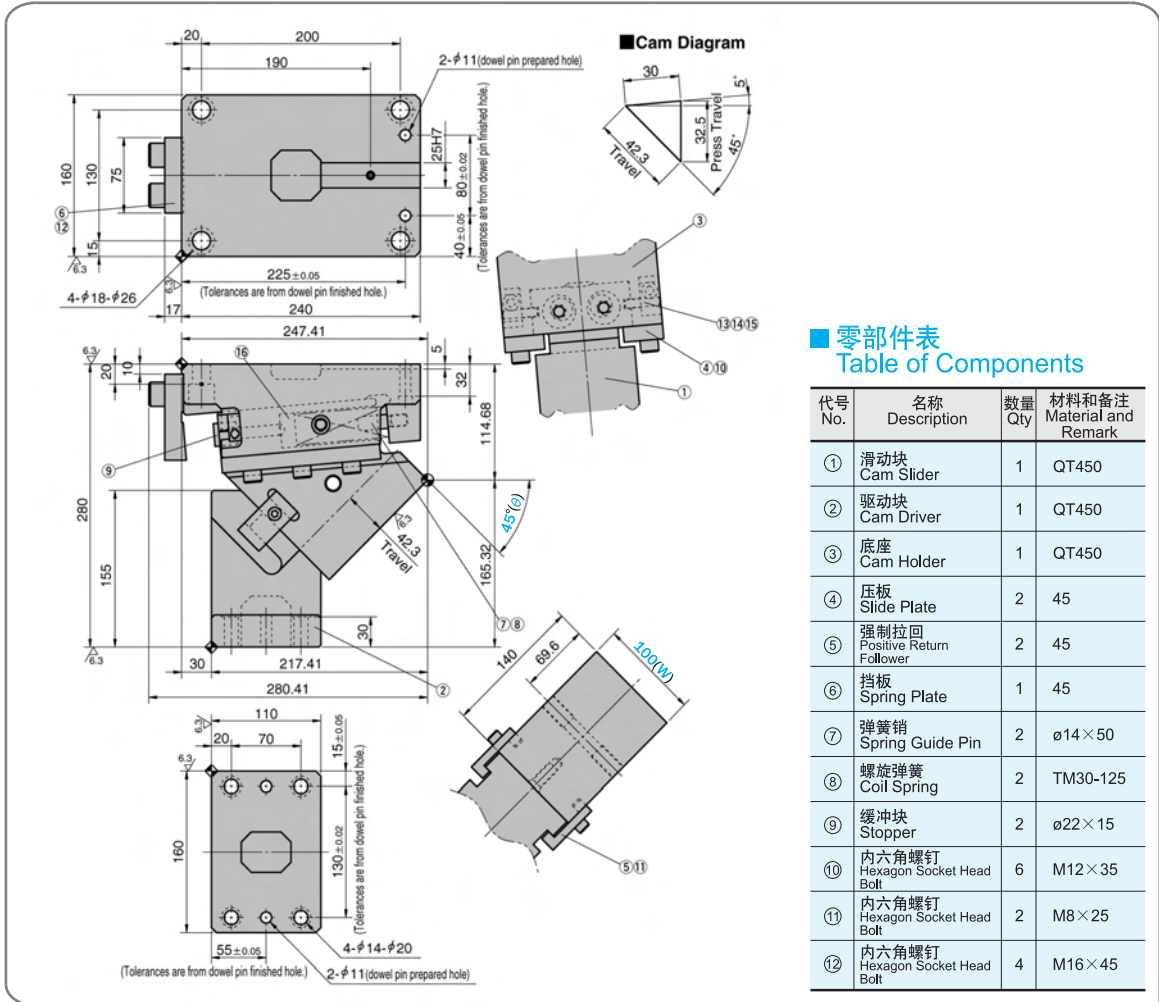
- KEAC 100 - 40
- KEAC 100 - 40 - HK13
- KEAC 100 - 40 - HDK13

- …销孔预钻孔  
Dowel Pin Prepared hole
- …销孔13 (H7) 仅驱动块  
Dowel Pin hole h13(H7) for cam driver only
- …销孔13 (H7) 驱动块和底座  
Dowel Pin hole h13(H7) for both holder and driver

■ 键详图 Key Specification



# KEAC100-45



## 零部件表 Table of Components

代号 No.	名称 Description	数量 Qty	材料和备注 Material and Remark
①	滑动块 Cam Slider	1	QT450
②	驱动块 Cam Driver	1	QT450
③	底座 Cam Holder	1	QT450
④	压板 Slide Plate	2	45
⑤	强制拉回 Positive Return Follower	2	45
⑥	挡板 Spring Plate	1	45
⑦	弹簧销 Spring Guide Pin	2	φ14×50
⑧	螺旋弹簧 Coil Spring	2	TM30-125
⑨	缓冲块 Stopper	2	φ22×15
⑩	内六角螺钉 Hexagon Socket Head Bolt	6	M12×35
⑪	内六角螺钉 Hexagon Socket Head Bolt	2	M8×25
⑫	内六角螺钉 Hexagon Socket Head Bolt	4	M16×45

行程 Travel S	加工力 Working Force kN(tonf)		弹簧力 Spring Force N(kgf)		总重量 Total Weight kg	代号 Catalog No.	(W)	(θ)	销孔孔径选择 Selection of Dowel Pin Hole Diameter(H7)			SANKYO 代号对照 Catalog No.
	标准加工力 (100万回) Standard Working Force (one million strokes)	允许加工力 (30万回) Allowable Working Force (300,000 strokes)	初压 Initial Load	终压 Final Load					驱动块 Cam Driver	底座 Cam Holder	驱动块/底座 Cam Driver/ Cam Holder	
42.3	44.1 (4.5)	88.2 (9.0)	175.2 (17.9)	2803.2 (286.1)	41.7	KEAC	100	45	12-13			SOUK



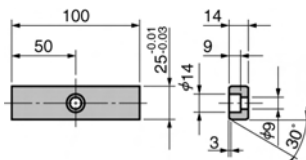
Order

Catalog No. (W) - (θ) - 销孔直径  
Dowel Pin Hole Diameter

KEAC 100 - 45  
KEAC 100 - 45 - HK13  
KEAC 100 - 45 - HDK13

...销孔预钻孔  
Dowel Pin Prepared hole  
...销孔13 (H7) 仅驱动块  
Dowel Pin hole h13(H7) for cam driver only  
...销孔13 (H7) 驱动块和底座  
Dowel Pin hole h13(H7) for both holder and driver

## 键详图 Key Specification



KEAC  
100

# KEAC100-50

**Cam Diagram**

30  
46.7 Travel  
35.8 Press Travel  
50°

**零部件表 Table of Components**

代号 No.	名称 Description	数量 Qty	材料和备注 Material and Remark
①	滑动块 Cam Slider	1	QT450
②	驱动块 Cam Driver	1	QT450
③	底座 Cam Holder	1	QT450
④	压板 Slide Plate	2	45
⑤	强制拉回 Positive Return Follower	2	45
⑥	挡板 Spring Plate	1	45
⑦	弹簧销 Spring Guide Pin	2	φ14×50
⑧	螺旋弹簧 Coil Spring	2	TM30-125
⑨	缓冲块 Stopper	2	φ22×15
⑩	内六角螺钉 Hexagon Socket Head Bolt	6	M12×35
⑪	内六角螺钉 Hexagon Socket Head Bolt	2	M8×25
⑫	内六角螺钉 Hexagon Socket Head Bolt	4	M16×45

行程 Travel S	加工力 Working Force kN(tonf)		弹簧力 Spring Force N(kgf)		总重量 Total Weight kg	代号 Catalog No.	(W)	(θ)	销孔孔径选择 Selection of Dowel Pin Hole Diameter(H7)			SANKYO 代号对照 Catalog No.
	标准加工力 (100万回) Standard Working Force (one million strokes)	允许加工力 (30万回) Allowable Working Force (300,000 strokes)	初压 Initial Load	终压 Final Load					驱动块 Cam Driver	底座 Cam Holder	驱动块/底座 Cam Driver/Cam Holder	
46.7	49.0 (5.0)	98.0 (10.0)	175.2 (17.9)	2803.2 (286.1)	41.2	KEAC	100	50	12-13			SOUK



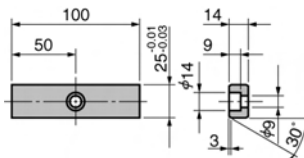
Order

Catalog No. (W) - (θ) - 销孔直径 Dowel Pin Hole Diameter

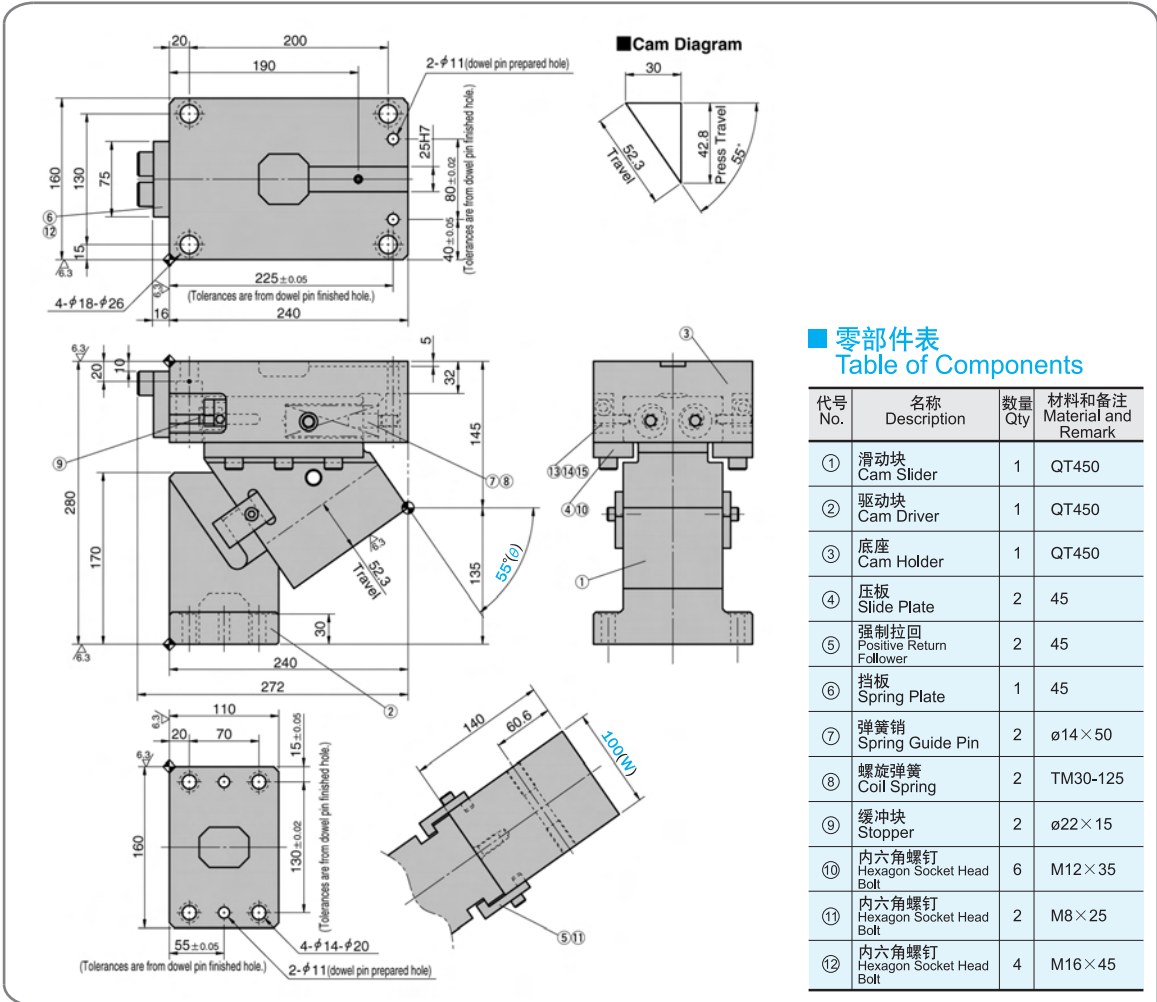
- KEAC 100 - 50
- KEAC 100 - 50 - HK13
- KEAC 100 - 50 - HDK13

- ...销孔预钻孔 Dowel Pin Prepard hole
- ...销孔13 (H7) 仅驱动块 Dowel Pin hole h13(H7) for cam driver only
- ...销孔13 (H7) 驱动块和底座 Dowel Pin hole h13(H7) for both holder and driver

■ 键详图 Key Specification



# KEAC100-55



### 零部件表 Table of Components

代号 No.	名称 Description	数量 Qty	材料和备注 Material and Remark
①	滑动块 Cam Slider	1	QT450
②	驱动块 Cam Driver	1	QT450
③	底座 Cam Holder	1	QT450
④	压板 Slide Plate	2	45
⑤	强制拉回 Positive Return Follower	2	45
⑥	挡板 Spring Plate	1	45
⑦	弹簧销 Spring Guide Pin	2	φ14×50
⑧	螺旋弹簧 Coil Spring	2	TM30-125
⑨	缓冲块 Stopper	2	φ22×15
⑩	内六角螺钉 Hexagon Socket Head Bolt	6	M12×35
⑪	内六角螺钉 Hexagon Socket Head Bolt	2	M8×25
⑫	内六角螺钉 Hexagon Socket Head Bolt	4	M16×45

行程 Travel S	加工力 Working Force kN(tonf)		弹簧力 Spring Force N(kgf)		总重量 Total Weight kg	代号 Catalog No.	(W)	(θ)	销孔孔径选择 Selection of Dowel Pin Hole Diameter(H7)			SANKYO 代号对照 Catalog No.
	标准加工力 (100万回) Standard Working Force (one million strokes)	允许加工力 (30万回) Allowable Working Force (300,000 strokes)	初压 Initial Load	终压 Final Load					驱动块 Cam Driver	底座 Cam Holder	驱动块/底座 Cam Driver/ Cam Holder	
52.3	49.0 (5.0)	98.0 (10.0)	175.2 (17.9)	2803.2 (286.1)	44.0	KEAC	100	55	12-13			SOUK



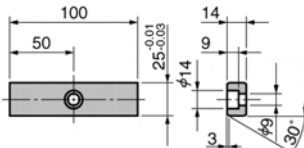
Order

Catalog No. (W) - (θ) - 销孔直径  
Dowel Pin Hole Diameter

KEAC 100 - 55  
KEAC 100 - 55 - HK13  
KEAC 100 - 55 - HDK13

- ...销孔预钻孔  
Dowel Pin Prepared hole
- ...销孔13 (H7) 仅驱动块  
Dowel Pin hole h13(H7) for cam driver only
- ...销孔13 (H7) 驱动块和底座  
Dowel Pin hole h13(H7) for both holder and driver

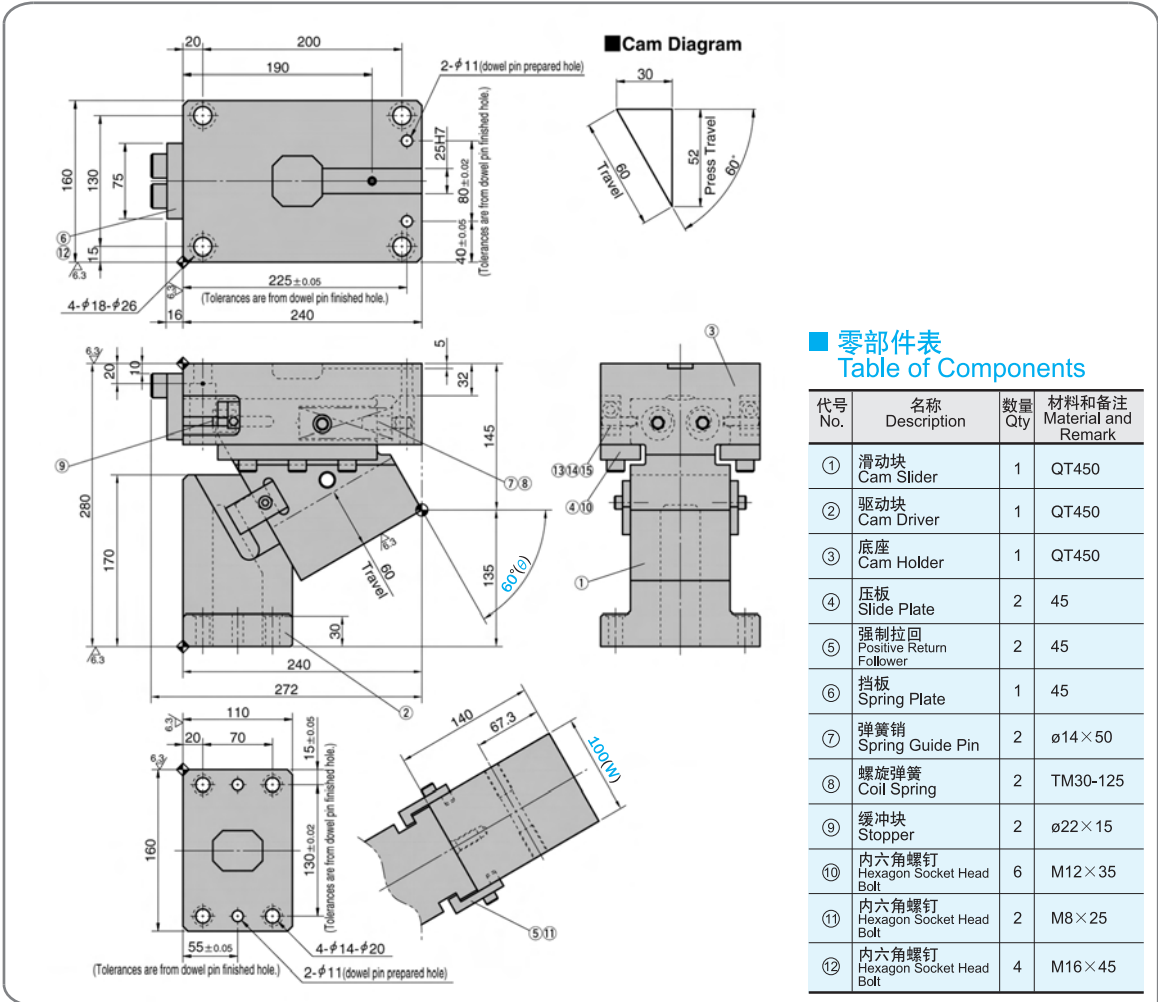
### ■ 键详图 Key Specification



KEAC  
100



# KEAC100-60



## 零部件表 Table of Components

代号 No.	名称 Description	数量 Qty	材料和备注 Material and Remark
①	滑块 Cam Slider	1	QT450
②	驱动块 Cam Driver	1	QT450
③	底座 Cam Holder	1	QT450
④	压板 Slide Plate	2	45
⑤	强制拉回 Positive Return Follower	2	45
⑥	挡板 Spring Plate	1	45
⑦	弹簧销 Spring Guide Pin	2	φ14×50
⑧	螺旋弹簧 Coil Spring	2	TM30-125
⑨	缓冲块 Stopper	2	φ22×15
⑩	内六角螺钉 Hexagon Socket Head Bolt	6	M12×35
⑪	内六角螺钉 Hexagon Socket Head Bolt	2	M8×25
⑫	内六角螺钉 Hexagon Socket Head Bolt	4	M16×45

行程 Travel S	加工力 Working Force kN(tonf)		弹簧力 Spring Force N(kgf)		总重量 Total Weight kg	代号 Catalog No.	(W)	(θ)	销孔孔径选择 Selection of Dowel Pin Hole Diameter(H7)			SANKYO 代号对照 Catalog No.
	标准加工力 (100万回) Standard Working Force (one million strokes)	允许加工力 (30万回) Allowable Working Force (300,000 strokes)	初压 Initial Load	终压 Final Load					驱动块 Cam Driver	底座 Cam Holder	驱动块/底座 Cam Driver/ Cam Holder	
60.0	49.0 (5.0)	98.0 (10.0)	175.2 (17.9)	2803.2 (286.1)	42.5	KEAC	100	60	12-13			SOUK



Order

Catalog No. (W) - (θ) - 销孔直径  
Dowel Pin Hole Diameter

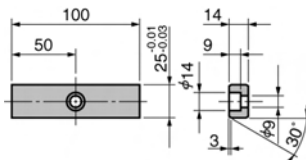
KEAC 100 - 60

KEAC 100 - 60 - HK13

KEAC 100 - 60 - HDK13

- ...销孔预钻孔  
Dowel Pin Prepared hole
- ...销孔13 (H7) 仅驱动块  
Dowel Pin hole h13(H7) for cam driver only
- ...销孔13 (H7) 驱动块和底座  
Dowel Pin hole h13(H7) for both holder and driver

## 键详图 Key Specification



# KEAC100-65

**Cam Diagram**

Travel: 47.3  
Press Travel: 42.9  
65°

**零部件表 Table of Components**

代号 No.	名称 Description	数量 Qty	材料和备注 Material and Remark
①	滑动块 Cam Slider	1	QT450
②	驱动块 Cam Driver	1	QT450
③	底座 Cam Holder	1	QT450
④	压板 Slide Plate	2	45
⑤	强制拉回 Positive Return Follower	2	45
⑥	挡板 Spring Plate	1	45
⑦	弹簧销 Spring Guide Pin	2	φ14 × 50
⑧	螺旋弹簧 Coil Spring	2	TM30-100
⑨	缓冲块 Stopper	2	φ22 × 15
⑩	内六角螺钉 Hexagon Socket Head Bolt	6	M12 × 35
⑪	内六角螺钉 Hexagon Socket Head Bolt	2	M8 × 25
⑫	内六角螺钉 Hexagon Socket Head Bolt	4	M16 × 45

行程 Travel S	加工力 Working Force kN(tonf)		弹簧力 Spring Force N(kgf)		总重量 Total Weight kg	代号 Catalog No.	(W)	(θ)	销孔孔径选择 Selection of Dowel Pin Hole Diameter(H7)			SANKYO 代号对照 Catalog No.
	标准加工力 (100万回) Standard Working Force (one million strokes)	允许加工力 (30万回) Allowable Working Force (300,000 strokes)	初压 Initial Load	终压 Final Load					驱动块 Cam Driver	底座 Cam Holder	驱动块/底座 Cam Driver/Cam Holder	
47.3	49.0 (5.0)	98.0 (10.0)	548.0 (55.9)	2740.0 (279.5)	43.0	KEAC	100	65	12-13			SOUK



Order

Catalog No. (W) - (θ) - 销孔直径 Dowel Pin Hole Diameter

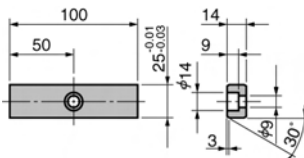
KEAC 100 - 65

KEAC 100 - 65 - HK13

KEAC 100 - 65 - HDK13

- ...销孔预钻孔 Dowel Pin Prepared hole
- ...销孔13 (H7) 仅驱动块 Dowel Pin hole h13(H7) for cam driver only
- ...销孔13 (H7) 驱动块和底座 Dowel Pin hole h13(H7) for both holder and driver

■ 键详图 Key Specification



KEAC 100

# KEAC100-70

**Cam Diagram**

Travel: 58.5  
Press Travel: 54.9  
70°

**零部件表 Table of Components**

代号 No.	名称 Description	数量 Qty	材料和备注 Material and Remark
①	滑动块 Cam Slider	1	QT450
②	驱动块 Cam Driver	1	QT450
③	底座 Cam Holder	1	QT450
④	压板 Slide Plate	2	45
⑤	强制拉回 Positive Return Follower	2	45
⑥	挡板 Spring Plate	1	45
⑦	弹簧销 Spring Guide Pin	2	φ14 × 50
⑧	螺旋弹簧 Coil Spring	2	TM30-100
⑨	缓冲块 Stopper	2	φ22 × 15
⑩	内六角螺钉 Hexagon Socket Head Bolt	6	M12 × 35
⑪	内六角螺钉 Hexagon Socket Head Bolt	2	M8 × 25
⑫	内六角螺钉 Hexagon Socket Head Bolt	4	M16 × 45

行程 Travel S	加工力 Working Force kN(tonf)		弹簧力 Spring Force N(kgf)		总重量 Total Weight kg	代号 Catalog No.	(W)	(θ)	销孔孔径选择 Selection of Dowel Pin Hole Diameter(H7)			SANKYO 代号对照 Catalog No.
	标准加工力 (100万回) Standard Working Force (one million strokes)	允许加工力 (30万回) Allowable Working Force (300,000 strokes)	初压 Initial Load	终压 Final Load					驱动块 Cam Driver	底座 Cam Holder	驱动块/底座 Cam Driver/ Cam Holder	
58.5	49.0 (5.0)	98.0 (10.0)	548.0 (55.9)	2740.0 (279.5)	41.8	KEAC	100	70	12-13			SOUK



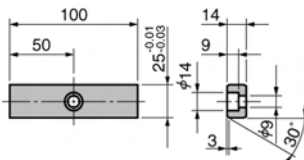
Order

Catalog No. (W) - (θ) - 销孔直径 Dowel Pin Hole Diameter

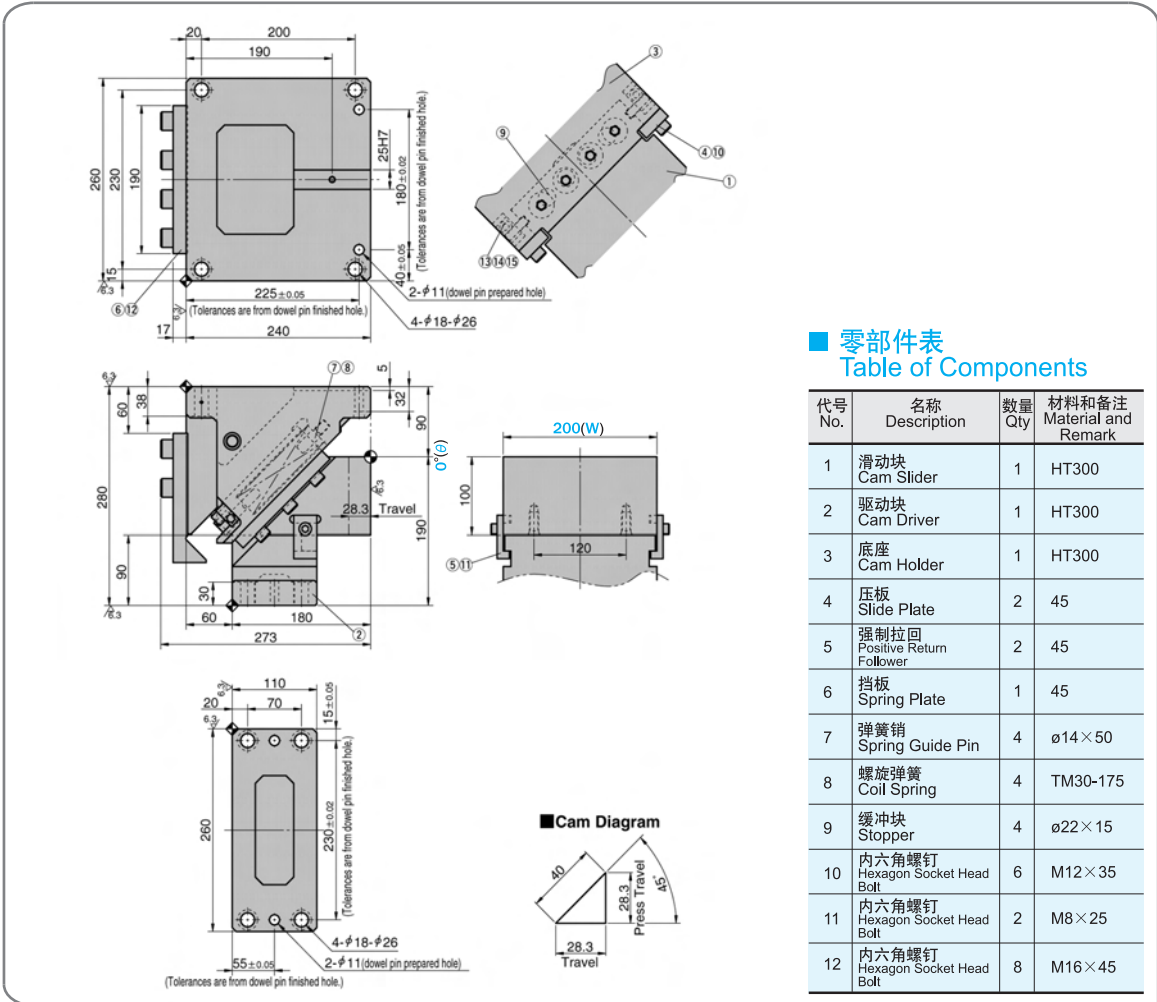
- KEAC 100 - 70
- KEAC 100 - 70 - HK13
- KEAC 100 - 70 - HDK13

- ...销孔预钻孔 Dowel Pin Prepard hole
- ...销孔13 (H7) 仅驱动块 Dowel Pin hole h13(H7) for cam driver only
- ...销孔13 (H7) 驱动块和底座 Dowel Pin hole h13(H7) for both holder and driver

■ 键详图 Key Specification



# KEAC200-00



■ 零部件表  
Table of Components

代号 No.	名称 Description	数量 Qty	材料和备注 Material and Remark
1	滑动块 Cam Slider	1	HT300
2	驱动块 Cam Driver	1	HT300
3	底座 Cam Holder	1	HT300
4	压板 Slide Plate	2	45
5	强制拉回 Positive Return Follower	2	45
6	挡板 Spring Plate	1	45
7	弹簧销 Spring Guide Pin	4	φ14×50
8	螺旋弹簧 Coil Spring	4	TM30-175
9	缓冲块 Stopper	4	φ22×15
10	内六角螺钉 Hexagon Socket Head Bolt	6	M12×35
11	内六角螺钉 Hexagon Socket Head Bolt	2	M8×25
12	内六角螺钉 Hexagon Socket Head Bolt	8	M16×45

行程 Travel S	加工力 Working Force kN(tonf)		弹簧力 Spring Force N(kgf)		滑块重量 Slider Weight kg	总重量 Total Weight kg	代号 Catalog No.	(W)	(θ)	销孔孔径选择 Selection of Dowel Pin Hole Diameter(H7)			SANKYO 代号对照 Catalog No.
	标准加工力 (100万回) Standard Working Force (one million strokes)	允许加工力 (30万回) Allowable Working Force (300,000 strokes)	初压 Initial Load	终压 Final Load						驱动块 Cam Driver	底座 Cam Holder	驱动块/底座 Cam Driver/ Cam Holder	
28.3	98.1 (10.0)	196.2 (20.0)	626.0 (63.8)	5634.0 (574.2)	25.7	81.5	KEAC	200	00	12-13-16			SOUK



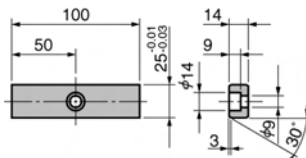
Order

Catalog No. (W) - (θ) - 销孔直径 Dowel Pin Hole Diameter

- KEAC 200 - 00
- KEAC 200 - 00 - HK13
- KEAC 200 - 00 - HDK13

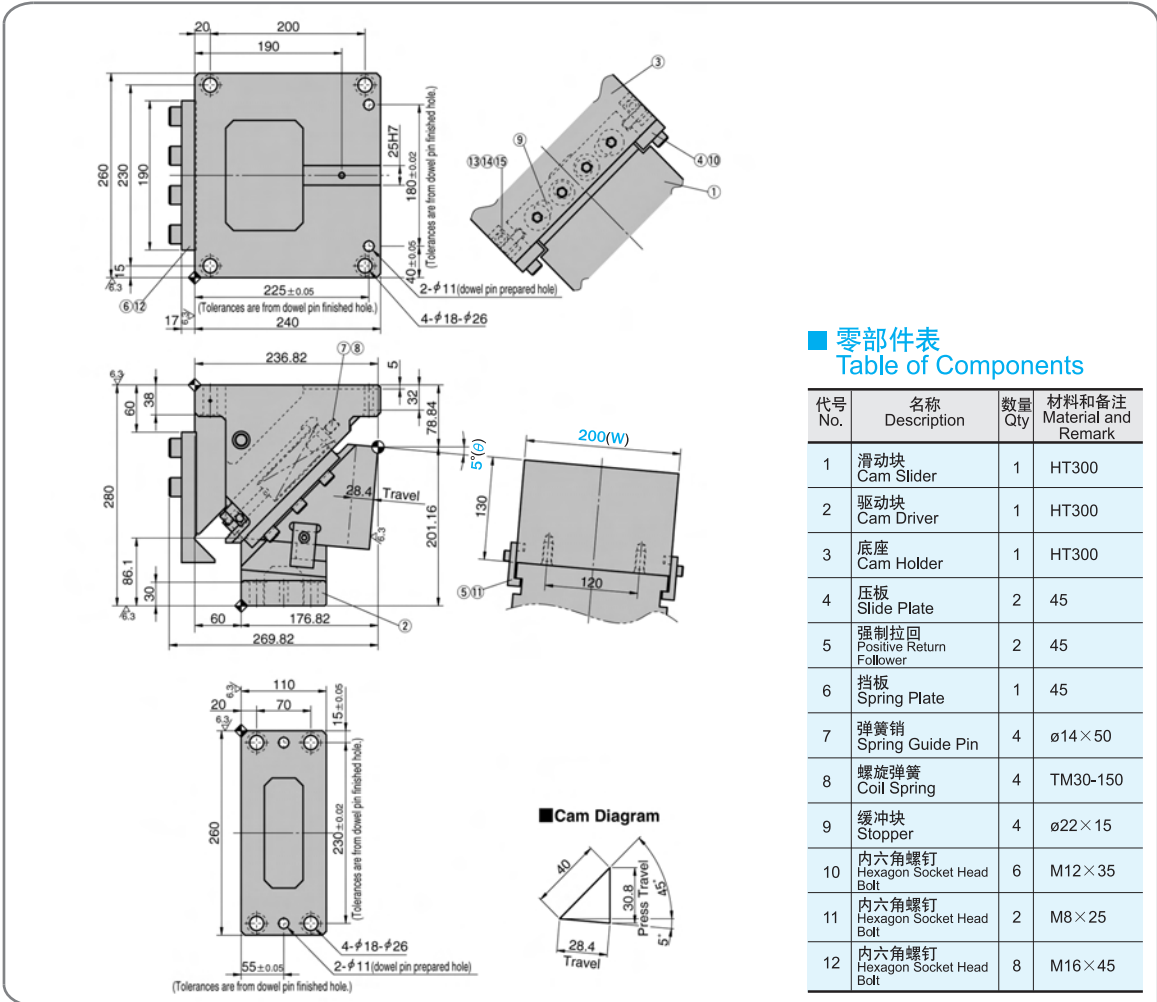
- ...销孔预钻孔 Dowel Pin Prepard hole
- ...销孔13 (H7) 仅驱动块 Dowel Pin hole h13(H7) for cam driver only
- ...销孔13 (H7) 驱动块和底座 Dowel Pin hole h13(H7) for both holder and driver

■ 键详图 Key Specification



KEAC  
200

# KEAC200-05



零部件表  
Table of Components

代号 No.	名称 Description	数量 Qty	材料和备注 Material and Remark
1	滑动块 Cam Slider	1	HT300
2	驱动块 Cam Driver	1	HT300
3	底座 Cam Holder	1	HT300
4	压板 Slide Plate	2	45
5	强制拉回 Positive Return Follower	2	45
6	挡板 Spring Plate	1	45
7	弹簧销 Spring Guide Pin	4	φ14×50
8	螺旋弹簧 Coil Spring	4	TM30-150
9	缓冲块 Stopper	4	φ22×15
10	内六角螺钉 Hexagon Socket Head Bolt	6	M12×35
11	内六角螺钉 Hexagon Socket Head Bolt	2	M8×25
12	内六角螺钉 Hexagon Socket Head Bolt	8	M16×45

行程 Travel S	加工力 Working Force kN(tonf)		弹簧力 Spring Force N(kgf)		滑块重量 Slider Weight kg	总重量 Total Weight kg	代号 Catalog No.	(W)	(θ)	销孔孔径选择 Selection of Dowel Pin Hole Diameter(H7)			SANKYO 代号对照 Catalog No.
	标准加工力 (100万回) Standard Working Force (one million strokes)	允许加工力 (30万回) Allowable Working Force (300,000 strokes)	初压 Initial Load	终压 Final Load						驱动块 Cam Driver	底座 Cam Holder	驱动块/底座 Cam Driver/ Cam Holder	
28.4	98.1 (10.0)	196.2 (20.0)	292.8 (29.8)	6148.8 (626.6)	30.4	82.3	KEAC	200	05	12-13-16			SOUK



Order

Catalog No. (W) - (θ) - 销孔直径  
Dowel Pin Hole Diameter

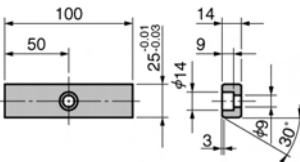
KEAC 200 - 05

KEAC 200 - 05 - HK13

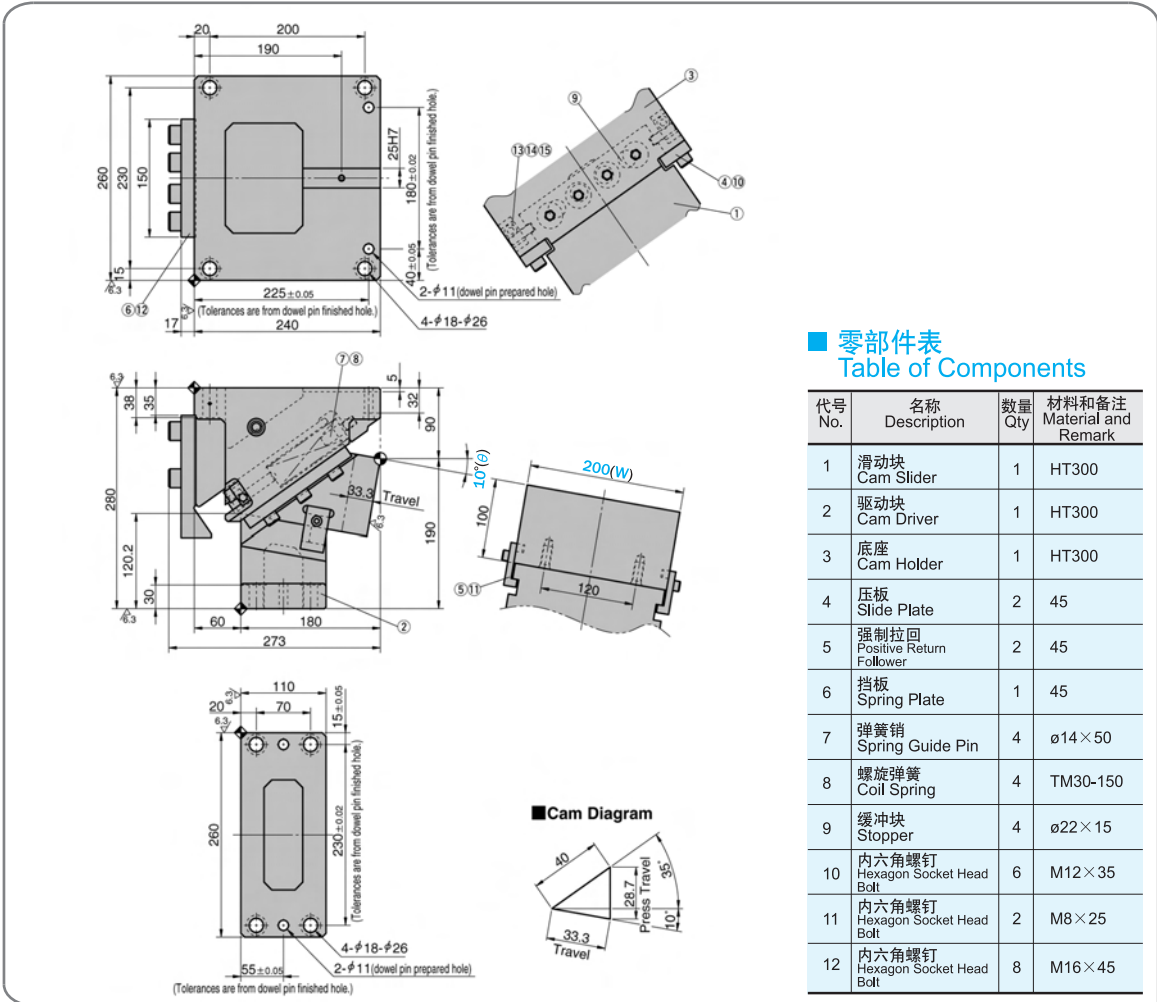
KEAC 200 - 05 - HDK13

- ...销孔预钻孔  
Dowel Pin Prepared hole
- ...销孔13 (H7) 仅驱动块  
Dowel Pin hole h13(H7) for cam driver only
- ...销孔13 (H7) 驱动块和底座  
Dowel Pin hole h13(H7) for both holder and driver

键详图 Key Specification



# KEAC200-10



■ 零部件表  
Table of Components

代号 No.	名称 Description	数量 Qty	材料和备注 Material and Remark
1	滑动块 Cam Slider	1	HT300
2	驱动块 Cam Driver	1	HT300
3	底座 Cam Holder	1	HT300
4	压板 Slide Plate	2	45
5	强制拉回 Positive Return Follower	2	45
6	挡板 Spring Plate	1	45
7	弹簧销 Spring Guide Pin	4	φ14×50
8	螺旋弹簧 Coil Spring	4	TM30-150
9	缓冲块 Stopper	4	φ22×15
10	内六角螺钉 Hexagon Socket Head Bolt	6	M12×35
11	内六角螺钉 Hexagon Socket Head Bolt	2	M8×25
12	内六角螺钉 Hexagon Socket Head Bolt	8	M16×45

行程 Travel S	加工力 Working Force kN(tonf)		弹簧力 Spring Force N(kgf)		滑块重量 Slider Weight kg	总重量 Total Weight kg	代号 Catalog No.	(W)	(θ)	销孔孔径选择 Selection of Dowel Pin Hole Diameter(H7)			SANKYO 代号对照 Catalog No.
	标准加工力 (100万回) Standard Working Force (one million strokes)	允许加工力 (30万回) Allowable Working Force (300,000 strokes)	初压 Initial Load	终压 Final Load						驱动块 Cam Driver	底座 Cam Holder	驱动块/底座 Cam Driver/ Cam Holder	
33.3	98.1 (10.0)	196.2 (20.0)	292.8 (29.8)	6148.8 (626.6)	23.7	75.7	KEAC	200	10	12-13-16			SOUK



Order

Catalog No. (W) - (θ) - 销孔直径 Dowel Pin Hole Diameter

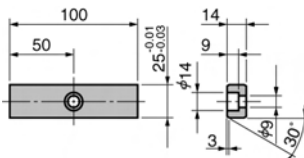
KEAC 200 - 10

KEAC 200 - 10 - HK13

KEAC 200 - 10 - HDK13

- ...销孔预钻孔 Dowel Pin Prepared hole
- ...销孔13 (H7) 仅驱动块 Dowel Pin hole h13(H7) for cam driver only
- ...销孔13 (H7) 驱动块和底座 Dowel Pin hole h13(H7) for both holder and driver

■ 键详图 Key Specification



KEAC 200



# KEAC200-15

**Cam Diagram**

40  
31.7  
33.9  
15°  
35°  
Press Travel  
Travel

■ 零部件表  
Table of Components

代号 No.	名称 Description	数量 Qty	材料和备注 Material and Remark
1	滑动块 Cam Slider	1	HT300
2	驱动块 Cam Driver	1	HT300
3	底座 Cam Holder	1	HT300
4	压板 Slide Plate	2	45
5	强制拉回 Positive Return Follower	2	45
6	挡板 Spring Plate	1	45
7	弹簧销 Spring Guide Pin	4	φ14×50
8	螺旋弹簧 Coil Spring	4	TM30-150
9	缓冲块 Stopper	4	φ22×15
10	内六角螺钉 Hexagon Socket Head Bolt	6	M12×35
11	内六角螺钉 Hexagon Socket Head Bolt	2	M8×25
12	内六角螺钉 Hexagon Socket Head Bolt	8	M16×45

行程 Travel S	加工力 Working Force kN(tonf)		弹簧力 Spring Force N(kgf)		滑块重量 Slider Weight kg	总重量 Total Weight kg	代号 Catalog No.	(W)	(θ)	销孔孔径选择 Selection of Dowel Pin Hole Diameter(H7)			SANKYO 代号对照 Catalog No.
	标准加工力 (100万回) Standard Working Force (one million strokes)	允许加工力 (30万回) Allowable Working Force (300,000 strokes)	初压 Initial Load	终压 Final Load						驱动块 Cam Driver	底座 Cam Holder	驱动块/底座 Cam Driver/ Cam Holder	
33.9	98.1 (10.0)	196.2 (20.0)	292.8 (29.8)	6148.8 (626.6)	30.4	80.5	KEAC	200	15	12-13-16			SOUK



Order

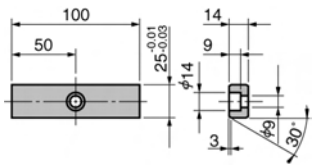
Catalog No. **KEAC** (W) **200** - (θ) **15** - 销孔直径 Dowel Pin Hole Diameter

**KEAC 200 - 15 - HK13**

**KEAC 200 - 15 - HDK13**

- ...销孔预钻孔 Dowel Pin Prepard hole
- ...销孔13 (H7) 仅驱动块 Dowel Pin hole h13(H7) for cam driver only
- ...销孔13 (H7) 驱动块和底座 Dowel Pin hole h13(H7) for both holder and driver

■ 键详图 Key Specification



# KEAC200-20

**■ 零部件表 Table of Components**

代号 No.	名称 Description	数量 Qty	材料和备注 Material and Remark
1	滑动块 Cam Slider	1	HT300
2	驱动块 Cam Driver	1	HT300
3	底座 Cam Holder	1	HT300
4	压板 Slide Plate	2	45
5	强制拉回 Positive Return Follower	2	45
6	挡板 Spring Plate	1	45
7	弹簧销 Spring Guide Pin	4	φ14×50
8	螺旋弹簧 Coil Spring	4	TM30-125
9	缓冲块 Stopper	4	φ22×15
10	内六角螺钉 Hexagon Socket Head Bolt	6	M12×35
11	内六角螺钉 Hexagon Socket Head Bolt	2	M8×25
12	内六角螺钉 Hexagon Socket Head Bolt	8	M16×45

**■ Cam Diagram**

行程 Travel S	加工力 Working Force kN(tonf)		弹簧力 Spring Force N(kgf)		滑块重量 Slider Weight kg	总重量 Total Weight kg	代号 Catalog No.	(W)	(θ)	销孔孔径选择 Selection of Dowel Pin Hole Diameter(H7)			SANKY0 代号对照 Catalog No.
	标准加工力 (100万回) Standard Working Force (one million strokes)	允许加工力 (30万回) Allowable Working Force (300,000 strokes)	初压 Initial Load	终压 Final Load						驱动块 Cam Driver	底座 Cam Holder	驱动块/底座 Cam Driver/ Cam Holder	
30.9	98.1 (10.0)	196.2 (20.0)	350.4 (35.8)	5956.8 (607.9)	24.5	46.1	KEAC	200	20	12-13-16			SOUK



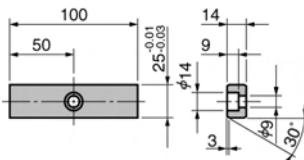
Order

Catalog No. (W) - (θ) - 销孔直径 Dowel Pin Hole Diameter

- KEAC 200 - 20
- KEAC 200 - 20 - HK13
- KEAC 200 - 20 - HDK13

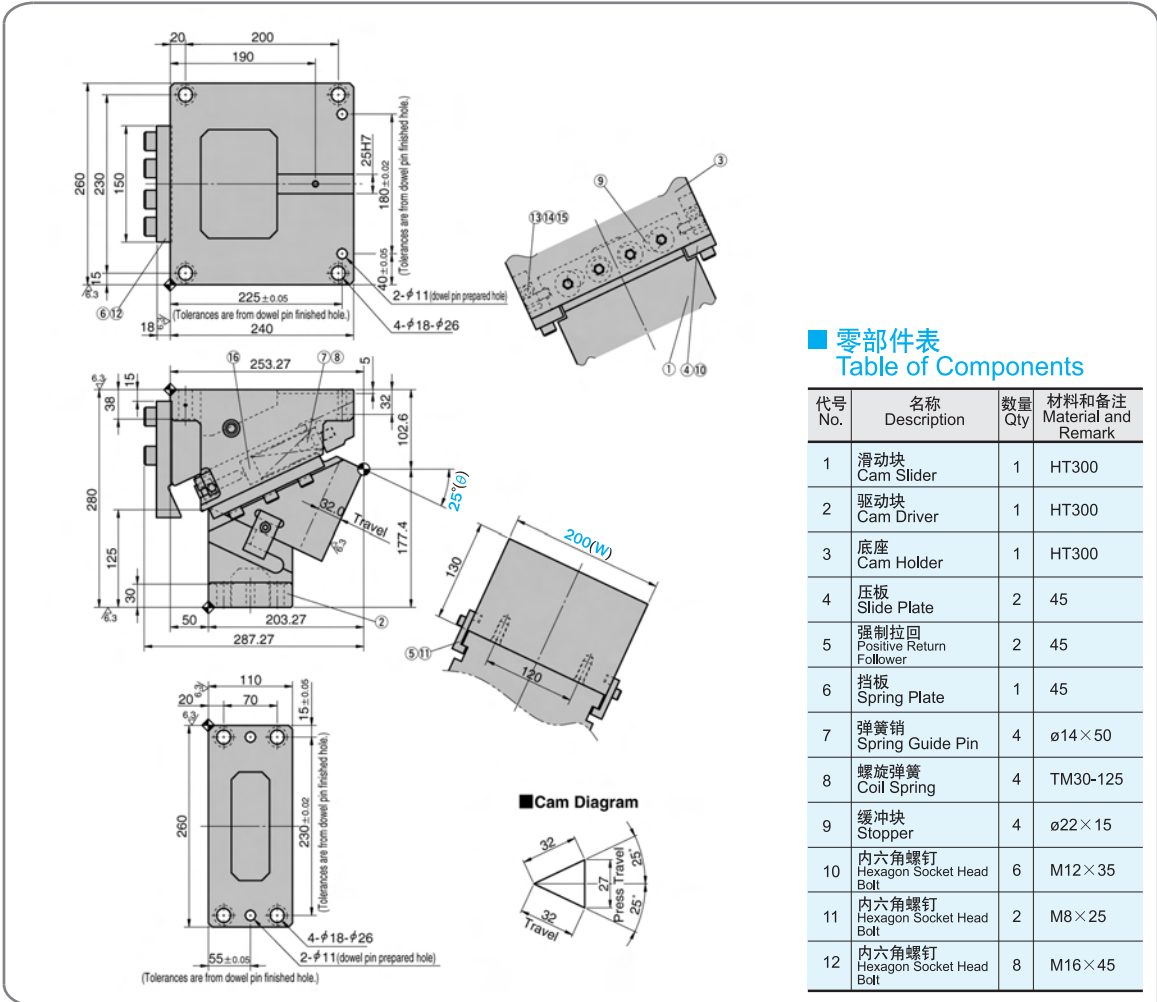
- ...销孔预钻孔 Dowel Pin Prepard hole
- ...销孔13 (H7) 仅驱动块 Dowel Pin hole h13(H7) for cam driver only
- ...销孔13 (H7) 驱动块和底座 Dowel Pin hole h13(H7) for both holder and driver

■ 键详图 Key Specification



KEAC 200

# KEAC200-25



■ 零部件表  
Table of Components

代号 No.	名称 Description	数量 Qty	材料和备注 Material and Remark
1	滑动块 Cam Slider	1	HT300
2	驱动块 Cam Driver	1	HT300
3	底座 Cam Holder	1	HT300
4	压板 Slide Plate	2	45
5	强制拉回 Positive Return Follower	2	45
6	挡板 Spring Plate	1	45
7	弹簧销 Spring Guide Pin	4	φ14×50
8	螺旋弹簧 Coil Spring	4	TM30-125
9	缓冲块 Stopper	4	φ22×15
10	内六角螺钉 Hexagon Socket Head Bolt	6	M12×35
11	内六角螺钉 Hexagon Socket Head Bolt	2	M8×25
12	内六角螺钉 Hexagon Socket Head Bolt	8	M16×45

行程 Travel S	加工力 Working Force kN(tonf)		弹簧力 Spring Force N(kgf)		滑块重量 Slider Weight kg	总重量 Total Weight kg	代号 Catalog No.	(W)	(θ)	销孔孔径选择 Selection of Dowel Pin Hole Diameter(H7)			SANKYO 代号对照 Catalog No.
	标准加工力 (100万回) Standard Working Force (one million strokes)	允许加工力 (30万回) Allowable Working Force (300,000 strokes)	初压 Initial Load	终压 Final Load						驱动块 Cam Driver	底座 Cam Holder	驱动块/底座 Cam Driver/ Cam Holder	
32.0	98.1 (10.0)	196.2 (20.0)	350.4 (35.8)	5956.8 (607.9)	30.4	80.1	KEAC	200	25	12-13-16			SOUK



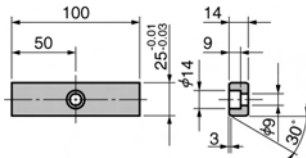
Order

Catalog No. (W) - (θ) - 销孔直径  
Dowel Pin Hole Diameter

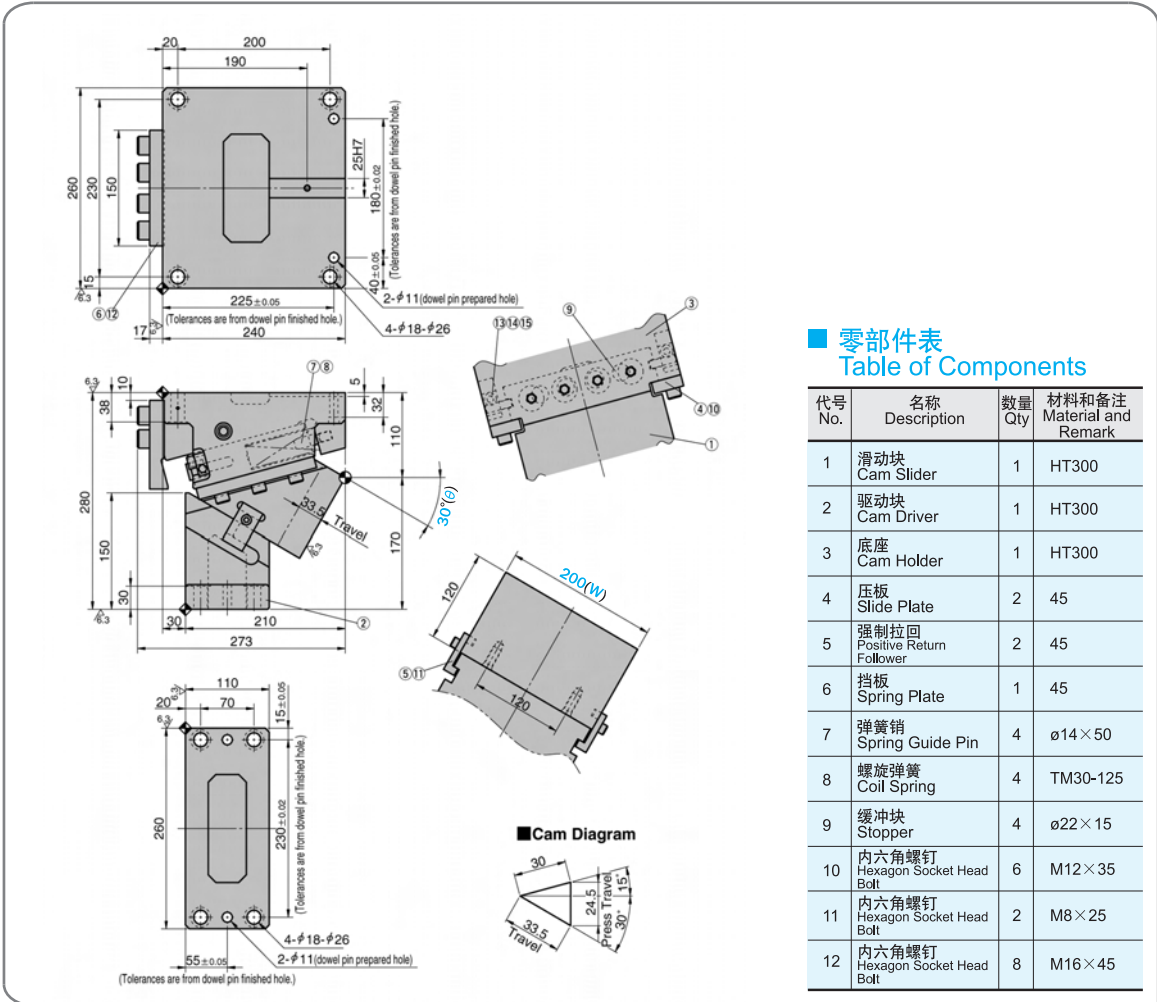
- KEAC 200 - 25
- KEAC 200 - 25 - HK13
- KEAC 200 - 25 - HDK13

- ...销孔预钻孔  
Dowel Pin Prepard hole
- ...销孔13 (H7) 仅驱动块  
Dowel Pin hole h13(H7) for cam driver only
- ...销孔13 (H7) 驱动块和底座  
Dowel Pin hole h13(H7) for both holder and driver

■ 键详图 Key Specification



# KEAC200-30


**■ 零部件表**  
 Table of Components

代号 No.	名称 Description	数量 Qty	材料和备注 Material and Remark
1	滑动块 Cam Slider	1	HT300
2	驱动块 Cam Driver	1	HT300
3	底座 Cam Holder	1	HT300
4	压板 Slide Plate	2	45
5	强制拉回 Positive Return Follower	2	45
6	挡板 Spring Plate	1	45
7	弹簧销 Spring Guide Pin	4	φ14×50
8	螺旋弹簧 Coil Spring	4	TM30-125
9	缓冲块 Stopper	4	φ22×15
10	内六角螺钉 Hexagon Socket Head Bolt	6	M12×35
11	内六角螺钉 Hexagon Socket Head Bolt	2	M8×25
12	内六角螺钉 Hexagon Socket Head Bolt	8	M16×45

行程 Travel S	加工力 Working Force kN(tonf)		弹簧力 Spring Force N(kgf)		滑块重量 Slider Weight kg	总重量 Total Weight kg	代号 Catalog No.	(W)	(θ)	销孔孔径选择 Selection of Dowel Pin Hole Diameter(H7)			SANKYO 代号对照 Catalog No.
	标准加工力 (100万回) Standard Working Force (one million strokes)	允许加工力 (30万回) Allowable Working Force (300,000 strokes)	初压 Initial Load	终压 Final Load						驱动块 Cam Driver	底座 Cam Holder	驱动块/底座 Cam Driver/ Cam Holder	
33.5	98.1 (10.0)	196.2 (20.0)	350.4 (35.8)	5606.4 (572.2)	28.1	77.0	KEAC	200	30	12-13-16			SOUK

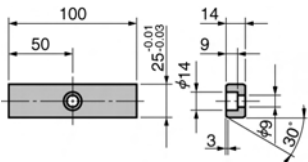


Order

Catalog No. (W) - (θ) - 销孔直径 Dowel Pin Hole Diameter

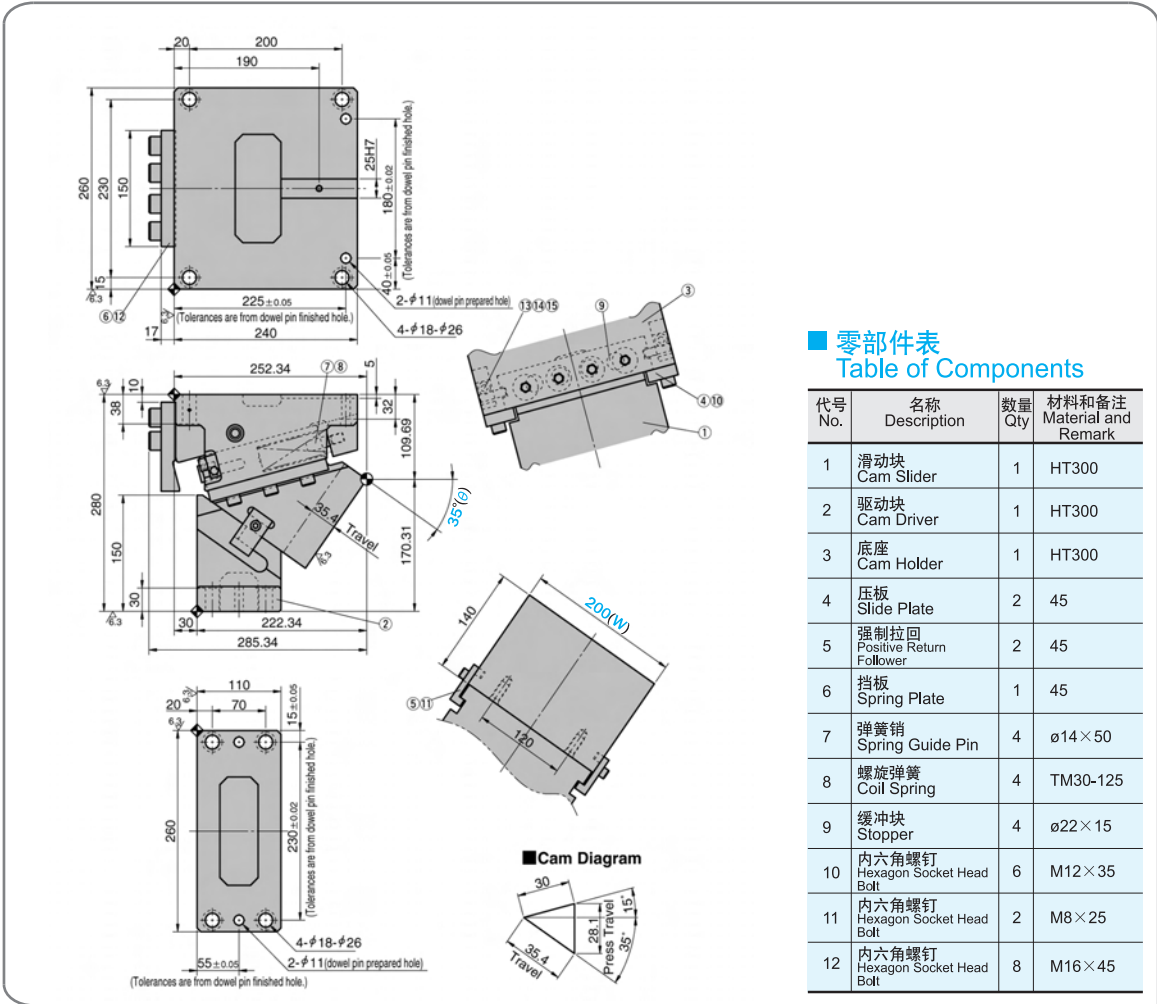
- KEAC 200 - 30
- KEAC 200 - 30 - HK13
- KEAC 200 - 30 - HDK13

- ...销孔预钻孔 Dowel Pin Prepared hole
- ...销孔13(H7)仅驱动块 Dowel Pin hole h13(H7) for cam driver only
- ...销孔13(H7)驱动块和底座 Dowel Pin hole h13(H7) for both holder and driver

**■ 键详图 Key Specification**


KEAC 200

# KEAC200-35



■ 零部件表  
Table of Components

代号 No.	名称 Description	数量 Qty	材料和备注 Material and Remark
1	滑动块 Cam Slider	1	HT300
2	驱动块 Cam Driver	1	HT300
3	底座 Cam Holder	1	HT300
4	压板 Slide Plate	2	45
5	强制拉回 Positive Return Follower	2	45
6	挡板 Spring Plate	1	45
7	弹簧销 Spring Guide Pin	4	φ14×50
8	螺旋弹簧 Coil Spring	4	TM30-125
9	缓冲块 Stopper	4	φ22×15
10	内六角螺钉 Hexagon Socket Head Bolt	6	M12×35
11	内六角螺钉 Hexagon Socket Head Bolt	2	M8×25
12	内六角螺钉 Hexagon Socket Head Bolt	8	M16×45

行程 Travel S	加工力 Working Force kN(tonf)		弹簧力 Spring Force N(kgf)		滑块重量 Slider Weight kg	总重量 Total Weight kg	代号 Catalog No.	(W)	(θ)	销孔孔径选择 Selection of Dowel Pin Hole Diameter(H7)			SANKYO 代号对照 Catalog No.
	标准加工力 (100万回) Standard Working Force (one million strokes)	允许加工力 (30万回) Allowable Working Force (300,000 strokes)	初压 Initial Load	终压 Final Load						驱动块 Cam Driver	底座 Cam Holder	驱动块/底座 Cam Driver/ Cam Holder	
35.4	98.1 (10.0)	196.2 (20.0)	350.4 (35.8)	5606.4 (572.2)	30.9	80.9	KEAC	200	35	12-13-16			SOUK

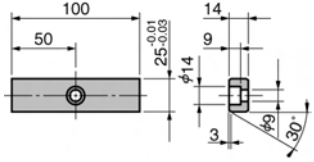


Order

Catalog No. **KEAC** (W) - (θ) - 销孔直径 Dowel Pin Hole Diameter  
**200 - 35**  
**KEAC 200 - 35 - HK13**  
**KEAC 200 - 35 - HDK13**

- …销孔预钻孔 Dowel Pin Prepared hole
- …销孔13 (H7) 仅驱动块 Dowel Pin hole h13(H7) for cam driver only
- …销孔13 (H7) 驱动块和底座 Dowel Pin hole h13(H7) for both holder and driver

■ 键详图 Key Specification



# KEAC200-40

**Cam Diagram**

30  
5'  
39  
Travel  
27.7  
Press Travel  
40°

20  
200  
190  
260  
230  
150  
15  
6.3  
17  
225±0.05  
240  
2.5H7  
180±0.02  
0±0.05  
(Tolerances are from dowel pin finished hole.)  
2-φ11 (dowel pin prepared hole)  
4-φ18-φ26

13 14 15  
9  
3  
3  
10  
1

6.3  
10  
20  
5  
32  
115  
160  
160  
30  
273  
210  
30.0  
Travel  
40°(±)

110  
70  
15±0.05  
20  
6.3  
260  
230±0.02  
(Tolerances are from dowel pin finished hole.)  
55±0.05  
2-φ11 (dowel pin prepared hole)  
4-φ18-φ26

120  
200(W)  
120

### 零部件表 Table of Components

代号 No.	名称 Description	数量 Qty	材料和备注 Material and Remark
1	滑动块 Cam Slider	1	HT300
2	驱动块 Cam Driver	1	HT300
3	底座 Cam Holder	1	HT300
4	压板 Slide Plate	2	45
5	强制拉回 Positive Return Follower	2	45
6	挡板 Spring Plate	1	45
7	弹簧销 Spring Guide Pin	4	φ14×50
8	螺旋弹簧 Coil Spring	4	TM30-125
9	缓冲块 Stopper	4	φ22×15
10	内六角螺钉 Hexagon Socket Head Bolt	6	M12×35
11	内六角螺钉 Hexagon Socket Head Bolt	2	M8×25
12	内六角螺钉 Hexagon Socket Head Bolt	8	M16×45

行程 Travel S	加工力 Working Force kN(tonf)		弹簧力 Spring Force N(kgf)		滑块重量 Slider Weight kg	总重量 Total Weight kg	代号 Catalog No.	(W)	(θ)	销孔孔径选择 Selection of Dowel Pin Hole Diameter(H7)			SANKYO 代号对照 Catalog No.
	标准加工力 (100万回) Standard Working Force (one million strokes)	允许加工力 (30万回) Allowable Working Force (300,000 strokes)	初压 Initial Load	终压 Final Load						驱动块 Cam Driver	底座 Cam Holder	驱动块/底座 Cam Driver/ Cam Holder	
39.0	98.1 (10.0)	196.2 (20.0)	350.4 (35.8)	5606.4 (572.2)	28.8	71.4	KEAC	200	40	12-13-16			SOUK



Order

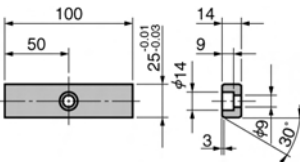
Catalog No. **KEAC** (W) **200** - (θ) **40** - 销孔直径  
Dowel Pin Hole Diameter

**KEAC 200 - 40 - HK13**

**KEAC 200 - 40 - HDK13**

- ...销孔预钻孔  
Dowel Pin Prepared hole
- ...销孔13 (H7) 仅驱动块  
Dowel Pin hole h13(H7) for cam driver only
- ...销孔13 (H7) 驱动块和底座  
Dowel Pin hole h13(H7) for both holder and driver

### 键详图 Key Specification



KEAC  
200



# KEAC200-45

**Cam Diagram**

30  
5  
42.3 Travel  
32.5 Press Travel  
45°

**零部件表 Table of Components**

代号 No.	名称 Description	数量 Qty	材料和备注 Material and Remark
1	滑动块 Cam Slider	1	HT300
2	驱动块 Cam Driver	1	HT300
3	底座 Cam Holder	1	HT300
4	压板 Slide Plate	2	45
5	强制拉回 Positive Return Follower	2	45
6	挡板 Spring Plate	1	45
7	弹簧销 Spring Guide Pin	4	φ14×50
8	螺旋弹簧 Coil Spring	4	TM30-125
9	缓冲块 Stopper	4	φ22×15
10	内六角螺钉 Hexagon Socket Head Bolt	6	M12×35
11	内六角螺钉 Hexagon Socket Head Bolt	2	M8×25
12	内六角螺钉 Hexagon Socket Head Bolt	8	M16×45

行程 Travel S	加工力 Working Force kN(tonf)		弹簧力 Spring Force N(kgf)		滑块重量 Slider Weight kg	总重量 Total Weight kg	代号 Catalog No.	(W)	(θ)	销孔孔径选择 Selection of Dowel Pin Hole Diameter(H7)			SANKYO 代号对照 Catalog No.
	标准加工力 (100万回) Standard Working Force (one million strokes)	允许加工力 (30万回) Allowable Working Force (300,000 strokes)	初压 Initial Load	终压 Final Load						驱动块 Cam Driver	底座 Cam Holder	驱动块/底座 Cam Driver/ Cam Holder	
42.3	98.1 (10.0)	196.2 (20.0)	350.4 (35.8)	5606.4 (572.2)	30.9	74.7	KEAC	200	45	12-13-16			SOUK



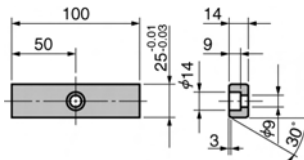
Order

Catalog No. (W) - (θ) - 销孔直径  
Dowel Pin Hole Diameter

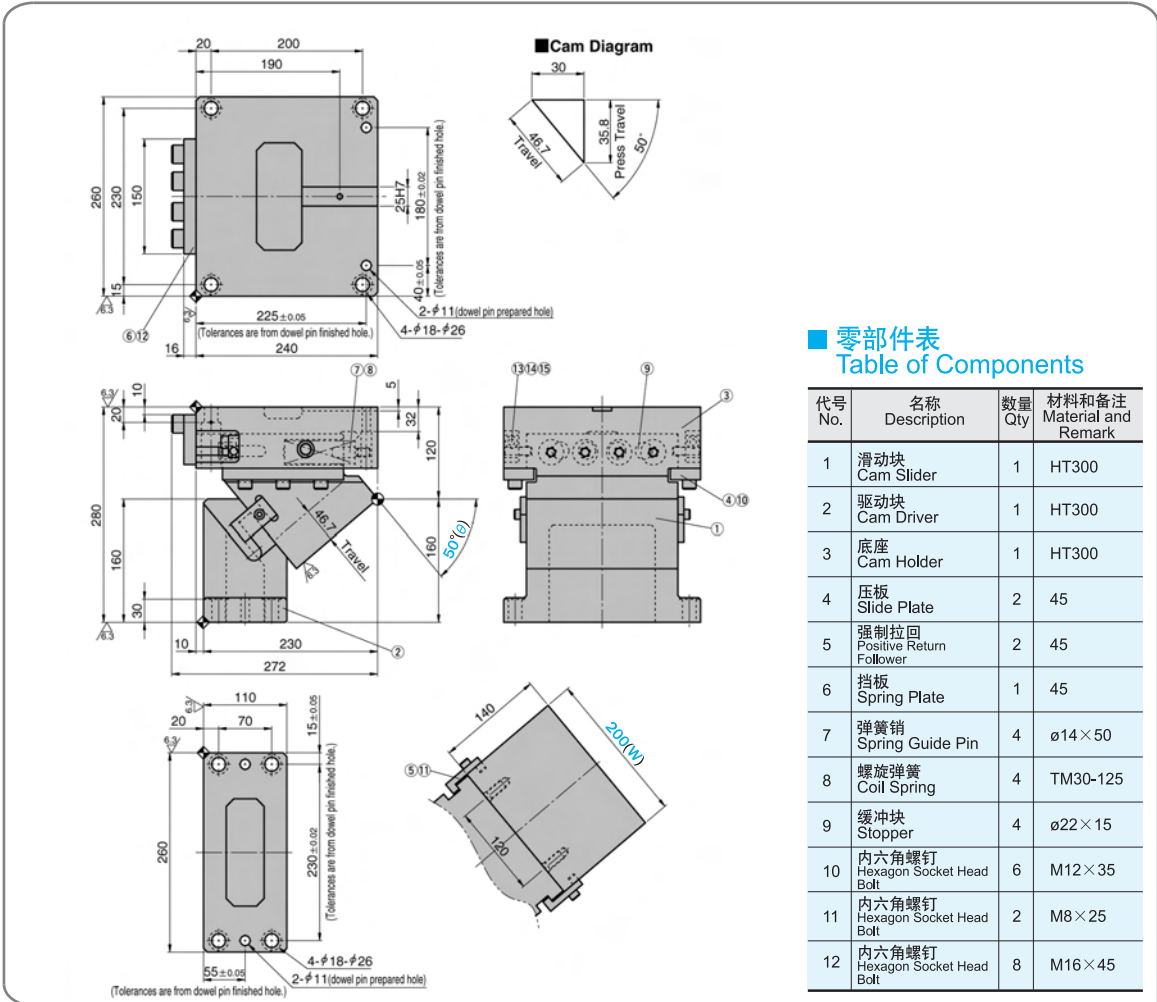
- KEAC 200 - 45
- KEAC 200 - 45 - HK13
- KEAC 200 - 45 - HDK13

- …销孔预钻孔  
Dowel Pin Prepared hole
- …销孔13 (H7) 仅驱动块  
Dowel Pin hole h13(H7) for cam driver only
- …销孔13 (H7) 驱动块和底座  
Dowel Pin hole h13(H7) for both holder and driver

■ 键详图 Key Specification



# KEAC200-50



## 零部件表 Table of Components

代号 No.	名称 Description	数量 Qty	材料和备注 Material and Remark
1	滑动块 Cam Slider	1	HT300
2	驱动块 Cam Driver	1	HT300
3	底座 Cam Holder	1	HT300
4	压板 Slide Plate	2	45
5	强制拉回 Positive Return Follower	2	45
6	挡板 Spring Plate	1	45
7	弹簧销 Spring Guide Pin	4	φ14×50
8	螺旋弹簧 Coil Spring	4	TM30-125
9	缓冲块 Stopper	4	φ22×15
10	内六角螺钉 Hexagon Socket Head Bolt	6	M12×35
11	内六角螺钉 Hexagon Socket Head Bolt	2	M8×25
12	内六角螺钉 Hexagon Socket Head Bolt	8	M16×45

行程 Travel S	加工力 Working Force kN(tonf)		弹簧力 Spring Force N(kgf)		滑块重量 Slider Weight kg	总重量 Total Weight kg	代号 Catalog No.	(W)	(θ)	销孔孔径选择 Selection of Dowel Pin Hole Diameter(H7)			SANKYO 代号对照 Catalog No.
	标准加工力 (100万回) Standard Working Force (one million strokes)	允许加工力 (30万回) Allowable Working Force (300,000 strokes)	初压 Initial Load	终压 Final Load						驱动块 Cam Driver	底座 Cam Holder	驱动块/底座 Cam Driver/ Cam Holder	
46.7	117.7 (12.0)	235.4 (24.0)	350.4 (35.8)	5606.4 (572.2)	31.0	71.6	KEAC	200	50	12-13-16			SOUK



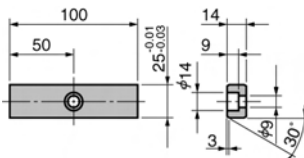
Order

Catalog No. (W) - (θ) - 销孔直径  
Dowel Pin Hole Diameter

KEAC 200 - 50  
KEAC 200 - 50 - HK13  
KEAC 200 - 50 - HDK13

- ...销孔预钻孔  
Dowel Pin Prepared hole
- ...销孔13 (H7) 仅驱动块  
Dowel Pin hole h13(H7) for cam driver only
- ...销孔13 (H7) 驱动块和底座  
Dowel Pin hole h13(H7) for both holder and driver

## 键详图 Key Specification



KEAC  
200

# KEAC200-55

**Cam Diagram**

30  
52.3 Travel  
42.8 Press Travel  
55°

1 2 3 4 5 6 7 8 9 10 11 12

2-φ11 (dowel pin prepared hole)  
4-φ18-φ26

225±0.05 (Tolerances are from dowel pin finished hole.)  
40±0.05 (Tolerances are from dowel pin finished hole.)  
25H7  
180±0.02 (Tolerances are from dowel pin finished hole.)

280  
170  
30  
240  
272

52.3 Travel  
135  
55°(e)

110  
70  
15±0.05 (Tolerances are from dowel pin finished hole.)  
230±0.05 (Tolerances are from dowel pin finished hole.)  
55±0.05 (Tolerances are from dowel pin finished hole.)  
4-φ18-φ26  
2-φ11 (dowel pin prepared hole)

140  
200(W)

## 零部件表 Table of Components

代号 No.	名称 Description	数量 Qty	材料和备注 Material and Remark
1	滑动块 Cam Slider	1	HT300
2	驱动块 Cam Driver	1	HT300
3	底座 Cam Holder	1	HT300
4	压板 Slide Plate	2	45
5	强制拉回 Positive Return Follower	2	45
6	挡板 Spring Plate	1	45
7	弹簧销 Spring Guide Pin	4	φ14×50
8	螺旋弹簧 Coil Spring	4	TM30-125
9	缓冲块 Stopper	4	φ22×15
10	内六角螺钉 Hexagon Socket Head Bolt	6	M12×35
11	内六角螺钉 Hexagon Socket Head Bolt	2	M8×25
12	内六角螺钉 Hexagon Socket Head Bolt	8	M16×45

行程 Travel S	加工力 Working Force kN(tonf)		弹簧力 Spring Force N(kgf)		滑块重量 Slider Weight kg	总重量 Total Weight kg	代号 Catalog No.	(W)	(θ)	销孔孔径选择 Selection of Dowel Pin Hole Diameter(H7)			SANKYO 代号对照 Catalog No.
	标准加工力 (100万回) Standard Working Force (one million strokes)	允许加工力 (30万回) Allowable Working Force (300,000 strokes)	初压 Initial Load	终压 Final Load						驱动块 Cam Driver	底座 Cam Holder	驱动块/底座 Cam Driver/ Cam Holder	
52.3	117.7 (12.0)	235.4 (24.0)	350.4 (35.8)	5606.4 (572.2)	34.8	78.6	KEAC	200	55	12-13-16			SOUK



Order

Catalog No. (W) - (θ) - 销孔直径  
Dowel Pin Hole Diameter

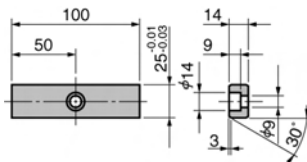
KEAC 200 - 55

KEAC 200 - 55 - HK13

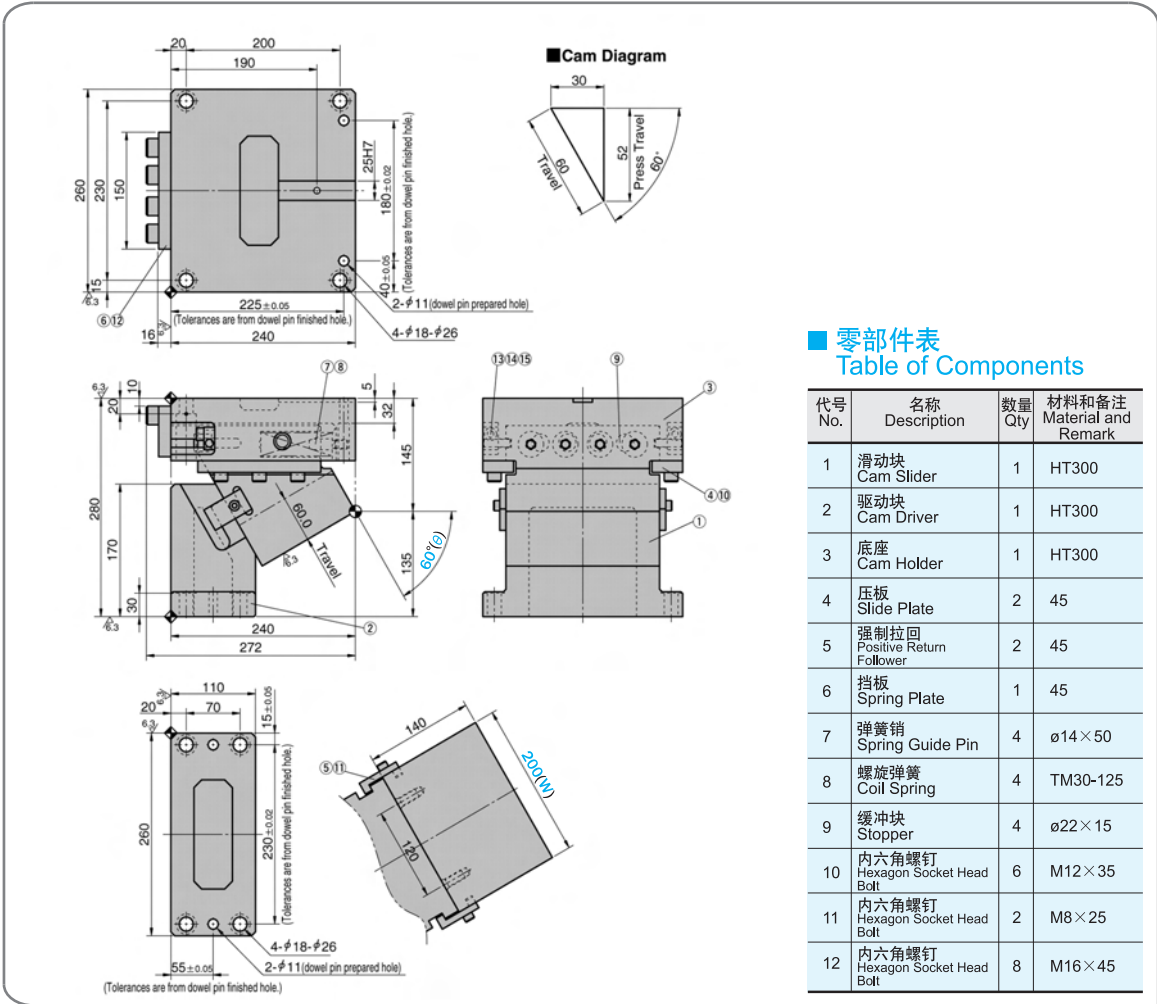
KEAC 200 - 55 - HDK13

- ...销孔预钻孔  
Dowel Pin Prepared hole
- ...销孔13(H7)仅驱动块  
Dowel Pin hole h13(H7) for cam driver only
- ...销孔13(H7)驱动块和底座  
Dowel Pin hole h13(H7) for both holder and driver

## ■ 键详图 Key Specification



# KEAC200-60



## 零部件表 Table of Components

代号 No.	名称 Description	数量 Qty	材料和备注 Material and Remark
1	滑动块 Cam Slider	1	HT300
2	驱动块 Cam Driver	1	HT300
3	底座 Cam Holder	1	HT300
4	压板 Slide Plate	2	45
5	强制拉回 Positive Return Follower	2	45
6	挡板 Spring Plate	1	45
7	弹簧销 Spring Guide Pin	4	φ14 × 50
8	螺旋弹簧 Coil Spring	4	TM30-125
9	缓冲块 Stopper	4	φ22 × 15
10	内六角螺钉 Hexagon Socket Head Bolt	6	M12 × 35
11	内六角螺钉 Hexagon Socket Head Bolt	2	M8 × 25
12	内六角螺钉 Hexagon Socket Head Bolt	8	M16 × 45

行程 Travel S	加工力 Working Force kN(tonf)		弹簧力 Spring Force N(kgf)		滑块重量 Slider Weight kg	总重量 Total Weight kg	代号 Catalog No.	(W)	(θ)	销孔孔径选择 Selection of Dowel Pin Hole Diameter(H7)			SANKYO 代号对照 Catalog No.
	标准加工力 (100万回) Standard Working Force (one million strokes)	允许加工力 (30万回) Allowable Working Force (300,000 strokes)	初压 Initial Load	终压 Final Load						驱动块 Cam Driver	底座 Cam Holder	驱动块/底座 Cam Driver/ Cam Holder	
60.0	117.7 (12.0)	235.4 (24.0)	350.4 (35.8)	5606.4 (572.2)	32.1	73.9	KEAC	200	60	12-13-16			SOUK



Order

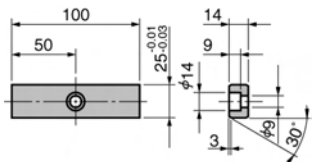
Catalog No. **KEAC** (W) **200** - (θ) **60** - 销孔直径 Dowel Pin Hole Diameter

**KEAC 200 - 60 - HK13**

**KEAC 200 - 60 - HDK13**

- ...销孔预钻孔 Dowel Pin Prepared hole
- ...销孔13 (H7) 仅驱动块 Dowel Pin hole h13(H7) for cam driver only
- ...销孔13 (H7) 驱动块和底座 Dowel Pin hole h13(H7) for both holder and driver

## 键详图 Key Specification



KEAC 200

# KEAC200-65

**Cam Diagram**

20  
47.3 Travel  
42.9 Press Travel  
65°

13 14 15  
9  
3  
4 10  
1

7 8  
5  
32  
145  
280  
180  
30  
240  
272

20  
10  
110  
70  
15 ± 0.05  
230 ± 0.02  
260  
55 ± 0.05  
4-φ18-φ26  
2-φ11 (dowel pin prepared hole)

(Tolerances are from dowel pin finished hole.)

200  
190  
25H7  
180 ± 0.02  
40 ± 0.05  
225 ± 0.05  
240  
4-φ18-φ26  
2-φ11 (dowel pin prepared hole)

(Tolerances are from dowel pin finished hole.)

### 零部件表 Table of Components

代号 No.	名称 Description	数量 Qty	材料和备注 Material and Remark
1	滑动块 Cam Slider	1	HT300
2	驱动块 Cam Driver	1	HT300
3	底座 Cam Holder	1	HT300
4	压板 Slide Plate	2	45
5	强制拉回 Positive Return Follower	2	45
6	挡板 Spring Plate	1	45
7	弹簧销 Spring Guide Pin	4	φ14×50
8	螺旋弹簧 Coil Spring	4	TM30-100
9	缓冲块 Stopper	4	φ22×15
10	内六角螺钉 Hexagon Socket Head Bolt	6	M12×35
11	内六角螺钉 Hexagon Socket Head Bolt	2	M8×25
12	内六角螺钉 Hexagon Socket Head Bolt	8	M16×45

行程 Travel S	加工力 Working Force kN(tonf)		弹簧力 Spring Force N(kgf)		滑块重量 Slider Weight kg	总重量 Total Weight kg	代号 Catalog No.	(W)	(θ)	销孔孔径选择 Selection of Dowel Pin Hole Diameter(H7)			SANKYO 代号对照 Catalog No.
	标准加工力 (100万回) Standard Working Force (one million strokes)	允许加工力 (30万回) Allowable Working Force (300,000 strokes)	初压 Initial Load	终压 Final Load						驱动块 Cam Driver	底座 Cam Holder	驱动块/底座 Cam Driver/ Cam Holder	
47.3	117.7 (12.0)	235.4 (24.0)	1096.0 (111.8)	5480.0 (559.0)	30.2	77.2	KEAC	200	65	12-13-16			SOUK



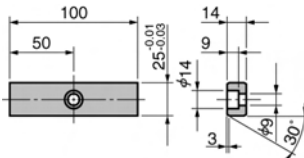
Order

Catalog No. (W) - (θ) - 销孔直径  
Dowel Pin Hole Diameter

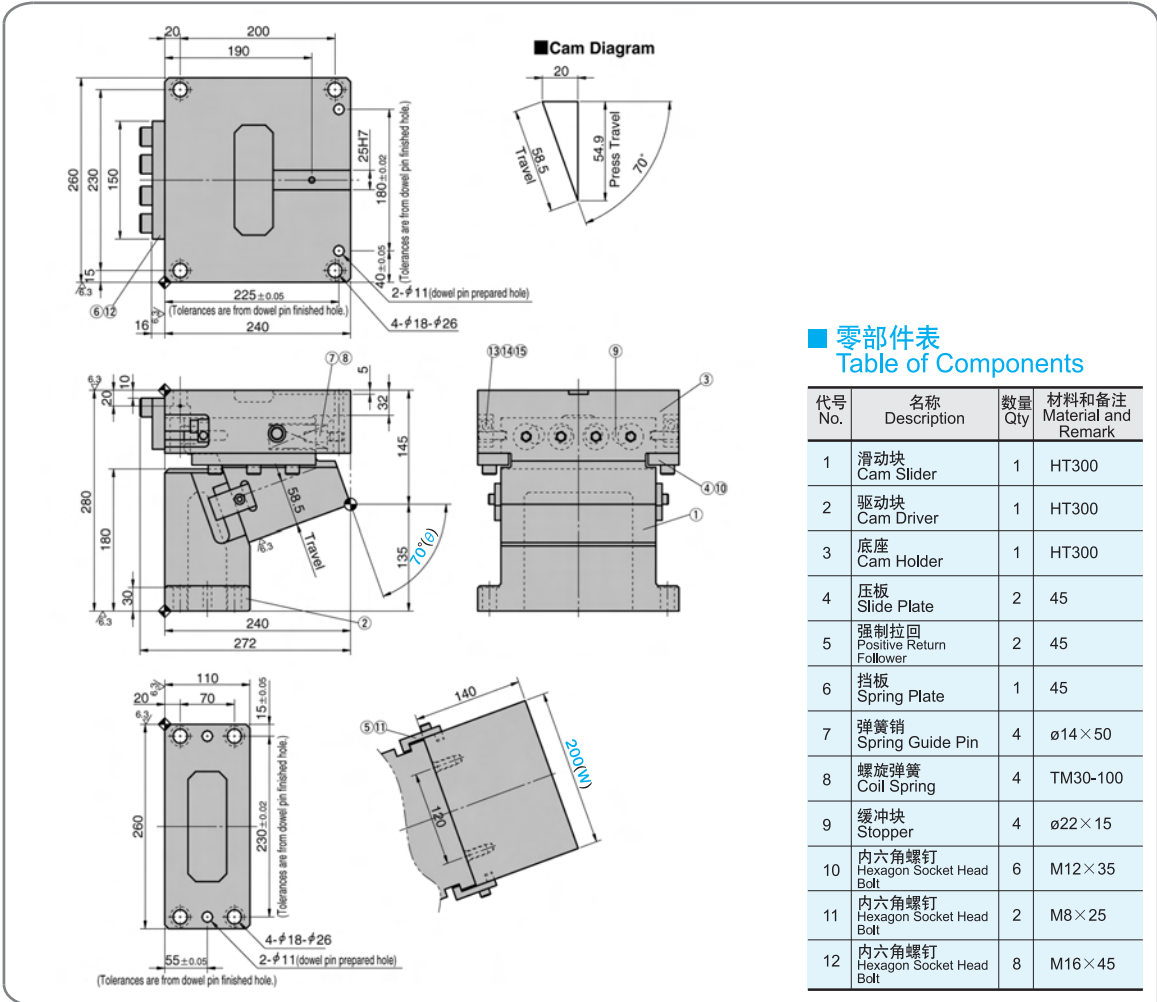
- KEAC 200 - 65
- KEAC 200 - 65 - HK13
- KEAC 200 - 65 - HDK13

- ...销孔预钻孔  
Dowel Pin Prepared hole
- ...销孔13 (H7) 仅驱动块  
Dowel Pin hole h13(H7) for cam driver only
- ...销孔13 (H7) 驱动块和底座  
Dowel Pin hole h13(H7) for both holder and driver

### 键详图 Key Specification



# KEAC200-70



行程 Travel S	加工力 Working Force kN(tonf)		弹簧力 Spring Force N(kgf)		滑块重量 Slider Weight kg	总重量 Total Weight kg	代号 Catalog No.	(W)	(θ)	销孔孔径选择 Selection of Dowel Pin Hole Diameter(H7)			SANKYO 代号对照 Catalog No.
	标准加工力 (100万回) Standard Working Force (one million strokes)	允许加工力 (30万回) Allowable Working Force (300,000 strokes)	初压 Initial Load	终压 Final Load						驱动块 Cam Driver	底座 Cam Holder	驱动块/底座 Cam Driver/ Cam Holder	
58.5	117.7 (12.0)	235.4 (24.0)	1096.0 (111.8)	5480.0 (559.0)	28.8	72.2	KEAC	200	70	12-13-16			SOUK



Order

Catalog No. (W) - (θ) - 销孔直径 Dowel Pin Hole Diameter

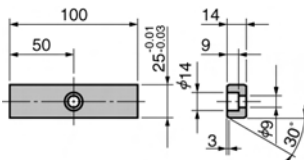
KEAC 200 - 70

KEAC 200 - 70 - HK13

KEAC 200 - 70 - HDK13

- ...销孔预钻孔 Dowel Pin Prepard hole
- ...销孔13 (H7) 仅驱动块 Dowel Pin hole h13(H7) for cam driver only
- ...销孔13 (H7) 驱动块和底座 Dowel Pin hole h13(H7) for both holder and driver

## 键详图 Key Specification



KEAC 200