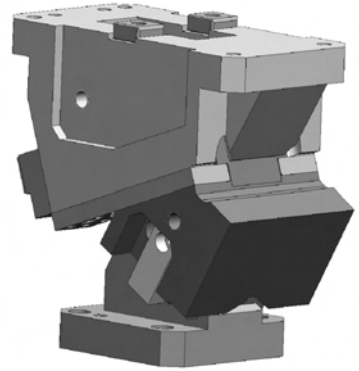


### KACC概要

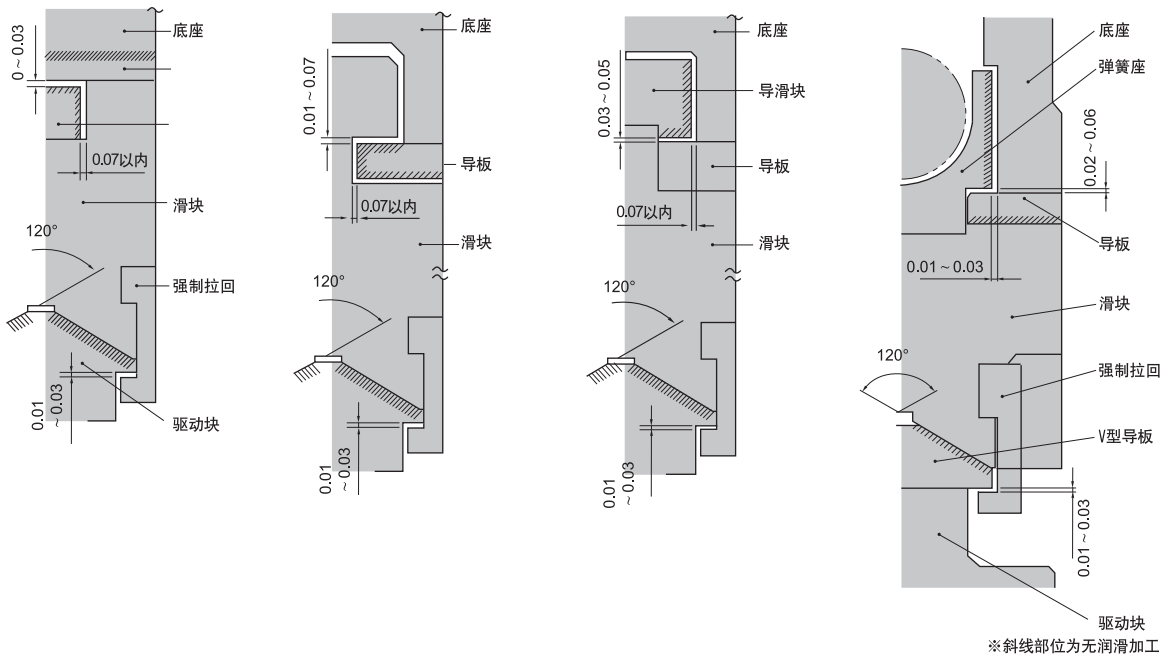
- 多种斜楔宽度可供采用，可减轻模具重量。
- V型导板精确导向。
- 角度 $0^{\circ} \sim 70^{\circ}$ ，每 $5^{\circ}$ 一档。

### KACF概要

- 多种斜楔宽度可供采用，可减轻模具重量。
- V型导板精确导向。
- 角度 $0^{\circ} \sim 70^{\circ}$ ，每 $5^{\circ}$ 一档。
- 采用轻载和重载2个弹簧组合，斜楔弹簧的最终压力约是KACC的2倍。

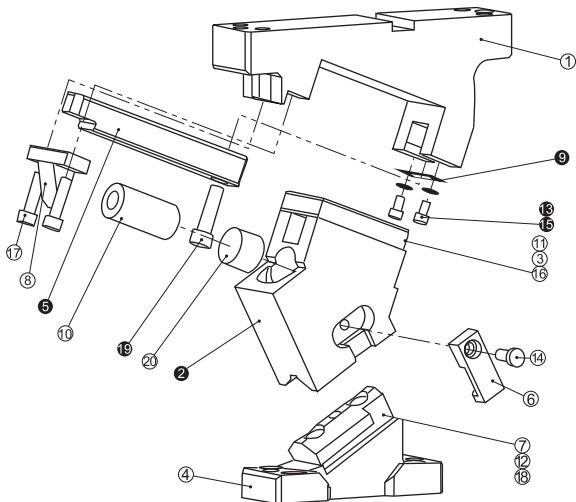


### ■ 滑块结构及强制拉回结构



- 所有斜楔侧面导向间隙 $0.07\text{mm}$ 以内，使得调整更加容易。KACC150采用了侧面间隙 $0.01 \sim 0.03$ 高精度精确导向。
- 所有刚性返回器间隙 $0.01 \sim 0.03$ 。
- 此类斜楔为JIS系列标准的轻载标准斜楔，非常适合用作斜楔冲孔模具。
- 应用此类斜楔前，请仔细阅读斜楔允许加工力及最大加工力，以确认适合使用。

### ■ KACC50的拆卸和组装



#### ● KACC50拆卸方法

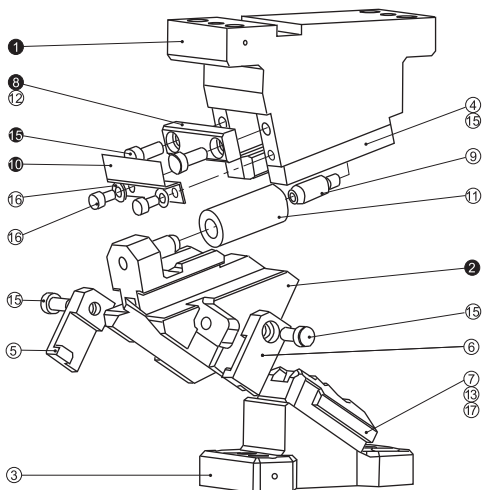
- 1、卸下内六角螺钉⑮，取出安全盖板⑨
- 2、卸下内六角螺钉⑯
- 3、将导杆⑤从后方取出，这样就可以取下来滑块②。

#### ● KACC50组装方法

组装按照分解的逆过程进行。

- ◆相关滑动部分需要仔细检查，安装之前请涂抹润滑油。
- ◆因为斜楔滑块和斜楔底板有装配要求，所以先确认零件件号后再组装。
- ◆分解、组装后，要充分注意不要忘记紧固所有相关螺钉。

### ■ KACC65的拆卸和组装



#### ● KACC65拆卸方法

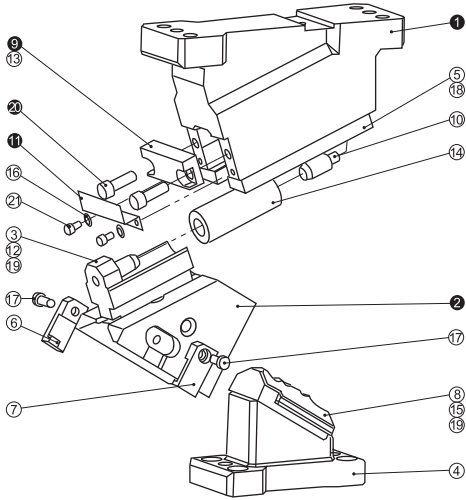
- 1、卸下内六角螺钉⑩，取出安全盖板；
- 2、卸下内六角螺钉⑮，卸下行程挡块⑧；
- 3、从斜楔底板①后方取出斜楔滑块②。

#### ● KACC65组装方法

组装按照分解的逆过程进行。

- ◆相关滑动部分需要仔细检查，安装之前请涂抹润滑油。
- ◆因为斜楔滑块和斜楔底板有装配要求，所以先确认零件件号后再组装。
- ◆分解、组装后，要充分注意不要忘记紧固所有相关螺钉。

### ■ KACC80的拆卸和组装



#### ● KACC80拆卸方法

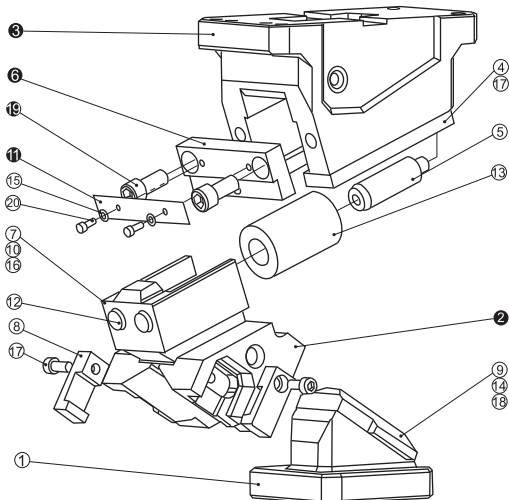
- 1、卸下内六角螺钉①，取出安全盖板；
- 2、卸下内六角螺钉②，卸下行程挡板③；
- 3、从斜楔底板①后方取出斜楔滑块②。

#### ● KACC80组装方法

组装按照分解的逆过程进行。

- ◆相关滑动部分需要仔细检查，安装之前请涂抹润滑油。
- ◆因为斜楔滑块和斜楔底板有装配要求，所以先确认零件件号后再组装。
- ◆分解、组装后，要充分注意不要忘记紧固所有相关螺钉。

### ■ KACC150的拆卸和组装



#### ● KACC150拆卸方法

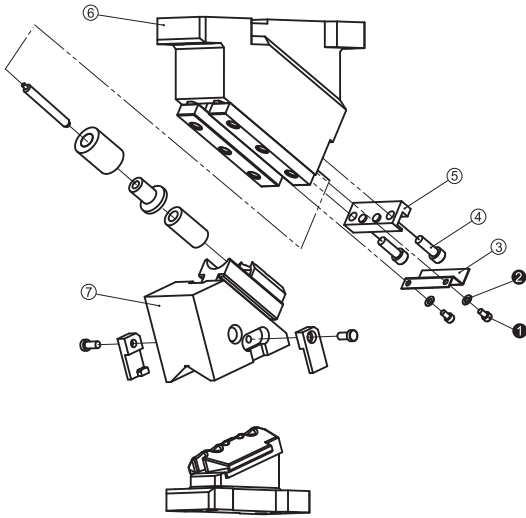
- 1、卸下内六角螺钉①取出安全盖板；
- 2、卸下内六角螺钉②，卸下行程挡板③；
- 3、从斜楔底板④后方取出斜楔滑块②。

#### ● KACC150组装方法

组装按照分解的逆过程进行。

- ◆相关滑动部分需要仔细检查，安装之前请涂抹润滑油。
- ◆因为斜楔滑块和斜楔底板有装配要求，所以先确认零件件号后再组装。
- ◆分解、组装后，要充分注意不要忘记紧固所有相关螺钉。

### ■ KACF80的拆卸和组装



#### ● KACF80拆卸方法

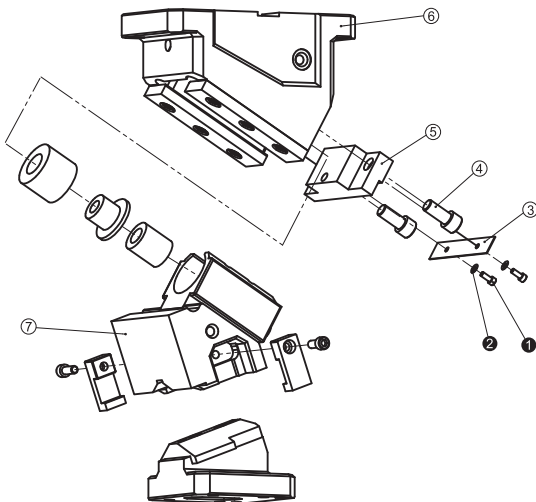
- 1、卸下内六角螺钉①②,取出安全盖板;
- 2、卸下内六角螺钉④,卸下行程挡板⑤;
- 3、从斜楔底板⑥后方取出斜楔滑块⑦。

#### ● KACF80组装方法

组装按照分解的逆过程进行。

- ◆ 相关滑动部分需要仔细检查,安装之前请涂抹润滑油。
- ◆ 因为斜楔滑块和斜楔底板有装配要求,所以先确认零件号后再组装。
- ◆ 分解、组装后,要充分注意不要忘记紧固所有相关螺钉。

### ■ KACF150的拆卸和组装



#### ● KACF150拆卸方法

- 1、卸下内六角螺钉①②,取出安全盖板;
- 2、卸下内六角螺钉④,卸下行程挡板⑤;
- 3、从斜楔底板⑥后方取出斜楔滑块⑦。

#### ● KACF150组装方法

组装按照分解的逆过程进行。

- ◆ 相关滑动部分需要仔细检查,安装之前请涂抹润滑油。
- ◆ 因为斜楔滑块和斜楔底板有装配要求,所以先确认零件号后再组装。
- ◆ 分解、组装后,要充分注意不要忘记紧固所有相关螺钉。



# KACC50-00

### ■ 零部件表 Table of Components

代号 No.	名称 Description	数量 Qty	材料和备注 Material and Remark
①	底座 Cam Holder	1	QT450
②	滑动块 Cam Slider	1	QT450
③	耐磨板 Wear Plate	1	铜合金 Bronze
④	驱动块 Cam Driver	1	QT450
⑤	导轨 Guide Bar	1	45
⑥	强制拉回 Positive Return Follower	1	45
⑦	凸V型 Cam Slide Guide	1	铜合金 Bronze
⑧	弹簧挡板 Spring Block	1	45
⑩	螺旋弹簧 Coil Spring	1	TL27-125
⑪	缓冲块 Stopper	2	φ10×10
⑫	内螺纹圆柱销 Dowel Pin With Female Thread	3	φ8×30
⑭	内六角螺钉 Hexagon Socket Head Bolt	1	LCS-8-18
⑯	内六角螺钉 Hexagon Socket Head Bolt	4	M8×20
⑰	内六角螺钉 Hexagon Socket Head Bolt	2	M8×30
⑱	内六角螺钉 Hexagon Socket Head Bolt	2	M10×30
⑲	内六角螺钉 Hexagon Socket Head Bolt	1	M10×35

行程 Travel S	加工力 Working Force kN(tonf)		弹簧力 Spring Force N(kgf)		总重量 Total Weight kg	代号 Catalog No.	(W)	(θ)	SANKYO 代号对照 Catalog No.
	标准加工力 (100万回) Standard Working Force (one million strokes)	允许加工力 (30万回) Allowable Working Force (300,000 strokes)	初压 Initial Load	终压 Final Load					
30.2	19.6 (2.0)	39.2 (4.0)	58.8 (6.0)	980 (100.0)	12.7	KACC	50	00	UCMSC

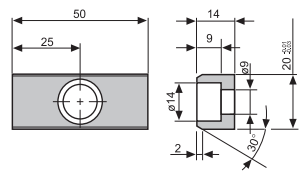
Order **Catalog No.** (W) - (θ)  
**KACC 50 - 00**

Option

追加编号 Option Code	明细 Specification
SC	安装面可以加长10到60mm(指定10mm单位) The mount surface is extended forward in the range of 10 to 60 mm(at increments of 10mm).
WC	安装面宽度加至65 The mount width is changed to 65.
N12	驱动块底座销孔改为φ12 Dowel pin holes of cam holder and cam driver are changed to φ12.

Order **KACC50-00-SC30-WC**  
**KACC50-00-WC**

### ■ 键详图 Key Specification





# KACC50-10

**■ 零部件表**  
Table of Components

代号 No.	名称 Description	数量 Qty	材料和备注 Material and Remark
①	底座 Cam Holder	1	QT450
②	滑动块 Cam Slider	1	QT450
③	耐磨板 Wear Plate	1	铜合金 Bronze
④	驱动块 Cam Driver	1	QT450
⑤	导轨 Guide Bar	1	45
⑥	强制拉回 Positive Return Follower	1	45
⑦	凸V型 Cam Slide Guide	1	铜合金 Bronze
⑧	弹簧挡板 Spring Block	1	45
⑩	螺旋弹簧 Coil Spring	1	TL27-125
⑪	缓冲块 Stopper	2	φ10×10
⑫	内螺纹圆柱销 Dowel Pin With Female Thread	3	φ8×30
⑭	内六角螺钉 Hexagon Socket Head Bolt	1	LCS-8-18
⑯	内六角螺钉 Hexagon Socket Head Bolt	4	M8×20
⑰	内六角螺钉 Hexagon Socket Head Bolt	2	M8×30
⑱	内六角螺钉 Hexagon Socket Head Bolt	2	M10×30
⑲	内六角螺钉 Hexagon Socket Head Bolt	1	M10×35

**■ SC and WC Option**

行程 Travel S	加工力 Working Force kN(tonf)		弹簧力 Spring Force N(kgf)		总重量 Total Weight kg	代号 Catalog No.	(W)	(θ)	SANKYO 代号对照 Catalog No.
	标准加工力 (100万回) Standard Working Force (one million strokes)	允许加工力 (30万回) Allowable Working Force (300,000 strokes)	初压 Initial Load	终压 Final Load					
30.3	19.6 (2.0)	39.2 (4.0)	215.6 (22.0)	980.0 (100.0)	11.8	KACC	50	10	UCMSC

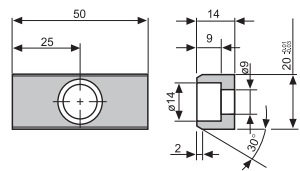
Order **Catalog No.** (W) - (θ)  
**KACC 50 - 10**

Option

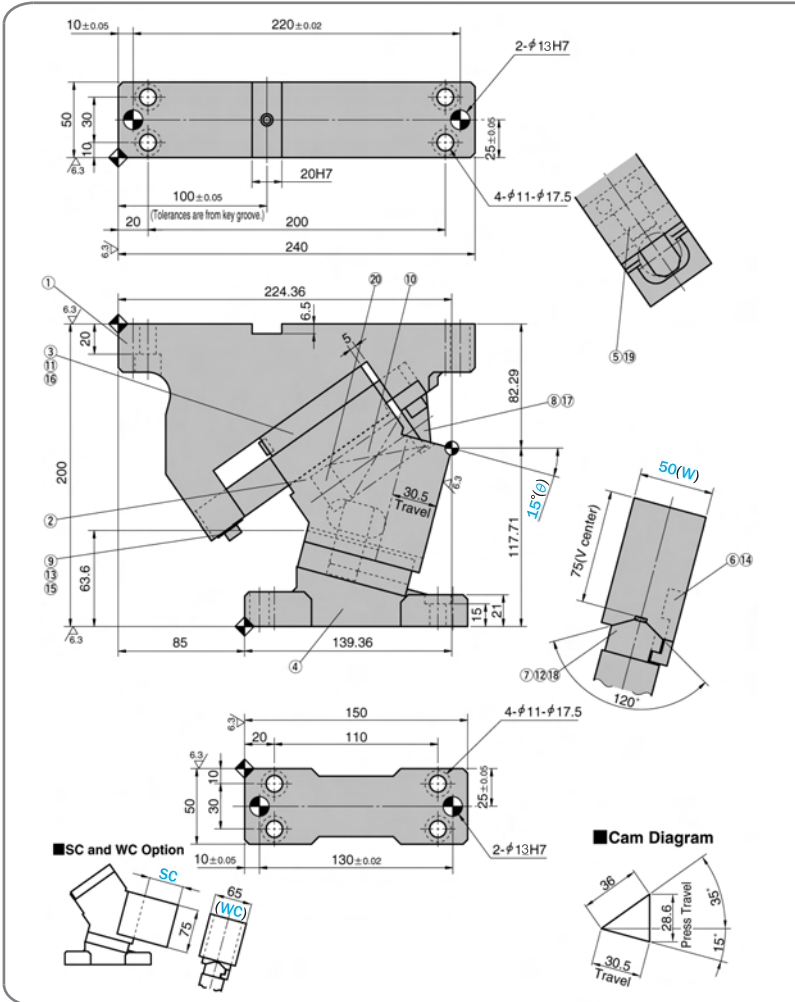
追加编号 Option Code	明细 Specification
SC	安装面可以加长10到60mm(指定10mm单位) The mount surface is extended forward in the range of 10 to 60 mm(at increments of 10mm).
WC	安装面宽度加至65 The mount width is changed to 65.
N12	驱动块底座销孔改为φ12 Dowel pin holes of cam holder and cam driver are changed to φ12.

Order **KACC50-10-SC30-WC**  
**KACC50-10-WC**

**■ 键详图 Key Specification**



# KACC50-15



■ 零部件表  
Table of Components

代号 No.	名称 Description	数量 Qty	材料和备注 Material and Remark
①	底座 Cam Holder	1	QT450
②	滑动块 Cam Slider	1	QT450
③	耐磨板 Wear Plate	1	铜合金 Bronze
④	驱动块 Cam Driver	1	QT450
⑤	导轨 Guide Bar	1	45
⑥	强制拉回 Positive Return Follower	1	45
⑦	凸V型 Cam Slide Guide	1	铜合金 Bronze
⑧	弹簧挡板 Spring Block	1	45
⑩	螺旋弹簧 Coil Spring	1	TL27-100
⑪	缓冲块 Stopper	2	φ10×10
⑫	内螺纹圆柱销 Dowel Pin With Female Thread	3	φ8×30
⑭	内六角螺钉 Hexagon Socket Head Bolt	1	LCS-8-18
⑯	内六角螺钉 Hexagon Socket Head Bolt	4	M8×20
⑰	内六角螺钉 Hexagon Socket Head Bolt	2	M8×30
⑱	内六角螺钉 Hexagon Socket Head Bolt	2	M10×30
⑲	内六角螺钉 Hexagon Socket Head Bolt	1	M10×35

行程 Travel S	加工力 Working Force kN(tonf)		弹簧力 Spring Force N(kgf)		总重量 Total Weight kg	代号 Catalog No.	(W)	(θ)	SANKYO 代号对照 Catalog No.
	标准加工力 (100万回) Standard Working Force (one million strokes)	允许加工力 (30万回) Allowable Working Force (300,000 strokes)	初压 Initial Load	终压 Final Load					
30.5	19.6 (2.0)	39.2 (4.0)	98.0 (10.0)	980.0 (100.0)	11.8	KACC	50	15	UCMSC



Order

Catalog No. (W) - (θ)  
**KACC 50 - 15**



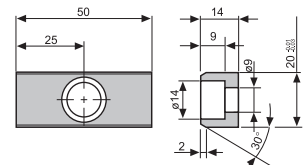
Option

追加编号 Option Code	明细 Specification
SC	安装面可以加长10到60mm(指定10mm单位) The mount surface is extended forward in the range of 10 to 60 mm(at increments of 10mm).
WC	安装面宽度加至65 The mount width is changed to 65.
N12	驱动块底座销孔改为φ12 Dowel pin holes of cam holder and cam driver are changed to φ12.



Order **KACC50-15-SC30-WC**  
**KACC50-15-WC**

■ 键详图 Key Specification



KACC 50

# KACC50-20

### ■ 零部件表 Table of Components

代号 No.	名称 Description	数量 Qty	材料和备注 Material and Remark
①	底座 Cam Holder	1	QT450
②	滑动块 Cam Slider	1	QT450
③	耐磨板 Wear Plate	1	铜合金 Bronze
④	驱动块 Cam Driver	1	QT450
⑤	导轨 Guide Bar	1	45
⑥	强制拉回 Positive Return Follower	1	45
⑦	凸V型 Cam Slide Guide	1	铜合金 Bronze
⑧	弹簧挡板 Spring Block	1	45
⑩	螺旋弹簧 Coil Spring	1	TL27-100
⑪	缓冲块 Stopper	2	φ10×10
⑫	内螺纹圆柱销 Dowel Pin With Female Thread	3	φ8×30
⑭	内六角螺钉 Hexagon Socket Head Bolt	1	LCS-8-18
⑯	内六角螺钉 Hexagon Socket Head Bolt	4	M8×20
⑰	内六角螺钉 Hexagon Socket Head Bolt	2	M8×30
⑱	内六角螺钉 Hexagon Socket Head Bolt	2	M10×30
⑲	内六角螺钉 Hexagon Socket Head Bolt	1	M10×35

行程 Travel S	加工力 Working Force kN(tonf)		弹簧力 Spring Force N(kgf)		总重量 Total Weight kg	代号 Catalog No.	(W)	(θ)	SANKYO 代号对照 Catalog No.
	标准加工力 (100万回) Standard Working Force (one million strokes)	允许加工力 (30万回) Allowable Working Force (300,000 strokes)	初压 Initial Load	终压 Final Load					
30.4	19.6 (2.0)	39.2 (4.0)	171.5 (17.5)	980.0 (100.0)	11.5	KACC	50	20	UCMSC



Order

Catalog No. (W) - (θ)  
**KACC 50 - 20**



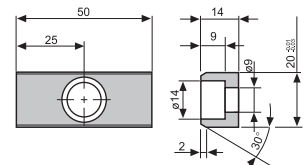
Option

追加编号 Option Code	明细 Specification
SC	安装面可以加长10到60mm(指定10mm单位) The mount surface is extended forward in the range of 10 to 60 mm(at increments of 10mm).
WC	安装面宽度加至65 The mount width is changed to 65.
N12	驱动块底座销孔改为φ12 Dowel pin holes of cam holder and cam driver are changed to φ12.



Order **KACC50-20-SC30-WC**  
**KACC50-20-WC**

### ■ 键详图 Key Specification





# KACC50-25

### ■ 零部件表

Table of Components

代号 No.	名称 Description	数量 Qty	材料和备注 Material and Remark
①	底座 Cam Holder	1	QT450
②	滑动块 Cam Slider	1	QT450
③	耐磨板 Wear Plate	1	铜合金 Bronze
④	驱动块 Cam Driver	1	QT450
⑤	导轨 Guide Bar	1	45
⑥	强制拉回 Positive Return Follower	1	45
⑦	凸V型 Cam Slide Guide	1	铜合金 Bronze
⑧	弹簧挡板 Spring Block	1	45
⑩	螺旋弹簧 Coil Spring	1	TL27-90
⑪	缓冲块 Stopper	2	φ10×10
⑫	内螺纹圆柱销 Dowel Pin With Female Thread	3	φ8×30
⑭	内六角螺钉 Hexagon Socket Head Bolt	1	LCS-8-18
⑯	内六角螺钉 Hexagon Socket Head Bolt	4	M8×20
⑰	内六角螺钉 Hexagon Socket Head Bolt	2	M8×30
⑱	内六角螺钉 Hexagon Socket Head Bolt	2	M10×30
⑲	内六角螺钉 Hexagon Socket Head Bolt	1	M10×35

行程 Travel S	加工力 Working Force kN(tonf)		弹簧力 Spring Force N(kgf)		总重量 Total Weight kg	代号 Catalog No.	(W)	(θ)	SANKYO 代号对照 Catalog No.
	标准加工力 (100万回) Standard Working Force (one million strokes)	允许加工力 (30万回) Allowable Working Force (300,000 strokes)	初压 Initial Load	终压 Final Load					
30.0	19.6 (2.0)	39.2 (4.0)	163.8 (16.7)	982.8 (100.1)	11.3	KACC	50	25	UCMSC



Order

Catalog No. (W) - (θ)  
**KACC 50 - 25**



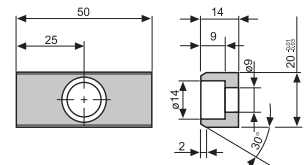
Option

追加编号 Option Code	明细 Specification
SC	安装面可以加长10到60mm(指定10mm单位) The mount surface is extended forward in the range of 10 to 60 mm(at increments of 10mm).
WC	安装面宽度加至65 The mount width is changed to 65.
N12	驱动块底座销孔改为φ12 Dowel pin holes of cam holder and cam driver are changed to φ12.



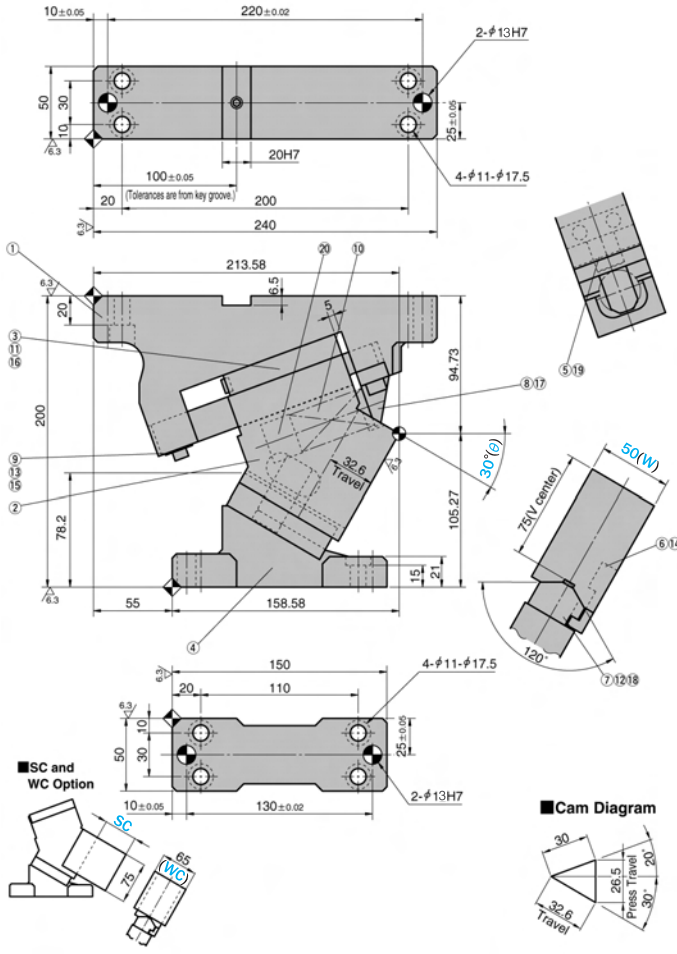
Order **KACC50-25-SC30-WC**  
**KACC50-25-WC**

### ■ 键详图 Key Specification



KACC 50

# KACC50-30



## ■ 零部件表 Table of Components

代号 No.	名称 Description	数量 Qty	材料和备注 Material and Remark
①	底座 Cam Holder	1	QT450
②	滑动块 Cam Slider	1	QT450
③	耐磨板 Wear Plate	1	铜合金 Bronze
④	驱动块 Cam Driver	1	QT450
⑤	导轨 Guide Bar	1	45
⑥	强制拉回 Positive Return Follower	1	45
⑦	凸V型 Cam Slide Guide	1	铜合金 Bronze
⑧	弹簧挡板 Spring Block	1	45
⑩	螺旋弹簧 Coil Spring	1	TL27-90
⑪	缓冲块 Stopper	2	φ10×10
⑫	内螺纹圆柱销 Dowel Pin With Female Thread	3	φ8×30
⑭	内六角螺钉 Hexagon Socket Head Bolt	1	LCS-8-18
⑯	内六角螺钉 Hexagon Socket Head Bolt	4	M8×20
⑰	内六角螺钉 Hexagon Socket Head Bolt	2	M8×30
⑱	内六角螺钉 Hexagon Socket Head Bolt	2	M10×30
⑲	内六角螺钉 Hexagon Socket Head Bolt	1	M10×35

行程 Travel S	加工力 Working Force kN(tonf)		弹簧力 Spring Force N(kgf)		总重量 Total Weight kg	代号 Catalog No.	(W)	(θ)	SANKYO 代号对照 Catalog No.
	标准加工力 (100万回) Standard Working Force (one million strokes)	允许加工力 (30万回) Allowable Working Force (300,000 strokes)	初压 Initial Load	终压 Final Load					
32.6	19.6 (2.0)	39.2 (4.0)	163.8 (16.7)	982.8 (100.1)	11.1	KACC	50	30	UCMSC



Order

Catalog No. (W) - (θ)  
**KACC 50 - 30**



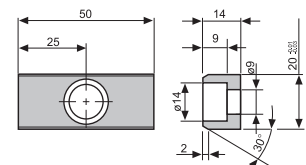
Option

追加编号 Option Code	明细 Specification
SC	安装面可以加长10到60mm(指定10mm单位) The mount surface is extended forward in the range of 10 to 60 mm(at increments of 10mm).
WC	安装面宽度加至65 The mount width is changed to 65.
N12	驱动块底座销孔改为φ12 Dowel pin holes of cam holder and cam driver are changed to φ12.

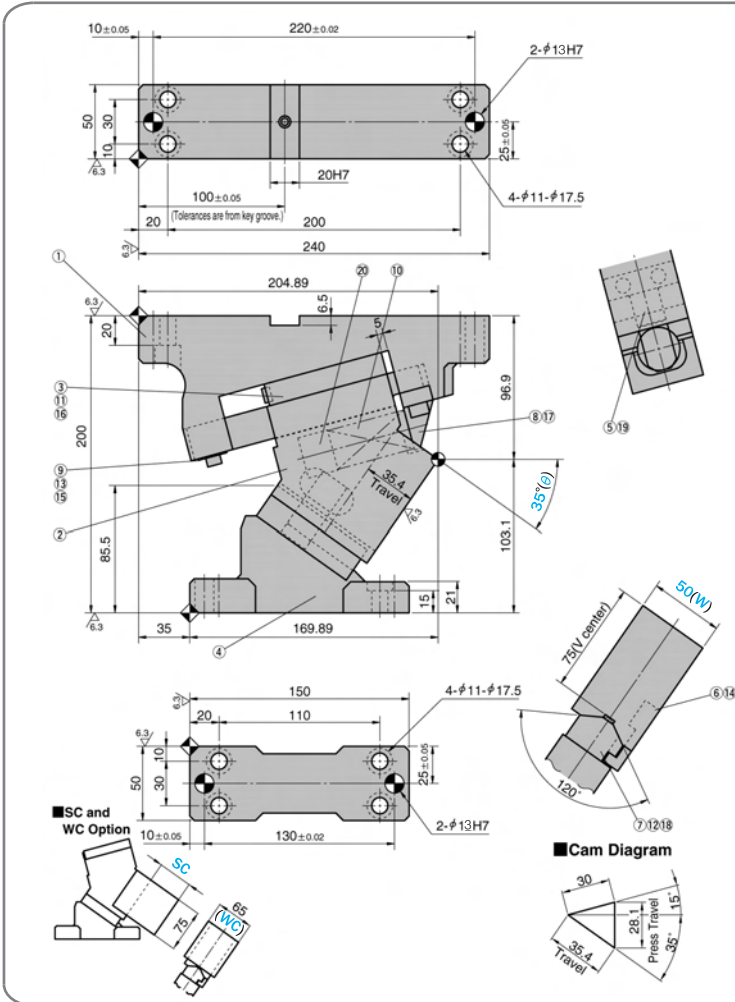


Order **KACC50-30-SC30-WC**  
**KACC50-30-WC**

## ■ 键详图 Key Specification



# KACC50-35



## ■ 零部件表 Table of Components

代号 No.	名称 Description	数量 Qty	材料和备注 Material and Remark
①	底座 Cam Holder	1	QT450
②	滑动块 Cam Slider	1	QT450
③	耐磨板 Wear Plate	1	铜合金 Bronze
④	驱动块 Cam Driver	1	QT450
⑤	导轨 Guide Bar	1	45
⑥	强制拉回 Positive Return Follower	1	45
⑦	凸V型 Cam Slide Guide	1	铜合金 Bronze
⑧	弹簧挡板 Spring Block	1	45
⑩	螺旋弹簧 Coil Spring	1	TL27-90
⑪	缓冲块 Stopper	2	φ10×10
⑫	内螺纹圆柱销 Dowel Pin With Female Thread	3	φ8×30
⑭	内六角螺钉 Hexagon Socket Head Bolt	1	LCS-8-18
⑯	内六角螺钉 Hexagon Socket Head Bolt	4	M8×20
⑰	内六角螺钉 Hexagon Socket Head Bolt	2	M8×30
⑱	内六角螺钉 Hexagon Socket Head Bolt	2	M10×30
⑲	内六角螺钉 Hexagon Socket Head Bolt	1	M10×35

行程 Travel S	加工力 Working Force kN(tonf)		弹簧力 Spring Force N(kgf)		总重量 Total Weight kg	代号 Catalog No.	(W)	(θ)	SANKYO 代号对照 Catalog No.
	标准加工力 (100万回) Standard Working Force (one million strokes)	允许加工力 (30万回) Allowable Working Force (300,000 strokes)	初压 Initial Load	终压 Final Load					
35.4	19.6 (2.0)	39.2 (4.0)	163.8 (16.7)	982.8 (100.1)	10.9	KACC	50	35	UCMSC



Order

Catalog No. (W) - (θ)  
**KACC 50 - 35**



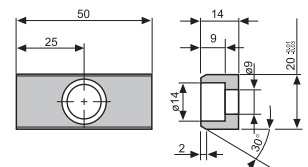
Option

追加编号 Option Code	明细 Specification
SC	安装面可以加长10到60mm(指定10mm单位) The mount surface is extended forward in the range of 10 to 60 mm(at increments of 10mm).
WC	安装面宽度加至65 The mount width is changed to 65.
N12	驱动块底座销孔改为φ12 Dowel pin holes of cam holder and cam driver are changed to φ12.



Order **KACC50-35-SC30-WC**  
**KACC50-35-WC**

## ■ 键详图 Key Specification



KACC 50



# KACC50-40

### ■ 零部件表

#### Table of Components

代号 No.	名称 Description	数量 Qty	材料和备注 Material and Remark
①	底座 Cam Holder	1	QT450
②	滑动块 Cam Slider	1	QT450
③	耐磨板 Wear Plate	1	铜合金 Bronze
④	驱动块 Cam Driver	1	QT450
⑤	导轨 Guide Bar	1	45
⑥	强制拉回 Positive Return Follower	1	45
⑦	凸V型 Cam Slide Guide	1	铜合金 Bronze
⑧	弹簧挡板 Spring Block	1	45
⑩	螺旋弹簧 Coil Spring	1	TL27-90
⑪	缓冲块 Stopper	2	φ10×10
⑫	内螺纹圆柱销 Dowel Pin With Female Thread	3	φ8×30
⑭	内六角螺钉 Hexagon Socket Head Bolt	1	LCS-8-18
⑯	内六角螺钉 Hexagon Socket Head Bolt	4	M8×20
⑰	内六角螺钉 Hexagon Socket Head Bolt	2	M8×30
⑱	内六角螺钉 Hexagon Socket Head Bolt	2	M10×30
⑲	内六角螺钉 Hexagon Socket Head Bolt	1	M10×35

行程 Travel S	加工力 Working Force kN(tonf)		弹簧力 Spring Force N(kgf)		总重量 Total Weight kg	代号 Catalog No.	(W)	(θ)	SANKYO 代号对照 Catalog No.
	标准加工力 (100万回) Standard Working Force (one million strokes)	允许加工力 (30万回) Allowable Working Force (300,000 strokes)	初压 Initial Load	终压 Final Load					
38.6	19.6 (2.0)	39.2 (4.0)	163.8 (16.7)	982.8 (100.1)	10.9	KACC	50	40	UCMSC



Order

Catalog No. (W) - (θ)  
**KACC 50 - 40**



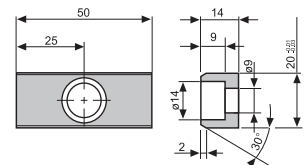
Option

追加编号 Option Code	明细 Specification
SC	安装面可以加长10到60mm(指定10mm单位) The mount surface is extended forward in the range of 10 to 60 mm(at increments of 10mm).
WC	安装面宽度加至65 The mount width is changed to 65 .
N12	驱动块底座销孔改为φ12 Dowel pin holes of cam holder and cam driver are changed to φ12.



Order **KACC50-40-SC30-WC**  
**KACC50-40-WC**

### ■ 键详图 Key Specification



# KACC50-45

### ■ 零部件表

#### Table of Components

代号 No.	名称 Description	数量 Qty	材料和备注 Material and Remark
①	底座 Cam Holder	1	QT450
②	滑动块 Cam Slider	1	QT450
③	耐磨板 Wear Plate	1	铜合金 Bronze
④	驱动块 Cam Driver	1	QT450
⑤	导轨 Guide Bar	1	45
⑥	强制拉回 Positive Return Follower	1	45
⑦	凸V型 Cam Slide Guide	1	铜合金 Bronze
⑧	弹簧挡板 Spring Block	1	45
⑩	螺旋弹簧 Coil Spring	1	TL27-90
⑪	缓冲块 Stopper	2	φ10×10
⑫	内螺纹圆柱销 Dowel Pin With Female Thread	3	φ8×30
⑭	内六角螺钉 Hexagon Socket Head Bolt	1	LCS-8-18
⑯	内六角螺钉 Hexagon Socket Head Bolt	4	M8×20
⑰	内六角螺钉 Hexagon Socket Head Bolt	2	M8×30
⑱	内六角螺钉 Hexagon Socket Head Bolt	2	M10×30
⑲	内六角螺钉 Hexagon Socket Head Bolt	1	M10×35

行程 Travel S	加工力 Working Force kN(tonf)		弹簧力 Spring Force N(kgf)		总重量 Total Weight kg	代号 Catalog No.	(W)	(θ)	SANKYO 代号对照 Catalog No.
	标准加工力 (100万回) Standard Working Force (one million strokes)	允许加工力 (30万回) Allowable Working Force (300,000 strokes)	初压 Initial Load	终压 Final Load					
42.3	19.6 (2.0)	39.2 (4.0)	163.8 (16.7)	982.8 (100.1)	10.6	KACC	50	45	UCMSC

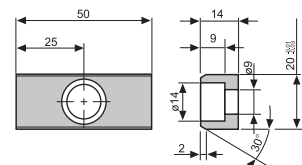
Order **Catalog No.** (W) - (θ)  
**KACC 50 - 45**

Option

追加编号 Option Code	明细 Specification
SC	安装面可以加长10到60mm(指定10mm单位) The mount surface is extended forward in the range of 10 to 60 mm(at increments of 10mm).
WC	安装面宽度加至65 The mount width is changed to 65.
N12	驱动块底座销孔改为φ12 Dowel pin holes of cam holder and cam driver are changed to φ12.

Order **KACC50-45-SC30-WC**  
**KACC50-45-WC**

### ■ 键详图 Key Specification



KACC  
50

# KACC50-50

### ■ 零部件表

#### Table of Components

代号 No.	名称 Description	数量 Qty	材料和备注 Material and Remark
①	底座 Cam Holder	1	QT450
②	滑动块 Cam Slider	1	QT450
③	耐磨板 Wear Plate	1	铜合金 Bronze
④	驱动块 Cam Driver	1	QT450
⑤	导轨 Guide Bar	1	45
⑥	强制拉回 Positive Return Follower	1	45
⑦	凸V型 Cam Slide Guide	1	铜合金 Bronze
⑧	弹簧挡板 Spring Block	1	45
⑩	螺旋弹簧 Coil Spring	1	TL27-90
⑪	缓冲块 Stopper	2	φ10×10
⑫	内螺纹圆柱销 Dowel Pin With Female Thread	3	φ8×30
⑭	内六角螺钉 Hexagon Socket Head Bolt	1	LCS-8-18
⑯	内六角螺钉 Hexagon Socket Head Bolt	4	M8×20
⑰	内六角螺钉 Hexagon Socket Head Bolt	2	M8×30
⑱	内六角螺钉 Hexagon Socket Head Bolt	2	M10×30
⑲	内六角螺钉 Hexagon Socket Head Bolt	1	M10×35

行程 Travel S	加工力 Working Force kN(tonf)		弹簧力 Spring Force N(kgf)		总重量 Total Weight Kg	代号 Catalog No.	(W)	(θ)	SANKYO 代号对照 Catalog No.
	标准加工力 (100万回) Standard Working Force (one million strokes)	允许加工力 (30万回) Allowable Working Force (300,000 strokes)	初压 Initial Load	终压 Final Load					
46.7	19.6 (2.0)	39.2 (4.0)	163.8 (16.7)	982.8 (100.1)	10.6	KACC	50	50	UCMSC



Order

Catalog No. (W) - (θ)  
**KACC 50 - 50**



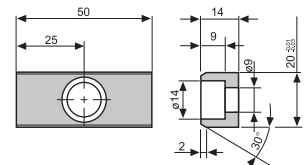
Option

追加编号 Option Code	明细 Specification
SC	安装面可以加长10到60mm(指定10mm单位) The mount surface is extended forward in the range of 10 to 60 mm(at increments of 10mm).
WC	安装面宽度加至65 The mount width is changed to 65.
N12	驱动块底座销孔改为φ12 Dowel pin holes of cam holder and cam driver are changed to φ12.



Order **KACC50-50-SC30-WC**  
**KACC50-50-WC**

### ■ 键详图 Key Specification



# KACC50-55

### ■ 零部件表 Table of Components

代号 No.	名称 Description	数量 Qty	材料和备注 Material and Remark
①	底座 Cam Holder	1	QT450
②	滑动块 Cam Slider	1	QT450
③	耐磨板 Wear Plate	1	铜合金 Bronze
④	驱动块 Cam Driver	1	QT450
⑤	导轨 Guide Bar	1	45
⑥	强制拉回 Positive Return Follower	1	45
⑦	凸V型 Cam Slide Guide	1	铜合金 Bronze
⑧	弹簧挡板 Spring Block	1	45
⑩	螺旋弹簧 Coil Spring	1	TL27-90
⑪	缓冲块 Stopper	2	φ10×10
⑫	内螺纹圆柱销 Dowel Pin With Female Thread	3	φ8×30
⑭	内六角螺钉 Hexagon Socket Head Bolt	1	LCS-8-18
⑯	内六角螺钉 Hexagon Socket Head Bolt	4	M8×20
⑰	内六角螺钉 Hexagon Socket Head Bolt	2	M8×30
⑱	内六角螺钉 Hexagon Socket Head Bolt	2	M10×30
⑲	内六角螺钉 Hexagon Socket Head Bolt	1	M10×35

行程 Travel S	加工力 Working Force kN(tonf)		弹簧力 Spring Force N(kgf)		总重量 Total Weight kg	代号 Catalog No.	(W)	(θ)	SANKYO 代号对照 Catalog No.
	标准加工力 (100万回) Standard Working Force (one million strokes)	允许加工力 (30万回) Allowable Working Force (300,000 strokes)	初压 Initial Load	终压 Final Load					
52.1	19.6 (2.0)	39.2 (4.0)	163.8 (16.7)	982.8 (100.1)	10.8	KACC	50	55	UCMSC



Order

Catalog No. (W) - (θ)  
**KACC 50 - 55**



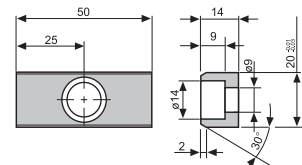
Option

追加编号 Option Code	明细 Specification
SC	安装面可以加长10到60mm(指定10mm单位) The mount surface is extended forward in the range of 10 to 60 mm(at increments of 10mm).
WC	安装面宽度加至65 The mount width is changed to 65.
N12	驱动块底座销孔改为φ12 Dowel pin holes of cam holder and cam driver are changed to φ12.



Order **KACC50-55-SC30-WC**  
**KACC50-55-WC**

### ■ 键详图 Key Specification



KACC  
50

# KACC50-60

**■ 零部件表**  
Table of Components

代号 No.	名称 Description	数量 Qty	材料和备注 Material and Remark
①	底座 Cam Holder	1	QT450
②	滑动块 Cam Slider	1	QT450
③	耐磨板 Wear Plate	1	铜合金 Bronze
④	驱动块 Cam Driver	1	QT450
⑤	导轨 Guide Bar	1	45
⑥	强制拉回 Positive Return Follower	1	45
⑦	凸V型 Cam Slide Guide	1	铜合金 Bronze
⑧	弹簧挡板 Spring Block	1	45
⑩	螺旋弹簧 Coil Spring	1	TL27-90
⑪	缓冲块 Stopper	2	∅10×10
⑫	内螺纹圆柱销 Dowel Pin With Female Thread	3	∅8×30
⑭	内六角螺钉 Hexagon Socket Head Bolt	1	LCS-8-18
⑯	内六角螺钉 Hexagon Socket Head Bolt	4	M8×20
⑰	内六角螺钉 Hexagon Socket Head Bolt	2	M8×30
⑱	内六角螺钉 Hexagon Socket Head Bolt	2	M10×30
⑲	内六角螺钉 Hexagon Socket Head Bolt	1	M10×35

行程 Travel S	加工力 Working Force kN(tonf)		弹簧力 Spring Force N(kgf)		总重量 Total Weight kg	代号 Catalog No.	(W)	(θ)	SANKYO 代号对照 Catalog No.
	标准加工力 (100万回) Standard Working Force (one million strokes)	允许加工力 (30万回) Allowable Working Force (300,000 strokes)	初压 Initial Load	终压 Final Load					
59.1	19.6 (2.0)	39.2 (4.0)	163.8 (16.7)	982.8 (100.1)	11.2	KACC	50	60	UCMSC



Order

Catalog No. **KACC** (W) **50** - (θ) **60**



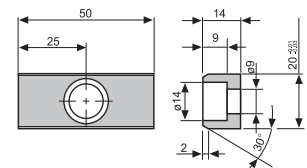
Option

追加编号 Option Code	明细 Specification
SC	安装面可以加长10到60mm(指定10mm单位) The mount surface is extended forward in the range of 10 to 60 mm(at increments of 10mm).
WC	安装面宽度加至65 The mount width is changed to 65.
N12	驱动块底座销孔改为∅12 Dowel pin holes of cam holder and cam driver are changed to ∅12.



Order **KACC50-60-SC30-WC**  
**KACC50-60-WC**

## ■ 键详图 Key Specification





# KACC50-65

### ■ 零部件表 Table of Components

代号 No.	名称 Description	数量 Qty	材料和备注 Material and Remark
①	底座 Cam Holder	1	QT450
②	滑动块 Cam Slider	1	QT450
③	耐磨板 Wear Plate	1	铜合金 Bronze
④	驱动块 Cam Driver	1	QT450
⑤	导轨 Guide Bar	1	45
⑥	强制拉回 Positive Return Follower	1	45
⑦	凸V型 Cam Slide Guide	1	铜合金 Bronze
⑧	弹簧挡板 Spring Block	1	45
⑩	螺旋弹簧 Coil Spring	1	TL27-90
⑪	缓冲块 Stopper	2	φ10×10
⑫	内螺纹圆柱销 Dowel Pin With Female Thread	3	φ8×30
⑭	内六角螺钉 Hexagon Socket Head Bolt	1	LCS-8-18
⑯	内六角螺钉 Hexagon Socket Head Bolt	4	M8×20
⑰	内六角螺钉 Hexagon Socket Head Bolt	2	M8×30
⑱	内六角螺钉 Hexagon Socket Head Bolt	2	M10×30
⑲	内六角螺钉 Hexagon Socket Head Bolt	1	M10×35

行程 Travel S	加工力 Working Force kN(tonf)		弹簧力 Spring Force N(kgf)		总重量 Total Weight kg	代号 Catalog No.	(W)	(θ)	SANKYO 代号对照 Catalog No.
	标准加工力 (100万回) Standard Working Force (one million strokes)	允许加工力 (30万回) Allowable Working Force (300,000 strokes)	初压 Initial Load	终压 Final Load					
58.3	19.6 (2.0)	39.2 (4.0)	163.8 (16.7)	982.8 (100.1)	11.6	KACC	50	65	UCMSC



Order

Catalog No. (W) - (θ)  
**KACC 50 - 65**



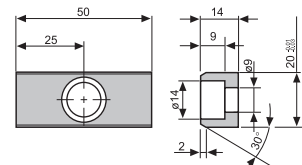
Option

追加编号 Option Code	明细 Specification
SC	安装面可以加长10到60mm(指定10mm单位) The mount surface is extended forward in the range of 10 to 60 mm(at increments of 10mm).
WC	安装面宽度加至65 The mount width is changed to 65.
N12	驱动块底座销孔改为φ12 Dowel pin holes of cam holder and cam driver are changed to φ12.



Order **KACC50-65-SC30-WC**  
**KACC50-65-WC**

### ■ 键详图 Key Specification



KACC 50

# KACC50-70

### ■ 零部件表

#### Table of Components

代号 No.	名称 Description	数量 Qty	材料和备注 Material and Remark
①	底座 Cam Holder	1	QT450
②	滑动块 Cam Slider	1	QT450
③	耐磨板 Wear Plate	1	铜合金 Bronze
④	驱动块 Cam Driver	1	QT450
⑤	导轨 Guide Bar	1	45
⑥	强制拉回 Positive Return Follower	1	45
⑦	凸V型 Cam Slide Guide	1	铜合金 Bronze
⑧	弹簧挡板 Spring Block	1	45
⑩	螺旋弹簧 Coil Spring	1	TL27-65
⑪	缓冲块 Stopper	2	φ10×10
⑫	内螺纹圆柱销 Dowel Pin With Female Thread	3	φ8×30
⑭	内六角螺钉 Hexagon Socket Head Bolt	1	LCS-8-18
⑯	内六角螺钉 Hexagon Socket Head Bolt	4	M8×20
⑰	内六角螺钉 Hexagon Socket Head Bolt	2	M8×30
⑱	内六角螺钉 Hexagon Socket Head Bolt	2	M10×30
⑲	内六角螺钉 Hexagon Socket Head Bolt	1	M10×35

行程 Travel S	加工力 Working Force kN(tonf)		弹簧力 Spring Force N(kgf)		总重量 Total Weight kg	代号 Catalog No.	(W)	(θ)	SANKYO 代号对照 Catalog No.
	标准加工力 (100万回) Standard Working Force (one million strokes)	允许加工力 (30万回) Allowable Working Force (300,000 strokes)	初压 Initial Load	终压 Final Load					
57.6	19.6 (2.0)	39.2 (4.0)	226.8 (23.1)	982.8 (100.1)	12.0	KACC	50	70	UCMSC

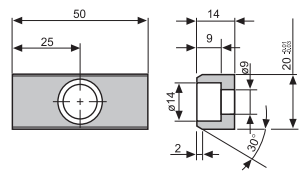
Order **Catalog No.** (W) - (θ)  
**KACC 50 - 70**

Option

追加编号 Option Code	明细 Specification
SC	安装面可以加长10到60mm(指定10mm单位) The mount surface is extended forward in the range of 10 to 60 mm(at increments of 10mm).
WC	安装面宽度加至65 The mount width is changed to 65.
N12	驱动块底座销孔改为φ12 Dowel pin holes of cam holder and cam driver are changed to φ12.

Order **KACC50-70-SC30-WC**  
**KACC50-70-WC**

### ■ 键详图 Key Specification



# KACC65-00

**Cam Diagram**

Press Travel: 15mm  
Travel: 15mm  
Angle: 45°

**■ 零部件表**  
Table of Components

代号 No.	名称 Description	数量 Qty	材料和备注 Material and Remark
①	底座 Cam Holder	1	QT450
②	滑动块 Cam Slider	1	QT450
③	驱动块 Cam Driver	1	QT450
④	压板 Slide Plate	2	铜合金 Bronze
⑤	强制拉回A Positive Return Follower A	1	45
⑥	强制拉回B Positive Return Follower B	1	45
⑦	凸V型 Cam Slide Guide	1	铜合金 Bronze
⑧	挡板 Spring Plate	1	45
⑨	弹簧销 Spring Guide Pin	2	45
⑩	安全挡板 Safety Plate	1	45
⑪	螺旋弹簧 Coil Spring	1	TM25-90
⑫	缓冲块 Stopper	2	φ10×5
⑬	内螺纹圆柱销 Dowel Pin With Female Thread	2	φ8×30
⑮	内六角螺钉 Hexagon Socket Head Bolt	8	LCS-8-18
⑯	内六角螺钉 Hexagon Socket Head Bolt	2	M6×10
⑰	内六角螺钉 Hexagon Socket Head Bolt	2	M10×30

行程 Travel S	加工力 Working Force kN(tonf)		弹簧力 Spring Force N(kgf)		总重量 Total Weight kg	代号 Catalog No.	(W)	(θ)	SANKYO 代号对照 Catalog No.
	标准加工力 (100万回) Standard Working Force (one million strokes)	允许加工力 (30万回) Allowable Working Force (300,000 strokes)	初压 Initial Load	终压 Final Load					
15.0	19.6 (2.0)	39.2 (4.0)	288.3 (29.4)	1187.2 (121.0)	9.5	<b>KACC</b>	<b>65</b>	<b>00</b>	<b>UCMSC</b>

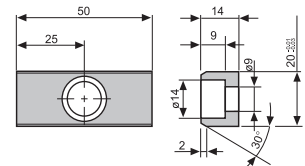


Order

 Catalog No. (W) - (θ)  
**KACC 65 - 00**


Option

追加编号 Option Code	明细 Specification
<b>SC</b>	安装面可以加长10到60mm(指定10mm单位) The mount surface is extended forward in the range of 10 to 60 mm(at increments of 10mm).


 Order **KACC65-00-SC30**
**■ 键详图 Key Specification**

**KACC 65**



# KACC65-05

### ■ 零部件表 Table of Components

代号 No.	名称 Description	数量 Qty	材料和备注 Material and Remark
①	底座 Cam Holder	1	QT450
②	滑动块 Cam Slider	1	QT450
③	驱动块 Cam Driver	1	QT450
④	压板 Slide Plate	2	铜合金 Bronze
⑤	强制拉回A Positive Return Follower A	1	45
⑥	强制拉回B Positive Return Follower B	1	45
⑦	凸V型 Cam Slide Guide	1	铜合金 Bronze
⑧	挡板 Spring Plate	1	45
⑨	弹簧销 Spring Guide Pin	2	45
⑩	安全挡板 Safety Plate	1	45
⑪	螺旋弹簧 Coil Spring	1	TM25-90
⑫	缓冲块 Stopper	2	φ10×5
⑬	内螺纹圆柱销 Dowel Pin With Female Thread	2	φ8×30
⑮	内六角螺钉 Hexagon Socket Head Bolt	8	LCS-8-18
⑯	内六角螺钉 Hexagon Socket Head Bolt	2	M6×10
⑰	内六角螺钉 Hexagon Socket Head Bolt	2	M10×30

行程 Travel S	加工力 Working Force kN(tonf)		弹簧力 Spring Force N(kgf)		总重量 Total Weight kg	代号 Catalog No.	(W)	(θ)	SANKYO 代号对照 Catalog No.
	标准加工力 (100万回) Standard Working Force (one million strokes)	允许加工力 (30万回) Allowable Working Force (300,000 strokes)	初压 Initial Load	终压 Final Load					
15.1	19.6 (2.0)	39.2 (4.0)	356.2 (36.3)	1187.2 (121.0)	9.3	KACC	65	05	UCMSC

Order

Option

Catalog No.	(W) - (θ)
<b>KACC</b>	<b>65 - 05</b>
追加编号 Option Code	明细 Specification
<b>SC</b>	安装面可以加长10到60mm(指定10mm单位) The mount surface is extended forward in the range of 10 to 60 mm(at increments of 10mm).

Order **KACC65-05-SC30**

### ■ 键详图 Key Specification

# KACC65-10

### ■ 零部件表 Table of Components

代号 No.	名称 Description	数量 Qty	材料和备注 Material and Remark
①	底座 Cam Holder	1	QT450
②	滑动块 Cam Slider	1	QT450
③	驱动块 Cam Driver	1	QT450
④	压板 Slide Plate	2	铜合金 Bronze
⑤	强制拉回A Positive Return Follower A	1	45
⑥	强制拉回B Positive Return Follower B	1	45
⑦	凸V型 Cam Slide Guide	1	铜合金 Bronze
⑧	挡板 Spring Plate	1	45
⑨	弹簧销 Spring Guide Pin	2	45
⑩	安全挡板 Safety Plate	1	45
⑪	螺旋弹簧 Coil Spring	1	TM25-80
⑫	缓冲块 Stopper	2	φ10×5
⑬	内螺纹圆柱销 Dowel Pin With Female Thread	2	φ8×30
⑮	内六角螺钉 Hexagon Socket Head Bolt	8	LCS-8-18
⑯	内六角螺钉 Hexagon Socket Head Bolt	2	M6×10
⑰	内六角螺钉 Hexagon Socket Head Bolt	2	M10×30

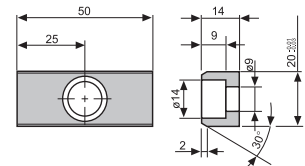
行程 Travel S	加工力 Working Force kN(tonf)		弹簧力 Spring Force N(kgf)		总重量 Total Weight kg	代号 Catalog No.	(W)	(θ)	SANKYO 代号对照 Catalog No.
	标准加工力 (100万回) Standard Working Force (one million strokes)	允许加工力 (30万回) Allowable Working Force (300,000 strokes)	初压 Initial Load	终压 Final Load					
15.2	19.6 (2.0)	39.2 (4.0)	348.2 (35.5)	1221.1 (124.4)	9.0	KACC	65	10	UCMSC

Order Catalog No. (W) - (θ)  
**KACC 65 - 10**

Option 追加编号  
Option Code 明细  
Specification  
**SC** 安装面可以加长10到60mm(指定10mm单位)  
The mount surface is extended forward in the range of 10 to 60 mm(at increments of 10mm).

Order **KACC65-10-SC30**

### ■ 键详图 Key Specification



**KACC 65**

# KACC65-15

Technical drawings showing dimensions for the Cam Holder, Cam Slider, Cam Driver, Slide Plate, and Cam Slide Guide. Dimensions include 15±0.05, 140±0.02, 2-φ10H7, 4-φ13-φ20, 20H7, 50±0.05, 170, 65, 40, 12.5, 6.3, 180, 177.2, 66.33, 15.5 Travel, 113.67, 15°(θ), 65(W), 120°, 130, 100±0.02, 4-φ13-φ20, 2-φ10H7, 17.3, 12.7, 15.5 Travel, 15°, 30°, 90°.

**■ 零部件表**  
Table of Components

代号 No.	名称 Description	数量 Qty	材料和备注 Material and Remark
①	底座 Cam Holder	1	QT450
②	滑动块 Cam Slider	1	QT450
③	驱动块 Cam Driver	1	QT450
④	压板 Slide Plate	2	铜合金 Bronze
⑤	强制拉回A Positive Return Follower A	1	45
⑥	强制拉回B Positive Return Follower B	1	45
⑦	凸V型 Cam Slide Guide	1	铜合金 Bronze
⑧	挡板 Spring Plate	1	45
⑨	弹簧销 Spring Guide Pin	2	45
⑩	安全挡板 Safety Plate	1	45
⑪	螺旋弹簧 Coil Spring	1	TM25-80
⑫	缓冲块 Stopper	2	φ10×5
⑬	内螺纹圆柱销 Dowel Pin With Female Thread	2	φ8×30
⑮	内六角螺钉 Hexagon Socket Head Bolt	8	LCS-8-18
⑯	内六角螺钉 Hexagon Socket Head Bolt	2	M6×10
⑰	内六角螺钉 Hexagon Socket Head Bolt	2	M10×30

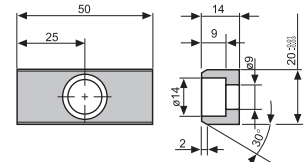
行程 Travel S	加工力 Working Force kN(tonf)		弹簧力 Spring Force N(kgf)		总重量 Total Weight kg	代号 Catalog No.	(W)	(θ)	SANKYO 代号对照 Catalog No.
	标准加工力 (100万回) Standard Working Force (one million strokes)	允许加工力 (30万回) Allowable Working Force (300,000 strokes)	初压 Initial Load	终压 Final Load					
15.5	19.6 (2.0)	39.2 (4.0)	395.9 (40.3)	1221.1 (124.4)	8.8	KACC	65	15	UCMSC

Order **Catalog No.** (W) - (θ)  
**KACC 65 - 15**

Option **追加编号 Option Code** **明细 Specification**  
**SC** 安装面可以加长10到60mm(指定10mm单位)  
The mount surface is extended forward in the range of 10 to 60 mm(at increments of 10mm).

Order **KACC65-15-SC30**

**■ 键详图 Key Specification**



# KACC65-20

### ■ 零部件表 Table of Components

代号 No.	名称 Description	数量 Qty	材料和备注 Material and Remark
①	底座 Cam Holder	1	QT450
②	滑动块 Cam Slider	1	QT450
③	驱动块 Cam Driver	1	QT450
④	压板 Slide Plate	2	铜合金 Bronze
⑤	强制拉回A Positive Return Follower A	1	45
⑥	强制拉回B Positive Return Follower B	1	45
⑦	凸V型 Cam Slide Guide	1	铜合金 Bronze
⑧	挡板 Spring Plate	1	45
⑨	弹簧销 Spring Guide Pin	2	45
⑩	安全挡板 Safety Plate	1	45
⑪	螺旋弹簧 Coil Spring	1	TM25-80
⑫	缓冲块 Stopper	2	φ10×5
⑬	内螺纹圆柱销 Dowel Pin With Female Thread	2	φ8×30
⑮	内六角螺钉 Hexagon Socket Head Bolt	8	LCS-8-18
⑯	内六角螺钉 Hexagon Socket Head Bolt	2	M6×10
⑰	内六角螺钉 Hexagon Socket Head Bolt	2	M10×30

行程 Travel S	加工力 Working Force kN(tonf)		弹簧力 Spring Force N(kgf)		总重量 Total Weight kg	代号 Catalog No.	(W)	(θ)	SANKYO 代号对照 Catalog No.
	标准加工力 (100万回) Standard Working Force (one million strokes)	允许加工力 (30万回) Allowable Working Force (300,000 strokes)	初压 Initial Load	终压 Final Load					
16.5	19.6 (2.0)	39.2 (4.0)	405.5 (41.3)	1221.1 (124.4)	8.6	KACC	65	20	UCMSC



Order

Catalog No. (W) - (θ)  
**KACC 65 - 20**



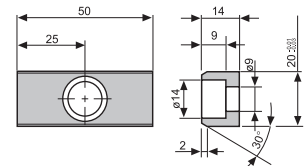
Option

追加编号 Option Code	明细 Specification
SC	安装面可以加长10到60mm(指定10mm单位) The mount surface is extended forward in the range of 10 to 60 mm(at increments of 10mm).



Order **KACC65-20-SC30**

### ■ 键详图 Key Specification



KACC  
65

# KACC65-25

**Cam Diagram**

17.1 Travel, 14.5 Press Travel, 25°

17.1 Travel, 65(V center), 120°

**■ 零部件表**  
Table of Components

代号 No.	名称 Description	数量 Qty	材料和备注 Material and Remark
①	底座 Cam Holder	1	QT450
②	滑动块 Cam Slider	1	QT450
③	驱动块 Cam Driver	1	QT450
④	压板 Slide Plate	2	铜合金 Bronze
⑤	强制拉回A Positive Return Follower A	1	45
⑥	强制拉回B Positive Return Follower B	1	45
⑦	凸V型 Cam Slide Guide	1	铜合金 Bronze
⑧	挡板 Spring Plate	1	45
⑨	弹簧销 Spring Guide Pin	2	45
⑩	安全挡板 Safety Plate	1	45
⑪	螺旋弹簧 Coil Spring	1	TM25-80
⑫	缓冲块 Stopper	2	∅10×5
⑬	内螺纹圆柱销 Dowel Pin With Female Thread	2	∅8×30
⑮	内六角螺钉 Hexagon Socket Head Bolt	8	LCS-8-18
⑯	内六角螺钉 Hexagon Socket Head Bolt	2	M6×10
⑰	内六角螺钉 Hexagon Socket Head Bolt	2	M10×30

行程 Travel S	加工力 Working Force kN(tonf)		弹簧力 Spring Force N(kgf)		总重量 Total Weight kg	代号 Catalog No.	(W)	(θ)	SANKYO 代号对照 Catalog No.
	标准加工力 (100万回) Standard Working Force (one million strokes)	允许加工力 (30万回) Allowable Working Force (300,000 strokes)	初压 Initial Load	终压 Final Load					
17.1	19.6 (2.0)	39.2 (4.0)	405.5 (41.3)	1221.1 (124.4)	8.5	KACC	65	25	UCMSC

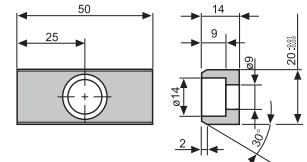
Order

Option

Catalog No.	(W) - (θ)
<b>KACC</b>	<b>65 - 25</b>
追加编号 Option Code	明细 Specification
<b>SC</b>	安装面可以加长10到60mm(指定10mm单位) The mount surface is extended forward in the range of 10 to 60 mm(at increments of 10mm).

Order **KACC65-25-SC30**

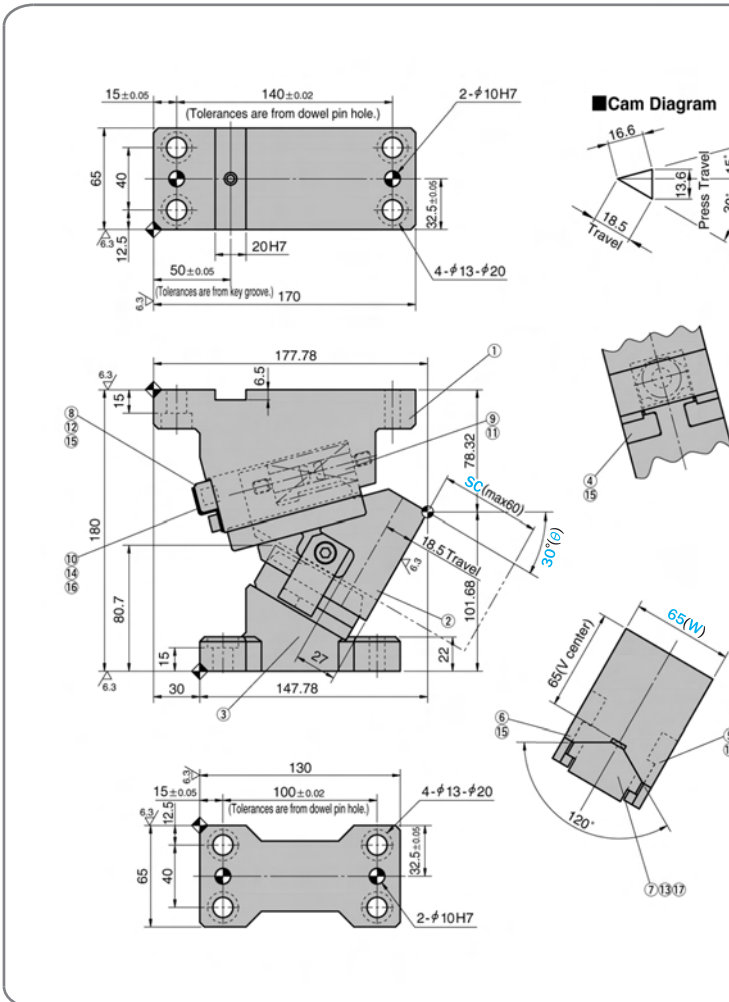
**■ 键详图 Key Specification**



# KACC65-30

## ■ 零部件表 Table of Components

代号 No.	名称 Description	数量 Qty	材料和备注 Material and Remark
①	底座 Cam Holder	1	QT450
②	滑动块 Cam Slider	1	QT450
③	驱动块 Cam Driver	1	QT450
④	压板 Slide Plate	2	铜合金 Bronze
⑤	强制拉回A Positive Return Follower A	1	45
⑥	强制拉回B Positive Return Follower B	1	45
⑦	凸V型 Cam Slide Guide	1	铜合金 Bronze
⑧	挡板 Spring Plate	1	45
⑨	弹簧销 Spring Guide Pin	2	45
⑩	安全挡板 Safety Plate	1	45
⑪	螺旋弹簧 Coil Spring	1	TM25-80
⑫	缓冲块 Stopper	2	φ10×5
⑬	内螺纹圆柱销 Dowel Pin With Female Thread	2	φ8×30
⑮	内六角螺钉 Hexagon Socket Head Bolt	8	LCS-8-18
⑯	内六角螺钉 Hexagon Socket Head Bolt	2	M6×10
⑰	内六角螺钉 Hexagon Socket Head Bolt	2	M10×30



行程 Travel S	加工力 Working Force kN(tonf)		弹簧力 Spring Force N(kgf)		总重量 Total Weight kg	代号 Catalog No.	(W)	(θ)	SANKYO 代号对照 Catalog No.
	标准加工力 (100万回) Standard Working Force (one million strokes)	允许加工力 (30万回) Allowable Working Force (300,000 strokes)	初压 Initial Load	终压 Final Load					
18.5	19.6 (2.0)	39.2 (4.0)	429.3 (43.7)	1221.1 (124.4)	8.3	KACC	65	30	UCMSC



Order

Catalog No. (W) - (θ)  
**KACC 65 - 30**



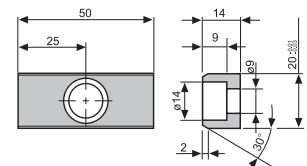
Option

追加编号 Option Code	明细 Specification
SC	安装面可以加长10到60mm(指定10mm单位) The mount surface is extended forward in the range of 10 to 60 mm(at increments of 10mm).



Order **KACC65-30-SC30**

## ■ 键详图 Key Specification



KACC  
65



# KACC65-35

**Cam Diagram**

16.6  
19.6 Travel  
15.5  
15°  
35°  
Press Travel

### ■ 零部件表 Table of Components

代号 No.	名称 Description	数量 Qty	材料和备注 Material and Remark
①	底座 Cam Holder	1	QT450
②	滑动块 Cam Slider	1	QT450
③	驱动块 Cam Driver	1	QT450
④	压板 Slide Plate	2	铜合金 Bronze
⑤	强制拉回A Positive Return Follower A	1	45
⑥	强制拉回B Positive Return Follower B	1	45
⑦	凸V型 Cam Slide Guide	1	铜合金 Bronze
⑧	挡板 Spring Plate	1	45
⑨	弹簧销 Spring Guide Pin	2	45
⑩	安全挡板 Safety Plate	1	45
⑪	螺旋弹簧 Coil Spring	1	TM25-80
⑫	缓冲块 Stopper	2	ø10×5
⑬	内螺纹圆柱销 Dowel Pin With Female Thread	2	ø8×30
⑮	内六角螺钉 Hexagon Socket Head Bolt	8	LCS-8-18
⑯	内六角螺钉 Hexagon Socket Head Bolt	2	M6×10
⑰	内六角螺钉 Hexagon Socket Head Bolt	2	M10×30

行程 Travel S	加工力 Working Force kN(tonf)		弹簧力 Spring Force N(kgf)		总重量 Total Weight kg	代号 Catalog No.	(W)	(θ)	SANKYO 代号对照 Catalog No.
	标准加工力 (100万回) Standard Working Force (one million strokes)	允许加工力 (30万回) Allowable Working Force (300,000 strokes)	初压 Initial Load	终压 Final Load					
19.6	19.6 (2.0)	39.2 (4.0)	429.3 (43.7)	1221.1 (124.4)	8.3	KACC	65	35	UCMSC

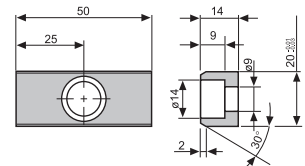
Order Catalog No. (W) - (θ)  
**KACC 65 - 35**

Option 追加编号  
Option Code 明细  
Specification

**SC** 安装面可以加长10到60mm(指定10mm单位)  
The mount surface is extended forward in the range of 10 to 60 mm(at increments of 10mm).

Order **KACC65-35-SC30**

### ■ 键详图 Key Specification







# KACC65-45

**Cam Diagram**

Press Travel: 17.9  
Travel: 23.3  
45°

### ■ 零部件表 Table of Components

代号 No.	名称 Description	数量 Qty	材料和备注 Material and Remark
①	底座 Cam Holder	1	QT450
②	滑动块 Cam Slider	1	QT450
③	驱动块 Cam Driver	1	QT450
④	压板 Slide Plate	2	铜合金 Bronze
⑤	强制拉回A Positive Return Follower A	1	45
⑥	强制拉回B Positive Return Follower B	1	45
⑦	凸V型 Cam Slide Guide	1	铜合金 Bronze
⑧	挡板 Spring Plate	1	45
⑨	弹簧销 Spring Guide Pin	2	45
⑩	安全挡板 Safety Plate	1	45
⑪	螺旋弹簧 Coil Spring	1	TM25-80
⑫	缓冲块 Stopper	2	ø10×5
⑬	内螺纹圆柱销 Dowel Pin With Female Thread	2	ø8×30
⑮	内六角螺钉 Hexagon Socket Head Bolt	8	LCS-8-18
⑯	内六角螺钉 Hexagon Socket Head Bolt	2	M6×10
⑰	内六角螺钉 Hexagon Socket Head Bolt	2	M10×30

行程 Travel S	加工力 Working Force kN(tonf)		弹簧力 Spring Force N(kgf)		总重量 Total Weight kg	代号 Catalog No.	(W)	(θ)	SANKYO 代号对照 Catalog No.
	标准加工力 (100万回) Standard Working Force (one million strokes)	允许加工力 (30万回) Allowable Working Force (300,000 strokes)	初压 Initial Load	终压 Final Load					
23.3	19.6 (2.0)	39.2 (4.0)	434.1 (44.2)	1221.1 (124.4)	8.1	<b>KACC</b>	<b>65</b>	<b>45</b>	<b>UCMSC</b>



Order

Catalog No. (W) - (θ)  
**KACC 65 - 45**



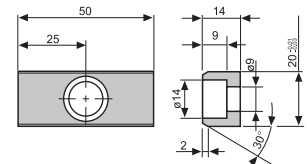
Option

追加编号 Option Code	明细 Specification
<b>SC</b>	安装面可以加长10到60mm(指定10mm单位) The mount surface is extended forward in the range of 10 to 60 mm(at increments of 10mm).



Order **KACC65-45-SC30**

### ■ 键详图 Key Specification



# KACC65-50

**Cam Diagram**

Dimensions: 17.1, 28.5 Travel, 18.8, Press Travel, 5°, 50°

■ 零部件表  
Table of Components

代号 No.	名称 Description	数量 Qty	材料和备注 Material and Remark
①	底座 Cam Holder	1	QT450
②	滑动块 Cam Slider	1	QT450
③	驱动块 Cam Driver	1	QT450
④	压板 Slide Plate	2	铜合金 Bronze
⑤	强制拉回A Positive Return Follower A	1	45
⑥	强制拉回B Positive Return Follower B	1	45
⑦	凸V型 Cam Slide Guide	1	铜合金 Bronze
⑧	挡板 Spring Plate	1	45
⑨	弹簧销 Spring Guide Pin	2	45
⑩	安全挡板 Safety Plate	1	45
⑪	螺旋弹簧 Coil Spring	1	TM25-80
⑫	缓冲块 Stopper	2	φ10×5
⑬	内螺纹圆柱销 Dowel Pin With Female Thread	2	φ8×30
⑮	内六角螺钉 Hexagon Socket Head Bolt	8	LCS-8-18
⑯	内六角螺钉 Hexagon Socket Head Bolt	2	M6×10
⑰	内六角螺钉 Hexagon Socket Head Bolt	2	M10×30

行程 Travel S	加工力 Working Force kN(tonf)		弹簧力 Spring Force N(kgf)		总重量 Total Weight kg	代号 Catalog No.	(W)	(θ)	SANKYO 代号对照 Catalog No.
	标准加工力 (100万回) Standard Working Force (one million strokes)	允许加工力 (30万回) Allowable Working Force (300,000 strokes)	初压 Initial Load	终压 Final Load					
26.5	19.6 (2.0)	39.2 (4.0)	405.5 (41.3)	1221.1 (124.4)	8.4	KACC	65	50	UCMSC



Order

Catalog No. (W) - (θ)  
**KACC 65 - 50**



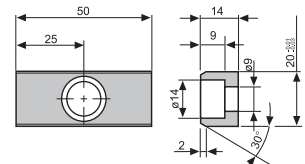
Option

追加编号 Option Code	明细 Specification
SC	安装面可以加长10到60mm(指定10mm单位) The mount surface is extended forward in the range of 10 to 60 mm(at increments of 10mm).



Order **KACC65-50-SC30**

■ 键详图 Key Specification



KACC  
65

# KACC65-55

**Cam Diagram**

17.1  
22.8  
5°  
22.7  
Press Travel  
55°  
Travel

### ■ 零部件表

#### Table of Components

代号 No.	名称 Description	数量 Qty	材料和备注 Material and Remark
①	底座 Cam Holder	1	QT450
②	滑动块 Cam Slider	1	QT450
③	驱动块 Cam Driver	1	QT450
④	压板 Slide Plate	2	铜合金 Bronze
⑤	强制拉回A Positive Return Follower A	1	45
⑥	强制拉回B Positive Return Follower B	1	45
⑦	凸V型 Cam Slide Guide	1	铜合金 Bronze
⑧	挡板 Spring Plate	1	45
⑨	弹簧销 Spring Guide Pin	2	45
⑩	安全挡板 Safety Plate	1	45
⑪	螺旋弹簧 Coil Spring	1	TM25-80
⑫	缓冲块 Stopper	2	φ10×5
⑬	内螺纹圆柱销 Dowel Pin With Female Thread	2	φ8×30
⑮	内六角螺钉 Hexagon Socket Head Bolt	8	LCS-8-18
⑯	内六角螺钉 Hexagon Socket Head Bolt	2	M6×10
⑰	内六角螺钉 Hexagon Socket Head Bolt	2	M10×30

行程 Travel S	加工力 Working Force kN(tonf)		弹簧力 Spring Force N(kgf)		总重量 Total Weight kg	代号 Catalog No.	(W)	(θ)	SANKYO 代号对照 Catalog No.
	标准加工力 (100万回) Standard Working Force (one million strokes)	允许加工力 (30万回) Allowable Working Force (300,000 strokes)	初压 Initial Load	终压 Final Load					
29.7	19.6 (2.0)	39.2 (4.0)	405.5 (41.3)	1221.1 (124.4)	8.4	KACC	65	55	UCMSC



Order

Catalog No. (W) - (θ)  
**KACC 65 - 55**



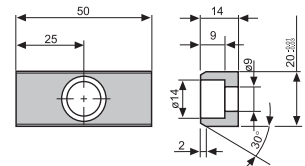
Option

追加编号 Option Code	明细 Specification
SC	安装面可以加长10到60mm(指定10mm单位) The mount surface is extended forward in the range of 10 to 60 mm(at increments of 10mm).



Order **KACC65-55-SC30**

### ■ 键详图 Key Specification



# KACC65-60

**Cam Diagram**

**■ 零部件表**  
Table of Components

代号 No.	名称 Description	数量 Qty	材料和备注 Material and Remark
①	底座 Cam Holder	1	QT450
②	滑动块 Cam Slider	1	QT450
③	驱动块 Cam Driver	1	QT450
④	压板 Slide Plate	2	铜合金 Bronze
⑤	强制拉回A Positive Return Follower A	1	45
⑥	强制拉回B Positive Return Follower B	1	45
⑦	凸V型 Cam Slide Guide	1	铜合金 Bronze
⑧	挡板 Spring Plate	1	45
⑨	弹簧销 Spring Guide Pin	2	45
⑩	安全挡板 Safety Plate	1	45
⑪	螺旋弹簧 Coil Spring	1	TM25-80
⑫	缓冲块 Stopper	2	ø10×5
⑬	内螺纹圆柱销 Dowel Pin With Female Thread	2	ø8×30
⑮	内六角螺钉 Hexagon Socket Head Bolt	8	LCS-8-18
⑯	内六角螺钉 Hexagon Socket Head Bolt	2	M6×10
⑰	内六角螺钉 Hexagon Socket Head Bolt	2	M10×30

行程 Travel S	加工力 Working Force kN(tonf)		弹簧力 Spring Force N(kgf)		总重量 Total Weight kg	代号 Catalog No.	(W)	(θ)	SANKYO 代号对照 Catalog No.
	标准加工力 (100万回) Standard Working Force (one million strokes)	允许加工力 (30万回) Allowable Working Force (300,000 strokes)	初压 Initial Load	终压 Final Load					
35.0	19.6 (2.0)	39.2 (4.0)	357.8 (36.5)	1221.1 (124.4)	9.3	KACC	65	60	UCMSC



Order

Catalog No. (W) - (θ)  
**KACC 65 - 60**



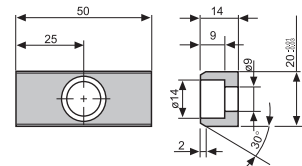
Option

追加编号 Option Code	明细 Specification
SC	安装面可以加长10到60mm(指定10mm单位) The mount surface is extended forward in the range of 10 to 60 mm(at increments of 10mm).



Order **KACC65-60-SC30**

**■ 键详图 Key Specification**



KACC  
65

# KACC65-65

**Cam Diagram**

### ■ 零部件表 Table of Components

代号 No.	名称 Description	数量 Qty	材料和备注 Material and Remark
①	底座 Cam Holder	1	QT450
②	滑动块 Cam Slider	1	QT450
③	驱动块 Cam Driver	1	QT450
④	压板 Slide Plate	2	铜合金 Bronze
⑤	强制拉回A Positive Return Follower A	1	45
⑥	强制拉回B Positive Return Follower B	1	45
⑦	凸V型 Cam Slide Guide	1	铜合金 Bronze
⑧	挡板 Spring Plate	1	45
⑨	弹簧销 Spring Guide Pin	2	45
⑩	安全挡板 Safety Plate	1	45
⑪	螺旋弹簧 Coil Spring	1	TM25-80
⑫	缓冲块 Stopper	2	ø10×5
⑬	内螺纹圆柱销 Dowel Pin With Female Thread	2	ø8×30
⑮	内六角螺钉 Hexagon Socket Head Bolt	8	LCS-8-18
⑯	内六角螺钉 Hexagon Socket Head Bolt	2	M6×10
⑰	内六角螺钉 Hexagon Socket Head Bolt	2	M10×30

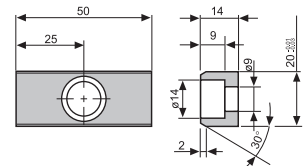
行程 Travel S	加工力 Working Force kN(tonf)		弹簧力 Spring Force N(kgf)		总重量 Total Weight kg	代号 Catalog No.	(W)	(θ)	SANKYO 代号对照 Catalog No.
	标准加工力 (100万回) Standard Working Force (one million strokes)	允许加工力 (30万回) Allowable Working Force (300,000 strokes)	初压 Initial Load	终压 Final Load					
41.4	19.6 (2.0)	39.2 (4.0)	357.8 (36.5)	1221.1 (124.4)	9.3	KACC	65	65	UCMSC

Order Catalog No. (W) - (θ)  
**KACC 65 - 65**

Option 追加编号  
Option Code 明细  
Specification  
**SC** 安装面可以加长10到60mm(指定10mm单位)  
The mount surface is extended forward in the range of 10 to 60 mm(at increments of 10mm).

Order **KACC65-65-SC30**

### ■ 键详图 Key Specification



# KACC65-70

**■ 零部件表**  
Table of Components

代号 No.	名称 Description	数量 Qty	材料和备注 Material and Remark
①	底座 Cam Holder	1	QT450
②	滑动块 Cam Slider	1	QT450
③	驱动块 Cam Driver	1	QT450
④	压板 Slide Plate	2	铜合金 Bronze
⑤	强制拉回A Positive Return Follower A	1	45
⑥	强制拉回B Positive Return Follower B	1	45
⑦	凸V型 Cam Slide Guide	1	铜合金 Bronze
⑧	挡板 Spring Plate	1	45
⑨	弹簧销 Spring Guide Pin	2	45
⑩	安全挡板 Safety Plate	1	45
⑪	螺旋弹簧 Coil Spring	1	TM25-80
⑫	缓冲块 Stopper	2	ø10×5
⑬	内螺纹圆柱销 Dowel Pin With Female Thread	2	ø8×30
⑮	内六角螺钉 Hexagon Socket Head Bolt	8	LCS-8-18
⑯	内六角螺钉 Hexagon Socket Head Bolt	2	M6×10
⑰	内六角螺钉 Hexagon Socket Head Bolt	2	M10×30

行程 Travel S	加工力 Working Force kN(tonf)		弹簧力 Spring Force N(kgf)		总重量 Total Weight kg	代号 Catalog No.	(W)	(θ)	SANKYO 代号对照 Catalog No.
	标准加工力 (100万回) Standard Working Force (one million strokes)	允许加工力 (30万回) Allowable Working Force (300,000 strokes)	初压 Initial Load	终压 Final Load					
51.5	19.6 (2.0)	39.2 (4.0)	357.8 (36.5)	1221.1 (124.4)	9.5	KACC	65	70	UCMSC



Order

Catalog No. (W) - (θ)  
**KACC 65 - 70**



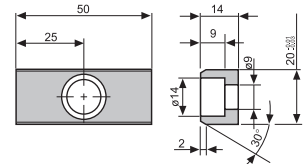
Option

追加编号 Option Code	明细 Specification
SC	安装面可以加长10到60mm(指定10mm单位) The mount surface is extended forward in the range of 10 to 60 mm(at increments of 10mm).



Order **KACC65-70-SC30**

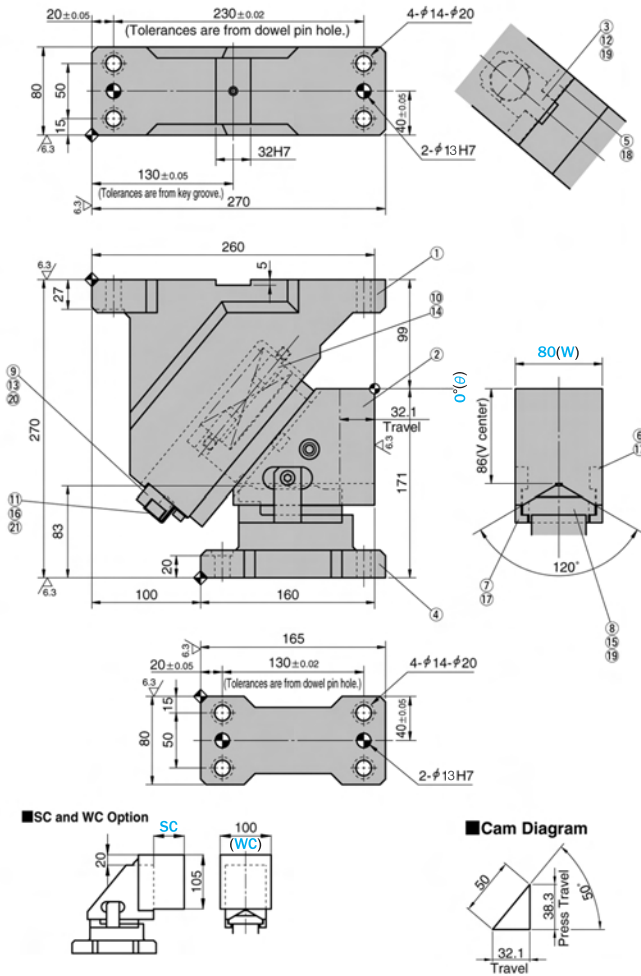
**■ 键详图 Key Specification**



KACC 65

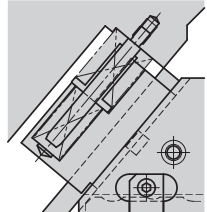


**KACC80-00**  
**KACF80-00**



■ 零部件表  
Table of Components

代号 No.	名称 Description	数量 Qty	材料和备注 Material and Remark
①	底座 Cam Holder	1	QT450
②	滑动块 Cam Slider	1	QT450
③	弹簧滑座 Spring Guide Block	1	QT450
④	驱动块 Cam Driver	1	QT450
⑤	压板 Slide Plate	2	铜合金 Bronze
⑥	强制拉回A Positive Return Follower A	1	45
⑦	强制拉回B Positive Return Follower B	1	45
⑧	凸V型 Cam Slide Guide	1	铜合金 Bronze
⑨	挡板 Spring Plate	1	45
⑩	弹簧销 Spring Guide Pin	2	45
⑪	安全挡板 Safety Plate	1	45
⑫	键 Key	1	45
⑬	缓冲块 Stopper	2	φ10×10
⑭	螺旋弹簧 Coil Spring	1	TL35-150



KACF80弹簧:  
初压: TF25-100  
终压: TH35-60

行程 Travel S	加工力 Working Force kN(tonf)		弹簧力 Spring Force N(kgf)		总重量 Total Weight kg	代号 Catalog No.	(W)	(θ)	SANKYO 代号对照 Catalog No.
	标准加工力 (100万回) Standard Working Force (one million strokes)	允许加工力 (30万回) Allowable Working Force (300,000 strokes)	初压 Initial Load	终压 Final Load					
32.1	39.2 (4.0)	78.4 (8.0)	271.0 (27.6)	1626.0 (165.6)	25.9	KACC KACF	80	00	UCMSC
	54.9 (5.6)	109.8 (11.2)	127.4 (13.0)	3250.0 (331.4)					UCMSF



Order

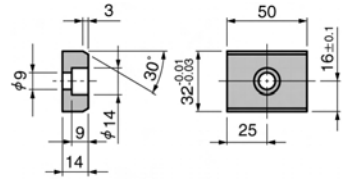
Catalog No. (W) - (θ)  
**KACC 80 - 00**  
**KACF 80 - 00**



Option

追加编号 Option Code	明细 Specification
SC	安装面可以加长10到60mm(指定10mm单位) The mount surface is extended forward in the range of 10 to 60 mm(at increments of 10mm).
WC	安装面宽度加至100。 The mount width is changed to 100.
N12	驱动块底座销孔改为φ12 Dowel pin holes of cam holder and cam driver are changed to φ12.

■ 键详图 Key Specification



Order **KACC80-00-SC30-WC**  
**KACF80-00-SC30-WC**





**KACC80-10**  
**KACF80-10**

**■ 零部件表 Table of Components**

代号 No.	名称 Description	数量 Qty	材料和备注 Material and Remark
①	底座 Cam Holder	1	QT450
②	滑动块 Cam Slider	1	QT450
③	弹簧滑座 Spring Guide Block	1	QT450
④	驱动块 Cam Driver	1	QT450
⑤	压板 Slide Plate	2	铜合金 Bronze
⑥	强制拉回A Positive Return Follower A	1	45
⑦	强制拉回B Positive Return Follower B	1	45
⑧	凸V型 Cam Slide Guide	1	铜合金 Bronze
⑨	挡板 Spring Plate	1	45
⑩	弹簧销 Spring Guide Pin	2	45
⑪	安全挡板 Safety Plate	1	45
⑫	键 Key	1	45
⑬	缓冲块 Stopper	2	φ10×10
⑭	螺旋弹簧 Coil Spring	1	TL35-150

**■ SC and WC Option**

**■ Cam Diagram**

KACF80弹簧:  
初压: TF25-100  
终压: TH35-60

行程 Travel S	加工力 Working Force kN(tonf)		弹簧力 Spring Force N(kgf)		总重量 Total Weight kg	代号 Catalog No.	(W)	(θ)	SANKYO 代号对照 Catalog No.
	标准加工力 (100万回) Standard Working Force (one million strokes)	允许加工力 (300万回) Allowable Working Force (300,000 strokes)	初压 Initial Load	终压 Final Load					
38.9	39.2 (4.0)	78.4 (8.0)	271.0 (27.6)	1626.0 (165.6)	26.6	KACC KACF	80	10	UCMSC
	54.9 (5.6)	109.8 (11.2)	127.4 (13.0)	3250.0 (331.4)					UCMSF



Order

Catalog No. (W) - (θ)  
**KACC 80 - 10**  
**KACF 80 - 10**



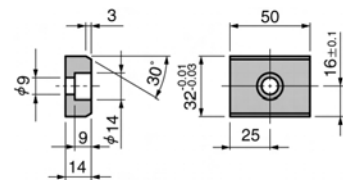
Option

追加编号 Option Code	明细 Specification
SC	安装面可以加长10到60mm(指定10mm单位) The mount surface is extended forward in the range of 10 to 60 mm(at increments of 10mm).
WC	安装面宽度加至100。 The mount width is changed to 100.
N12	驱动块底座销孔改为φ12 Dowel pin holes of cam holder and cam driver are changed to φ12.

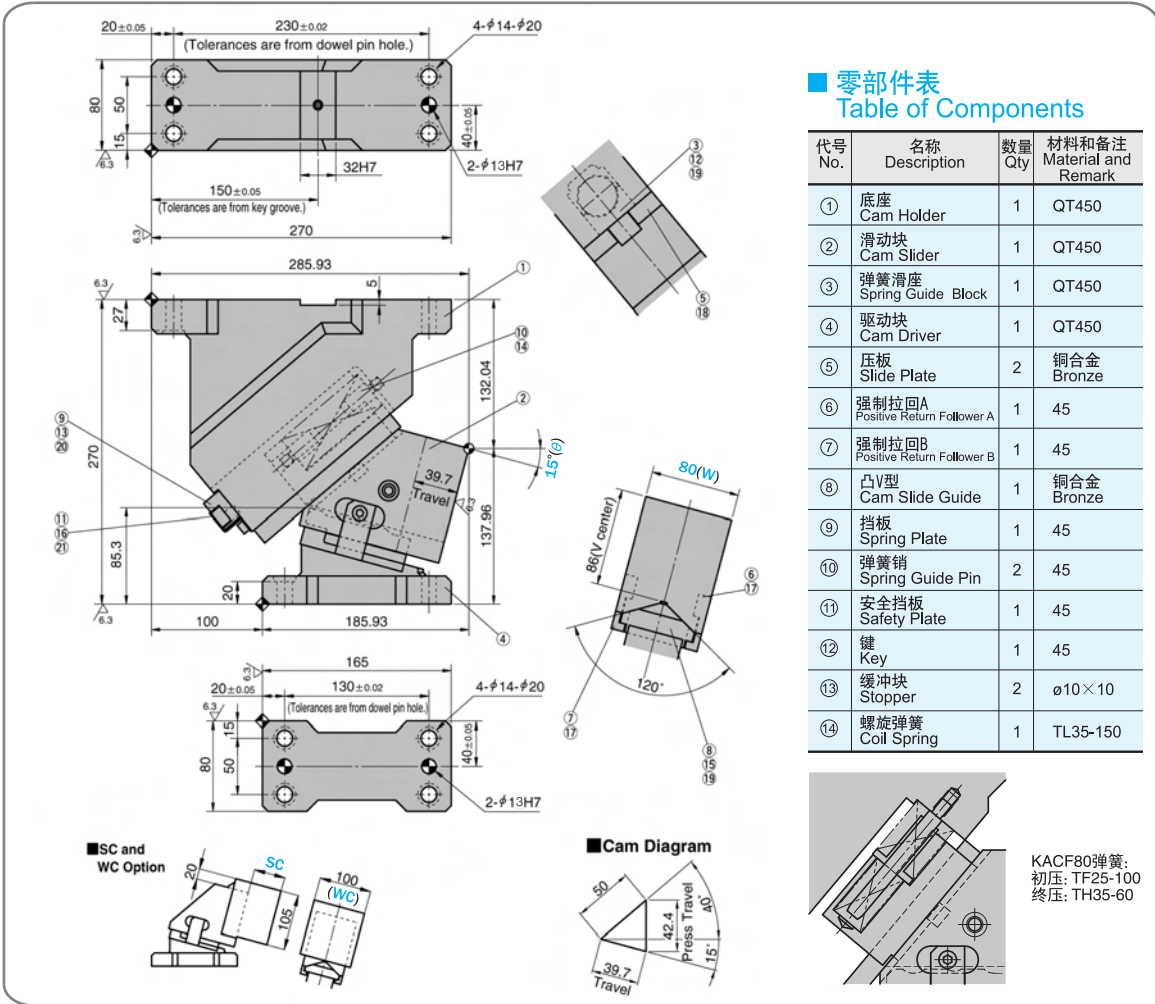


Order **KACC80-10-SC30-WC**  
**KACF80-10-SC30-WC**

**■ 键详图 Key Specification**



**KACC80-15**  
**KACF80-15**



■ 零部件表  
Table of Components

代号 No.	名称 Description	数量 Qty	材料和备注 Material and Remark
①	底座 Cam Holder	1	QT450
②	滑动块 Cam Slider	1	QT450
③	弹簧滑座 Spring Guide Block	1	QT450
④	驱动块 Cam Driver	1	QT450
⑤	压板 Slide Plate	2	铜合金 Bronze
⑥	强制拉回A Positive Return Follower A	1	45
⑦	强制拉回B Positive Return Follower B	1	45
⑧	凸V型 Cam Slide Guide	1	铜合金 Bronze
⑨	挡板 Spring Plate	1	45
⑩	弹簧销 Spring Guide Pin	2	45
⑪	安全挡板 Safety Plate	1	45
⑫	键 Key	1	45
⑬	缓冲块 Stopper	2	φ10×10
⑭	螺旋弹簧 Coil Spring	1	TL35-150

行程 Travel S	加工力 Working Force kN(tonf)		弹簧力 Spring Force N(kgf)		总重量 Total Weight kg	代号 Catalog No.	(W)	(θ)	SANKYO 代号对照 Catalog No.
	标准加工力 (100万回) Standard Working Force (one million strokes)	允许加工力 (30万回) Allowable Working Force (300,000 strokes)	初压 Initial Load	终压 Final Load					
39.7	39.2 (4.0)	78.4 (8.0)	271.0 (27.6)	1626.0 (165.6)	25.1	KACC KACF	80	15	UCMSC UCMSF
	54.9 (5.6)	109.8 (11.2)	127.4 (13.0)	3250.0 (331.4)					



Order

Catalog No. (W) - (θ)  
**KACC 80 - 15**  
**KACF 80 - 15**



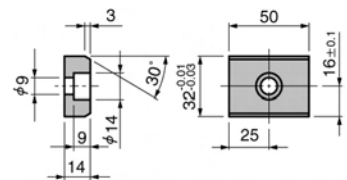
Option

追加编号 Option Code	明细 Specification
SC	安装面可以加长10到60mm(指定10mm单位) The mount surface is extended forward in the range of 10 to 60 mm(at increments of 10mm).
WC	安装面宽度加至100。 The mount width is changed to 100.
N12	驱动块底座销孔改为φ12 Dowel pin holes of cam holder and cam driver are changed to φ12.



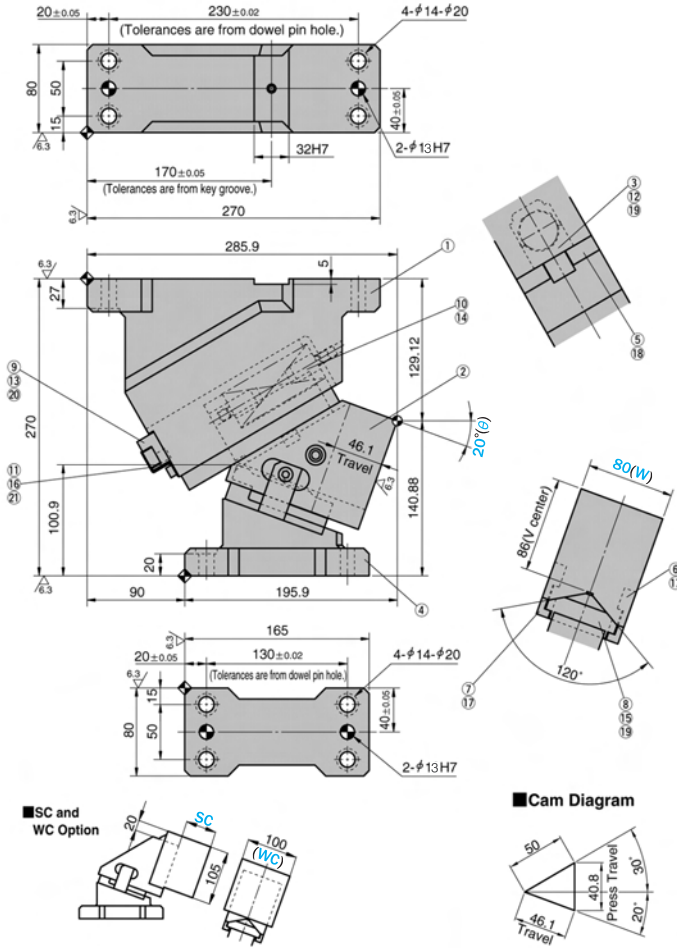
Order **KACC80-15-SC30-WC**  
**KACF80-15-SC30-WC**

■ 键详图 Key Specification



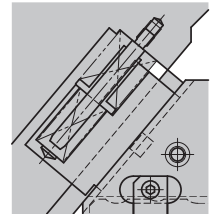
KACC  
KACF  
80

# KACC80-20 KACF80-20



## ■ 零部件表 Table of Components

代号 No.	名称 Description	数量 Qty	材料和备注 Material and Remark
①	底座 Cam Holder	1	QT450
②	滑动块 Cam Slider	1	QT450
③	弹簧滑座 Spring Guide Block	1	QT450
④	驱动块 Cam Driver	1	QT450
⑤	压板 Slide Plate	2	铜合金 Bronze
⑥	强制拉回A Positive Return Follower A	1	45
⑦	强制拉回B Positive Return Follower B	1	45
⑧	凸V型 Cam Slide Guide	1	铜合金 Bronze
⑨	挡板 Spring Plate	1	45
⑩	弹簧销 Spring Guide Pin	2	45
⑪	安全挡板 Safety Plate	1	45
⑫	键 Key	1	45
⑬	缓冲块 Stopper	2	φ10×10
⑭	螺旋弹簧 Coil Spring	1	TL35-150



KACF80弹簧:  
初压: TF25-100  
终压: TH35-60

行程 Travel S	加工力 Working Force kN(tonf)		弹簧力 Spring Force N(kgf)		总重量 Total Weight kg	代号 Catalog No.	(W)	(θ)	SANKYO 代号对照 Catalog No.
	标准加工力 (100万回) Standard Working Force (one million strokes)	允许加工力 (300万回) Allowable Working Force (300,000 strokes)	初压 Initial Load	终压 Final Load					
46.1	39.2 (4.0)	78.4 (8.0)	271.0 (27.6)	1626.0 (165.6)	25.3	KACC	80	20	UCMSC
	54.9 (5.6)	109.8 (11.2)	127.4 (13.0)	3250.0 (331.4)		KACF			UCMSF



Order

Catalog No.	(W) - (θ)
KACC	80 - 20
KACF	80 - 20



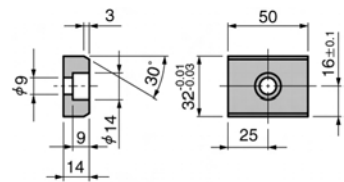
Option

追加编号 Option Code	明细 Specification
SC	安装面可以加长10到60mm(指定10mm单位) The mount surface is extended forward in the range of 10 to 60 mm(at increments of 10mm).
WC	安装面宽度加至100. The mount width is changed to 100.
N12	驱动块底座销孔改为φ12 Dowel pin holes of cam holder and cam driver are changed to φ12.

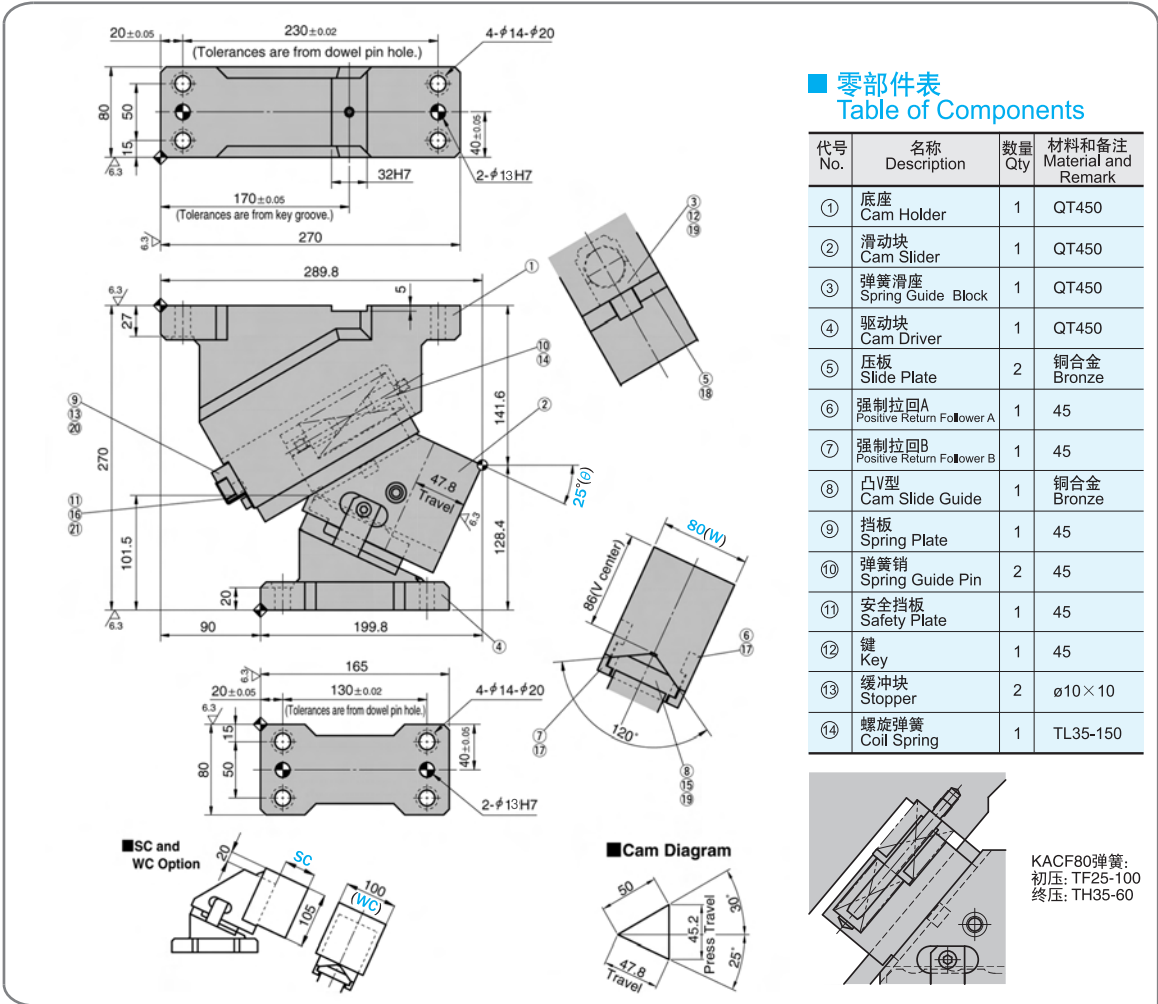


Order **KACC80-20-SC30-WC**  
**KACF80-20-SC30-WC**

## ■ 键详图 Key Specification

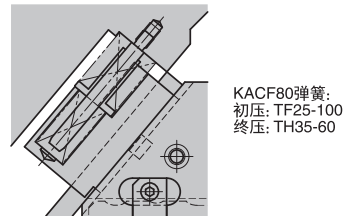


# KACC80-25 KACF80-25



## 零部件表 Table of Components

代号 No.	名称 Description	数量 Qty	材料和备注 Material and Remark
①	底座 Cam Holder	1	QT450
②	滑动块 Cam Slider	1	QT450
③	弹簧滑座 Spring Guide Block	1	QT450
④	驱动块 Cam Driver	1	QT450
⑤	压板 Slide Plate	2	铜合金 Bronze
⑥	强制拉回A Positive Return Follower A	1	45
⑦	强制拉回B Positive Return Follower B	1	45
⑧	凸V型 Cam Slide Guide	1	铜合金 Bronze
⑨	挡板 Spring Plate	1	45
⑩	弹簧销 Spring Guide Pin	2	45
⑪	安全挡板 Safety Plate	1	45
⑫	键 Key	1	45
⑬	缓冲块 Stopper	2	φ10×10
⑭	螺旋弹簧 Coil Spring	1	TL35-150



行程 Travel S	加工力 Working Force kN(tonf)		弹簧力 Spring Force N(kgf)		总重量 Total Weight kg	代号 Catalog No.	(W)	(θ)	SANKYO 代号对照 Catalog No.
	标准加工力 (100万回) Standard Working Force (one million strokes)	允许加工力 (30万回) Allowable Working Force (300,000 strokes)	初压 Initial Load	终压 Final Load					
47.8	39.2 (4.0)	78.4 (8.0)	271.0 (27.6)	1626.0 (165.6)	25.3	KACC KACF	80	25	UCMSC UCMSF
	54.9 (5.6)	109.8 (11.2)	127.4 (13.0)	3250.0 (331.4)					



Order

Catalog No. (W) - (θ)  
KACC 80 - 25  
KACF 80 - 25



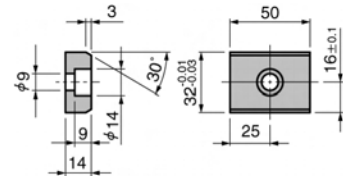
Option

追加编号 Option Code	明细 Specification
SC	安装面可以加长10到60mm(指定10mm单位) The mount surface is extended forward in the range of 10 to 60 mm(at increments of 10mm).
WC	安装面宽度加至100。 The mount width is changed to 100.
N12	驱动块底座销孔改为φ12 Dowel pin holes of cam holder and cam driver are changed to φ12.



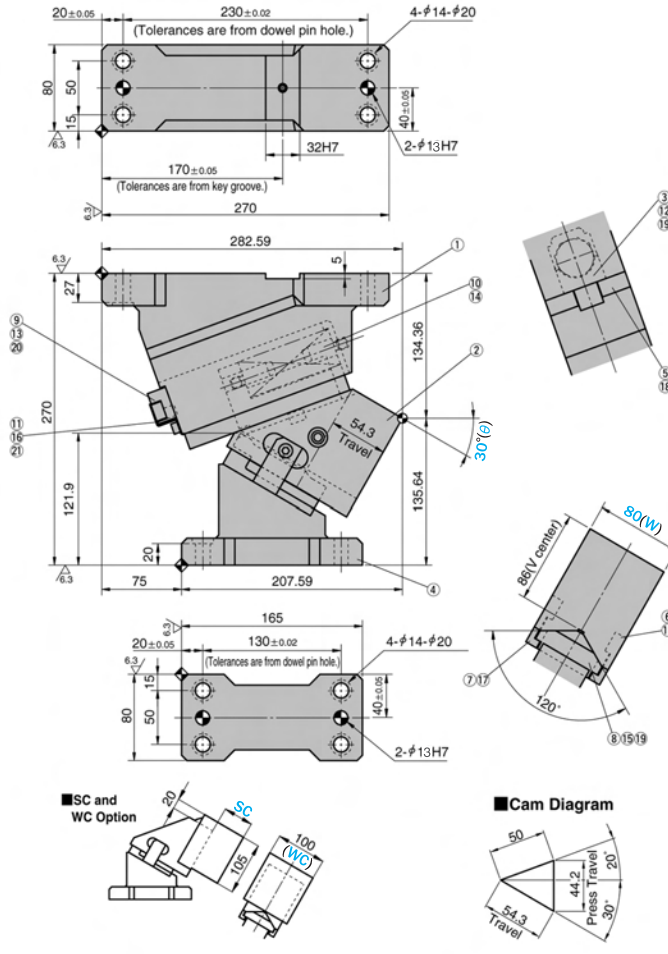
Order KACC80-25-SC30-WC  
KACF80-25-SC30-WC

## 键详图 Key Specification



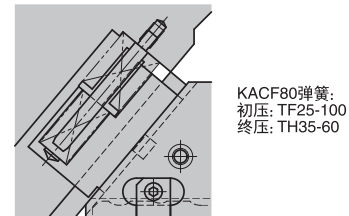
KACC  
KACF  
80

# KACC80-30 KACF80-30



## 零部件表 Table of Components

代号 No.	名称 Description	数量 Qty	材料和备注 Material and Remark
①	底座 Cam Holder	1	QT450
②	滑动块 Cam Slider	1	QT450
③	弹簧滑座 Spring Guide Block	1	QT450
④	驱动块 Cam Driver	1	QT450
⑤	压板 Slide Plate	2	铜合金 Bronze
⑥	强制拉回A Positive Return Follower A	1	45
⑦	强制拉回B Positive Return Follower B	1	45
⑧	凸V型 Cam Slide Guide	1	铜合金 Bronze
⑨	挡板 Spring Plate	1	45
⑩	弹簧销 Spring Guide Pin	2	45
⑪	安全挡板 Safety Plate	1	45
⑫	键 Key	1	45
⑬	缓冲块 Stopper	2	φ10×10
⑭	螺旋弹簧 Coil Spring	1	TL35-150



行程 Travel S	加工力 Working Force kN(tonf)		弹簧力 Spring Force N(kgf)		总重量 Total Weight kg	代号 Catalog No.	(W)	(θ)	SANKYO 代号对照 Catalog No.
	标准加工力 (100万回) Standard Working Force (one million strokes)	允许加工力 (300万回) Allowable Working Force (300,000 strokes)	初压 Initial Load	终压 Final Load					
54.3	39.2 (4.0)	78.4 (8.0)	271.0 (27.6)	1626.0 (165.6)	23.2	KACC KACF	80	30	UCMSC
	54.9 (5.6)	109.8 (11.2)	127.4 (13.0)	3250.0 (331.4)					UCMSF



Order

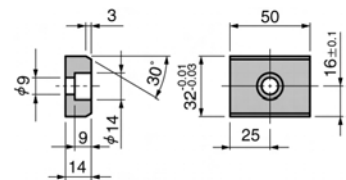
Catalog No.	(W)	(θ)
KACC	80	30
KACF	80	30



Option

追加编号 Option Code	明细 Specification
SC	安装面可以加长10到60mm(指定10mm单位) The mount surface is extended forward in the range of 10 to 60 mm(at increments of 10mm).
WC	安装面宽度加至100。 The mount width is changed to 100.
N12	驱动块底座销孔改为φ12 Dowel pin holes of cam holder and cam driver are changed to φ12.

## 键详图 Key Specification



Order **KACC80-30-SC30-WC**  
**KACF80-30-SC30-WC**







**KACC80-40**  
**KACF80-40**

20±0.05, 230±0.02, 4-φ14-φ20, 80, 15, 50, 170±0.05, 32H7, 2-φ13H7, 270, 274.8, 27, 10, 14, 140.38, 2, 270, 142.6, 20, 60, 214.8, 165, 20±0.05, 130±0.02, 4-φ14-φ20, 80, 15, 50, 40±0.05, 2-φ13H7, 80(V center), 80(W), 120°, 64.3 Travel, 40°(θ), 12, 19, 5, 18, 7, 17, 6, 17, 8, 15, 19, 105, 100, 105, 100, 50, 50, 10°, 40°, 64.3 Travel, 32.0±0.03, 3, 50, 16±0.1, 25, 14, 14, φ9, φ14, 30°

■SC and WC Option

■Cam Diagram

零件表  
Table of Components

代号 No.	名称 Description	数量 Qty	材料和备注 Material and Remark
①	底座 Cam Holder	1	QT450
②	滑动块 Cam Slider	1	QT450
③	弹簧滑座 Spring Guide Block	1	QT450
④	驱动块 Cam Driver	1	QT450
⑤	压板 Slide Plate	2	铜合金 Bronze
⑥	强制拉回A Positive Return Follower A	1	45
⑦	强制拉回B Positive Return Follower B	1	45
⑧	凸V型 Cam Slide Guide	1	铜合金 Bronze
⑨	挡板 Spring Plate	1	45
⑩	弹簧销 Spring Guide Pin	2	45
⑪	安全挡板 Safety Plate	1	45
⑫	键 Key	1	45
⑬	缓冲块 Stopper	2	φ10×10
⑭	螺旋弹簧 Coil Spring	1	TL35-150

KACF80弹簧:  
初压: TF25-100  
终压: TH35-60

行程 Travel S	加工力 Working Force kN(tonf)		弹簧力 Spring Force N(kgf)		总重量 Total Weight kg	代号 Catalog No.	(W)	(θ)	SANKYO 代号对照 Catalog No.
	标准加工力 (100万回) Standard Working Force (one million strokes)	允许加工力 (30万回) Allowable Working Force (300,000 strokes)	初压 Initial Load	终压 Final Load					
64.3	39.2 (4.0)	78.4 (8.0)	271.0 (27.6)	1626.0 (165.6)	22.4	KACC	80	40	UCMSC
	54.9 (5.6)	109.8 (11.2)	127.4 (13.0)	3250.0 (331.4)		KACF			UCMSF



Order

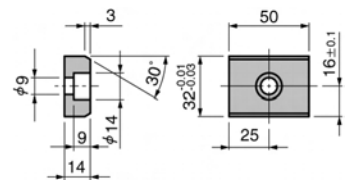
Catalog No. (W) - (θ)  
**KACC 80 - 40**  
**KACF 80 - 40**



Option

追加编号 Option Code	明细 Specification
SC	安装面可以加长10到60mm(指定10mm单位) The mount surface is extended forward in the range of 10 to 60 mm(at increments of 10mm).
WC	安装面宽度加至100。 The mount width is changed to 100.
N12	驱动块底座销孔改为φ12 Dowel pin holes of cam holder and cam driver are changed to φ12.

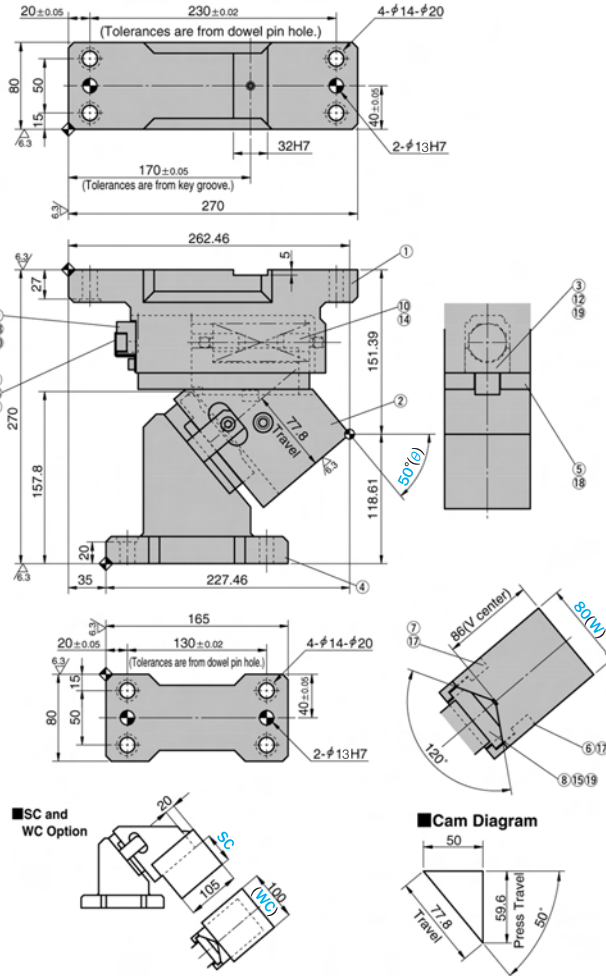
■键详图 Key Specification



Order **KACC80-40-SC30-WC**  
**KACF80-40-SC30-WC**

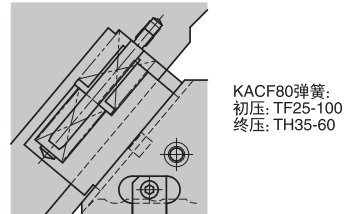


# KACC80-50 KACF80-50



## 零件表 Table of Components

代号 No.	名称 Description	数量 Qty	材料和备注 Material and Remark
①	底座 Cam Holder	1	QT450
②	滑动块 Cam Slider	1	QT450
③	弹簧滑座 Spring Guide Block	1	QT450
④	驱动块 Cam Driver	1	QT450
⑤	压板 Slide Plate	2	铜合金 Bronze
⑥	强制拉回A Positive Return Follower A	1	45
⑦	强制拉回B Positive Return Follower B	1	45
⑧	凸V型 Cam Slide Guide	1	铜合金 Bronze
⑨	挡板 Spring Plate	1	45
⑩	弹簧销 Spring Guide Pin	2	45
⑪	安全挡板 Safety Plate	1	45
⑫	键 Key	1	45
⑬	缓冲块 Stopper	2	φ10×10
⑭	螺旋弹簧 Coil Spring	1	TL35-150



行程 Travel S	加工力 Working Force kN(tonf)		弹簧力 Spring Force N(kgf)		总重量 Total Weight kg	代号 Catalog No.	(W)	(θ)	SANKYO 代号对照 Catalog No.
	标准加工力 (100万回) Standard Working Force (one million strokes)	允许加工力 (30万回) Allowable Working Force (300,000 strokes)	初压 Initial Load	终压 Final Load					
77.8	39.2 (4.0)	78.4 (8.0)	271.0 (27.6)	1626.0 (165.6)	21.6	KACC KACF	80	50	UCMSC
	54.9 (5.6)	109.8 (11.2)	127.4 (13.0)	3250.0 (331.4)					UCMSF



Order

Catalog No.	(W)	(θ)
KACC	80	50
KACF	80	50



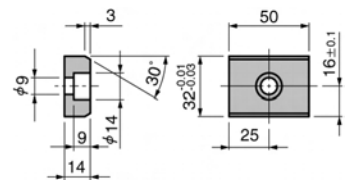
Option

追加编号 Option Code	明细 Specification
SC	安装面可以加长10到60mm (指定10mm单位) The mount surface is extended forward in the range of 10 to 60 mm (at increments of 10mm).
WC	安装面宽度加至100。 The mount width is changed to 100.
N12	驱动块底座销孔改为φ12 Dowel pin holes of cam holder and cam driver are changed to φ12.



Order **KACC80-50-SC30-WC**  
**KACF80-50-SC30-WC**

## 键详图 Key Specification



# KACC80-55 KACF80-55

Technical drawings showing dimensions and components for the KACC80-55 and KACF80-55 cam units. Dimensions are provided in millimeters. Tolerances are specified for dowel pin holes and key grooves. A cam diagram shows the profile and travel characteristics.

■ SC and WC Option

■ Cam Diagram

KACF80弹簧:  
初压: TF25-100  
终压: TH35-60

## 零部件表 Table of Components

代号 No.	名称 Description	数量 Qty	材料和备注 Material and Remark
①	底座 Cam Holder	1	QT450
②	滑动块 Cam Slider	1	QT450
③	弹簧滑座 Spring Guide Block	1	QT450
④	驱动块 Cam Driver	1	QT450
⑤	压板 Slide Plate	2	铜合金 Bronze
⑥	强制拉回A Positive Return Follower A	1	45
⑦	强制拉回B Positive Return Follower B	1	45
⑧	凸V型 Cam Slide Guide	1	铜合金 Bronze
⑨	挡板 Spring Plate	1	45
⑩	弹簧销 Spring Guide Pin	2	45
⑪	安全挡板 Safety Plate	1	45
⑫	键 Key	1	45
⑬	缓冲块 Stopper	2	φ10×10
⑭	螺旋弹簧 Coil Spring	1	TL35-150

行程 Travel S	加工力 Working Force kN(tonf)		弹簧力 Spring Force N(kgf)		总重量 Total Weight kg	代号 Catalog No.	(W)	(θ)	SANKYO 代号对照 Catalog No.
	标准加工力 (100万回) Standard Working Force (one million strokes)	允许加工力 (300万回) Allowable Working Force (300,000 strokes)	初压 Initial Load	终压 Final Load					
87.2	39.2 (4.0)	78.4 (8.0)	271.0 (27.6)	1626.0 (165.6)	21.7	KACC KACF	80	55	UCMSC UCMSF
	54.9 (5.6)	109.8 (11.2)	127.4 (13.0)	3250.0 (331.4)					



Order

Catalog No.	(W) - (θ)
KACC	80 - 55
KACF	80 - 55



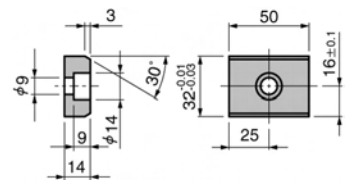
Option

追加编号 Option Code	明细 Specification
SC	安装面可以加长10到60mm(指定10mm单位) The mount surface is extended forward in the range of 10 to 60 mm(at increments of 10mm).
WC	安装面宽度加至100。 The mount width is changed to 100.
N12	驱动块底座销孔改为φ12 Dowel pin holes of cam holder and cam driver are changed to φ12.



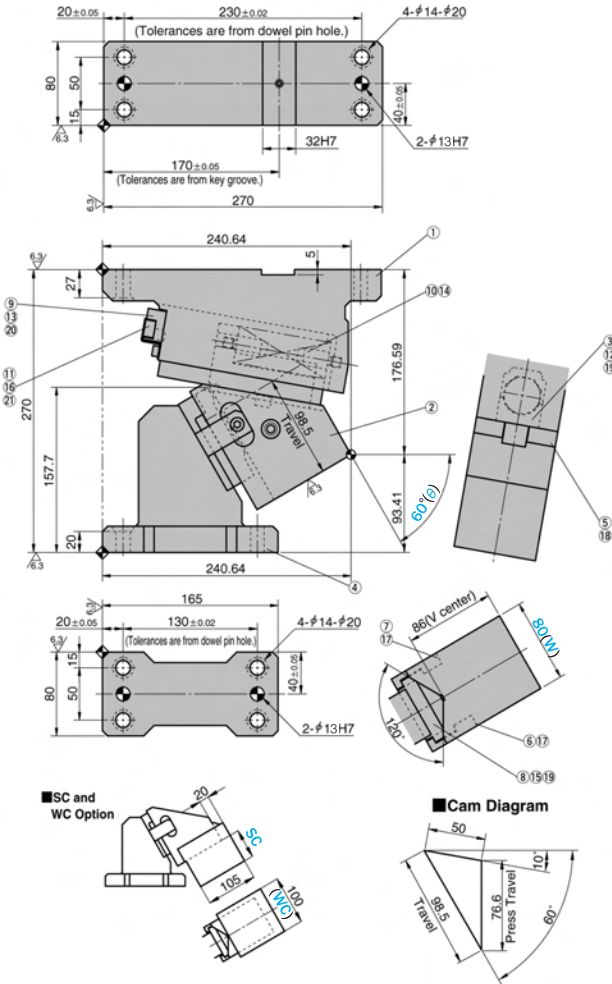
Order **KACC80-55-SC30-WC**  
**KACF80-55-SC30-WC**

## 键详图 Key Specification



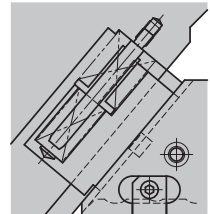
KACC  
KACF  
80

# KACC80-60 KACF80-60



## 零部件表 Table of Components

代号 No.	名称 Description	数量 Qty	材料和备注 Material and Remark
①	底座 Cam Holder	1	QT450
②	滑动块 Cam Slider	1	QT450
③	弹簧滑座 Spring Guide Block	1	QT450
④	驱动块 Cam Driver	1	QT450
⑤	压板 Slide Plate	2	铜合金 Bronze
⑥	强制拉回A Positive Return Follower A	1	45
⑦	强制拉回B Positive Return Follower B	1	45
⑧	凸V型 Cam Slide Guide	1	铜合金 Bronze
⑨	挡板 Spring Plate	1	45
⑩	弹簧销 Spring Guide Pin	2	45
⑪	安全挡板 Safety Plate	1	45
⑫	键 Key	1	45
⑬	缓冲块 Stopper	2	φ10×10
⑭	螺旋弹簧 Coil Spring	1	TL35-150



KACF80弹簧:  
初压: TF25-100  
终压: TH35-60

行程 Travel S	加工力 Working Force kN(tonf)		弹簧力 Spring Force N(kgf)		总重量 Total Weight kg	代号 Catalog No.	(W)	(θ)	SANKYO 代号对照 Catalog No.
	标准加工力 (100万回) Standard Working Force (one million strokes)	允许加工力 (30万回) Allowable Working Force (300,000 strokes)	初压 Initial Load	终压 Final Load					
98.5	39.2 (4.0)	78.4 (8.0)	271.0 (27.6)	1626.0 (165.6)	23.2	KACC	80	60	UCMSC
	54.9 (5.6)	109.8 (11.2)	127.4 (13.0)	3250.0 (331.4)		KACF			UCMSF



Order

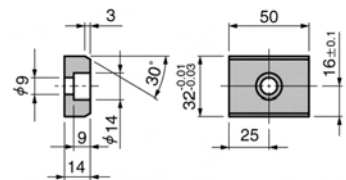
Catalog No.	(W)	(θ)
KACC	80	60
KACF	80	60



Option

追加编号 Option Code	明细 Specification
SC	安装面可以加长10到60mm(指定10mm单位) The mount surface is extended forward in the range of 10 to 60 mm(at increments of 10mm).
WC	安装面宽度加至100。 The mount width is changed to 100.
N12	驱动块底座销孔改为φ12 Dowel pin holes of cam holder and cam driver are changed to φ12.

## 键详图 Key Specification



Order **KACC80-60-SC30-WC**  
**KACF80-60-SC30-WC**



**KACC80-65**  
**KACF80-65**

■ 零部件表  
Table of Components

代号 No.	名称 Description	数量 Qty	材料和备注 Material and Remark
①	底座 Cam Holder	1	QT450
②	滑动块 Cam Slider	1	QT450
③	弹簧滑座 Spring Guide Block	1	QT450
④	驱动块 Cam Driver	1	QT450
⑤	压板 Slide Plate	2	铜合金 Bronze
⑥	强制拉回A Positive Return Follower A	1	45
⑦	强制拉回B Positive Return Follower B	1	45
⑧	凸V型 Cam Slide Guide	1	铜合金 Bronze
⑨	挡板 Spring Plate	1	45
⑩	弹簧销 Spring Guide Pin	2	45
⑪	安全挡板 Safety Plate	1	45
⑫	键 Key	1	45
⑬	缓冲块 Stopper	2	φ10×10
⑭	螺旋弹簧 Coil Spring	1	TL35-125

■ SC and WC Option

■ Cam Diagram

KACF80弹簧:  
初压: TF25-80  
终压: TH35-60

行程 Travel S	加工力 Working Force kN(tonf)		弹簧力 Spring Force N(kgf)		总重量 Total Weight kg	代号 Catalog No.	(W)	(θ)	SANKYO 代号对照 Catalog No.
	标准加工力 (100万回) Standard Working Force (one million strokes)	允许加工力 (30万回) Allowable Working Force (300,000 strokes)	初压 Initial Load	终压 Final Load					
81.6	39.2 (4.0)	78.4 (8.0)	271.0 (27.6)	1626.0 (165.6)	23.7	KACC KACF	80	65	UCMSC UCMSF
	54.9 (5.6)	109.8 (11.2)	98.0 (10.0)	3250.0 (331.4)					



Order

Catalog No. (W) - (θ)  
**KACC 80 - 65**  
**KACF 80 - 65**



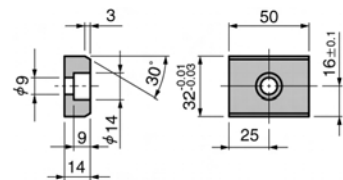
Option

追加编号 Option Code	明细 Specification
SC	安装面可以加长10到60mm(指定10mm单位) The mount surface is extended forward in the range of 10 to 60 mm(at increments of 10mm).
WC	安装面宽度加至100。 The mount width is changed to 100.
N12	驱动块底座销孔改为φ12 Dowel pin holes of cam holder and cam driver are changed to φ12.



Order **KACC80-65-SC30-WC**  
**KACF80-65-SC30-WC**

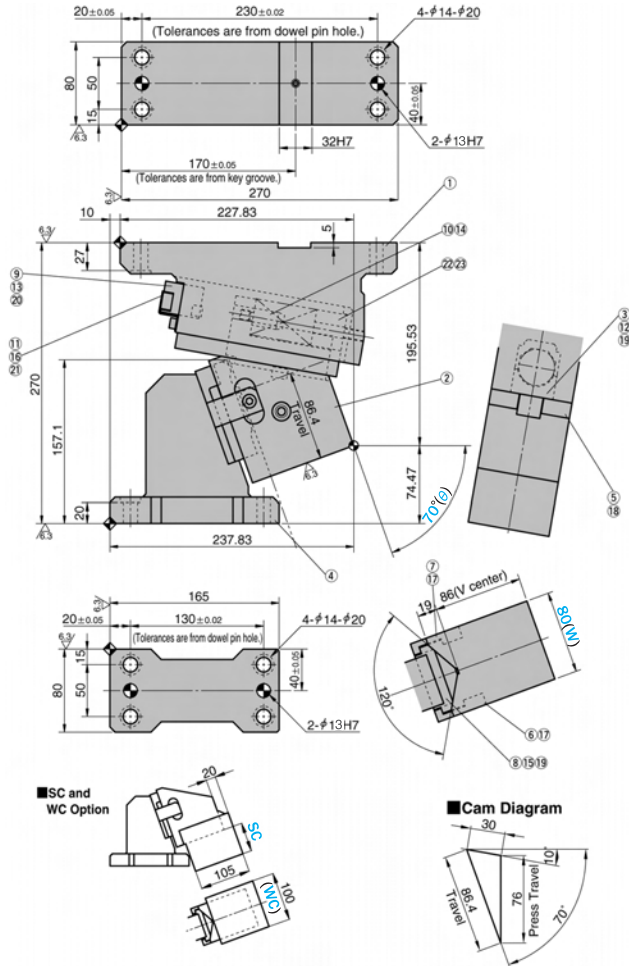
■ 键详图 Key Specification



KACC  
KACF  
80

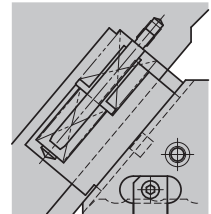


# KACC80-70 KACF80-70



## 零部件表 Table of Components

代号 No.	名称 Description	数量 Qty	材料和备注 Material and Remark
①	底座 Cam Holder	1	QT450
②	滑动块 Cam Slider	1	QT450
③	弹簧滑座 Spring Guide Block	1	QT450
④	驱动块 Cam Driver	1	QT450
⑤	压板 Slide Plate	2	铜合金 Bronze
⑥	强制拉回A Positive Return Follower A	1	45
⑦	强制拉回B Positive Return Follower B	1	45
⑧	凸V型 Cam Slide Guide	1	铜合金 Bronze
⑨	挡板 Spring Plate	1	45
⑩	弹簧销 Spring Guide Pin	2	45
⑪	安全挡板 Safety Plate	1	45
⑫	键 Key	1	45
⑬	缓冲块 Stopper	2	φ10×10
⑭	螺旋弹簧 Coil Spring	1	TL35-100



KACF80弹簧:  
初压: TF25-80  
终压: TH35-80

行程 Travel S	加工力 Working Force kN(tonf)		弹簧力 Spring Force N(kgf)		总重量 Total Weight kg	代号 Catalog No.	(W)	(θ)	SANKYO 代号对照 Catalog No.
	标准加工力 (100万回) Standard Working Force (one million strokes)	允许加工力 (30万回) Allowable Working Force (300,000 strokes)	初压 Initial Load	终压 Final Load					
86.4	39.2 (4.0)	78.4 (8.0)	271.0 (27.6)	1626.0 (165.6)	23.9	KACC	80	70	UCMSC
	54.9 (5.6)	109.8 (11.2)	159.3 (16.3)	3250.0 (331.4)		KACF			UCMSF



Order

Catalog No. (W) - (θ)  
KACC 80 - 70  
KACF 80 - 70



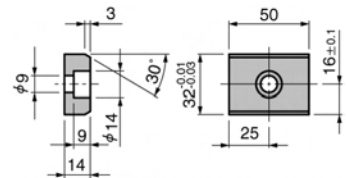
Option

追加编号 Option Code	明细 Specification
SC	安装面可以加长10到60mm(指定10mm单位) The mount surface is extended forward in the range of 10 to 60 mm(at increments of 10mm).
WC	安装面宽度加至100。 The mount width is changed to 100.
N12	驱动块底座销孔改为φ12 Dowel pin holes of cam holder and cam driver are changed to φ12.



Order KACC80-70-SC30-WC  
KACF80-70-SC30-WC

## 键详图 Key Specification





**KACC150-05**  
**KACF150-05**

**■ 零部件表 Table of Components**

代号 No.	名称 Description	数量 Qty	材料和备注 Material and Remark
①	驱动块 Cam Driver	1	HT300
②	滑动块 Cam Slider	1	HT300
③	底座 Cam Holder	1	HT300
④	压板 Slide Plate	2	铜合金 Bronze
⑤	弹簧销 Spring Guide Pin	1	45
⑥	挡板 Spring Plate	1	45
⑦	弹簧滑座 Spring Guide Block	1	QT450
⑧	强制拉回 Positive Return Follower	2	45
⑨	凸V型 Cam Slide Guide	1	铜合金 Bronze
⑩	键 Key	1	45
⑪	安全挡板 Safety Plate	1	SS400
⑫	缓冲块 Urethane Stopper	2	聚胺脂 Urethane
⑬	螺旋弹簧 Coil Spring	1	TL60-150

**■ Cam Diagram**

KACF150弹簧:  
初压: TF40-90  
终压: TH60-60

行程 Travel S	加工力 Working Force kN(tonf)		弹簧力 Spring Force N(kgf)		总重量 Total Weight kg	代号 Catalog No.	(W)	(θ)	SANKYO 代号对照 Catalog No.
	标准加工力 (100万回) Standard Working Force (one million strokes)	允许加工力 (30万回) Allowable Working Force (300,000 strokes)	初压 Initial Load	终压 Final Load					
32.3	88.2 (9.0)	132.3 (13.5)	635.2 (64.8)	4605.2 (469.8)	45.9	KACC	150	05	UCMSC
	123.5 (12.6)	185.2 (18.9)	222.8 (22.7)	9540.0 (973.4)		KACF			UCMSF



Order

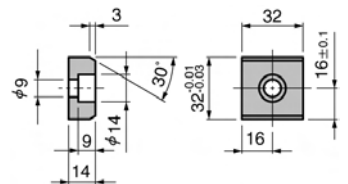
Catalog No. (W) - (θ)  
**KACC 150 - 05**  
**KACF 150 - 05**



Option

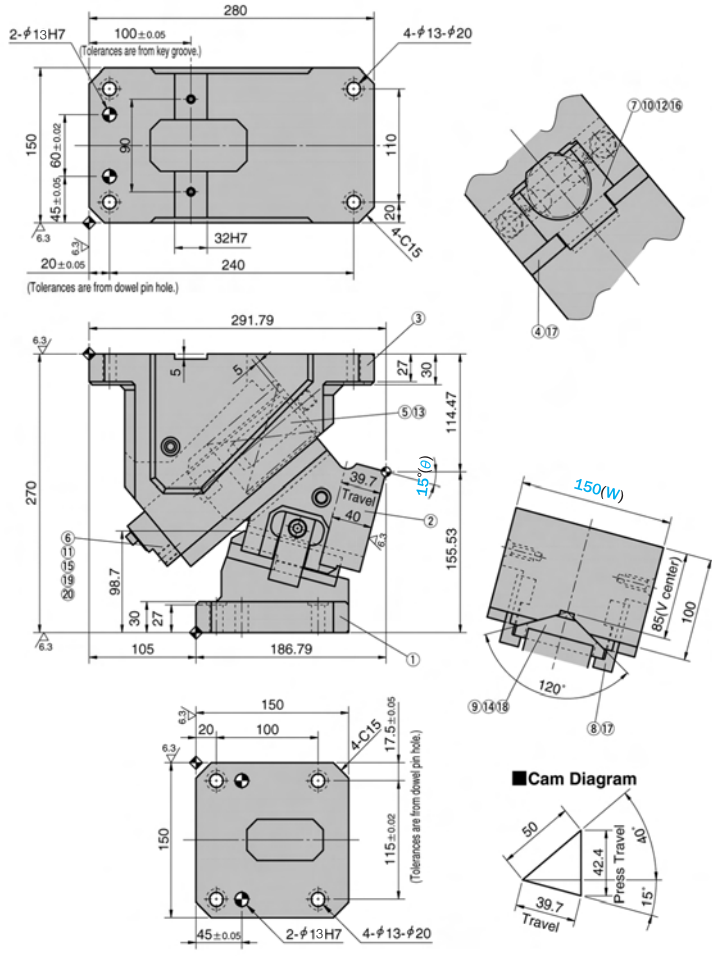
追加编号 Option Code	明细 Specification
N12	驱动块底座销孔改为φ12 Dowel pin holes of cam holder and cam driver are changed to φ12.

**■ 键详图 Key Specification**



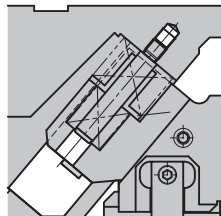


# KACC150-15 KACF150-15



## 零部件表 Table of Components

代号 No.	名称 Description	数量 Qty	材料和备注 Material and Remark
①	驱动块 Cam Driver	1	HT300
②	滑动块 Cam Slider	1	HT300
③	底座 Cam Holder	1	HT300
④	压板 Slide Plate	2	铜合金 Bronze
⑤	弹簧销 Spring Guide Pin	1	45
⑥	挡板 Spring Plate	1	45
⑦	弹簧滑座 Spring Guide Block	1	QT450
⑧	强制拉回 Positive Return Follower	2	45
⑨	凸V型 Cam Slide Guide	1	铜合金 Bronze
⑩	键 Key	1	45
⑪	安全挡板 Safety Plate	1	SS400
⑫	缓冲块 Urethane Stopper	2	聚胺脂 Urethane
⑬	螺旋弹簧 Coil Spring	1	TL60-150



KACF150弹簧:  
初压: TF40-90  
终压: TH60-60

行程 Travel S	加工力 Working Force kN(tonf)		弹簧力 Spring Force N(kgf)		总重量 Total Weight kg	代号 Catalog No.	(W)	(θ)	SANKYO 代号对照 Catalog No.
	标准加工力 (100万回) Standard Working Force (one million strokes)	允许加工力 (30万回) Allowable Working Force (300,000 strokes)	初压 Initial Load	终压 Final Load					
39.7	88.2 (9.0)	132.3 (13.5)	635.2 (64.8)	4605.2 (469.8)	44.9	KACC	150	15	UCMSC
	123.5 (12.6)	185.2 (18.9)	222.8 (22.7)	9540.0 (973.4)		KACF			UCMSF



Order

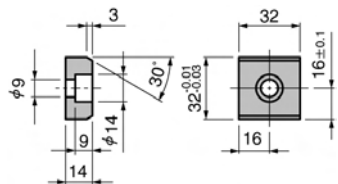
Catalog No. (W) - (θ)  
**KACC 150 - 15**  
**KACF 150 - 15**



Option

追加编号 Option Code	明细 Specification
N12	驱动块底座销孔改为φ12 Dowel pin holes of cam holder and cam driver are changed to φ12.

## 键详图 Key Specification





**KACC150-20**  
**KACF150-20**

**Cam Diagram**

50  
40.8  
46.1  
Travel  
90°  
20°

**零部件表**  
Table of Components

代号 No.	名称 Description	数量 Qty	材料和备注 Material and Remark
①	驱动块 Cam Driver	1	HT300
②	滑动块 Cam Slider	1	HT300
③	底座 Cam Holder	1	HT300
④	压板 Slide Plate	2	铜合金 Bronze
⑤	弹簧销 Spring Guide Pin	1	45
⑥	挡板 Spring Plate	1	45
⑦	弹簧滑座 Spring Guide Block	1	QT450
⑧	强制拉回 Positive Return Follower	2	45
⑨	凸V型 Cam Slide Guide	1	铜合金 Bronze
⑩	键 Key	1	45
⑪	安全挡板 Safety Plate	1	SS400
⑫	缓冲块 Urethane Stopper	2	聚胺脂 Urethane
⑬	螺旋弹簧 Coil Spring	1	TL60-150

KACC150弹簧:  
初压: TF40-90  
终压: TH60-60

行程 Travel S	加工力 Working Force kN(tonf)		弹簧力 Spring Force N(kgf)		总重量 Total Weight kg	代号 Catalog No.	(W)	(θ)	SANKYO 代号对照 Catalog No.
	标准加工力 (100万回) Standard Working Force (one million strokes)	允许加工力 (30万回) Allowable Working Force (300,000 strokes)	初压 Initial Load	终压 Final Load					
46.1	88.2 (9.0)	132.3 (13.5)	635.2 (64.8)	4605.2 (469.8)	43.2	KACC	150	20	UCMSC
	123.5 (12.6)	185.2 (18.9)	222.8 (22.7)	9540.0 (973.4)		KACF			UCMSF



Order

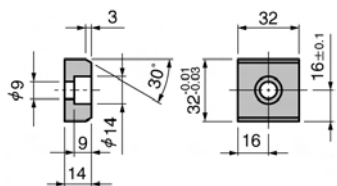
Catalog No. (W) - (θ)  
**KACC 150 - 20**  
**KACF 150 - 20**



Option

追加编号 Option Code	明细 Specification
N12	驱动块底座销孔改为φ12 Dowel pin holes of cam holder and cam driver are changed to φ12.

**键详图 Key Specification**



KACC  
KACF  
150



# KACC150-25 KACF150-25

Technical drawings showing dimensions for the cam unit. Key dimensions include: 280, 135±0.05, 4-φ13-φ20, 150, 60±0.02, 90, 110, 20, 45±0.05, 6.3, 20±0.05, 32H7, 4C15, 240, 291.02, 270, 103.2, 6.3, 30, 27, 5, 5, 13, 135.08, 50, 47.8 Travel, 40, 6.3, 2, 134.92, 25°(θ), 150(W), 100, 185V center, 120°, 9)14)18, 8)17, 150, 20, 100, 4C15, 17.5±0.05, 115±0.02, 150, 45±0.05, 2-φ13H7, 4-φ13-φ20. Tolerances are from key groove and dowel pin hole.

■ Cam Diagram

Cam Diagram showing Press Travel (45.2) and Travel (47.8) with a 25° angle.

■ 零部件表  
Table of Components

代号 No.	名称 Description	数量 Qty	材料和备注 Material and Remark
①	驱动块 Cam Driver	1	HT300
②	滑动块 Cam Slider	1	HT300
③	底座 Cam Holder	1	HT300
④	压板 Slide Plate	2	铜合金 Bronze
⑤	弹簧销 Spring Guide Pin	1	45
⑥	挡板 Spring Plate	1	45
⑦	弹簧滑座 Spring Guide Block	1	QT450
⑧	强制拉回 Positive Return Follower	2	45
⑨	凸V型 Cam Slide Guide	1	铜合金 Bronze
⑩	键 Key	1	45
⑪	安全挡板 Safety Plate	1	SS400
⑫	缓冲块 Urethane Stopper	2	聚胺脂 Urethane
⑬	螺旋弹簧 Coil Spring	1	TL60-150

KACF150弹簧:  
初压: TF40-90  
终压: TH60-60

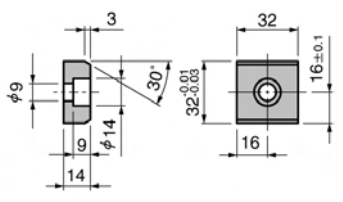
行程 Travel S	加工力 Working Force kN(tonf)		弹簧力 Spring Force N(kgf)		总重量 Total Weight kg	代号 Catalog No.	(W)	(θ)	SANKYO 代号对照 Catalog No.
	标准加工力 (100万回) Standard Working Force (one million strokes)	允许加工力 (30万回) Allowable Working Force (300,000 strokes)	初压 Initial Load	终压 Final Load					
47.8	88.2 (9.0)	132.3 (13.5)	635.2 (64.8)	4605.2 (469.8)	43.7	KACC	150	25	UCMSC
	123.5 (12.6)	185.2 (18.9)	222.8 (22.7)	9540.0 (973.4)		KACF			UCMSF

Order

Option

Catalog No.	(W) - (θ)
KACC	150 - 25
KACF	150 - 25
追加编号 Option Code	明细 Specification
N12	驱动块底座销孔改为φ12 Dowel pin holes of cam holder and cam driver are changed to φ12.

■ 键详图 Key Specification



**KACC150-30**  
**KACF150-30**

**Cam Diagram**

50  
Travel  
54.3  
Press Travel  
44.2  
30°  
20°

**零部件表**  
Table of Components

代号 No.	名称 Description	数量 Qty	材料和备注 Material and Remark
①	驱动块 Cam Driver	1	HT300
②	滑动块 Cam Slider	1	HT300
③	底座 Cam Holder	1	HT300
④	压板 Slide Plate	2	铜合金 Bronze
⑤	弹簧销 Spring Guide Pin	1	45
⑥	挡板 Spring Plate	1	45
⑦	弹簧滑座 Spring Guide Block	1	QT450
⑧	强制拉回 Positive Return Follower	2	45
⑨	凸V型 Cam Slide Guide	1	铜合金 Bronze
⑩	键 Key	1	45
⑪	安全挡板 Safety Plate	1	SS400
⑫	缓冲块 Urethane Stopper	2	聚胺脂 Urethane
⑬	螺旋弹簧 Coil Spring	1	TL60-150

KACF150弹簧:  
初压: TF40-90  
终压: TH60-60

行程 Travel S	加工力 Working Force kN(tonf)		弹簧力 Spring Force N(kgf)		总重量 Total Weight kg	代号 Catalog No.	(W)	(θ)	SANKYO 代号对照 Catalog No.
	标准加工力 (100万回) Standard Working Force (one million strokes)	允许加工力 (30万回) Allowable Working Force (300,000 strokes)	初压 Initial Load	终压 Final Load					
54.3	88.2 (9.0)	132.3 (13.5)	635.2 (64.8)	4605.2 (469.8)	42.2	KACC	150	30	UCMSC
	123.5 (12.6)	185.2 (18.9)	222.8 (22.7)	9540.0 (973.4)		KACF			UCMSF



Order

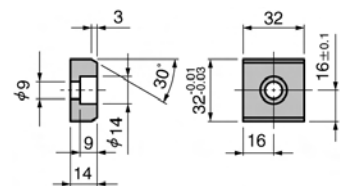
Catalog No. (W) - (θ)  
**KACC 150 - 30**  
**KACF 150 - 30**



Option

追加编号 Option Code	明细 Specification
N12	驱动块底座销孔改为φ12 Dowel pin holes of cam holder and cam driver are changed to φ12.

**键详图 Key Specification**



KACC  
KACF  
150

# KACC150-35 KACF150-35

Technical drawings showing dimensions for the cam driver, cam slider, cam holder, and spring guide block. Key dimensions include 280, 135±0.05, 4-φ13-φ20, 150, 110, 20, 240, 32H7, 4-C15, 270, 285.66, 151.91, 118.09, 215.66, 150, 100, 17.5±0.05, 115±0.02, 45±0.05, 2-φ13H7, 4-φ13-φ20, 150(W), 100, 120°, 85(V center), 100.

**Cam Diagram**

Cam Diagram showing dimensions: 50, 57.4, 50, 20, Press Travel, 35° Travel.

**零部件表 Table of Components**

代号 No.	名称 Description	数量 Qty	材料和备注 Material and Remark
①	驱动块 Cam Driver	1	HT300
②	滑动块 Cam Slider	1	HT300
③	底座 Cam Holder	1	HT300
④	压板 Slide Plate	2	铜合金 Bronze
⑤	弹簧销 Spring Guide Pin	1	45
⑥	挡板 Spring Plate	1	45
⑦	弹簧滑座 Spring Guide Block	1	QT450
⑧	强制拉回 Positive Return Follower	2	45
⑨	凸V型 Cam Slide Guide	1	铜合金 Bronze
⑩	键 Key	1	45
⑪	安全挡板 Safety Plate	1	SS400
⑫	缓冲块 Urethane Stopper	2	聚胺脂 Urethane
⑬	螺旋弹簧 Coil Spring	1	TL60-150

KACF150弹簧:  
初压: TF40-90  
终压: TH60-60

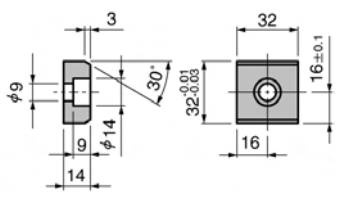
行程 Travel S	加工力 Working Force kN(tonf)		弹簧力 Spring Force N(kgf)		总重量 Total Weight kg	代号 Catalog No.	(W)	(θ)	SANKYO 代号对照 Catalog No.
	标准加工力 (100万回) Standard Working Force (one million strokes)	允许加工力 (30万回) Allowable Working Force (300,000 strokes)	初压 Initial Load	终压 Final Load					
57.4	88.2 (9.0)	132.3 (13.5)	635.2 (64.8)	4605.2 (469.8)	42.7	KACC	150	35	UCMSC
	123.5 (12.6)	185.2 (18.9)	222.8 (22.7)	9540.0 (973.4)		KACF			UCMSF

Order

Option

Catalog No.	(W) - (θ)
KACC	150 - 35
KACF	150 - 35
追加编号 Option Code	明细 Specification
N12	驱动块底座销孔改为φ12 Dowel pin holes of cam holder and cam driver are changed to φ12.

**键详图 Key Specification**



**KACC150-40**  
**KACF150-40**

■ **Cam Diagram**

64.3 Travel  
50 Press Travel  
40° Travel

2-φ13H7  
170±0.05  
4-φ13-φ20  
150  
60±0.05  
80  
110  
20  
20±0.05  
240  
32H7  
4-C15

(Tolerances are from key groove.)  
(Tolerances are from dowel pin hole.)

276.20  
3  
5  
27  
30  
155.53  
513  
64.3 travel  
40  
63  
40°(θ)  
114.47  
270  
121.9  
30  
27  
45  
231.20  
150  
20  
100  
17.5±0.05  
4-C15  
115±0.02  
150  
45±0.05  
2-φ13H7  
4-φ13-φ20

(Tolerances are from dowel pin hole.)

150(W)  
100  
120°  
85-V center

13  
7101216  
417

13  
KACF150弹簧:  
初压: TF40-90  
终压: TH60-60

■ **零部件表**  
**Table of Components**

代号 No.	名称 Description	数量 Qty	材料和备注 Material and Remark
①	驱动块 Cam Driver	1	HT300
②	滑动块 Cam Slider	1	HT300
③	底座 Cam Holder	1	HT300
④	压板 Slide Plate	2	铜合金 Bronze
⑤	弹簧销 Spring Guide Pin	1	45
⑥	挡板 Spring Plate	1	45
⑦	弹簧滑座 Spring Guide Block	1	QT450
⑧	强制拉回 Positive Return Follower	2	45
⑨	凸V型 Cam Slide Guide	1	铜合金 Bronze
⑩	键 Key	1	45
⑪	安全挡板 Safety Plate	1	SS400
⑫	缓冲块 Urethane Stopper	2	聚氨酯 Urethane
⑬	螺旋弹簧 Coil Spring	1	TL60-150

行程 Travel S	加工力 Working Force kN(tonf)		弹簧力 Spring Force N(kgf)		总重量 Total Weight kg	代号 Catalog No.	(W)	(θ)	SANKYO 代号对照 Catalog No.
	标准加工力 (100万回) Standard Working Force (one million strokes)	允许加工力 (30万回) Allowable Working Force (300,000 strokes)	初压 Initial Load	终压 Final Load					
64.3	88.2 (9.0)	132.3 (13.5)	635.2 (64.8)	4605.2 (469.8)	41.0	KACC	150	40	UCMSC
	123.5 (12.6)	185.2 (18.9)	222.8 (22.7)	9540.0 (973.4)		KACF			UCMSF



Order

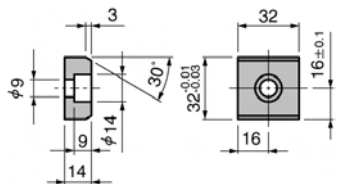
Catalog No. (W) - (θ)  
**KACC 150 - 40**  
**KACF 150 - 40**



Option

追加编号 Option Code	明细 Specification
N12	驱动块底座销孔改为φ12 Dowel pin holes of cam holder and cam driver are changed to φ12.

■ **键详图 Key Specification**



KACC  
KACF  
150

# KACC150-45 KACF150-45

Technical drawings showing dimensions for the cam driver, cam slider, cam holder, and slide plate. Key dimensions include 280, 170±0.05, 150, 110, 240, 270, 230.56, 150, 100, 45, 20, 10, 17.5±0.02, 115±0.02, 45±0.05, 2-φ13H7, 4-φ13-φ20, 4-C15, 17.5±0.02, 115±0.02, 45±0.05, 2-φ13H7, 4-φ13-φ20, 4-C15.

### Cam Diagram

Cam Diagram showing 50 Travel, 69.6 Travel, 57.9 Press Travel, and 45° angle.

### 零部件表 Table of Components

代号 No.	名称 Description	数量 Qty	材料和备注 Material and Remark
①	驱动块 Cam Driver	1	HT300
②	滑动块 Cam Slider	1	HT300
③	底座 Cam Holder	1	HT300
④	压板 Slide Plate	2	铜合金 Bronze
⑤	弹簧销 Spring Guide Pin	1	45
⑥	挡板 Spring Plate	1	45
⑦	弹簧滑座 Spring Guide Block	1	QT450
⑧	强制拉回 Positive Return Follower	2	45
⑨	凸V型 Cam Slide Guide	1	铜合金 Bronze
⑩	键 Key	1	45
⑪	安全挡板 Safety Plate	1	SS400
⑫	缓冲块 Urethane Stopper	2	聚胺脂 Urethane
⑬	螺旋弹簧 Coil Spring	1	TL60-150

KACF150弹簧:  
初压: TF40-90  
终压: TH60-60

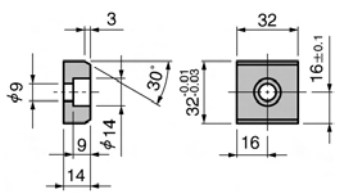
行程 Travel S	加工力 Working Force kN(tonf)		弹簧力 Spring Force N(kgf)		总重量 Total Weight kg	代号 Catalog No.	(W)	(θ)	SANKYO 代号对照 Catalog No.
	标准加工力 (100万回) Standard Working Force (one million strokes)	允许加工力 (30万回) Allowable Working Force (300,000 strokes)	初压 Initial Load	终压 Final Load					
69.6	88.2 (9.0)	132.3 (13.5)	635.2 (64.8)	4605.2 (469.8)	41.4	KACC	150	45	UCMSC
	123.5 (12.6)	185.2 (18.9)	222.8 (22.7)	9540.0 (973.4)		KACF			UCMSF

Order

Option

Catalog No.	(W) - (θ)
KACC	150 - 45
KACF	150 - 45
追加编号 Option Code	明细 Specification
N12	驱动块底座销孔改为φ12 Dowel pin holes of cam holder and cam driver are changed to φ12.

### 键详图 Key Specification





**KACC150-50**  
**KACF150-50**

**Cam Diagram**

77.8 Travel  
50  
59.6 Press Travel  
30°

**零部件表**  
Table of Components

代号 No.	名称 Description	数量 Qty	材料和备注 Material and Remark
①	驱动块 Cam Driver	1	HT300
②	滑动块 Cam Slider	1	HT300
③	底座 Cam Holder	1	HT300
④	压板 Slide Plate	2	铜合金 Bronze
⑤	弹簧销 Spring Guide Pin	1	45
⑥	挡板 Spring Plate	1	45
⑦	弹簧滑座 Spring Guide Block	1	QT450
⑧	强制拉回 Positive Return Follower	2	45
⑨	凸V型 Cam Slide Guide	1	铜合金 Bronze
⑩	键 Key	1	45
⑪	安全挡板 Safety Plate	1	SS400
⑫	缓冲块 Urethane Stopper	2	聚氨酯 Urethane
⑬	螺旋弹簧 Coil Spring	1	TL60-150

KACC150弹簧:  
初压: TF40-90  
终压: TH60-60

行程 Travel S	加工力 Working Force kN(tonf)		弹簧力 Spring Force N(kgf)		总重量 Total Weight kg	代号 Catalog No.	(W)	(θ)	SANKYO 代号对照 Catalog No.
	标准加工力 (100万回) Standard Working Force (one million strokes)	允许加工力 (30万回) Allowable Working Force (300,000 strokes)	初压 Initial Load	终压 Final Load					
77.8	88.2 (9.0)	132.3 (13.5)	635.2 (64.8)	4605.2 (469.8)	40.5	KACC KACF	150	50	UCMSC
	123.5 (12.6)	185.2 (18.9)	222.8 (22.7)	9540.0 (973.4)					UCMSF



Order

Catalog No. (W) - (θ)

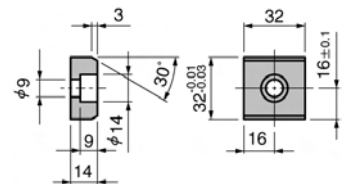
**KACC** 150 - 50  
**KACF** 150 - 50



Option

追加编号 Option Code	明细 Specification
N12	驱动块底座销孔改为φ12 Dowel pin holes of cam holder and cam driver are changed to φ12.

**键详图 Key Specification**



KACC  
KACF  
150



**KACC150-55**  
**KACF150-55**

**Cam Diagram**

50  
87.2  
71.4  
Press Travel  
55

**零部件表**  
**Table of Components**

代号 No.	名称 Description	数量 Qty	材料和备注 Material and Remark
①	驱动块 Cam Driver	1	HT300
②	滑动块 Cam Slider	1	HT300
③	底座 Cam Holder	1	HT300
④	压板 Slide Plate	2	铜合金 Bronze
⑤	弹簧销 Spring Guide Pin	1	45
⑥	挡板 Spring Plate	1	45
⑦	弹簧滑座 Spring Guide Block	1	QT450
⑧	强制拉回 Positive Return Follower	2	45
⑨	凸V型 Cam Slide Guide	1	铜合金 Bronze
⑩	键 Key	1	45
⑪	安全挡板 Safety Plate	1	SS400
⑫	缓冲块 Urethane Stopper	2	聚胺脂 Urethane
⑬	螺旋弹簧 Coil Spring	1	TL60-150

KACF150弹簧:  
初压: TF40-90  
终压: TH60-60

行程 Travel S	加工力 Working Force kN(tonf)		弹簧力 Spring Force N(kgf)		总重量 Total Weight kg	代号 Catalog No.	(W)	(θ)	SANKYO 代号对照 Catalog No.
	标准加工力 (100万回) Standard Working Force (one million strokes)	允许加工力 (30万回) Allowable Working Force (300,000 strokes)	初压 Initial Load	终压 Final Load					
87.2	88.2 (9.0)	132.3 (13.5)	635.2 (64.8)	4605.2 (469.8)	40.9	KACC	150	55	UCMSC
	123.5 (12.6)	185.2 (18.9)	222.8 (22.7)	9540.0 (973.4)		KACF			UCMSF



Order

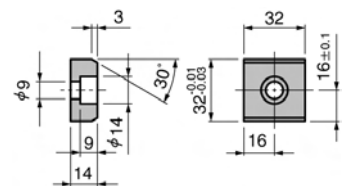
Catalog No. (W) - (θ)  
**KACC 150 - 55**  
**KACF 150 - 55**



Option

追加编号 Option Code	明细 Specification
N12	驱动块底座销孔改为φ12 Dowel pin holes of cam holder and cam driver are changed to φ12.

**键详图 Key Specification**



**KACC150-60**  
**KACF150-60**

**Cam Diagram**

50  
98.5  
76.6  
Press Travel  
80°  
10

**零部件表**  
Table of Components

代号 No.	名称 Description	数量 Qty	材料和备注 Material and Remark
①	驱动块 Cam Driver	1	HT300
②	滑动块 Cam Slider	1	HT300
③	底座 Cam Holder	1	HT300
④	压板 Slide Plate	2	铜合金 Bronze
⑤	弹簧销 Spring Guide Pin	1	45
⑥	挡板 Spring Plate	1	45
⑦	弹簧滑座 Spring Guide Block	1	QT450
⑧	强制拉回 Positive Return Follower	2	45
⑨	凸V型 Cam Slide Guide	1	铜合金 Bronze
⑩	键 Key	1	45
⑪	安全挡板 Safety Plate	1	SS400
⑫	缓冲块 Urethane Stopper	2	聚胺脂 Urethane
⑬	螺旋弹簧 Coil Spring	1	TL60-150

KACF150弹簧:  
初压: TF40-90  
终压: TH60-60

行程 Travel S	加工力 Working Force kN(tonf)		弹簧力 Spring Force N(kgf)		总重量 Total Weight kg	代号 Catalog No.	(W)	(θ)	SANKYO 代号对照 Catalog No.
	标准加工力 (100万回) Standard Working Force (one million strokes)	允许加工力 (30万回) Allowable Working Force (300,000 strokes)	初压 Initial Load	终压 Final Load					
98.5	88.2 (9.0)	132.3 (13.5)	635.2 (64.8)	4605.2 (469.8)	41.5	KACC KACF	150	60	UCMSC
	123.5 (12.6)	185.2 (18.9)	222.8 (22.7)	9540.0 (973.4)					UCMSF



Order

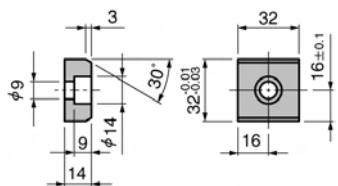
Catalog No. (W) - (θ)  
**KACC 150 - 60**  
**KACF 150 - 60**



Option

追加编号 Option Code	明细 Specification
N12	驱动块底座销孔改为φ12 Dowel pin holes of cam holder and cam driver are changed to φ12.

**键详图 Key Specification**



KACC  
KACF  
150

# KACC150-65 KACF150-65

2-φ13H7 (Tolerances are from key groove.)  
170±0.05  
4-φ13-φ20  
150  
45±0.05, 60±0.02  
90  
110  
20  
32H7  
4C15  
20±0.05 (Tolerances are from dowel pin hole.)  
240  
241.35  
270  
27  
30  
206.49  
138.6  
30  
27  
241.35  
150  
20  
100  
17.5±0.05  
115±0.02 (Tolerances are from dowel pin hole.)  
45±0.05  
2-φ13H7  
4-φ13-φ20  
150(W)  
100  
85(V center)  
100  
100  
100  
100

■Cam Diagram

40  
93.2  
77.5  
Press Travel  
50°  
10°

■ 零部件表  
Table of Components

代号 No.	名称 Description	数量 Qty	材料和备注 Material and Remark
①	驱动块 Cam Driver	1	HT300
②	滑动块 Cam Slider	1	HT300
③	底座 Cam Holder	1	HT300
④	压板 Slide Plate	2	铜合金 Bronze
⑤	弹簧销 Spring Guide Pin	1	45
⑥	挡板 Spring Plate	1	45
⑦	弹簧滑座 Spring Guide Block	1	QT450
⑧	强制拉回 Positive Return Follower	2	45
⑨	凸V型 Cam Slide Guide	1	铜合金 Bronze
⑩	键 Key	1	45
⑪	安全挡板 Safety Plate	1	SS400
⑫	缓冲块 Urethane Stopper	2	聚胺脂 Urethane
⑬	螺旋弹簧 Coil Spring	1	TL60-150

KACF150弹簧:  
初压: TF40-90  
终压: TH60-60

行程 Travel S	加工力 Working Force kN(tonf)		弹簧力 Spring Force N(kgf)		总重量 Total Weight kg	代号 Catalog No.	(W)	(θ)	SANKYO 代号对照 Catalog No.
	标准加工力 (100万回) Standard Working Force (one million strokes)	允许加工力 (30万回) Allowable Working Force (300,000 strokes)	初压 Initial Load	终压 Final Load					
93.2	88.2 (9.0)	132.3 (13.5)	635.2 (64.8)	4605.2 (469.8)	42.2	KACC	150	65	UCMSC
	123.5 (12.6)	185.2 (18.9)	501.3 (51.2)	9540.0 (973.4)		KACF			UCMSF

Order

Option

Catalog No.	(W) - (θ)
KACC	150 - 65
KACF	150 - 65
追加编号 Option Code	明细 Specification
N12	驱动块底座销孔改为φ12 Dowel pin holes of cam holder and cam driver are changed to φ12.

■ 键详图 Key Specification

