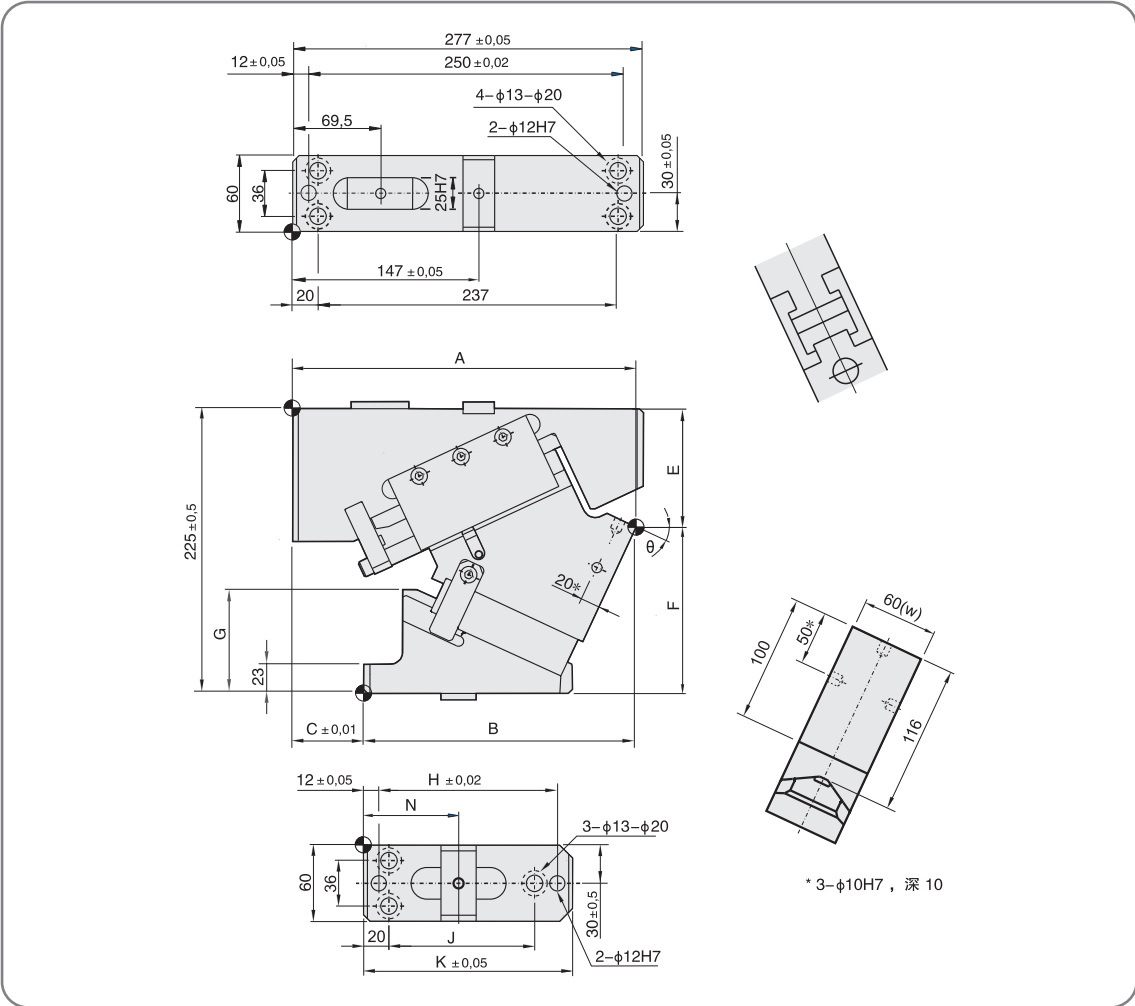
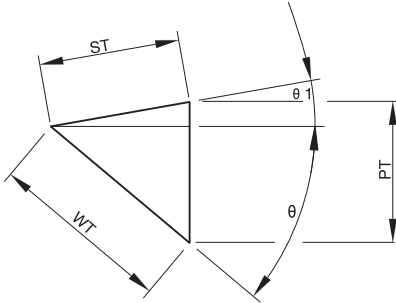


KACVG 060



Catalog No.	A	B	C	E	F	G	H	J	K	N	重量 Weight Kg
KACVG060-00	267.0	167.0	100.0	69.0	156.0	38.0	141	115	165	75	20.8
KACVG060-05	274.4	179.4	95.0	73.1	151.9	46.5					20.5
KACVG060-10	272.0	186.0	86.0	77.6	147.4	55.0					19.7
KACVG060-15	273.7	196.7	77.0	82.4	142.6	62.0					19.3
KACVG060-20	273.5	204.5	69.0	88.7	136.3	71.0					18.9
KACVG060-25	271.3	215.3	56.0	93.5	131.5	82.0					18.8
KACVG060-30	270.0	222.0	48.0	98.6	126.4	96.5	121	95	145	65	18.4
KACVG060-35	266.8	217.8	49.0	105.2	119.8	101.0					17.7
KACVG060-40	262.5	223.5	39.0	112.1	112.9	108.0					17.5
KACVG060-45	256.1	225.1	31.0	126.5	98.5	110.0					17.6
KACVG060-50	249.8	226.8	23.0	134.8	90.2	113.0					17.5
KACVG060-55	247.4	231.4	16.0	141.9	83.1	112.0					17.6
KACVG060-60	238.0	233.0	5.0	149.4	75.6	120.0	106	80	130	58	17.9
KACVG060-65	235.0	240.0	-5.0	163.7	61.3	120.0					18.6
KACVG060-70	230.0	245.0	-15.0	178.0	47.0	120.0					18.8
KACVG060-75	222.0	247.0	-25.0	187.7	37.3	135.0					19.7

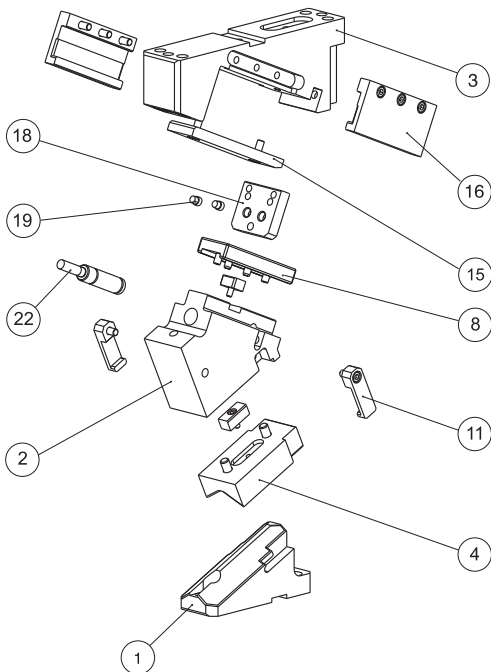
● Cam Digram



θ	$\theta 1$	WT	ST	PT
0°	50°	19.3	30	23.0
5°	45°	21.3		23.1
10°	40°	23.3		23.3
15°	35°	25.4		23.8
20°	30°	27.6		24.5
25°	25°	30.0		25.4
30°	20°	32.6		26.5
35°	15°	35.4		28.1
40°	10°	38.6		30.0
45°	5°	42.3		32.5
50°	0°	46.7		35.8
55°		52.3		42.8
60°		60.0		52.0
65°		71.0		64.3
70°		58.5	55.0	
75°	77.3	20	74.6	

Catalog No.	加工力 Working Force N
KACVG060-00	2225
KACVG060-05	2212
KACVG060-10	2199
KACVG060-15	2184
KACVG060-20	2169
KACVG060-25	2154
KACVG060-30	2138
KACVG060-35	2121
KACVG060-40	2105
KACVG060-45	2089
KACVG060-50	2322
KACVG060-55	2664
KACVG060-60	3148
KACVG060-65	3890
KACVG060-70	5141
KACVG060-75	4426

规格 Type	θ	弹簧力 Spring Force N		氮气缸 Gas Spring
		初压 Initial Load	终压 Final Load	
GK	00° - 65°	900	1200	X170-038-TD (Kaller)
	70° - 75°		1300	X170-025-TD (Kaller)
GD	00° - 65°	890	1140	U0175.038 (Dadco)
	70° - 75°			U0175.025 (Dadco)



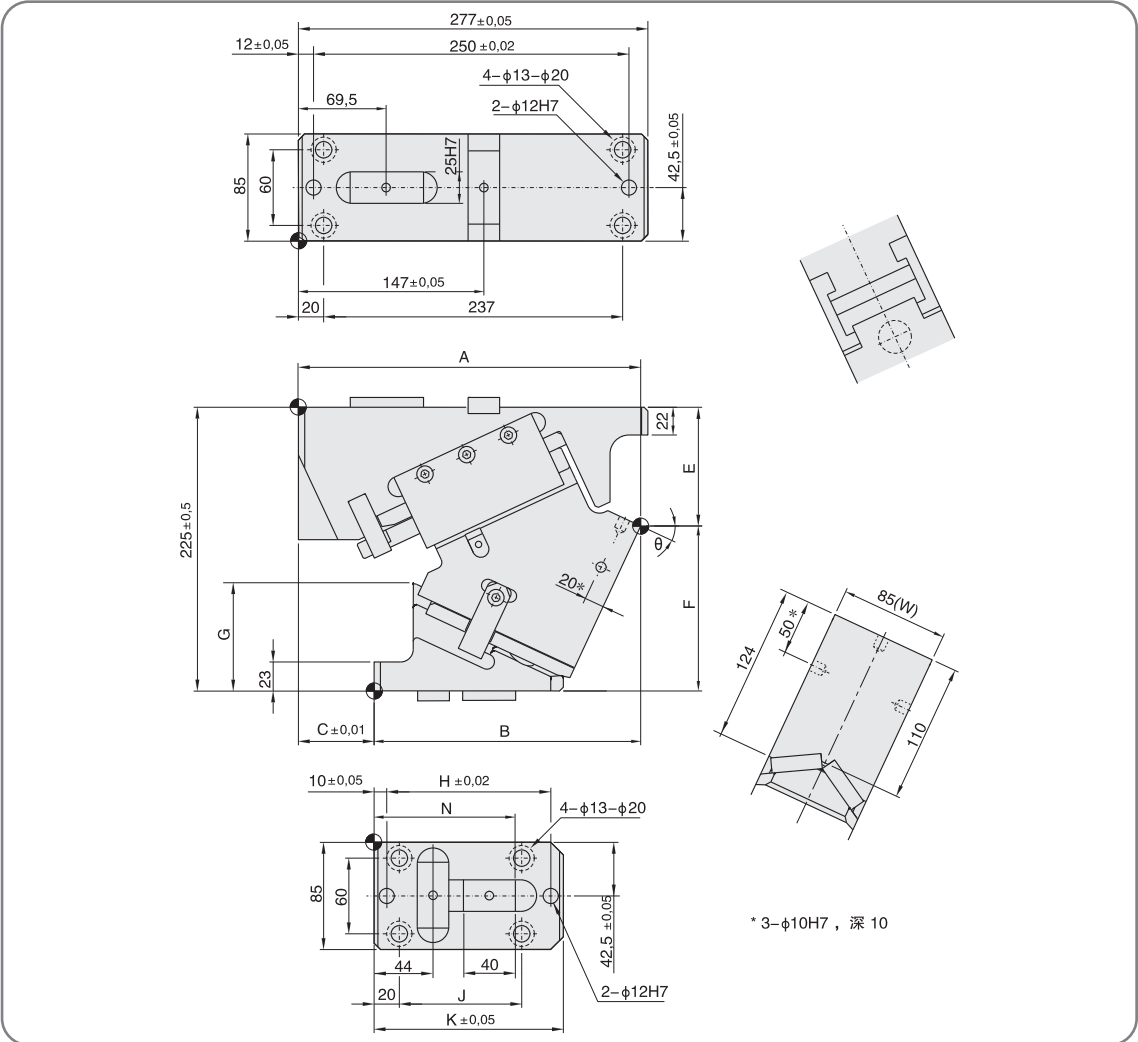
序号 No.	名称 Description	数量 Qty	材料和备注 Material and Remark
1	驱动块 Cam Driver	1	QT450
2	滑块 Cam Slider	1	QT450
3	底座 Cam Holder	1	QT450
4	V型导板 V Guide Plate	1	铜合金Bronze
8	导板 Wear Plate	1	45
11	强制拉回 Positive Return Follower	2	45
15	导板 Wear Plate	1	铜合金Bronze
16	导向盖板 Slide Keeper	2	铜合金Bronze
18	安全挡板 Safety Plate	1	45
19	聚氨酯 Urethane	2	聚氨酯Urethane
22	氮气弹簧 Gas Spring	1	规格Type

KACVG
060



Order **KACVG060** - θ - Type
KACVG060 - 10 - GK

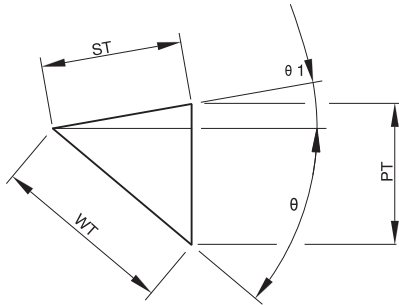
KACVG 085



* 3- $\phi 10H7$, 深 10

Catalog No.	A	B	C	E	F	G	H	J	K	N	重量 Weight Kg
KACVG085-00	267,0	152,0	115,0	63,0	162,0	45,0	130	97	150	113.5	28,2
KACVG085-05	274,4	162,4	110,0	67,2	157,8	51,9					27,5
KACVG085-10	275,1	174,1	101,0	71,8	153,2	59,7					26,6
KACVG085-15	278,0	186,0	92,0	79,7	145,3	65,7					26,3
KACVG085-20	273,1	204,1	69,0	88,4	136,6	71,0					26,1
KACVG085-25	271,3	211,3	60,0	94,2	130,8	85,8					26,1
KACVG085-30	269,6	217,6	52,0	100,3	124,7	93,0	120	87	140	106.5	25,3
KACVG085-35	266,0	219,0	47,0	103,5	121,5	104,0					24,4
KACVG085-40	262,4	225,4	37,0	110,5	114,5	110,0					24,0
KACVG085-45	256,8	233,8	23,0	118,0	107,0	115,0					24,7
KACVG085-50	249,2	229,2	20,0	133,5	91,5	115,0					24,7
KACVG085-55	250,7	231,7	19,0	140,8	84,2	110,0					24,6
KACVG085-60	240,1	236,1	4,0	149,4	75,6	115,0	110	77	130	96.5	25,4
KACVG085-65	235,0	240,0	-5,0	159,1	65,9	120,0					25,7
KACVG085-70	230,0	245,0	-15,0	168,9	56,1	120,0					26,2
KACVG085-75	228,0	253,0	-25,0	187,0	38,0	135,0					90

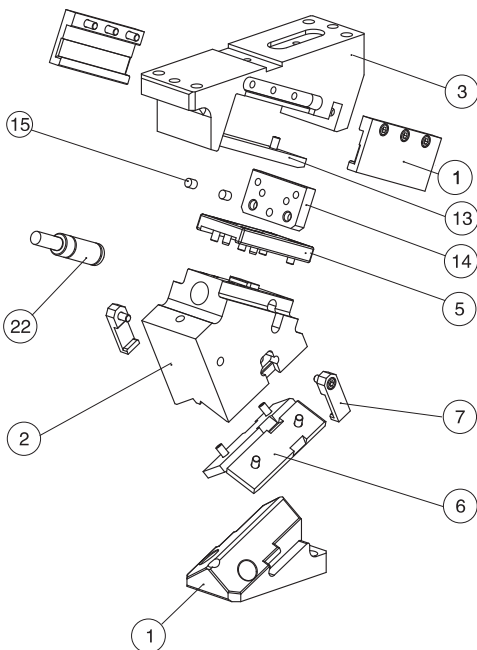
● Cam Digram



θ	$\theta 1$	WT	ST	PT
0°	50°	19.3	30	23.0
5°	45°	21.3		23.1
10°	40°	23.3		23.3
15°	35°	25.4		23.8
20°	30°	27.6		24.5
25°	25°	30.0		25.4
30°	20°	32.6		26.5
35°	15°	35.4		28.1
40°	10°	38.6		30.0
45°	5°	42.3		32.5
50°	0°	46.7		35.8
55°		52.3		42.8
60°		60.0		52.0
65°		71.0		64.3
70°		58.5	55.0	
75°		20	77.3	74.6

Catalog No.	加工力 Working Force N
KACVG085-00	5228
KACVG085-05	5206
KACVG085-10	5182
KACVG085-15	5157
KACVG085-20	5130
KACVG085-25	5103
KACVG085-30	5075
KACVG085-35	5047
KACVG085-40	5018
KACVG085-45	4998
KACVG085-50	4980
KACVG085-55	5559
KACVG085-60	6377
KACVG085-65	7545
KACVG085-70	9318
KACVG085-75	12314

规格 Type	θ	弹簧力 Sping Force N		氮气缸 Gas Spring
		初压 Initial Load	终压 Final Load	
GK	00° - 65°	2000	3090	X320-038-TD (Kaller)
	70° - 75°		3080	X320-025-TD (Kaller)
GD	00° - 65°	2010	2720	U 0325038 (Dadco)
	70° - 75°			U 0325025 (Dadco)



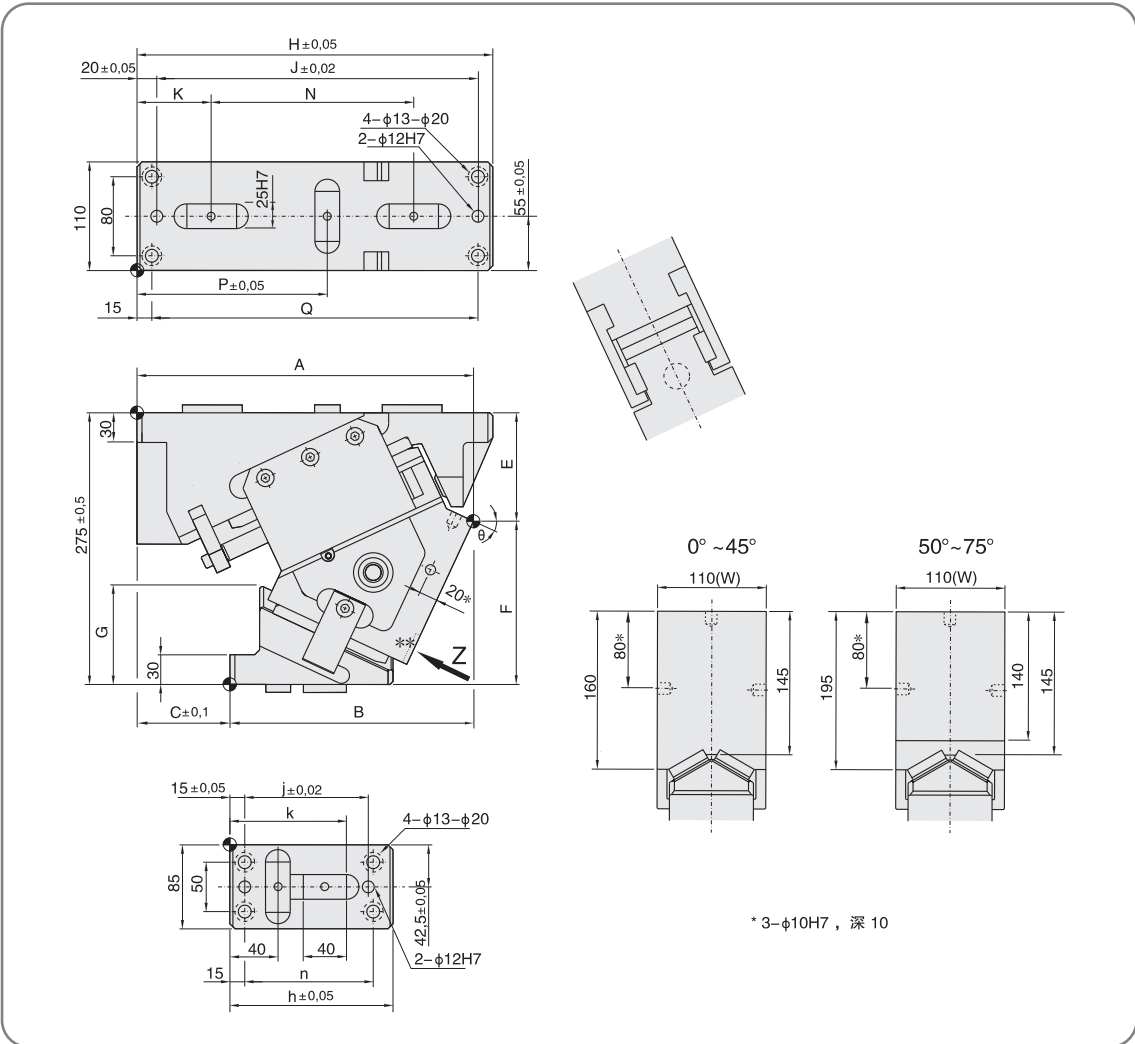
序号 No.	名称 Description	数量 Qty	材料和备注 Material and Remark
1	驱动块 Cam Driver	1	QT450
2	滑块 Cam Slider	1	QT450
3	底座 Cam Holder	1	QT450
5	导板 Wear Plate	1	45
6	V型导板 V Guide Plate	2	铜合金Bronze
7	强制拉回 Positive Return Follower	2	45
11	导向盖板 Slide Keeper	2	铜合金Bronze
13	导板 Wear Plate	1	铜合金Bronze
14	安全挡板 Safety Plate	1	45
15	聚氨酯 Urethane	2	聚氨酯Urethane
22	氮气弹簧 Gas Spring	1	规格Type

KACVG
085



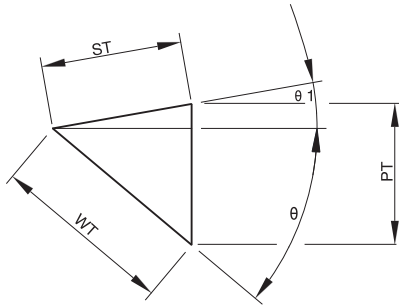
Order **KACVG085** - θ - Type
KACVG085 - 10 - GK

KACVG 110



Catalog No.	A	B	C	E	F	G	H	J	K	N	P	Q	j	k	n	h	重量 Weight Kg
KACVG110-00	318,0	180,0	138,0	70,0	205,0	55,0	330	295	70	185	137,5	300	125	109	130	165	51,5
KACVG110-05	324,5	194,5	130,0	79,3	195,7	59,6											50,4
KACVG110-10	330,2	209,2	121,0	84,1	190,9	70,2	360	325	75	205	192,5	330	140	115	145	180	50,2
KACVG110-15	336,2	222,2	114,0	94,5	180,5	76,8											51,3
KACVG110-20	339,3	234,3	105,0	100,4	174,6	89,3	345	310	93	185	180,5	315	105	95	110	150	49,7
KACVG110-25	340,5	246,5	94,0	109,7	165,3	100,8											49,0
KACVG110-30	348,4	278,4	70,0	120,5	154,5	124,5	165,0	310	93	185	180,5	315	105	95	110	150	49,5
KACVG110-35	343,5	289,5	54,0	127,8	147,2	125,0											48,6
KACVG110-40	332,6	268,6	64,0	139,4	135,6	130,0	345	310	93	185	180,5	315	105	95	110	150	46,3
KACVG110-45	322,5	277,5	45,0	149,4	125,6	140,0											46,6
KACVG110-50	309,5	284,5	25,0	156,2	118,8	150,0	345	310	93	185	180,5	315	105	95	110	150	45,4
KACVG110-55	311,1	293,1	18,0	169,8	105,2	155,0											46,5
KACVG110-60	327,9	320,9	7,0	168,9	106,1	165,0	345	310	93	185	180,5	315	105	95	110	150	47,9
KACVG110-65	317,2	327,2	-10,0	185,0	90,0												48,9
KACVG110-70	313,1	333,1	-20,0	205,0	70,0	165,0	345	310	93	185	180,5	315	105	95	110	150	50,8
KACVG110-75	306,8	336,8	-30,0	225,0	50,0												52,6

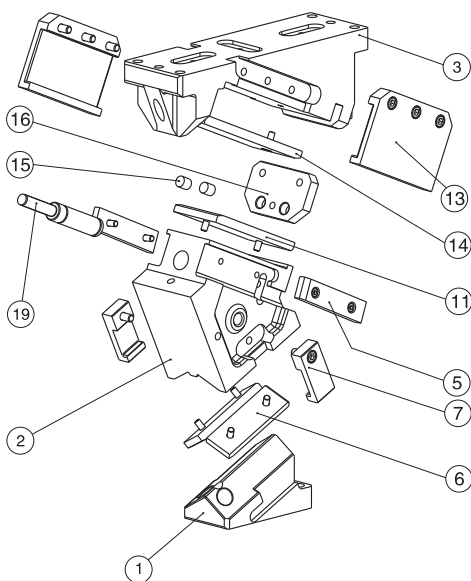
● Cam Digarm



θ	$\theta 1$	WT	ST	PT
0°	50°	32,1	50	38,3
5°	45°	35,5		38,4
10°	40°	38,9		38,9
15°	35°	42,4		39,7
20°	30°	46,1		40,8
25°	25°	50,0		42,3
30°	20°	54,3		44,2
35°	15°	59,0		46,8
40°	10°	64,3		50,0
45°	5°	70,4		54,2
50°	0°	77,8		59,6
55°		87,2		71,4
60°		100,0		86,6
65°		94,6		40
70°		81,9	28	76,9
75°		108,2		104,5

Catalog No.	加工力 Working Force N
KACVG110-00	5882
KACVG110-05	5841
KACVG110-10	5796
KACVG110-15	5750
KACVG110-20	5701
KACVG110-25	5650
KACVG110-30	5598
KACVG110-35	5545
KACVG110-40	5492
KACVG110-45	5438
KACVG110-50	5385
KACVG110-55	6035
KACVG110-60	6920
KACVG110-65	8184
KACVG110-70	10108
KACVG110-75	13351

Option	θ	弹簧力 Sping Force N		氮气缸
		初压	终压	
GK	00°-60°	2000	3020	X 320-063-TD(Kaller)
	65°		3090	X 320-050-TD(Kaller)
	70°-75°			X 320-038-TD(Kaller)
GD	00°-60°	2010	2720	U 0325063(Dadco)
	65°			U 0325050(Dadco)
	70°-75°			U 0325038(Dadco)



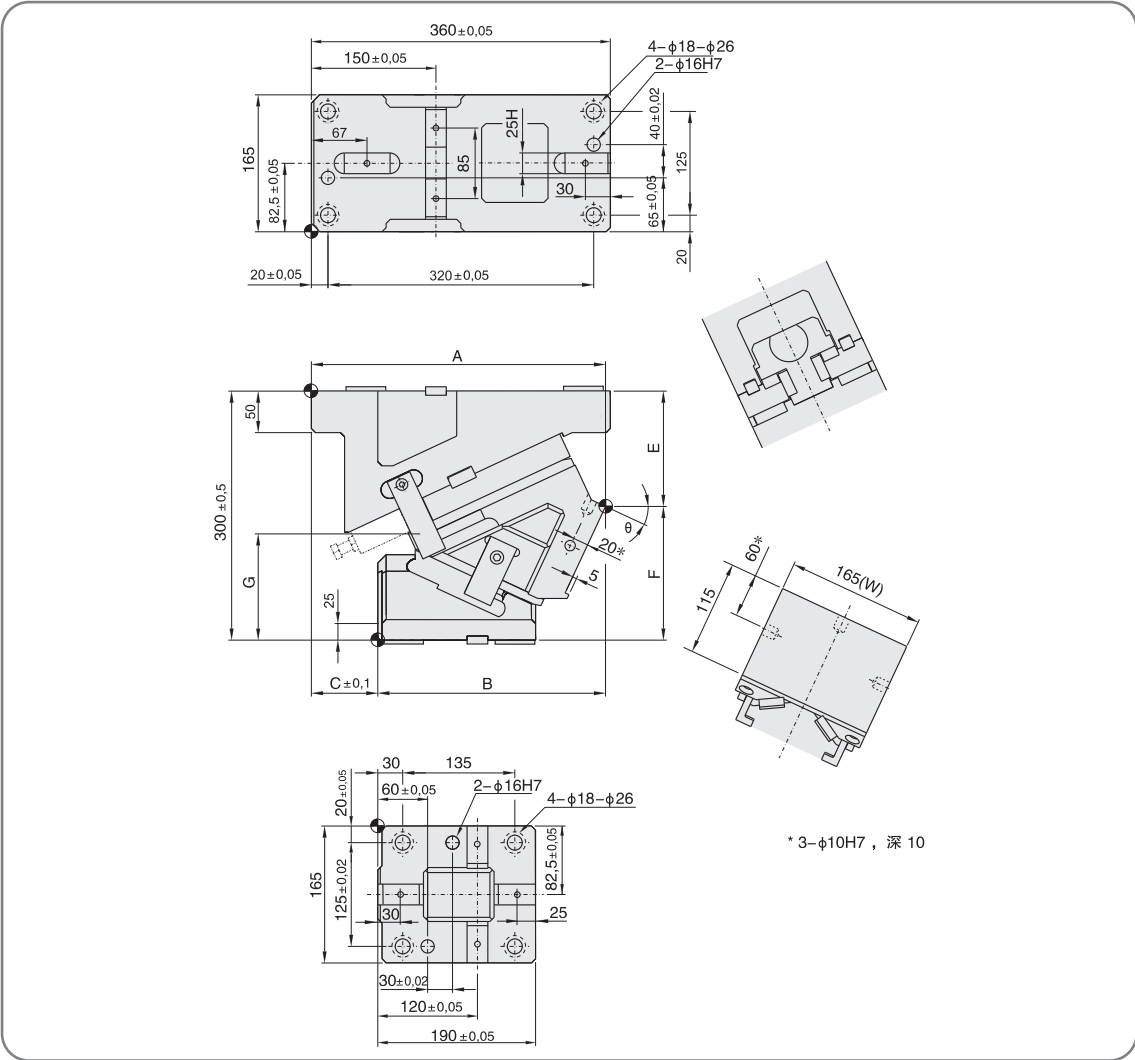
序号 No.	名称 Description	数量 Qty	材料和备注 Material and Remark
1	驱动块 Cam Driver	1	QT450
2	滑块 Cam Slider	1	QT450
3	底座 Cam Holder	1	QT450
5	导板 Wear Plate	2	45
6	导板 Wear Plate	2	铜合金Bronze
7	强制拉回 Positive Return Follower	2	45
3	导板 Wear Plate	1	铜合金Bronze
13	导向盖板 Slide Keepe	2	铜合金Bronze
15	聚氨酯 Urethane	2	聚氨酯Urethane
16	安全挡板 Safety Plate	1	45
19	氮气弹簧 Gas Spring	1	规格Type

KACVG
110



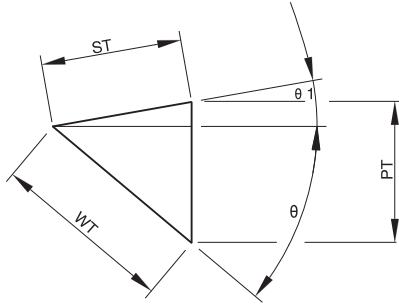
Order **KACVG110** - θ - Type
KACVG110 - 10 - GK

KACVG 165



Catalog No.	A	B	C	E	F	G	重量 Weight Kg
KACVG165-00	360,0	210,0	150,0	95,0	205,0	77,5	75,1
KACVG165-05	356,3	222,3	134,0	100,9	199,1	87,8	72,9
KACVG165-10	359,3	241,3	118,0	111,1	188,9	94,6	72,1
KACVG165-15	355,8	244,8	111,0	122,5	177,5	101,0	71,6
KACVG165-20	355,7	262,7	93,0	130,0	170,0	111,8	70,3
KACVG165-25	354,2	274,2	80,0	138,9	161,1	121,6	69,8
KACVG165-30	357,3	287,3	70,0	148,3	151,7	132,8	69,0
KACVG165-35	345,8	281,8	64,0	158,9	141,1	139,9	69,4
KACVG165-40	344,3	286,3	58,0	170,4	129,6	147,7	69,3
KACVG165-45	344,9	304,9	40,0	182,7	117,3	154,5	70,3
KACVG165-50	327,3	317,3	10,0	195,6	104,4	141,2	69,1
KACVG165-55	324,4	324,4	0,0	210,2	89,8	127,8	68,1
KACVG165-60	317,6	324,6	-7,0	215,6	84,4	128,9	68,3
KACVG165-65	314,2	329,2	-15,0	231,4	68,6	132,5	70,0
KACVG165-70	308,1	333,1	-25,0	245,7	54,3	132,9	71,7
KACVG165-75	301,1	336,1	-35,0	260,2	39,8	132,3	73,5

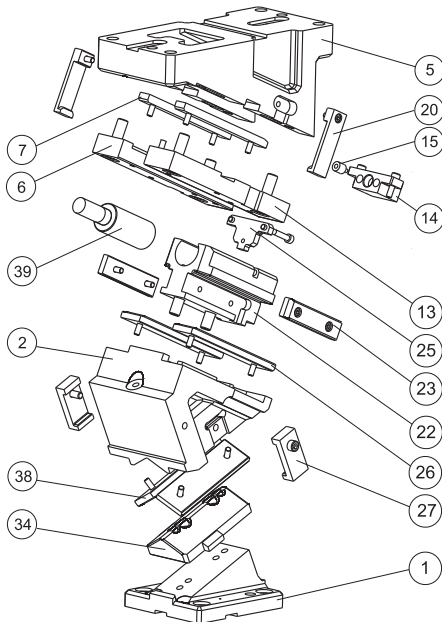
● Cam Digrarm



θ	$\theta 1$	WT	ST	PT	
0°	50°	32.1	50	38,3	
5°	45°	35.5		38,4	
10°	40°	38.9		38,9	
15°	35°	42.4		39,7	
20°	30°	46.1		40,8	
25°	25°	50.0		42,3	
30°	20°	54.3		44,2	
35°	15°	59.0		46,8	
40°	10°	64.3		50,0	
45°	5°	70.4		54,2	
50°	0°	77.8		59,6	
55°		61.0		35	50,0
60°		40.0		20	34,6
65°		47.3			42,9
70°		58.5	55,0		
75°		58.0	15		56,0

Catalog No.	加工力 Working Force N
KACVG165-00	12921
KACVG165-05	12851
KACVG165-10	12777
KACVG165-15	12699
KACVG165-20	12618
KACVG165-25	12533
KACVG165-30	12447
KACVG165-35	12359
KACVG165-40	12270
KACVG165-45	12181
KACVG165-50	12092
KACVG165-55	13546
KACVG165-60	15542
KACVG165-65	18384
KACVG165-70	22708
KACVG165-75	30002

规格 Type	θ	弹簧力 Sping Force N		氮气缸 Gas Spring
		初压 Initial Load	终压 Final Load	
GK	00° - 50°	4700	6600	X 750-063-TD(Kaller)
	55°		6500	X 750-050-TD(Kaller)
	60° - 75°			X 750-038-TD(Kaller)
GD	00° - 50°	4700	6150	U 0800063(Dadco)
	55°			U 0800050(Dadco)
	60° - 75°			U 0800038(Dadco)



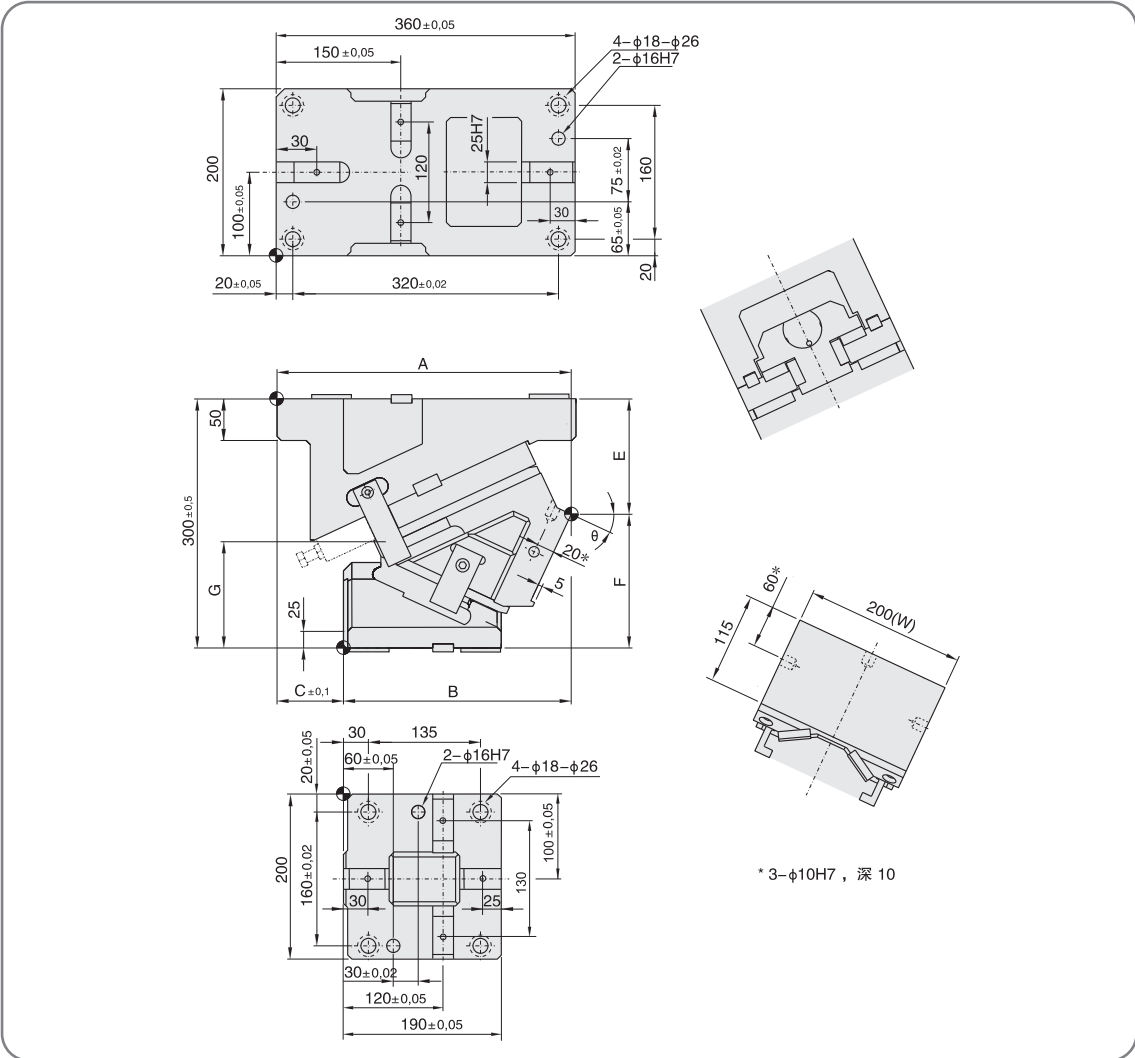
序号 No.	名称 Description	数量 Qty	材料和备注 Material and Remark
1	驱动块 Cam Driver	1	QT450
2	滑块 Cam Slider	1	QT450
5	底座 Cam Holder	1	QT450
6	压板 Upper Plate	1	45
7	导板 Wear Plate	2	铜合金Bronze
14	挡板 Safety Plate	1	45
15	聚氨酯 Urethane	1	聚氨酯Urethane
20	安全挂钩 Safety Keeper	2	45
23	导板 Wear Plate	2	铜合金Bronze
25	安全挡板 Safety Plate	1	45
26	导板 Wear Plate	2	铜合金Bronze
27	强制拉回 Positive Return Follower	2	45
34	V型导板 V Guide Plate	1	45
38	导板 Wear Plate	2	铜合金Bronze
39	氮气弹簧 Gas Spring	1	规格Type

KACVG
165



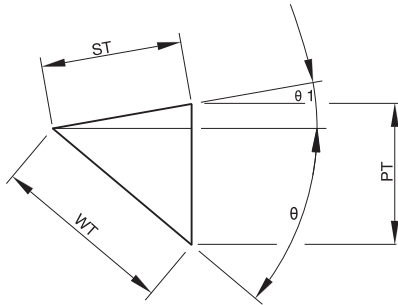
Order **KACVG165** - θ - **Type**
KACVG165 - **10** - **GK**

KACVG 200



Catalog No.	A	B	C	E	F	G	重量 Weight Kg
KACVG200-00	360,0	210,0	150,0	95,0	205,0	78,5	91,6
KACVG200-05	356,3	222,3	134,0	100,9	199,1	88,8	88,9
KACVG200-10	359,3	241,3	118,0	111,1	188,9	95,6	88,0
KACVG200-15	355,8	244,8	111,0	122,5	177,5	101,9	87,0
KACVG200-20	355,7	262,7	93,0	130,0	170,0	112,7	85,5
KACVG200-25	354,9	274,9	80,0	138,6	161,4	122,8	85,9
KACVG200-30	357,3	287,3	70,0	148,3	151,7	132,2	85,0
KACVG200-35	345,8	281,8	64,0	158,9	141,1	140,7	84,8
KACVG200-40	344,3	286,3	58,0	170,4	129,6	148,4	85,8
KACVG200-45	344,9	304,9	40,0	182,7	117,3	155,2	85,7
KACVG200-50	327,3	317,3	10,0	195,6	104,4	141,8	84,7
KACVG200-55	324,4	324,4	0,0	210,2	89,8	131,9	85,7
KACVG200-60	317,6	324,6	-7,0	215,6	84,4	133,7	84,2
KACVG200-65	319,2	334,2	-15,0	231,4	68,6	133,0	86,7
KACVG200-70	313,1	338,1	-25,0	245,7	54,3	133,2	88,8
KACVG200-75	306,1	341,1	-35,0	260,2	39,8	132,6	91,1

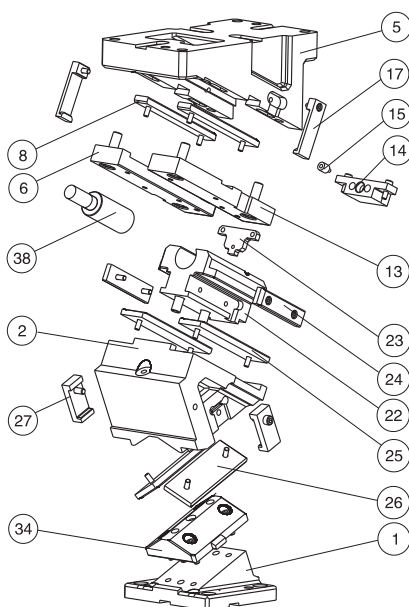
● Cam Digrarm



θ	$\theta 1$	WT	ST	PT
0°	50°	32,1	50	38,3
5°	45°	35,5		38,4
10°	40°	38,9		38,9
15°	35°	42,4		39,7
20°	30°	46,1		40,8
25°	25°	50,0		42,3
30°	20°	54,3		44,2
35°	15°	59,0		46,8
40°	10°	64,3		50,0
45°	5°	70,4		54,2
50°	0°	77,8	30	59,6
55°		52,3		42,8
60°		60,0		52,0
65°		71,0	20	64,3
70°		58,5		55,0
75°		77,3	74,6	

Catalog No.	加工力 Working Force N
KACVG200-00	13171
KACVG200-05	13076
KACVG200-10	12974
KACVG200-15	12868
KACVG200-20	12756
KACVG200-25	12640
KACVG200-30	12522
KACVG200-35	12401
KACVG200-40	12270
KACVG200-45	12157
KACVG200-50	12036
KACVG200-55	13486
KACVG200-60	15473
KACVG200-65	18303
KACVG200-70	22611
KACVG200-75	29868

规格 Type	θ	弹簧力 Sping Force N		氮气缸 Gas Spring
		初压 Initial Load	终压 Final Load	
GK	00°-50°	4700	6600	X750-063-TD (Kaller)
	55°-65°			X750-050-TD (Kaller)
	70°-75°			X750-038-TD (Kaller)
GD	00°-50°	4700	6150	U 0800063 (Dadco)
	55°-65°			U 0800050 (Dadco)
	70°-75°			U 0800038 (Dadco)



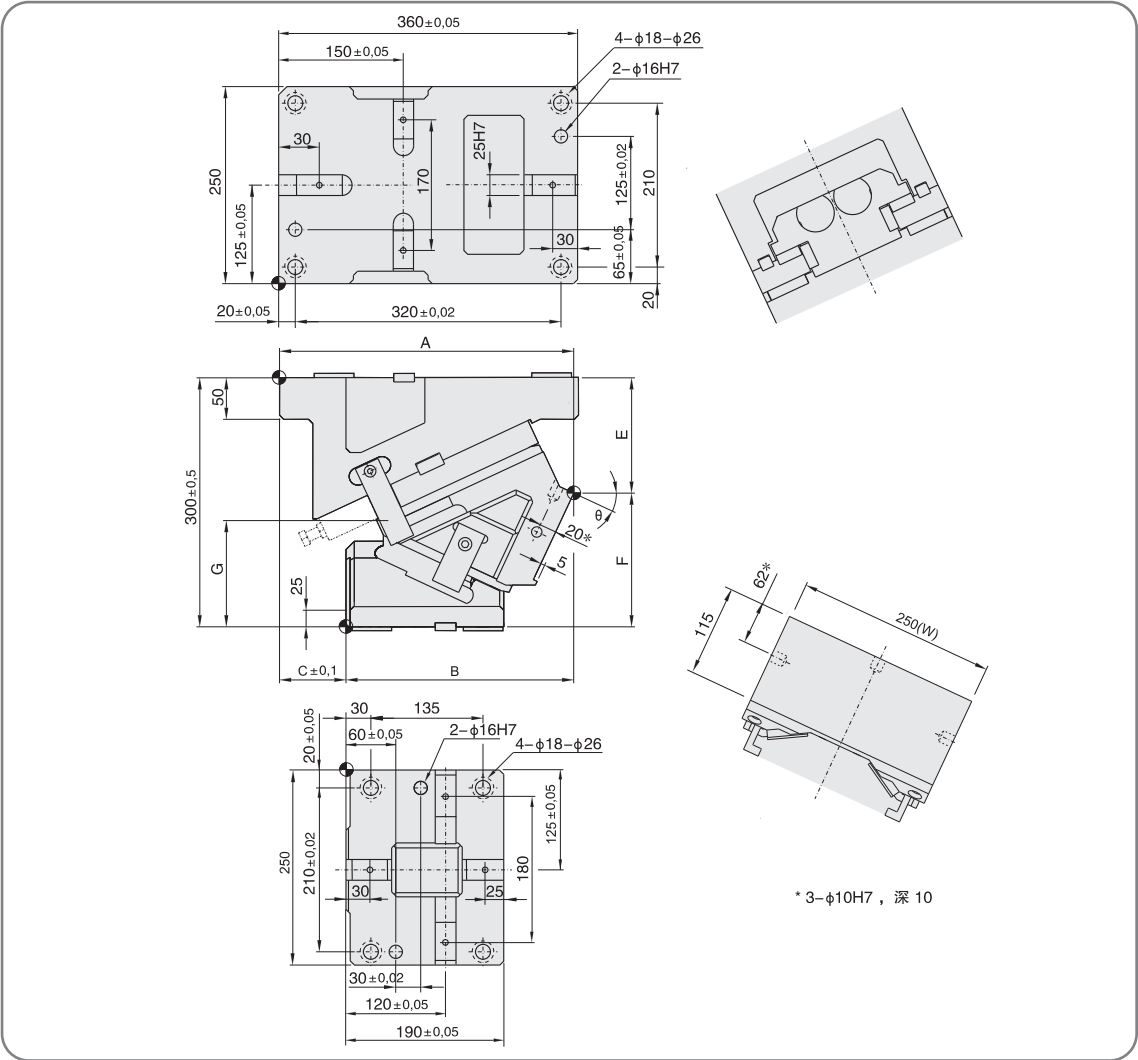
序号 No.	名称 Description	数量 Qty	材料和备注 Material and Remark
1	驱动块 Cam Driver	1	QT450
2	滑块 Cam Slider	1	QT450
5	底座 Cam Holder	1	QT450
6	压板 Lipper Plate	1	45
8	导板 Wear Plate	2	铜合金Bronze
14	挡板 Stop Block	1	45
15	聚氨酯 Urethane	1	聚氨酯Urethane
17	安全挂钩 Safety Keeper	2	45
23	安全挡板 Safety Plate	2	45
24	导板 Wear Plate	1	铜合金Bronze
25	导板 Wear Plate	2	铜合金Bronze
26	导板 Wear Plate	2	铜合金Bronze
27	强制拉回 Positive Return Follower	1	45
34	V型导板 V Guide Plate	2	45
38	氮气弹簧 Gas Spring	1	规格Type

KACVG 200



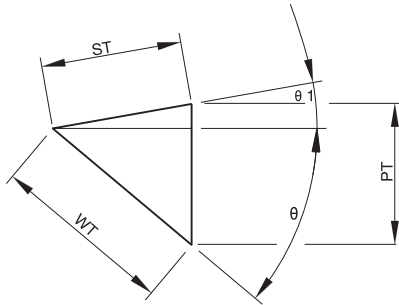
Order **KACVG200** - θ - Type
KACVG200 - 10 - GK

KACVG 250



Catalog No.	A	B	C	E	F	G	重量 Weight Kg
KACVG250-00	360,0	210,0	150,0	95,0	205,0	72,5	113,0
KACVG250-05	356,4	222,4	134,0	98,9	201,1	84,6	110,5
KACVG250-10	359,6	241,6	118,0	109,1	190,9	91,3	109,6
KACVG250-15	356,3	245,3	111,0	120,5	179,5	96,3	108,4
KACVG250-20	356,4	263,4	93,0	128,1	171,9	106,7	107,1
KACVG250-25	355,7	275,7	80,0	136,8	163,2	116,4	106,0
KACVG250-30	358,3	288,3	70,0	146,5	153,5	125,5	105,8
KACVG250-35	346,9	282,9	64,0	157,3	142,7	133,8	107,0
KACVG250-40	345,6	287,6	58,0	168,8	131,2	141,3	108,2
KACVG250-45	346,3	306,3	40,0	181,2	118,8	148,0	108,5
KACVG250-50	328,8	318,8	10,0	194,3	105,7	138,4	107,4
KACVG250-55	326,8	326,8	0,0	208,5	91,5	125,3	106,3
KACVG250-60	320,2	327,2	-7,0	214,1	85,9	131,5	106,4
KACVG250-65	319,2	334,2	-15,0	231,4	68,6	134,3	109,4
KACVG250-70	313,1	338,1	-25,0	245,7	54,3	135,3	112,5
KACVG250-75	306,1	341,1	-35,0	260,2	39,8	135,4	115,5

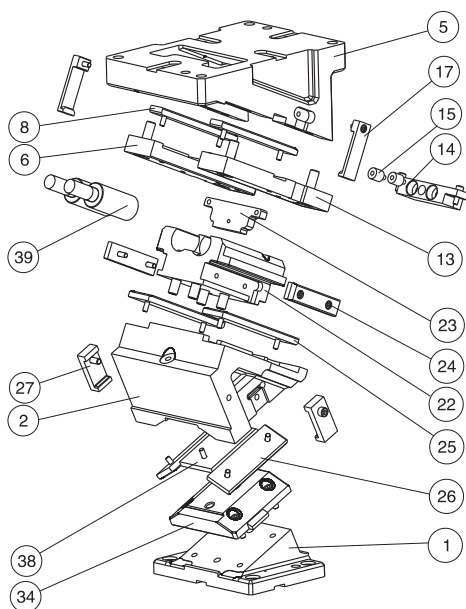
● Cam Digrarm



θ	$\theta 1$	WT	ST	PT
0°	50°	32.1	50	38,3
5°	45°	35.5		38,4
10°	40°	38.9		38,9
15°	35°	42.4		39,7
20°	30°	46.1		40,8
25°	25°	50.0		42,3
30°	20°	54.3		44,2
35°	15°	59.0		46,8
40°	10°	64.3		50,0
45°	5°	70.4		54,2
50°	0°	77.8	30	59,6
55°		52,3		42,8
60°		60,0		52,0
65°		71,0	20	64,3
70°		58,5		55,0
75°		77,3	74,6	

Catalog No.	加工力 Working Force N
KACVG250-00	24794
KACVG250-05	25662
KACVG250-10	25521
KACVG250-15	25372
KACVG250-20	25217
KACVG250-25	25056
KACVG250-30	24891
KACVG250-35	24722
KACVG250-40	24553
KACVG250-45	24383
KACVG250-50	24213
KACVG250-55	27127
KACVG250-60	31125
KACVG250-65	36817
KACVG250-70	45480
KACVG250-75	60094

规格 Type	θ	弹簧力 Sping Force N		氮气缸 Gas Spring
		初压 Initial Load	终压 Final Load	
GK	00°-50°	9400	13200	X750-063-TD (Kaller)
	55°-65°			X750-050-TD (Kaller)
	70°-75°		13000	X750-038-TD (Kaller)
GD	00°-50°	9400	12300	U 0800063 (Dadco)
	55°-65°			U 0800050 (Dadco)
	70°-75°			U 0800038 (Dadco)



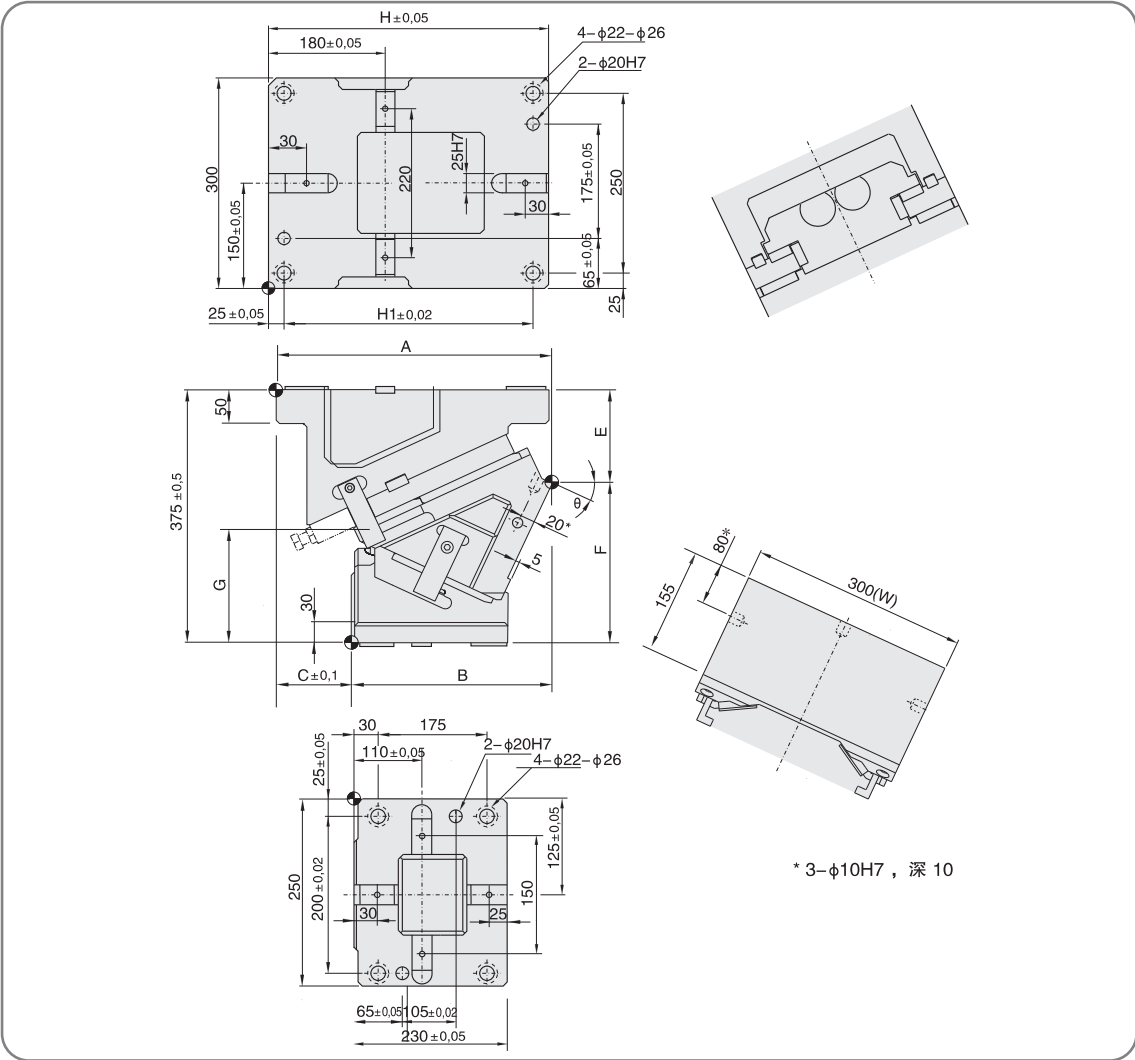
序号 No.	名称 Description	数量 Qty	材料和备注 Material and Remark
1	驱动块 Cam Driver	1	QT450
2	滑块 Cam Slider	1	QT450
5	底座 Cam Holder	1	QT450
6	压板 Upper Plate	1	45
8	导板 Wear Plate	2	铜合金Bronze
14	挡板 Stop Block	1	45
15	聚氨酯 Urethane	2	聚氨酯Urethane
17	安全挂钩 Softg Block	2	45
23	安全挡板 Safety Plate	1	45
24	导板 Wear Plate	2	铜合金Bronze
25	导板 Wear Plate	2	铜合金Bronze
26	导板 Wear Plate	2	铜合金Bronze
27	强制拉回 Positive Return Follower	2	45
34	V型导板 V Guide Plate	1	45
39	氮气弹簧 Gas Spring	2	规格Type

KACVG
250



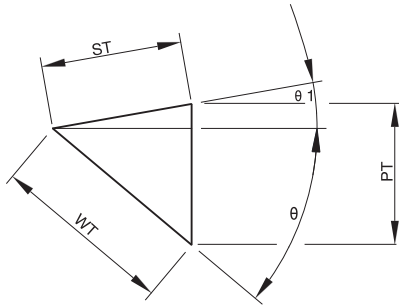
Order **KACVG250** - θ - **Type**
KACVG250 - **10** - **GK**

KACVG 300



Catalog No.	A	B	C	E	F	G	H	H1	重量 Weight Kg
KACVG300-00	395.0	232.0	163.0	98.0	277.0	105.0	390	340	167.1
KACVG300-05	387.2	232.2	155.0	104.2	270.8	116.9			163.8
KACVG300-10	394.1	249.1	145.0	111.9	263.1	128.5			161.9
KACVG300-15	395.8	260.8	135.0	121.0	254.0	139.6			160.1
KACVG300-20	397.1	277.1	120.0	131.6	243.4	150.2			157.9
KACVG300-25	404.7	294.7	110.0	138.7	236.3	165.0	400	350	158.6
KACVG300-30	408.2	323.2	85.0	146.9	228.1	179.2			157.1
KACVG300-35	404.5	334.5	70.0	159.2	215.8	189.6			158.5
KACVG300-40	400.5	345.5	55.0	167.3	207.7	204.5			159.4
KACVG300-45	394.8	354.8	40.0	179.2	195.8	215.6			159.0
KACVG300-50	393.3	376.3	17.0	196.0	179.0	194.8	410	360	157.7
KACVG300-55	393.3	393.3	0.0	222.8	152.2	188.8			162.3
KACVG300-60	393.3	403.3	-10.0	249.6	125.4	182.3			166.9
KACVG300-65	387.5	415.5	-28.0	266.5	108.5	185.4			171.7
KACVG300-70	378.8	423.7	-45.0	282.0	93.0	189.2			176.8
KACVG300-75	364.7	429.7	-65.0	296.9	78.1	192.9			182.2

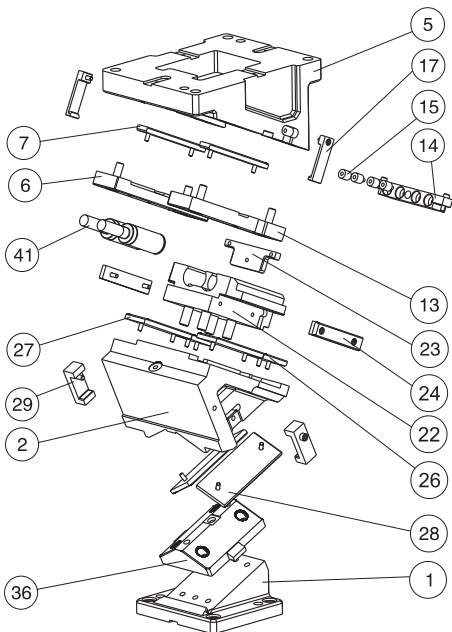
● Cam Digrarm



θ	$\theta 1$	WT	ST	PT
0°	50°	38.6	60	46,0
5°	45°	42.6		46,1
10°	40°	46.7		46,7
15°	35°	50.9		47,6
20°	30°	55.3		48,9
25°	25°	60.0		50,7
30°	20°	65.1		53,1
35°	15°	70.8		56,1
40°	10°	77.1		60,0
45°	5°	84.5		65,0
50°	0°	93.3		71,5
55°		104,6		85,7
60°		120,0		103,9
65°		94.6		40
70°		73.1	25	68,7
75°	96.6		93,3	

Catalog No.	加工力 Working Force N
KACVG300-00	26642
KACVG300-05	26447
KACVG300-10	26239
KACVG300-15	26019
KACVG300-20	25790
KACVG300-25	25552
KACVG300-30	25308
KACVG300-35	25060
KACVG300-40	24810
KACVG300-45	24559
KACVG300-50	24309
KACVG300-55	27228
KACVG300-60	31218
KACVG300-65	36928
KACVG300-70	45608
KACVG300-75	60270

规格 Type	θ	弹簧力 Sping Force N		氮气缸 Gas Spring
		初压 Initial Load	终压 Final Load	
GK	00°-60°	9400	13400	X 750-080-TD (Kaller)
	65°		13200	X 750-063-TD (Kaller)
	70°-75°			X 750-050-TD (Kaller)
GD	00°-60°	9400	12300	U 0800080 (Dadco)
	65°			U 0800063 (Dadco)
	70°-75°			U 0800050 (Dadco)



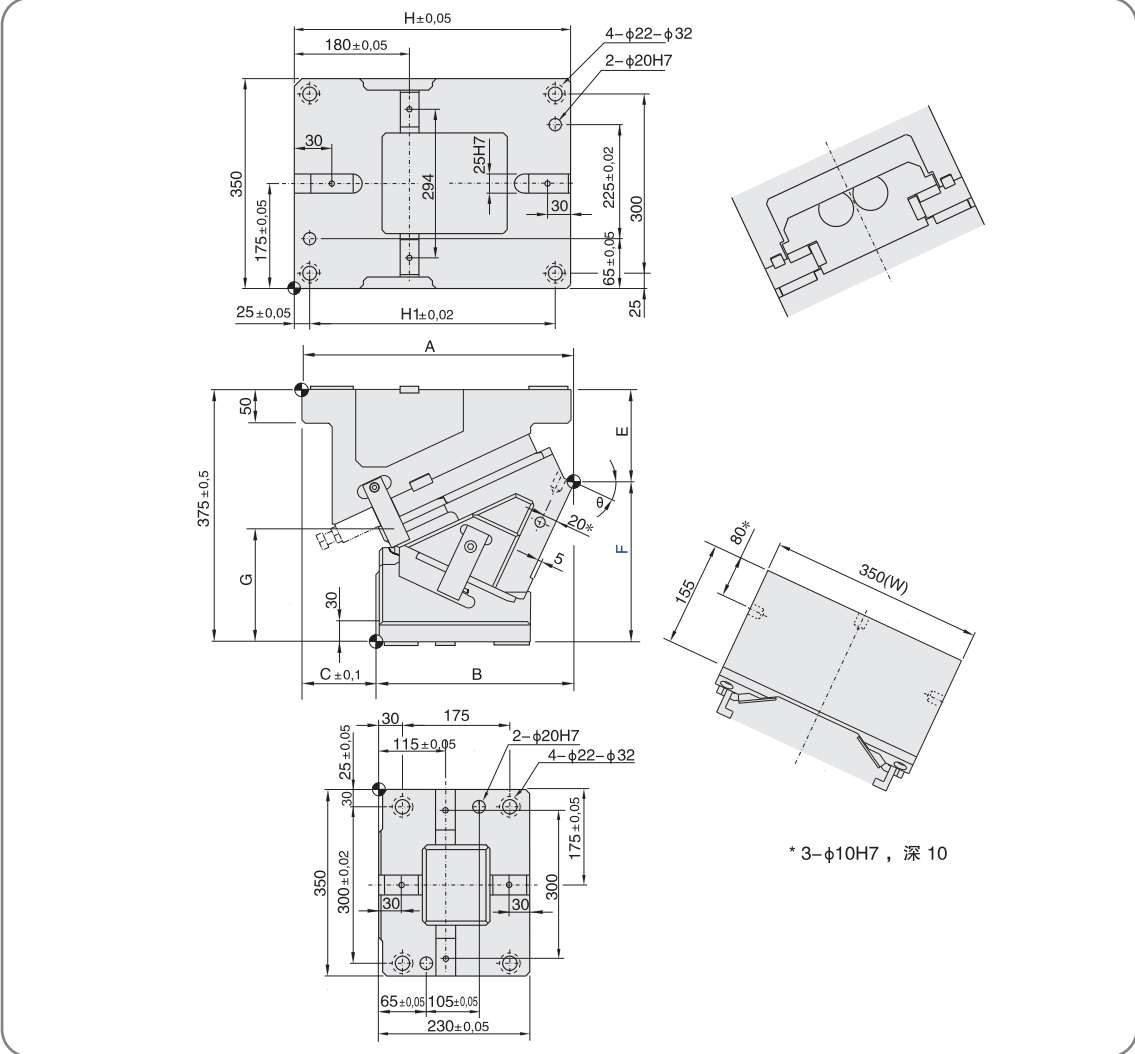
序号 No.	名称 Description	数量 Qty	材料和备注 Material and Remark
1	驱动块 Cam Driver	1	QT450
2	滑 块 Cam Slider	1	QT450
5	底座 Cam Holder	1	QT450
6	压板 Cover Wear Plate	1	45
7	导板 Wear Plate	2	铜合金Bronze
14	挡板 Stop Block	1	45
15	聚氨酯 Urethane	4	聚氨酯Urethane
17	安全挂钩 Softg Block	2	45
23	安全挡板 Safety Plate	1	45
24	导板 Wear Plate	2	铜合金Bronze
27	导板 Wear Plate	2	铜合金Bronze
28	导板 Wear Plate	2	铜合金Bronze
29	强制拉回 Positive Return Follower	2	45
36	V型导板 V Guide Plate	1	45
41	氮气弹簧 Gas Spring	2	规格Type

KACVG
300



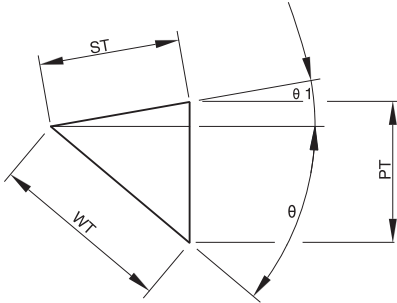
Order **KACVG300** - θ - Type
KACVG300 - 10 - GK

KACVG 350



Catalog No.	A	B	C	E	F	G	H	H1	重量 Weight Kg
KACVG350-00	395.0	235.0	160.0	85.0	290.0	117.5	390	340	212.4
KACVG350-05	409.6	254.6	155.0	95.0	280.0	126.0			214.7
KACVG350-10	414.5	274.5	140.0	104.7	270.3	136.1			207.0
KACVG350-15	408.6	293.6	115.0	113.8	261.2	147.7			204.5
KACVG350-20	422.9	312.9	110.0	122.2	252.8	160.8			205.3
KACVG350-25	421.5	331.5	90.0	129.9	245.1	175.3			203.9
KACVG350-30	418.5	348.5	70.0	136.9	238.1	191.2	410	360	203.5
KACVG350-35	415.9	365.9	50.0	153.1	221.9	198.2			204.6
KACVG350-40	410.8	380.8	30.0	168.4	206.6	206.2			207.1
KACVG350-45	405.2	395.2	10.0	182.8	192.2	215.2			209.7
KACVG350-50	397.4	407.4	-10.0	201.3	173.7	219.8			210.9
KACVG350-55	398.6	418.6	-20.0	214.7	160.3	200.6			208.7
KACVG350-60	392.8	427.8	-35.0	235.7	139.3	200.3			214.1
KACVG350-65	398.8	438.8	-40.0	255.3	119.7	200.9			218.5
KACVG350-70	394.8	444.8	-50.0	274.5	100.5	201.3			225.5
KACVG350-75	394.6	449.6	-55.0	295.2	79.8	199.4			230.9

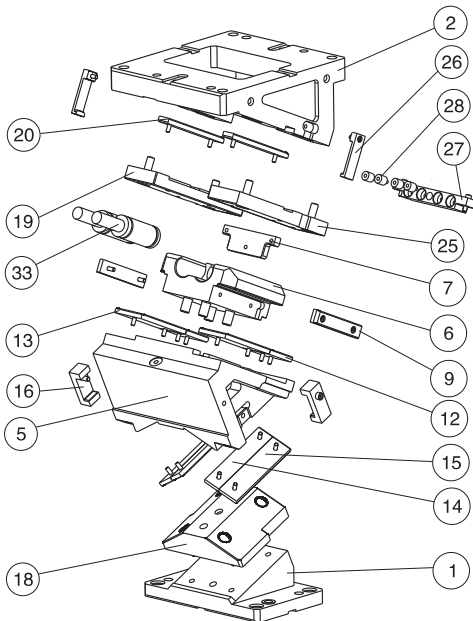
● Cam Digrarm



θ	$\theta 1$	WT	ST	PT
0°	50°	38.6	60	46,0
5°	45°	42.6		46,1
10°	40°	46.7		46,7
15°	35°	50.9		47,6
20°	30°	55.3		48,9
25°	25°	60.0		50,7
30°	20°	65.1		53,1
35°	15°	70.8		56,1
40°	10°	77.1		60,0
45°	5°	84.5		65,0
50°	0°	93.3	71,5	
55°		87.2	50	71,4
60°		90.0	45	77,9
65°		94.6	40	85,8
70°		87.7	30	82,4
75°		96.6	25	93,3

Catalog No.	加工力 Working Force N
KACVG350-00	36403
KACVG350-05	36180
KACVG350-10	35942
KACVG350-15	35691
KACVG350-20	35429
KACVG350-25	35158
KACVG350-30	34880
KACVG350-35	34596
KACVG350-40	34310
KACVG350-45	34023
KACVG350-50	33738
KACVG350-55	37796
KACVG350-60	43334
KACVG350-65	51261
KACVG350-70	63324
KACVG350-75	83668

规格 Type	θ	弹簧力 Sping Force N		氮气缸 Gas Spring
		初压 Initial Load	终压 Final Load	
GK	00°-50°	11531	18434	X1000-080-TD (Kaller)
	55°			X1000-075-TD (Kaller)
	60°-55°			X1000-063-TD (Kaller)
	70°-75°			X1000-050-TD (Kaller)
GD	00°-50°	13260	23813	U 1200080 (Dadco)
	55°			U 1200075 (Dadco)
	60°-65°			U 1200063 (Dadco)
	70°-75°			U 1200050 (Dadco)



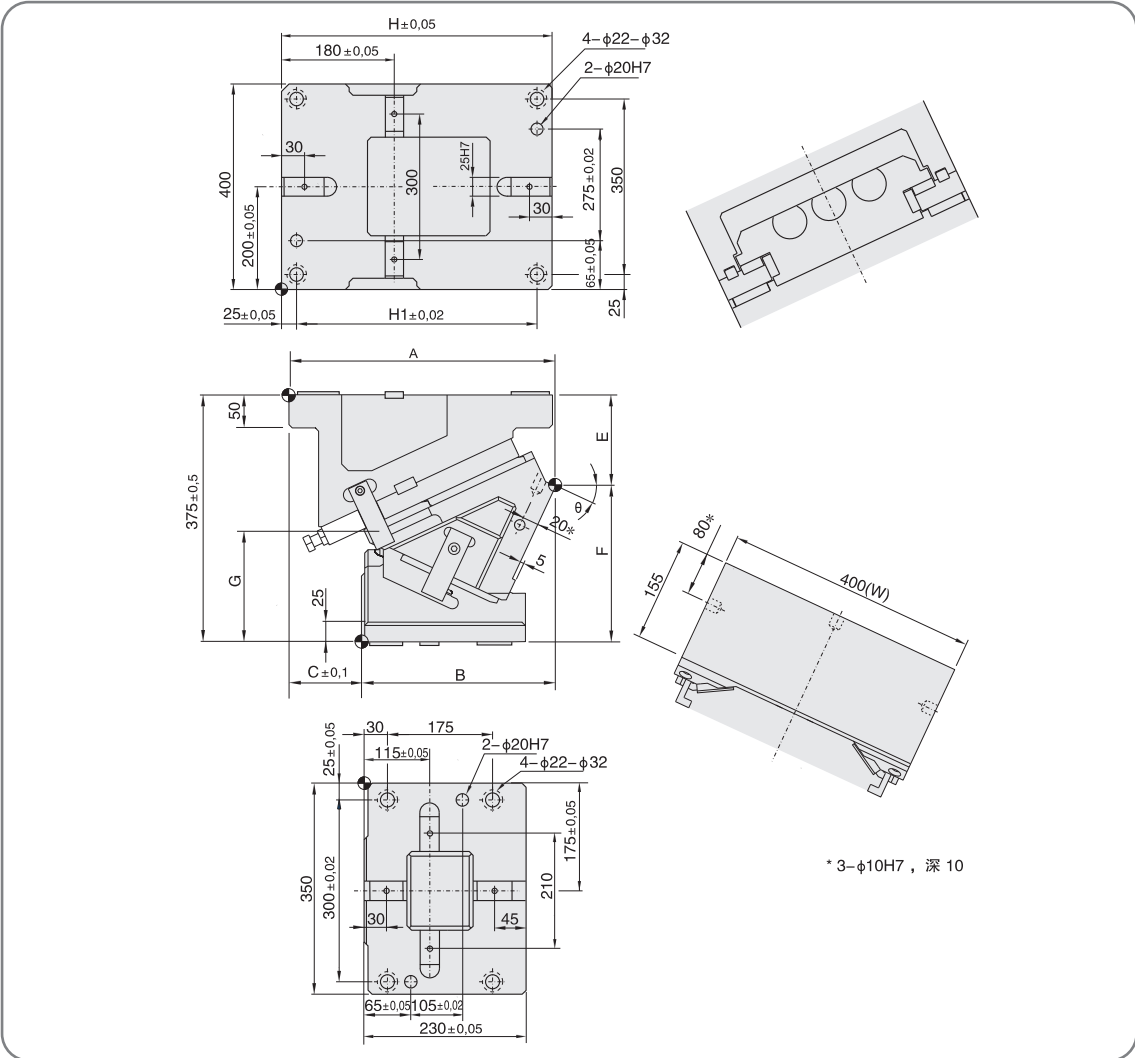
序号 No.	名称 Description	数量 Qty	材料和备注 Material and Remark
1	驱动块 Cam Driver	1	QT450
2	底座 Cam Holder	1	QT450
5	滑 块 Cam Slider	1	QT450
7	安全挡板 Safety Plate	2	45
9	导板 Wear Plate	1	铜合金Bronze
12	导板 Wear Plate	4	铜合金Bronze
13	导板 Wear Plate	2	铜合金Bronze
16	强制拉回 Positive Return Follower	1	45
18	V型导板 V Guide Plate	1	45
19	压板 Cover Wear Plate	2	45
20	导板 Wear Plate	2	铜合金Bronze
26	安全挂钩Softg Block	2	45
27	挡板 Stop Block	2	45
28	聚氨酯 Urethane	1	聚氨酯Urethane
33	氮气弹簧 Gas Spring	2	规格Type

KACVG
350



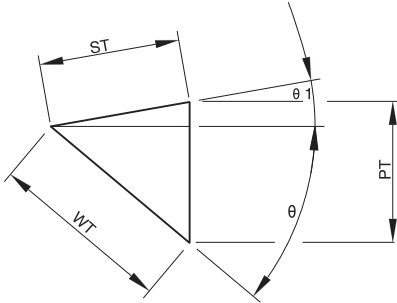
Order **KACVG350** - θ - Type
KACVG350 - 10 - GK

KACVG 400



Catalog No.	A	B	C	E	F	G	H	H1	重量 Weight Kg
KACVG400-00	395,0	237,0	158,0	88,0	287,0	116,0	390	340	224,6
KACVG400-05	387,2	232,2	155,0	94,2	280,8	126,4			221,3
KACVG400-10	394,1	249,1	145,0	106,9	268,1	133,0			218,7
KACVG400-15	395,8	260,8	135,0	118,0	257,0	142,1			215,7
KACVG400-20	397,1	297,1	100,0	131,6	243,4	149,7			212,8
KACVG400-25	404,7	319,7	85,0	138,7	236,3	164,5	400	350	214,0
KACVG400-30	408,2	343,2	65,0	146,9	228,1	178,7			212,7
KACVG400-35	404,5	354,5	50,0	159,2	215,8	189,2			215,0
KACVG400-40	400,5	360,5	40,0	167,3	207,7	204,1			216,2
KACVG400-45	394,8	374,8	20,0	179,2	195,8	215,2			217,3
KACVG400-50	393,3	391,3	2,0	196,0	179,0	198,3	410	360	216,6
KACVG400-55	392,8	405,8	-13,0	221,8	153,2	193,5			224,0
KACVG400-60	393,3	423,3	-30,0	249,6	125,4	186,4			232,2
KACVG400-65	387,5	435,5	-48,0	266,5	108,5	189,7			239,3
KACVG400-70	378,7	443,7	-65,0	282,0	93,0	193,8			247,6
KACVG400-75	364,7	449,7	-85,0	296,9	78,1	197,8			252,9

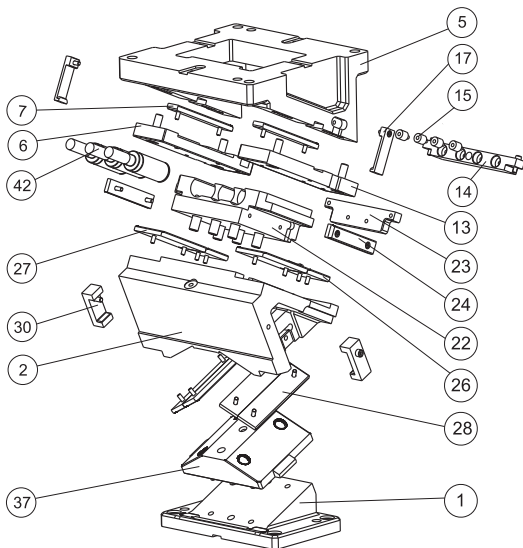
● Cam Digrarm



θ	$\theta 1$	WT	ST	PT
0°	50°	38.6	60	46,0
5°	45°	42.6		46,1
10°	40°	46.7		46,7
15°	35°	50.9		47,6
20°	30°	55.3		48,9
25°	25°	60.0		50,7
30°	20°	65.1		53,1
35°	15°	70.8		56,1
40°	10°	77.1		60,0
45°	5°	84.5		65,0
50°	0°	93.3		71,5
55°		104.6		85,7
60°		120.0		103,9
65°		94.6		40
70°		73.1	25	68,7
75°	96.6		93,3	

Catalog No.	加工力 Working Force N
KACVG400-00	39552
KACVG400-05	39301
KACVG400-10	39034
KACVG400-15	38752
KACVG400-20	38457
KACVG400-25	38152
KACVG400-30	37839
KACVG400-35	37521
KACVG400-40	37199
KACVG400-45	36876
KACVG400-50	36556
KACVG400-55	40956
KACVG400-60	46952
KACVG400-65	55539
KACVG400-70	68610
KACVG400-75	90647

规格 Type	θ	弹簧力 Sping Force N		氮气缸 Gas Spring
		初压 Initial Load	终压 Final Load	
GK	00°-60°	14100	20100	X 750-080-TD (Kaller)
	65°			X 750-063-TD (Kaller)
	70°-75°			X 750-050-TD (Kaller)
GD	00°-60°	14100	19800	U 0800080 (Dadco)
	65°		18450	U 0800063 (Dadco)
	70°-75°			U 0800050 (Dadco)



序号 No.	名称 Description	数量 Qty	材料和备注 Material and Remark
1	驱动块 Cam Driver	1	QT450
2	滑块 Cam Slider	1	QT450
5	底座 Cam Holder	1	QT450
6	压板 Cover Wear Plate	1	45
7	导板 Wear Plate	2	铜合金Bronze
14	挡板 Stop Block	1	45
15	聚氨酯 Urethane	4	聚氨酯Urethane
17	安全挂钩 Softg Block	2	45
23	安全挡板 Safety Plate	1	45
24	导板 Wear Plate	2	铜合金Bronze
27	导板 Wear Plate	2	铜合金Bronze
28	导板 Wear Plate	4	铜合金Bronze
30	强制拉回 Positive Return Follower	2	45
37	V型导板 V Guide Plate	1	45
42	氮气弹簧 Gas Spring	3	规格Type

KACVG 400



Order **KACVG400** - θ - Type
KACVG400 - 10 - GK