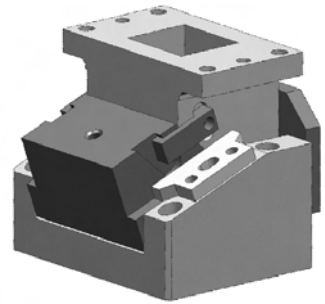
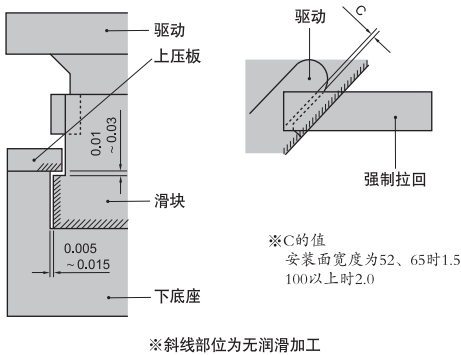


KBD/KBDA概要

- 下置通用式。
- 刚性较高的盒式导向的滑动方式。
- 安装面宽度52、65、100、150、200、250
300~600(100mm间隙)。
- 角度 $0^{\circ} \sim 20^{\circ}$ ， 5° 间隔(52~150宽)



■ 滑块结构和强制拉回结构



- 完全盒式导向的滑动方式，滑块和下底座的间隙单侧加工到0.005~0.015。
- 另外上压板和滑块的间隙加工到0.01~0.03。
- 强制拉回没有管理间隙，只具备复位的性能。

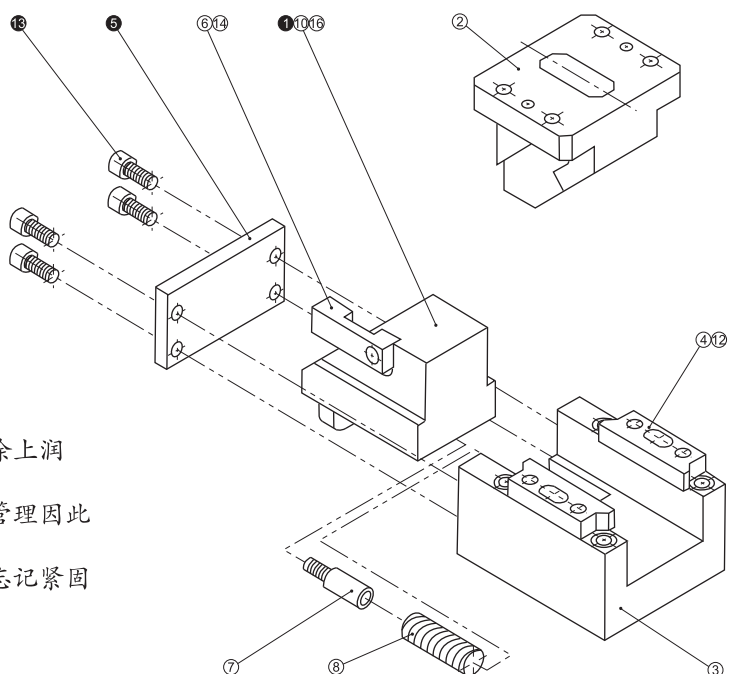
■ KBD/KBDA52 ~ 300的结构和拆解和装配

● KBD/KBDA52 ~ 300的拆解方法

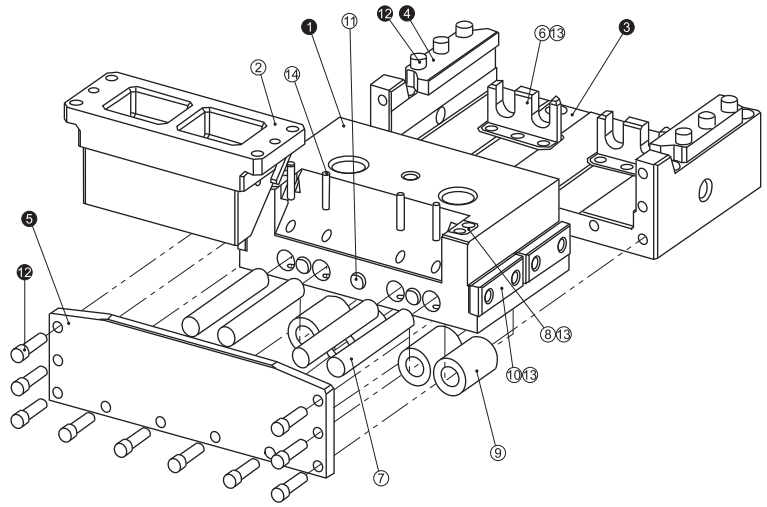
- 1、取下⑬卸下⑤。
- 2、从后方拔出①。

● KBD/KBDA52 ~ 300的装配方法

- 1) 按与拆解相反的顺序装配。
 - ◆ 充分确认滑动部位是否无异物后涂上润滑脂并进行装配。
 - ◆ 由于对滑块和上底座的间隙进行管理因此要确认刻印的序号后进行装配。
 - ◆ 拆解、装配后，要充分注意不要忘记紧固螺栓。



■ KBD/KBDA400 · 500 · 600的结构和拆解、装配



● KBD/KBDA400 · 500 · 600的拆解方法

- 1、松开⑫卸下⑤。
- 2、松开⑫卸下④。
- 3、将①从上方移动，从③拔出。

● KBD/KBDA400 · 500 · 600的装配方法

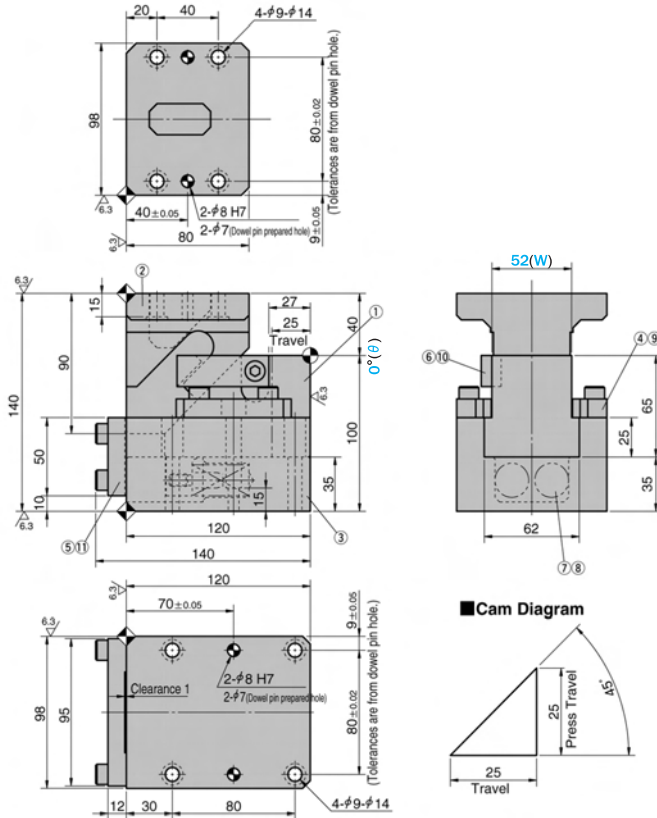
- 1)按与拆解相反的顺序装配。
 - ◆充分确认滑动部位是否无异物后涂上润滑脂并进行装配。
 - ◆由于对滑块和上底座的间隙进行管理因此要确认刻印的序号后进行装配。
 - ◆拆解、装配后，要充分注意不要忘记紧固螺栓。

KBDA52-00-25

销孔铰完(Dowel Pin Hole Finished)

KBD52-00-25

销孔预钻孔(Dowel Pin Prepared Hole)



零部件表 Table of Components

代号 No.	名称 Description	数量 Qty	材料和备注 Material and Remark
①	滑动块 Cam Slider	1	HT300
②	驱动块 Cam Driver	1	HT300
③	底座 Cam Holder	1	HT300
④	压板 Upper Plate	2	45
⑤	挡板 Stopper Plate	1	45
⑥	强制拉回 Positive Return Follower	1	45
⑦	弹簧销 Spring Guide Pin	2	45
⑧	螺旋弹簧 Coil Spring	2	TF20-70
⑨	内六角螺钉 Hexagon Socket Head Bolt	4	M8×25
⑩	内六角螺钉 Hexagon Socket Head Bolt	1	M8×20
⑪	内六角螺钉 Hexagon Socket Head Bolt	4	M8×30

加工力 Working Force kN(tonf)		弹簧力 Spring Force N(kgf)		总重量 Total Weight kg	代号 Catalog No.	(W)	(θ)	行程 Travel S	SANKYO 代号对照 Catalog No.
标准加工力 (100万回) Standard Working Force (one million strokes)	允许加工力 (30万回) Allowable Working Force (300,000 strokes)	初压 Initial Load	终压 Final Load						
14.7 (1.5)	29.4 (3.0)	144.0 (14.7)	594.0 (60.7)	8.3	KBDA KBD	52	00	25	SKCA SKC

KBD(A)
52



Order

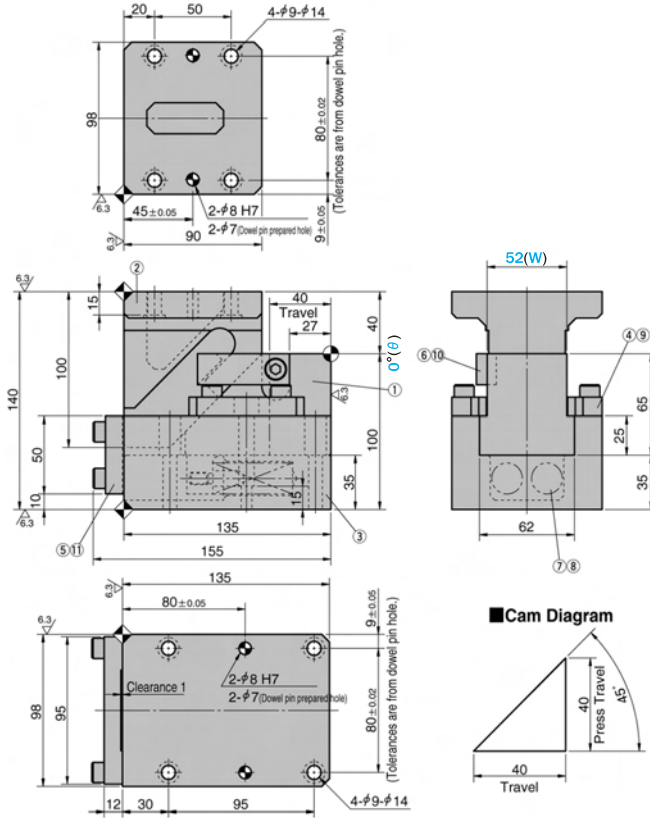
Catalog No. **KBDA** (W) **52** - (θ) **00** - S **25**

KBDA52-00-40

销孔铰完(Dowel Pin Hole Finished)

KBD52-00-40

销孔预钻孔(Dowel Pin Prepared Hole)



零部件表 Table of Components

代号 No.	名称 Description	数量 Qty	材料和备注 Material and Remark
①	滑动块 Cam Slider	1	HT300
②	驱动块 Cam Driver	1	HT300
③	底座 Cam Holder	1	HT300
④	压板 Upper Plate	2	45
⑤	挡板 Stopper Plate	1	45
⑥	强制拉回 Positive Return Follower	1	45
⑦	弹簧销 Spring Guide Pin	2	45
⑧	螺旋弹簧 Coil Spring	2	TF20-100
⑨	内六角螺钉 Hexagon Socket Head Bolt	4	M8×25
⑩	内六角螺钉 Hexagon Socket Head Bolt	1	M8×20
⑪	内六角螺钉 Hexagon Socket Head Bolt	4	M8×30

加工力 Working Force kN(tonf)		弹簧力 Spring Force N(kgf)		总重量 Total Weight kg	代号 Catalog No.	(W)	(θ)	行程 Travel S	SANKYO 代号对照 Catalog No.
标准加工力 (100万回) Standard Working Force (one million strokes)	允许加工力 (30万回) Allowable Working Force (300,000 strokes)	初压 Initial Load	终压 Final Load						
14.7 (1.5)	29.4 (3.0)	100.8 (10.2)	604.8 (61.4)	9.1	KBDA KBD	52	00	40	SKCA SKC



Order

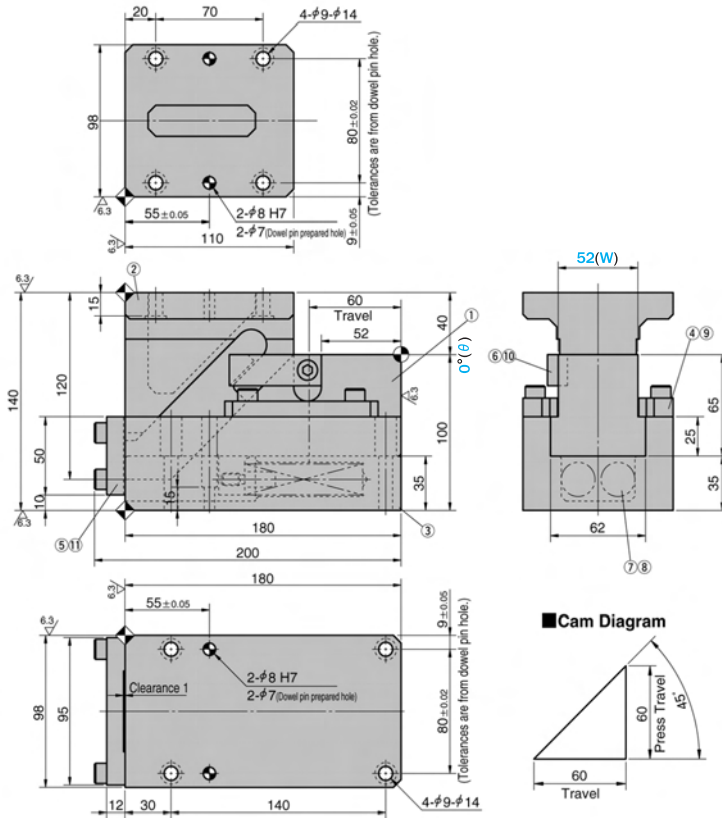
Catalog No. **KBDA** (W) **52** - (θ) **00** - S **40**

KBDA52-00-60

销孔铰完(Dowel Pin Hole Finished)

KBD52-00-60

销孔预钻孔(Dowel Pin Prepared Hole)



■ 零部件表
Table of Components

代号 No.	名称 Description	数量 Qty	材料和备注 Material and Remark
①	滑动块 Cam Slider	1	HT300
②	驱动块 Cam Driver	1	HT300
③	底座 Cam Holder	1	HT300
④	压板 Upper Plate	2	45
⑤	挡板 Stopper Plate	1	45
⑥	强制拉回 Positive Return Follower	1	45
⑦	弹簧销 Spring Guide Pin	2	45
⑧	螺旋弹簧 Coil Spring	2	TF20-150
⑨	内六角螺钉 Hexagon Socket Head Bolt	4	M8×25
⑩	内六角螺钉 Hexagon Socket Head Bolt	1	M8×20
⑪	内六角螺钉 Hexagon Socket Head Bolt	4	M8×30

加工力 Working Force kN(tonf)		弹簧力 Spring Force N(kgf)		总重量 Total Weight kg	代号 Catalog No.	(W)	(θ)	行程 Travel S	SANKYO 代号对照 Catalog No.
标准加工力 (100万回) Standard Working Force (one million strokes)	允许加工力 (30万回) Allowable Working Force (300,000 strokes)	初压 Initial Load	终压 Final Load						
14.7 (1.5)	29.4 (3.0)	109.2 (11.2)	613.2 (62.8)	11.9	KBDA KBD	52	00	60	SKCA SKC

KBD(A)
52



Order

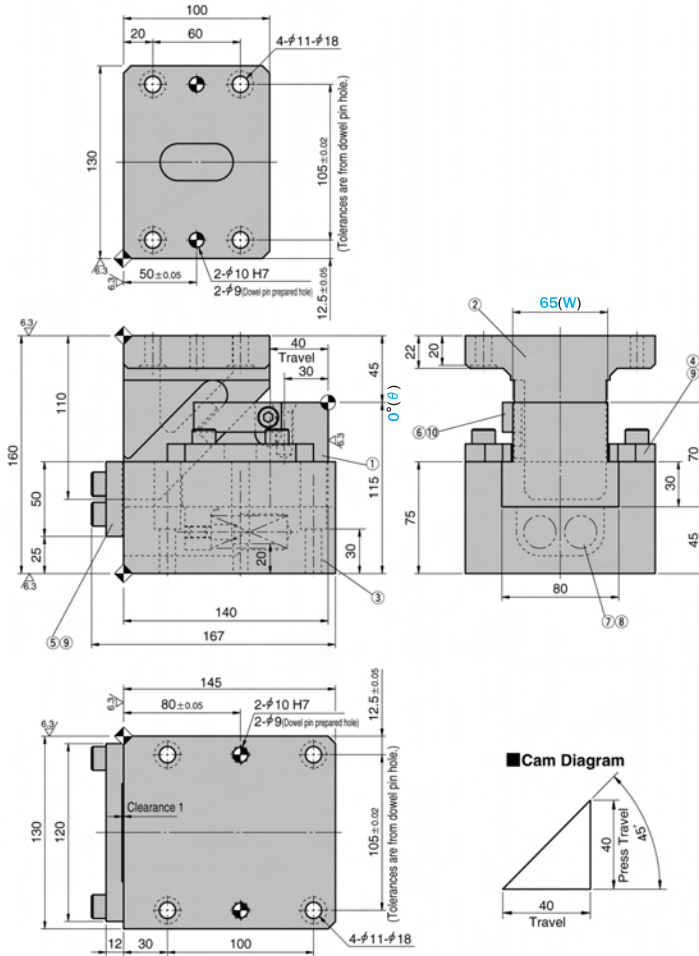
Catalog No. (W) - (θ) - S
KBDA 52 - 00 - 60

KBDA65-00-40

销孔铰完(Dowel Pin Hole Finished)

KBD65-00-40

销孔预钻孔(Dowel Pin Prepared Hole)



零部件表 Table of Components

代号 No.	名称 Description	数量 Qty	材料和备注 Material and Remark
①	滑动块 Cam Slider	1	HT300
②	驱动块 Cam Driver	1	HT300
③	底座 Cam Holder	1	HT300
④	压板 Upper Plate	2	45
⑤	挡板 Stopper Plate	1	45
⑥	强制拉回 Positive Return Follower	1	45
⑦	弹簧销 Spring Guide Pin	2	45
⑧	螺旋弹簧 Coil Spring	2	TF22-100
⑨	内六角螺钉 Hexagon Socket Head Bolt	8	M10×30
⑩	内六角螺钉 Hexagon Socket Head Bolt	1	M8×20

加工力 Working Force kN(tonf)		弹簧力 Spring Force N(kgf)		总重量 Total Weight kg	代号 Catalog No.	(W)	(θ)	行程 Travel S	SANKYO 代号对照 Catalog No.
标准加工力 (100万回) Standard Working Force (one million strokes)	允许加工力 (30万回) Allowable Working Force (300,000 strokes)	初压 Initial Load	终压 Final Load						
19.6 (2.0)	39.2 (4.0)	124.8 (12.8)	748.8 (76.8)	14.6	KBDA KBD	65	00	40	SKCA SKC



Order

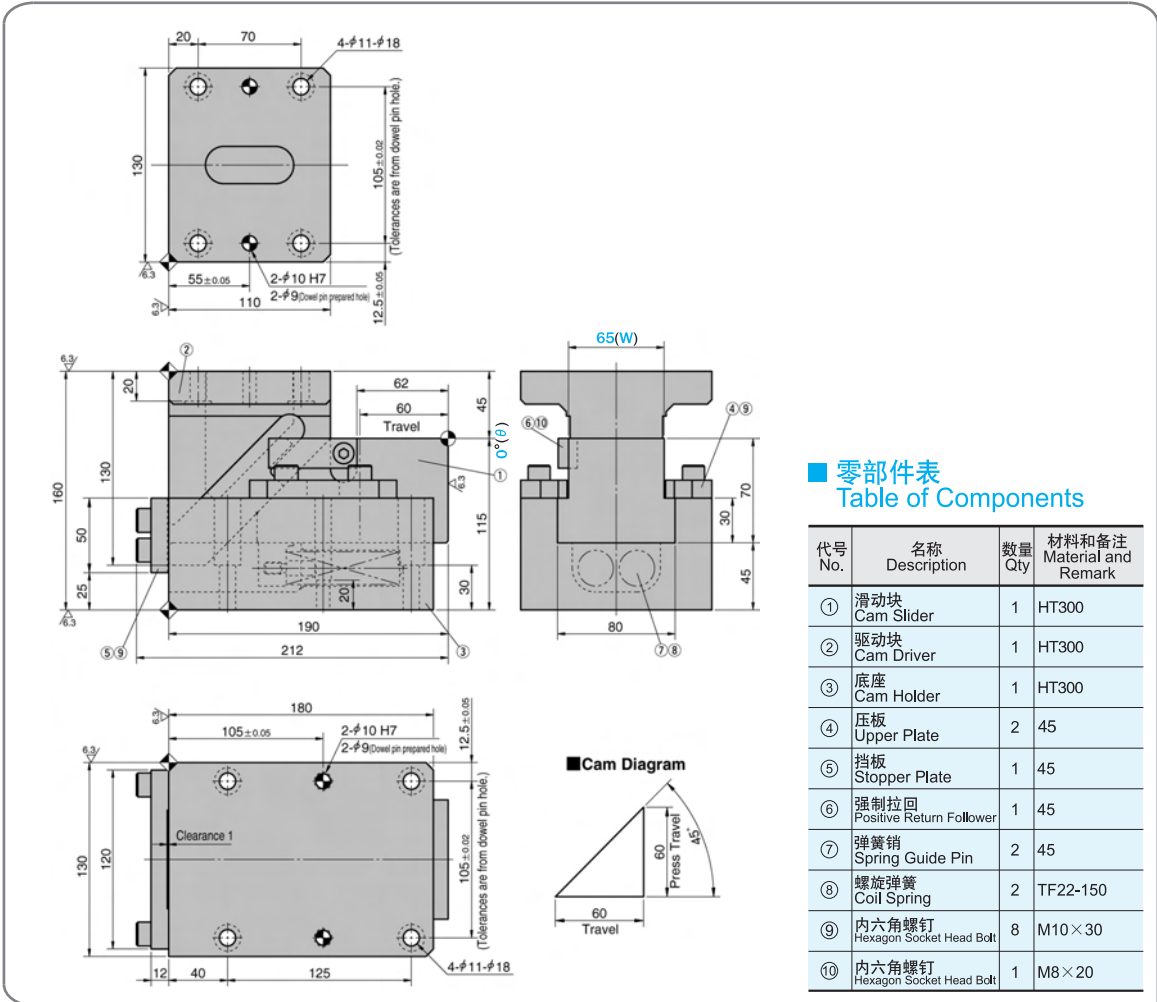
Catalog No. **KBDA** (W) **65** - (θ) **00** - S **40**

KBDA65-00-60

销孔铰完(Dowel Pin Hole Finished)

KBD65-00-60

销孔预钻孔(Dowel Pin Prepared Hole)



■ 零部件表
Table of Components

代号 No.	名称 Description	数量 Qty	材料和备注 Material and Remark
①	滑动块 Cam Slider	1	HT300
②	驱动块 Cam Driver	1	HT300
③	底座 Cam Holder	1	HT300
④	压板 Upper Plate	2	45
⑤	挡板 Stopper Plate	1	45
⑥	强制拉回 Positive Return Follower	1	45
⑦	弹簧销 Spring Guide Pin	2	45
⑧	螺旋弹簧 Coil Spring	2	TF22-150
⑨	内六角螺钉 Hexagon Socket Head Bolt	8	M10×30
⑩	内六角螺钉 Hexagon Socket Head Bolt	1	M8×20

加工力 Working Force kN(tonf)		弹簧力 Spring Force N(kgf)		总重量 Total Weight kg	代号 Catalog No.	(W)	(θ)	行程 Travel S	SANKYO 代号对照 Catalog No.
标准加工力 (100万回) Standard Working Force (one million strokes)	允许加工力 (30万回) Allowable Working Force (300,000 strokes)	初压 Initial Load	终压 Final Load						
19.6 (2.0)	39.2 (4.0)	135.2 (13.8)	759.2 (77.4)	18.2	KBDA KBD	65	00	60	SKCA SKC

KBD(A)
65



Order

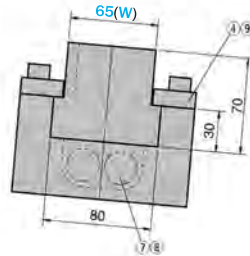
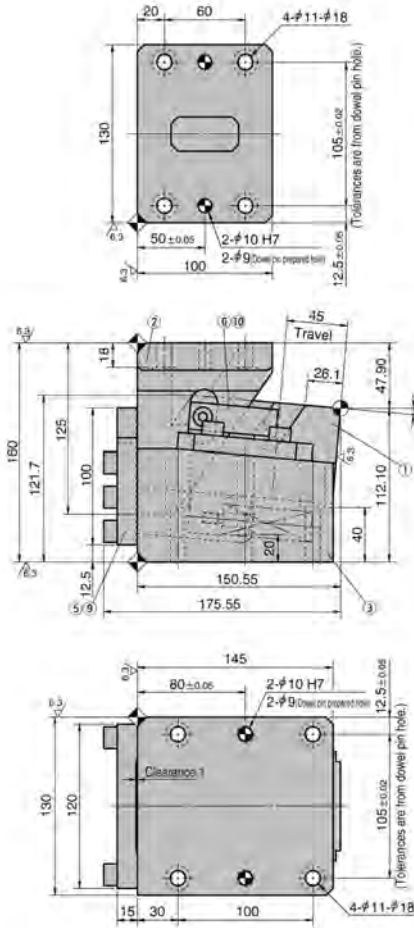
Catalog No. (W) - (θ) - S
KBDA 65 - 00 - 60

KBDA65-05-45

销孔较完(Dowel Pin Hole Finished)

KBD65-05-45

销孔预钻孔(Dowel Pin Prepared Hole)



Cam Diagram



零部件表 Table of Components

代号 No.	名称 Description	数量 Qty	材料和备注 Material and Remark
①	滑动块 Cam Slider	1	HT300
②	驱动块 Cam Driver	1	HT300
③	底座 Cam Holder	1	HT300
④	压板 Upper Plate	2	45
⑤	挡板 Stopper Plate	1	45
⑥	强制拉回 Positive Return Follower	1	45
⑦	弹簧销 Spring Guide Pin	2	45
⑧	螺旋弹簧 Coil Spring	2	TF22-125
⑨	内六角螺钉 Hexagon Socket Head Bolt	10	M10×30
⑩	内六角螺钉 Hexagon Socket Head Bolt	1	M8×20

加工力 Working Force kN(tonf)		弹簧力 Spring Force N(kgf)		总重量 Total Weight kg	代号 Catalog No.	(W)	(θ)	行程 Travel S	SANKYO 代号对照 Catalog No.
标准加工力 (100万回) Standard Working Force (one million strokes)	允许加工力 (30万回) Allowable Working Force (300,000 strokes)	初压 Initial Load	终压 Final Load						
19.6 (2.0)	39.2 (4.0)	176.4 (17.9)	743.4 (75.5)	19.0	KBDA KBD	65	05	45	SKCA SKC



Order

Catalog No. (W) - (θ) - S
KBDA 65 - 05 - 45

KBDA65-05-70

销孔铰完(Dowel Pin Hole Finished)

KBD65-05-70

销孔预钻孔(Dowel Pin Prepared Hole)

**■ 零部件表
Table of Components**

代号 No.	名称 Description	数量 Qty	材料和备注 Material and Remark
①	滑动块 Cam Slider	1	HT300
②	驱动块 Cam Driver	1	HT300
③	底座 Cam Holder	1	HT300
④	压板 Upper Plate	2	45
⑤	挡板 Stopper Plate	1	45
⑥	强制拉回 Positive Return Follower	1	45
⑦	弹簧销 Spring Guide Pin	2	45
⑧	螺旋弹簧 Coil Spring	2	TF25-175
⑨	内六角螺钉 Hexagon Socket Head Bolt	10	M10×30
⑩	内六角螺钉 Hexagon Socket Head Bolt	1	M8×20

■ Cam Diagram

加工力 Working Force kN(tonf)		弹簧力 Spring Force N(kgf)		总重量 Total Weight kg	代号 Catalog No.	(W)	(θ)	行程 Travel S	SANKYO 代号对照 Catalog No.
标准加工力 (100万回) Standard Working Force (one million strokes)	允许加工力 (30万回) Allowable Working Force (300,000 strokes)	初压 Initial Load	终压 Final Load						
19.6 (2.0)	39.2 (4.0)	190.4 (19.4)	974.4 (99.2)	22.2	KBDA KBD	65	05	70	SKCA SKC

KBD(A)
65



Order

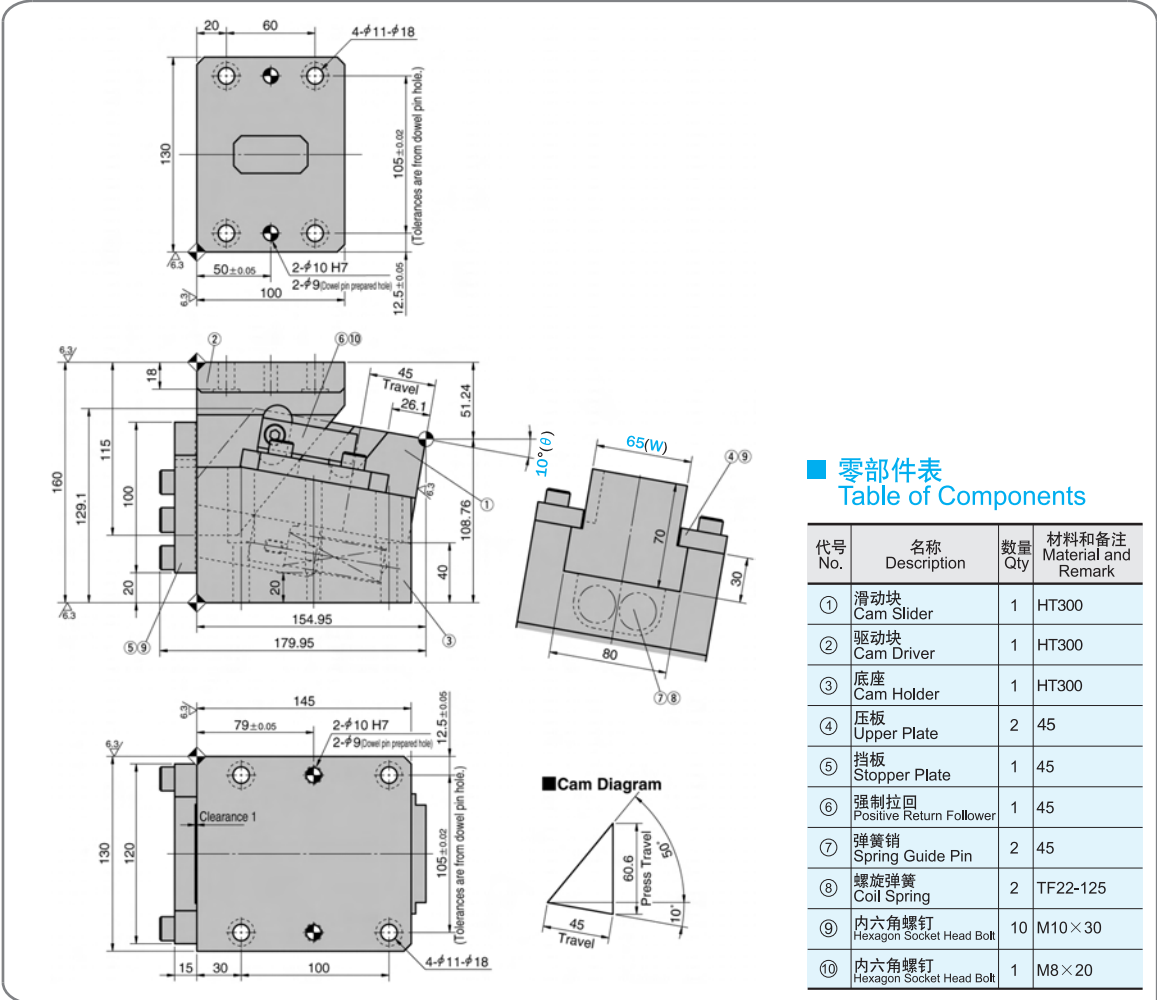
Catalog No. (W) - (θ) - S
KBDA 65 - 05 - 70

KBDA65-10-45

销孔铰完(Dowel Pin Hole Finished)

KBD65-10-45

销孔预钻孔(Dowel Pin Prepared Hole)



零部件表 Table of Components

代号 No.	名称 Description	数量 Qty	材料和备注 Material and Remark
①	滑动块 Cam Slider	1	HT300
②	驱动块 Cam Driver	1	HT300
③	底座 Cam Holder	1	HT300
④	压板 Upper Plate	2	45
⑤	挡板 Stopper Plate	1	45
⑥	强制拉回 Positive Return Follower	1	45
⑦	弹簧销 Spring Guide Pin	2	45
⑧	螺旋弹簧 Coil Spring	2	TF22-125
⑨	内六角螺钉 Hexagon Socket Head Bolt	10	M10×30
⑩	内六角螺钉 Hexagon Socket Head Bolt	1	M8×20

加工力 Working Force kN(tonf)		弹簧力 Spring Force N(kgf)		总重量 Total Weight kg	代号 Catalog No.	(W)	(θ)	行程 Travel S	SANKYO 代号对照 Catalog No.
标准加工力 (100万回) Standard Working Force (one million strokes)	允许加工力 (30万回) Allowable Working Force (300,000 strokes)	初压 Initial Load	终压 Final Load						
19.6 (2.0)	39.2 (4.0)	176.4 (17.9)	743.4 (75.5)	16.2	KBDA KBD	65	10	45	SKCA SKC



Order

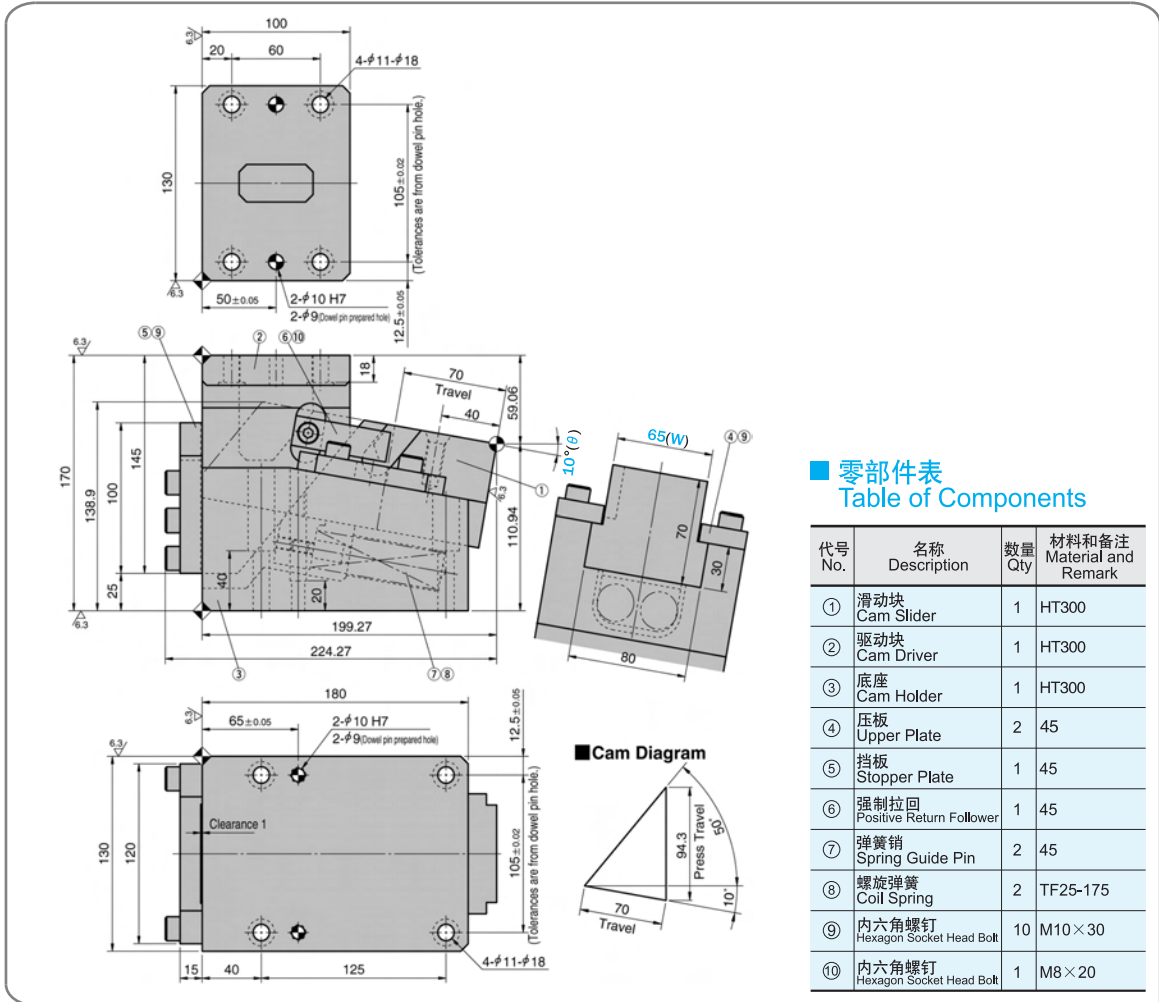
Catalog No. (W) - (θ) - S
KBDA 65 - 10 - 45

KBDA65-10-70

销孔铰完(Dowel Pin Hole Finished)

KBD65-10-70

销孔预钻孔(Dowel Pin Prepared Hole)



加工力 Working Force kN(tonf)		弹簧力 Spring Force N(kgf)		总重量 Total Weight kg	代号 Catalog No.	(W)	(θ)	行程 Travel S	SANKYO 代号对照 Catalog No.
标准加工力 (100万回) Standard Working Force (one million strokes)	允许加工力 (30万回) Allowable Working Force (300,000 strokes)	初压 Initial Load	终压 Final Load						
19.6 (2.0)	39.2 (4.0)	190.4 (19.4)	974.4 (99.2)	20.5	KBDA KBD	65	10	70	SKCA SKC



Order

Catalog No. **KBDA** (W) **65** - (θ) **10** - S **70**

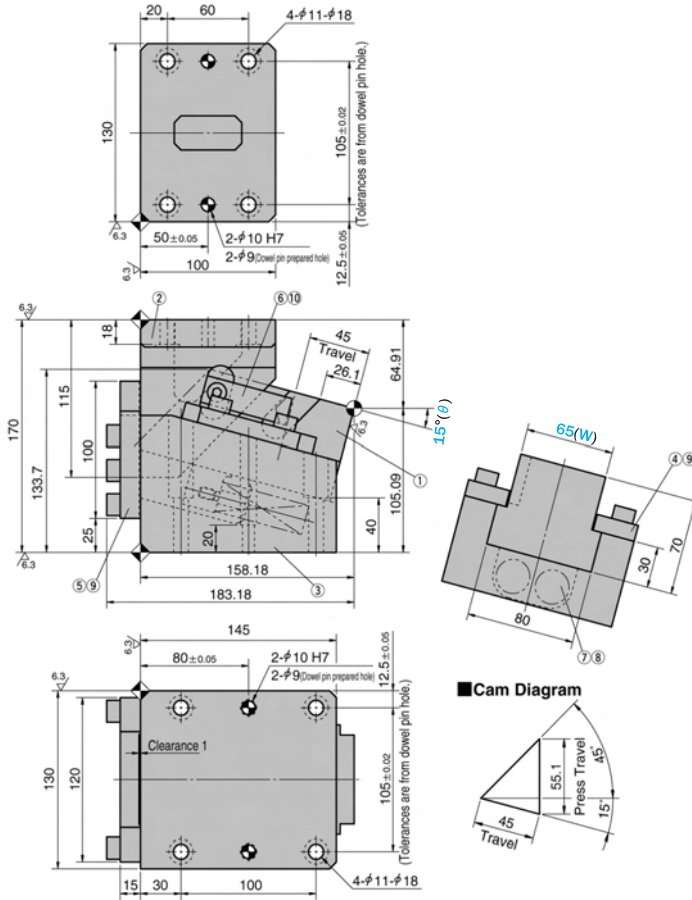
KBD(A)
65

KBDA65-15-45

销孔铰完(Dowel Pin Hole Finished)

KBD65-15-45

销孔预钻孔(Dowel Pin Prepared Hole)



零部件表 Table of Components

代号 No.	名称 Description	数量 Qty	材料和备注 Material and Remark
①	滑动块 Cam Slider	1	HT300
②	驱动块 Cam Driver	1	HT300
③	底座 Cam Holder	1	HT300
④	压板 Upper Plate	2	45
⑤	挡板 Stopper Plate	1	45
⑥	强制拉回 Positive Return Follower	1	45
⑦	弹簧销 Spring Guide Pin	2	45
⑧	螺旋弹簧 Coil Spring	2	TF22-125
⑨	内六角螺钉 Hexagon Socket Head Bolt	10	M10×30
⑩	内六角螺钉 Hexagon Socket Head Bolt	1	M8×20

加工力 Working Force kN(tonf)		弹簧力 Spring Force N(kgf)		总重量 Total Weight kg	代号 Catalog No.	(W)	(θ)	行程 Travel S	SANKYO 代号对照 Catalog No.
标准加工力 (100万回) Standard Working Force (one million strokes)	允许加工力 (30万回) Allowable Working Force (300,000 strokes)	初压 Initial Load	终压 Final Load						
19.6 (2.0)	39.2 (4.0)	176.4 (17.9)	743.4 (75.5)	22.3	KBDA KBD	65	15	45	SKCA SKC



Order

Catalog No. **KBDA** (W) **65** - (θ) **15** - S **45**

KBDA65-15-70

销孔较完(Dowel Pin Hole Finished)

KBD65-15-70

销孔预钻孔(Dowel Pin Prepared Hole)

零部件表
Table of Components

代号 No.	名称 Description	数量 Qty	材料和备注 Material and Remark
①	滑动块 Cam Slider	1	HT300
②	驱动块 Cam Driver	1	HT300
③	底座 Cam Holder	1	HT300
④	压板 Upper Plate	2	45
⑤	挡板 Stopper Plate	1	45
⑥	强制拉回 Positive Return Follower	1	45
⑦	弹簧销 Spring Guide Pin	2	45
⑧	螺旋弹簧 Coil Spring	2	TF25-175
⑨	内六角螺钉 Hexagon Socket Head Bolt	10	M10×30
⑩	内六角螺钉 Hexagon Socket Head Bolt	1	M8×20

加工力 Working Force kN(tonf)		弹簧力 Spring Force N(kgf)		总重量 Total Weight kg	代号 Catalog No.	(W)	(θ)	行程 Travel S	SANKYO 代号对照 Catalog No.
标准加工力 (100万回) Standard Working Force (one million strokes)	允许加工力 (30万回) Allowable Working Force (300,000 strokes)	初压 Initial Load	终压 Final Load						
19.6 (2.0)	39.2 (4.0)	190.4 (19.4)	974.4 (99.2)	22.0	KBDA KBD	65	15	70	SKCA SKC

KBD(A)
65



Order

Catalog No. **KBDA** (W) **65** - (θ) **15** - S **70**

KBDA65-20-45

销孔铰完(Dowel Pin Hole Finished)

KBD65-20-45

销孔预钻孔(Dowel Pin Prepared Hole)

■ 零部件表
Table of Components

代号 No.	名称 Description	数量 Qty	材料和备注 Material and Remark
①	滑动块 Cam Slider	1	HT300
②	驱动块 Cam Driver	1	HT300
③	底座 Cam Holder	1	HT300
④	压板 Upper Plate	2	45
⑤	挡板 Stopper Plate	1	45
⑥	强制拉回 Positive Return Follower	1	45
⑦	弹簧销 Spring Guide Pin	2	45
⑧	螺旋弹簧 Coil Spring	2	TF22-125
⑨	内六角螺钉 Hexagon Socket Head Bolt	10	M10×30
⑩	内六角螺钉 Hexagon Socket Head Bolt	1	M8×20

加工力 Working Force kN(tonf)		弹簧力 Spring Force N(kgf)		总重量 Total Weight kg	代号 Catalog No.	(W)	(θ)	行程 Travel S	SANKYO 代号对照 Catalog No.
标准加工力 (100万回) Standard Working Force (one million strokes)	允许加工力 (30万回) Allowable Working Force (300,000 strokes)	初压 Initial Load	终压 Final Load						
19.6 (2.0)	39.2 (4.0)	176.4 (17.9)	743.4 (75.5)	20.8	KBDA KBD	65	20	45	SKCA SKC



Order

Catalog No. **KBDA** (W) **65** - (θ) **20** - S **45**

KBDA65-20-70

销孔铰完(Dowel Pin Hole Finished)

KBD65-20-70

销孔预钻孔(Dowel Pin Prepared Hole)

零部件表
Table of Components

代号 No.	名称 Description	数量 Qty	材料和备注 Material and Remark
①	滑动块 Cam Slider	1	HT300
②	驱动块 Cam Driver	1	HT300
③	底座 Cam Holder	1	HT300
④	压板 Upper Plate	2	45
⑤	挡板 Stopper Plate	1	45
⑥	强制拉回 Positive Return Follower	1	45
⑦	弹簧销 Spring Guide Pin	2	45
⑧	螺旋弹簧 Coil Spring	2	TF25-175
⑨	内六角螺钉 Hexagon Socket Head Bolt	10	M10×30
⑩	内六角螺钉 Hexagon Socket Head Bolt	1	M8×20

加工力 Working Force kN(tonf)		弹簧力 Spring Force N(kgf)		总重量 Total Weight kg	代号 Catalog No.	(W)	(θ)	行程 Travel S	SANKYO 代号对照 Catalog No.
标准加工力 (100万回) Standard Working Force (one million strokes)	允许加工力 (30万回) Allowable Working Force (300,000 strokes)	初压 Initial Load	终压 Final Load						
19.6 (2.0)	39.2 (4.0)	190.4 (19.4)	974.4 (99.2)	21.0	KBDA KBD	65	20	70	SKCA SKC

KBD(A)
65



Order

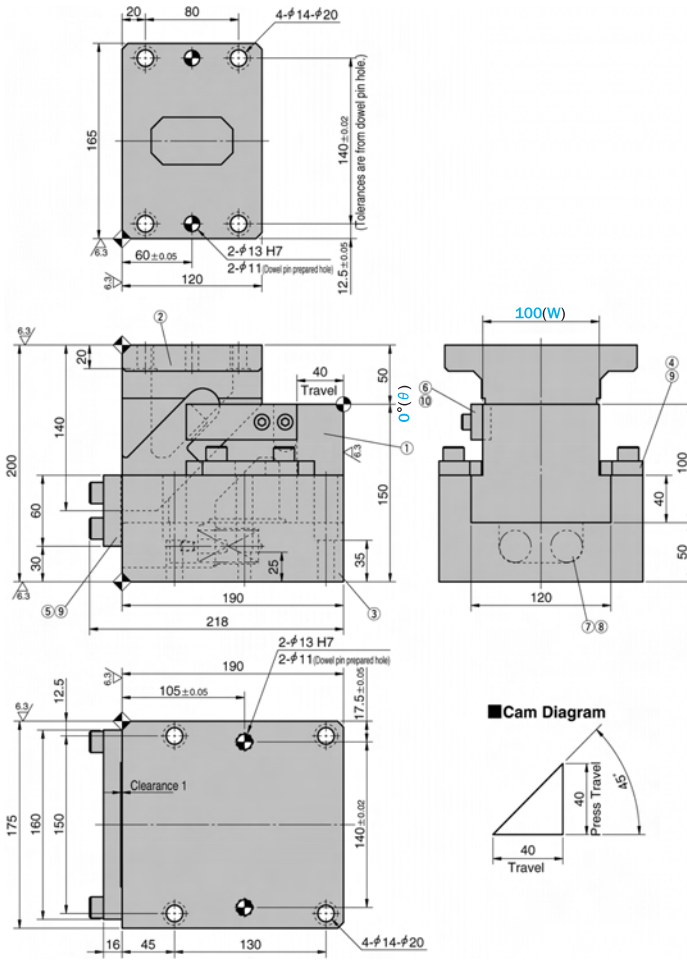
Catalog No. (W) - (θ) - S
KBDA 65 - 20 - 70

KBDA100-00-40

销孔铰完(Dowel Pin Hole Finished)

KBD100-00-40

销孔预钻孔(Dowel Pin Prepared Hole)



■ 零部件表
Table of Components

代号 No.	名称 Description	数量 Qty	材料和备注 Material and Remark
①	滑动块 Cam Slider	1	HT300
②	驱动块 Cam Driver	1	HT300
③	底座 Cam Holder	1	HT300
④	压板 Upper Plate	2	45
⑤	挡板 Stopper Plate	1	45
⑥	强制拉回 Positive Return Follower	1	45
⑦	弹簧销 Spring Guide Pin	2	45
⑧	螺旋弹簧 Coil Spring	2	TF27-100
⑨	内六角螺钉 Hexagon Socket Head Bolt	8	M12×35
⑩	内六角螺钉 Hexagon Socket Head Bolt	1	M8×30

加工力 Working Force kN(tonf)		弹簧力 Spring Force N(kgf)		滑块重量 Slider Weight kg	总重量 Total Weight kg	代号 Catalog No.	(W)	(θ)	行程 Travel S	SANKYO 代号对照 Catalog No.
标准加工力 (100万回) Standard Working Force (one million strokes)	允许加工力 (30万回) Allowable Working Force (300,000 strokes)	初压 Initial Load	终压 Final Load							
29.4 (3.0)	58.8 (6.0)	188.8 (19.2)	1132.8 (115.2)	9.5	31.9	KBDA KBD	100	00	40	SKCA SKC



Order

Catalog No. (W) - (θ) - S
KBDA 100 - 00 - 40

KBDA100-00-60

销孔铰完(Dowel Pin Hole Finished)

KBD100-00-60

销孔预钻孔(Dowel Pin Prepared Hole)

**■ 零部件表
Table of Components**

代号 No.	名称 Description	数量 Qty	材料和备注 Material and Remark
①	滑动块 Cam Slider	1	HT300
②	驱动块 Cam Driver	1	HT300
③	底座 Cam Holder	1	HT300
④	压板 Upper Plate	2	45
⑤	挡板 Stopper Plate	1	45
⑥	强制拉回 Positive Return Follower	1	45
⑦	弹簧销 Spring Guide Pin	2	45
⑧	螺旋弹簧 Coil Spring	2	TF27-150
⑨	内六角螺钉 Hexagon Socket Head Bolt	8	M12×35
⑩	内六角螺钉 Hexagon Socket Head Bolt	2	M8×30

加工力 Working Force kN(tonf)		弹簧力 Spring Force N(kgf)		滑块重量 Slider Weight kg	总重量 Total Weight kg	代号 Catalog No.	(W)	(θ)	行程 Travel S	SANKYO 代号对照 Catalog No.
标准加工力 (100万回) Standard Working Force (one million strokes)	允许加工力 (30万回) Allowable Working Force (300,000 strokes)	初压 Initial Load	终压 Final Load							
29.4 (3.0)	58.8 (6.0)	202.8 (20.8)	1138.8 (116.8)	9.5	33.2	KBDA KBD	100	00	60	SKCA SKC



Order

Catalog No. **(W) - (θ) - S**
KBDA 100 - 00 - 60

KBD(A)
100

KBDA100-00-80

销孔铰完(Dowel Pin Hole Finished)

KBD100-00-80

销孔预钻孔(Dowel Pin Prepared Hole)

Technical drawings showing dimensions for KBDA100-00-80 and KBD100-00-80. Dimensions include 20, 110, 165, 140±0.02, 75±0.05, 150, 12.5±0.05, 2-φ13 H7, 2-φ11 (Dowel pin prepared hole), 200, 115, 170, 80, 70, 50, 150, 35, 250, 277, 6.3, 10, 175, 165, 150, 140±0.02, 17.5±0.05, 135±0.05, 220, 2-φ13 H7, 2-φ11 (Dowel pin prepared hole), 15, 45, 160, 4-φ14-φ20, 6.3, 100(W), 120, 100, 40, 50, 7, 8, 6, 10, 4, 9, 5, 3, 2, 1, 0°(θ), 80, Press Travel, 15°, Travel.

■ 零件表
Table of Components

代号 No.	名称 Description	数量 Qty	材料和备注 Material and Remark
①	滑动块 Cam Slider	1	HT300
②	驱动块 Cam Driver	1	HT300
③	底座 Cam Holder	1	HT300
④	压板 Upper Plate	2	45
⑤	挡板 Stopper Plate	1	45
⑥	强制拉回 Positive Return Follower	1	45
⑦	弹簧销 Spring Guide Pin	2	45
⑧	螺旋弹簧 Coil Spring	2	TF30-200
⑨	内六角螺钉 Hexagon Socket Head Bolt	8	M12×35
⑩	内六角螺钉 Hexagon Socket Head Bolt	2	M8×30

加工力 Working Force kN(tonf)		弹簧力 Spring Force N(kgf)		滑块重量 Slider Weight kg	总重量 Total Weight kg	代号 Catalog No.	(W)	(θ)	行程 Travel S	SANKYO 代号对照 Catalog No.
标准加工力 (100万回) Standard Working Force (one million strokes)	允许加工力 (30万回) Allowable Working Force (300,000 strokes)	初压 Initial Load	终压 Final Load							
29.4 (3.0)	58.8 (6.0)	170.4 (17.3)	1306.4 (132.5)	11.9	38.7	KBDA KBD	100	00	80	SKCA SKC



Order

Catalog No. **(W) - (θ) - S**
KBDA 100 - 00 - 80

KBDA100-05-45

销孔铰完(Dowel Pin Hole Finished)

KBD100-05-45

销孔预钻孔(Dowel Pin Prepared Hole)

**■ 零部件表
Table of Components**

代号 No.	名称 Description	数量 Qty	材料和备注 Material and Remark
①	滑动块 Cam Slider	1	HT300
②	驱动块 Cam Driver	1	HT300
③	底座 Cam Holder	1	HT300
④	压板 Upper Plate	2	45
⑤	挡板 Stopper Plate	1	45
⑥	强制拉回 Positive Return Follower	1	45
⑦	弹簧销 Spring Guide Pin	2	45
⑧	螺旋弹簧 Coil Spring	2	TF27-125
⑨	内六角螺钉 Hexagon Socket Head Bolt	8	M12×35
⑩	内六角螺钉 Hexagon Socket Head Bolt	2	M8×25

■ Cam Diagram

加工力 Working Force kN(tonf)		弹簧力 Spring Force N(kgf)		滑块重量 Slider Weight kg	总重量 Total Weight kg	代号 Catalog No.	(W)	(θ)	行程 Travel S	SANKYO 代号对照 Catalog No.
标准加工力 (100万回) Standard Working Force (one million strokes)	允许加工力 (30万回) Allowable Working Force (300,000 strokes)	初压 Initial Load	终压 Final Load							
39.2 (4.0)	78.4 (8.0)	263.2 (26.9)	1109.2 (113.3)	7.2	33.0	KBDA KBD	100	05	45	SKCA SKC

KBD(A)
100



Order

Catalog No. **(W)** - **(θ)** - **S**
KBDA 100 - 05 - 45

KBDA100-05-70

销孔铰完(Dowel Pin Hole Finished)

KBD100-05-70

销孔预钻孔(Dowel Pin Prepared Hole)

Cam Diagram

Press Travel: 105.7
Travel: 70
5°

■ 零部件表
Table of Components

代号 No.	名称 Description	数量 Qty	材料和备注 Material and Remark
①	滑动块 Cam Slider	1	HT300
②	驱动块 Cam Driver	1	HT300
③	底座 Cam Holder	1	HT300
④	压板 Upper Plate	2	45
⑤	挡板 Stopper Plate	1	45
⑥	强制拉回 Positive Return Follower	1	45
⑦	弹簧销 Spring Guide Pin	2	45
⑧	螺旋弹簧 Coil Spring	2	TF27-175
⑨	内六角螺钉 Hexagon Socket Head Bolt	8	M12×35
⑩	内六角螺钉 Hexagon Socket Head Bolt	2	M8×25

加工力 Working Force kN(tonf)		弹簧力 Spring Force N(kgf)		滑块重量 Slider Weight kg	总重量 Total Weight kg	代号 Catalog No.	(W)	(θ)	行程 Travel S	SANKYO 代号对照 Catalog No.
标准加工力 (100万回) Standard Working Force (one million strokes)	允许加工力 (30万回) Allowable Working Force (300,000 strokes)	初压 Initial Load	终压 Final Load							
39.2 (4.0)	78.4 (8.0)	197.2 (20.0)	1149.2 (116.6)	8.2	38.0	KBDA KBD	100	05	70	SKCA SKC



Order

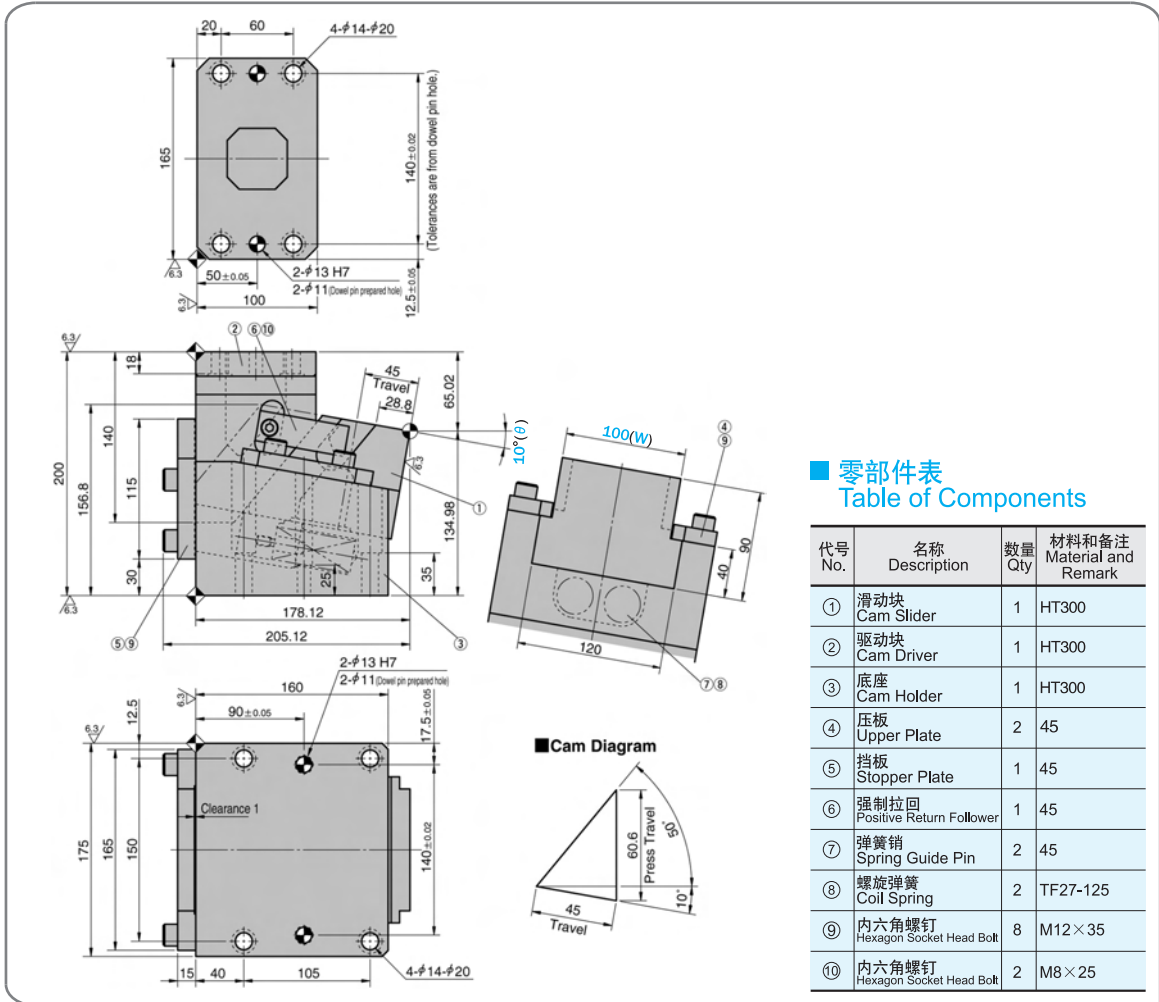
Catalog No. **(W)** - **(θ)** - **S**
KBDA 100 - 05 - 70

KBDA100-10-45

销孔铰完(Dowel Pin Hole Finished)

KBD100-10-45

销孔预钻孔(Dowel Pin Prepared Hole)



■ 零部件表
Table of Components

代号 No.	名称 Description	数量 Qty	材料和备注 Material and Remark
①	滑动块 Cam Slider	1	HT300
②	驱动块 Cam Driver	1	HT300
③	底座 Cam Holder	1	HT300
④	压板 Upper Plate	2	45
⑤	挡板 Stopper Plate	1	45
⑥	强制拉回 Positive Return Follower	1	45
⑦	弹簧销 Spring Guide Pin	2	45
⑧	螺旋弹簧 Coil Spring	2	TF27-125
⑨	内六角螺钉 Hexagon Socket Head Bolt	8	M12×35
⑩	内六角螺钉 Hexagon Socket Head Bolt	2	M8×25

加工力 Working Force kN(tonf)		弹簧力 Spring Force N(kgf)		滑块重量 Slider Weight kg	总重量 Total Weight kg	代号 Catalog No.	(W)	(θ)	行程 Travel S	SANKYO 代号对照 Catalog No.
标准加工力 (100万回) Standard Working Force (one million strokes)	允许加工力 (30万回) Allowable Working Force (300,000 strokes)	初压 Initial Load	终压 Final Load							
39.2 (4.0)	78.4 (8.0)	263.2 (26.9)	1109.2 (113.3)	7.2	28.4	KBDA KBD	100	10	45	SKCA SKC

KBD(A)
100



Order

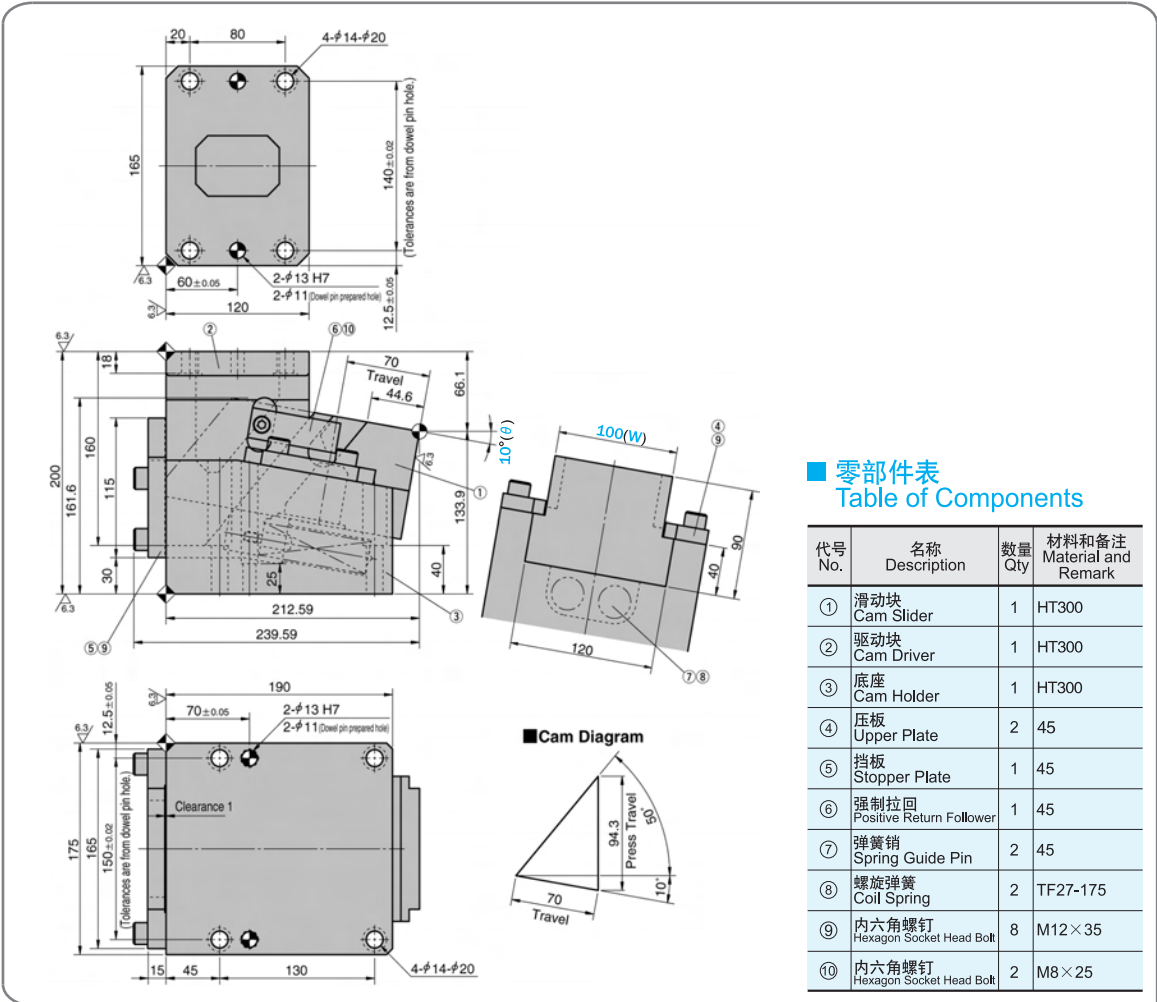
Catalog No. **(W) - (θ) - S**
KBDA 100 - 10 - 45

KBDA100-10-70

销孔铰完(Dowel Pin Hole Finished)

KBD100-10-70

销孔预钻孔(Dowel Pin Prepared Hole)



加工力 Working Force kN(tonf)		弹簧力 Spring Force N(kgf)		滑块重量 Slider Weight kg	总重量 Total Weight kg	代号 Catalog No.	(W)	(θ)	行程 Travel S	SANKYO 代号对照 Catalog No.
标准加工力 (100万回) Standard Working Force (one million strokes)	允许加工力 (30万回) Allowable Working Force (300,000 strokes)	初压 Initial Load	终压 Final Load							
39.2 (4.0)	78.4 (8.0)	197.2 (20.0)	1149.2 (116.6)	8.3	33.7	KBDA KBD	100	10	70	SKCA SKC



Order

Catalog No. **(W)** - **(θ)** - **S**
KBDA 100 - 10 - 70

KBDA100-15-45

销孔铰完(Dowel Pin Hole Finished)

KBD100-15-45

销孔预钻孔(Dowel Pin Prepared Hole)

零部件表
Table of Components

代号 No.	名称 Description	数量 Qty	材料和备注 Material and Remark
①	滑动块 Cam Slider	1	HT300
②	驱动块 Cam Driver	1	HT300
③	底座 Cam Holder	1	HT300
④	压板 Upper Plate	2	45
⑤	挡板 Stopper Plate	1	45
⑥	强制拉回 Positive Return Follower	1	45
⑦	弹簧销 Spring Guide Pin	2	45
⑧	螺旋弹簧 Coil Spring	2	TF27-125
⑨	内六角螺钉 Hexagon Socket Head Bolt	8	M12×35
⑩	内六角螺钉 Hexagon Socket Head Bolt	2	M8×25

加工力 Working Force kN(tonf)		弹簧力 Spring Force N(kgf)		滑块重量 Slider Weight kg	总重量 Total Weight kg	代号 Catalog No.	(W)	(θ)	行程 Travel S	SANKYO 代号对照 Catalog No.
标准加工力 (100万回) Standard Working Force (one million strokes)	允许加工力 (30万回) Allowable Working Force (300,000 strokes)	初压 Initial Load	终压 Final Load							
39.2 (4.0)	78.4 (8.0)	263.2 (26.9)	1109.2 (113.3)	7.2	33.0	KBDA KBD	100	15	45	SKCA SKC

KBD(A) 100



Order

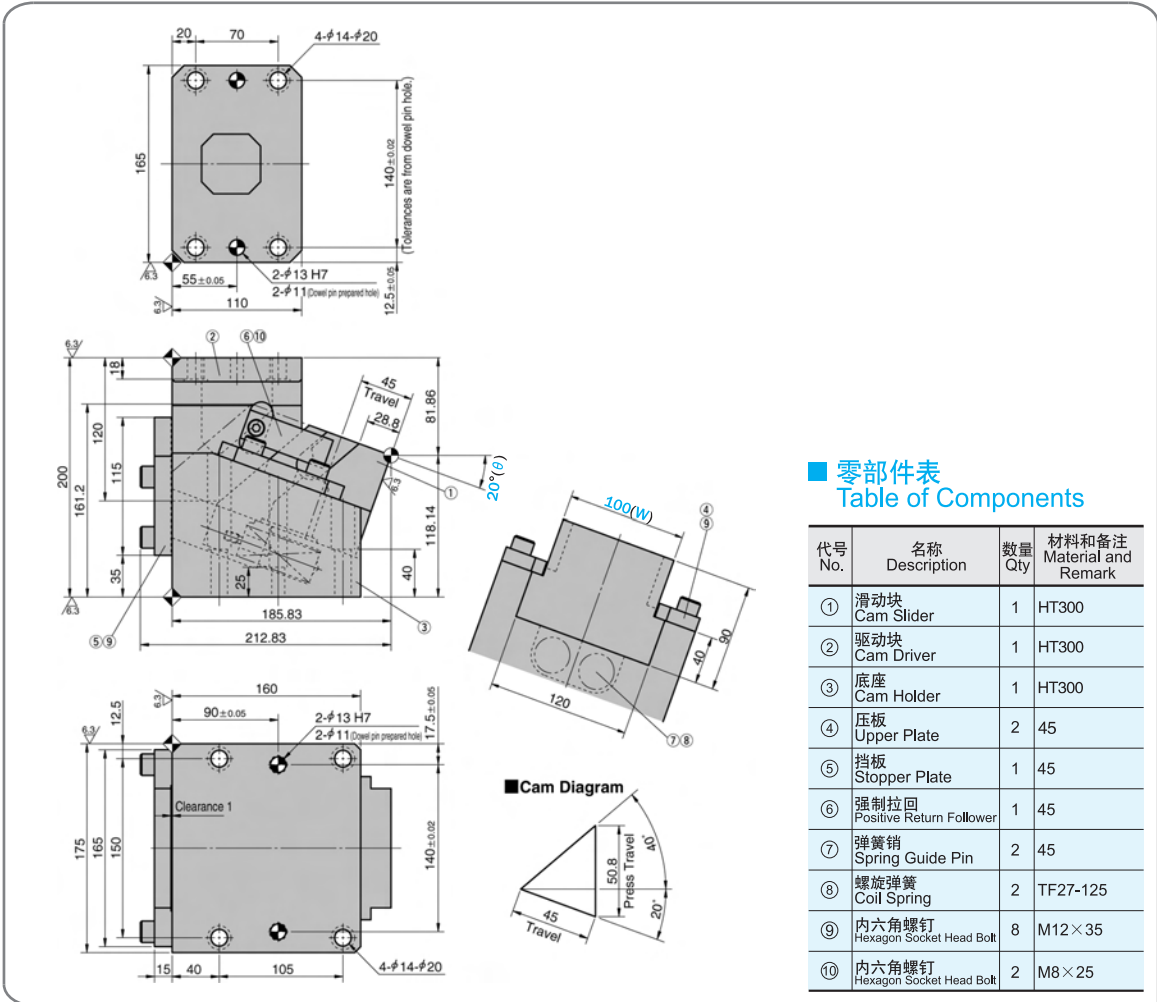
Catalog No. (W) - (θ) - S
KBDA 100 - 15 - 45

KBDA100-20-45

销孔铰完(Dowel Pin Hole Finished)

KBD100-20-45

销孔预钻孔(Dowel Pin Prepared Hole)



加工力 Working Force kN(tonf)		弹簧力 Spring Force N(kgf)		滑块重量 Slider Weight kg	总重量 Total Weight kg	代号 Catalog No.	(W)	(θ)	行程 Travel S	SANKYO 代号对照 Catalog No.
标准加工力 (100万回) Standard Working Force (one million strokes)	允许加工力 (30万回) Allowable Working Force (300,000 strokes)	初压 Initial Load	终压 Final Load							
39.2 (4.0)	78.4 (8.0)	263.2 (26.9)	1109.2 (113.3)	7.2	28.5	KBDA KBD	100	20	45	SKCA SKC



Order

Catalog No. (W) - (θ) - S
KBDA 100 - 20 - 45

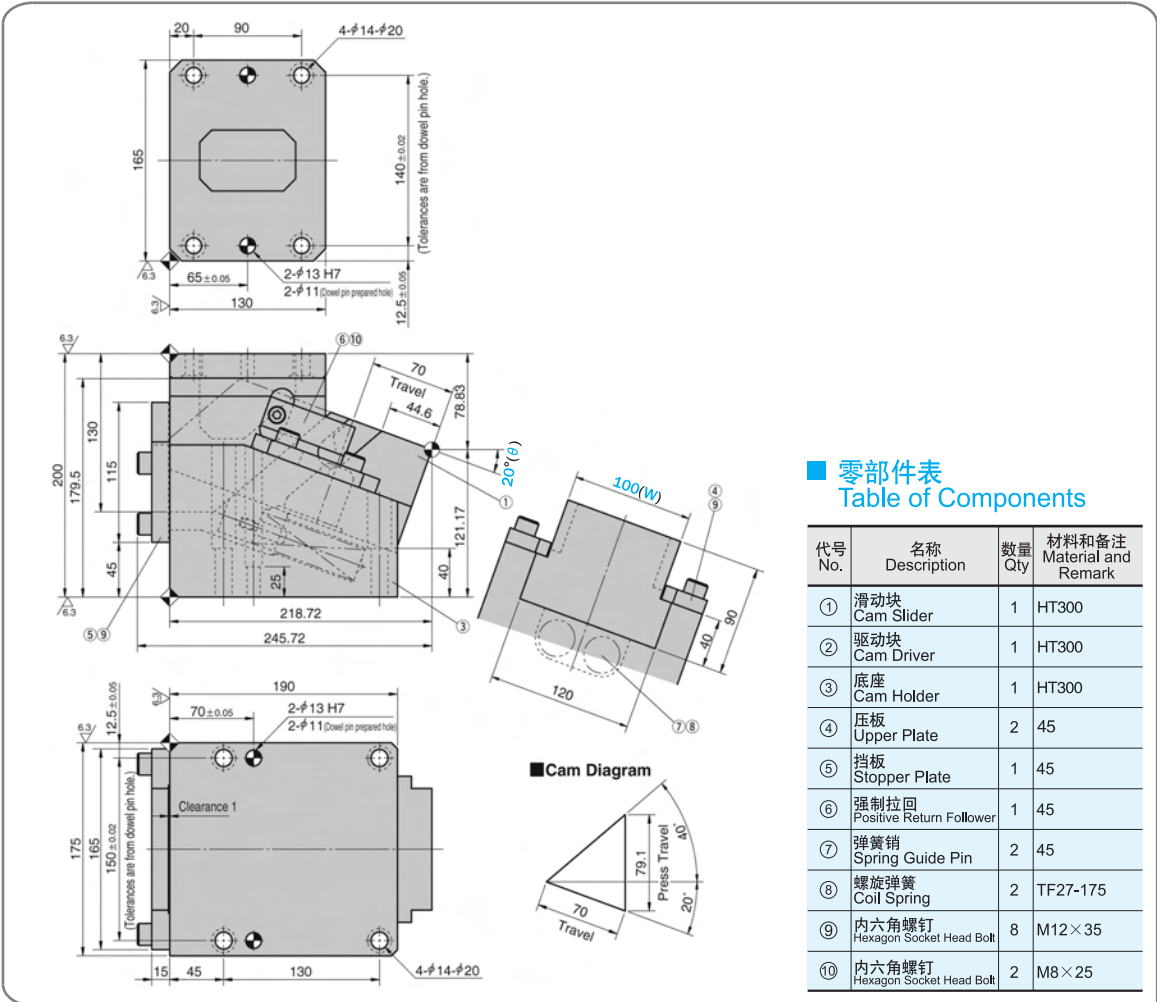
KBD(A)
100

KBDA100-20-70

销孔铰完(Dowel Pin Hole Finished)

KBD100-20-70

销孔预钻孔(Dowel Pin Prepared Hole)



加工力 Working Force kN(tonf)		弹簧力 Spring Force N(kgf)		滑块重量 Slider Weight kg	总重量 Total Weight kg	代号 Catalog No.	(W)	(θ)	行程 Travel S	SANKYO 代号对照 Catalog No.
标准加工力 (100万回) Standard Working Force (one million strokes)	允许加工力 (30万回) Allowable Working Force (300,000 strokes)	初压 Initial Load	终压 Final Load							
39.2 (4.0)	78.4 (8.0)	197.2 (20.0)	1149.2 (116.6)	8.3	34.8	KBDA KBD	100	20	70	SKCA SKC



Order

Catalog No. **(W) - (θ) - S**
KBDA 100 - 20 - 70

KBDA150-00-40

销孔较完(Dowel Pin Hole Finished)

KBD150-00-40

销孔预钻孔(Dowel Pin Prepared Hole)

Technical drawings showing dimensions and callouts for the KBDA150-00-40 and KBD150-00-40 units. Dimensions include 20, 80, 230, 200±0.02, 6.3, 60±0.05, 2-φ16 H7, 2-φ15 (Dowel pin prepared hole), 15±0.05, 120, 190, 170, 140, 23, 40, Travel, 50, 0°(θ), 6.3, 45, 65, 190, 30, 50, 180, 100, 70, 190, 105±0.05, 25±0.05, 2-φ16 H7, 2-φ15 (Dowel pin prepared hole), Clearance 1, 260, 240, 220, 210±0.02, 19, 45, 125, 4-φ18-φ26, 7, 8, 9, 10.

■ **Cam Diagram**

Cam Diagram showing a triangular profile with a 45° angle, 40mm Travel, and 40mm Press Travel.

■ **零部件表**
Table of Components

代号 No.	名称 Description	数量 Qty	材料和备注 Material and Remark
①	滑动块 Cam Slider	1	HT300
②	驱动块 Cam Driver	1	HT300
③	底座 Cam Holder	1	HT300
④	压板 Upper Plate	2	45
⑤	挡板 Stopper Plate	1	45
⑥	强制拉回 Positive Return Follower	1	45
⑦	弹簧销 Spring Guide Pin	2	45
⑧	螺旋弹簧 Coil Spring	2	TF35-100
⑨	内六角螺钉 Hexagon Socket Head Bolt	8	M16×45
⑩	内六角螺钉 Hexagon Socket Head Bolt	2	M8×30

加工力 Working Force kN(tonf)		弹簧力 Spring Force N(kgf)		滑块重量 Slider Weight kg	总重量 Total Weight kg	代号 Catalog No.	(W)	(θ)	行程 Travel S	SANKYO 代号对照 Catalog No.
标准加工力 (100万回) Standard Working Force (one million strokes)	允许加工力 (30万回) Allowable Working Force (300,000 strokes)	初压 Initial Load	终压 Final Load							
58.8 (6.0)	88.2 (9.0)	307.2 (31.4)	1843.2 (188.2)	13.8	53.4	KBDA KBD	150	00	40	SKCA SKC

KBD(A) 150



Order

Catalog No. **KBDA** (W) **150** - (θ) **00** - S **40**

KBDA150-05-45

销孔铰完(Dowel Pin Hole Finished)

KBD150-05-45

销孔预钻孔(Dowel Pin Prepared Hole)

Technical drawings showing dimensions and part callouts for the KBDA150-05-45/KBD150-05-45 assembly. Dimensions include 20, 70, 230, 200±0.02, 55±0.05, 2-φ16 H7, 2-φ15 (Dowel pin prepared hole), 15±0.05, 110, 6.3, 6.3, 23, 45, Travel, 36.1, 61.5, 170.2, 145, 30, 193.01, 229.01, 190, 105±0.05, 25±0.05, 210±0.02, 260, 240, 220, 20, 45, 125, 4-φ18-φ26, 150(W), 180, 40, 100, 5°(θ), 1, 2, 3, 4, 5, 6, 7, 8, 9, 10. A note states: (Tolerances are from dowel pin hole).

■ Cam Diagram

■ 零部件表
Table of Components

代号 No.	名称 Description	数量 Qty	材料和备注 Material and Remark
①	滑动块 Cam Slider	1	HT300
②	驱动块 Cam Driver	1	HT300
③	底座 Cam Holder	1	HT300
④	压板 Upper Plate	2	45
⑤	挡板 Stopper Plate	1	45
⑥	强制拉回 Positive Return Follower	1	45
⑦	弹簧销 Spring Guide Pin	2	45
⑧	螺旋弹簧 Coil Spring	2	TF35-125
⑨	内六角螺钉 Hexagon Socket Head Bolt	8	M16×45
⑩	内六角螺钉 Hexagon Socket Head Bolt	2	M8×30

加工力 Working Force kN(tonf)		弹簧力 Spring Force N(kgf)		滑块重量 Slider Weight kg	总重量 Total Weight kg	代号 Catalog No.	(W)	(θ)	行程 Travel S	SANKYO 代号对照 Catalog No.
标准加工力 (100万回) Standard Working Force (one million strokes)	允许加工力 (30万回) Allowable Working Force (300,000 strokes)	初压 Initial Load	终压 Final Load							
64.7 (6.6)	98.0 (10.0)	428.4 (43.7)	1805.4 (184.1)	14.1	62.0	KBDA KBD	150	05	45	SKCA SKC

KBD(A) 150



Order

Catalog No. **KBDA** (W) **150** - (θ) **05** - S **45**

KBDA150-05-70

销孔铰完(Dowel Pin Hole Finished)

KBD150-05-70

销孔预钻孔(Dowel Pin Prepared Hole)

Technical drawings showing the front and side views of the KBDA150-05-70 and KBD150-05-70 components. The drawings include dimensions such as 20, 90, 230, 200±0.02, 65±0.05, 130, 15±0.05, 2-φ16 H7, 2-φ15 Dowel pin prepared hole, 70, 36.1, 53.68, 166.32, 150(W), 180, 40, 100, 220, 180.6, 125, 170, 40, 217.92, 253.92, 200, 120±0.05, 25±0.05, 260, 240, 220, 210±0.02, 20, 45, 135, 4-φ18-φ26, 6.3, 23, 70, Travel, 5°(θ), 105.7, Press Travel, 55, 70, Travel, 1, 2, 3, 4, 5, 6, 7, 8, 9, 10. A note states: (Tolerances are from dowel pin hole).

■ Cam Diagram

■ 零部件表
Table of Components

代号 No.	名称 Description	数量 Qty	材料和备注 Material and Remark
①	滑动块 Cam Slider	1	HT300
②	驱动块 Cam Driver	1	HT300
③	底座 Cam Holder	1	HT300
④	压板 Upper Plate	2	45
⑤	挡板 Stopper Plate	1	45
⑥	强制拉回 Positive Return Follower	1	45
⑦	弹簧销 Spring Guide Pin	2	45
⑧	螺旋弹簧 Coil Spring	2	TF35-175
⑨	内六角螺钉 Hexagon Socket Head Bolt	8	M16×45
⑩	内六角螺钉 Hexagon Socket Head Bolt	2	M8×30

加工力 Working Force kN(tonf)		弹簧力 Spring Force N(kgf)		滑块重量 Slider Weight kg	总重量 Total Weight kg	代号 Catalog No.	(W)	(θ)	行程 Travel S	SANKYO 代号对照 Catalog No.
标准加工力 (100万回) Standard Working Force (one million strokes)	允许加工力 (30万回) Allowable Working Force (300,000 strokes)	初压 Initial Load	终压 Final Load							
64.7 (6.6)	98.0 (10.0)	308.0 (31.4)	1848.0 (188.2)	14.2	73.0	KBDA KBD	150	05	70	SKCA SKC



Order

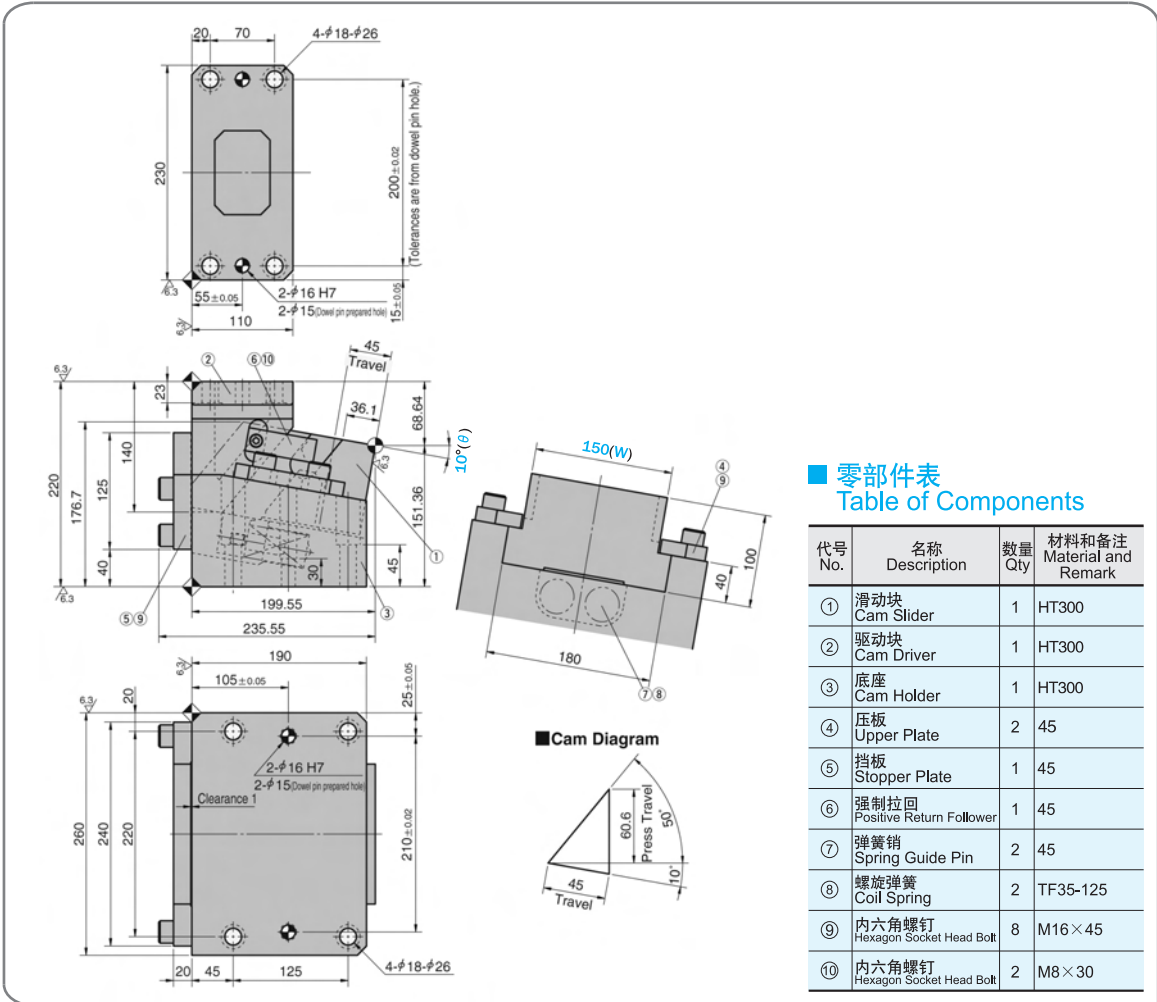
Catalog No. (W) - (θ) - S
KBDA 150 - 05 - 70

KBDA150-10-45

销孔铰完(Dowel Pin Hole Finished)

KBD150-10-45

销孔预钻孔(Dowel Pin Prepared Hole)



加工力 Working Force kN(tonf)		弹簧力 Spring Force N(kgf)		滑块重量 Slider Weight kg	总重量 Total Weight kg	代号 Catalog No.	(W)	(θ)	行程 Travel S	SANKYO 代号对照 Catalog No.
标准加工力 (100万回) Standard Working Force (one million strokes)	允许加工力 (30万回) Allowable Working Force (300,000 strokes)	初压 Initial Load	终压 Final Load							
64.7 (6.6)	98.0 (10.0)	428.4 (43.7)	1805.4 (184.1)	14.1	53.0	KBDA KBD	150	10	45	SKCA SKC

KBD(A) 150



Order

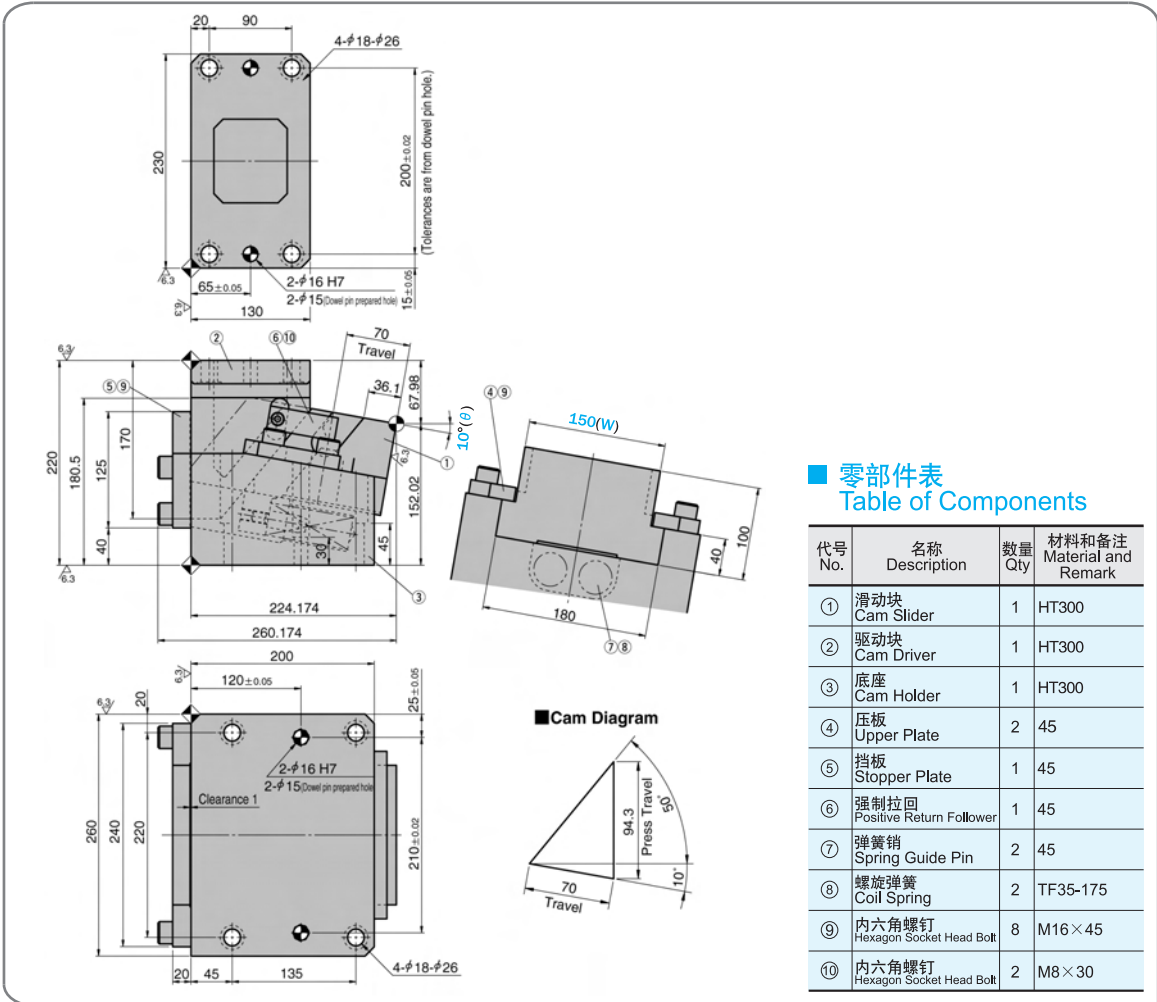
Catalog No. **KBDA** (W) - (θ) - S
150 - 10 - 45

KBDA150-10-70

销孔铰完(Dowel Pin Hole Finished)

KBD150-10-70

销孔预钻孔(Dowel Pin Prepared Hole)



加工力 Working Force kN(tonf)		弹簧力 Spring Force N(kgf)		滑块重量 Slider Weight kg	总重量 Total Weight kg	代号 Catalog No.	(W)	(θ)	行程 Travel S	SANKYO 代号对照 Catalog No.
标准加工力 (100万回) Standard Working Force (one million strokes)	允许加工力 (30万回) Allowable Working Force (300,000 strokes)	初压 Initial Load	终压 Final Load							
64.7 (6.6)	98.0 (10.0)	308.0 (31.4)	1848.0 (188.2)	14.2	57.6	KBDA KBD	150	10	70	SKCA SKC



Order

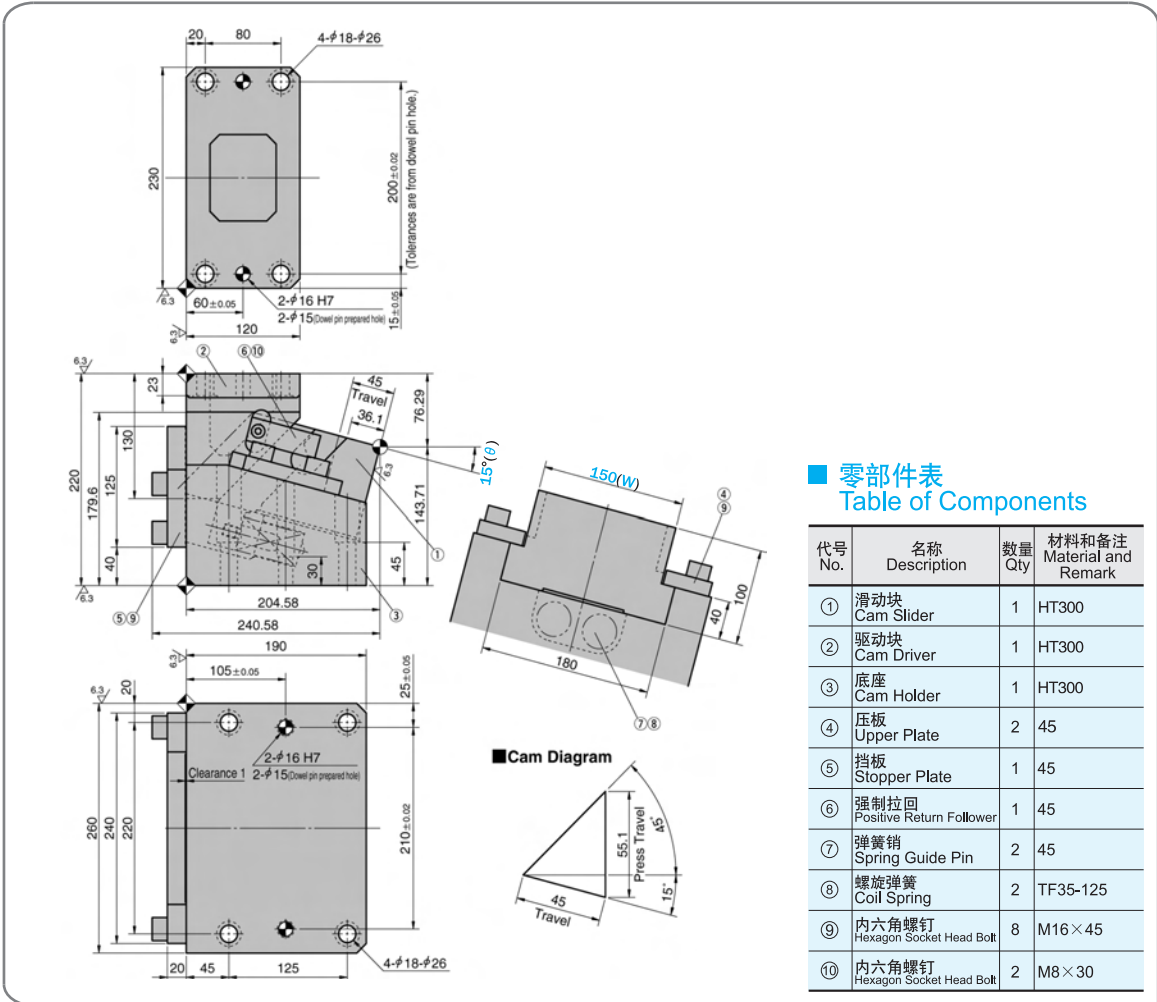
Catalog No. **(W) - (θ) - S**
KBDA 150 - 10 - 70

KBDA150-15-45

销孔铰完(Dowel Pin Hole Finished)

KBD 150-15-45

销孔预钻孔(Dowel Pin Prepared Hole)



加工力 Working Force kN(tonf)		弹簧力 Spring Force N(kgf)		滑块重量 Slider Weight kg	总重量 Total Weight kg	代号 Catalog No.	(W)	(θ)	行程 Travel S	SANKYO 代号对照 Catalog No.
标准加工力 (100万回) Standard Working Force (one million strokes)	允许加工力 (30万回) Allowable Working Force (300,000 strokes)	初压 Initial Load	终压 Final Load							
64.7 (6.6)	98.0 (10.0)	428.4 (43.7)	1805.4 (184.1)	14.1	65.0	KBDA KBD	150	15	45	SKCA SKC

KBD(A) 150



Order

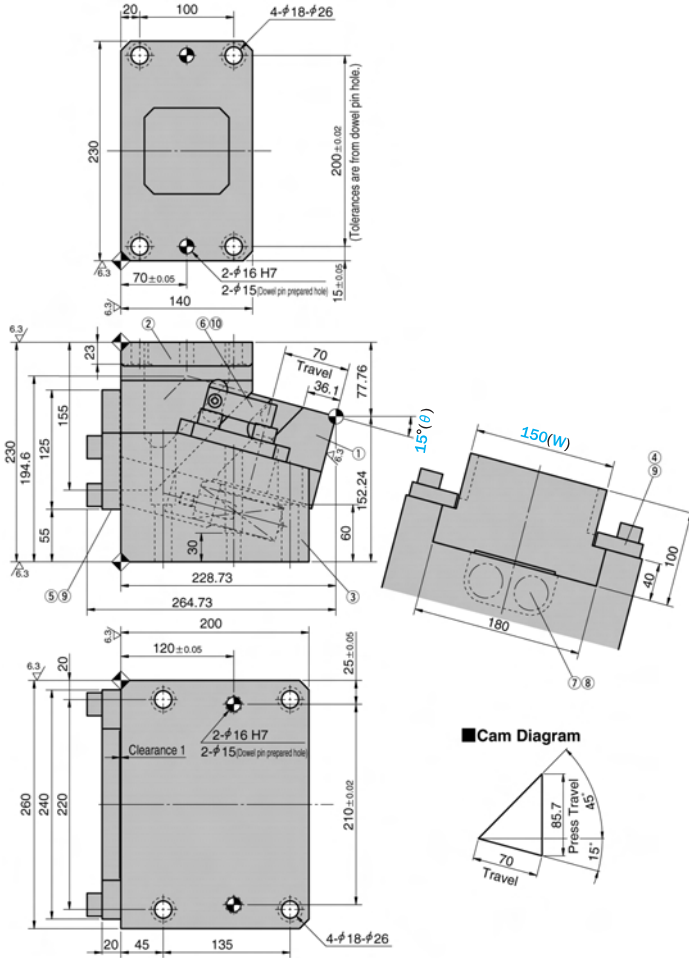
Catalog No. (W) - (θ) - S
KBDA 150 - 15 - 45

KBDA150-15-70

销孔铰完(Dowel Pin Hole Finished)

KBD150-15-70

销孔预钻孔(Dowel Pin Prepared Hole)



■ 零部件表
Table of Components

代号 No.	名称 Description	数量 Qty	材料和备注 Material and Remark
①	滑动块 Cam Slider	1	HT300
②	驱动块 Cam Driver	1	HT300
③	底座 Cam Holder	1	HT300
④	压板 Upper Plate	2	45
⑤	挡板 Stopper Plate	1	45
⑥	强制拉回 Positive Return Follower	1	45
⑦	弹簧销 Spring Guide Pin	2	45
⑧	螺旋弹簧 Coil Spring	2	TF35-175
⑨	内六角螺钉 Hexagon Socket Head Bolt	8	M16×45
⑩	内六角螺钉 Hexagon Socket Head Bolt	2	M8×30

加工力 Working Force kN(tonf)		弹簧力 Spring Force N(kgf)		滑块重量 Slider Weight kg	总重量 Total Weight kg	代号 Catalog No.	(W)	(θ)	行程 Travel S	SANKYO 代号对照 Catalog No.
标准加工力 (100万回) Standard Working Force (one million strokes)	允许加工力 (30万回) Allowable Working Force (300,000 strokes)	初压 Initial Load	终压 Final Load							
64.7 (6.6)	98.0 (10.0)	308.0 (31.4)	1848.0 (188.2)	14.2	77.0	KBDA KBD	150	15	70	SKCA SKC



Order

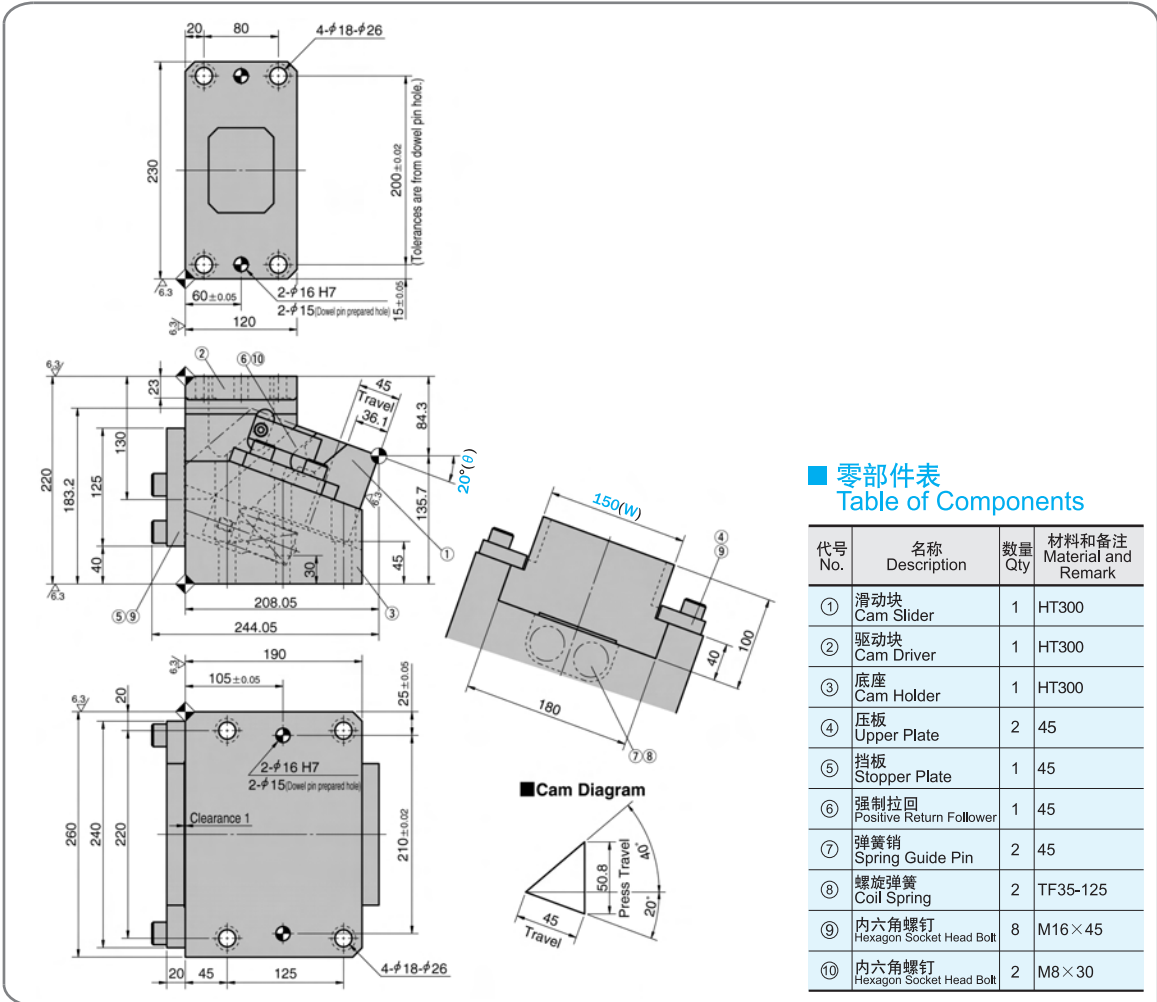
Catalog No. (W) - (θ) - S
KBDA 150 - 15 - 70

KBDA150-20-45

销孔铰完(Dowel Pin Hole Finished)

KBD150-20-45

销孔预钻孔(Dowel Pin Prepared Hole)



加工力 Working Force kN(tonf)		弹簧力 Spring Force N(kgf)		滑块重量 Slider Weight kg	总重量 Total Weight kg	代号 Catalog No.	(W)	(θ)	行程 Travel S	SANKYO 代号对照 Catalog No.
标准加工力 (100万回) Standard Working Force (one million strokes)	允许加工力 (30万回) Allowable Working Force (300,000 strokes)	初压 Initial Load	终压 Final Load							
64.7 (6.6)	98.0 (10.0)	428.4 (43.7)	1805.4 (184.1)	14.1	53.7	KBDA KBD	150	20	45	SKCA SKC

KBD(A)
150



Order

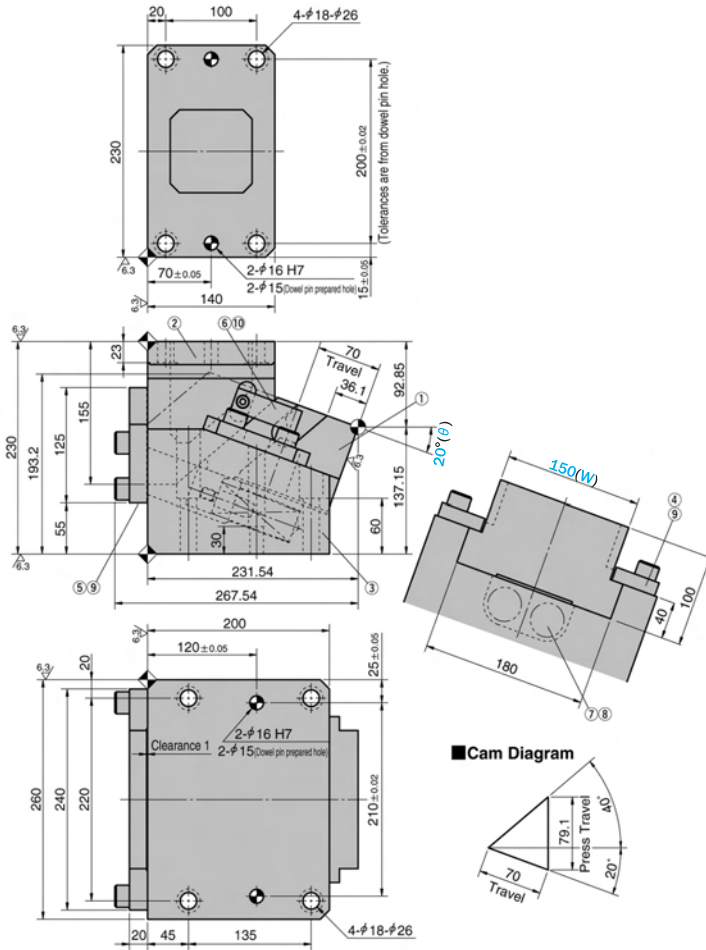
Catalog No. (W) - (θ) - S
KBDA 150 - 20 - 45

KBDA150-20-70

销孔铰完(Dowel Pin Hole Finished)

KBD150-20-70

销孔预钻孔(Dowel Pin Prepared Hole)



零部件表
Table of Components

代号 No.	名称 Description	数量 Qty	材料和备注 Material and Remark
①	滑动块 Cam Slider	1	HT300
②	驱动块 Cam Driver	1	HT300
③	底座 Cam Holder	1	HT300
④	压板 Upper Plate	2	45
⑤	挡板 Stopper Plate	1	45
⑥	强制拉回 Positive Return Follower	1	45
⑦	弹簧销 Spring Guide Pin	2	45
⑧	螺旋弹簧 Coil Spring	2	TF35-175
⑨	内六角螺钉 Hexagon Socket Head Bolt	8	M16×45
⑩	内六角螺钉 Hexagon Socket Head Bolt	2	M8×30

加工力 Working Force kN(tonf)		弹簧力 Spring Force N(kgf)		滑块重量 Slider Weight kg	总重量 Total Weight kg	代号 Catalog No.	(W)	(θ)	行程 Travel S	SANKYO 代号对照 Catalog No.
标准加工力 (100万回) Standard Working Force (one million strokes)	允许加工力 (30万回) Allowable Working Force (300,000 strokes)	初压 Initial Load	终压 Final Load							
64.7 (6.6)	98.0 (10.0)	308.0 (31.4)	1848.0 (188.2)	14.2	60.0	KBDA KBD	150	20	70	SKCA SKC



Order

Catalog No. (W) - (θ) - S
KBDA 150 - 20 - 70

KBDA200-00-40

销孔铰完(Dowel Pin Hole Finished)

KBD200-00-40

销孔预钻孔(Dowel Pin Prepared Hole)

Cam Diagram

**零部件表
Table of Components**

代号 No.	名称 Description	数量 Qty	材料和备注 Material and Remark
①	滑动块 Cam Slider	1	HT300
②	驱动块 Cam Driver	1	HT300
③	底座 Cam Holder	1	HT300
④	压板 Upper Plate	2	45
⑤	挡板 Stopper Plate	1	45
⑥	强制拉回 Positive Return Follower	2	45
⑦	弹簧销 Spring Guide Pin	3	45
⑧	螺旋弹簧 Coil Spring	3	TF35-100
⑨	内六角螺钉 Hexagon Socket Head Bolt	10	M16×45
⑩	内六角螺钉 Hexagon Socket Head Bolt	4	M8×30

加工力 Working Force kN(tonf)		弹簧力 Spring Force N(kgf)		滑块重量 Slider Weight kg	总重量 Total Weight kg	代号 Catalog No.	(W)	(θ)	行程 Travel S	SANKYO 代号对照 Catalog No.
标准加工力 (100万回) Standard Working Force (one million strokes)	允许加工力 (30万回) Allowable Working Force (300,000 strokes)	初压 Initial Load	终压 Final Load							
78.4 (8.0)	117.6 (12.0)	460.8 (47.0)	2764.8 (282.2)	21.3	73.9	KBDA KBD	200	00	40	SKCA SKC



Order

Catalog No. **KBDA** (W) - (θ) - S
200 - 00 - 40

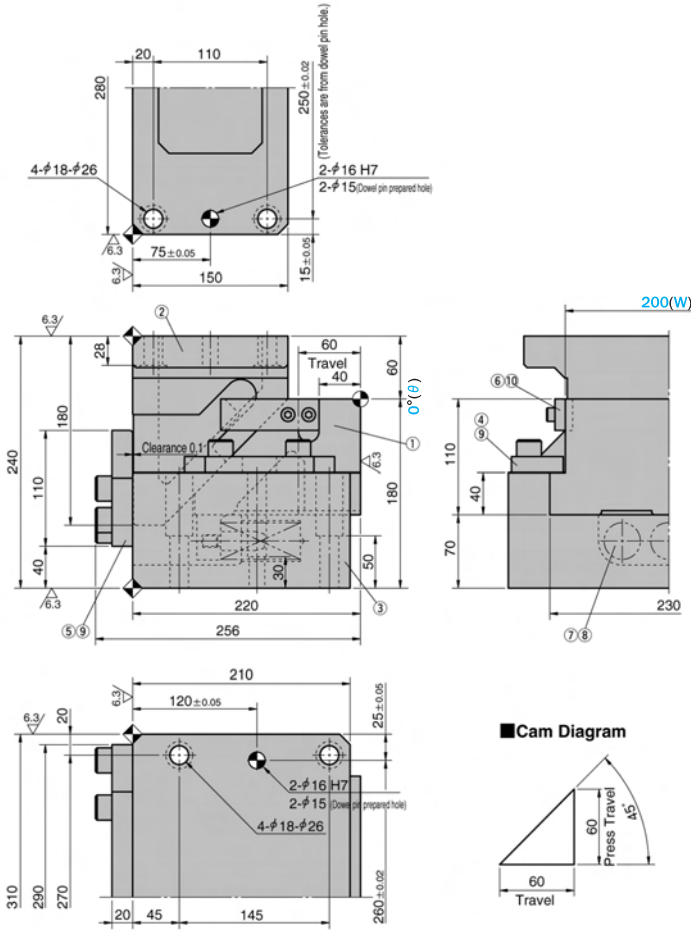
KBD(A)
200

KBDA200-00-60

销孔铰完(Dowel Pin Hole Finished)

KBD200-00-60

销孔预钻孔(Dowel Pin Prepared Hole)



■ 零部件表
Table of Components

代号 No.	名称 Description	数量 Qty	材料和备注 Material and Remark
①	滑动块 Cam Slider	1	HT300
②	驱动块 Cam Driver	1	HT300
③	底座 Cam Holder	1	HT300
④	压板 Upper Plate	2	45
⑤	挡板 Stopper Plate	1	45
⑥	强制拉回 Positive Return Follower	2	45
⑦	弹簧销 Spring Guide Pin	3	45
⑧	螺旋弹簧 Coil Spring	3	TF35-150
⑨	内六角螺钉 Hexagon Socket Head Bolt	10	M16×45
⑩	内六角螺钉 Hexagon Socket Head Bolt	4	M8×30

加工力 Working Force kN(tonf)		弹簧力 Spring Force N(kgf)		滑块重量 Slider Weight kg	总重量 Total Weight kg	代号 Catalog No.	(W)	(θ)	行程 Travel S	SANKYO 代号对照 Catalog No.
标准加工力 (100万回) Standard Working Force (one million strokes)	允许加工力 (30万回) Allowable Working Force (300,000 strokes)	初压 Initial Load	终压 Final Load							
78.4 (8.0)	117.6 (12.0)	495.3 (50.7)	2781.3 (284.7)	21.5	77.6	KBDA KBD	200	00	60	SKCA SKC



Order

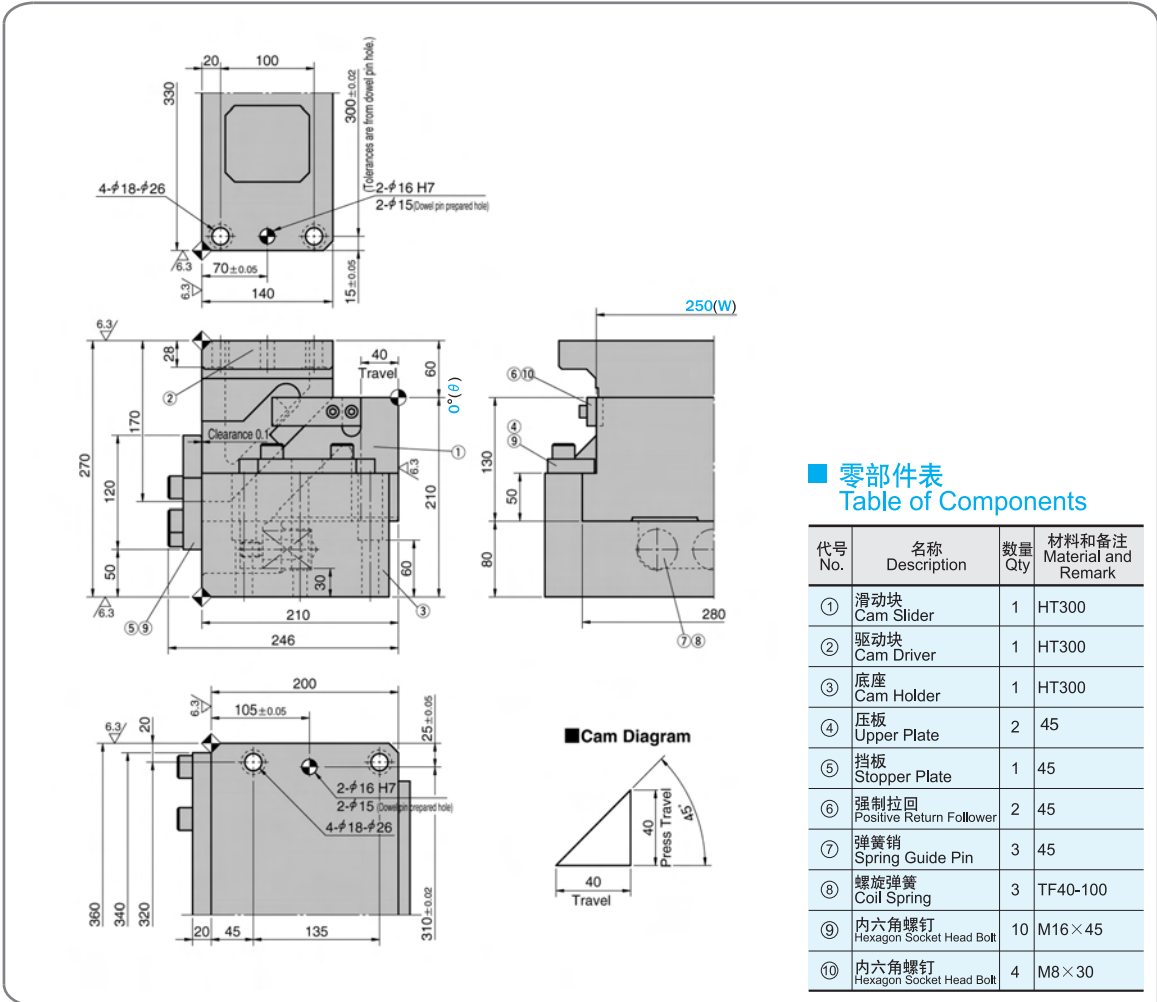
Catalog No. **KBDA** (W) **200** - (θ) **00** - S **60**

KBDA250-00-40

销孔铰完(Dowel Pin Hole Finished)

KBD250-00-40

销孔预钻孔(Dowel Pin Prepared Hole)



■ 零部件表
Table of Components

代号 No.	名称 Description	数量 Qty	材料和备注 Material and Remark
①	滑动块 Cam Slider	1	HT300
②	驱动块 Cam Driver	1	HT300
③	底座 Cam Holder	1	HT300
④	压板 Upper Plate	2	45
⑤	挡板 Stopper Plate	1	45
⑥	强制拉回 Positive Return Follower	2	45
⑦	弹簧销 Spring Guide Pin	3	45
⑧	螺旋弹簧 Coil Spring	3	TF40-100
⑨	内六角螺钉 Hexagon Socket Head Bolt	10	M16×45
⑩	内六角螺钉 Hexagon Socket Head Bolt	4	M8×30

加工力 Working Force kN(tonf)		弹簧力 Spring Force N(kgf)		滑块重量 Slider Weight kg	总重量 Total Weight kg	代号 Catalog No.	(W)	(θ)	行程 Travel S	SANKYO 代号对照 Catalog No.
标准加工力 (100万回) Standard Working Force (one million strokes)	允许加工力 (30万回) Allowable Working Force (300,000 strokes)	初压 Initial Load	终压 Final Load							
98.0 (10.0)	147.0 (15.0)	602.4 (61.4)	3614.4 (368.6)	32.2	102.6	KBDA KBD	250	00	40	SKCA SKC

KBD(A) 250



Order

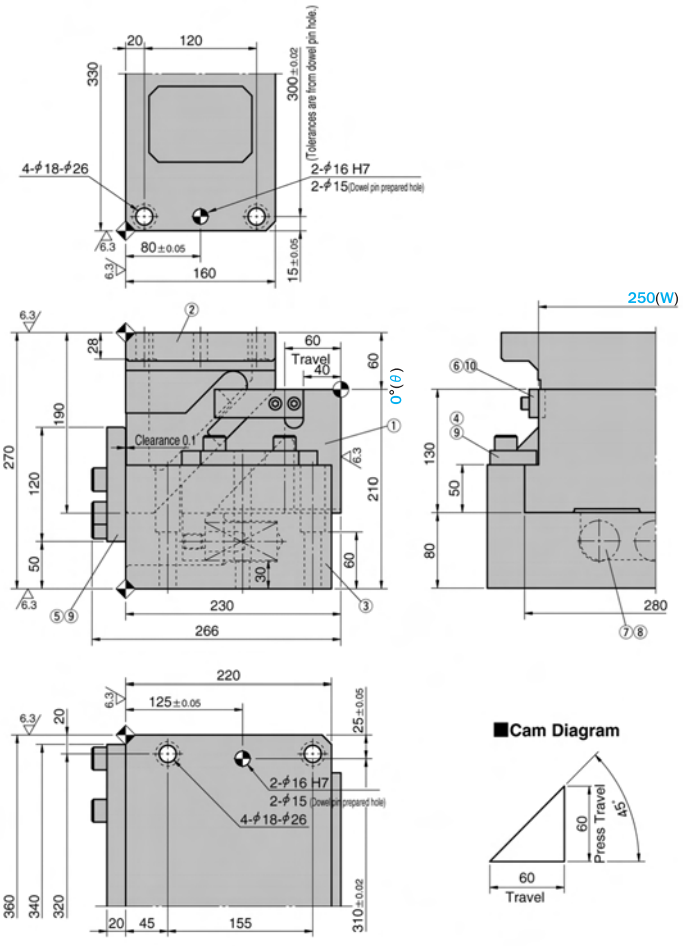
Catalog No. **KBDA** (W) **250** - (θ) **00** - S **40**

KBDA250-00-60

销孔铰完(Dowel Pin Hole Finished)

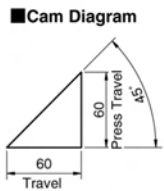
KBD250-00-60

销孔预钻孔(Dowel Pin Prepared Hole)



■ 零部件表
Table of Components

代号 No.	名称 Description	数量 Qty	材料和备注 Material and Remark
①	滑动块 Cam Slider	1	HT300
②	驱动块 Cam Driver	1	HT300
③	底座 Cam Holder	1	HT300
④	压板 Upper Plate	2	45
⑤	挡板 Stopper Plate	1	45
⑥	强制拉回 Positive Return Follower	2	45
⑦	弹簧销 Spring Guide Pin	3	45
⑧	螺旋弹簧 Coil Spring	3	TF40-150
⑨	内六角螺钉 Hexagon Socket Head Bolt	10	M16×45
⑩	内六角螺钉 Hexagon Socket Head Bolt	4	M8×30



加工力 Working Force kN(tonf)		弹簧力 Spring Force N(kgf)		滑块重量 Slider Weight kg	总重量 Total Weight kg	代号 Catalog No.	(W)	(θ)	行程 Travel S	SANKYO 代号对照 Catalog No.
标准加工力 (100万回) Standard Working Force (one million strokes)	允许加工力 (30万回) Allowable Working Force (300,000 strokes)	初压 Initial Load	终压 Final Load							
98.0 (10.0)	147.0 (15.0)	651.3 (66.3)	3657.3 (372.3)	32.5	109.0	KBDA KBD	250	00	60	SKCA SKC

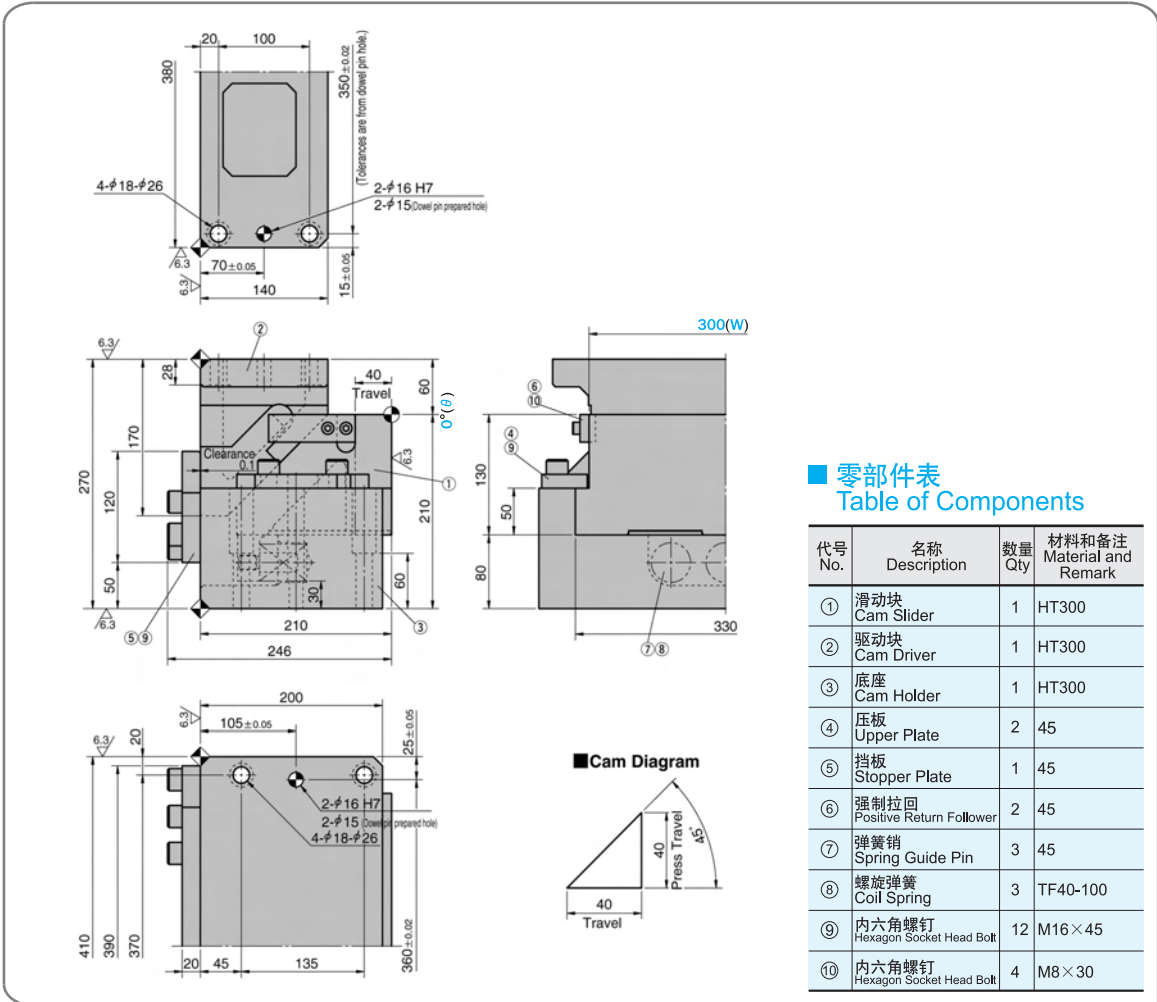
Order Catalog No. (W) - (θ) - S
KBDA 250 - 00 - 60

KBDA300-00-40

销孔铰完(Dowel Pin Hole Finished)

KBD300-00-40

销孔预钻孔(Dowel Pin Prepared Hole)



■ 零部件表
Table of Components

代号 No.	名称 Description	数量 Qty	材料和备注 Material and Remark
①	滑动块 Cam Slider	1	HT300
②	驱动块 Cam Driver	1	HT300
③	底座 Cam Holder	1	HT300
④	压板 Upper Plate	2	45
⑤	挡板 Stopper Plate	1	45
⑥	强制拉回 Positive Return Follower	2	45
⑦	弹簧销 Spring Guide Pin	3	45
⑧	螺旋弹簧 Coil Spring	3	TF40-100
⑨	内六角螺钉 Hexagon Socket Head Bolt	12	M16×45
⑩	内六角螺钉 Hexagon Socket Head Bolt	4	M8×30

加工力 Working Force kN(tonf)		弹簧力 Spring Force N(kgf)		滑块重量 Slider Weight kg	总重量 Total Weight kg	代号 Catalog No.	(W)	(θ)	行程 Travel S	SANKYO 代号对照 Catalog No.
标准加工力 (100万回) Standard Working Force (one million strokes)	允许加工力 (30万回) Allowable Working Force (300,000 strokes)	初压 Initial Load	终压 Final Load							
117.6 (12.0)	176.4 (18.0)	602.4 (61.4)	3614.4 (368.6)	37.8	116.2	KBDA KBD	300	00	40	SKCA SKC

KBD(A)
300



Order

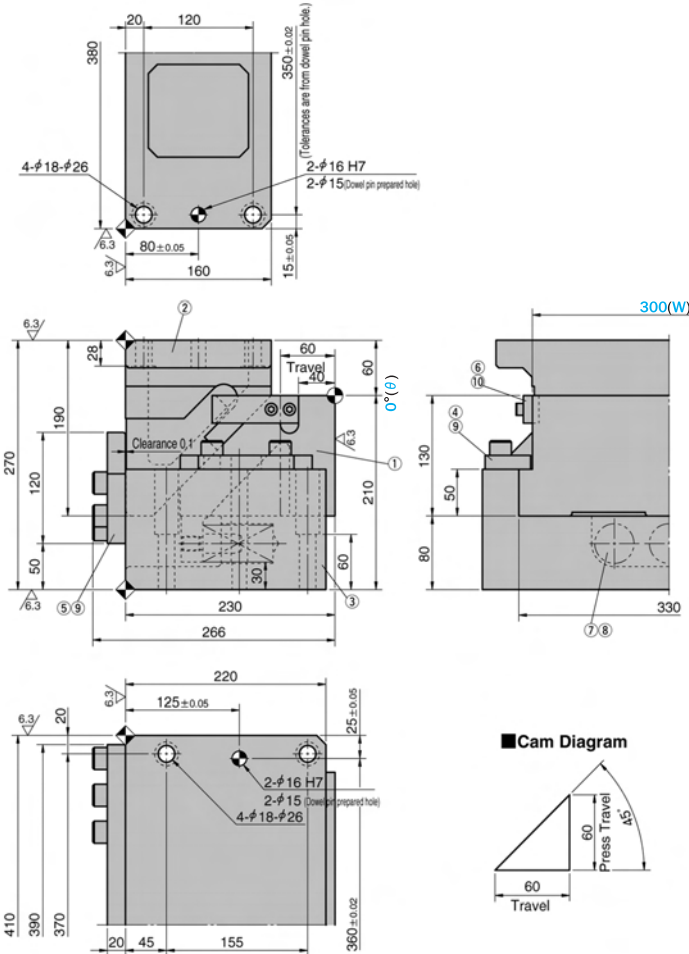
Catalog No. **KBDA** (W) **300** - (θ) **00** - S **40**

KBDA300-00-60

销孔铰完(Dowel Pin Hole Finished)

KBD300-00-60

销孔预钻孔(Dowel Pin Prepared Hole)



■ 零部件表
Table of Components

代号 No.	名称 Description	数量 Qty	材料和备注 Material and Remark
①	滑动块 Cam Slider	1	HT300
②	驱动块 Cam Driver	1	HT300
③	底座 Cam Holder	1	HT300
④	压板 Upper Plate	2	45
⑤	挡板 Stopper Plate	1	45
⑥	强制拉回 Positive Return Follower	2	45
⑦	弹簧销 Spring Guide Pin	3	45
⑧	螺旋弹簧 Coil Spring	3	TF40-150
⑨	内六角螺钉 Hexagon Socket Head Bolt	12	M16×45
⑩	内六角螺钉 Hexagon Socket Head Bolt	4	M8×30

加工力 Working Force kN(tonf)		弹簧力 Spring Force N(kgf)		滑块重量 Slider Weight kg	总重量 Total Weight kg	代号 Catalog No.	(W)	(θ)	行程 Travel S	SANKYO 代号对照 Catalog No.
标准加工力 (100万回) Standard Working Force (one million strokes)	允许加工力 (30万回) Allowable Working Force (300,000 strokes)	初压 Initial Load	终压 Final Load							
117.6 (12.0)	176.4 (18.0)	651.3 (66.3)	3657.3 (372.3)	38.0	125.7	KBDA KBD	300	00	60	SKCA SKC



Order

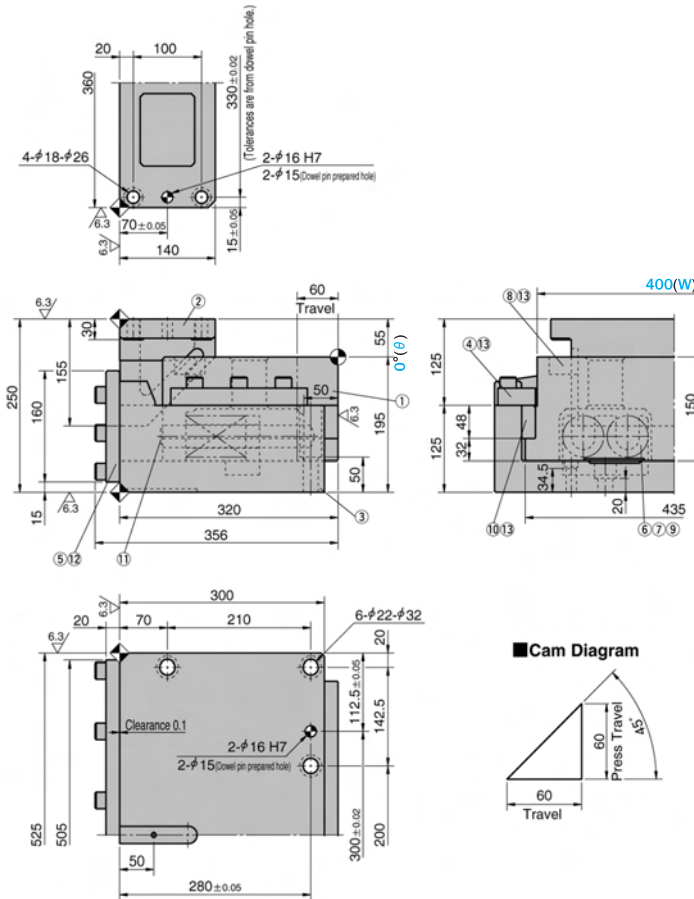
Catalog No. (W) - (θ) - S
KBDA 300 - 00 - 60

KBDA400-00-60

销孔铰完(Dowel Pin Hole Finished)

KBD400-00-60

销孔预钻孔(Dowel Pin Prepared Hole)



零部件表 Table of Components

代号 No.	名称 Description	数量 Qty	材料和备注 Material and Remark
①	滑动块 Cam Slider	1	HT300
②	驱动块 Cam Driver	1	HT300
③	底座 Cam Holder	1	HT300
④	压板 Upper Plate	2	45
⑤	挡板 Stopper Plate	1	45
⑥	弹簧挡板 Spring Guide Plate	3	45
⑦	弹簧销 Spring Guide Pin	3	45
⑧	强制拉回 Positive Return Follower	2	45
⑨	螺旋弹簧 Coil Spring	4	TF60-150
⑩	耐磨板 Wear Plate	4	铜合金 Bronze
⑪	缓冲块 Coil Spring	3	φ22 × 15
⑫	内六角螺钉 Hexagon Socket Head Bolt	16	M16×55
⑬	内六角螺钉 Hexagon Socket Head Bolt	18	M10×30
⑭	内螺纹圆柱销 Dowel Pin with Female Thread	4	MSTM10-60

加工力 Working Force kN(tonf)		弹簧力 Spring Force N(kgf)		滑块重量 Slider Weight kg	总重量 Total Weight kg	代号 Catalog No.	(W)	(θ)	行程 Travel S	SANKYO 代号对照 Catalog No.
标准加工力 (100万回) Standard Working Force (one million strokes)	允许加工力 (30万回) Allowable Working Force (300,000 strokes)	初压 Initial Load	终压 Final Load							
137.2 (14.0)	205.8 (21.0)	301.6 (30.7)	9349.6 (952.3)	90.3	197.9	KBDA KBD	400	00	60	SKCA SKC

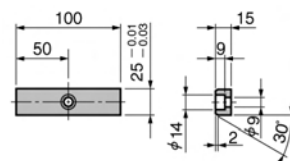
KBD(A)
400



Order

Catalog No. **KBDA** (W) **400** - (θ) **00** - S **60**

键详图 Key Specification



KBDA500-00-60

销孔铰完(Dowel Pin Hole Finished)

KBD500-00-60

销孔预钻孔(Dowel Pin Prepared Hole)

■ 零部件表 Table of Components

代号 No.	名称 Description	数量 Qty	材料和备注 Material and Remark
①	滑动块 Cam Slider	1	HT300
②	驱动块 Cam Driver	1	HT300
③	底座 Cam Holder	1	HT300
④	压板 Upper Plate	2	45
⑤	挡板 Stopper Plate	1	45
⑥	弹簧挡板 Spring Guide Plate	3	45
⑦	弹簧销 Spring Guide Pin	3	45
⑧	强制拉回 Positive Return Follower	2	45
⑨	螺旋弹簧 Coil Spring	4	TF60-150
⑩	耐磨板 Wear Plate	4	铜合金 Bronze
⑪	缓冲块 Coil Spring	3	φ22 × 15
⑫	内六角螺钉 Hexagon Socket Head Bolt	16	M16 × 55
⑬	内六角螺钉 Hexagon Socket Head Bolt	18	M10 × 30
⑭	内螺纹圆柱销 Dowel Pin with Female Thread	4	MSTM10-60

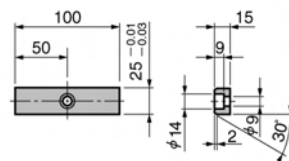
加工力 Working Force kN(tonf)		弹簧力 Spring Force N(kgf)		滑块重量 Slider Weight kg	总重量 Total Weight kg	代号 Catalog No.	(W)	(θ)	行程 Travel S	SANKYO 代号对照 Catalog No.
标准加工力 (100万回) Standard Working Force (one million strokes)	允许加工力 (30万回) Allowable Working Force (300,000 strokes)	初压 Initial Load	终压 Final Load							
137.2 (14.0)	205.8 (21.0)	301.6 (30.7)	9349.6 (952.3)	118.0	240.6	KBDA KBD	500	00	60	SKCA SKC



Order

Catalog No. **KBDA** (W) **500** - (θ) **00** - S **60**

■ 键详图 Key Specification

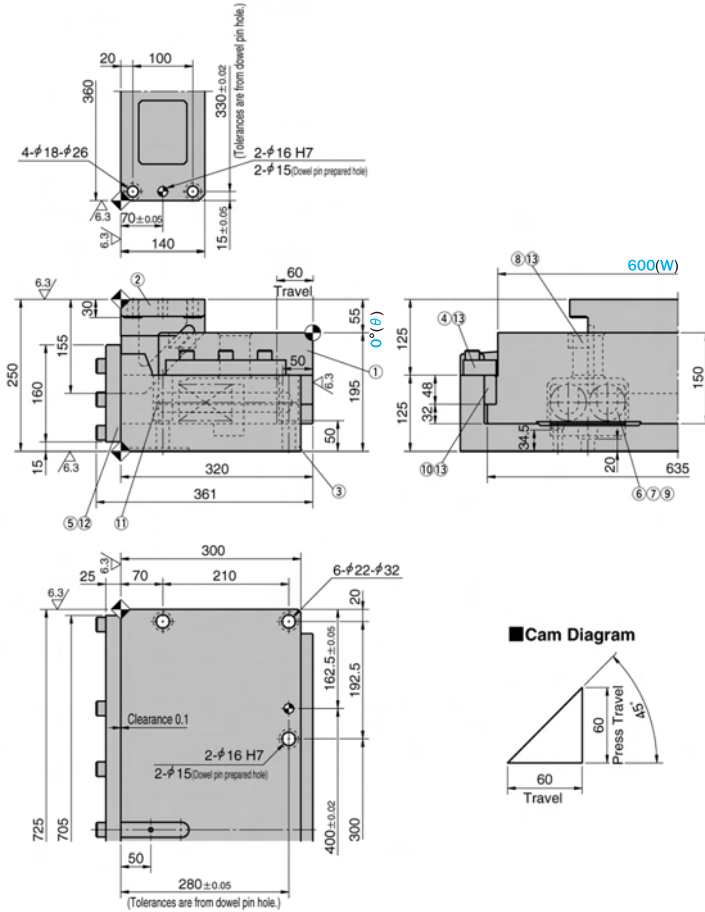


KBDA600-00-60

销孔铰完(Dowel Pin Hole Finished)

KBD600-00-60

销孔预钻孔(Dowel Pin Prepared Hole)



■ 零部件表
Table of Components

代号 No.	名称 Description	数量 Qty	材料和备注 Material and Remark
①	滑动块 Cam Slider	1	HT300
②	驱动块 Cam Driver	1	HT300
③	底座 Cam Holder	1	HT300
④	压板 Upper Plate	2	45
⑤	挡板 Stopper Plate	1	45
⑥	弹簧挡板 Spring Guide Plate	3	45
⑦	弹簧销 Spring Guide Pin	3	45
⑧	强制拉回 Positive Return Follower	2	45
⑨	螺旋弹簧 Coil Spring	4	TF60-150
⑩	耐磨板 Wear Plate	4	铜合金 Bronze
⑪	缓冲块 Coil Spring	3	φ22 × 15
⑫	内六角螺钉 Hexagon Socket Head Bolt	16	M16 × 55
⑬	内六角螺钉 Hexagon Socket Head Bolt	18	M10 × 30
⑭	内螺纹圆柱销 Dowel Pin with Female Thread	4	MSTM10-60

加工力 Working Force kN(tonf)		弹簧力 Spring Force N(kgf)		滑块重量 Slider Weight kg	总重量 Total Weight kg	代号 Catalog No.	(W)	(θ)	行程 Travel S	SANKYO 代号对照 Catalog No.
标准加工力 (100万回) Standard Working Force (one million strokes)	允许加工力 (30万回) Allowable Working Force (300,000 strokes)	初压 Initial Load	终压 Final Load							
137.2 (14.0)	205.8 (21.0)	301.6 (30.7)	9349.6 (952.3)	145.9	280.9	KBDA KBD	600	00	60	SKCA SKC

KBD(A)
600



Order

Catalog No. **(W) - (θ) - S**
KBDA 600 - 00 - 60

■ 键详图 Key Specification

