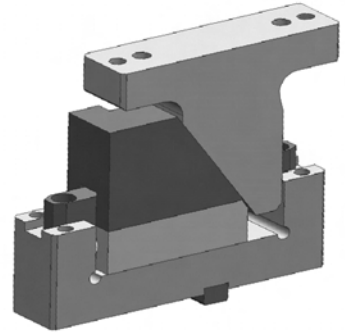
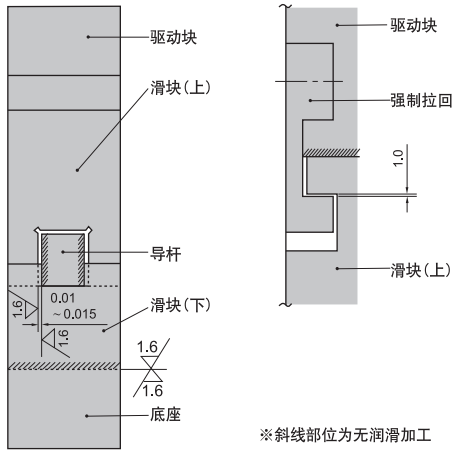


KDMA概要

- 斜楔安装面宽度50。
- 斜楔工作角度有0°、5°、15° 三档。



■ 滑块结构及强制拉回结构



- 标准加工力(100万次)19.2KN。
- 容许加工力(30万次)39.2KN。
- 滑块和导杆单侧间隙为0.01~0.015mm
- 斜楔滑块和斜楔驱动块(强制拉回块)的间隙为1.0mm

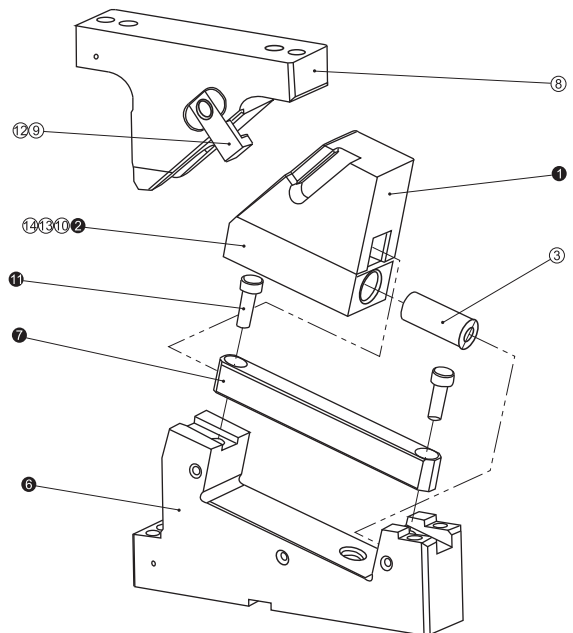
■ KDMA的结构和拆解、装配

● KDMA的拆解方法

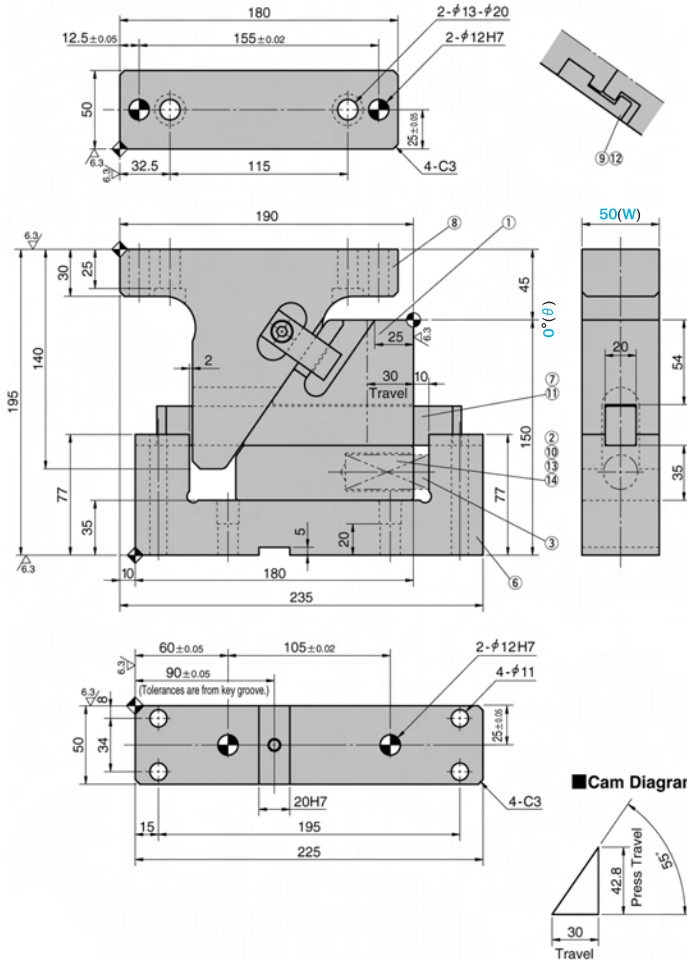
- 1、取下①，从⑥上卸下①②和⑦。
- 2、从滑块上抽出导板。

● KDMA的装配方法

- 1)按与拆解相反的顺序装配。
 - ◆ 充分确认滑动部位是否无异物后涂上润滑脂并进行装配。
 - ◆ 由于对滑块和上底座的间隙进行管理因此要确认刻印的序号后进行装配。
 - ◆ 拆解、装配后，要充分注意不要忘记紧固螺栓。



KDMA50-00-30



零部件表 Table of Components

代号 No.	名称 Description	数量 Qty	材料和备注 Material and Remark
①	滑动块 Cam Slider	1	HT300
②	下滑块 Cam Slider(Lower)	1	45
③	螺旋弹簧 Coil Spring	2	TL22-90
⑥	底座 Cam Holder	1	45
⑦	导轨 Guide Bar	1	铜合金 Bronze
⑧	驱动块 Cam Driver	1	HT300
⑨	强制拉回 Positive Return Follower	1	45
⑩	内六角螺钉 Hexagon Socket Head Bolt	6	M8×40
⑪	内六角螺钉 Hexagon Socket Head Bolt	2	M10×30
⑫	内六角螺钉 Hexagon Socket Head Bolt	1	M8×18
⑬	弹簧销 Spring Guide Pin	2	45

加工力 Working Force kN(tonf)		弹簧力 Spring Force N(kgf)		总重量 Total Weight kg	代号 Catalog No.	(W)	(θ)	行程 Travel S	SANKYO 代号对照 Catalog No.
标准加工力 (100万回) Standard Working Force (one million strokes)	允许加工力 (30万回) Allowable Working Force (300,000 strokes)	初压 Initial Load	终压 Final Load						
19.6 (2.0)	39.2 (4.0)	108.6 (11.1)	651.6 (66.6)	15.0	KDMA	50	00	30	CMSA



Order

Catalog No. (W) - (θ) - S
KDMA 50 - 00 - 30



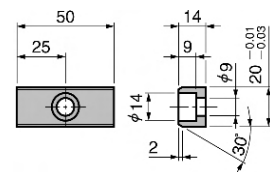
Option

追加编号 Option Code	明细 Specification
N13	驱动块底座销孔改为φ13 Dowel pin holes of cam driver and cam driver are changed to φ13.

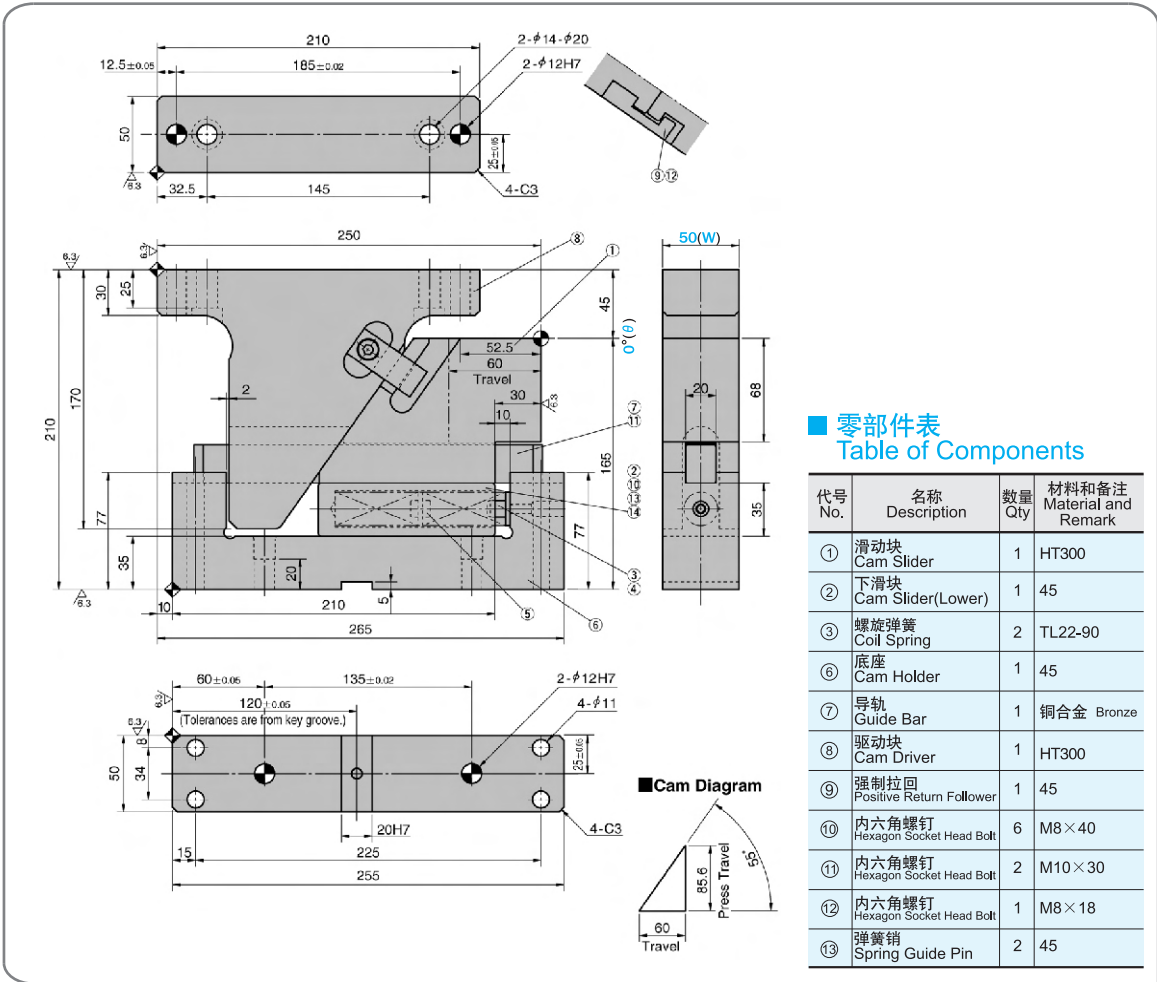


Order **KDMA50-00-30-N13**

键详图 Key Specification



KDMA50-00-60



■ 零部件表 Table of Components

代号 No.	名称 Description	数量 Qty	材料和备注 Material and Remark
①	滑动块 Cam Slider	1	HT300
②	下滑块 Cam Slider(Lower)	1	45
③	螺旋弹簧 Coil Spring	2	TL22-90
⑥	底座 Cam Holder	1	45
⑦	导轨 Guide Bar	1	铜合金 Bronze
⑧	驱动块 Cam Driver	1	HT300
⑨	强制拉回 Positive Return Follower	1	45
⑩	内六角螺钉 Hexagon Socket Head Bolt	6	M8×40
⑪	内六角螺钉 Hexagon Socket Head Bolt	2	M10×30
⑫	内六角螺钉 Hexagon Socket Head Bolt	1	M8×18
⑬	弹簧销 Spring Guide Pin	2	45

加工力 Working Force kN(tonf)		弹簧力 Spring Force N(kgf)		总重量 Total Weight kg	代号 Catalog No.	(W)	(θ)	行程 Travel S	SANKYO 代号对照 Catalog No.
标准加工力 (100万回) Standard Working Force (one million strokes)	允许加工力 (30万回) Allowable Working Force (300,000 strokes)	初压 Initial Load	终压 Final Load						
19.6 (2.0)	39.2 (4.0)	108.6 (11.1)	651.6 (66.6)	18.0	KDMA	50	00	60	CMSA



Order

Catalog No. (W) - (θ) - S
KDMA 50 - 00 - 60



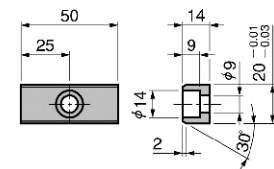
Option

追加编号 Option Code	明细 Specification
N13	驱动块底座销孔改为φ13 Dowel pin holes of cam holder and cam driver are changed to φ13.



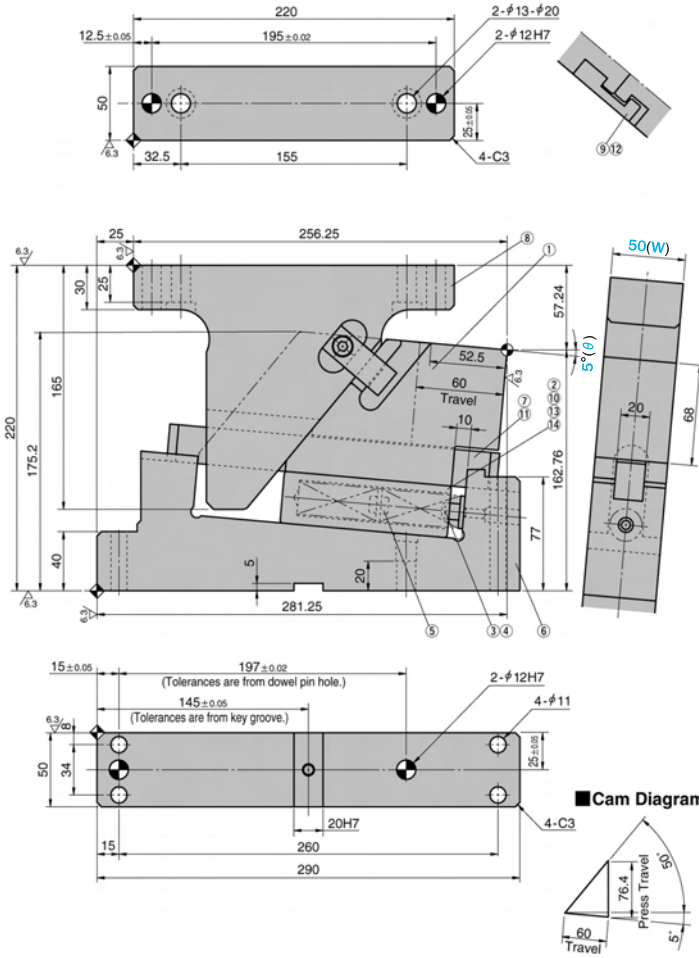
Order **KDMA50-00-60-N13**

■ 键详图 Key Specification



KDMA
50

KDMA50-05-60



零部件表 Table of Components

代号 No.	名称 Description	数量 Qty	材料和备注 Material and Remark
①	滑动块 Cam Slider	1	HT300
②	下滑块 Cam Slider(Lower)	1	45
③	螺旋弹簧 Coil Spring	2	TL22-90
⑥	底座 Cam Holder	1	45
⑦	导轨 Guide Bar	1	铜合金 Bronze
⑧	驱动块 Cam Driver	1	HT300
⑨	强制拉回 Positive Return Follower	1	45
⑩	内六角螺钉 Hexagon Socket Head Bolt	6	M8×40
⑪	内六角螺钉 Hexagon Socket Head Bolt	2	M10×30
⑫	内六角螺钉 Hexagon Socket Head Bolt	1	M8×18
⑬	弹簧销 Spring Guide Pin	2	45

加工力 Working Force kN(tonf)		弹簧力 Spring Force N(kgf)		总重量 Total Weight kg	代号 Catalog No.	(W)	(θ)	行程 Travel S	SANKYO 代号对照 Catalog No.
标准加工力 (100万回) Standard Working Force (one million strokes)	允许加工力 (30万回) Allowable Working Force (300,000 strokes)	初压 Initial Load	终压 Final Load						
19.6 (2.0)	39.2 (4.0)	108.6 (11.1)	651.6 (66.6)	20.0	KDMA	50	05	60	CMSA



Order

Catalog No. (W) - (θ) - S
KDMA 50 - 05 - 60



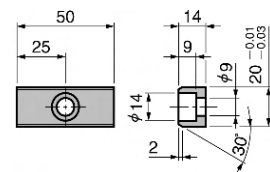
Option

追加编号 Option Code	明细 Specification
N13	驱动块底座销孔改为φ13 Dowel pin holes of cam holder and cam driver are changed to φ13.



Order **KDMA50-05-60-N13**

键详图 Key Specification



KDMA50-15-30

Cam Diagram

■ 零部件表 Table of Components

代号 No.	名称 Description	数量 Qty	材料和备注 Material and Remark
①	滑动块 Cam Slider	1	HT300
②	下滑块 Cam Slider(Lower)	1	45
③	螺旋弹簧 Coil Spring	2	TL22-90
⑥	底座 Cam Holder	1	45
⑦	导轨 Guide Bar	1	铜合金 Bronze
⑧	驱动块 Cam Driver	1	HT300
⑨	强制拉回 Positive Return Follower	1	45
⑩	内六角螺钉 Hexagon Socket Head Bolt	6	M8×40
⑪	内六角螺钉 Hexagon Socket Head Bolt	2	M10×30
⑫	内六角螺钉 Hexagon Socket Head Bolt	1	M8×18
⑬	弹簧销 Spring Guide Pin	2	45

加工力 Working Force kN(tonf)		弹簧力 Spring Force N(kgf)		总重量 Total Weight kg	代号 Catalog No.	(W)	(θ)	行程 Travel S	SANKYO 代号对照 Catalog No.
标准加工力 (100万回) Standard Working Force (one million strokes)	允许加工力 (30万回) Allowable Working Force (300,000 strokes)	初压 Initial Load	终压 Final Load						
19.6 (2.0)	39.2 (4.0)	108.6 (11.1)	651.6 (66.6)	17.5	KDMA	50	15	30	CMSA



Order

Catalog No. (W) - (θ) - S
KDMA 50 - 15 - 30



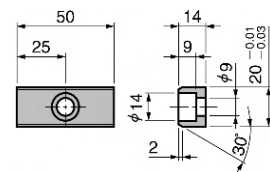
Option

追加编号 Option Code	明细 Specification
N13	驱动块底座销孔改为φ13 Dowel pin holes of cam holder and cam driver are changed to φ13.



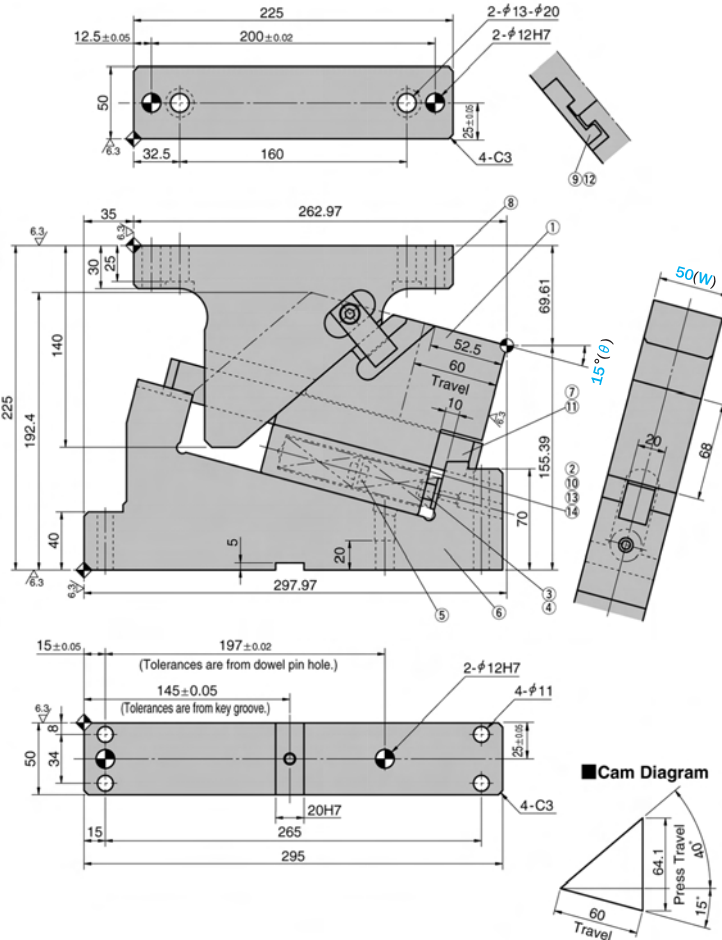
Order **KDMA50-15-30-N13**

■ 键详图 Key Specification



KDMA 50

KDMA50-15-60



零部件表 Table of Components

代号 No.	名称 Description	数量 Qty	材料和备注 Material and Remark
①	滑动块 Cam Slider	1	HT300
②	下滑块 Cam Slider(Lower)	1	45
③	螺旋弹簧 Coil Spring	2	TL22-90
⑥	底座 Cam Holder	1	45
⑦	导轨 Guide Bar	1	铜合金 Bronze
⑧	驱动块 Cam Driver	1	HT300
⑨	强制拉回 Positive Return Follower	1	45
⑩	内六角螺钉 Hexagon Socket Head Bolt	6	M8×40
⑪	内六角螺钉 Hexagon Socket Head Bolt	2	M10×30
⑫	内六角螺钉 Hexagon Socket Head Bolt	1	M8×18
⑬	弹簧销 Spring Guide Pin	2	45

加工力 Working Force kN(tonf)		弹簧力 Spring Force N(kgf)		总重量 Total Weight kg	代号 Catalog No.	(W)	(θ)	行程 Travel S	SANKYO 代号对照 Catalog No.
标准加工力 (100万回) Standard Working Force (one million strokes)	允许加工力 (30万回) Allowable Working Force (300,000 strokes)	初压 Initial Load	终压 Final Load						
19.6 (2.0)	39.2 (4.0)	108.6 (11.1)	651.6 (66.6)	22.0	KDMA	50	15	60	CMSA



Order

Catalog No. (W) - (θ) - S
KDMA 50 - 15 - 60



Option

追加编号 Option Code	明细 Specification
N13	驱动块底座销孔改为φ13 Dowel pin holes of cam holder and cam driver are changed to φ13.



Order **KDMA50-15-60-N13**

键详图 Key Specification

