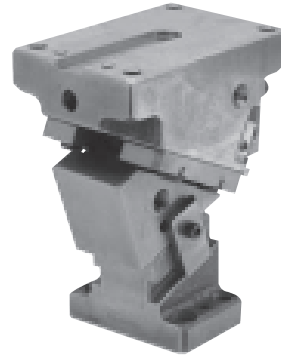
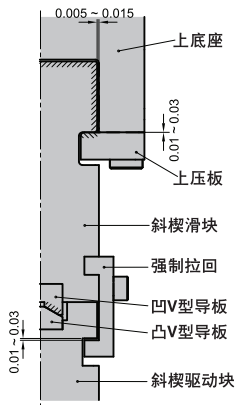


### KEAF 概要

- 此结构具备高刚性。
- 安装面宽度有65、100、200。
- 角度为 $0^{\circ} \sim 70^{\circ}$ ，(5° 间隙)。
- KEAF为比KEAC多增加一套V型导板。使得滑块与驱动块的导向更加精确。

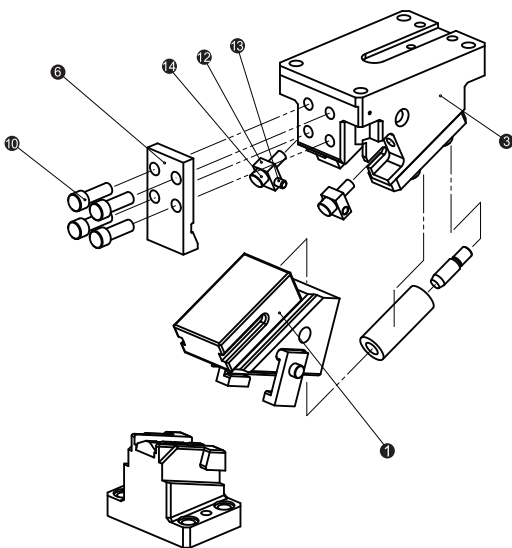


### ■ 滑块结构及强制拉回结构



- 上底座和滑块的间隙单侧加工至0.005~0.015。由此实现高刚性。
- 滑块(强制拉回)和驱动块的间隙加工至0.01~0.03。

### ■ KEAF的结构和拆解、装配



- KEAF的分解方法
  - 1、松开⑫卸下⑬及⑭。
  - 2、松开⑩卸下⑥。
  - 3、在后方将①从③上拔出。
- KEAF的装配方法
  - 1) 装配顺序与拆解相反。
  - ◆ 充分确认滑动部位是否无异物后涂上润滑脂并进行装配。
  - ◆ 由于对滑块和上底座的间隙进行管理因此要确认刻印的序号后进行装配。
  - ◆ 拆解、装配后要充分注意不要忘记紧固螺栓。

**KEAF65-00**

**零部件表**  
Table of Components

代号 No.	名称 Description	数量 Qty	材料和备注 Material and Remark
①	滑动块 Cam Slider	1	HT300
②	驱动块 Cam Driver	1	HT300
③	底座 Cam Holder	1	HT300
④	压板 Slide Plate	2	45
⑤	强制拉回 Positive Return Follower	2	45
⑥	挡板 Spring Plate	1	45
⑦	弹簧销 Spring Guide Pin	1	φ14 × 50
⑧	螺旋弹簧 Coil Spring	1	TL30-125
⑨	内六角螺钉 Hexagon Socket Head Bolt	4	M12 × 25
⑩	内六角螺钉 Hexagon Socket Head Bolt	4	M12 × 35
⑪	内六角螺钉 Hexagon Socket Head Bolt	2	M8 × 25
⑫	凹V型导板 Cam Guide Plate	1	铜合金 Bronze
⑬	凸V型导板 Cam Slide Plate	1	45

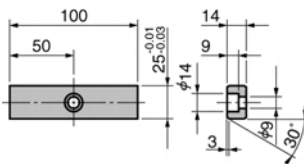
行程 Travel S	加工力 Working Force kN(tonf)		弹簧力 Spring Force N(kgf)		总重量 Total Weight kg	代号 Catalog No.	(W)	(θ)	销孔孔径选择 Selection of Dowel Pin Hole Diameter(H7)			SANKYO 代号对照 Catalog No.
	标准加工力 (100万回) Standard Working Force (one million strokes)	允许加工力 (30万回) Allowable Working Force (300,000 strokes)	初压 Initial Load	终压 Final Load					驱动块 Cam Driver	底座 Cam Holder	驱动块/底座 Cam Driver/ Cam Holder	
26.9	19.6 (2.0)	39.2 (4.0)	165.9 (16.9)	1066.5 (108.9)	19.5	KEAF	65	00	10-12-13			UCNBK



Order

Catalog No. **KEAF** (W) **65** - (θ) **00** - 销孔直径  
Dowel Pin Hole Diameter

■ 键详图 Key Specification



KEAF  
65

# KEAF65-05

**■ 零件表 Table of Components**

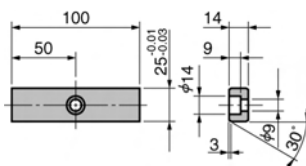
代号 No.	名称 Description	数量 Qty	材料和备注 Material and Remark
①	滑动块 Cam Slider	1	HT300
②	驱动块 Cam Driver	1	HT300
③	底座 Cam Holder	1	HT300
④	压板 Slide Plate	2	45
⑤	强制拉回 Positive Return Follower	2	45
⑥	挡板 Spring Plate	1	45
⑦	弹簧销 Spring Guide Pin	1	φ14 × 50
⑧	螺旋弹簧 Coil Spring	1	TL30-125
⑨	内六角螺钉 Hexagon Socket Head Bolt	4	M12 × 25
⑩	内六角螺钉 Hexagon Socket Head Bolt	4	M12 × 35
⑪	内六角螺钉 Hexagon Socket Head Bolt	2	M8 × 25
⑫	凹V型导板 Cam Guide Plate	1	铜合金 Bronze
⑬	凸V型导板 Cam Slide Plate	1	45

**■ Cam Diagram**

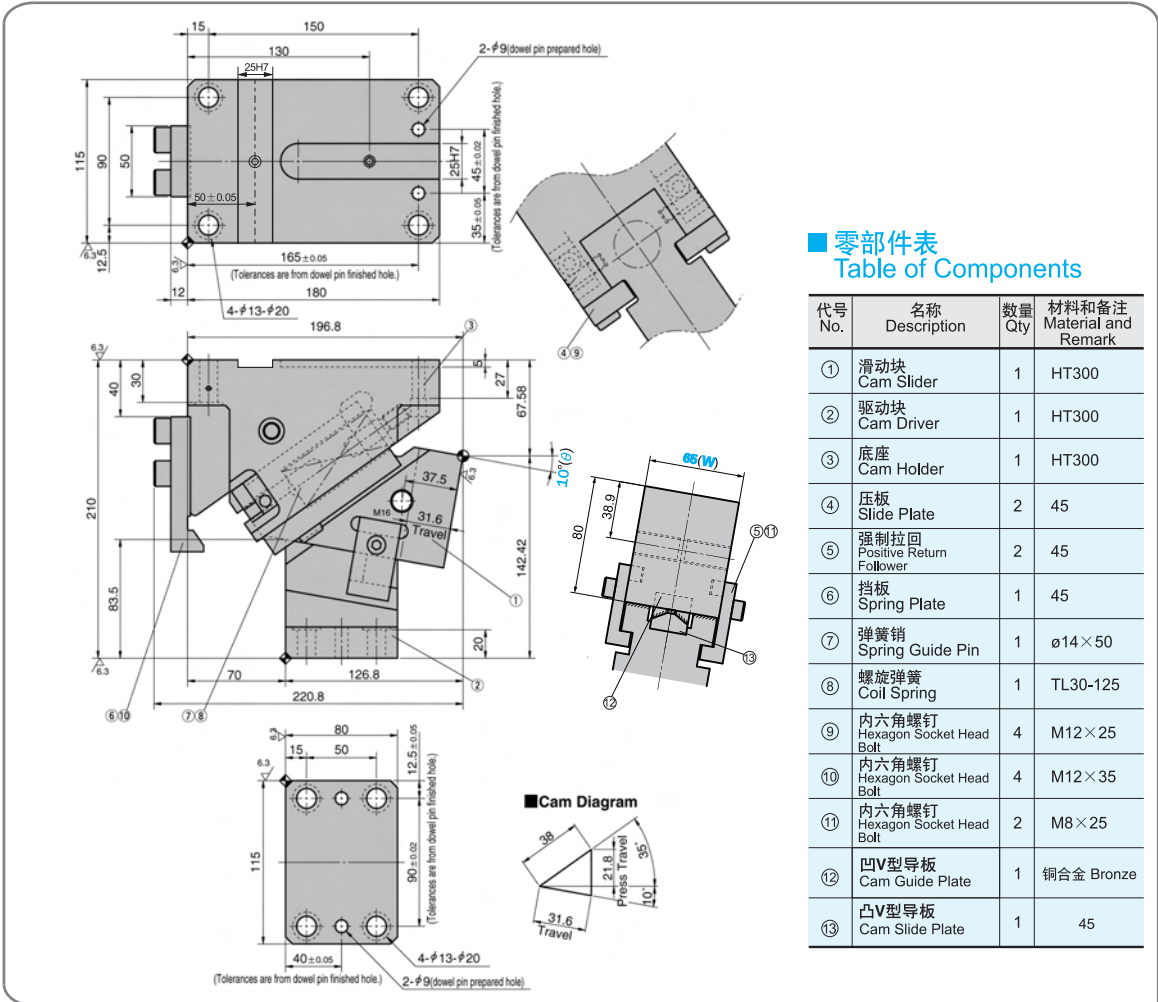
行程 Travel S	加工力 Working Force kN(tonf)		弹簧力 Spring Force N(kgf)		总重量 Total Weight kg	代号 Catalog No.	(W)	(θ)	销孔孔径选择 Selection of Dowel Pin Hole Diameter(H7)			SANKYO 代号对照 Catalog No.
	标准加工力 (100万回) Standard Working Force (one million strokes)	允许加工力 (30万回) Allowable Working Force (300,000 strokes)	初压 Initial Load	终压 Final Load					驱动块 Cam Driver	底座 Cam Holder	驱动块/底座 Cam Driver/ Cam Holder	
27.0	19.6 (2.0)	39.2 (4.0)	237.0 (24.2)	1137.6 (116.2)	19.8	KEAF	65	05	10-12-13			UCNBK

Order **Catalog No. KEAF** (W) **65** - (θ) **05** - 销孔直径 Dowel Pin Hole Diameter

■ 键详图 Key Specification



**KEAF65-10**



■ 零部件表  
Table of Components

代号 No.	名称 Description	数量 Qty	材料和备注 Material and Remark
①	滑动块 Cam Slider	1	HT300
②	驱动块 Cam Driver	1	HT300
③	底座 Cam Holder	1	HT300
④	压板 Slide Plate	2	45
⑤	强制拉回 Positive Return Follower	2	45
⑥	挡板 Spring Plate	1	45
⑦	弹簧销 Spring Guide Pin	1	φ14×50
⑧	螺旋弹簧 Coil Spring	1	TL30-125
⑨	内六角螺钉 Hexagon Socket Head Bolt	4	M12×25
⑩	内六角螺钉 Hexagon Socket Head Bolt	4	M12×35
⑪	内六角螺钉 Hexagon Socket Head Bolt	2	M8×25
⑫	凹V型导板 Cam Guide Plate	1	铜合金 Bronze
⑬	凸V型导板 Cam Slide Plate	1	45

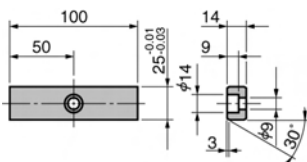
行程 Travel S	加工力 Working Force kN(tonf)		弹簧力 Spring Force N(kgf)		总重量 Total Weight kg	代号 Catalog No.	(W)	(θ)	销孔孔径选择 Selection of Dowel Pin Hole Diameter(H7)			SANKYO 代号对照 Catalog No.
	标准加工力 (100万回) Standard Working Force (one million strokes)	允许加工力 (30万回) Allowable Working Force (300,000 strokes)	初压 Initial Load	终压 Final Load					驱动块 Cam Driver	底座 Cam Holder	驱动块/底座 Cam Driver/ Cam Holder	
31.6	19.6 (2.0)	39.2 (4.0)	237.0 (24.2)	1137.6 (116.2)	19.3	KEAF	65	10	10-12-13			UCNBK



Order

Catalog No. **KEAF** (W) **65** - (θ) **10** - 销孔直径  
Dowel Pin Hole Diameter

■ 键详图 Key Specification



KEAF  
65

# KEAF65-15

**零部件表  
Table of Components**

代号 No.	名称 Description	数量 Qty	材料和备注 Material and Remark
①	滑动块 Cam Slider	1	HT300
②	驱动块 Cam Driver	1	HT300
③	底座 Cam Holder	1	HT300
④	压板 Slide Plate	2	45
⑤	强制拉回 Positive Return Follower	2	45
⑥	挡板 Spring Plate	1	45
⑦	弹簧销 Spring Guide Pin	1	φ14 × 50
⑧	螺旋弹簧 Coil Spring	1	TL30-125
⑨	内六角螺钉 Hexagon Socket Head Bolt	4	M12 × 25
⑩	内六角螺钉 Hexagon Socket Head Bolt	4	M12 × 35
⑪	内六角螺钉 Hexagon Socket Head Bolt	2	M8 × 25
⑫	凹V型导板 Cam Guide Plate	1	铜合金 Bronze
⑬	凸V型导板 Cam Slide Plate	1	45

**Cam Diagram**

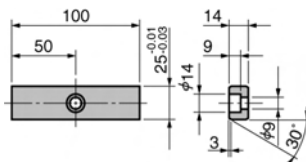
行程 Travel S	加工力 Working Force kN(tonf)		弹簧力 Spring Force N(kgf)		总重量 Total Weight kg	代号 Catalog No.	(W)	(θ)	销孔孔径选择 Selection of Dowel Pin Hole Diameter(H7)			SANKYO 代号对照 Catalog No.
	标准加工力 (100万回) Standard Working Force (one million strokes)	允许加工力 (30万回) Allowable Working Force (300,000 strokes)	初压 Initial Load	终压 Final Load					驱动块 Cam Driver	底座 Cam Holder	驱动块/底座 Cam Driver/ Cam Holder	
32.2	19.6 (2.0)	39.2 (4.0)	237.0 (24.2)	1137.6 (116.2)	19.6	KEAF	65	15	10-12-13			UCNBK



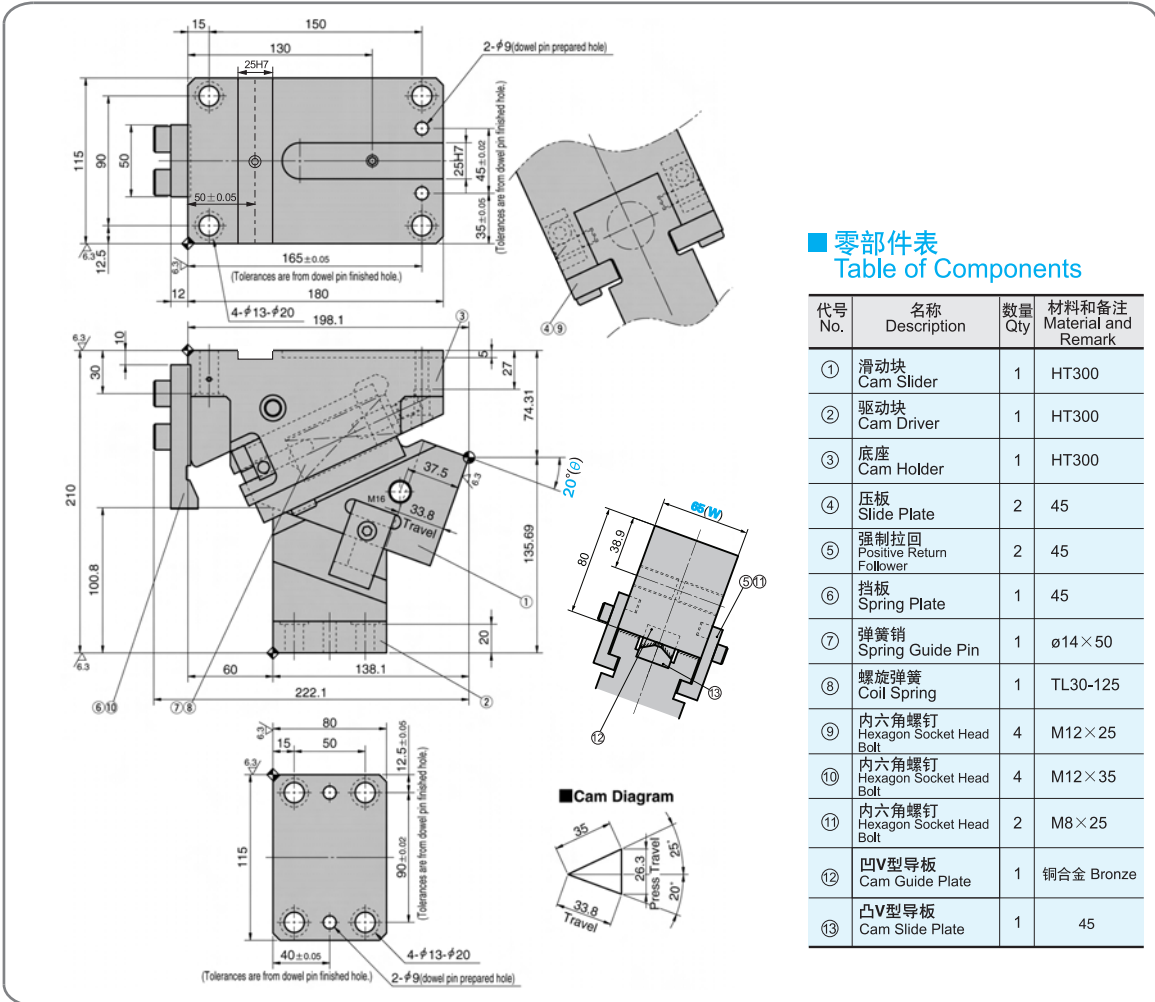
Order

Catalog No. **KEAF** (W) **65** - (θ) **15** - 销孔直径  
Dowel Pin Hole Diameter

■ 键详图 Key Specification



**KEAF65-20**



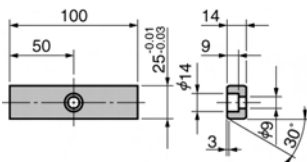
行程 Travel S	加工力 Working Force kN(tonf)		弹簧力 Spring Force N(kgf)		总重量 Total Weight kg	代号 Catalog No.	(W)	(θ)	销孔孔径选择 Selection of Dowel Pin Hole Diameter(H7)			SANKYO 代号对照 Catalog No.
	标准加工力 (100万回) Standard Working Force (one million strokes)	允许加工力 (30万回) Allowable Working Force (300,000 strokes)	初压 Initial Load	终压 Final Load					驱动块 Cam Driver	底座 Cam Holder	驱动块/底座 Cam Driver/ Cam Holder	
33.8	19.6 (2.0)	39.2 (4.0)	308.1 (31.5)	1137.6 (116.2)	18.1	KEAF	65	20	10-12-13			UCNBK



Order

Catalog No. **KEAF** (W) **65** - (θ) **20** - 销孔直径 Dowel Pin Hole Diameter

**■ 键详图 Key Specification**



KEAF 65

# KEAF65-25

**■ 零部件表 Table of Components**

代号 No.	名称 Description	数量 Qty	材料和备注 Material and Remark
①	滑动块 Cam Slider	1	HT300
②	驱动块 Cam Driver	1	HT300
③	底座 Cam Holder	1	HT300
④	压板 Slide Plate	2	45
⑤	强制拉回 Positive Return Follower	2	45
⑥	挡板 Spring Plate	1	45
⑦	弹簧销 Spring Guide Pin	1	φ14×50
⑧	螺旋弹簧 Coil Spring	1	TL30-125
⑨	内六角螺钉 Hexagon Socket Head Bolt	4	M12×25
⑩	内六角螺钉 Hexagon Socket Head Bolt	4	M12×35
⑪	内六角螺钉 Hexagon Socket Head Bolt	2	M8×25
⑫	凹V型导板 Cam Guide Plate	1	铜合金 Bronze
⑬	凸V型导板 Cam Slide Plate	1	45

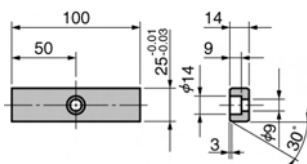
行程 Travel S	加工力 Working Force kN(tonf)		弹簧力 Spring Force N(kgf)		总重量 Total Weight kg	代号 Catalog No.	(W)	(θ)	销孔孔径选择 Selection of Dowel Pin Hole Diameter(H7)			SANKYO 代号对照 Catalog No.
	标准加工力 (100万回) Standard Working Force (one million strokes)	允许加工力 (30万回) Allowable Working Force (300,000 strokes)	初压 Initial Load	终压 Final Load					驱动块 Cam Driver	底座 Cam Holder	驱动块/底座 Cam Driver/ Cam Holder	
35.0	19.6 (2.0)	39.2 (4.0)	308.1 (31.5)	1137.6 (116.2)	18.4	KEAF	65	25	10-12-13			UCNBK



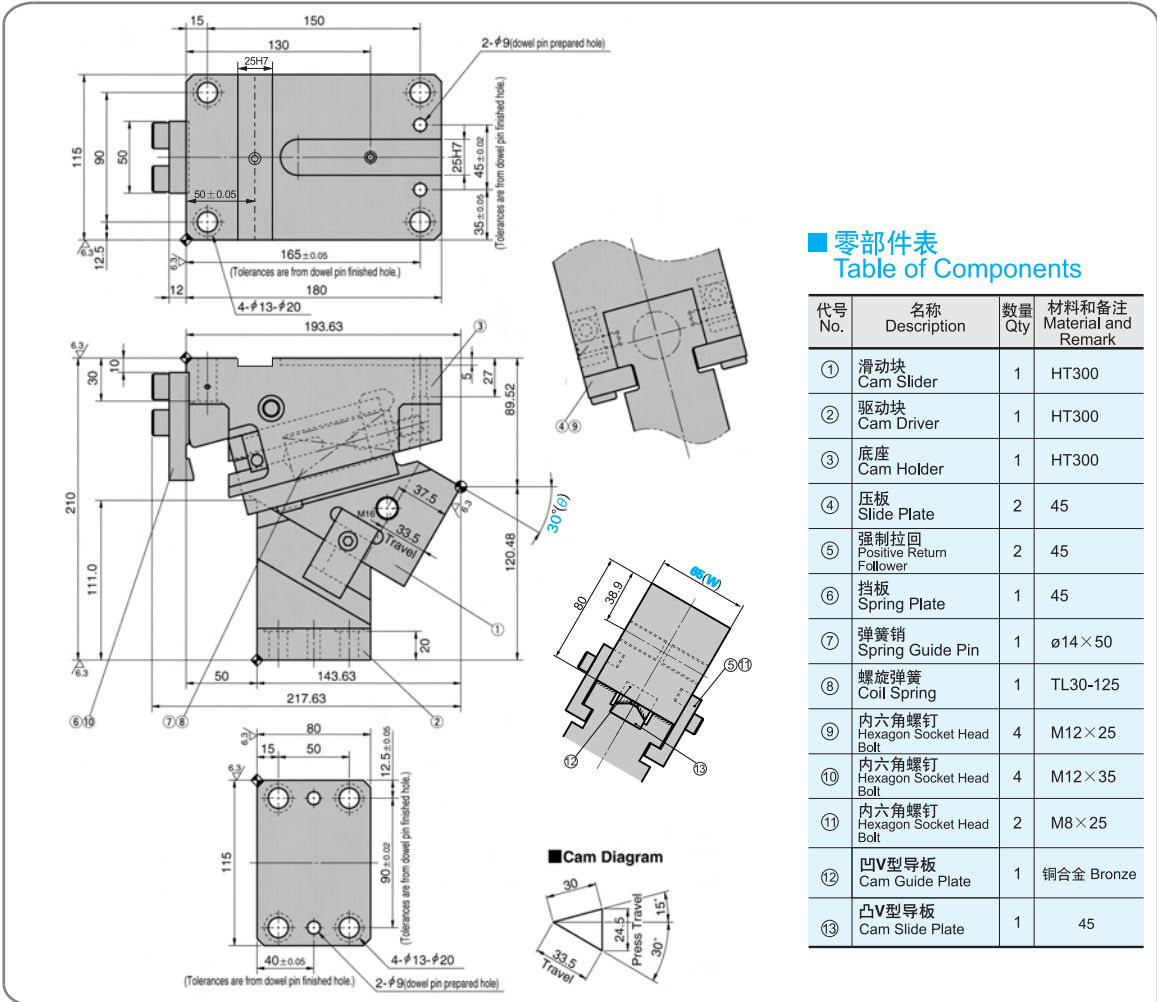
Order

Catalog No. **KEAF** (W) **65** - (θ) **25** - 销孔直径  
Dowel Pin Hole Diameter

■ 键详图 Key Specification



# KEAF65-30



## 零部件表 Table of Components

代号 No.	名称 Description	数量 Qty	材料和备注 Material and Remark
①	滑动块 Cam Slider	1	HT300
②	驱动块 Cam Driver	1	HT300
③	底座 Cam Holder	1	HT300
④	压板 Slide Plate	2	45
⑤	强制拉回 Positive Return Follower	2	45
⑥	挡板 Spring Plate	1	45
⑦	弹簧销 Spring Guide Pin	1	φ14×50
⑧	螺旋弹簧 Coil Spring	1	TL30-125
⑨	内六角螺钉 Hexagon Socket Head Bolt	4	M12×25
⑩	内六角螺钉 Hexagon Socket Head Bolt	4	M12×35
⑪	内六角螺钉 Hexagon Socket Head Bolt	2	M8×25
⑫	凹V型导板 Cam Guide Plate	1	铜合金 Bronze
⑬	凸V型导板 Cam Slide Plate	1	45

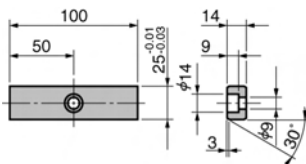
行程 Travel S	加工力 Working Force kN(tonf)		弹簧力 Spring Force N(kgf)		总重量 Total Weight kg	代号 Catalog No.	(W)	(θ)	销孔孔径选择 Selection of Dowel Pin Hole Diameter(H7)			SANKYO 代号对照 Catalog No.
	标准加工力 (100万回) Standard Working Force (one million strokes)	允许加工力 (30万回) Allowable Working Force (300,000 strokes)	初压 Initial Load	终压 Final Load					驱动块 Cam Driver	底座 Cam Holder	驱动块/底座 Cam Driver/ Cam Holder	
33.5	23.5 (2.4)	47.0 (4.8)	426.6 (43.6)	1137.6 (116.2)	17.7	KEAF	65	30	10-12-13			UCNBK



Order

Catalog No. **KEAF** (W) **65** - (θ) **30** - 销孔直径  
Dowel Pin Hole Diameter

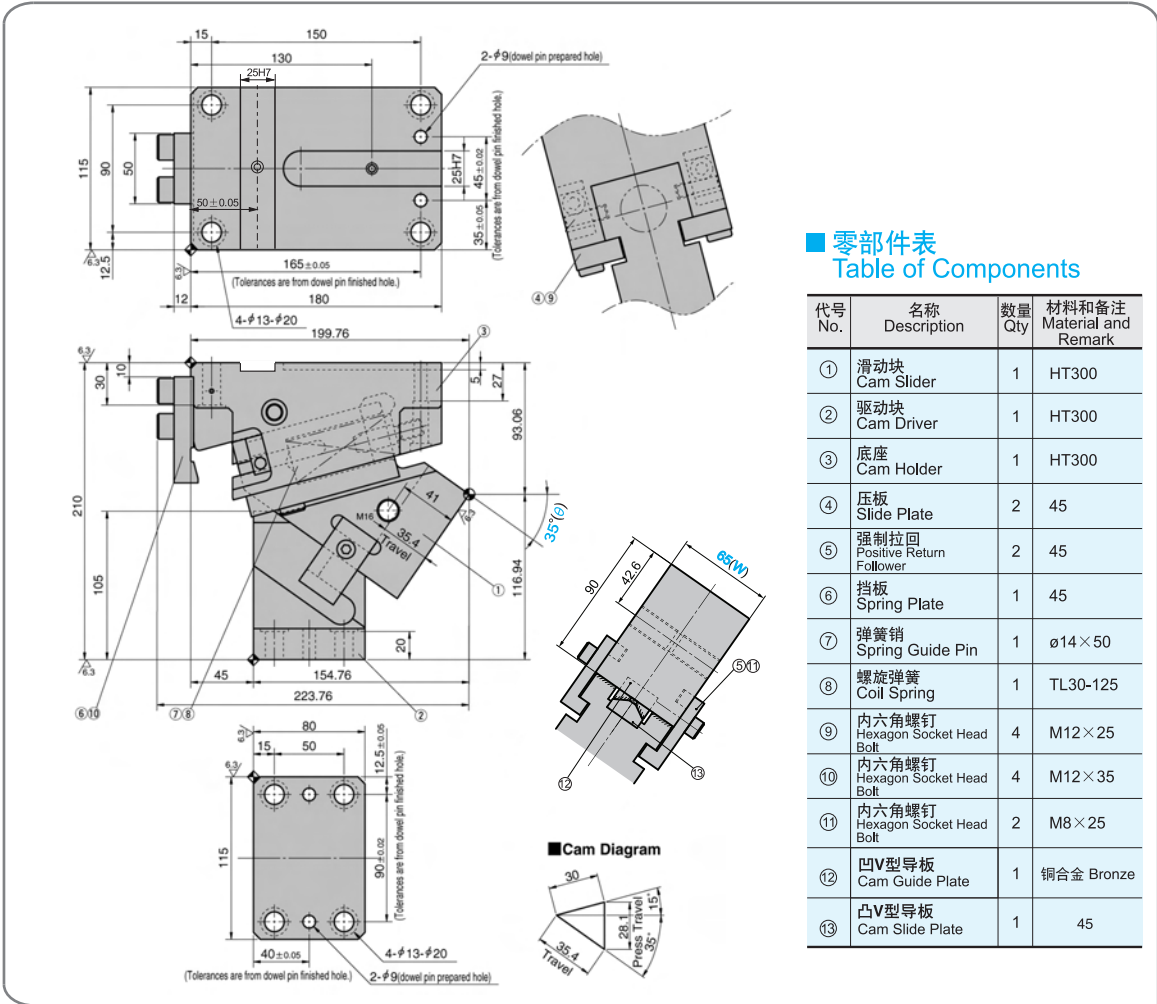
## ■ 键详图 Key Specification



KEAF  
65



# KEAF65-35



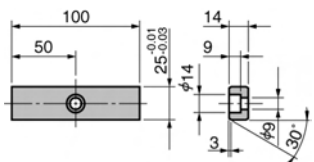
## 零部件表 Table of Components

代号 No.	名称 Description	数量 Qty	材料和备注 Material and Remark
①	滑动块 Cam Slider	1	HT300
②	驱动块 Cam Driver	1	HT300
③	底座 Cam Holder	1	HT300
④	压板 Slide Plate	2	45
⑤	强制拉回 Positive Return Follower	2	45
⑥	挡板 Spring Plate	1	45
⑦	弹簧销 Spring Guide Pin	1	φ14×50
⑧	螺旋弹簧 Coil Spring	1	TL30-125
⑨	内六角螺钉 Hexagon Socket Head Bolt	4	M12×25
⑩	内六角螺钉 Hexagon Socket Head Bolt	4	M12×35
⑪	内六角螺钉 Hexagon Socket Head Bolt	2	M8×25
⑫	凹V型导板 Cam Guide Plate	1	铜合金 Bronze
⑬	凸V型导板 Cam Slide Plate	1	45

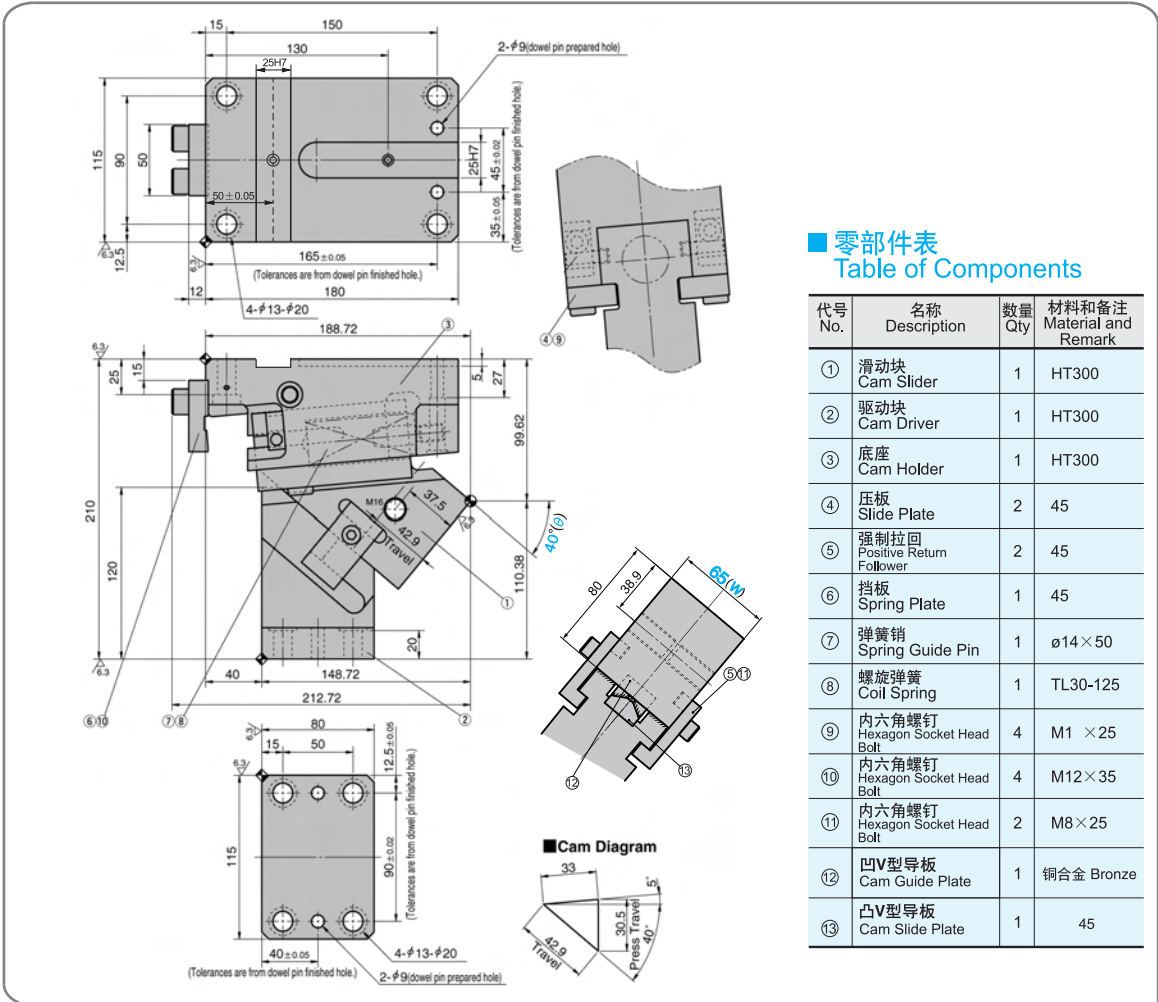
行程 Travel S	加工力 Working Force kN(tonf)		弹簧力 Spring Force N(kgf)		总重量 Total Weight kg	代号 Catalog No.	(W)	(θ)	销孔孔径选择 Selection of Dowel Pin Hole Diameter(H7)			SANKYO 代号对照 Catalog No.
	标准加工力 (100万回) Standard Working Force (one million strokes)	允许加工力 (30万回) Allowable Working Force (300,000 strokes)	初压 Initial Load	终压 Final Load					驱动块 Cam Driver	底座 Cam Holder	驱动块/底座 Cam Driver/ Cam Holder	
35.4	23.5 (2.4)	47.0 (4.8)	426.6 (43.6)	1137.6 (116.2)	18.0	KEAF	65	35	10-12-13			UCNBK

Order **Catalog No.** **KEAF** (W) **65** - (θ) **35** - 销孔直径  
Dowel Pin Hole Diameter

### 键详图 Key Specification



**KEAF65-40**



**零部件表**  
Table of Components

代号 No.	名称 Description	数量 Qty	材料和备注 Material and Remark
①	滑动块 Cam Slider	1	HT300
②	驱动块 Cam Driver	1	HT300
③	底座 Cam Holder	1	HT300
④	压板 Slide Plate	2	45
⑤	强制拉回 Positive Return Follower	2	45
⑥	挡板 Spring Plate	1	45
⑦	弹簧销 Spring Guide Pin	1	φ14 × 50
⑧	螺旋弹簧 Coil Spring	1	TL30-125
⑨	内六角螺钉 Hexagon Socket Head Bolt	4	M1 × 25
⑩	内六角螺钉 Hexagon Socket Head Bolt	4	M12 × 35
⑪	内六角螺钉 Hexagon Socket Head Bolt	2	M8 × 25
⑫	凹V型导板 Cam Guide Plate	1	铜合金 Bronze
⑬	凸V型导板 Cam Slide Plate	1	45

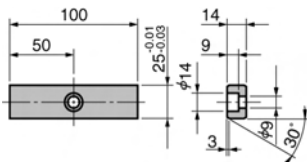
行程 Travel S	加工力 Working Force kN(tonf)		弹簧力 Spring Force N(kgf)		总重量 Total Weight kg	代号 Catalog No.	(W)	(θ)	销孔孔径选择 Selection of Dowel Pin Hole Diameter(H7)			SANKYO 代号对照 Catalog No.
	标准加工力 (100万回) Standard Working Force (one million strokes)	允许加工力 (30万回) Allowable Working Force (300,000 strokes)	初压 Initial Load	终压 Final Load					驱动块 Cam Driver	底座 Cam Holder	驱动块/底座 Cam Driver/ Cam Holder	
42.9	23.5 (2.4)	47.0 (4.8)	355.5 (36.3)	1137.6 (116.2)	16.9	KEAF	65	40	10-12-13			UCNBK



Order

Catalog No. **KEAF** (W) **65** - (θ) **40** - 销孔直径  
Dowel Pin Hole Diameter

**键详图 Key Specification**



# KEAF65-45

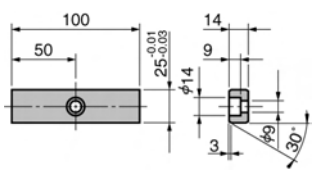
**■ 零部件表 Table of Components**

代号 No.	名称 Description	数量 Qty	材料和备注 Material and Remark
①	滑动块 Cam Slider	1	HT300
②	驱动块 Cam Driver	1	HT300
③	底座 Cam Holder	1	HT300
④	压板 Slide Plate	2	45
⑤	强制拉回 Positive Return Follower	2	45
⑥	挡板 Spring Plate	1	45
⑦	弹簧销 Spring Guide Pin	1	φ14 × 50
⑧	螺旋弹簧 Coil Spring	1	TL30-125
⑨	内六角螺钉 Hexagon Socket Head Bolt	4	M12 × 25
⑩	内六角螺钉 Hexagon Socket Head Bolt	4	M12 × 35
⑪	内六角螺钉 Hexagon Socket Head Bolt	2	M8 × 25
⑫	凹V型导板 Cam Guide Plate	1	铜合金 Bronze
⑬	凸V型导板 Cam Slide Plate	1	45

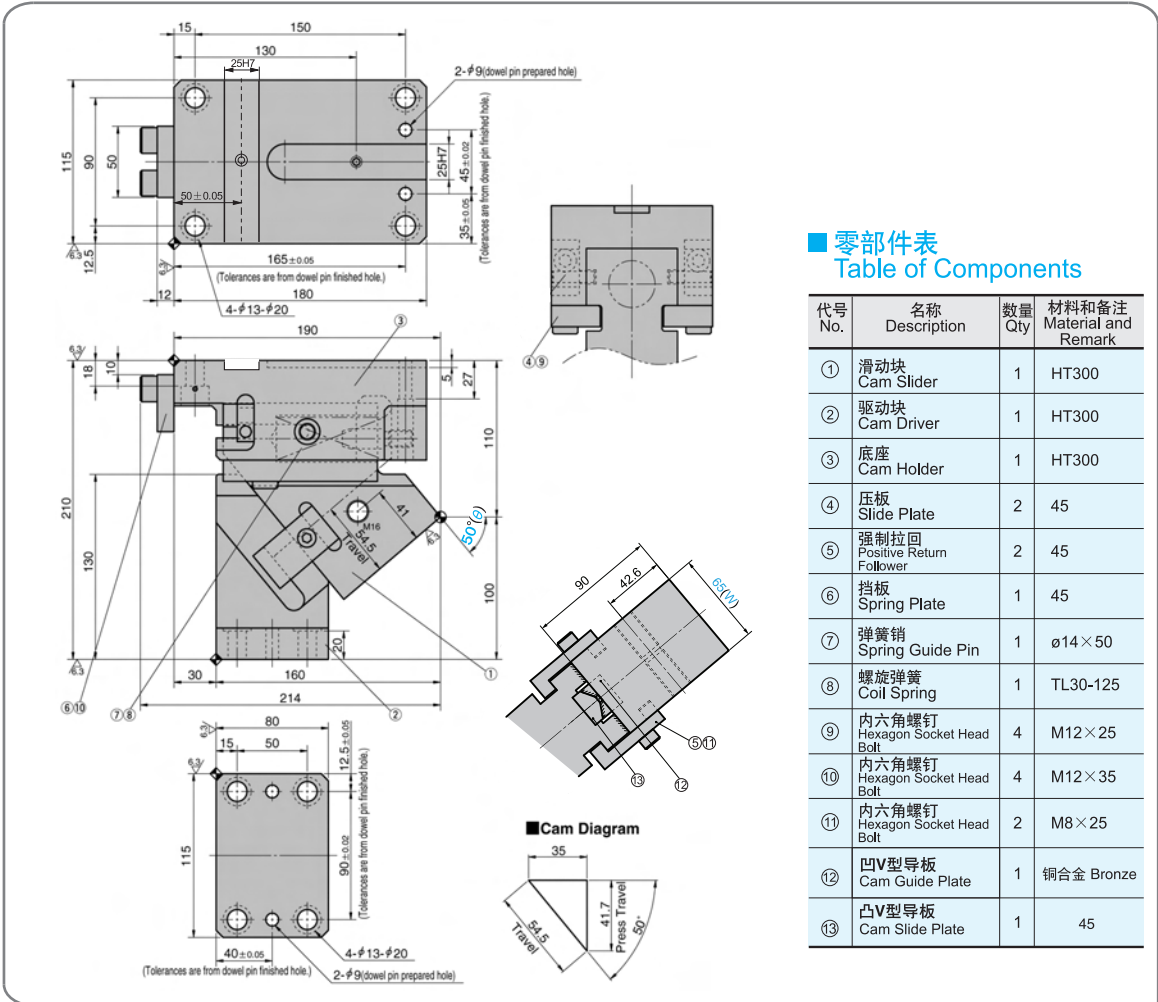
行程 Travel S	加工力 Working Force kN(tonf)		弹簧力 Spring Force N(kgf)		总重量 Total Weight kg	代号 Catalog No.	(W)	(θ)	销孔孔径选择 Selection of Dowel Pin Hole Diameter(H7)			SANKYO 代号对照 Catalog No.
	标准加工力 (100万回) Standard Working Force (one million strokes)	允许加工力 (30万回) Allowable Working Force (300,000 strokes)	初压 Initial Load	终压 Final Load					驱动块 Cam Driver	底座 Cam Holder	驱动块/底座 Cam Driver/ Cam Holder	
46.5	23.5 (2.4)	47.0 (4.8)	355.5 (36.3)	1137.6 (116.2)	17.1	KEAF	65	45	10-12-13			UCNBK

Order **Catalog No. KEAF** (W) - (θ) - 销孔直径 Dowel Pin Hole Diameter **65 - 45**

■ 键详图 Key Specification



**KEAF65-50**



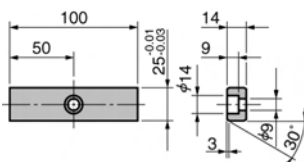
行程 Travel S	加工力 Working Force kN(tonf)		弹簧力 Spring Force N(kgf)		总重量 Total Weight kg	代号 Catalog No.	(W)	(θ)	销孔孔径选择 Selection of Dowel Pin Hole Diameter(H7)			SANKYO 代号对照 Catalog No.
	标准加工力 (100万回) Standard Working Force (one million strokes)	允许加工力 (30万回) Allowable Working Force (300,000 strokes)	初压 Initial Load	终压 Final Load					驱动块 Cam Driver	底座 Cam Holder	驱动块/底座 Cam Driver/ Cam Holder	
54.5	29.4 (3.0)	58.8 (6.0)	308.1 (31.5)	1137.6 (116.2)	16.8	KEAF	65	50	10-12-13			UCNBK



Order

Catalog No. **KEAF** (W) **65** - (θ) **50** - 销孔直径  
Dowel Pin Hole Diameter

■ 键详图 Key Specification



KEAF  
65

# KEAF65-55

**Cam Diagram**

43.6 Travel  
55° Press Travel

**零部件表  
Table of Components**

代号 No.	名称 Description	数量 Qty	材料和备注 Material and Remark
①	滑动块 Cam Slider	1	HT300
②	驱动块 Cam Driver	1	HT300
③	底座 Cam Holder	1	HT300
④	压板 Slide Plate	2	45
⑤	强制拉回 Positive Return Follower	2	45
⑥	挡板 Spring Plate	1	45
⑦	弹簧销 Spring Guide Pin	1	φ14 × 50
⑧	螺旋弹簧 Coil Spring	1	TL30-100
⑨	内六角螺钉 Hexagon Socket Head Bolt	4	M12 × 25
⑩	内六角螺钉 Hexagon Socket Head Bolt	4	M12 × 35
⑪	内六角螺钉 Hexagon Socket Head Bolt	2	M8 × 25
⑫	凹V型导板 Cam Guide Plate	1	铜合金 Bronze
⑬	凸V型导板 Cam Slide Plate	1	45

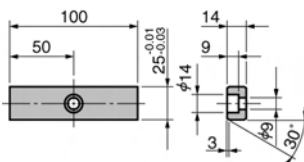
行程 Travel S	加工力 Working Force kN(tonf)		弹簧力 Spring Force N(kgf)		总重量 Total Weight kg	代号 Catalog No.	(W)	(θ)	销孔孔径选择 Selection of Dowel Pin Hole Diameter(H7)			SANKYO 代号对照 Catalog No.
	标准加工力 (100万回) Standard Working Force (one million strokes)	允许加工力 (30万回) Allowable Working Force (300,000 strokes)	初压 Initial Load	终压 Final Load					驱动块 Cam Driver	底座 Cam Holder	驱动块/底座 Cam Driver/ Cam Holder	
43.6	29.4 (3.0)	58.8 (6.0)	297.0 (30.3)	1039.5 (106.1)	17.8	KEAF	65	55	10-12-13			UCNBK



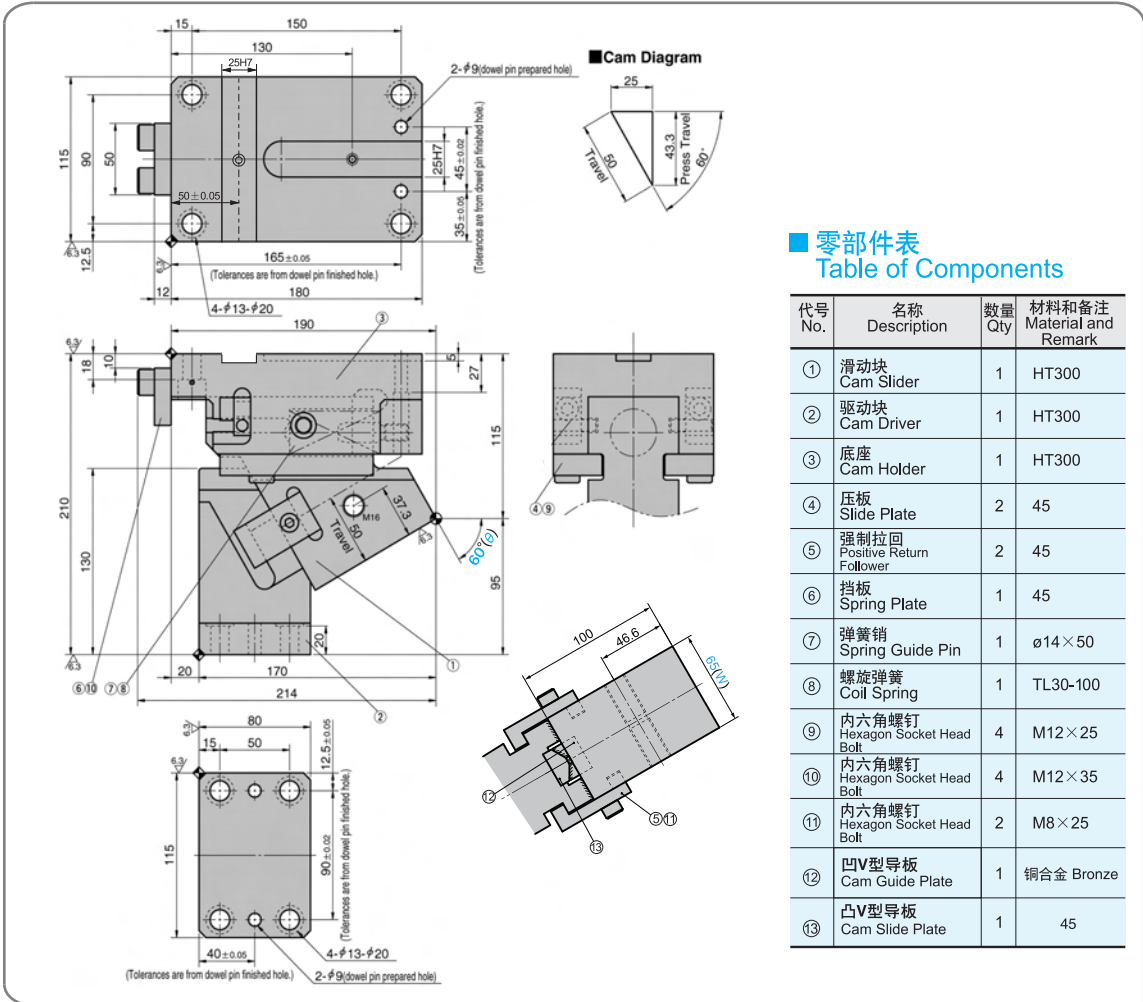
Order

Catalog No. **KEAF** (W) **65** - (θ) **55** - 销孔直径  
Dowel Pin Hole Diameter

■ 键详图 Key Specification



# KEAF65-60



## 零部件表 Table of Components

代号 No.	名称 Description	数量 Qty	材料和备注 Material and Remark
①	滑动块 Cam Slider	1	HT300
②	驱动块 Cam Driver	1	HT300
③	底座 Cam Holder	1	HT300
④	压板 Slide Plate	2	45
⑤	强制拉回 Positive Return Follower	2	45
⑥	挡板 Spring Plate	1	45
⑦	弹簧销 Spring Guide Pin	1	φ14×50
⑧	螺旋弹簧 Coil Spring	1	TL30-100
⑨	内六角螺钉 Hexagon Socket Head Bolt	4	M12×25
⑩	内六角螺钉 Hexagon Socket Head Bolt	4	M12×35
⑪	内六角螺钉 Hexagon Socket Head Bolt	2	M8×25
⑫	凹V型导板 Cam Guide Plate	1	铜合金 Bronze
⑬	凸V型导板 Cam Slide Plate	1	45

行程 Travel S	加工力 Working Force kN(tonf)		弹簧力 Spring Force N(kgf)		总重量 Total Weight kg	代号 Catalog No.	(W)	(θ)	销孔孔径选择 Selection of Dowel Pin Hole Diameter(H7)			SANKYO 代号对照 Catalog No.
	标准加工力 (100万回) Standard Working Force (one million strokes)	允许加工力 (30万回) Allowable Working Force (300,000 strokes)	初压 Initial Load	终压 Final Load					驱动块 Cam Driver	底座 Cam Holder	驱动块/底座 Cam Driver/ Cam Holder	
50.0	29.4 (3.0)	58.8 (6.0)	297.0 (30.3)	1039.5 (106.1)	17.3	KEAF	65	60	10-12-13			UCNBK



Order

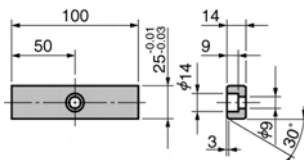
Catalog No.

KEAF

(W) - (θ)  
65 - 60

销孔直径  
Dowel Pin Hole Diameter

## 键详图 Key Specification



# KEAF65-65

**Cam Diagram**

2-φ9 (dowel pin prepared hole)

25H7

25 ± 0.05, 45 ± 0.05 (Tolerances are from dowel pin finished hole)

15, 150, 130, 20, 115, 90, 50, 12.5, 6.3, 165 ± 0.05, 180, 4-φ13-φ20, 190, 18, 10, 6, 27, 130, 4.9, 210, 130, 6.3, 7.8, 214, 80, 15, 50, 12.5 ± 0.05, 90 ± 0.05, 115, 40 ± 0.05, 4-φ13-φ20, 2-φ9 (dowel pin prepared hole), 110, 43.3, 65(10), 65(10), 85(6), 45.7, 43, 80, 130, 20, 190, 2, 13, 11, 10, 11

**Table of Components**

代号 No.	名称 Description	数量 Qty	材料和备注 Material and Remark
①	滑动块 Cam Slider	1	HT300
②	驱动块 Cam Driver	1	HT300
③	底座 Cam Holder	1	HT300
④	压板 Slide Plate	2	45
⑤	强制拉回 Positive Return Follower	2	45
⑥	挡板 Spring Plate	1	45
⑦	弹簧销 Spring Guide Pin	1	φ14 × 50
⑧	螺旋弹簧 Coil Spring	1	TL30-100
⑨	内六角螺钉 Hexagon Socket Head Bolt	4	M12 × 25
⑩	内六角螺钉 Hexagon Socket Head Bolt	4	M12 × 35
⑪	内六角螺钉 Hexagon Socket Head Bolt	2	M8 × 25
⑫	凹V型导板 Cam Guide Plate	1	铜合金 Bronze
⑬	凸V型导板 Cam Slide Plate	1	45

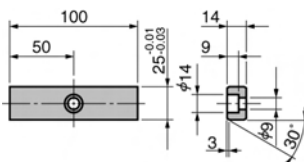
行程 Travel S	加工力 Working Force kN(tonf)		弹簧力 Spring Force N(kgf)		总重量 Total Weight kg	代号 Catalog No.	(W)	(θ)	销孔孔径选择 Selection of Dowel Pin Hole Diameter(H7)			SANKYO 代号对照 Catalog No.
	标准加工力 (100万回) Standard Working Force (one million strokes)	允许加工力 (30万回) Allowable Working Force (300,000 strokes)	初压 Initial Load	终压 Final Load					驱动块 Cam Driver	底座 Cam Holder	驱动块/底座 Cam Driver/ Cam Holder	
47.3	29.4 (3.0)	58.8 (6.0)	297.0 (30.3)	891.0 (90.9)	18.5	KEAF	65	65	10-12-13			UCNBK



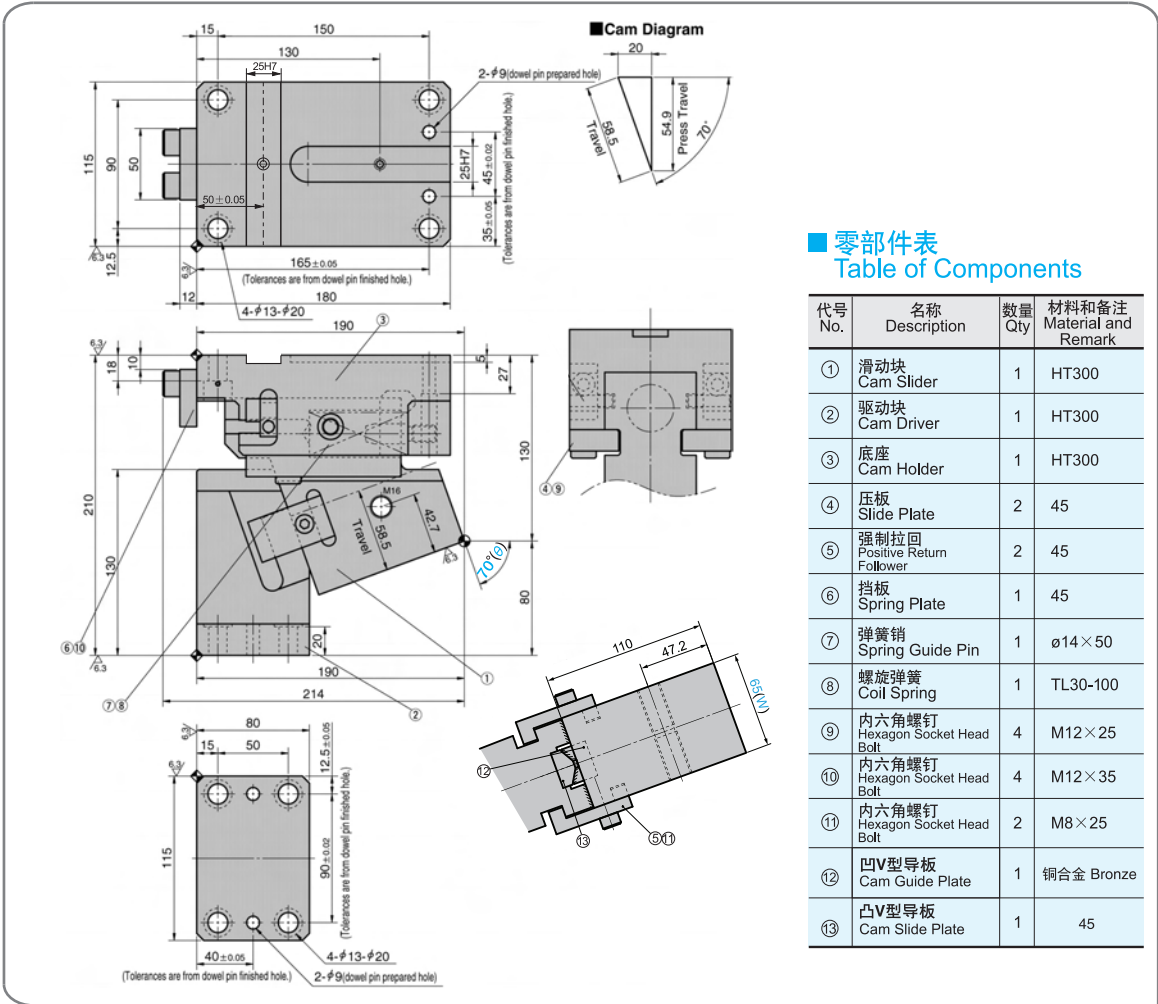
Order

Catalog No. **KEAF** (W) **65** - (θ) **65** - 销孔直径 Dowel Pin Hole Diameter

## ■ 键详图 Key Specification



# KEAF65-70



## 零部件表 Table of Components

代号 No.	名称 Description	数量 Qty	材料和备注 Material and Remark
①	滑动块 Cam Slider	1	HT300
②	驱动块 Cam Driver	1	HT300
③	底座 Cam Holder	1	HT300
④	压板 Slide Plate	2	45
⑤	强制拉回 Positive Return Follower	2	45
⑥	挡板 Spring Plate	1	45
⑦	弹簧销 Spring Guide Pin	1	φ14×50
⑧	螺旋弹簧 Coil Spring	1	TL30-100
⑨	内六角螺钉 Hexagon Socket Head Bolt	4	M12×25
⑩	内六角螺钉 Hexagon Socket Head Bolt	4	M12×35
⑪	内六角螺钉 Hexagon Socket Head Bolt	2	M8×25
⑫	凹V型导板 Cam Guide Plate	1	铜合金 Bronze
⑬	凸V型导板 Cam Slide Plate	1	45

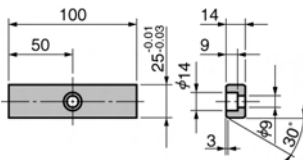
行程 Travel S	加工力 Working Force kN(tonf)		弹簧力 Spring Force N(kgf)		总重量 Total Weight kg	代号 Catalog No.	(W)	(θ)	销孔孔径选择 Selection of Dowel Pin Hole Diameter(H7)			SANKYO 代号对照 Catalog No.
	标准加工力 (100万回) Standard Working Force (one million strokes)	允许加工力 (30万回) Allowable Working Force (300,000 strokes)	初压 Initial Load	终压 Final Load					驱动块 Cam Driver	底座 Cam Holder	驱动块/底座 Cam Driver/Cam Holder	
58.5	29.4 (3.0)	58.8 (6.0)	297.0 (30.3)	891.0 (90.9)	18.4	KEAF	65	70	10-12-13			UCNBK



Order

Catalog No. **KEAF** (W) **65** - (θ) **70** - 销孔直径 Dowel Pin Hole Diameter

## 键详图 Key Specification



KEAF  
65



# KEAF100-00

2-φ11 (dowel pin prepared hole)

25H7

40±0.05 80±0.02 (Tolerances are from dowel pin finished hole.)

225±0.05 (Tolerances are from dowel pin finished hole.)

4-φ18-φ26

17

240

160

130

75

60±0.05

15

6.3

20

200

3

4.10

1

6.3

55

38

5

32

85

280

28.3

7.8

0°(θ)

9

95

60

180

30

273

2

160

100(W)

28.3

0°(K)

100

65

6.3

50

65

90

120

13

14

45

28.3

Travel

40

28.3

Travel

45

■ Cam Diagram

行程 S

加工力 Working Force kN(tonf)

标准加工力 (100万回) Standard Working Force (one million strokes)

允许加工力 (30万回) Allowable Working Force (300,000 strokes)

弹簧力 Spring Force N(kgf)

初压 Initial Load

终压 Final Load

总重量 Total Weight kg

代号 Catalog No.

(W) (θ)

销孔孔径选择 Selection of Dowel Pin Hole Diameter(H7)

驱动块 Cam Driver

底座 Cam Holder

驱动块/底座 Cam Driver/ Cam Holder

SANKYO 代号对照 Catalog No.

代号 No.	名称 Description	数量 Qty	材料和备注 Material and Remark
①	滑动块 Cam Slider	1	HT300
②	驱动块 Cam Driver	1	HT300
③	底座 Cam Holder	1	HT300
④	压板 Slide Plate	2	45
⑤	强制拉回 Positive Return Follower	2	45
⑥	挡板 Spring Plate	1	45
⑦	弹簧销 Spring Guide Pin	2	φ14×50
⑧	螺旋弹簧 Coil Spring	2	TM30-175
⑨	缓冲块 Stopper	2	φ22×15
⑩	内六角螺钉 Hexagon Socket Head Bolt	6	M12×35
⑪	内六角螺钉 Hexagon Socket Head Bolt	2	M8×25
⑫	内六角螺钉 Hexagon Socket Head Bolt	4	M16×45
⑬	凹V型导板 Cam Guide Plate	1	铜合金 Bronze
⑭	凸V型导板 Cam Slide Plate	1	45

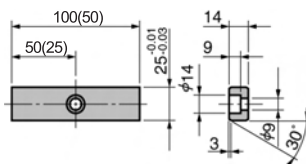
行程 Travel S	加工力 Working Force kN(tonf)		弹簧力 Spring Force N(kgf)		总重量 Total Weight kg	代号 Catalog No.	(W)	(θ)	销孔孔径选择 Selection of Dowel Pin Hole Diameter(H7)			SANKYO 代号对照 Catalog No.
	标准加工力 (100万回) Standard Working Force (one million strokes)	允许加工力 (30万回) Allowable Working Force (300,000 strokes)	初压 Initial Load	终压 Final Load					驱动块 Cam Driver	底座 Cam Holder	驱动块/底座 Cam Driver/ Cam Holder	
28.3	44.1 (4.5)	88.2 (9.0)	313.0 (31.9)	2817.0 (287.1)	47.0	KEAF	100	00	12-13			UCNBK



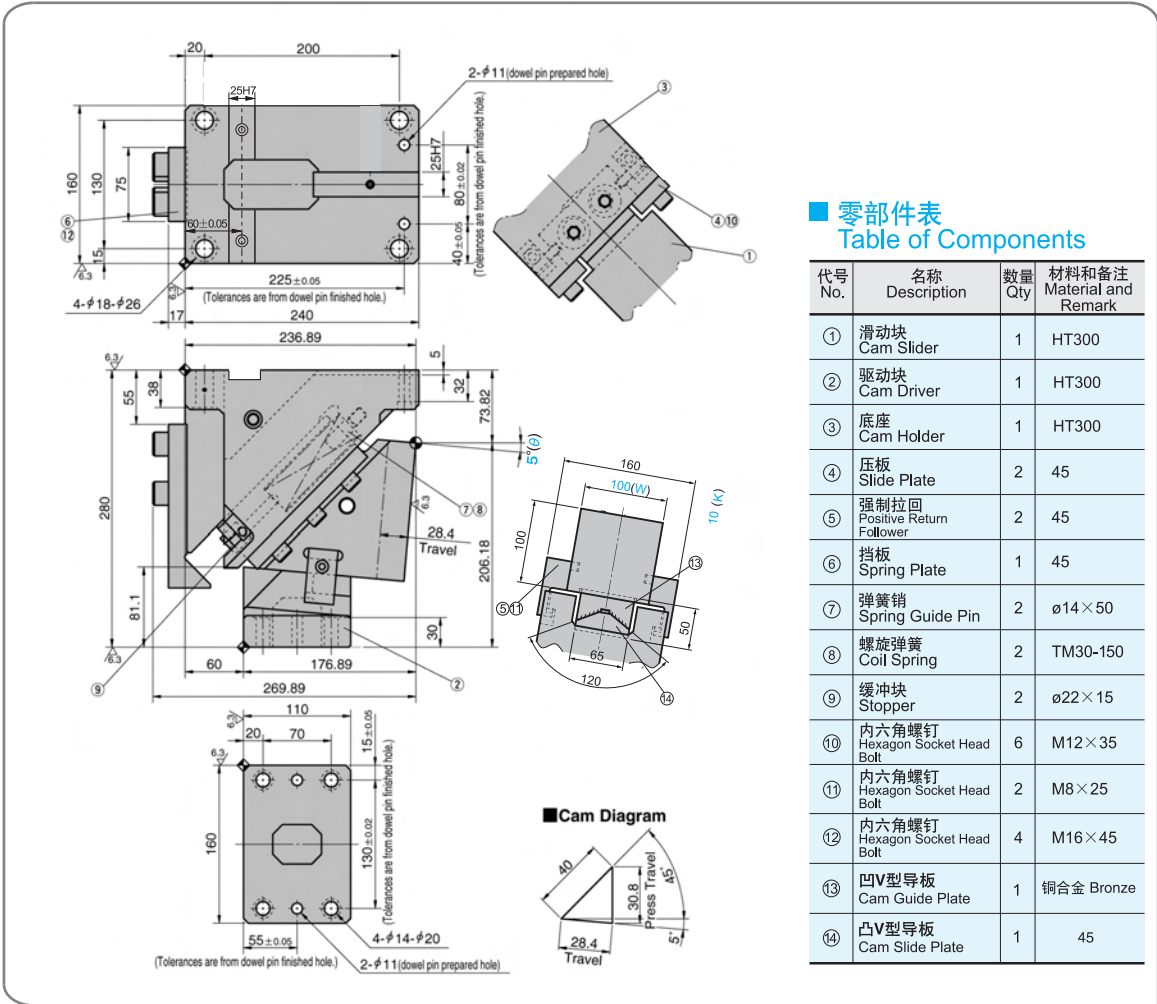
Order

Catalog No. **KEAF** (W) - (θ) - 销孔直径 Dowel Pin Hole Diameter **100 - 00**

## ■ 键详图 Key Specification



# KEAF100-10



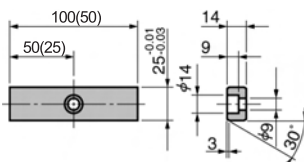
行程 Travel S	加工力 Working Force kN(tonf)		弹簧力 Spring Force N(kgf)		总重量 Total Weight kg	代号 Catalog No.	(W)	(θ)	销孔孔径选择 Selection of Dowel Pin Hole Diameter(H7)			SANKYO 代号对照 Catalog No.
	标准加工力 (100万回) Standard Working Force (one million strokes)	允许加工力 (30万回) Allowable Working Force (300,000 strokes)	初压 Initial Load	终压 Final Load					驱动块 Cam Driver	底座 Cam Holder	驱动块/底座 Cam Driver/ Cam Holder	
28.4	44.1 (4.5)	88.2 (9.0)	146.4 (14.9)	3074.4 (313.3)	47.8	KEAF	100	10	12-13			UCNBK



Order

Catalog No. **KEAF** (W) **100** - (θ) **10** - 销孔直径 Dowel Pin Hole Diameter

■ 键详图 Key Specification



KEAF 100

# KEAF100-20

2-φ11 (dowel pin prepared hole)  
25H7  
80±0.02  
40±0.05  
225±0.05 (Tolerances are from dowel pin finished hole.)  
4-φ18-φ26  
160  
130  
75  
15  
6.3  
18  
20  
200  
240

30±0.05  
6.3  
38  
115  
5  
32  
110  
170  
20(θ)  
7,8  
30.9  
Travel  
160  
100(W)  
100  
65  
120  
50  
5,11  
13

110  
130±0.02  
15±0.05 (Tolerances are from dowel pin finished hole.)  
55±0.05  
4-φ14-φ20  
2-φ11 (dowel pin prepared hole)  
6.3  
20  
70  
160

■ Cam Diagram  
32  
24.1  
25  
30.9  
Travel

### ■ 零部件表 Table of Components

代号 No.	名称 Description	数量 Qty	材料和备注 Material and Remark
①	滑动块 Cam Slider	1	HT300
②	驱动块 Cam Driver	1	HT300
③	底座 Cam Holder	1	HT300
④	压板 Slide Plate	2	45
⑤	强制拉回 Positive Return Follower	2	45
⑥	挡板 Spring Plate	1	45
⑦	弹簧销 Spring Guide Pin	2	φ14×50
⑧	螺旋弹簧 Coil Spring	2	TM30-125
⑨	缓冲块 Stopper	2	φ22×15
⑩	内六角螺钉 Hexagon Socket Head Bolt	6	M12×35
⑪	内六角螺钉 Hexagon Socket Head Bolt	2	M8×25
⑫	内六角螺钉 Hexagon Socket Head Bolt	4	M16×45
⑬	凹V型导板 Cam Guide Plate	1	铜合金 Bronze
⑭	凸V型导板 Cam Slide Plate	1	45

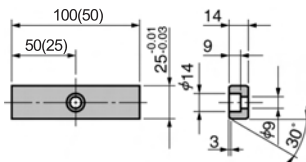
行程 Travel S	加工力 Working Force kN(tonf)		弹簧力 Spring Force N(kgf)		总重量 Total Weight kg	代号 Catalog No.	(W)	(θ)	销孔孔径选择 Selection of Dowel Pin Hole Diameter(H7)			SANKYO 代号对照 Catalog No.
	标准加工力 (100万回) Standard Working Force (one million strokes)	允许加工力 (30万回) Allowable Working Force (300,000 strokes)	初压 Initial Load	终压 Final Load					驱动块 Cam Driver	底座 Cam Holder	驱动块/底座 Cam Driver/ Cam Holder	
30.9	44.1 (4.5)	88.2 (9.0)	175.2 (17.9)	2978.4 (304.0)	44.8	KEAF	100	20	12-13			UCNBK



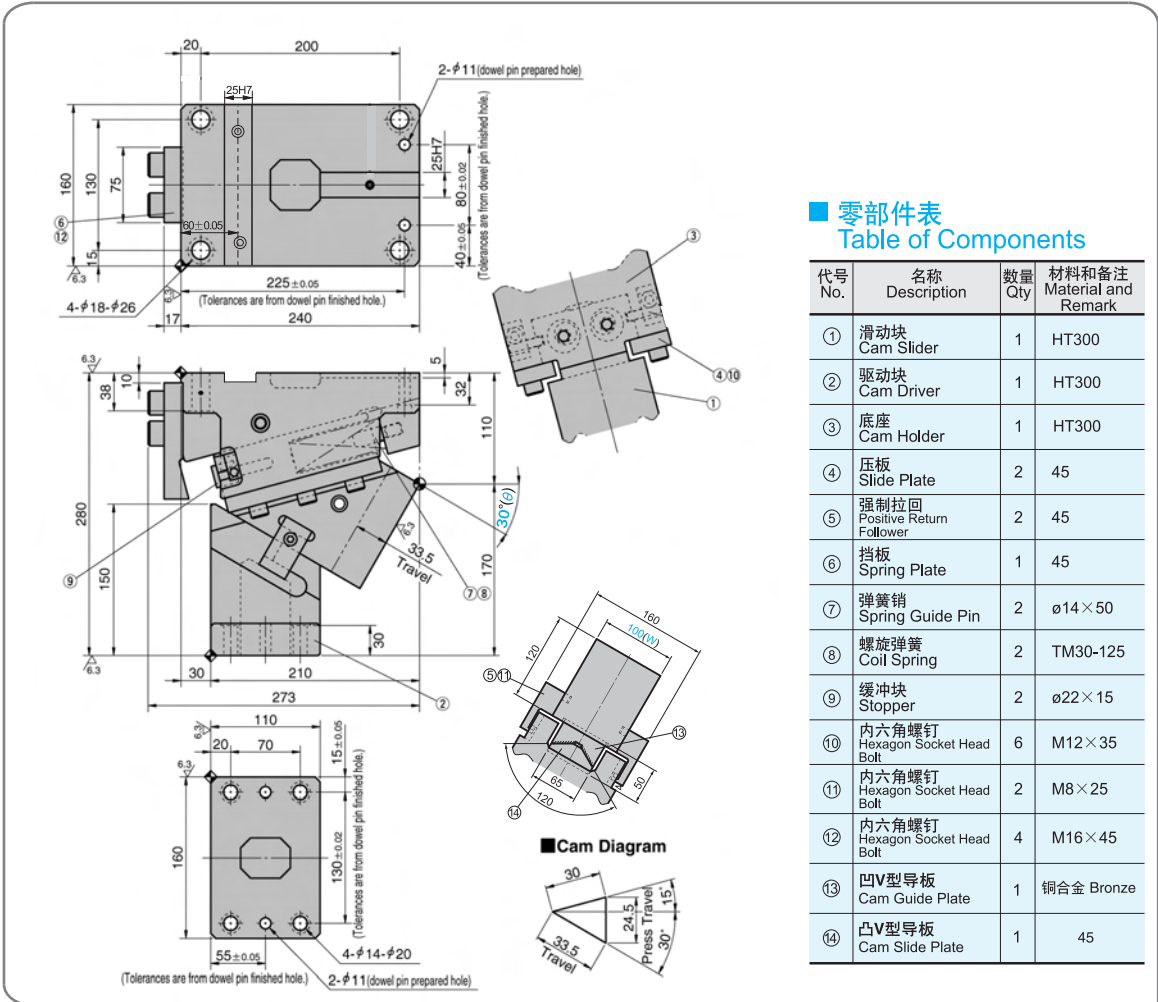
Order

Catalog No. **KEAF** (W) **100** - (θ) **20** - 销孔直径 Dowel Pin Hole Diameter

### ■ 键详图 Key Specification



# KEAF100-30



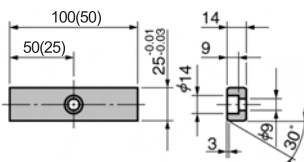
行程 Travel S	加工力 Working Force kN(tonf)		弹簧力 Spring Force N(kgf)		总重量 Total Weight kg	代号 Catalog No.	(W)	(θ)	销孔孔径选择 Selection of Dowel Pin Hole Diameter(H7)			SANKYO 代号对照 Catalog No.
	标准加工力 (100万回) Standard Working Force (one million strokes)	允许加工力 (30万回) Allowable Working Force (300,000 strokes)	初压 Initial Load	终压 Final Load					驱动块 Cam Driver	底座 Cam Holder	驱动块/底座 Cam Driver/ Cam Holder	
33.5	44.1 (4.5)	88.2 (9.0)	175.2 (17.9)	2978.4 (304.0)	44.1	KEAF	100	30	12-13			UCNBK



Order

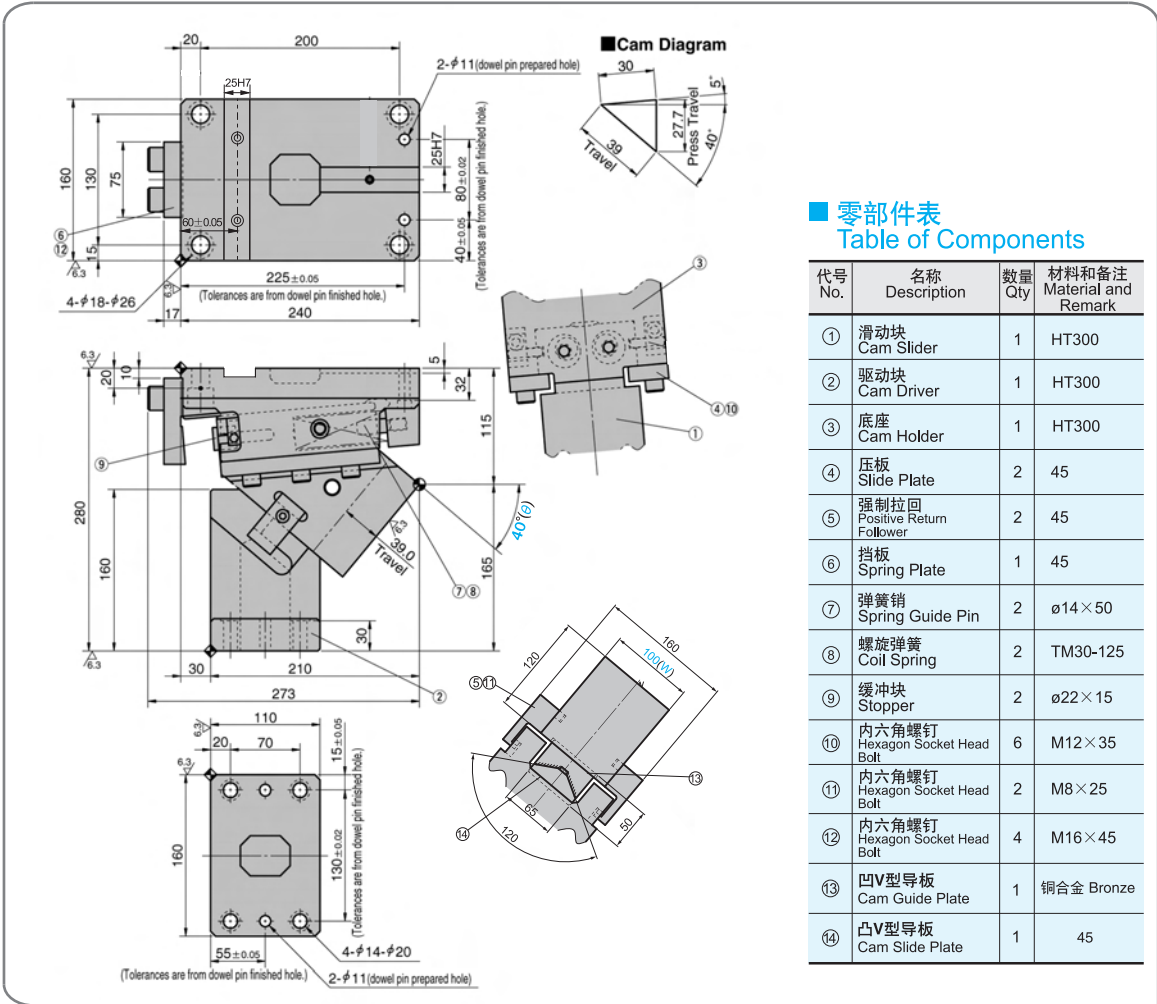
Catalog No. **KEAF** (W) **100** - (θ) **30** - 销孔直径  
Dowel Pin Hole Diameter

**■ 键详图 Key Specification**



KEAF  
100

# KEAF100-40



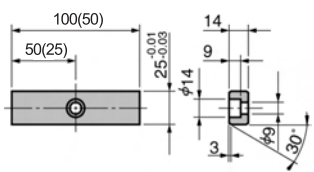
## 零部件表 Table of Components

代号 No.	名称 Description	数量 Qty	材料和备注 Material and Remark
①	滑动块 Cam Slider	1	HT300
②	驱动块 Cam Driver	1	HT300
③	底座 Cam Holder	1	HT300
④	压板 Slide Plate	2	45
⑤	强制拉回 Positive Return Follower	2	45
⑥	挡板 Spring Plate	1	45
⑦	弹簧销 Spring Guide Pin	2	φ14×50
⑧	螺旋弹簧 Coil Spring	2	TM30-125
⑨	缓冲块 Stopper	2	φ22×15
⑩	内六角螺钉 Hexagon Socket Head Bolt	6	M12×35
⑪	内六角螺钉 Hexagon Socket Head Bolt	2	M8×25
⑫	内六角螺钉 Hexagon Socket Head Bolt	4	M16×45
⑬	凹V型导板 Cam Guide Plate	1	铜合金 Bronze
⑭	凸V型导板 Cam Slide Plate	1	45

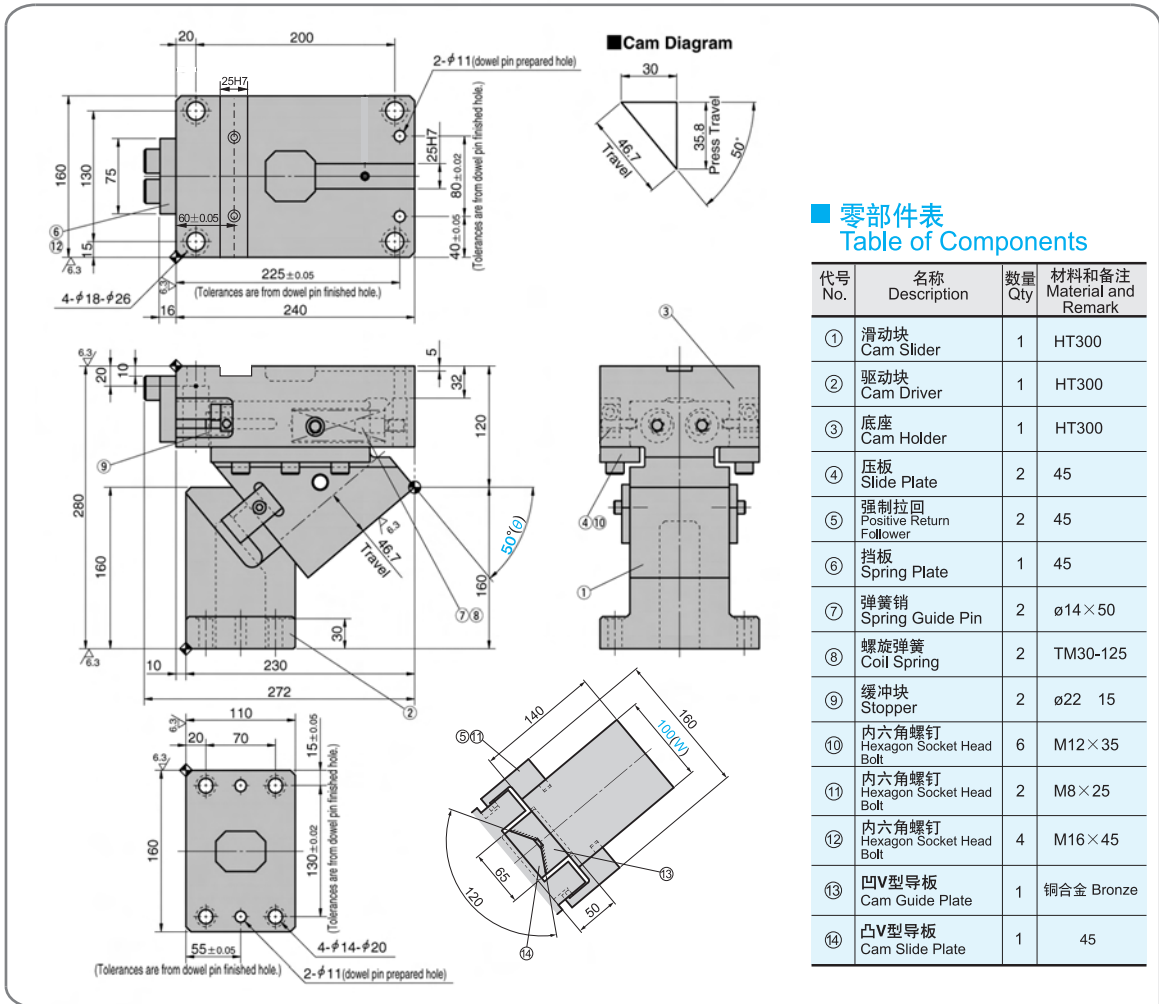
行程 Travel S	加工力 Working Force kN(tonf)		弹簧力 Spring Force N(kgf)		总重量 Total Weight kg	代号 Catalog No.	(W)	(θ)	销孔孔径选择 Selection of Dowel Pin Hole Diameter(H7)			SANKYO 代号对照 Catalog No.
	标准加工力 (100万回) Standard Working Force (one million strokes)	允许加工力 (30万回) Allowable Working Force (300,000 strokes)	初压 Initial Load	终压 Final Load					驱动块 Cam Driver	底座 Cam Holder	驱动块/底座 Cam Driver/ Cam Holder	
39.0	44.1 (4.5)	88.2 (9.0)	175.2 (17.9)	2803.2 (286.1)	40.8	KEAF	100	40	12-13			UCNBK

Order **Catalog No.** **KEAF** (W) **100** - (θ) **40** - 销孔直径  
Dowel Pin Hole Diameter

### 键详图 Key Specification



# KEAF100-50



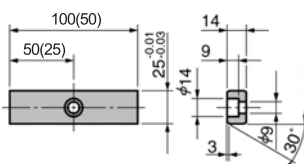
行程 Travel S	加工力 Working Force kN(tonf)		弹簧力 Spring Force N(kgf)		总重量 Total Weight kg	代号 Catalog No.	(W)	(θ)	销孔孔径选择 Selection of Dowel Pin Hole Diameter(H7)			SANKYO 代号对照 Catalog No.
	标准加工力 (100万回) Standard Working Force (one million strokes)	允许加工力 (30万回) Allowable Working Force (300,000 strokes)	初压 Initial Load	终压 Final Load					驱动块 Cam Driver	底座 Cam Holder	驱动块/底座 Cam Driver/Cam Holder	
46.7	49.0 (5.0)	98.0 (10.0)	175.2 (17.9)	2803.2 (286.1)	41.2	KEAF	100	50	12-13			UCNBK



Order

Catalog No. **KEAF** (W) **100** - (θ) **50** - 销孔直径 Dowel Pin Hole Diameter

■ 键详图 Key Specification



# KEAF100-60

**Cam Diagram**

**零部件表**  
Table of Components

代号 No.	名称 Description	数量 Qty	材料和备注 Material and Remark
①	滑动块 Cam Slider	1	HT300
②	驱动块 Cam Driver	1	HT300
③	底座 Cam Holder	1	HT300
④	压板 Slide Plate	2	45
⑤	强制拉回 Positive Return Follower	2	45
⑥	挡板 Spring Plate	1	45
⑦	弹簧销 Spring Guide Pin	2	φ14×50
⑧	螺旋弹簧 Coil Spring	2	TM30-125
⑨	缓冲块 Stopper	2	φ22×15
⑩	内六角螺钉 Hexagon Socket Head Bolt	6	M12×35
⑪	内六角螺钉 Hexagon Socket Head Bolt	2	M8×25
⑫	内六角螺钉 Hexagon Socket Head Bolt	4	M16×45
⑬	凹V型导板 Cam Guide Plate	1	铜合金 Bronze
⑭	凸V型导板 Cam Slide Plate	1	45

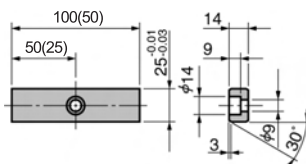
行程 Travel S	加工力 Working Force kN(tonf)		弹簧力 Spring Force N(kgf)		总重量 Total Weight kg	代号 Catalog No.	(W)	(θ)	销孔孔径选择 Selection of Dowel Pin Hole Diameter(H7)			SANKYO 代号对照 Catalog No.
	标准加工力 (100万回) Standard Working Force (one million strokes)	允许加工力 (30万回) Allowable Working Force (300,000 strokes)	初压 Initial Load	终压 Final Load					驱动块 Cam Driver	底座 Cam Holder	驱动块/底座 Cam Driver/ Cam Holder	
60.0	49.0 (5.0)	98.0 (10.0)	175.2 (17.9)	2803.2 (286.1)	42.5	KEAF	100	60	12-13			UCNBK



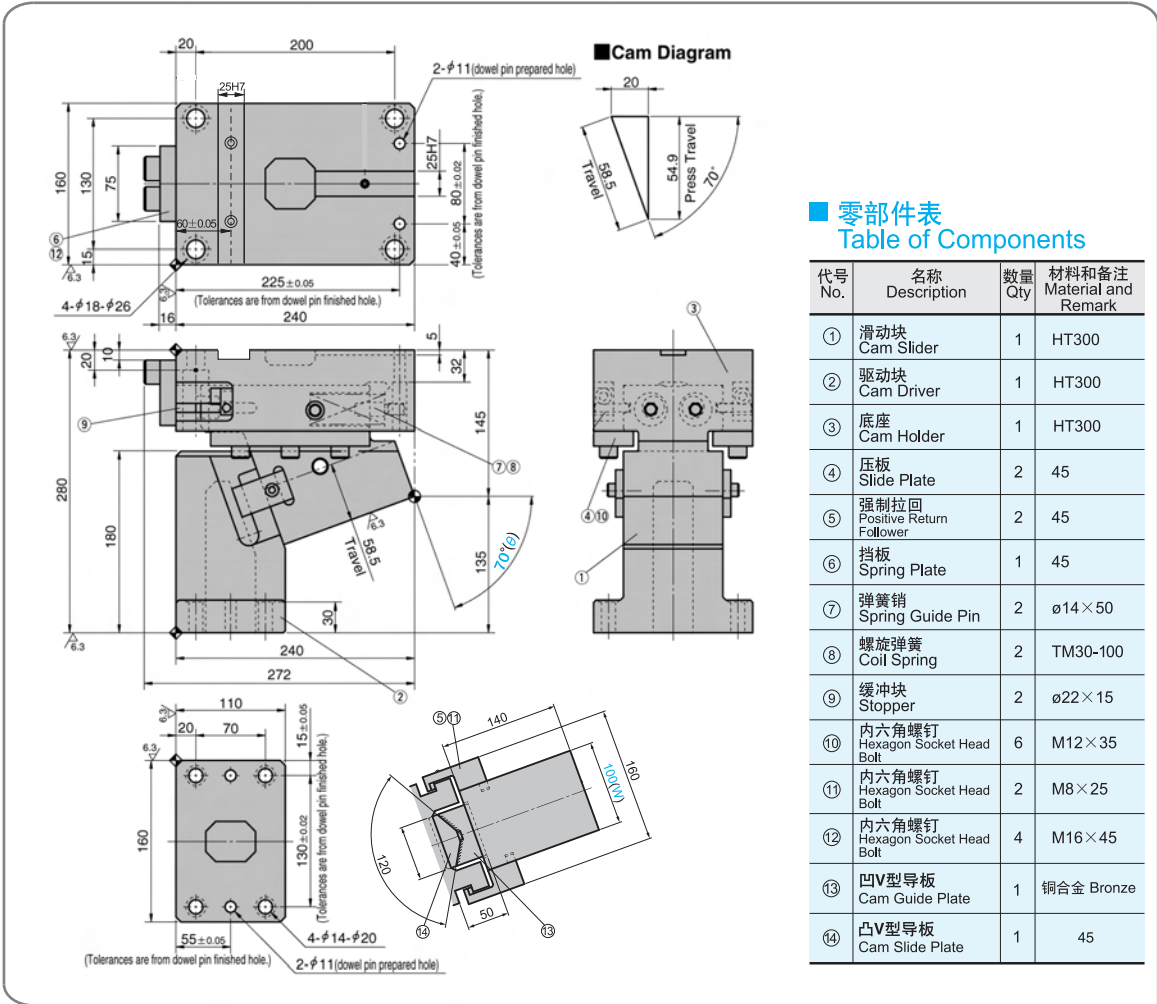
Order

Catalog No. **KEAF** (W) **100** - (θ) **60** - 销孔直径  
Dowel Pin Hole Diameter

**键详图 Key Specification**



# KEAF100-70



**零部件表**  
Table of Components

代号 No.	名称 Description	数量 Qty	材料和备注 Material and Remark
①	滑块 Cam Slider	1	HT300
②	驱动块 Cam Driver	1	HT300
③	底座 Cam Holder	1	HT300
④	压板 Slide Plate	2	45
⑤	强制拉回 Positive Return Follower	2	45
⑥	挡板 Spring Plate	1	45
⑦	弹簧销 Spring Guide Pin	2	φ14×50
⑧	螺旋弹簧 Coil Spring	2	TM30-100
⑨	缓冲块 Stopper	2	φ22×15
⑩	内六角螺钉 Hexagon Socket Head Bolt	6	M12×35
⑪	内六角螺钉 Hexagon Socket Head Bolt	2	M8×25
⑫	内六角螺钉 Hexagon Socket Head Bolt	4	M16×45
⑬	凹V型导板 Cam Guide Plate	1	铜合金 Bronze
⑭	凸V型导板 Cam Slide Plate	1	45

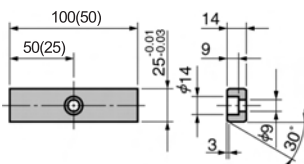
行程 Travel S	加工力 Working Force kN(tonf)		弹簧力 Spring Force N(kgf)		总重量 Total Weight kg	代号 Catalog No.	(W)	(θ)	销孔孔径选择 Selection of Dowel Pin Hole Diameter(H7)			SANKYO 代号对照 Catalog No.
	标准加工力 (100万回) Standard Working Force (one million strokes)	允许加工力 (30万回) Allowable Working Force (300,000 strokes)	初压 Initial Load	终压 Final Load					驱动块 Cam Driver	底座 Cam Holder	驱动块/底座 Cam Driver/ Cam Holder	
58.5	49.0 (5.0)	98.0 (10.0)	548.0 (55.9)	2740.0 (279.5)	41.8	KEAF	100	70	12-13			UCNBK



Order

Catalog No. **KEAF** (W) - (θ) - 销孔直径  
Dowel Pin Hole Diameter  
**100 - 70**

**键详图 Key Specification**



KEAF  
100



# KEAF200-00

**■ 零部件表 Table of Components**

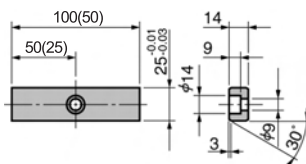
代号 No.	名称 Description	数量 Qty	材料和备注 Material and Remark
①	滑动块 Cam Slider	1	HT300
②	驱动块 Cam Driver	1	HT300
③	底座 Cam Holder	1	HT300
④	压板 Slide Plate	2	45
⑤	强制拉回 Positive Return Follower	2	45
⑥	挡板 Spring Plate	1	45
⑦	弹簧销 Spring Guide Pin	4	φ14×50
⑧	螺旋弹簧 Coil Spring	4	TM30-175
⑨	缓冲块 Stopper	4	φ22×15
⑩	内六角螺钉 Hexagon Socket Head Bolt	6	M12×35
⑪	内六角螺钉 Hexagon Socket Head Bolt	2	M8×25
⑫	内六角螺钉 Hexagon Socket Head Bolt	8	M16×45
⑬	凹V型导板 Cam Guide Plate	1	铜合金 Bronze
⑭	凸V型导板 Cam Slide Plate	1	45

**■ Cam Diagram**

行程 Travel S	加工力 Working Force kN(tonf)		弹簧力 Spring Force N(kgf)		滑块重量 Slider Weight kg	总重量 Total Weight kg	代号 Catalog No.	(W)	(θ)	销孔孔径选择 Selection of Dowel Pin Hole Diameter(H7)			SANKYO 代号对照 Catalog No.
	标准加工力 (100万回) Standard Working Force (one million strokes)	允许加工力 (30万回) Allowable Working Force (300,000 strokes)	初压 Initial Load	终压 Final Load						驱动块 Cam Driver	底座 Cam Holder	驱动块/底座 Cam Driver/ Cam Holder	
28.3	98.1 (10.0)	196.2 (20.0)	626.0 (63.8)	5634.0 (574.2)	25.7	81.5	KEAF	200	00	12-13-16			UCNBK

Order **Catalog No. KEAF** (W) - (θ) - 销孔直径 Dowel Pin Hole Diameter **200 - 00**

■ 键详图 Key Specification



# KEAF200-10

**■ 零部件表 Table of Components**

代号 No.	名称 Description	数量 Qty	材料和备注 Material and Remark
①	滑动块 Cam Slider	1	HT300
②	驱动块 Cam Driver	1	HT300
③	底座 Cam Holder	1	HT300
④	压板 Slide Plate	2	45
⑤	强制拉回 Positive Return Follower	2	45
⑥	挡板 Spring Plate	1	45
⑦	弹簧销 Spring Guide Pin	4	φ14×50
⑧	螺旋弹簧 Coil Spring	4	TM30-150
⑨	缓冲块 Stopper	4	φ22×15
⑩	内六角螺钉 Hexagon Socket Head Bolt	6	M12×35
⑪	内六角螺钉 Hexagon Socket Head Bolt	2	M8×25
⑫	内六角螺钉 Hexagon Socket Head Bolt	8	M16×45
⑬	凹V型导板 Cam Guide Plate	1	铜合金 Bronze
⑭	凸V型导板 Cam Slide Plate	1	45

**■ Cam Diagram**

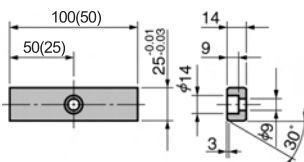
行程 Travel S	加工力 Working Force kN(tonf)		弹簧力 Spring Force N(kgf)		滑块重量 Slider Weight kg	总重量 Total Weight kg	代号 Catalog No.	(W)	(θ)	销孔孔径选择 Selection of Dowel Pin Hole Diameter(H7)			SANKYO 代号对照 Catalog No.
	标准加工力 (100万回) Standard Working Force (one million strokes)	允许加工力 (30万回) Allowable Working Force (300,000 strokes)	初压 Initial Load	终压 Final Load						驱动块 Cam Driver	底座 Cam Holder	驱动块/底座 Cam Driver/ Cam Holder	
33.3	98.1 (10.0)	196.2 (20.0)	292.8 (29.8)	6148.8 (626.6)	23.7	75.7	KEAF	200	10	12-13-16			UCNBK



Order

Catalog No. **KEAF** (W) - (θ) - 销孔直径 Dowel Pin Hole Diameter **200 - 10**

■ 键详图 Key Specification



KEAF 200

# KEAF200-20

**■ 零部件表 Table of Components**

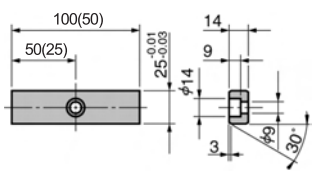
代号 No.	名称 Description	数量 Qty	材料和备注 Material and Remark
①	滑动块 Cam Slider	1	HT300
②	驱动块 Cam Driver	1	HT300
③	底座 Cam Holder	1	HT300
④	压板 Slide Plate	2	45
⑤	强制拉回 Positive Return Follower	2	45
⑥	挡板 Spring Plate	1	45
⑦	弹簧销 Spring Guide Pin	4	φ14×50
⑧	螺旋弹簧 Coil Spring	4	TM30-150
⑨	缓冲块 Stopper	4	φ22×15
⑩	内六角螺钉 Hexagon Socket Head Bolt	6	M12×35
⑪	内六角螺钉 Hexagon Socket Head Bolt	2	M8×25
⑫	内六角螺钉 Hexagon Socket Head Bolt	8	M16×45
⑬	凹V型导板 Cam Guide Plate	1	铜合金 Bronze
⑭	凸V型导板 Cam Slide Plate	1	45

**■ Cam Diagram**

行程 Travel S	加工力 Working Force kN(tonf)		弹簧力 Spring Force N(kgf)		滑块重量 Slider Weight kg	总重量 Total Weight kg	代号 Catalog No.	(W)	(θ)	销孔孔径选择 Selection of Dowel Pin Hole Diameter(H7)			SANKYO 代号对照 Catalog No.
	标准加工力 (100万回) Standard Working Force (one million strokes)	允许加工力 (30万回) Allowable Working Force (300,000 strokes)	初压 Initial Load	终压 Final Load						驱动块 Cam Driver	底座 Cam Holder	驱动块/底座 Cam Driver/ Cam Holder	
30.9	98.1 (10.0)	196.2 (20.0)	350.4 (35.8)	5956.8 (607.9)	24.5	46.1	KEAF	200	20	12-13-16			UCNBK

Order **Catalog No. KEAF** (W) - (θ) - 销孔直径 Dowel Pin Hole Diameter **200 - 20**

■ 键详图 Key Specification



# KEAF200-30

**零部件表**  
Table of Components

代号 No.	名称 Description	数量 Qty	材料和备注 Material and Remark
①	滑动块 Cam Slider	1	HT300
②	驱动块 Cam Driver	1	HT300
③	底座 Cam Holder	1	HT300
④	压板 Slide Plate	2	45
⑤	强制拉回 Positive Return Follower	2	45
⑥	挡板 Spring Plate	1	45
⑦	弹簧销 Spring Guide Pin	4	φ14×50
⑧	螺旋弹簧 Coil Spring	4	TM30-125
⑨	缓冲块 Stopper	4	φ22×15
⑩	内六角螺钉 Hexagon Socket Head Bolt	6	M12×35
⑪	内六角螺钉 Hexagon Socket Head Bolt	2	M8×25
⑫	内六角螺钉 Hexagon Socket Head Bolt	8	M16×45
⑬	凹V型导板 Cam Guide Plate	1	铜合金 Bronze
⑭	凸V型导板 Cam Slide Plate	1	45

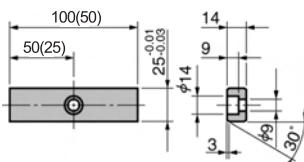
行程 Travel S	加工力 Working Force kN(tonf)		弹簧力 Spring Force N(kgf)		滑块重量 Slider Weight kg	总重量 Total Weight kg	代号 Catalog No.	(W)	(θ)	销孔孔径选择 Selection of Dowel Pin Hole Diameter(H7)			SANKYO 代号对照 Catalog No.
	标准加工力 (100万回) Standard Working Force (one million strokes)	允许加工力 (30万回) Allowable Working Force (300,000 strokes)	初压 Initial Load	终压 Final Load						驱动块 Cam Driver	底座 Cam Holder	驱动块/底座 Cam Driver/ Cam Holder	
33.5	98.1 (10.0)	196.2 (20.0)	350.4 (35.8)	5606.4 (572.2)	28.1	77.0	KEAF	200	30	12-13-16			UCNBK



Order

Catalog No. **KEAF** (W) - (θ) - 销孔直径  
**200 - 30** Dowel Pin Hole Diameter

■ 键详图 Key Specification



KEAF  
200

# KEAF200-40

**Cam Diagram**

30  
5  
39  
27.7  
40°  
Travel  
Press Travel

① 滑动块  
Cam Slider

② 驱动块  
Cam Driver

③ 底座  
Cam Holder

④ 压板  
Slide Plate

⑤ 强制拉回  
Positive Return Follower

⑥ 挡板  
Spring Plate

⑦ 弹簧销  
Spring Guide Pin

⑧ 螺旋弹簧  
Coil Spring

⑨ 缓冲块  
Stopper

⑩ 内六角螺钉  
Hexagon Socket Head Bolt

⑪ 内六角螺钉  
Hexagon Socket Head Bolt

⑫ 内六角螺钉  
Hexagon Socket Head Bolt

⑬ 凹V型导板  
Cam Guide Plate

⑭ 凸V型导板  
Cam Slide Plate

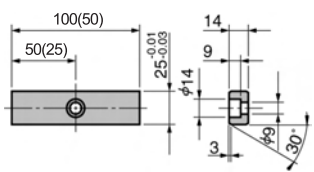
## 零部件表 Table of Components

代号 No.	名称 Description	数量 Qty	材料和备注 Material and Remark
①	滑动块 Cam Slider	1	HT300
②	驱动块 Cam Driver	1	HT300
③	底座 Cam Holder	1	HT300
④	压板 Slide Plate	2	45
⑤	强制拉回 Positive Return Follower	2	45
⑥	挡板 Spring Plate	1	45
⑦	弹簧销 Spring Guide Pin	4	φ14×50
⑧	螺旋弹簧 Coil Spring	4	TM30-125
⑨	缓冲块 Stopper	4	φ22×15
⑩	内六角螺钉 Hexagon Socket Head Bolt	6	M12×35
⑪	内六角螺钉 Hexagon Socket Head Bolt	2	M8×25
⑫	内六角螺钉 Hexagon Socket Head Bolt	8	M16×45
⑬	凹V型导板 Cam Guide Plate	1	铜合金 Bronze
⑭	凸V型导板 Cam Slide Plate	1	45

行程 Travel S	加工力 Working Force kN(tonf)		弹簧力 Spring Force N(kgf)		滑块重量 Slider Weight kg	总重量 Total Weight kg	代号 Catalog No.	(W)	(θ)	销孔孔径选择 Selection of Dowel Pin Hole Diameter(H7)			SANKYO 代号对照 Catalog No.
	标准加工力 (100万回) Standard Working Force (one million strokes)	允许加工力 (30万回) Allowable Working Force (300,000 strokes)	初压 Initial Load	终压 Final Load						驱动块 Cam Driver	底座 Cam Holder	驱动块/底座 Cam Driver/ Cam Holder	
39.0	98.1 (10.0)	196.2 (20.0)	350.4 (35.8)	5606.4 (572.2)	28.8	71.4	KEAF	200	40	12-13-16			UCNBK

Order **Catalog No.** **KEAF** (W) - (θ) - 销孔直径  
200 - 40 Dowel Pin Hole Diameter

### 键详图 Key Specification



# KEAF200-50

**Cam Diagram**

30  
46.7 Travel  
35.8 Press Travel  
50°

**Table of Components**

代号 No.	名称 Description	数量 Qty	材料和备注 Material and Remark
①	滑动块 Cam Slider	1	HT300
②	驱动块 Cam Driver	1	HT300
③	底座 Cam Holder	1	HT300
④	压板 Slide Plate	2	45
⑤	强制拉回 Positive Return Follower	2	45
⑥	挡板 Spring Plate	1	45
⑦	弹簧销 Spring Guide Pin	4	φ14×50
⑧	螺旋弹簧 Coil Spring	4	TM30-125
⑨	缓冲块 Stopper	4	φ22×15
⑩	内六角螺钉 Hexagon Socket Head Bolt	6	M12×35
⑪	内六角螺钉 Hexagon Socket Head Bolt	2	M8×25
⑫	内六角螺钉 Hexagon Socket Head Bolt	8	M16×45
⑬	凹V型导板 Cam Guide Plate	1	铜合金 Bronze
⑭	凸V型导板 Cam Slide Plate	1	45

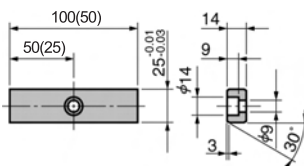
行程 Travel S	加工力 Working Force kN(tonf)		弹簧力 Spring Force N(kgf)		滑块重量 Slider Weight kg	总重量 Total Weight kg	代号 Catalog No.	(W)	(θ)	销孔孔径选择 Selection of Dowel Pin Hole Diameter(H7)			SANKYO 代号对照 Catalog No.
	标准加工力 (100万回) Standard Working Force (one million strokes)	允许加工力 (30万回) Allowable Working Force (300,000 strokes)	初压 Initial Load	终压 Final Load						驱动块 Cam Driver	底座 Cam Holder	驱动块/底座 Cam Driver/ Cam Holder	
46.7	117.7 (12.0)	235.4 (24.0)	350.4 (35.8)	5606.4 (572.2)	31.0	71.6	KEAF	200	50	12-13-16			UCNBK



Order

Catalog No. **KEAF** (W) **200** - (θ) **50** - 销孔直径 Dowel Pin Hole Diameter

■ 键详图 Key Specification



KEAF  
200

# KEAF200-60

**Cam Diagram**

Travel: 60  
Press Travel: 52  
60°

**零部件表 Table of Components**

代号 No.	名称 Description	数量 Qty	材料和备注 Material and Remark
①	滑动块 Cam Slider	1	HT300
②	驱动块 Cam Driver	1	HT300
③	底座 Cam Holder	1	HT300
④	压板 Slide Plate	2	45
⑤	强制拉回 Positive Return Follower	2	45
⑥	挡板 Spring Plate	1	45
⑦	弹簧销 Spring Guide Pin	4	φ14×50
⑧	螺旋弹簧 Coil Spring	4	TM30-125
⑨	缓冲块 Stopper	4	φ22×15
⑩	内六角螺钉 Hexagon Socket Head Bolt	6	M12×35
⑪	内六角螺钉 Hexagon Socket Head Bolt	2	M8×25
⑫	内六角螺钉 Hexagon Socket Head Bolt	8	M16×45
⑬	凹V型导板 Cam Guide Plate	1	铜合金 Bronze
⑭	凸V型导板 Cam Slide Plate	1	45

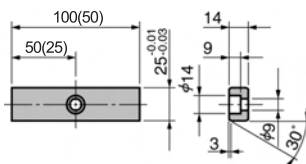
行程 Travel S	加工力 Working Force kN(tonf)		弹簧力 Spring Force N(kgf)		滑块重量 Slider Weight kg	总重量 Total Weight kg	代号 Catalog No.	(W)	(θ)	销孔孔径选择 Selection of Dowel Pin Hole Diameter(H7)			SANKYO 代号对照 Catalog No.
	标准加工力 (100万回) Standard Working Force (one million strokes)	允许加工力 (30万回) Allowable Working Force (300,000 strokes)	初压 Initial Load	终压 Final Load						驱动块 Cam Driver	底座 Cam Holder	驱动块/底座 Cam Driver/ Cam Holder	
60.0	117.7 (12.0)	235.4 (24.0)	350.4 (35.8)	5606.4 (572.2)	32.1	73.9	KEAF	200	60	12-13-16			UCNBK



Order

Catalog No. **KEAF** (W) - (θ) - 销孔直径 Dowel Pin Hole Diameter **200 - 60**

■ 键详图 Key Specification



# KEAF200-70

**Cam Diagram**

20  
100  
5  
54.9  
70°  
Press Travel

**零部件表  
Table of Components**

代号 No.	名称 Description	数量 Qty	材料和备注 Material and Remark
①	滑动块 Cam Slider	1	HT300
②	驱动块 Cam Driver	1	HT300
③	底座 Cam Holder	1	HT300
④	压板 Slide Plate	2	45
⑤	强制拉回 Positive Return Follower	2	45
⑥	挡板 Spring Plate	1	45
⑦	弹簧销 Spring Guide Pin	4	φ14×50
⑧	螺旋弹簧 Coil Spring	4	TM30-100
⑨	缓冲块 Stopper	4	φ22×15
⑩	内六角螺钉 Hexagon Socket Head Bolt	6	M12×35
⑪	内六角螺钉 Hexagon Socket Head Bolt	2	M8×25
⑫	内六角螺钉 Hexagon Socket Head Bolt	8	M16×45
⑬	凹V型导板 Cam Guide Plate	1	铜合金 Bronze
⑭	凸V型导板 Cam Slide Plate	1	45

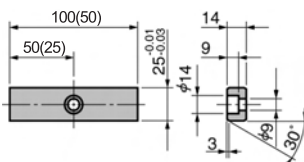
行程 Travel S	加工力 Working Force kN(tonf)		弹簧力 Spring Force N(kgf)		滑块重量 Slider Weight kg	总重量 Total Weight kg	代号 Catalog No.	(W)	(θ)	销孔孔径选择 Selection of Dowel Pin Hole Diameter(H7)			SANKYO 代号对照 Catalog No.
	标准加工力 (100万回) Standard Working Force (one million strokes)	允许加工力 (30万回) Allowable Working Force (300,000 strokes)	初压 Initial Load	终压 Final Load						驱动块 Cam Driver	底座 Cam Holder	驱动块/底座 Cam Driver/ Cam Holder	
58.5	117.7 (12.0)	235.4 (24.0)	1096.0 (111.8)	5480.0 (559.0)	28.8	72.2	KEAF	200	70	12-13-16			UCNBK



Order

Catalog No. **KEAF** (W) - (θ) - 销孔直径  
200 - 70 Dowel Pin Hole Diameter

■ 键详图 Key Specification



KEAF  
200