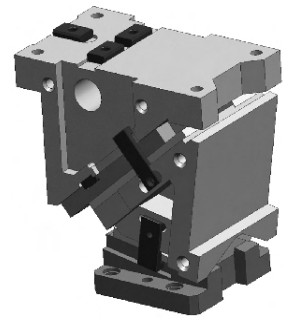
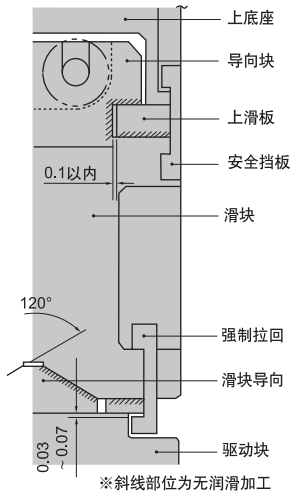


KMAC概要

- 安装面宽度200、300、400、500、600。
- V型导向的自动调芯机构。
- 滑块为后方拔出式样容易调整。
- 不卸下滑块即可从后方拔出弹簧，容易调整下死点。
- 角度为 $0^{\circ} \sim 60^{\circ}$ ，($0^{\circ} \sim 20^{\circ}$ 为 5° 间隙)。



■ 滑块结构及强制拉回结构



- 上底座(上压板)和滑块(导向块)的间隙单侧在0.1以内，因此装配、调整容易。
- 滑块(强制拉回)和驱动的间隙为0.03~0.07,因此便于装配、调整。
- 请在滑块和驱动组装后对刃口。

■ 下死点锁紧

即使不取下滑块，只要卸下弹簧导板 $26/27$ 就能拔出弹簧，因此便于下死点锁紧、调整等。

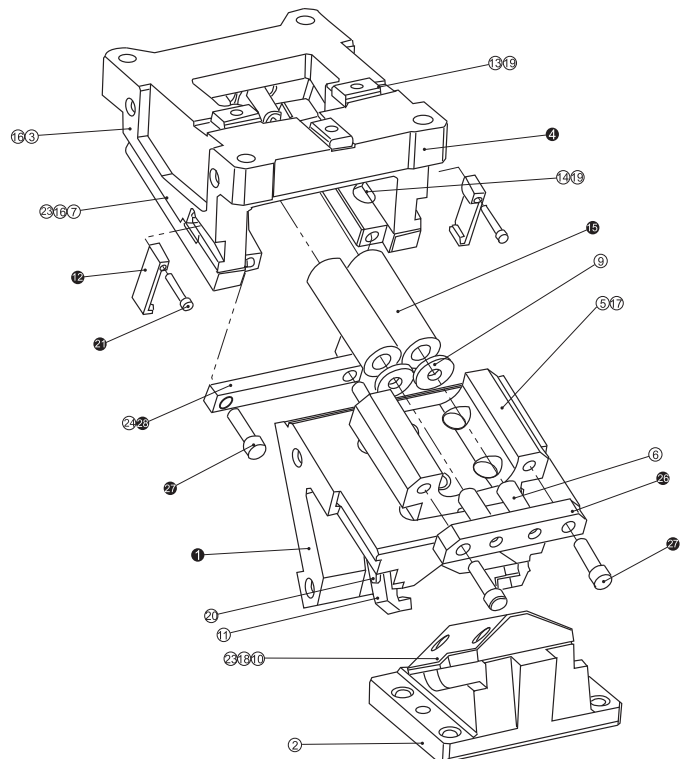
■ KMAC的分解及装配

● KMAC的分解方法

- 1、松开 21 卸下 12 。
- 2、松开 27 卸下 23 。
- 3、将 1 从 4 上向后方拔出

● KMAC的装配方法

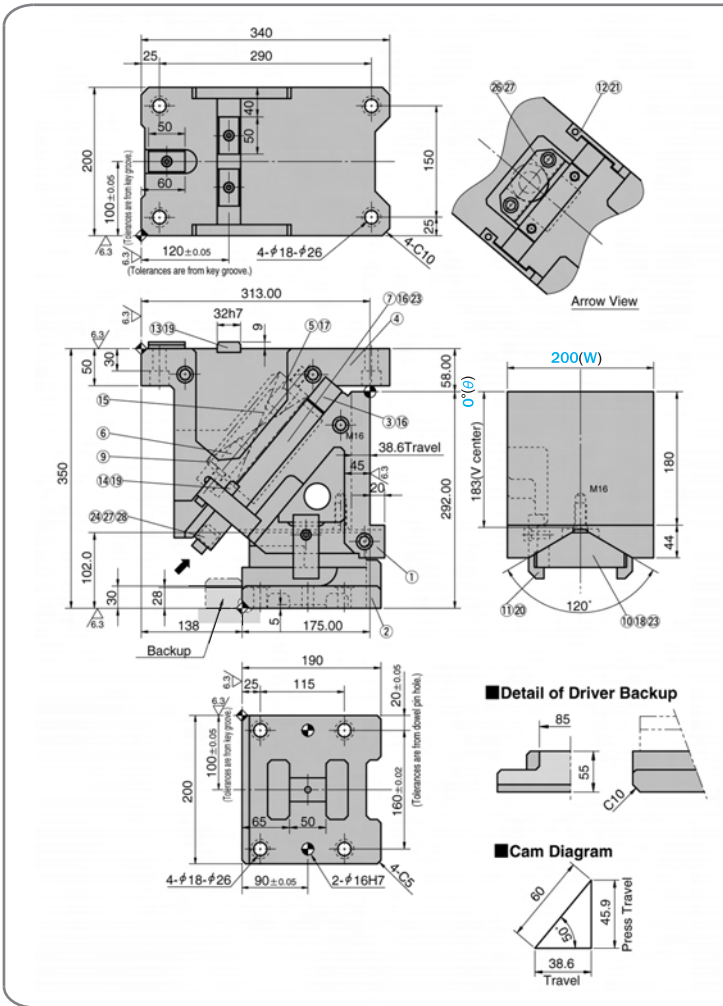
- 1)按与拆解相反的顺序装配。
 - ◆ 充分确认滑动部位是否无异物后涂上润滑脂并进行装配。
 - ◆ 由于对滑块和上底座的间隙进行管理因此要确认刻印的序号后进行装配。
 - ◆ 拆解、装配后，要充分注意不要忘记紧固螺栓。



KMAC200-00

■ 零部件表 Table of Components

代号 No.	名称 Description	数量 Qty	材料和备注 Material and Remark
①	滑动块 Cam Slider	1	HT300
②	驱动块 Cam Driver	1	HT300
③	上滑板B Base Plate B	1	铜合金 Bronze
④	底座 Cam Holder	1	HT300
⑤	弹簧滑座 Spring Guide Block	1	QT450
⑥	弹簧销 Spring Guide Pin	1	45
⑦	上滑板A Base Plate A	R/L1	铜合金 Bronze
⑩	凸V型 Cam Slide Guide	1	铜合金 Bronze
⑪	强制拉回 Positive Return Follower	2	45
⑫	安全挡板 Safety Plate	2	45
⑬	键A Key A	3	45
⑭	键B Key B	2	45
⑮	螺旋弹簧 Coil Spring	1	TM50-225
⑯	内六角螺钉 Hexagon Socket Head Bolt	6	M16×45
⑰	内六角螺钉 Hexagon Socket Head Bolt	2	M20×50
⑱	内六角螺钉 Hexagon Socket Head Bolt	4	M12×35
⑲	内六角螺钉 Hexagon Socket Head Bolt	5	M8×15
⑳	内六角螺钉 Hexagon Socket Head Bolt	2	M10×25
㉑	内六角螺钉 Hexagon Socket Head Bolt	2	M8×45
㉒	内六角螺钉 Hexagon Socket Head Bolt	2	M8×45
㉓	内螺纹圆柱销 Dowel Pin With Female Thread	6	φ13×40
㉔	缓冲块 Stopper	1	φ22×15
㉖	弹簧挡板 Spring Guide Plate	1	45
㉗	内六角螺钉 Hexagon Socket Head Bolt	4	M12×40
㉘	挡板 Spring Plate	1	45



行程 Travel S	加工力 Working Force kN(tonf)		弹簧力 Spring Force N(kgF)		滑块重量 Slider Weight kg	总重量 Total Weight kg	代号 Catalog No.	(W)	(θ)	SANKYO 代号对照 Catalog No.
	标准加工力 (100万回) Standard Working Force (one million strokes)	允许加工力 (30万回) Allowable Working Force (300,000 strokes)	初压 Initial Load	终压 Final Load						
38.6	117.6 (12.0)	235.4 (24.0)	817.2 (83.3)	4903.2 (499.7)	36.1	95.0	KMAC	200	00	SUWB



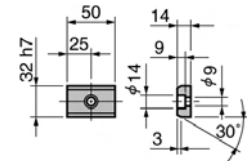
Order

Catalog No. **KMAC** (W) - (θ) **200 - 00**

■ 键详图 Key Specification



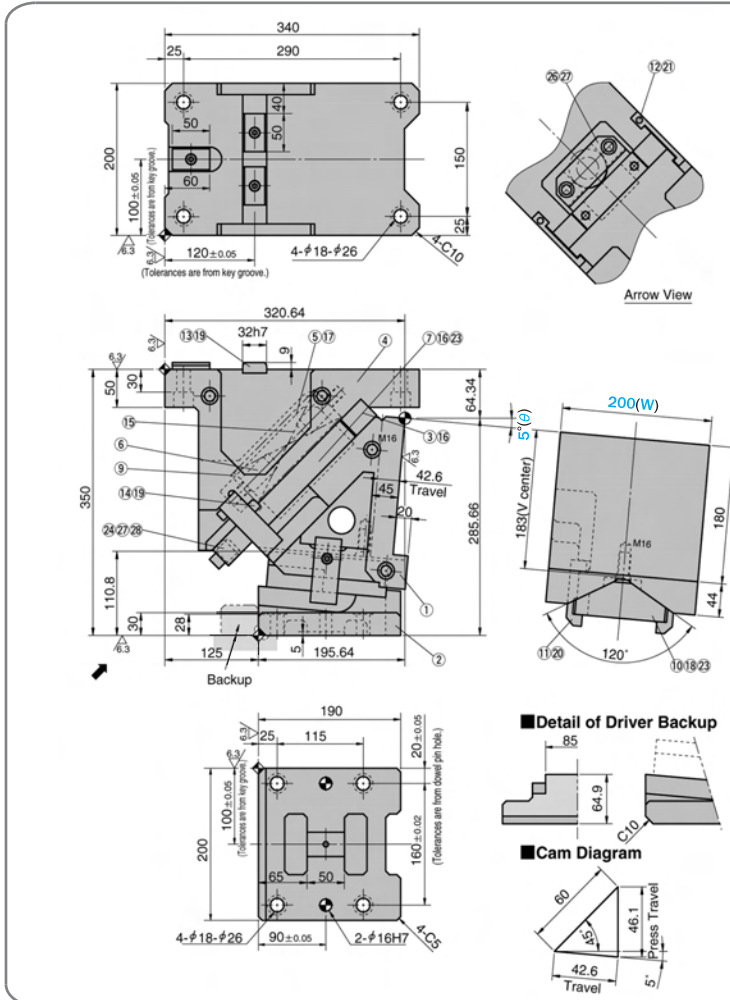
Option



KMAC200-05

■ 零部件表 Table of Components

代号 No.	名称 Description	数量 Qty	材料和备注 Material and Remark
①	滑动块 Cam Slider	1	HT300
②	驱动块 Cam Driver	1	HT300
③	上滑板B Base Plate B	1	铜合金 Bronze
④	底座 Cam Holder	1	HT300
⑤	弹簧滑座 Spring Guide Block	1	QT450
⑥	弹簧销 Spring Guide Pin	1	45
⑦	上滑板A Base Plate A	R/L1	铜合金 Bronze
⑩	凸V型 Cam Slide Guide	1	铜合金 Bronze
⑪	强制拉回 Positive Return Follower	2	45
⑫	安全挡板 Safety Plate	2	45
⑬	键A Key A	3	45
⑭	键B Key B	2	45
⑮	螺旋弹簧 Coil Spring	1	TM50-225
⑯	内六角螺钉 Hexagon Socket Head Bolt	6	M16×45
⑰	内六角螺钉 Hexagon Socket Head Bolt	2	M20×50
⑱	内六角螺钉 Hexagon Socket Head Bolt	4	M12×35
⑲	内六角螺钉 Hexagon Socket Head Bolt	5	M8×15
⑳	内六角螺钉 Hexagon Socket Head Bolt	2	M10×25
㉑	内六角螺钉 Hexagon Socket Head Bolt	2	M8×45
㉒	内六角螺钉 Hexagon Socket Head Bolt	4	M12×40
㉓	内螺纹圆柱销 Dowel Pin With Female Thread	6	φ13×40
㉔	缓冲块 Stopper	1	φ22×15
㉖	弹簧挡板 Spring Guide Plate	1	45
㉗	内六角螺钉 Hexagon Socket Head Bolt	4	M12×40
㉘	挡板 Spring Plate	1	45



行程 Travel S	加工力 Working Force kN(tonf)		弹簧力 Spring Force N(kgpf)		滑块重量 Slider Weight kg	总重量 Total Weight kg	代号 Catalog No.	(W)	(θ)	SANKYO 代号对照 Catalog No.
	标准加工力 (100万回) Standard Working Force (one million strokes)	允许加工力 (30万回) Allowable Working Force (300,000 strokes)	初压 Initial Load	终压 Final Load						
42.6	117.6 (12.0)	235.2 (24.0)	817.2 (83.3)	4903.2 (499.7)	36.1	94.8	KMAC	200	05	SUWB



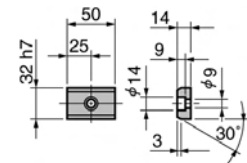
Order

Catalog No. **KMAC** (W) - (θ) **200 - 05**



Option

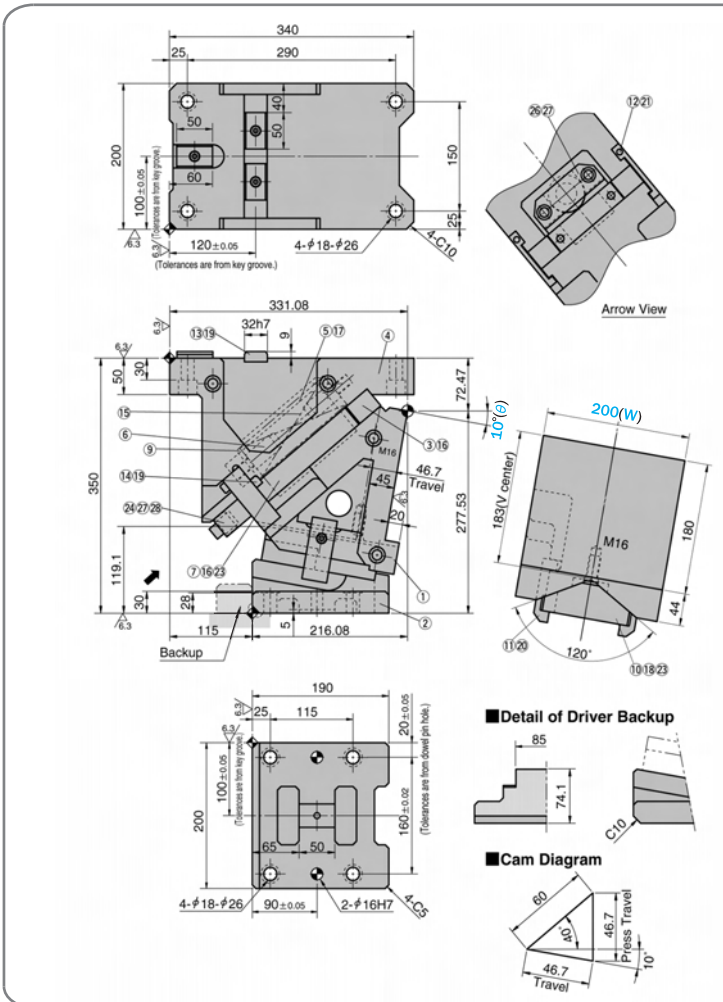
■ 键详图 Key Specification



KMAC200-10

■ 零部件表 Table of Components

代号 No.	名称 Description	数量 Qty	材料和备注 Material and Remark
①	滑动块 Cam Slider	1	HT300
②	驱动块 Cam Driver	1	HT300
③	上滑板B Base Plate B	1	铜合金 Bronze
④	底座 Cam Holder	1	HT300
⑤	弹簧滑座 Spring Guide Block	1	QT450
⑥	弹簧销 Spring Guide Pin	1	45
⑦	上滑板A Base Plate A	R/L1	铜合金 Bronze
⑩	凸V型 Cam Slide Guide	1	铜合金 Bronze
⑪	强制拉回 Positive Return Follower	2	45
⑫	安全挡板 Safety Plate	2	45
⑬	键A Key A	3	45
⑭	键B Key B	2	45
⑮	螺旋弹簧 Coil Spring	1	TM50-225
⑯	内六角螺钉 Hexagon Socket Head Bolt	6	M16×45
⑰	内六角螺钉 Hexagon Socket Head Bolt	2	M20×50
⑱	内六角螺钉 Hexagon Socket Head Bolt	4	M12×35
⑲	内六角螺钉 Hexagon Socket Head Bolt	5	M8×15
⑳	内六角螺钉 Hexagon Socket Head Bolt	2	M10×25
㉑	内六角螺钉 Hexagon Socket Head Bolt	2	M8×45
㉒	内六角螺钉 Hexagon Socket Head Bolt	4	M12×40
㉓	内螺纹圆柱销 Dowel Pin With Female Thread	6	φ13×40
㉔	缓冲块 Stopper	1	φ22×15
㉖	弹簧挡板 Spring Guide Plate	1	45
㉗	内六角螺钉 Hexagon Socket Head Bolt	4	M12×40
㉘	挡板 Spring Plate	1	45



行程 Travel S	加工力 Working Force kN(tonf)		弹簧力 Spring Force N(kgpf)		滑块重量 Slider Weight kg	总重量 Total Weight kg	代号 Catalog No.	(W)	(θ)	SANKYO 代号对照 Catalog No.
	标准加工力 (100万回) Standard Working Force (one million strokes)	允许加工力 (30万回) Allowable Working Force (300,000 strokes)	初压 Initial Load	终压 Final Load						
46.7	117.6 (12.0)	235.2 (24.0)	817.2 (83.3)	4903.2 (499.7)	36.1	94.6	KMAC	200	10	SUWB



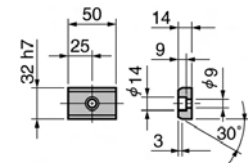
Order

Catalog No. (W) - (θ)
KMAC 200 - 10

■ 键详图 Key Specification



Option



KMAC
200

KMAC200-15

Cam Diagram

Detail of Driver Backup

■ 零部件表
Table of Components

代号 No.	名称 Description	数量 Qty	材料和备注 Material and Remark
①	滑动块 Cam Slider	1	HT300
②	驱动块 Cam Driver	1	HT300
③	上滑板B Base Plate B	1	铜合金 Bronze
④	底座 Cam Holder	1	HT300
⑤	弹簧滑座 Spring Guide Block	1	QT450
⑥	弹簧销 Spring Guide Pin	1	45
⑦	上滑板A Base Plate A	R/L1	铜合金 Bronze
⑩	凸V型 Cam Slide Guide	1	铜合金 Bronze
⑪	强制拉回 Positive Return Follower	2	45
⑫	安全挡板 Safety Plate	2	45
⑬	键A Key A	3	45
⑭	键B Key B	2	45
⑮	螺旋弹簧 Coil Spring	1	TM50-225
⑯	内六角螺钉 Hexagon Socket Head Bolt	6	M16×45
⑰	内六角螺钉 Hexagon Socket Head Bolt	2	M20×50
⑱	内六角螺钉 Hexagon Socket Head Bolt	4	M12×35
⑲	内六角螺钉 Hexagon Socket Head Bolt	5	M8×15
⑳	内六角螺钉 Hexagon Socket Head Bolt	2	M10×25
㉑	内六角螺钉 Hexagon Socket Head Bolt	2	M8×45
㉒	内六角螺钉 Hexagon Socket Head Bolt	4	M12×40
㉓	内螺纹圆柱销 Dowel Pin With Female Thread	6	φ13×40
㉔	缓冲块 Stopper	1	φ22×15
㉕	弹簧挡板 Spring Guide Plate	1	45
㉖	内六角螺钉 Hexagon Socket Head Bolt	4	M12×40
㉗	挡板 Spring Plate	1	45

行程 Travel S	加工力 Working Force kN(tonf)		弹簧力 Spring Force N(kgpf)		滑块重量 Slider Weight kg	总重量 Total Weight kg	代号 Catalog No.	(W)	(θ)	SANKYO 代号对照 Catalog No.
	标准加工力 (100万回) Standard Working Force (one million strokes)	允许加工力 (30万回) Allowable Working Force (300,000 strokes)	初压 Initial Load	终压 Final Load						
50.9	117.6 (12.0)	235.2 (24.0)	817.2 (83.3)	4903.2 (499.7)	36.1	93.3	KMAC	200	15	SUWB



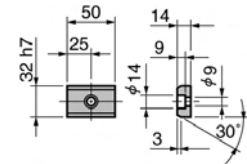
Order

Catalog No. **KMAC** (W) - (θ) **200 - 15**

■ 键详图 Key Specification



Option



KMAC200-20

Cam Diagram

60
20
48.9
Press Travel
55.3
Travel
20

Detail of Driver Backup

85
90
C10

■ 零部件表
Table of Components

代号 No.	名称 Description	数量 Qty	材料和备注 Material and Remark
①	滑动块 Cam Slider	1	HT300
②	驱动块 Cam Driver	1	HT300
③	上滑板B Base Plate B	1	铜合金 Bronze
④	底座 Cam Holder	1	HT300
⑤	弹簧滑座 Spring Guide Block	1	QT450
⑥	弹簧销 Spring Guide Pin	1	45
⑦	上滑板A Base Plate A	R/L1	铜合金 Bronze
⑩	凸V型 Cam Slide Guide	1	铜合金 Bronze
⑪	强制拉回 Positive Return Follower	2	45
⑫	安全挡板 Safety Plate	2	45
⑬	键A Key A	3	45
⑭	键B Key B	2	45
⑮	螺旋弹簧 Coil Spring	1	TM50-225
⑯	内六角螺钉 Hexagon Socket Head Bolt	6	M16×45
⑰	内六角螺钉 Hexagon Socket Head Bolt	2	M20×50
⑱	内六角螺钉 Hexagon Socket Head Bolt	4	M12×35
⑲	内六角螺钉 Hexagon Socket Head Bolt	5	M8×15
⑳	内六角螺钉 Hexagon Socket Head B It	2	M10×25
㉑	内六角螺钉 Hexagon Socket Head Bolt	2	M8×45
㉒	内六角螺钉 Hexagon Socket Head Bolt	2	M8×45
㉓	内螺纹圆柱销 Dowel Pin With Female Thread	6	φ13×40
㉔	缓冲块 Stopper	1	φ22×15
㉕	弹簧挡板 Spring Guide Plate	1	45
㉖	内六角螺钉 Hexagon Socket Head Bolt	4	M12×40
㉗	挡板 Spring Plate	1	45

行程 Travel S	加工力 Working Force kN(tonf)		弹簧力 Spring Force N(kgf)		滑块重量 Slider Weight kg	总重量 Total Weight kg	代号 Catalog No.	(W)	(θ)	SANKYO 代号对照 Catalog No.
	标准加工力 (100万回) Standard Working Force (one million strokes)	允许加工力 (30万回) Allowable Working Force (300,000 strokes)	初压 Initial Load	终压 Final Load						
55.3	117.6 (12.0)	235.2 (24.0)	817.2 (83.3)	4903.2 (499.7)	36.1	92.7	KMAC	200	20	SUWB



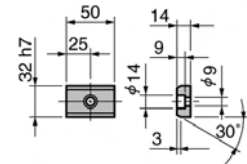
Order

Catalog No. **KMAC** (W) - (θ) **200 - 20**

■ 键详图 Key Specification



Option



KMAC 200

KMAC200-30

Cam Diagram

Detail of Driver Backup

■ 零部件表
Table of Components

代号 No.	名称 Description	数量 Qty	材料和备注 Material and Remark
①	滑动块 Cam Slider	1	HT300
②	驱动块 Cam Driver	1	HT300
③	上滑板B Base Plate B	1	铜合金 Bronze
④	底座 Cam Holder	1	HT300
⑤	弹簧滑座 Spring Guide Block	1	QT450
⑥	弹簧销 Spring Guide Pin	1	45
⑦	上滑板A Base Plate A	R/L1	铜合金 Bronze
⑩	凸V型 Cam Slide Guide	1	铜合金 Bronze
⑪	强制拉回 Positive Return Follower	2	45
⑫	安全挡板 Safety Plate	2	45
⑬	键A Key A	3	45
⑭	键B Key B	2	45
⑮	螺旋弹簧 Coil Spring	1	TM50-225
⑯	内六角螺钉 Hexagon Socket Head Bolt	6	M16×45
⑰	内六角螺钉 Hexagon Socket Head Bolt	2	M20×50
⑱	内六角螺钉 Hexagon Socket Head Bolt	4	M12×35
⑲	内六角螺钉 Hexagon Socket Head Bolt	5	M8×15
⑳	内六角螺钉 Hexagon Socket Head Bolt	2	M10×25
㉑	内六角螺钉 Hexagon Socket Head Bolt	2	M8×45
㉒	内六角螺钉 Hexagon Socket Head Bolt	4	M12×40
㉓	内螺纹圆柱销 Dowel Pin With Female Thread	6	φ13×40
㉔	缓冲块 Stopper	1	φ22×15
㉕	弹簧挡板 Spring Guide Plate	1	45
㉖	内六角螺钉 Hexagon Socket Head Bolt	4	M12×40
㉗	挡板 Spring Plate	1	45

行程 Travel S	加工力 Working Force kN(tonf)		弹簧力 Spring Force N(kgpf)		滑块重量 Slider Weight kg	总重量 Total Weight kg	代号 Catalog No.	(W)	(θ)	SANKY0 代号对照 Catalog No.
	标准加工力 (100万回) Standard Working Force (one million strokes)	允许加工力 (30万回) Allowable Working Force (300,000 strokes)	初压 Initial Load	终压 Final Load						
65.1	117.6 (12.0)	235.2 (24.0)	817.2 (83.3)	4903.2 (499.7)	36.1	92.7	KMAC	200	30	SUWB



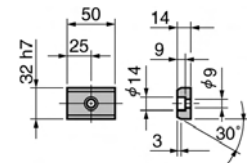
Order

Catalog No. **KMAC** (W) - (θ) **200 - 30**

■ 键详图 Key Specification



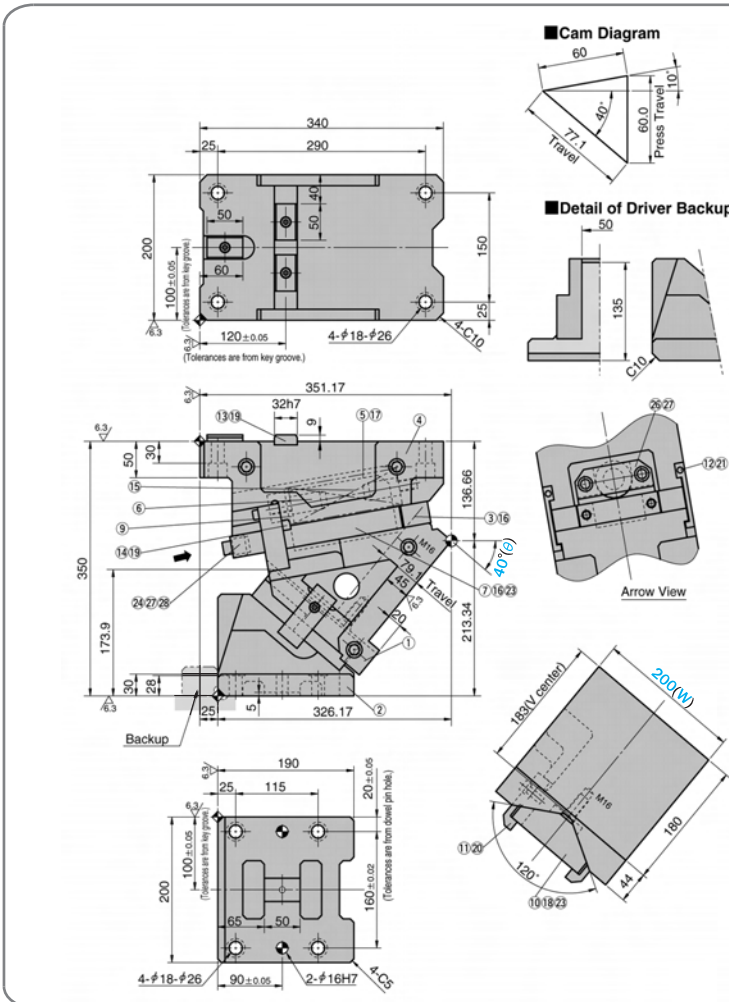
Option



KMAC200-40

■ 零部件表 Table of Components

代号 No.	名称 Description	数量 Qty	材料和备注 Material and Remark
①	滑动块 Cam Slider	1	HT300
②	驱动块 Cam Driver	1	HT300
③	上滑板B Base Plate B	1	铜合金 Bronze
④	底座 Cam Holder	1	HT300
⑤	弹簧滑座 Spring Guide Block	1	QT450
⑥	弹簧销 Spring Guide Pin	1	45
⑦	上滑板A Base Plate A	R/L1	铜合金 Bronze
⑩	凸V型 Cam Slide Guide	1	铜合金 Bronze
⑪	强制拉回 Positive Return Follower	2	45
⑫	安全挡板 Safety Plate	2	45
⑬	键A Key A	3	45
⑭	键B Key B	2	45
⑮	螺旋弹簧 Coil Spring	1	TM50-225
⑯	内六角螺钉 Hexagon Socket Head Bolt	6	M16×45
⑰	内六角螺钉 Hexagon Socket Head Bolt	2	M20×50
⑱	内六角螺钉 Hexagon Socket Head Bolt	4	M12×35
⑲	内六角螺钉 Hexagon Socket Head Bolt	5	M8×15
⑳	内六角螺钉 Hexagon Socket Head Bolt	2	M10×25
㉑	内六角螺钉 Hexagon Socket Head Bolt	2	M8×45
㉒	内六角螺钉 Hexagon Socket Head Bolt	4	M12×40
㉓	内螺纹圆柱销 Dowel Pin With Female Thread	6	φ13×40
㉔	缓冲块 Stopper	1	φ22×15
㉖	弹簧挡板 Spring Guide Plate	1	45
㉗	内六角螺钉 Hexagon Socket Head Bolt	4	M12×40
㉘	挡板 Spring Plate	1	45



行程 Travel S	加工力 Working Force kN(tonf)		弹簧力 Spring Force N(kgF)		滑块重量 Slider Weight kg	总重量 Total Weight kg	代号 Catalog No.	(W)	(θ)	SANKYO 代号对照 Catalog No.
	标准加工力 (100万回) Standard Working Force (one million strokes)	允许加工力 (30万回) Allowable Working Force (300,000 strokes)	初压 Initial Load	终压 Final Load						
77.1	117.6 (12.0)	235.2 (24.0)	817.2 (83.3)	4903.2 (499.7)	36.1	94.2	KMAC	200	40	SUWB



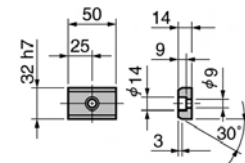
Order

Catalog No. **KMAC** (W) - (θ) **200 - 40**

■ 键详图 Key Specification



Option



KMAC 200

KMAC200-50

Cam Diagram

Detail of Driver Backup

Arrow View

■ 零部件表
Table of Components

代号 No.	名称 Description	数量 Qty	材料和备注 Material and Remark
①	滑动块 Cam Slider	1	HT300
②	驱动块 Cam Driver	1	HT300
③	上滑板B Base Plate B	1	铜合金 Bronze
④	底座 Cam Holder	1	HT300
⑤	弹簧滑座 Spring Guide Block	1	QT450
⑥	弹簧销 Spring Guide Pin	1	45
⑦	上滑板A Base Plate A	R/L1	铜合金 Bronze
⑩	凸V型 Cam Slide Guide	1	铜合金 Bronze
⑪	强制拉回 Positive Return Follower	2	45
⑫	安全挡板 Safety Plate	2	45
⑬	键A Key A	3	45
⑭	键B Key B	2	45
⑮	螺旋弹簧 Coil Spring	1	TM50-225
⑯	内六角螺钉 Hexagon Socket Head Bolt	6	M16×45
⑰	内六角螺钉 Hexagon Socket Head Bolt	2	M20×50
⑱	内六角螺钉 Hexagon Socket Head Bolt	4	M12×35
⑲	内六角螺钉 Hexagon Socket Head Bolt	5	M8×15
⑳	内六角螺钉 Hexagon Socket Head Bolt	2	M10×25
㉑	内六角螺钉 Hexagon Socket Head Bolt	2	M8×45
㉒	内六角螺钉 Hexagon Socket Head Bolt	4	M12×40
㉓	内六角螺钉 Hexagon Socket Head Bolt	4	M12×40
㉔	内六角螺钉 Hexagon Socket Head Bolt	4	M12×40
㉕	内六角螺钉 Hexagon Socket Head Bolt	4	M12×40
㉖	内六角螺钉 Hexagon Socket Head Bolt	4	M12×40
㉗	内六角螺钉 Hexagon Socket Head Bolt	4	M12×40
㉘	内六角螺钉 Hexagon Socket Head Bolt	4	M12×40
㉙	内六角螺钉 Hexagon Socket Head Bolt	4	M12×40
㉚	内六角螺钉 Hexagon Socket Head Bolt	4	M12×40
㉛	内六角螺钉 Hexagon Socket Head Bolt	4	M12×40
㉜	内六角螺钉 Hexagon Socket Head Bolt	4	M12×40
㉝	内六角螺钉 Hexagon Socket Head Bolt	4	M12×40
㉞	内六角螺钉 Hexagon Socket Head Bolt	4	M12×40
㉟	内六角螺钉 Hexagon Socket Head Bolt	4	M12×40
㊱	内六角螺钉 Hexagon Socket Head Bolt	4	M12×40
㊲	内六角螺钉 Hexagon Socket Head Bolt	4	M12×40
㊳	内六角螺钉 Hexagon Socket Head Bolt	4	M12×40
㊴	内六角螺钉 Hexagon Socket Head Bolt	4	M12×40
㊵	内六角螺钉 Hexagon Socket Head Bolt	4	M12×40
㊶	内六角螺钉 Hexagon Socket Head Bolt	4	M12×40
㊷	内六角螺钉 Hexagon Socket Head Bolt	4	M12×40
㊸	内六角螺钉 Hexagon Socket Head Bolt	4	M12×40
㊹	内六角螺钉 Hexagon Socket Head Bolt	4	M12×40
㊺	内六角螺钉 Hexagon Socket Head Bolt	4	M12×40
㊻	内六角螺钉 Hexagon Socket Head Bolt	4	M12×40
㊼	内六角螺钉 Hexagon Socket Head Bolt	4	M12×40
㊽	内六角螺钉 Hexagon Socket Head Bolt	4	M12×40
㊾	内六角螺钉 Hexagon Socket Head Bolt	4	M12×40
㊿	内六角螺钉 Hexagon Socket Head Bolt	4	M12×40
1	缓冲块 Stopper	1	ø22×15
2	弹簧挡板 Spring Guide Plate	1	45
3	内六角螺钉 Hexagon Socket Head Bolt	4	M12×40
4	挡板 Spring Plate	1	45

行程 Travel S	加工力 Working Force kN(tonf)		弹簧力 Spring Force N(kgpf)		滑块重量 Slider Weight kg	总重量 Total Weight kg	代号 Catalog No.	(W)	(θ)	SANKYO 代号对照 Catalog No.
	标准加工力 (100万回) Standard Working Force (one million strokes)	允许加工力 (30万回) Allowable Working Force (300,000 strokes)	初压 Initial Load	终压 Final Load						
93.3	117.6 (12.0)	235.2 (24.0)	817.2 (83.3)	4903.2 (499.7)	36.1	93.7	KMAC	200	50	SUWB



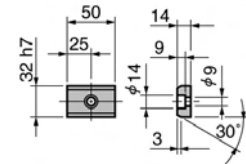
Order

Catalog No. **KMAC** (W) - (θ) **200 - 50**



Option

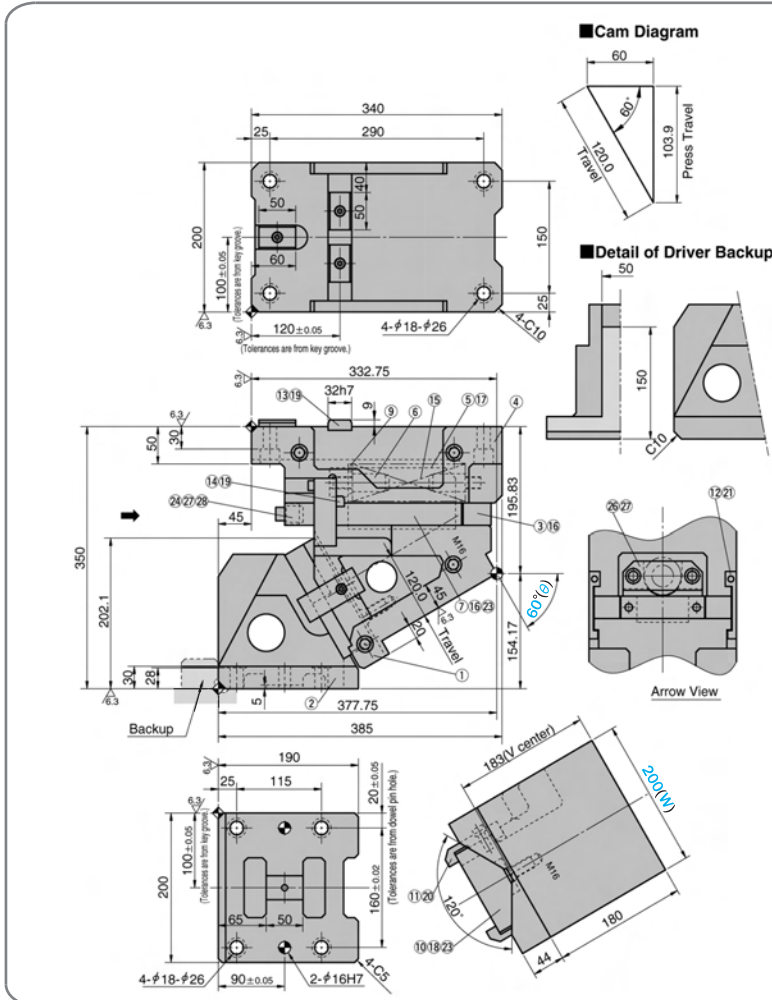
■ 键详图 Key Specification



KMAC200-60

■ 零部件表 Table of Components

代号 No.	名称 Description	数量 Qty	材料和备注 Material and Remark
①	滑动块 Cam Slider	1	HT300
②	驱动块 Cam Driver	1	HT300
③	上滑板B Base Plate B	1	铜合金 Bronze
④	底座 Cam Holder	1	HT300
⑤	弹簧滑座 Spring Guide Block	1	QT450
⑥	弹簧销 Spring Guide Pin	1	45
⑦	上滑板A Base Plate A	R/L1	铜合金 Bronze
⑩	凸V型 Cam Slide Guide	1	铜合金 Bronze
⑪	强制拉回 Positive Return Follower	2	45
⑫	安全挡板 Safety Plate	2	45
⑬	键A Key A	3	45
⑭	键B Key B	2	45
⑮	螺旋弹簧 Coil Spring	1	TM50-225
⑯	内六角螺钉 Hexagon Socket Head Bolt	6	M16×45
⑰	内六角螺钉 Hexagon Socket Head Bolt	2	M20×50
⑱	内六角螺钉 Hexagon Socket Head Bolt	4	M12×35
⑲	内六角螺钉 Hexagon Socket Head Bolt	5	M8×15
⑳	内六角螺钉 Hexagon Socket Head Bolt	2	M10×25
㉑	内六角螺钉 Hexagon Socket Head Bolt	2	M8×45
㉒	内六角螺钉 Hexagon Socket Head Bolt	4	M12×40
㉓	内六角螺钉 Hexagon Socket Head Bolt	2	M8×45
㉔	内六角螺钉 Hexagon Socket Head Bolt	4	M12×40
㉕	内六角螺钉 Hexagon Socket Head Bolt	2	M8×45
㉖	内六角螺钉 Hexagon Socket Head Bolt	4	M12×40
㉗	内六角螺钉 Hexagon Socket Head Bolt	4	M12×40
㉘	内六角螺钉 Hexagon Socket Head Bolt	2	M8×45
㉙	内六角螺钉 Hexagon Socket Head Bolt	4	M12×40
㉚	内六角螺钉 Hexagon Socket Head Bolt	2	M8×45
㉛	内六角螺钉 Hexagon Socket Head Bolt	4	M12×40
㉜	内六角螺钉 Hexagon Socket Head Bolt	2	M8×45
㉝	内六角螺钉 Hexagon Socket Head Bolt	4	M12×40
㉞	内六角螺钉 Hexagon Socket Head Bolt	2	M8×45
㉟	内六角螺钉 Hexagon Socket Head Bolt	4	M12×40
㊱	内六角螺钉 Hexagon Socket Head Bolt	2	M8×45
㊲	内六角螺钉 Hexagon Socket Head Bolt	4	M12×40
㊳	内六角螺钉 Hexagon Socket Head Bolt	2	M8×45
㊴	内六角螺钉 Hexagon Socket Head Bolt	4	M12×40
㊵	内六角螺钉 Hexagon Socket Head Bolt	2	M8×45
㊶	内六角螺钉 Hexagon Socket Head Bolt	4	M12×40
㊷	内六角螺钉 Hexagon Socket Head Bolt	2	M8×45
㊸	内六角螺钉 Hexagon Socket Head Bolt	4	M12×40
㊹	内六角螺钉 Hexagon Socket Head Bolt	2	M8×45
㊺	内六角螺钉 Hexagon Socket Head Bolt	4	M12×40
㊻	内六角螺钉 Hexagon Socket Head Bolt	2	M8×45
㊼	内六角螺钉 Hexagon Socket Head Bolt	4	M12×40
㊽	内六角螺钉 Hexagon Socket Head Bolt	2	M8×45
㊾	内六角螺钉 Hexagon Socket Head Bolt	4	M12×40
㊿	内六角螺钉 Hexagon Socket Head Bolt	2	M8×45
Ⓚ	内六角螺钉 Hexagon Socket Head Bolt	4	M12×40
Ⓛ	内六角螺钉 Hexagon Socket Head Bolt	2	M8×45
Ⓜ	内六角螺钉 Hexagon Socket Head Bolt	4	M12×40
Ⓨ	内六角螺钉 Hexagon Socket Head Bolt	2	M8×45
Ⓩ	内六角螺钉 Hexagon Socket Head Bolt	4	M12×40



行程 Travel S	加工力 Working Force kN(tonf)		弹簧力 Spring Force N(kg _f)		滑块重量 Slider Weight kg	总重量 Total Weight kg	代号 Catalog No.	(W)	(θ)	SANKYO 代号对照 Catalog No.
	标准加工力 (100万回) Standard Working Force (one million strokes)	允许加工力 (30万回) Allowable Working Force (300,000 strokes)	初压 Initial Load	终压 Final Load						
120.0	117.6 (12.0)	235.2 (24.0)	817.2 (83.3)	4903.2 (499.7)	38.7	97.3	KMAC	200	60	SUWB



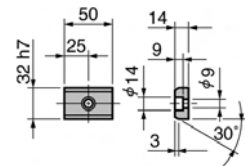
Order

Catalog No. **KMAC** (W) **200** - (θ) **60**



Option

■ 键详图 Key Specification



KMAC
200

KMAC300-00

Technical drawing showing main dimensions: 340, 300, 250, 150±0.05, 120±0.05, 290, 25, 4-C1.0, 6.3, 6.7, 4-φ22-φ32, 25, 313.00, 7.16/23, 13.19, 32h7, 5.17, 4, 5.6, 15, 3.16, 38.6 Travel, 20, 292, 350, 102.0, 28, 138, 5, 175, 2, 6.3, 2.10±0.02, 20±0.05, 115, 25, 90±0.05, 2-φ16H7, 125±0.05, 65, 50, 210±0.02, 4.5, 190.

■ 零部件表 Table of Components

代号 No.	名称 Description	数量 Qty	材料和备注 Material and Remark
①	滑动块 Cam Slider	1	HT300
②	驱动块 Cam Driver	1	HT300
③	上滑板B Base Plate B	1	铜合金 Bronze
④	底座 Cam Holder	1	HT300
⑤	弹簧滑座 Spring Guide Block	1	QT450
⑥	弹簧销 Spring Guide Pin	1	45
⑦	上滑板A Base Plate A	R/L 1	铜合金 Bronze
⑩	凸型 Cam Slide Guide	1	铜合金 Bronze
⑪	强制拉回 Positive Return Follower	2	45
⑫	安全挡板 Safety Plate	2	45
⑬	键A Key A	3	45
⑭	键B Key B	2	45
⑮	螺旋弹簧 Coil Spring	2	TM50-225
⑯	内六角螺钉 Hexagon Socket Head Bolt	6	M16×45
⑰	内六角螺钉 Hexagon Socket Head Bolt	4	M20×50
⑱	内六角螺钉 Hexagon Socket Head Bolt	4	M12×35
⑲	内六角螺钉 Hexagon Socket Head Bolt	5	M8×15
⑳	内六角螺钉 Hexagon Socket Head Bolt	2	M10×25
㉑	内六角螺钉 Hexagon Socket Head Bolt	2	M8×45
㉒	内六角螺钉 Hexagon Socket Head Bolt	2	M8×45
㉓	内螺纹圆柱销 Dowel Pin With Female Thread	6	φ13×40
㉔	缓冲块 Stopper	2	φ22×15
㉕	弹簧挡板 Spring Guide Plate	1	45
㉗	内六角螺钉 Hexagon Socket Head Bolt	4	M16×50
㉘	挡板 Spring Plate	1	45

■ Detail of Driver Backup

■ Cam Diagram

行程 Travel S	加工力 Working Force kN(tonf)		弹簧力 Spring Force N(kgpf)		滑块重量 Slider Weight kg	总重量 Total Weight kg	代号 Catalog No.	(W)	(θ)	SANKYO 代号对照 Catalog No.
	标准加工力 (100万回) Standard Working Force (one million strokes)	允许加工力 (30万回) Allowable Working Force (300,000 strokes)	初压 Initial Load	终压 Final Load						
38.6	196.0 (20.0)	392.0 (40.0)	1634.4 (166.6)	9806.4 (999.4)	59.5	137.2	KMAC	300	00	SUWB



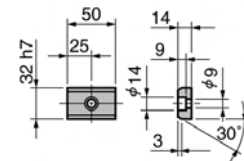
Order

Catalog No. [W] - [θ]
KMAC 300 - 00

■ 键详图 Key Specification



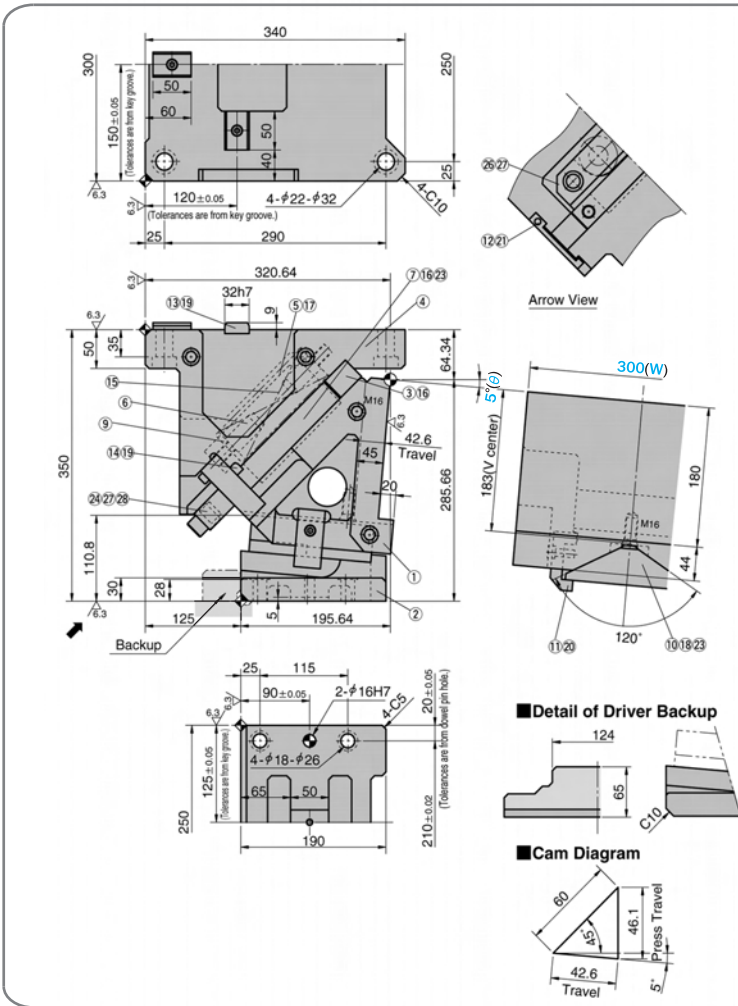
Option



KMAC300-05

■ 零部件表 Table of Components

代号 No.	名称 Description	数量 Qty	材料和备注 Material and Remark
①	滑动块 Cam Slider	1	HT300
②	驱动块 Cam Driver	1	HT300
③	上滑板B Base Plate B	1	铜合金 Bronze
④	底座 Cam Holder	1	HT300
⑤	弹簧滑座 Spring Guide Block	1	QT450
⑥	弹簧销 Spring Guide Pin	1	45
⑦	上滑板A Base Plate A	R/L1	铜合金 Bronze
⑩	凸V型 Cam Slide Guide	1	铜合金 Bronze
⑪	强制拉回 Positive Return Follower	2	45
⑫	安全挡板 Safety Plate	2	45
⑬	键A Key A	3	45
⑭	键B Key B	2	45
⑮	螺旋弹簧 Coil Spring	2	TM50-225
⑯	内六角螺钉 Hexagon Socket Head Bolt	6	M16×45
⑰	内六角螺钉 Hexagon Socket Head Bolt	4	M20×50
⑱	内六角螺钉 Hexagon Socket Head Bolt	4	M12×35
⑲	内六角螺钉 Hexagon Socket Head Bolt	5	M8×15
⑳	内六角螺钉 Hexagon Socket Head Bolt	2	M10×25
㉑	内六角螺钉 Hexagon Socket Head Bolt	2	M8×45
㉒	内螺纹圆柱销 Dowel Pin With Female Thread	6	φ13×40
㉓	缓冲块 Stopper	2	φ22×15
㉔	弹簧挡板 Spring Guide Plate	1	45
㉕	内六角螺钉 Hexagon Socket Head Bolt	4	M16×50
㉖	挡板 Spring Plate	1	45



行程 Travel S	加工力 Working Force kN(tonf)		弹簧力 Spring Force N(kgF)		滑块重量 Slider Weight kg	总重量 Total Weight kg	代号 Catalog No.	(W)	(θ)	SANKYO 代号对照 Catalog No.
	标准加工力 (100万回) Standard Working Force (one million strokes)	允许加工力 (30万回) Allowable Working Force (300,000 strokes)	初压 Initial Load	终压 Final Load						
42.6	196.0 (20.0)	392.0 (40.0)	1634.4 (166.6)	9806.4 (999.4)	59.5	135.9	KMAC	300	05	SUWB



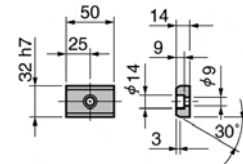
Order

Catalog No. **KMAC** (W) - (θ) **300 - 05**

■ 键详图 Key Specification



Option



KMAC
300

KMAC300-10

Detail of Driver Backup

Cam Diagram

■ 零部件表
Table of Components

代号 No.	名称 Description	数量 Qty	材料和备注 Material and Remark
①	滑动块 Cam Slider	1	HT300
②	驱动块 Cam Driver	1	HT300
③	上滑板B Base Plate B	1	铜合金 Bronze
④	底座 Cam Holder	1	HT300
⑤	弹簧滑座 Spring Guide Block	1	QT450
⑥	弹簧销 Spring Guide Pin	1	45
⑦	上滑板A Base Plate A	R/L 1	铜合金 Bronze
⑩	凸V型 Cam Slide Guide	1	铜合金 Bronze
⑪	强制拉回 Positive Return Follower	2	45
⑫	安全挡板 Safety Plate	2	45
⑬	键A Key A	3	45
⑭	键B Key B	2	45
⑮	螺旋弹簧 Coil Spring	2	TM50-225
⑯	内六角螺钉 Hexagon Socket Head Bolt	6	M16×45
⑰	内六角螺钉 Hexagon Socket Head Bolt	4	M20×50
⑱	内六角螺钉 Hexagon Socket Head Bolt	4	M12×35
⑲	内六角螺钉 Hexagon Socket Head Bolt	5	M8×15
⑳	内六角螺钉 Hexagon Socket Head Bolt	2	M10×25
㉑	内六角螺钉 Hexagon Socket Head Bolt	2	M8×45
㉒	内六角螺钉 Hexagon Socket Head Bolt	2	M8×45
㉓	内螺纹圆柱销 Dowel Pin With Female Thread	6	φ13×40
㉔	缓冲块 Stopper	2	φ22×15
㉖	弹簧挡板 Spring Guide Plate	1	45
㉗	内六角螺钉 Hexagon Socket Head Bolt	4	M16×50
㉘	挡板 Spring Plate	1	45

行程 Travel S	加工力 Working Force kN(tonf)		弹簧力 Spring Force N(kgpf)		滑块重量 Slider Weight kg	总重量 Total Weight kg	代号 Catalog No.	(W)	(θ)	SANKYO 代号对照 Catalog No.
	标准加工力 (100万回) Standard Working Force (one million strokes)	允许加工力 (30万回) Allowable Working Force (300,000 strokes)	初压 Initial Load	终压 Final Load						
46.7	196.0 (20.0)	392.0 (40.0)	1634.4 (166.6)	9806.4 (999.4)	59.6	135.7	KMAC	300	10	SUWB



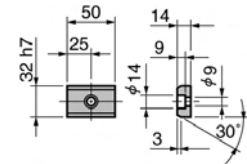
Order

Catalog No. **KMAC** (W) - (θ) **300 - 10**



Option

■ 键详图 Key Specification



KMAC300-15

Cam Diagram

60
35°
47.5
15° Press Travel
50.9 Travel

Detail of Driver Backup

124
85.6
C1.0

■ 零部件表
Table of Components

代号 No.	名称 Description	数量 Qty	材料和备注 Material and Remark
①	滑动块 Cam Slider	1	HT300
②	驱动块 Cam Driver	1	HT300
③	上滑板B Base Plate B	1	铜合金 Bronze
④	底座 Cam Holder	1	HT300
⑤	弹簧滑座 Spring Guide Block	1	QT450
⑥	弹簧销 Spring Guide Pin	1	45
⑦	上滑板A Base Plate A	R/L1	铜合金 Bronze
⑩	凸型 Cam Slide Guide	1	铜合金 Bronze
⑪	强制拉回 Positive Return Follower	2	45
⑫	安全挡板 Safety Plate	2	45
⑬	键A Key A	3	45
⑭	键B Key B	2	45
⑮	螺旋弹簧 Coil Spring	2	TM50-225
⑯	内六角螺钉 Hexagon Socket Head Bolt	6	M16×45
⑰	内六角螺钉 Hexagon Socket Head Bolt	4	M20×50
⑱	内六角螺钉 Hexagon Socket Head Bolt	4	M12×35
⑲	内六角螺钉 Hexagon Socket Head Bolt	5	M8×15
⑳	内六角螺钉 Hexagon Socket Head Bolt	2	M10×25
㉑	内六角螺钉 Hexagon Socket Head Bolt	2	M8×45
㉒	内六角螺钉 Hexagon Socket Head Bolt	2	M8×45
㉓	内螺纹圆柱销 Dowel Pin With Female Thread	6	φ13×40
㉔	缓冲块 Stopper	2	φ22×15
㉕	弹簧挡板 Spring Guide Plate	1	45
㉖	内六角螺钉 Hexagon Socket Head Bolt	4	M16×50
㉗	挡板 Spring Plate	1	45

行程 Travel S	加工力 Working Force kN(tonf)		弹簧力 Spring Force N(kgpf)		滑块重量 Slider Weight kg	总重量 Total Weight kg	代号 Catalog No.	(W)	(θ)	SANKYO 代号对照 Catalog No.
	标准加工力 (100万回) Standard Working Force (one million strokes)	允许加工力 (30万回) Allowable Working Force (300,000 strokes)	初压 Initial Load	终压 Final Load						
50.9	196.0 (20.0)	392.0 (40.0)	1634.4 (166.6)	9806.4 (999.4)	59.6	133.0	KMAC	300	15	SUWB



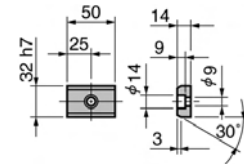
Order

Catalog No. **KMAC** (W) - (θ) **300 - 15**

■ 键详图 Key Specification



Option



KMAC
300

KMAC300-20

Cam Diagram

Detail of Driver Backup

■ 零部件表
Table of Components

代号 No.	名称 Description	数量 Qty	材料和备注 Material and Remark
①	滑动块 Cam Slider	1	HT300
②	驱动块 Cam Driver	1	HT300
③	上滑板B Base Plate B	1	铜合金 Bronze
④	底座 Cam Holder	1	HT300
⑤	弹簧滑座 Spring Guide Block	1	QT450
⑥	弹簧销 Spring Guide Pin	1	45
⑦	上滑板A Base Plate A	R/L 1	铜合金 Bronze
⑩	凸V型 Cam Slide Guide	1	铜合金 Bronze
⑪	强制拉回 Positive Return Follower	2	45
⑫	安全挡板 Safety Plate	2	45
⑬	键A Key A	3	45
⑭	键B Key B	2	45
⑮	螺旋弹簧 Coil Spring	2	TM50-225
⑯	内六角螺钉 Hexagon Socket Head Bolt	6	M16×45
⑰	内六角螺钉 Hexagon Socket Head Bolt	4	M20×50
⑱	内六角螺钉 Hexagon Socket Head Bolt	4	M12×35
⑲	内六角螺钉 Hexagon Socket Head Bolt	5	M8×15
⑳	内六角螺钉 Hexagon Socket Head Bolt	2	M10×25
㉑	内六角螺钉 Hexagon Socket Head Bolt	2	M8×45
㉒	内六角螺钉 Hexagon Socket Head Bolt	4	M16×50
㉓	内螺纹圆柱销 Dowel Pin With Female Thread	6	φ13×40
㉔	缓冲块 Stopper	2	φ22×15
㉖	弹簧挡板 Spring Guide Plate	1	45
㉗	内六角螺钉 Hexagon Socket Head Bolt	4	M16×50
㉘	挡板 Spring Plate	1	45

行程 Travel S	加工力 Working Force kN(tonf)		弹簧力 Spring Force N(kgpf)		滑块重量 Slider Weight kg	总重量 Total Weight kg	代号 Catalog No.	(W)	(θ)	SANKYO 代号对照 Catalog No.
	标准加工力 (100万回) Standard Working Force (one million strokes)	允许加工力 (30万回) Allowable Working Force (300,000 strokes)	初压 Initial Load	终压 Final Load						
55.3	196.0 (20.0)	392.0 (40.0)	1634.4 (166.6)	9806.4 (999.4)	59.6	131.5	KMAC	300	20	SUWB



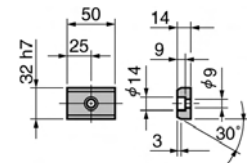
Order

Catalog No. **KMAC** (W) - (θ) **300 - 20**

■ 键详图 Key Specification



Option



KMAC300-30

Cam Diagram

60
30°
65.1 Travel
53.0 Press Travel
20

Detail of Driver Backup

100
115
C10

■ 零部件表
Table of Components

代号 No.	名称 Description	数量 Qty	材料和备注 Material and Remark
①	滑动块 Cam Slider	1	HT300
②	驱动块 Cam Driver	1	HT300
③	上滑板B Base Plate B	1	铜合金 Bronze
④	底座 Cam Holder	1	HT300
⑤	弹簧滑座 Spring Guide Block	1	QT450
⑥	弹簧销 Spring Guide Pin	1	45
⑦	上滑板A Base Plate A	R/L 1	铜合金 Bronze
⑩	凸V型 Cam Slide Guide	1	铜合金 Bronze
⑪	强制拉回 Positive Return Follower	2	45
⑫	安全挡板 Safety Plate	2	45
⑬	键A Key A	3	45
⑭	键B Key B	2	45
⑮	螺旋弹簧 Coil Spring	2	TM50-225
⑯	内六角螺钉 Hexagon Socket Head Bolt	6	M16×45
⑰	内六角螺钉 Hexagon Socket Head Bolt	4	M20×50
⑱	内六角螺钉 Hexagon Socket Head Bolt	4	M12×35
⑲	内六角螺钉 Hexagon Socket Head Bolt	5	M8×15
⑳	内六角螺钉 Hexagon Socket Head Bolt	2	M10×25
㉑	内六角螺钉 Hexagon Socket Head Bolt	2	M8×45
㉒	内六角螺钉 Hexagon Socket Head Bolt	6	φ13×40
㉓	缓冲块 Stopper	2	φ22×15
㉔	弹簧挡板 Spring Guide Plate	1	45
㉕	内六角螺钉 Hexagon Socket Head Bolt	4	M16×50
㉖	挡板 Spring Plate	1	45

行程 Travel S	加工力 Working Force kN(tonf)		弹簧力 Spring Force N(kgf)		滑块重量 Slider Weight kg	总重量 Total Weight kg	代号 Catalog No.	(W)	(θ)	SANKYO 代号对照 Catalog No.
	标准加工力 (100万回) Standard Working Force (one million strokes)	允许加工力 (30万回) Allowable Working Force (300,000 strokes)	初压 Initial Load	终压 Final Load						
65.1	196.0 (20.0)	392.0 (40.0)	1634.4 (166.6)	9806.4 (999.4)	59.6	131.0	KMAC	300	30	SUWB



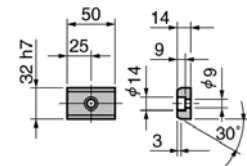
Order

Catalog No. **KMAC** (W) - (θ) **300 - 30**



Option

■ 键详图 Key Specification



KMAC 300

KMAC300-40

Cam Diagram

Detail of Driver Backup

Arrow View

■ 零部件表
Table of Components

代号 No.	名称 Description	数量 Qty	材料和备注 Material and Remark
①	滑动块 Cam Slider	1	HT300
②	驱动块 Cam Driver	1	HT300
③	上滑板B Base Plate B	1	铜合金 Bronze
④	底座 Cam Holder	1	HT300
⑤	弹簧滑座 Spring Guide Block	1	QT450
⑥	弹簧销 Spring Guide Pin	1	45
⑦	上滑板A Base Plate A	R/L 1	铜合金 Bronze
⑩	凸V型 Cam Slide Guide	1	铜合金 Bronze
⑪	强制拉回 Positive Return Follower	2	45
⑫	安全挡板 Safety Plate	2	45
⑬	键A Key A	3	45
⑭	键B Key B	2	45
⑮	螺旋弹簧 Coil Spring	2	TM50-225
⑯	内六角螺钉 Hexagon Socket Head Bolt	6	M16×45
⑰	内六角螺钉 Hexagon Socket Head Bolt	4	M20×50
⑱	内六角螺钉 Hexagon Socket Head Bolt	4	M12×35
⑲	内六角螺钉 Hexagon Socket Head Bolt	5	M8×15
⑳	内六角螺钉 Hexagon Socket Head Bolt	2	M10×25
㉑	内六角螺钉 Hexagon Socket Head Bolt	2	M8×45
㉒	内六角螺钉 Hexagon Socket Head Bolt	2	M8×45
㉓	内螺纹圆柱销 Dowel Pin With Female Thread	6	φ13×40
㉔	缓冲块 Stopper	2	φ22×15
㉖	弹簧挡板 Spring Guide Plate	1	45
㉗	内六角螺钉 Hexagon Socket Head Bolt	4	M16×50
㉘	挡板 Spring Plate	1	45

行程 Travel S	加工力 Working Force kN(tonf)		弹簧力 Spring Force N(kgf)		滑块重量 Slider Weight kg	总重量 Total Weight kg	代号 Catalog No.	(W)	(θ)	SANKYO 代号对照 Catalog No.
	标准加工力 (100万回) Standard Working Force (one million strokes)	允许加工力 (30万回) Allowable Working Force (300,000 strokes)	初压 Initial Load	终压 Final Load						
77.1	196.0 (20.0)	392.0 (40.0)	1634.4 (166.6)	9806.4 (999.4)	59.6	133.3	KMAC	300	40	SUWB



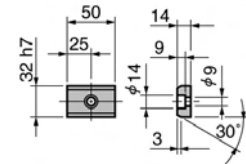
Order

Catalog No. **KMAC** (W) - (θ) **300 - 40**



Option

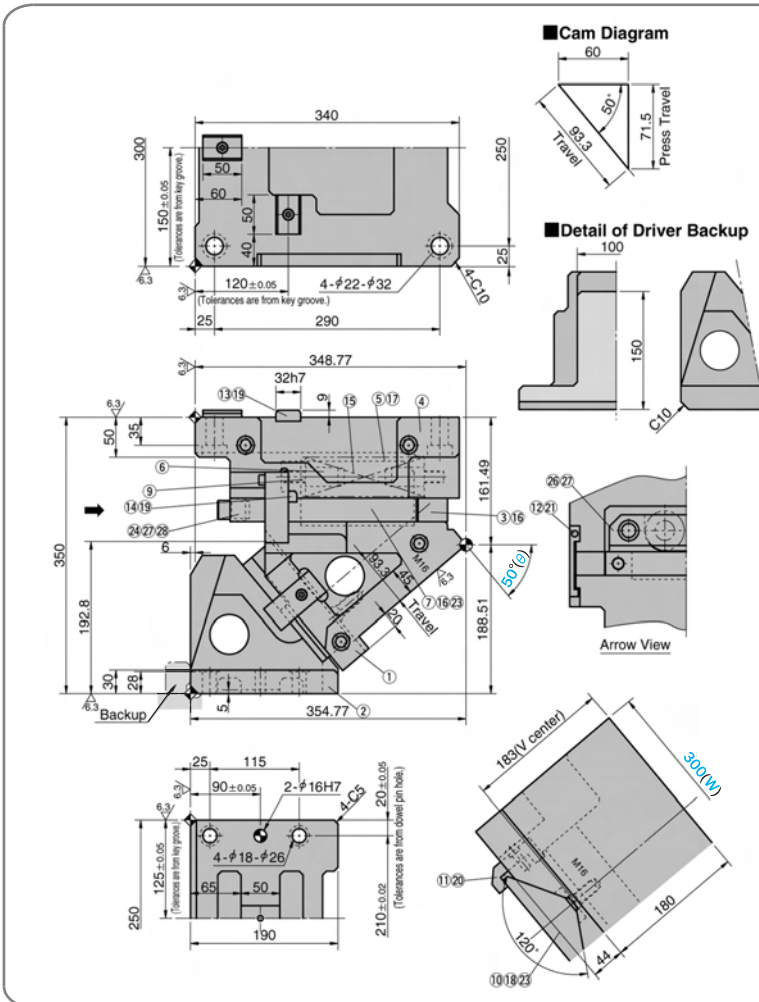
■ 键详图 Key Specification



KMAC300-50

■ 零部件表 Table of Components

代号 No.	名称 Description	数量 Qty	材料和备注 Material and Remark
①	滑动块 Cam Slider	1	HT300
②	驱动块 Cam Driver	1	HT300
③	上滑板B Base Plate B	1	铜合金 Bronze
④	底座 Cam Holder	1	HT300
⑤	弹簧滑座 Spring Guide Block	1	QT450
⑥	弹簧销 Spring Guide Pin	1	45
⑦	上滑板A Base Plate A	R/L1	铜合金 Bronze
⑩	凸V型 Cam Slide Guide	1	铜合金 Bronze
⑪	强制拉回 Positive Return Follower	2	45
⑫	安全挡板 Safety Plate	2	45
⑬	键A Key A	3	45
⑭	键B Key B	2	45
⑮	螺旋弹簧 Coil Spring	2	TM50-225
⑯	内六角螺钉 Hexagon Socket Head Bolt	6	M16×45
⑰	内六角螺钉 Hexagon Socket Head Bolt	4	M20×50
⑱	内六角螺钉 Hexagon Socket Head Bolt	4	M12×35
⑲	内六角螺钉 Hexagon Socket Head Bolt	5	M8×15
⑳	内六角螺钉 Hexagon Socket Head Bolt	2	M10×25
㉑	内六角螺钉 Hexagon Socket Head Bolt	2	M8×45
㉒	内六角螺钉 Hexagon Socket Head Bolt	2	M8×45
㉓	内螺纹圆柱销 Dowel Pin With Female Thread	6	φ13×40
㉔	缓冲块 Stopper	2	φ22×15
㉕	弹簧挡板 Spring Guide Plate	1	45
㉖	内六角螺钉 Hexagon Socket Head Bolt	4	M16×50
㉗	挡板 Spring Plate	1	45



行程 Travel S	加工力 Working Force kN(tonf)		弹簧力 Spring Force N(kgpf)		滑块重量 Slider Weight kg	总重量 Total Weight kg	代号 Catalog No.	(W)	(θ)	SANKYO 代号对照 Catalog No.
	标准加工力 (100万回) Standard Working Force (one million strokes)	允许加工力 (30万回) Allowable Working Force (300,000 strokes)	初压 Initial Load	终压 Final Load						
93.3	196.0 (20.0)	392.0 (40.0)	1634.4 (166.6)	9806.4 (999.4)	59.6	130.9	KMAC	300	50	SUWB



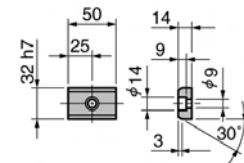
Order

Catalog No. **KMAC** (W) - (θ) **300 - 50**

■ 键详图 Key Specification



Option



KMAC
300

KMAC300-60

Cam Diagram
60
120.0 Travel
60°
103.9 Press Travel

Detail of Driver Backup
100
150
C1.0

Arrow View
26.7
12.21
7.16/23
60°(θ)

■ 零部件表
Table of Components

代号 No.	名称 Description	数量 Qty	材料和备注 Material and Remark
①	滑动块 Cam Slider	1	HT300
②	驱动块 Cam Driver	1	HT300
③	上滑板B Base Plate B	1	铜合金 Bronze
④	底座 Cam Holder	1	HT300
⑤	弹簧滑座 Spring Guide Block	1	QT450
⑥	弹簧销 Spring Guide Pin	1	45
⑦	上滑板A Base Plate A	R/L 1	铜合金 Bronze
⑩	凸V型 Cam Slide Guide	1	铜合金 Bronze
⑪	强制拉回 Positive Return Follower	2	45
⑫	安全挡板 Safety Plate	2	45
⑬	键A Key A	3	45
⑭	键B Key B	2	45
⑮	螺旋弹簧 Coil Spring	2	TM50-225
⑯	内六角螺钉 Hexagon Socket Head Bolt	6	M16×45
⑰	内六角螺钉 Hexagon Socket Head Bolt	4	M20×50
⑱	内六角螺钉 Hexagon Socket Head Bolt	4	M12×35
⑲	内六角螺钉 Hexagon Socket Head Bolt	5	M8×15
⑳	内六角螺钉 Hexagon Socket Head Bolt	2	M10×25
㉑	内六角螺钉 Hexagon Socket Head Bolt	2	M8×45
㉒	内六角螺钉 Hexagon Socket Head Bolt	4	M16×50
㉓	内螺纹圆柱销 Dowel Pin With Female Thread	6	φ13×40
㉔	缓冲块 Stopper	2	φ22×15
㉖	弹簧挡板 Spring Guide Plate	1	45
㉗	内六角螺钉 Hexagon Socket Head Bolt	4	M16×50
㉘	挡板 Spring Plate	1	45

行程 Travel S	加工力 Working Force kN(tonf)		弹簧力 Spring Force N(kgF)		滑块重量 Slider Weight kg	总重量 Total Weight kg	代号 Catalog No.	(W)	(θ)	SANKYO 代号对照 Catalog No.
	标准加工力 (100万回) Standard Working Force (one million strokes)	允许加工力 (30万回) Allowable Working Force (300,000 strokes)	初压 Initial Load	终压 Final Load						
120.0	196.0 (20.0)	392.0 (40.0)	1634.4 (166.6)	9806.4 (999.4)	63.2	136.1	KMAC	300	60	SUWB



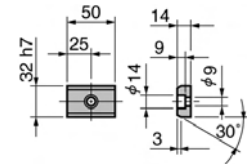
Order

Catalog No. **KMAC** (W) - (θ) **300 - 60**

■ 键详图 Key Specification



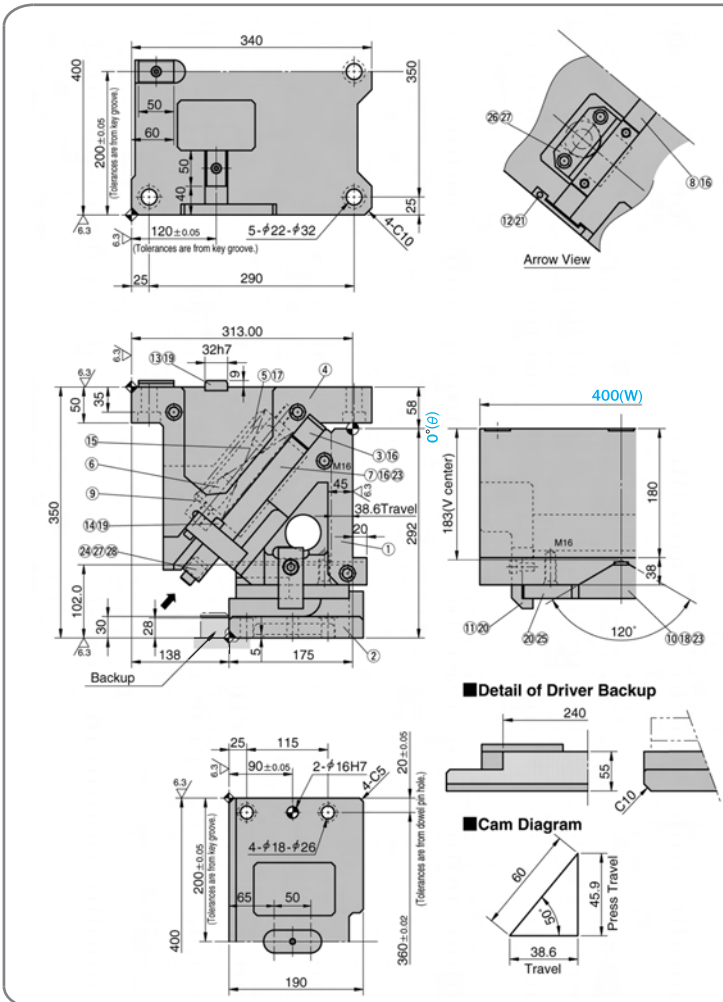
Option



KMAC400-00

■ 零部件表 Table of Components

代号 No.	名称 Description	数量 Qty	材料和备注 Material and Remark
①	滑动块 Cam Slider	1	HT300
②	驱动块 Cam Driver	1	HT300
③	上滑板B Base Plate B	2	铜合金 Bronze
④	底座 Cam Holder	1	HT300
⑤	弹簧滑座 Spring Guide Block	2	QT450
⑥	弹簧销 Spring Guide Pin	2	45
⑦	上滑板A Base Plate A	R/L1	铜合金 Bronze
⑧	上滑板C Base Plate C	1	铜合金 Bronze
⑩	凸V型 Cam Slide Guide	1	铜合金 Bronze
⑪	强制拉回 Positive Return Follower	2	45
⑫	安全挡板 Safety Plate	2	45
⑬	键A Key A	3	45
⑭	键B Key B	3	45
⑮	螺旋弹簧 Coil Spring	2	TM50-225
⑯	内六角螺钉 Hexagon Socket Head Bolt	11	M16×45
⑰	内六角螺钉 Hexagon Socket Head Bolt	4	M20×50
⑱	内六角螺钉 Hexagon Socket Head Bolt	4	M12×35
⑲	内六角螺钉 Hexagon Socket Head Bolt	6	M8×15
⑳	内六角螺钉 Hexagon Socket Head Bolt	8	M10×25
㉑	内六角螺钉 Hexagon Socket Head Bolt	2	M8×45
㉒	内螺纹圆柱销 Dowel Pin With Female Thread	6	φ13×40
㉔	缓冲块 Stopper	2	φ22×15
㉕	下滑板 Plate	R/L1	铜合金 Bronze
㉖	弹簧挡板 Spring Guide Plate	2	45
㉗	内六角螺钉 Hexagon Socket Head Bolt	8	M16×40
㉘	挡板 Spring Plate	2	45



行程 Travel S	加工力 Working Force kN(tonf)		弹簧力 Spring Force N(kgF)		滑块重量 Slider Weight kg	总重量 Total Weight kg	代号 Catalog No.	(W)	(θ)	SANKYO 代号对照 Catalog No.
	标准加工力 (100万回) Standard Working Force (one million strokes)	允许加工力 (30万回) Allowable Working Force (300,000 strokes)	初压 Initial Load	终压 Final Load						
38.6	245.0 (25.0)	490.0 (50.0)	1634.4 (166.6)	9806.4 (999.4)	77.7	191.1	KMAC	400	00	SUWB



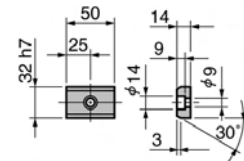
Order

Catalog No. **KMAC** (W) - (θ)
400 - 00

■ 键详图 Key Specification



Option



KMAC
400

KMAC400-05

Arrow View

Detail of Driver Backup

Cam Diagram

■ 零部件表
Table of Components

代号 No.	名称 Description	数量 Qty	材料和备注 Material and Remark
①	滑动块 Cam Slider	1	HT300
②	驱动块 Cam Driver	1	HT300
③	上滑板B Base Plate B	2	铜合金 Bronze
④	底座 Cam Holder	1	HT300
⑤	弹簧滑座 Spring Guide Block	2	QT450
⑥	弹簧销 Spring Guide Pin	2	45
⑦	上滑板A Base Plate A	R/L1	铜合金 Bronze
⑧	上滑板C Base Plate C	1	铜合金 Bronze
⑩	凸V型 Cam Slide Guide	1	铜合金 Bronze
⑪	强制拉回 Positive Return Follower	2	45
⑫	安全挡板 Safety Plate	2	45
⑬	键A Key A	3	45
⑭	键B Key B	3	45
⑮	螺旋弹簧 Coil Spring	2	TM50-225
⑯	内六角螺钉 Hexagon Socket Head Bolt	11	M16×45
⑰	内六角螺钉 Hexagon Socket Head Bolt	4	M20×50
⑱	内六角螺钉 Hexagon Socket Head Bolt	4	M12×35
⑲	内六角螺钉 Hexagon Socket Head Bolt	6	M8×15
⑳	内六角螺钉 Hexagon Socket Head Bolt	8	M10×25
㉑	内六角螺钉 Hexagon Socket Head Bolt	2	M8×45
㉒	内螺纹圆柱销 Dowel Pin With Female Thread	6	φ13×40
㉓	缓冲块 Stopper	2	φ22×15
㉔	下滑板 Plate	R/L1	铜合金 Bronze
㉕	弹簧挡板 Spring Guide Plate	2	45
㉖	内六角螺钉 Hexagon Socket Head Bolt	8	M16×40
㉗	挡板 Spring Plate	2	45

行程 Travel S	加工力 Working Force kN(tonf)		弹簧力 Spring Force N(kgF)		滑重量 Slider Weight kg	总重量 Total Weight kg	代号 Catalog No.	(W)	(θ)	SANKYO 代号对照 Catalog No.
	标准加工力 (100万回) Standard Working Force (one million strokes)	允许加工力 (30万回) Allowable Working Force (300,000 strokes)	初压 Initial Load	终压 Final Load						
42.6	245.0 (25.0)	490.0 (50.0)	1634.4 (166.6)	9806.4 (999.4)	77.8	189.3	KMAC	400	05	SUWB



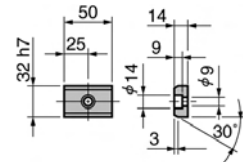
Order

Catalog No. (W) - (θ)
KMAC 400 - 05



Option

■ 键详图 Key Specification



KMAC400-10

■ 零部件表 Table of Components

代号 No.	名称 Description	数量 Qty	材料和备注 Material and Remark
①	滑动块 Cam Slider	1	HT300
②	驱动块 Cam Driver	1	HT300
③	上滑板B Base Plate B	2	铜合金 Bronze
④	底座 Cam Holder	1	HT300
⑤	弹簧滑座 Spring Guide Block	2	QT450
⑥	弹簧销 Spring Guide Pin	2	45
⑦	上滑板A Base Plate A	R/L1	铜合金 Bronze
⑧	上滑板C Base Plate C	1	铜合金 Bronze
⑩	凸V型 Cam Slide Guide	1	铜合金 Bronze
⑪	强制拉回 Positive Return Follower	2	45
⑫	安全挡板 Safety Plate	2	45
⑬	键A Key A	3	45
⑭	键B Key B	3	45
⑮	螺旋弹簧 Coil Spring	2	TM50-225
⑯	内六角螺钉 Hexagon Socket Head Bolt	11	M16×45
⑰	内六角螺钉 Hexagon Socket Head Bolt	4	M20×50
⑱	内六角螺钉 Hexagon Socket Head Bolt	4	M12×35
⑲	内六角螺钉 Hexagon Socket Head Bolt	6	M8×15
⑳	内六角螺钉 Hexagon Socket Head Bolt	8	M10×25
㉑	内六角螺钉 Hexagon Socket Head Bolt	2	M8×45
㉒	内六角螺钉 Hexagon Socket Head Bolt	2	M8×45
㉓	内螺纹圆柱销 Dowel Pin With Female Thread	6	φ13×40
㉔	缓冲块 Stopper	2	φ22×15
㉕	下滑板 Plate	R/L1	铜合金 Bronze
㉖	弹簧挡板 Spring Guide Plate	2	45
㉗	内六角螺钉 Hexagon Socket Head Bolt	8	M16×40
㉘	挡板 Spring Plate	2	45

行程 Travel S	加工力 Working Force kN(tonf)		弹簧力 Spring Force N(kgpf)		滑块重量 Slider Weight kg	总重量 Total Weight kg	代号 Catalog No.	(W)	(θ)	SANKYO 代号对照 Catalog No.
	标准加工力 (100万回) Standard Working Force (one million strokes)	允许加工力 (30万回) Allowable Working Force (300,000 strokes)	初压 Initial Load	终压 Final Load						
46.7	245.0 (25.0)	490.0 (50.0)	1634.4 (166.6)	9806.4 (999.4)	77.8	188.0	KMAC	400	10	SUWB



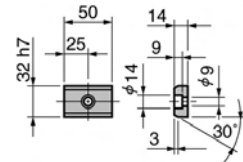
Order

Catalog No. (W) - (θ)
KMAC 400 - 10



Option

■ 键详图 Key Specification



KMAC
400

KMAC400-15

Cam Diagram

Arrow View

Detail of Driver Backup

■ 零部件表
Table of Components

代号 No.	名称 Description	数量 Qty	材料和备注 Material and Remark
①	滑动块 Cam Slider	1	HT300
②	驱动块 Cam Driver	1	HT300
③	上滑板B Base Plate B	2	铜合金 Bronze
④	底座 Cam Holder	1	HT300
⑤	弹簧滑座 Spring Guide Block	2	QT450
⑥	弹簧销 Spring Guide Pin	2	45
⑦	上滑板A Base Plate A	R/L1	铜合金 Bronze
⑧	上滑板C Base Plate C	1	铜合金 Bronze
⑩	凸V型 Cam Slide Guide	1	铜合金 Bronze
⑪	强制拉回 Positive Return Follower	2	45
⑫	安全挡板 Safety Plate	2	45
⑬	键A Key A	3	45
⑭	键B Key B	3	45
⑮	螺旋弹簧 Coil Spring	2	TM50-225
⑯	内六角螺钉 Hexagon Socket Head Bolt	11	M16×45
⑰	内六角螺钉 Hexagon Socket Head Bolt	4	M20×50
⑱	内六角螺钉 Hexagon Socket Head Bolt	4	M12×35
⑲	内六角螺钉 Hexagon Socket Head Bolt	6	M8×15
⑳	内六角螺钉 Hexagon Socket Head Bolt	8	M10×25
㉑	内六角螺钉 Hexagon Socket Head Bolt	2	M8×45
㉒	内六角螺钉 Hexagon Socket Head Bolt	2	M8×45
㉓	内螺纹圆柱销 Dowel Pin With Female Thread	6	φ13×40
㉔	缓冲块 Stopper	2	φ22×15
㉕	下滑板 Plate	R/L1	铜合金 Bronze
㉖	弹簧挡板 Spring Guide Plate	2	45
㉗	内六角螺钉 Hexagon Socket Head Bolt	8	M16×40
㉘	挡板 Spring Plate	2	45

行程 Travel S	加工力 Working Force kN(tonf)		弹簧力 Spring Force N(kgpf)		滑块重量 Slider Weight kg	总重量 Total Weight kg	代号 Catalog No.	(W)	(θ)	SANKYO 代号对照 Catalog No.
	标准加工力 (100万回) Standard Working Force (one million strokes)	允许加工力 (30万回) Allowable Working Force (300,000 strokes)	初压 Initial Load	终压 Final Load						
50.9	245.0 (25.0)	490.0 (50.0)	1634.4 (166.6)	9806.4 (999.4)	77.8	186.1	KMAC	400	15	SUWB



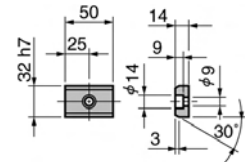
Order

Catalog No. **(W)** - **(θ)**
KMAC 400 - 15



Option

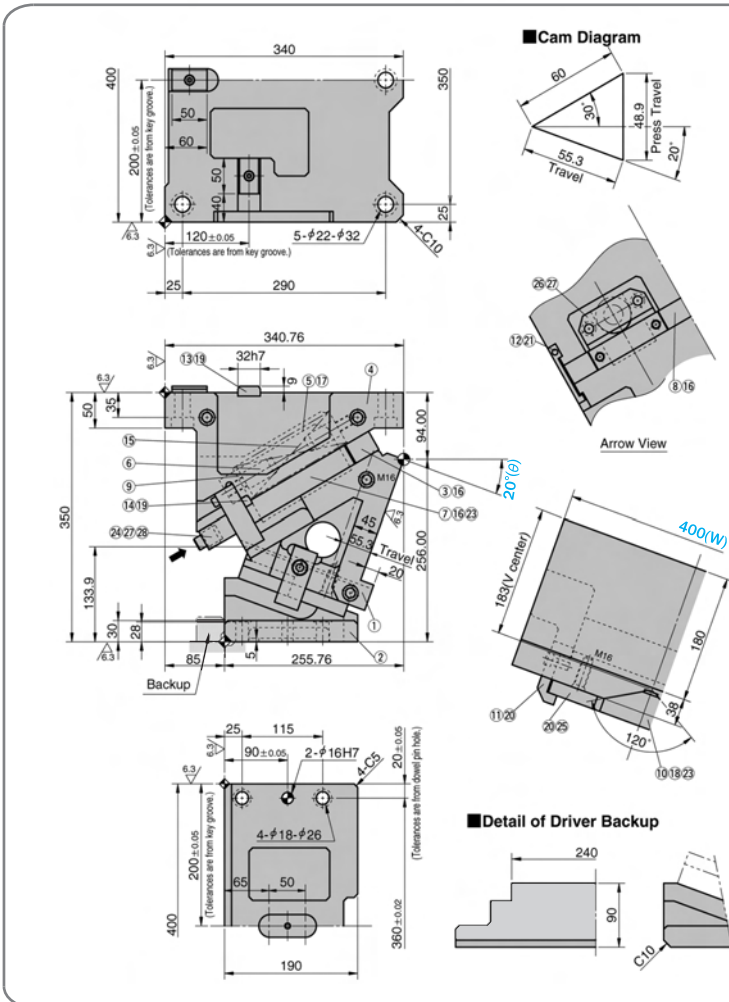
■ 键详图 Key Specification



KMAC400-20

■ 零部件表 Table of Components

代号 No.	名称 Description	数量 Qty	材料和备注 Material and Remark
①	滑动块 Cam Slider	1	HT300
②	驱动块 Cam Driver	1	HT300
③	上滑板B Base Plate B	2	铜合金 Bronze
④	底座 Cam Holder	1	HT300
⑤	弹簧滑座 Spring Guide Block	2	QT450
⑥	弹簧销 Spring Guide Pin	2	45
⑦	上滑板A Base Plate A	R/L1	铜合金 Bronze
⑧	上滑板C Base Plate C	1	铜合金 Bronze
⑩	凸V型 Cam Slide Guide	1	铜合金 Bronze
⑪	强制拉回 Positive Return Follower	2	45
⑫	安全挡板 Safety Plate	2	45
⑬	键A Key A	3	45
⑭	键B Key B	3	45
⑮	螺旋弹簧 Coil Spring	2	TM50-225
⑯	内六角螺钉 Hexagon Socket Head Bolt	11	M16×45
⑰	内六角螺钉 Hexagon Socket Head Bolt	4	M20×50
⑱	内六角螺钉 Hexagon Socket Head Bolt	4	M12×35
⑲	内六角螺钉 Hexagon Socket Head Bolt	6	M8×15
⑳	内六角螺钉 Hexagon Socket Head Bolt	8	M10×25
㉑	内六角螺钉 Hexagon Socket Head Bolt	2	M8×45
㉒	内螺纹圆柱销 Dowel Pin With Female Thread	6	φ13×40
㉔	缓冲块 Stopper	2	φ22×15
㉕	下滑板 Plate	R/L1	铜合金 Bronze
㉖	弹簧挡板 Spring Guide Plate	2	45
㉗	内六角螺钉 Hexagon Socket Head Bolt	8	M16×40
㉘	挡板 Spring Plate	2	45



行程 Travel S	加工力 Working Force kN(tonf)		弹簧力 Spring Force N(kgF)		滑块重量 Slider Weight kg	总重量 Total Weight kg	代号 Catalog No.	(W)	(θ)	SANKYO 代号对照 Catalog No.
	标准加工力 (100万回) Standard Working Force (one million strokes)	允许加工力 (30万回) Allowable Working Force (300,000 strokes)	初压 Initial Load	终压 Final Load						
55.3	245.0 (25.0)	490.0 (50.0)	1634.4 (166.6)	9806.4 (999.4)	77.8	185.3	KMAC	400	20	SUWB



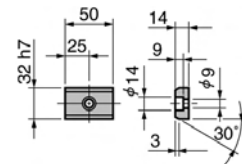
Order

Catalog No. **(W)** - **(θ)**
KMAC 400 - 20



Option

■ 键详图 Key Specification



KMAC
400

KMAC400-30

■Cam Diagram

■Detail of Driver Backup

■ 零部件表
Table of Components

代号 No.	名称 Description	数量 Qty	材料和备注 Material and Remark
①	滑动块 Cam Slider	1	HT300
②	驱动块 Cam Driver	1	HT300
③	上滑板B Base Plate B	2	铜合金 Bronze
④	底座 Cam Holder	1	HT300
⑤	弹簧滑座 Spring Guide Block	2	QT450
⑥	弹簧销 Spring Guide Pin	2	45
⑦	上滑板A Base Plate A	R/L1	铜合金 Bronze
⑧	上滑板C Base Plate C	1	铜合金 Bronze
⑩	凸V型 Cam Slide Guide	1	铜合金 Bronze
⑪	强制拉回 Positive Return Follower	2	45
⑫	安全挡板 Safety Plate	2	45
⑬	键A Key A	3	45
⑭	键B Key B	3	45
⑮	螺旋弹簧 Coil Spring	2	TM50-225
⑯	内六角螺钉 Hexagon Socket Head Bolt	11	M16×45
⑰	内六角螺钉 Hexagon Socket Head Bolt	4	M20×50
⑱	内六角螺钉 Hexagon Socket Head Bolt	4	M12×35
⑲	内六角螺钉 Hexagon Socket Head Bolt	6	M8×15
⑳	内六角螺钉 Hexagon Socket Head Bolt	8	M10×25
㉑	内六角螺钉 Hexagon Socket Head Bolt	2	M8×45
㉒	内螺纹圆柱销 Dowel Pin With Female Thread	6	φ13×40
㉓	缓冲块 Stopper	2	φ22×15
㉔	下滑板 Plate	R/L1	铜合金 Bronze
㉕	弹簧挡板 Spring Guide Plate	2	45
㉖	内六角螺钉 Hexagon Socket Head Bolt	8	M16×40
㉗	挡板 Spring Plate	2	45

行程 Travel S	加工力 Working Force kN(tonf)		弹簧力 Spring Force N(kgpf)		滑块重量 Slider Weight kg	总重量 Total Weight kg	代号 Catalog No.	(W)	(θ)	SANKYO 代号对照 Catalog No.
	标准加工力 (100万回) Standard Working Force (one million strokes)	允许加工力 (30万回) Allowable Working Force (300,000 strokes)	初压 Initial Load	终压 Final Load						
65.1	245.0 (25.0)	490.0 (50.0)	1634.4 (166.6)	9806.4 (999.4)	77.8	185.8	KMAC	400	30	SUWB



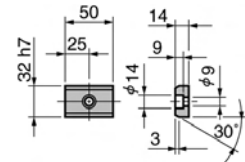
Order

Catalog No. (W) - (θ)
KMAC 400 - 30



Option

■ 键详图 Key Specification



KMAC400-40

Cam Diagram

Detail of Driver Backup

■ 零部件表
Table of Components

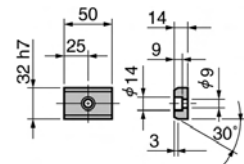
代号 No.	名称 Description	数量 Qty	材料和备注 Material and Remark
①	滑动块 Cam Slider	1	HT300
②	驱动块 Cam Driver	1	HT300
③	上滑板B Base Plate B	2	铜合金 Bronze
④	底座 Cam Holder	1	HT300
⑤	弹簧滑座 Spring Guide Block	2	QT450
⑥	弹簧销 Spring Guide Pin	2	45
⑦	上滑板A Base Plate A	R/L1	铜合金 Bronze
⑧	上滑板C Base Plate C	1	铜合金 Bronze
⑩	凸V型 Cam Slide Guide	1	铜合金 Bronze
⑪	强制拉回 Positive Return Follower	2	45
⑫	安全挡板 Safety Plate	2	45
⑬	键A Key A	3	45
⑭	键B Key B	3	45
⑮	螺旋弹簧 Coil Spring	2	TM50-225
⑯	内六角螺钉 Hexagon Socket Head Bolt	11	M16×45
⑰	内六角螺钉 Hexagon Socket Head Bolt	4	M20×50
⑱	内六角螺钉 Hexagon Socket Head Bolt	4	M12×35
⑲	内六角螺钉 Hexagon Socket Head Bolt	6	M8×15
⑳	内六角螺钉 Hexagon Socket Head Bolt	8	M10×25
㉑	内六角螺钉 Hexagon Socket Head Bolt	2	M8×45
㉒	内六角螺钉 Hexagon Socket Head Bolt	8	M16×40
㉓	内螺纹圆柱销 Dowel Pin With Female Thread	6	φ13×40
㉔	缓冲块 Stopper	2	φ22×15
㉕	下滑板 Plate	R/L1	铜合金 Bronze
㉖	弹簧挡板 Spring Guide Plate	2	45
㉗	内六角螺钉 Hexagon Socket Head Bolt	8	M16×40
㉘	挡板 Spring Plate	2	45

行程 Travel S	加工力 Working Force kN(tonf)		弹簧力 Spring Force N(kgpf)		滑块重量 Slider Weight kg	总重量 Total Weight kg	代号 Catalog No.	(W)	(θ)	SANKYO 代号对照 Catalog No.
	标准加工力 (100万回) Standard Working Force (one million strokes)	允许加工力 (30万回) Allowable Working Force (300,000 strokes)	初压 Initial Load	终压 Final Load						
77.1	245.0 (25.0)	490.0 (50.0)	1634.4 (166.6)	9806.4 (999.4)	77.8	191.9	KMAC	400	40	SUWB

Order Catalog No. (W) - (θ)
KMAC 400 - 40

Option

■ 键详图 Key Specification



KMAC
400

KMAC400-50

Cam Diagram

60
83.3 Travel
50°
71.5 Press Travel

Detail of Driver Backup

200
150
C10

Arrow View

50°(θ)

零部件表
Table of Components

代号 No.	名称 Description	数量 Qty	材料和备注 Material and Remark
①	滑动块 Cam Slider	1	HT300
②	驱动块 Cam Driver	1	HT300
③	上滑板B Base Plate B	2	铜合金 Bronze
④	底座 Cam Holder	1	HT300
⑤	弹簧滑座 Spring Guide Block	2	QT450
⑥	弹簧销 Spring Guide Pin	2	45
⑦	上滑板A Base Plate A	R/L1	铜合金 Bronze
⑧	上滑板C Base Plate C	1	铜合金 Bronze
⑩	凸V型 Cam Slide Guide	1	铜合金 Bronze
⑪	强制拉回 Positive Return Follower	2	45
⑫	安全挡板 Safety Plate	2	45
⑬	键A Key A	3	45
⑭	键B Key B	3	45
⑮	螺旋弹簧 Coil Spring	2	TM50-225
⑯	内六角螺钉 Hexagon Socket Head Bolt	11	M16×45
⑰	内六角螺钉 Hexagon Socket Head Bolt	4	M20×50
⑱	内六角螺钉 Hexagon Socket Head Bolt	4	M12×35
⑲	内六角螺钉 Hexagon Socket Head Bolt	6	M8×15
⑳	内六角螺钉 Hexagon Socket Head Bolt	8	M10×25
㉑	内六角螺钉 Hexagon Socket Head Bolt	2	M8×45
㉒	内螺纹圆柱销 Dowel Pin With Female Thread	6	φ13×40
㉔	缓冲块 Stopper	2	φ22×15
㉕	下滑板 Plate	R/L1	铜合金 Bronze
㉖	弹簧挡板 Spring Guide Plate	2	45
㉗	内六角螺钉 Hexagon Socket Head Bolt	8	M16×40
㉘	挡板 Spring Plate	2	45

行程 Travel S	加工力 Working Force kN(tonf)		弹簧力 Spring Force N(kgpf)		滑块重量 Slider Weight kg	总重量 Total Weight kg	代号 Catalog No.	(W)	(θ)	SANKYO 代号对照 Catalog No.
	标准加工力 (100万回) Standard Working Force (one million strokes)	允许加工力 (30万回) Allowable Working Force (300,000 strokes)	初压 Initial Load	终压 Final Load						
93.3	245.0 (25.0)	490.0 (50.0)	1634.4 (166.6)	9806.4 (999.4)	77.8	191.9	KMAC	400	50	SUWB



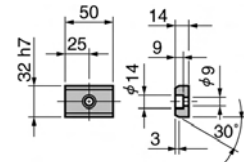
Order

Catalog No. (W) - (θ)
KMAC 400 - 50



Option

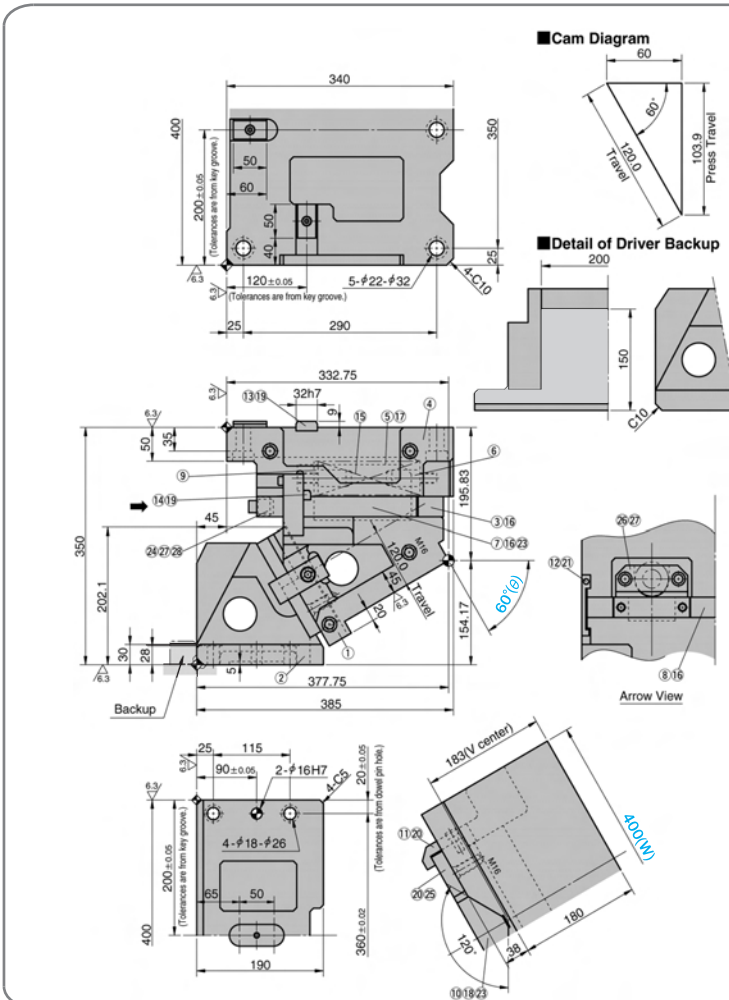
键详图 Key Specification



KMAC400-60

■ 零部件表 Table of Components

代号 No.	名称 Description	数量 Qty	材料和备注 Material and Remark
①	滑动块 Cam Slider	1	HT300
②	驱动块 Cam Driver	1	HT300
③	上滑板B Base Plate B	2	铜合金 Bronze
④	底座 Cam Holder	1	HT300
⑤	弹簧滑座 Spring Guide Block	2	QT450
⑥	弹簧销 Spring Guide Pin	2	45
⑦	上滑板A Base Plate A	R/L1	铜合金 Bronze
⑧	上滑板C Base Plate C	1	铜合金 Bronze
⑩	凸V型 Cam Slide Guide	1	铜合金 Bronze
⑪	强制拉回 Positive Return Follower	2	45
⑫	安全挡板 Safety Plate	2	45
⑬	键A Key A	3	45
⑭	键B Key B	3	45
⑮	螺旋弹簧 Coil Spring	2	TM50-225
⑯	内六角螺钉 Hexagon Socket Head Bolt	11	M16×45
⑰	内六角螺钉 Hexagon Socket Head Bolt	4	M20×50
⑱	内六角螺钉 Hexagon Socket Head Bolt	4	M12×35
⑲	内六角螺钉 Hexagon Socket Head Bolt	6	M8×15
⑳	内六角螺钉 Hexagon Socket Head Bolt	8	M10×25
㉑	内六角螺钉 Hexagon Socket Head Bolt	2	M8×45
㉒	内螺纹圆柱销 Dowel Pin With Female Thread	6	φ13×40
㉓	缓冲块 Stopper	2	φ22×15
㉔	下滑板 Plate	R/L1	铜合金 Bronze
㉕	弹簧挡板 Spring Guide Plate	2	45
㉖	内六角螺钉 Hexagon Socket Head Bolt	8	M16×40
㉗	挡板 Spring Plate	2	45



行程 Travel S	加工力 Working Force kN(tonf)		弹簧力 Spring Force N(kgf)		滑块重量 Slider Weight kg	总重量 Total Weight kg	代号 Catalog No.	(W)	(θ)	SANKYO 代号对照 Catalog No.
	标准加工力 (100万回) Standard Working Force (one million strokes)	允许加工力 (30万回) Allowable Working Force (300,000 strokes)	初压 Initial Load	终压 Final Load						
120.0	245.0 (25.0)	490.0 (50.0)	1634.4 (166.6)	9806.4 (999.4)	82.9	201.1	KMAC	400	60	SUWB



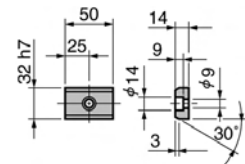
Order

Catalog No. **KMAC** (W) - (θ) **400 - 60**



Option

■ 键详图 Key Specification



KMAC
400

KMAC500-00

Technical drawings showing dimensions and tolerances for the KMAC500-00 cam unit. Key dimensions include overall width (340), height (500), and travel (38.6). Tolerances are specified for key grooves and lower pin holes.

■ 零部件表 Table of Components

代号 No.	名称 Description	数量 Qty	材料和备注 Material and Remark
①	滑动块 Cam Slider	1	HT300
②	驱动块 Cam Driver	1	HT300
③	上滑板B Base Plate B	2	铜合金 Bronze
④	底座 Cam Holder	1	HT300
⑤	弹簧滑座 Spring Guide Block	3	QT450
⑥	弹簧销 Spring Guide Pin	3	45
⑦	上滑板A Base Plate A	R/L1	铜合金 Bronze
⑧	上滑板C Base Plate C	2	铜合金 Bronze
⑩	凸V型 Cam Slide Guide	1	铜合金 Bronze
⑪	强制拉回 Positive Return Follower	2	45
⑫	安全挡板 Safety Plate	2	45
⑬	键A Key A	3	45
⑭	键B Key B	4	45
⑮	螺旋弹簧 Coil Spring	3	TM50-225
⑯	内六角螺钉 Hexagon Socket Head Bolt	14	M16×45
⑰	内六角螺钉 Hexagon Socket Head Bolt	6	M20×50
⑱	内六角螺钉 Hexagon Socket Head Bolt	4	M12×35
⑲	内六角螺钉 Hexagon Socket Head Bolt	7	M8×15
⑳	内六角螺钉 Hexagon Socket Head Bolt	8	M10×25
㉑	内六角螺钉 Hexagon Socket Head Bolt	2	M8×45
㉒	内六角螺钉 Hexagon Socket Head Bolt	6	φ13×40
㉓	缓冲块 Stopper	3	φ22×15
㉔	下滑板 Plate	R/L1	铜合金 Bronze
㉕	弹簧挡板 Spring Guide Plate	3	45
㉖	内六角螺钉 Hexagon Socket Head Bolt	12	M12×40
㉗	挡板 Spring Plate	3	45

行程 Travel S	加工力 Working Force kN(tonf)		弹簧力 Spring Force N(kgpf)		滑块重量 Slider Weight kg	总重量 Total Weight kg	代号 Catalog No.	(W)	(θ)	SANKYO 代号对照 Catalog No.
	标准加工力 (100万回) Standard Working Force (one million strokes)	允许加工力 (30万回) Allowable Working Force (300,000 strokes)	初压 Initial Load	终压 Final Load						
38.6	313.6 (32.0)	627.2 (64.0)	2451.6 (249.8)	14709.6 (1499.0)	98.6	222.3	KMAC	500	00	SUWB



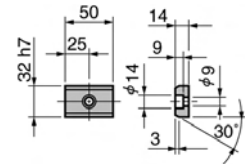
Order

Catalog No. (W) - (θ)
KMAC 500 - 00



Option

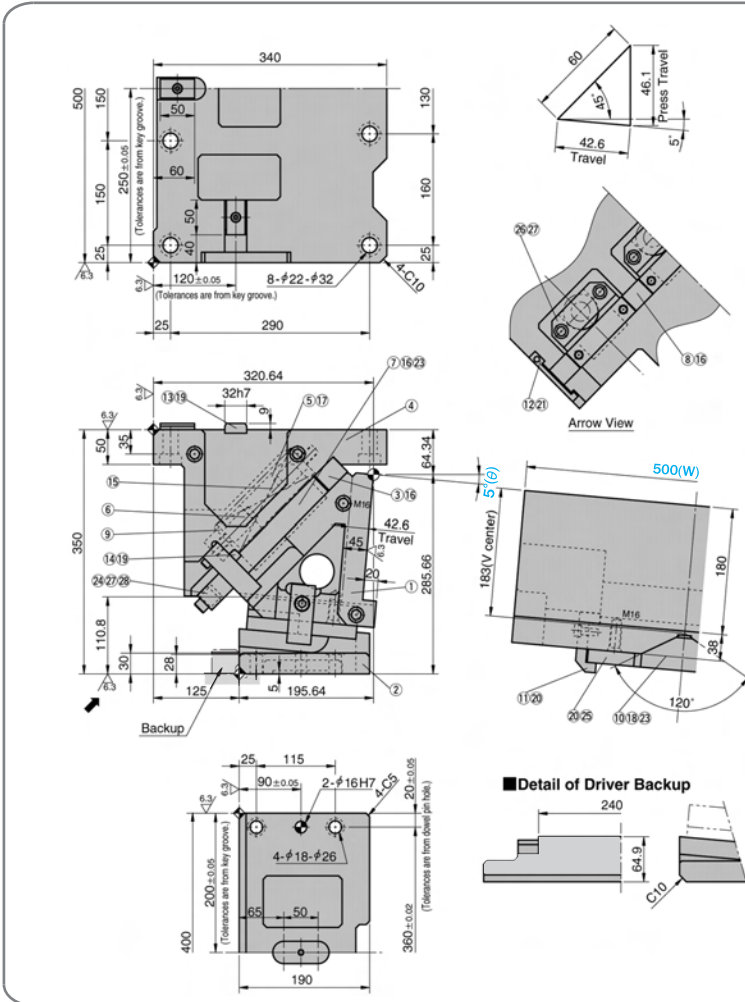
■ 键详图 Key Specification



KMAC500-05

■ 零部件表 Table of Components

代号 No.	名称 Description	数量 Qty	材料和备注 Material and Remark
①	滑动块 Cam Slider	1	HT300
②	驱动块 Cam Driver	1	HT300
③	上滑板B Base Plate B	2	铜合金 Bronze
④	底座 Cam Holder	1	HT300
⑤	弹簧滑座 Spring Guide Block	3	QT450
⑥	弹簧销 Spring Guide Pin	3	45
⑦	上滑板A Base Plate A	R/L1	铜合金 Bronze
⑧	上滑板C Base Plate C	2	铜合金 Bronze
⑩	凸V型 Cam Slide Guide	1	铜合金 Bronze
⑪	强制拉回 Positive Return Follower	2	45
⑫	安全挡板 Safety Plate	2	45
⑬	键A Key A	3	45
⑭	键B Key B	4	45
⑮	螺旋弹簧 Coil Spring	3	TM50-225
⑯	内六角螺钉 Hexagon Socket Head Bolt	14	M16×45
⑰	内六角螺钉 Hexagon Socket Head Bolt	6	M20×50
⑱	内六角螺钉 Hexagon Socket Head Bolt	4	M12×35
⑲	内六角螺钉 Hexagon Socket Head Bolt	7	M8×15
⑳	内六角螺钉 Hexagon Socket Head Bolt	8	M10×25
㉑	内六角螺钉 Hexagon Socket Head Bolt	2	M8×45
㉒	内螺纹圆柱销 Dowel Pin With Female Thread	6	φ13×40
㉔	缓冲块 Stopper	3	φ22×15
㉕	下滑板 Plate	R/L1	铜合金 Bronze
㉖	弹簧挡板 Spring Guide Plate	3	45
㉗	内六角螺钉 Hexagon Socket Head Bolt	12	M12×40
㉘	挡板 Spring Plate	3	45



行程 Travel S	加工力 Working Force kN(tonf)		弹簧力 Spring Force N(kgpf)		滑块重量 Slider Weight kg	总重量 Total Weight kg	代号 Catalog No.	(W)	(θ)	SANKYO 代号对照 Catalog No.
	标准加工力 (100万回) Standard Working Force (one million strokes)	允许加工力 (30万回) Allowable Working Force (300,000 strokes)	初压 Initial Load	终压 Final Load						
42.6	313.6 (32.0)	627.2 (64.0)	2451.6 (249.8)	14709.6 (1499.0)	98.6	220.4	KMAC	500	05	SUWB

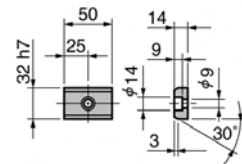


Order

 Catalog No. **(W) - (θ)**
KMAC 500 - 05


Option

■ 键详图 Key Specification


**KMAC
500**

KMAC500-10

■ Cam Diagram

Arrow View

■ Detail of Driver Backup

■ 零部件表
Table of Components

代号 No.	名称 Description	数量 Qty	材料和备注 Material and Remark
①	滑动块 Cam Slider	1	HT300
②	驱动块 Cam Driver	1	HT300
③	上滑板B Base Plate B	2	铜合金 Bronze
④	底座 Cam Holder	1	HT300
⑤	弹簧滑座 Spring Guide Block	3	QT450
⑥	弹簧销 Spring Guide Pin	3	45
⑦	上滑板A Base Plate A	R/L1	铜合金 Bronze
⑧	上滑板C Base Plate C	2	铜合金 Bronze
⑩	凸V型 Cam Slide Guide	1	铜合金 Bronze
⑪	强制拉回 Positive Return Follower	2	45
⑫	安全挡板 Safety Plate	2	45
⑬	键A Key A	3	45
⑭	键B Key B	4	45
⑮	螺旋弹簧 Coil Spring	3	TM50-225
⑯	内六角螺钉 Hexagon Socket Head Bolt	14	M16×45
⑰	内六角螺钉 Hexagon Socket Head Bolt	6	M20×50
⑱	内六角螺钉 Hexagon Socket Head Bolt	4	M12×35
⑲	内六角螺钉 Hexagon Socket Head Bolt	7	M8×15
⑳	内六角螺钉 Hexagon Socket Head Bolt	8	M10×25
㉑	内六角螺钉 Hexagon Socket Head Bolt	2	M8×45
㉒	内螺纹圆柱销 Dowel Pin With Female Thread	6	φ13×40
㉔	缓冲块 Stopper	3	φ22×15
㉕	下滑板 Plate	R/L1	铜合金 Bronze
㉖	弹簧挡板 Spring Guide Plate	3	45
㉗	内六角螺钉 Hexagon Socket Head Bolt	12	M12×40
㉘	挡板 Spring Plate	3	45

行程 Travel S	加工力 Working Force kN(tonf)		弹簧力 Spring Force N(kgF)		滑块重量 Slider Weight kg	总重量 Total Weight kg	代号 Catalog No.	(W)	(θ)	SANKYO 代号对照 Catalog No.
	标准加工力 (100万回) Standard Working Force (one million strokes)	允许加工力 (30万回) Allowable Working Force (300,000 strokes)	初压 Initial Load	终压 Final Load						
46.7	313.6 (32.0)	627.2 (64.0)	2451.6 (249.8)	14709.6 (1499.0)	98.6	218.8	KMAC	500	10	SUWB



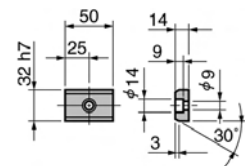
Order

Catalog No. **KMAC** (W) - (θ) **500 - 10**



Option

■ 键详图 Key Specification



KMAC500-15

■ 零部件表
Table of Components

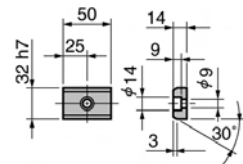
代号 No.	名称 Description	数量 Qty	材料和备注 Material and Remark
①	滑动块 Cam Slider	1	HT300
②	驱动块 Cam Driver	1	HT300
③	上滑板B Base Plate B	2	铜合金 Bronze
④	底座 Cam Holder	1	HT300
⑤	弹簧滑座 Spring Guide Block	3	QT450
⑥	弹簧销 Spring Guide Pin	3	45
⑦	上滑板A Base Plate A	R/L1	铜合金 Bronze
⑧	上滑板C Base Plate C	2	铜合金 Bronze
⑩	凸V型 Cam Slide Guide	1	铜合金 Bronze
⑪	强制拉回 Positive Return Follower	2	45
⑫	安全挡板 Safety Plate	2	45
⑬	键A Key A	3	45
⑭	键B Key B	4	45
⑮	螺旋弹簧 Coil Spring	3	TM50-225
⑯	内六角螺钉 Hexagon Socket Head Bolt	14	M16×45
⑰	内六角螺钉 Hexagon Socket Head Bolt	6	M20×50
⑱	内六角螺钉 Hexagon Socket Head Bolt	4	M12×35
⑲	内六角螺钉 Hexagon Socket Head Bolt	7	M8×15
⑳	内六角螺钉 Hexagon Socket Head Bolt	8	M10×25
㉑	内六角螺钉 Hexagon Socket Head Bolt	2	M8×45
㉒	内六角螺钉 Hexagon Socket Head Bolt	6	φ13×40
㉓	缓冲块 Stopper	3	φ22×15
㉔	下滑板 Plate	R/L1	铜合金 Bronze
㉕	弹簧挡板 Spring Guide Plate	3	45
㉖	内六角螺钉 Hexagon Socket Head Bolt	12	M12×40
㉗	挡板 Spring Plate	3	45

行程 Travel S	加工力 Working Force kN(tonf)		弹簧力 Spring Force N(kgpf)		滑块重量 Slider Weight kg	总重量 Total Weight kg	代号 Catalog No.	(W)	(θ)	SANKYO 代号对照 Catalog No.
	标准加工力 (100万回) Standard Working Force (one million strokes)	允许加工力 (30万回) Allowable Working Force (300,000 strokes)	初压 Initial Load	终压 Final Load						
50.9	313.6 (32.0)	627.2 (64.0)	2451.6 (249.8)	14709.6 (1499.0)	98.6	216.3	KMAC	500	15	SUWB

Order **Catalog No. (W) - (θ)**
KMAC 500 - 15

Option

■ 键详图 Key Specification



KMAC 500

KMAC500-20

Dimensions: 340, 500, 150, 250±0.05, 60, 130, 25, 120±0.05, 8-φ22-φ32, 4-C10, 290, 6.3, 25, 340.76, 1319, 32h7, 5/17, 4, 94.00, 3/16, 1/16, 23, 20, 256.00, 133.9, 30, 28, 85, 174, 255.76, 2, 25, 115, 90±0.05, 2-φ16H7, 20±0.05, 4-φ18-φ26, 200±0.05, 6.3, 400, 6.5, 50, 360±0.02, 190, 240, 90, C10.

■ Cam Diagram

■ Detail of Driver Backup

■ 零部件表
Table of Components

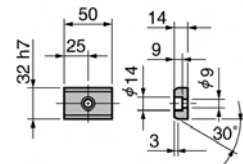
代号 No.	名称 Description	数量 Qty	材料和备注 Material and Remark
①	滑动块 Cam Slider	1	HT300
②	驱动块 Cam Driver	1	HT300
③	上滑板B Base Plate B	2	铜合金 Bronze
④	底座 Cam Holder	1	HT300
⑤	弹簧滑座 Spring Guide Block	3	QT450
⑥	弹簧销 Spring Guide Pin	3	45
⑦	上滑板A Base Plate A	R/L1	铜合金 Bronze
⑧	上滑板C Base Plate C	2	铜合金 Bronze
⑩	凸V型 Cam Slide Guide	1	铜合金 Bronze
⑪	强制拉回 Positive Return Follower	2	45
⑫	安全挡板 Safety Plate	2	45
⑬	键A Key A	3	45
⑭	键B Key B	4	45
⑮	螺旋弹簧 Coil Spring	3	TM50-225
⑯	内六角螺钉 Hexagon Socket Head Bolt	14	M16×45
⑰	内六角螺钉 Hexagon Socket Head Bolt	6	M20×50
⑱	内六角螺钉 Hexagon Socket Head Bolt	4	M12×35
⑲	内六角螺钉 Hexagon Socket Head Bolt	7	M8×15
⑳	内六角螺钉 Hexagon Socket Head Bolt	8	M10×25
㉑	内六角螺钉 Hexagon Socket Head Bolt	2	M8×45
㉒	内六角螺钉 Hexagon Socket Head Bolt	6	φ13×40
㉓	缓冲块 Stopper	3	φ22×15
㉔	下滑板 Plate	R/L1	铜合金 Bronze
㉕	弹簧挡板 Spring Guide Plate	3	45
㉖	内六角螺钉 Hexagon Socket Head Bolt	12	M12×40
㉗	挡板 Spring Plate	3	45

行程 Travel S	加工力 Working Force kN(tonf)		弹簧力 Spring Force N(kgf)		滑块重量 Slider Weight kg	总重量 Total Weight kg	代号 Catalog No.	(W)	(θ)	SANKYO 代号对照 Catalog No.
	标准加工力 (100万回) Standard Working Force (one million strokes)	允许加工力 (30万回) Allowable Working Force (300,000 strokes)	初压 Initial Load	终压 Final Load						
55.3	313.6 (32.0)	627.2 (64.0)	2451.6 (249.8)	14709.6 (1499.0)	98.6	215.1	KMAC	500	20	SUWB

Order Catalog No. (W) - (θ)
KMAC 500 - 20

Option

■ 键详图 Key Specification



KMAC500-30

Cam Diagram

60
30°
65.1 Travel
55.0 Press Travel
20

Arrow View

12.21
6.16

Detail of Driver Backup

200
110
C10

■ 零部件表
Table of Components

代号 No.	名称 Description	数量 Qty	材料和备注 Material and Remark
①	滑动块 Cam Slider	1	HT300
②	驱动块 Cam Driver	1	HT300
③	上滑板B Base Plate B	2	铜合金 Bronze
④	底座 Cam Holder	1	HT300
⑤	弹簧滑座 Spring Guide Block	3	QT450
⑥	弹簧销 Spring Guide Pin	3	45
⑦	上滑板A Base Plate A	R/L1	铜合金 Bronze
⑧	上滑板C Base Plate C	2	铜合金 Bronze
⑩	凸V型 Cam Slide Guide	1	铜合金 Bronze
⑪	强制拉回 Positive Return Follower	2	45
⑫	安全挡板 Safety Plate	2	45
⑬	键A Key A	3	45
⑭	键B Key B	4	45
⑮	螺旋弹簧 Coil Spring	3	TM50-225
⑯	内六角螺钉 Hexagon Socket Head Bolt	14	M16×45
⑰	内六角螺钉 Hexagon Socket Head Bolt	6	M20×50
⑱	内六角螺钉 Hexagon Socket Head Bolt	4	M12×35
⑲	内六角螺钉 Hexagon Socket Head Bolt	7	M8×15
⑳	内六角螺钉 Hexagon Socket Head Bolt	8	M10×25
㉑	内六角螺钉 Hexagon Socket Head Bolt	2	M8×45
㉒	内螺纹圆柱销 Dowel Pin With Female Thread	6	φ13×40
㉓	缓冲块 Stopper	3	φ22×15
㉔	下滑板 Plate	R/L1	铜合金 Bronze
㉕	弹簧挡板 Spring Guide Plate	3	45
㉖	内六角螺钉 Hexagon Socket Head Bolt	12	M12×40
㉗	挡板 Spring Plate	3	45

行程 Travel S	加工力 Working Force kN(tonf)		弹簧力 Spring Force N(kgpf)		滑块重量 Slider Weight kg	总重量 Total Weight kg	代号 Catalog No.	(W)	(θ)	SANKYO 代号对照 Catalog No.
	标准加工力 (100万回) Standard Working Force (one million strokes)	允许加工力 (30万回) Allowable Working Force (300,000 strokes)	初压 Initial Load	终压 Final Load						
65.1	313.6 (32.0)	627.2 (64.0)	2451.6 (249.8)	14709.6 (1499.0)	98.6	216.1	KMAC	500	30	SUWB



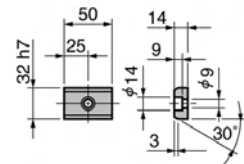
Order

Catalog No. **KMAC** (W) - (θ) **500 - 30**

■ 键详图 Key Specification



Option



KMAC 500

KMAC500-40

Cam Diagram

Detail of Driver Backup

■ 零部件表
Table of Components

代号 No.	名称 Description	数量 Qty	材料和备注 Material and Remark
①	滑动块 Cam Slider	1	HT300
②	驱动块 Cam Driver	1	HT300
③	上滑板B Base Plate B	2	铜合金 Bronze
④	底座 Cam Holder	1	HT300
⑤	弹簧滑座 Spring Guide Block	3	QT450
⑥	弹簧销 Spring Guide Pin	3	45
⑦	上滑板A Base Plate A	R/L1	铜合金 Bronze
⑧	上滑板C Base Plate C	2	铜合金 Bronze
⑩	凸V型 Cam Slide Guide	1	铜合金 Bronze
⑪	强制拉回 Positive Return Follower	2	45
⑫	安全挡板 Safety Plate	2	45
⑬	键A Key A	3	45
⑭	键B Key B	4	45
⑮	螺旋弹簧 Coil Spring	3	TM50-225
⑯	内六角螺钉 Hexagon Socket Head Bolt	14	M16×45
⑰	内六角螺钉 Hexagon Socket Head Bolt	6	M20×50
⑱	内六角螺钉 Hexagon Socket Head Bolt	4	M12×35
⑲	内六角螺钉 Hexagon Socket Head Bolt	7	M8×15
⑳	内六角螺钉 Hexagon Socket Head Bolt	8	M10×25
㉑	内六角螺钉 Hexagon Socket Head Bolt	2	M8×45
㉒	内六角螺钉 Hexagon Socket Head Bolt	6	φ13×40
㉓	缓冲块 Stopper	3	φ22×15
㉔	下滑板 Plate	R/L1	铜合金 Bronze
㉕	弹簧挡板 Spring Guide Plate	3	45
㉖	内六角螺钉 Hexagon Socket Head Bolt	12	M12×40
㉗	挡板 Spring Plate	3	45

行程 Travel S	加工力 Working Force kN(tonf)		弹簧力 Spring Force N(kgf)		滑块重量 Slider Weight kg	总重量 Total Weight kg	代号 Catalog No.	(W)	(θ)	SANKYO 代号对照 Catalog No.
	标准加工力 (100万回) Standard Working Force (one million strokes)	允许加工力 (30万回) Allowable Working Force (300,000 strokes)	初压 Initial Load	终压 Final Load						
77.1	313.6 (32.0)	627.2 (64.0)	2451.6 (249.8)	14709.6 (1499.0)	98.6	220.4	KMAC	500	40	SUWB



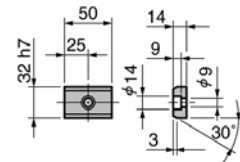
Order

Catalog No. **KMAC** (W) - (θ) **500 - 40**



Option

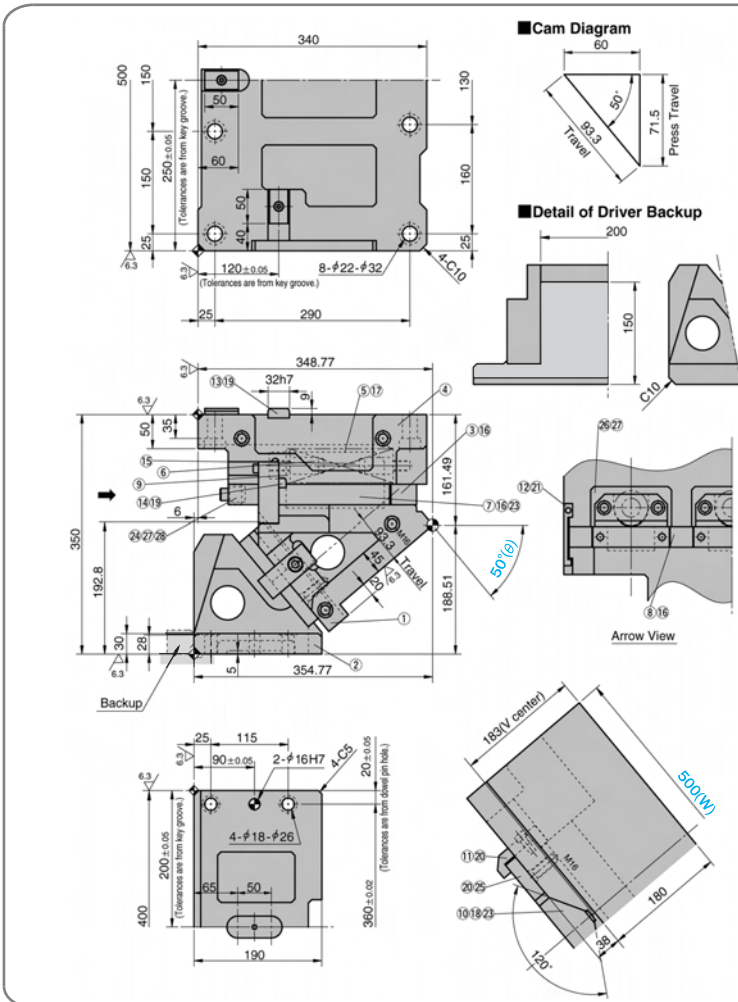
■ 键详图 Key Specification



KMAC500-50

■ 零部件表 Table of Components

代号 No.	名称 Description	数量 Qty	材料和备注 Material and Remark
①	滑动块 Cam Slider	1	HT300
②	驱动块 Cam Driver	1	HT300
③	上滑板B Base Plate B	2	铜合金 Bronze
④	底座 Cam Holder	1	HT300
⑤	弹簧滑座 Spring Guide Block	3	QT450
⑥	弹簧销 Spring Guide Pin	3	45
⑦	上滑板A Base Plate A	R/L1	铜合金 Bronze
⑧	上滑板C Base Plate C	2	铜合金 Bronze
⑩	凸V型 Cam Slide Guide	1	铜合金 Bronze
⑪	强制拉回 Positive Return Follower	2	45
⑫	安全挡板 Safety Plate	2	45
⑬	键A Key A	3	45
⑭	键B Key B	4	45
⑮	螺旋弹簧 Coil Spring	3	TM50-225
⑯	内六角螺钉 Hexagon Socket Head Bolt	14	M16×45
⑰	内六角螺钉 Hexagon Socket Head Bolt	6	M20×50
⑱	内六角螺钉 Hexagon Socket Head Bolt	4	M12×35
⑲	内六角螺钉 Hexagon Socket Head Bolt	7	M8×15
⑳	内六角螺钉 Hexagon Socket Head Bolt	8	M10×25
㉑	内六角螺钉 Hexagon Socket Head Bolt	2	M8×45
㉒	内六角螺钉 Hexagon Socket Head Bolt	12	M12×40
㉓	内螺纹圆柱销 Dowel Pin With Female Thread	6	φ13×40
㉔	缓冲块 Stopper	3	φ22×15
㉕	下滑板 Plate	R/L1	铜合金 Bronze
㉖	弹簧挡板 Spring Guide Plate	3	45
㉗	内六角螺钉 Hexagon Socket Head Bolt	12	M12×40
㉘	挡板 Spring Plate	3	45



行程 Travel S	加工力 Working Force kN(tonf)		弹簧力 Spring Force N(kgF)		滑块重量 Slider Weight kg	总重量 Total Weight kg	代号 Catalog No.	(W)	(θ)	SANKYO 代号对照 Catalog No.
	标准加工力 (100万回) Standard Working Force (one million strokes)	允许加工力 (30万回) Allowable Working Force (300,000 strokes)	初压 Initial Load	终压 Final Load						
93.3	313.6 (32.0)	627.2 (64.0)	2451.6 (249.8)	14709.6 (1499.0)	98.6	220.1	KMAC	500	50	SUWB



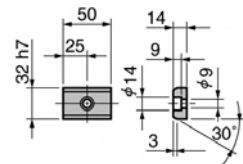
Order

Catalog No. (W) - (θ)
KMAC 500 - 50



Option

■ 键详图 Key Specification



KMAC
500

KMAC500-60

Cam Diagram

Detail of Driver Backup

■ 零部件表
Table of Components

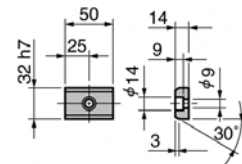
代号 No.	名称 Description	数量 Qty	材料和备注 Material and Remark
①	滑动块 Cam Slider	1	HT300
②	驱动块 Cam Driver	1	HT300
③	上滑板B Base Plate B	2	铜合金 Bronze
④	底座 Cam Holder	1	HT300
⑤	弹簧滑座 Spring Guide Block	3	QT450
⑥	弹簧销 Spring Guide Pin	3	45
⑦	上滑板A Base Plate A	R/L1	铜合金 Bronze
⑧	上滑板C Base Plate C	2	铜合金 Bronze
⑩	凸V型 Cam Slide Guide	1	铜合金 Bronze
⑪	强制拉回 Positive Return Follower	2	45
⑫	安全挡板 Safety Plate	2	45
⑬	键A Key A	3	45
⑭	键B Key B	4	45
⑮	螺旋弹簧 Coil Spring	3	TM50-225
⑯	内六角螺钉 Hexagon Socket Head Bolt	14	M16×45
⑰	内六角螺钉 Hexagon Socket Head Bolt	6	M20×50
⑱	内六角螺钉 Hexagon Socket Head Bolt	4	M12×35
⑲	内六角螺钉 Hexagon Socket Head Bolt	7	M8×15
⑳	内六角螺钉 Hexagon Socket Head Bolt	8	M10×25
㉑	内六角螺钉 Hexagon Socket Head Bolt	2	M8×45
㉒	内螺纹圆柱销 Dowel Pin With Female Thread	6	φ13×40
㉓	缓冲块 Stopper	3	φ22×15
㉔	下滑板 Plate	R/L1	铜合金 Bronze
㉕	弹簧挡板 Spring Guide Plate	3	45
㉖	内六角螺钉 Hexagon Socket Head Bolt	12	M12×40
㉗	挡板 Spring Plate	3	45

行程 Travel S	加工力 Working Force kN(tonf)		弹簧力 Spring Force N(kgpf)		滑块重量 Slider Weight kg	总重量 Total Weight kg	代号 Catalog No.	(W)	(θ)	SANKYO 代号对照 Catalog No.
	标准加工力 (100万回) Standard Working Force (one million strokes)	允许加工力 (30万回) Allowable Working Force (300,000 strokes)	初压 Initial Load	终压 Final Load						
120.0	313.6 (32.0)	627.2 (64.0)	2451.6 (249.8)	14709.6 (1499.0)	104.4	236.5	KMAC	500	60	SUWB

Order Catalog No. (W) - (θ)
KMAC 500 - 60

Option

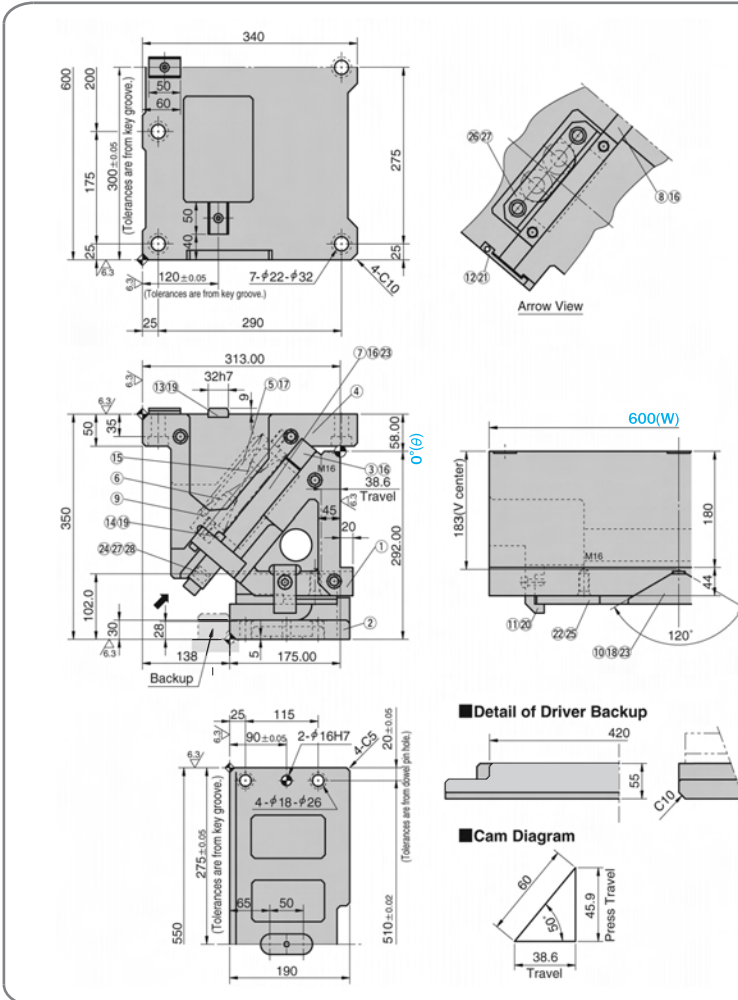
■ 键详图 Key Specification



KMAC600-00

■ 零部件表 Table of Components

代号 No.	名称 Description	数量 Qty	材料和备注 Material and Remark
①	滑动块 Cam Slider	1	HT300
②	驱动块 Cam Driver	1	HT300
③	上滑板B Base Plate B	2	铜合金 Bronze
④	底座 Cam Holder	1	HT300
⑤	弹簧滑座 Spring Guide Block	2	QT450
⑥	弹簧销 Spring Guide Pin	4	45
⑦	上滑板A Base Plate A	R/L1	铜合金 Bronze
⑧	上滑板C Base Plate C	1	铜合金 Bronze
⑩	凸型 Cam Slide Guide	1	铜合金 Bronze
⑪	强制拉回 Positive Return Follower	2	45
⑫	安全挡板 Safety Plate	2	45
⑬	键A Key A	3	45
⑭	键B Key B	3	45
⑮	螺旋弹簧 Coil Spring	4	TM50-225
⑯	内六角螺钉 Hexagon Socket Head Bolt	11	M16×45
⑰	内六角螺钉 Hexagon Socket Head Bolt	8	M20×50
⑱	内六角螺钉 Hexagon Socket Head Bolt	4	M12×35
⑲	内六角螺钉 Hexagon Socket Head Bolt	6	M8×15
⑳	内六角螺钉 Hexagon Socket Head Bolt	2	M10×25
㉑	内六角螺钉 Hexagon Socket Head Bolt	2	M8×45
㉒	内六角螺钉 Hexagon Socket Head Bolt	8	M10×20
㉓	内螺纹圆柱销 Dowel Pin With Female Thread	6	ø13×40
㉔	缓冲块 Stopper	6	ø22×15
㉕	下滑板 Plate	R/L1	铜合金 Bronze
㉖	弹簧挡板 Spring Guide Plate	2	45
㉗	内六角螺钉 Hexagon Socket Head Bolt	8	M16×50
㉘	挡板 Spring Plate	2	45



行程 Travel S	加工力 Working Force kN(tonf)		弹簧力 Spring Force N(kgf)		滑块重量 Slider Weight kg	总重量 Total Weight kg	代号 Catalog No.	(W)	(θ)	SANKYO 代号对照 Catalog No.
	标准加工力 (100万回) Standard Working Force (one million strokes)	允许加工力 (30万回) Allowable Working Force (300,000 strokes)	初压 Initial Load	终压 Final Load						
38.6	392.0 (40.0)	784.0 (79.9)	3268.8 (333.1)	19612.8 (1998.7)	127.0	281.4	KMAC	600	00	SUWB



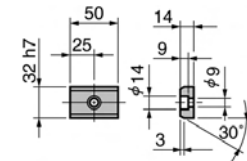
Order

Catalog No. **KMAC** (W) - (θ) **600 - 00**

■ 键详图 Key Specification



Option



KMAC
600

KMAC600-05

Cam Diagram

Arrow View

Detail of Driver Backup

■ 零部件表
Table of Components

代号 No.	名称 Description	数量 Qty	材料和备注 Material and Remark
①	滑动块 Cam Slider	1	HT300
②	驱动块 Cam Driver	1	HT300
③	上滑板B Base Plate B	2	铜合金 Bronze
④	底座 Cam Holder	1	HT300
⑤	弹簧滑座 Spring Guide Block	2	QT450
⑥	弹簧销 Spring Guide Pin	4	45
⑦	上滑板A Base Plate A	R/L1	铜合金 Bronze
⑧	上滑板C Base Plate C	1	铜合金 Bronze
⑩	凸型 Cam Slide Guide	1	铜合金 Bronze
⑪	强制拉回 Positive Return Follower	2	45
⑫	安全挡板 Safety Plate	2	45
⑬	键A Key A	3	45
⑭	键B Key B	3	45
⑮	螺旋弹簧 Coil Spring	4	TM50-225
⑰	内六角螺钉 Hexagon Socket Head Bolt	11	M16×45
⑱	内六角螺钉 Hexagon Socket Head Bolt	8	M20×50
⑲	内六角螺钉 Hexagon Socket Head Bolt	4	M12×35
⑲	内六角螺钉 Hexagon Socket Head Bolt	6	M8×15
⑲	内六角螺钉 Hexagon Socket Head Bolt	2	M10×25
⑲	内六角螺钉 Hexagon Socket Head Bolt	2	M8×45
⑲	内六角螺钉 Hexagon Socket Head Bolt	8	M10×20
⑲	内螺纹圆柱销 Dowel Pin With Female Thread	6	φ13×40
⑲	缓冲块 Stopper	6	φ22×15
⑲	下滑板 Plate	R/L1	铜合金 Bronze
⑲	弹簧挡板 Spring Guide Plate	2	45
⑲	内六角螺钉 Hexagon Socket Head Bolt	8	M16×50
⑲	挡板 Spring Plate	2	45

行程 Travel S	加工力 Working Force kN(tonf)		弹簧力 Spring Force N(kgf)		滑块重量 Slider Weight kg	总重量 Total Weight kg	代号 Catalog No.	(W)	(θ)	SANKYO 代号对照 Catalog No.
	标准加工力 (100万回) Standard Working Force (one million strokes)	允许加工力 (30万回) Allowable Working Force (300,000 strokes)	初压 Initial Load	终压 Final Load						
42.6	392.0 (40.0)	784.0 (79.9)	3268.8 (333.1)	19612.8 (1998.7)	127.0	277.9	KMAC	600	05	SUWB



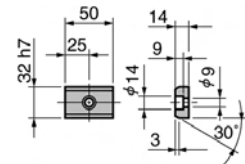
Order

Catalog No. **KMAC** (W) - (θ) **600 - 05**



Option

■ 键详图 Key Specification



KMAC600-10

Dimensions: 600, 200, 175, 300±0.05, 120±0.05, 290, 275, 25, 340, 50, 60, 40, 7-#22-#32, 4-C10, 331.08, 32h7, 5/17, 72.47, 1319, 316, 45, 7/16-23, 24/27-28, 14/19, 20, 277.53, 10°(e), 183(V center), 600(W), 180, 44, 11/20, 10/18-23, 120°, 22/25, 119.1, 30, 28, 115, 216.08, 25, 115, 90±0.05, 2-#16H7, 20±0.05, 275±0.05, 510±0.02, 65, 50, 190.

Cam Diagram

Arrow View

Detail of Driver Backup

■ 零部件表 Table of Components

代号 No.	名称 Description	数量 Qty	材料和备注 Material and Remark
①	滑动块 Cam Slider	1	HT300
②	驱动块 Cam Driver	1	HT300
③	上滑板B Base Plate B	2	铜合金 Bronze
④	底座 Cam Holder	1	HT300
⑤	弹簧滑座 Spring Guide Block	2	QT450
⑥	弹簧销 Spring Guide Pin	4	45
⑦	上滑板A Base Plate A	R/L1	铜合金 Bronze
⑧	上滑板C Base Plate C	1	铜合金 Bronze
⑩	凸V型 Cam Slide Guide	1	铜合金 Bronze
⑪	强制拉回 Positive Return Follower	2	45
⑫	安全挡板 Safety Plate	2	45
⑬	键A Key A	3	45
⑭	键B Key B	3	45
⑮	螺旋弹簧 Coil Spring	4	TM50-225
⑯	内六角螺钉 Hexagon Socket Head Bolt	11	M16×45
⑰	内六角螺钉 Hexagon Socket Head Bolt	8	M20×50
⑱	内六角螺钉 Hexagon Socket Head Bolt	4	M12×35
⑲	内六角螺钉 Hexagon Socket Head Bolt	6	M8×15
⑳	内六角螺钉 Hexagon Socket Head Bolt	2	M10×25
㉑	内六角螺钉 Hexagon Socket Head Bolt	2	M8×45
㉒	内六角螺钉 Hexagon Socket Head Bolt	8	M10×20
㉓	内螺纹圆柱销 Dowel Pin With Female Thread	6	φ13×40
㉔	缓冲块 Stopper	6	φ22×15
㉕	下滑板 Plate	R/L1	铜合金 Bronze
㉖	弹簧挡板 Spring Guide Plate	2	45
㉗	内六角螺钉 Hexagon Socket Head Bolt	8	M16×50
㉘	挡板 Spring Plate	2	45

行程 Travel S	加工力 Working Force kN(tonf)		弹簧力 Spring Force N(kgF)		滑块重量 Slider Weight kg	总重量 Total Weight kg	代号 Catalog No.	(W)	(θ)	SANKYO 代号对照 Catalog No.
	标准加工力 (100万回) Standard Working Force (one million strokes)	允许加工力 (30万回) Allowable Working Force (300,000 strokes)	初压 Initial Load	终压 Final Load						
46.7	392.0 (40.0)	784.0 (79.9)	3268.8 (333.1)	19612.8 (1998.7)	127.0	274.1	KMAC	600	10	SUWB



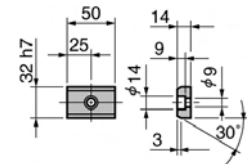
Order

Catalog No. **(W) - (θ)**
KMAC 600 - 10



Option

■ 键详图 Key Specification



KMAC 600

KMAC600-15

600, 200, 340, 275, 175, 25, 6.3, 120±0.05, 7-φ22-φ32, 40, 50, 290, 25, 131.9, 32h7, 5.17, 4, 15, 35, 9, 14.19, 24.27, 28, 126.8, 30, 28, 100, 10, 236.17, 2, 25, 115, 90±0.05, 2-φ16H7, 20±0.05, 4-φ18-φ26, 275±0.05, 65, 50, 510±0.02, 190, 5.10

■ Cam Diagram

80, 35°, 47.5, 50.9, 15°, 12.21, 8.16, Arrow View

183(W, center), 600(W), 180, 44, 120°, 11.20, 22.25, 10.18, 23

■ Detail of Driver Backup

420, 85.6, C10

■ 零部件表
Table of Components

代号 No.	名称 Description	数量 Qty	材料和备注 Material and Remark
①	滑动块 Cam Slider	1	HT300
②	驱动块 Cam Driver	1	HT300
③	上滑板B Base Plate B	2	铜合金 Bronze
④	底座 Cam Holder	1	HT300
⑤	弹簧滑座 Spring Guide Block	2	QT450
⑥	弹簧销 Spring Guide Pin	4	45
⑦	上滑板A Base Plate A	R/L1	铜合金 Bronze
⑧	上滑板C Base Plate C	1	铜合金 Bronze
⑩	凸型 Cam Slide Guide	1	铜合金 Bronze
⑪	强制拉回 Positive Return Follower	2	45
⑫	安全挡板 Safety Plate	2	45
⑬	键A Key A	3	45
⑭	键B Key B	3	45
⑮	螺旋弹簧 Coil Spring	4	TM50-225
⑯	内六角螺钉 Hexagon Socket Head Bolt	11	M16×45
⑰	内六角螺钉 Hexagon Socket Head Bolt	8	M20×50
⑱	内六角螺钉 Hexagon Socket Head Bolt	4	M12×35
⑲	内六角螺钉 Hexagon Socket Head Bolt	6	M8×15
⑳	内六角螺钉 Hexagon Socket Head Bolt	2	M10×25
㉑	内六角螺钉 Hexagon Socket Head Bolt	2	M8×45
㉒	内六角螺钉 Hexagon Socket Head Bolt	8	M10×20
㉓	内螺纹圆柱销 Dowel Pin With Female Thread	6	φ13×40
㉔	缓冲块 Stopper	6	φ22×15
㉕	下滑板 Plate	R/L1	铜合金 Bronze
㉖	弹簧挡板 Spring Guide Plate	2	45
㉗	内六角螺钉 Hexagon Socket Head Bolt	8	M16×50
㉘	挡板 Spring Plate	2	45

行程 Travel S	加工力 Working Force kN(tonf)		弹簧力 Spring Force N(kgpf)		滑块重量 Slider Weight kg	总重量 Total Weight kg	代号 Catalog No.	(W)	(θ)	SANKYO 代号对照 Catalog No.
	标准加工力 (100万回) Standard Working Force (one million strokes)	允许加工力 (30万回) Allowable Working Force (300,000 strokes)	初压 Initial Load	终压 Final Load						
50.9	392.0 (40.0)	784.0 (79.9)	3268.8 (333.1)	19612.8 (1998.7)	127.0	272.3	KMAC	600	15	SUWB



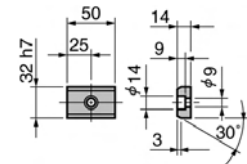
Order

Catalog No. (W) - (θ)
KMAC 600 - 15



Option

■ 键详图 Key Specification



KMAC600-20

Cam Diagram

Detail of Driver Backup

■ 零部件表
Table of Components

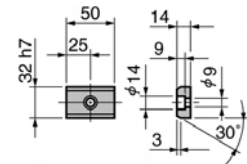
代号 No.	名称 Description	数量 Qty	材料和备注 Material and Remark
①	滑动块 Cam Slider	1	HT300
②	驱动块 Cam Driver	1	HT300
③	上滑板B Base Plate B	2	铜合金 Bronze
④	底座 Cam Holder	1	HT300
⑤	弹簧滑座 Spring Guide Block	2	QT450
⑥	弹簧销 Spring Guide Pin	4	45
⑦	上滑板A Base Plate A	R/L1	铜合金 Bronze
⑧	上滑板C Base Plate C	1	铜合金 Bronze
⑩	凸型 Cam Slide Guide	1	铜合金 Bronze
⑪	强制返回 Positive Return Follower	2	45
⑫	安全挡板 Safety Plate	2	45
⑬	键A Key A	3	45
⑭	键B Key B	3	45
⑮	螺旋弹簧 Coil Spring	4	TM50-225
⑰	内六角螺钉 Hexagon Socket Head Bolt	11	M16×45
⑱	内六角螺钉 Hexagon Socket Head Bolt	8	M20×50
⑲	内六角螺钉 Hexagon Socket Head Bolt	4	M12×35
⑲	内六角螺钉 Hexagon Socket Head Bolt	6	M8×15
⑲	内六角螺钉 Hexagon Socket Head Bolt	2	M10×25
⑲	内六角螺钉 Hexagon Socket Head Bolt	2	M8×45
⑲	内六角螺钉 Hexagon Socket Head Bolt	8	M10×20
⑲	内螺纹圆柱销 Dowel Pin With Female Thread	6	φ13×40
⑲	缓冲块 Stopper	6	φ22×15
⑲	下滑板 Plate	R/L1	铜合金 Bronze
⑲	弹簧挡板 Spring Guide Plate	2	45
⑲	内六角螺钉 Hexagon Socket Head Bolt	8	M16×50
⑲	挡板 Spring Plate	2	45

行程 Travel S	加工力 Working Force kN(tonf)		弹簧力 Spring Force N(kgpf)		滑块重量 Slider Weight kg	总重量 Total Weight kg	代号 Catalog No.	(W)	(θ)	SANKYO 代号对照 Catalog No.
	标准加工力 (100万回) Standard Working Force (one million strokes)	允许加工力 (30万回) Allowable Working Force (300,000 strokes)	初压 Initial Load	终压 Final Load						
55.3	392.0 (40.0)	784.0 (79.9)	3268.8 (333.1)	19612.8 (1998.7)	127.0	268.8	KMAC	600	20	SUWB

Order **Catalog No. (W) - (θ)**
KMAC 600 - 20

Option

■ 键详图 Key Specification



KMAC 600

KMAC600-30

■ Cam Diagram

■ Detail of Driver Backup

Arrow View

■ 零部件表
Table of Components

代号 No.	名称 Description	数量 Qty	材料和备注 Material and Remark
①	滑动块 Cam Slider	1	HT300
②	驱动块 Cam Driver	1	HT300
③	上滑板B Base Plate B	2	铜合金 Bronze
④	底座 Cam Holder	1	HT300
⑤	弹簧滑座 Spring Guide Block	2	QT450
⑥	弹簧销 Spring Guide Pin	4	45
⑦	上滑板A Base Plate A	R/L1	铜合金 Bronze
⑧	上滑板C Base Plate C	1	铜合金 Bronze
⑩	凸V型 Cam Slide Guide	1	铜合金 Bronze
⑪	强制拉回 Positive Return Follower	2	45
⑫	安全挡板 Safety Plate	2	45
⑬	键A Key A	3	45
⑭	键B Key B	3	45
⑮	螺旋弹簧 Coil Spring	4	TM50-225
⑯	内六角螺钉 Hexagon Socket Head Bolt	11	M16×45
⑰	内六角螺钉 Hexagon Socket Head Bolt	8	M20×50
⑱	内六角螺钉 Hexagon Socket Head Bolt	4	M12×35
⑲	内六角螺钉 Hexagon Socket Head Bolt	6	M8×15
⑳	内六角螺钉 Hexagon Socket Head Bolt	2	M10×25
㉑	内六角螺钉 Hexagon Socket Head Bolt	2	M8×45
㉒	内六角螺钉 Hexagon Socket Head Bolt	8	M10×20
㉓	内螺纹圆柱销 Dowel Pin With Female Thread	6	φ13×40
㉔	缓冲块 Stopper	6	φ22×15
㉕	下滑板 Plate	R/L1	铜合金 Bronze
㉖	弹簧挡板 Spring Guide Plate	2	45
㉗	内六角螺钉 Hexagon Socket Head Bolt	8	M16×50
㉘	挡板 Spring Plate	2	45

行程 Travel S	加工力 Working Force kN(tonf)		弹簧力 Spring Force N(kgF)		滑块重量 Slider Weight kg	总重量 Total Weight kg	代号 Catalog No.	(W)	(θ)	SANKYO 代号对照 Catalog No.
	标准加工力 (100万回) Standard Working Force (one million strokes)	允许加工力 (30万回) Allowable Working Force (300,000 strokes)	初压 Initial Load	终压 Final Load						
65.1	392.0 (40.0)	784.0 (79.9)	3268.8 (333.1)	19612.8 (1998.7)	127.0	276.6	KMAC	600	30	SUWB



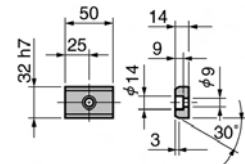
Order

Catalog No. (W) - (θ)
KMAC 600 - 30



Option

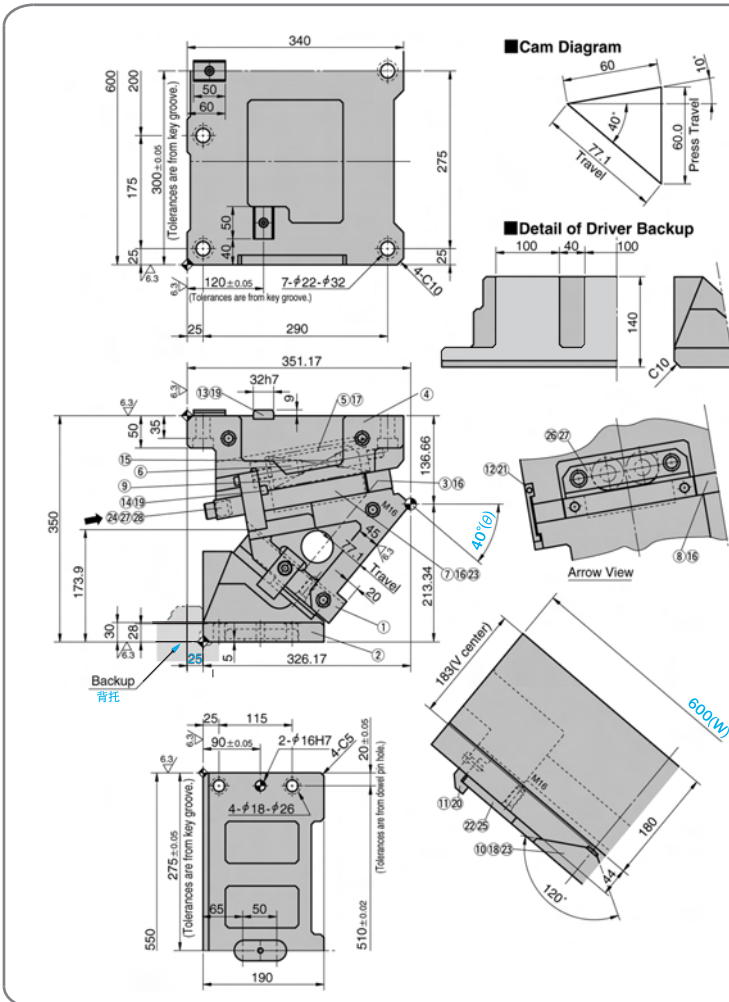
■ 键详图 Key Specification



KMAC600-40

■ 零部件表 Table of Components

代号 No.	名称 Description	数量 Qty	材料和备注 Material and Remark
①	滑动块 Cam Slider	1	HT300
②	驱动块 Cam Driver	1	HT300
③	上滑板B Base Plate B	2	铜合金 Bronze
④	底座 Cam Holder	1	HT300
⑤	弹簧滑座 Spring Guide Block	2	QT450
⑥	弹簧销 Spring Guide Pin	4	45
⑦	上滑板A Base Plate A	R/L1	铜合金 Bronze
⑧	上滑板C Base Plate C	1	铜合金 Bronze
⑩	PIV型 Cam Slide Guide	1	铜合金 Bronze
⑪	强制拉回 Positive Return Follower	2	45
⑫	安全挡板 Safety Plate	2	45
⑬	键A Key A	3	45
⑭	键B Key B	3	45
⑮	螺旋弹簧 Coil Spring	4	TM50-225
⑯	内六角螺钉 Hexagon Socket Head Bolt	11	M16×45
⑰	内六角螺钉 Hexagon Socket Head Bolt	8	M20×50
⑱	内六角螺钉 Hexagon Socket Head Bolt	4	M12×35
⑲	内六角螺钉 Hexagon Socket Head Bolt	6	M8×15
⑳	内六角螺钉 Hexagon Socket Head Bolt	2	M10×25
㉑	内六角螺钉 Hexagon Socket Head Bolt	2	M8×45
㉒	内六角螺钉 Hexagon Socket Head Bolt	8	M10×20
㉓	内螺纹圆柱销 Dowel Pin With Female Thread	6	φ13×40
㉔	缓冲块 Stopper	6	φ22×15
㉕	下滑板 Plate	R/L1	铜合金 Bronze
㉖	弹簧挡板 Spring Guide Plate	2	45
㉗	内六角螺钉 Hexagon Socket Head Bolt	8	M16×50
㉘	挡板 Spring Plate	2	45



行程 Travel S	加工力 Working Force kN(tonf)		弹簧力 Spring Force N(kgf)		滑块重量 Slider Weight kg	总重量 Total Weight kg	代号 Catalog No.	(W)	(θ)	SANKYO 代号对照 Catalog No.
	标准加工力 (100万回) Standard Working Force (one million strokes)	允许加工力 (30万回) Allowable Working Force (300,000 strokes)	初压 Initial Load	终压 Final Load						
77.1	392.0 (40.0)	784.0 (79.9)	3268.8 (333.1)	19612.8 (1998.7)	127.0	285.2	KMAC	600	40	SUWB



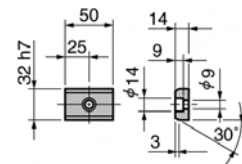
Order

Catalog No. (W) - (θ)
KMAC 600 - 40



Option

■ 键详图 Key Specification



KMAC
600

KMAC600-50

Cam Diagram

60
59.3 Travel
50°
71.5 Press Travel

Detail of Driver Backup

100 40 100
150
C10

Arrow View

189(V center)
600(W)
180

■ 零部件表
Table of Components

代号 No.	名称 Description	数量 Qty	材料和备注 Material and Remark
①	滑动块 Cam Slider	1	HT300
②	驱动块 Cam Driver	1	HT300
③	上滑板B Base Plate B	2	铜合金 Bronze
④	底座 Cam Holder	1	HT300
⑤	弹簧滑座 Spring Guide Block	2	QT450
⑥	弹簧销 Spring Guide Pin	4	45
⑦	上滑板A Base Plate A	R/L1	铜合金 Bronze
⑧	上滑板C Base Plate C	1	铜合金 Bronze
⑩	凸V型 Cam Slide Guide	1	铜合金 Bronze
⑪	强制拉回 Positive Return Follower	2	45
⑫	安全挡板 Safety Plate	2	45
⑬	键A Key A	3	45
⑭	键B Key B	3	45
⑮	螺旋弹簧 Coil Spring	4	TM50-225
⑯	内六角螺钉 Hexagon Socket Head Bolt	11	M16×45
⑰	内六角螺钉 Hexagon Socket Head Bolt	8	M20×50
⑱	内六角螺钉 Hexagon Socket Head Bolt	4	M12×35
⑲	内六角螺钉 Hexagon Socket Head Bolt	6	M8×15
⑳	内六角螺钉 Hexagon Socket Head Bolt	2	M10×25
㉑	内六角螺钉 Hexagon Socket Head Bolt	2	M8×45
㉒	内六角螺钉 Hexagon Socket Head Bolt	8	M10×20
㉓	内螺纹圆柱销 Dowel Pin With Female Thread	6	φ13×40
㉔	缓冲块 Stopper	6	φ22×15
㉕	下滑板 Plate	R/L1	铜合金 Bronze
㉖	弹簧挡板 Spring Guide Plate	2	45
㉗	内六角螺钉 Hexagon Socket Head Bolt	8	M16×50
㉘	挡板 Spring Plate	2	45

行程 Travel S	加工力 Working Force kN(tonf)		弹簧力 Spring Force N(kgf)		滑块重量 Slider Weight kg	总重量 Total Weight kg	代号 Catalog No.	(W)	(θ)	SANKYO 代号对照 Catalog No.
	标准加工力 (100万回) Standard Working Force (one million strokes)	允许加工力 (30万回) Allowable Working Force (300,000 strokes)	初压 Initial Load	终压 Final Load						
93.3	392.0 (40.0)	784.0 (79.9)	3268.8 (333.1)	19612.8 (1998.7)	127.0	283.5	KMAC	600	50	SUWB



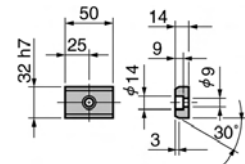
Order

Catalog No. (W) - (θ)
KMAC 600 - 50



Option

■ 键详图 Key Specification



KMAC600-60

Cam Diagram

Detail of Driver Backup

Backup

■ 零部件表
Table of Components

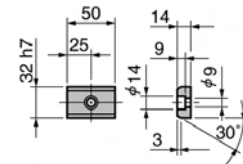
代号 No.	名称 Description	数量 Qty	材料和备注 Material and Remark
①	滑动块 Cam Slider	1	HT300
②	驱动块 Cam Driver	1	HT300
③	上滑板B Base Plate B	2	铜合金 Bronze
④	底座 Cam Holder	1	HT300
⑤	弹簧滑座 Spring Guide Block	2	QT450
⑥	弹簧销 Spring Guide Pin	4	45
⑦	上滑板A Base Plate A	R/L1	铜合金 Bronze
⑧	上滑板C Base Plate C	1	铜合金 Bronze
⑩	凸V型 Cam Slide Guide	1	铜合金 Bronze
⑪	强制拉回 Positive Return Follower	2	45
⑫	安全挡板 Safety Plate	2	45
⑬	键A Key A	3	45
⑭	键B Key B	3	45
⑮	螺旋弹簧 Coil Spring	4	TM50-225
⑯	内六角螺钉 Hexagon Socket Head Bolt	11	M16×45
⑰	内六角螺钉 Hexagon Socket Head Bolt	8	M20×50
⑱	内六角螺钉 Hexagon Socket Head Bolt	4	M12×35
⑲	内六角螺钉 Hexagon Socket Head Bolt	6	M8×15
⑳	内六角螺钉 Hexagon Socket Head Bolt	2	M10×25
㉑	内六角螺钉 Hexagon Socket Head Bolt	2	M8×45
㉒	内六角螺钉 Hexagon Socket Head Bolt	8	M10×20
㉓	内螺纹圆柱销 Dowel Pin With Female Thread	6	φ13×40
㉔	缓冲块 Stopper	6	φ22×15
㉕	下滑板 Plate	R/L1	铜合金 Bronze
㉖	弹簧挡板 Spring Guide Plate	2	45
㉗	内六角螺钉 Hexagon Socket Head Bolt	8	M16×50
㉘	挡板 Spring Plate	2	45

行程 Travel S	加工力 Working Force kN(tonf)		弹簧力 Spring Force N(kgf)		滑块重量 Slider Weight kg	总重量 Total Weight kg	代号 Catalog No.	(W)	(θ)	SANKYO 代号对照 Catalog No.
	标准加工力 (100万回) Standard Working Force (one million strokes)	允许加工力 (30万回) Allowable Working Force (300,000 strokes)	初压 Initial Load	终压 Final Load						
120.0	392.0 (40.0)	784.0 (79.9)	3268.8 (333.1)	19612.8 (1998.7)	133.1	295.6	KMAC	600	60	SUWB

Order **Catalog No. (W) - (θ)**
KMAC 600 - 60

Option

■ 键详图 Key Specification



KMAC 600