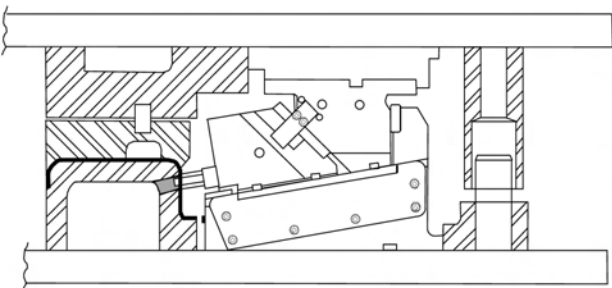
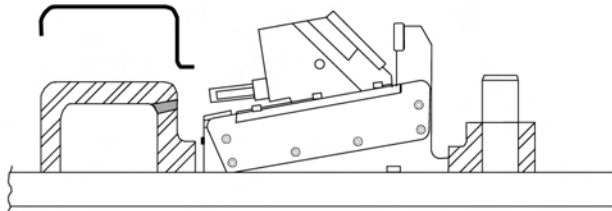
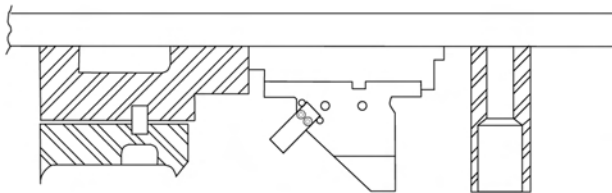


Long Reaching Die Mount Cams

When to use a LRD Cam

The Long Reaching Die Mount Cam line is designed to provide maximum clearance for material movement while optimizing the preferred kinematics associated with standard Die Mount Cams. The Long Reaching Die Mount Cam provides a sound alternative to the use of low angle aerial cams in transfer press operations and is part of our next generation of automotive and large die cams.

Designers will find the height and length of the 110mm travel Long Reaching Cam to be a perfect package providing 30% more slide travel than competitive cams. Take a look at the performance features and you will find it's easy to see why the Long Reaching Cam line will make everyone's job easier.



- ◆ 110mm slide travel allows unencumbered travel over part flanges
- ◆ Quick slide removal with top access keeper plate
- ◆ Side wear strip on slide for extra lubrication and ease of maintenance
- ◆ Reduce noise and wear with the optional accelerator (150 & 200 wide cams)
- ◆ Long lasting Aluminum Bronze Wear Plates against hardened steel surfaces
- ◆ Maintenance-free, self-lubricating components
- ◆ Optional, longer slide adds 35mm to reach
- ◆ Urethane bumper to cushion return
- ◆ ISO nitrogen cylinder with no pre-load
- ◆ Double protection with positive returns
- ◆ Ease of setup with slide lockout capability
- ◆ Rear spring access for ease of maintenance

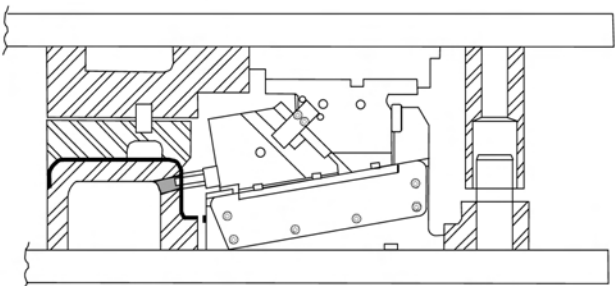
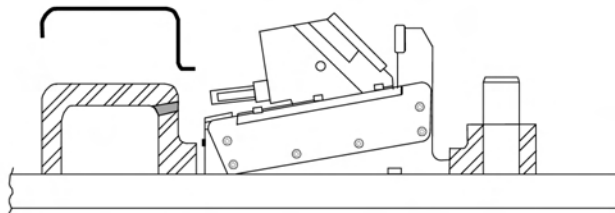
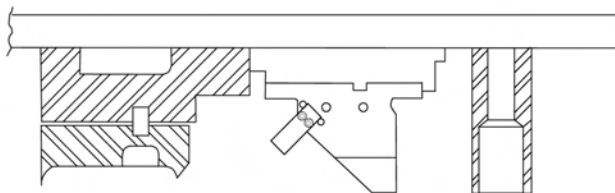
Picture not representative of all angles.

长行程平楔

何时使用LRD长行程平楔

长行程平楔系列设计的目的是为了取出冲压件提供最大的空间。标准长行程平楔是优化设计与运动学完美结合的产物。长行程平楔在冲压件转序方面为小角度吊楔的使用提供了一种替代方式，是今后大型斜楔用于汽车模具的首选。

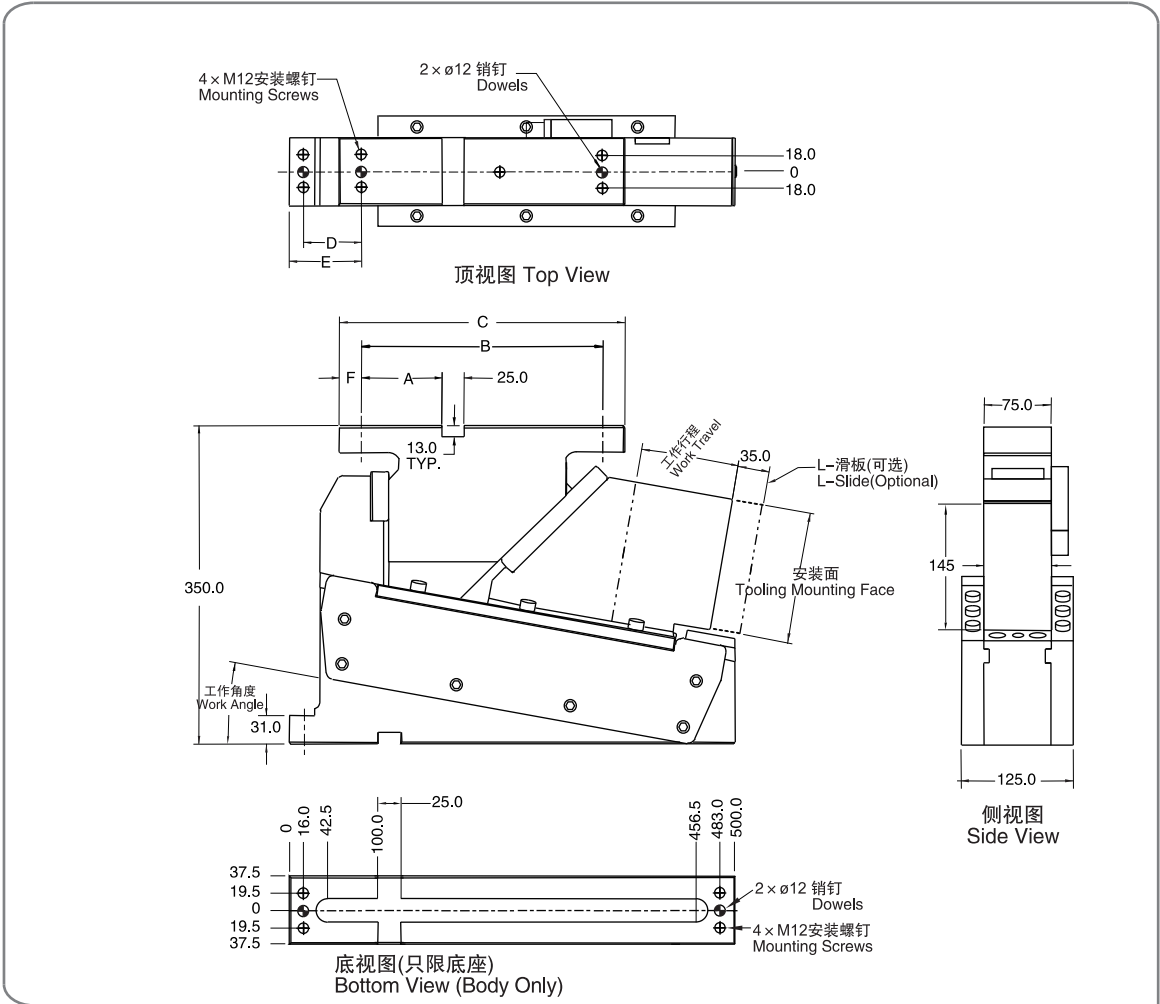
110mm行程的长行程平楔的长和宽设计得非常完美，与其它斜楔相比提供了多30%的滑块行程。只要看看其性能特征，你很容易就会发现为什么长行程平行楔系列会使所有人工作起来更加容易。



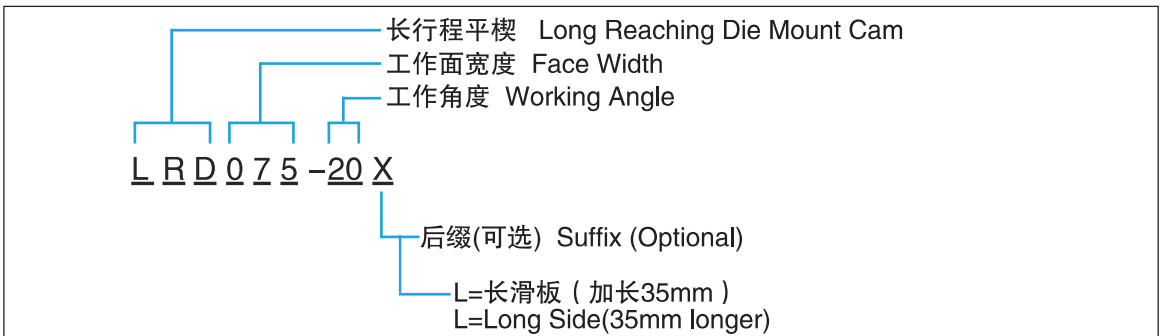
- ◆ 110mm的滑块行程可以不受阻碍地越过零件凸缘
- ◆ 顶部开启的压板可以快速拆卸滑块
- ◆ 侧滑导板提供了进一步的润滑并提高了滑动的准确度
- ◆ 用可选的加速器轮降低噪音（150和200宽的斜楔）
- ◆ 硬的钢导板与铝青铜导板耐磨寿命长
- ◆ 免维护、自润滑部件
- ◆ 可选的加长滑块可增加35mm行程
- ◆ 聚氨酯缓冲器降低操作的噪音
- ◆ 未预加载的标准氮气弹簧
- ◆ 刚性返回器的双重保护
- ◆ 滑块限位装置使斜楔安装更为方便
- ◆ 后面弹簧安装，容易维护

Picture not representative of all angles.

LRD075



编号示例 Numbering Example:



LRD075

零件编号 Catalog No.	工作角度 Work Angle	工作行程 Work Travel (mm)	A (mm)	B (mm)	C (mm)	D (mm)	E (mm)	F (mm)
LRD075-00	0	110	90	270	320	65	81	25
LRD075-05	5	110	90	270	320	65	81	25
LRD075-10	10	110	90	270	320	65	81	25
LRD075-15	15	110	30	210	260	125	141	30
LRD075-20	20	110	30	210	260	125	141	30

销孔压配安装。 Dowel holes are press fit.
 所有尺寸仅供参考。 All dimensions are for reference only.
 公差未注明或者被省略。 No tolerance is stated or implied.

最大工作压力 Max. Work Force	滑块行程 Slide Travel	机械弹簧返回力 Mechanical Spring Return Force	氮气弹簧 ¹ Nitrogen Spring Return Force ¹	最大工作重量 Maximum Tooling Weight		最大工作面拓展 ² Maximum Tooling Envelope ²		斜楔重量 Approx. Cam Unit Weight
				重量[机械弹簧] Weight (Kg/Lbs) Mechanical Spring	重量[氮气弹簧] Weight (Kg/Lbs) Nitrogen Spring	工作面伸长 Protrusion (mm)	工作面单侧拓宽 Tooling Overhang per side of Slide (mm)	
(KN/Tons)	(mm)	初始[1个弹簧] Final (Kg/Lbs) [One Spring]	初始[1个弹簧] Final (Kg/Lbs) [One Spring]					(Kg/Lbs)
134/15	110	N/A	340/748	N/A	8/18	140	25	98/215

¹氮气弹簧返回无初始压力,所列额定值为氮气弹簧的最终压力。

²滑块工作面拓展后将降低斜楔的性能和使用寿命。

¹Optional nitrogen cylinders do not have a pre-load. Listed nitrogen ratings are at the end of their stroke.

²Exceeding the maximum tooling envelope will reduce cam performance and shorten the life of the cam.

LRD
75



Order

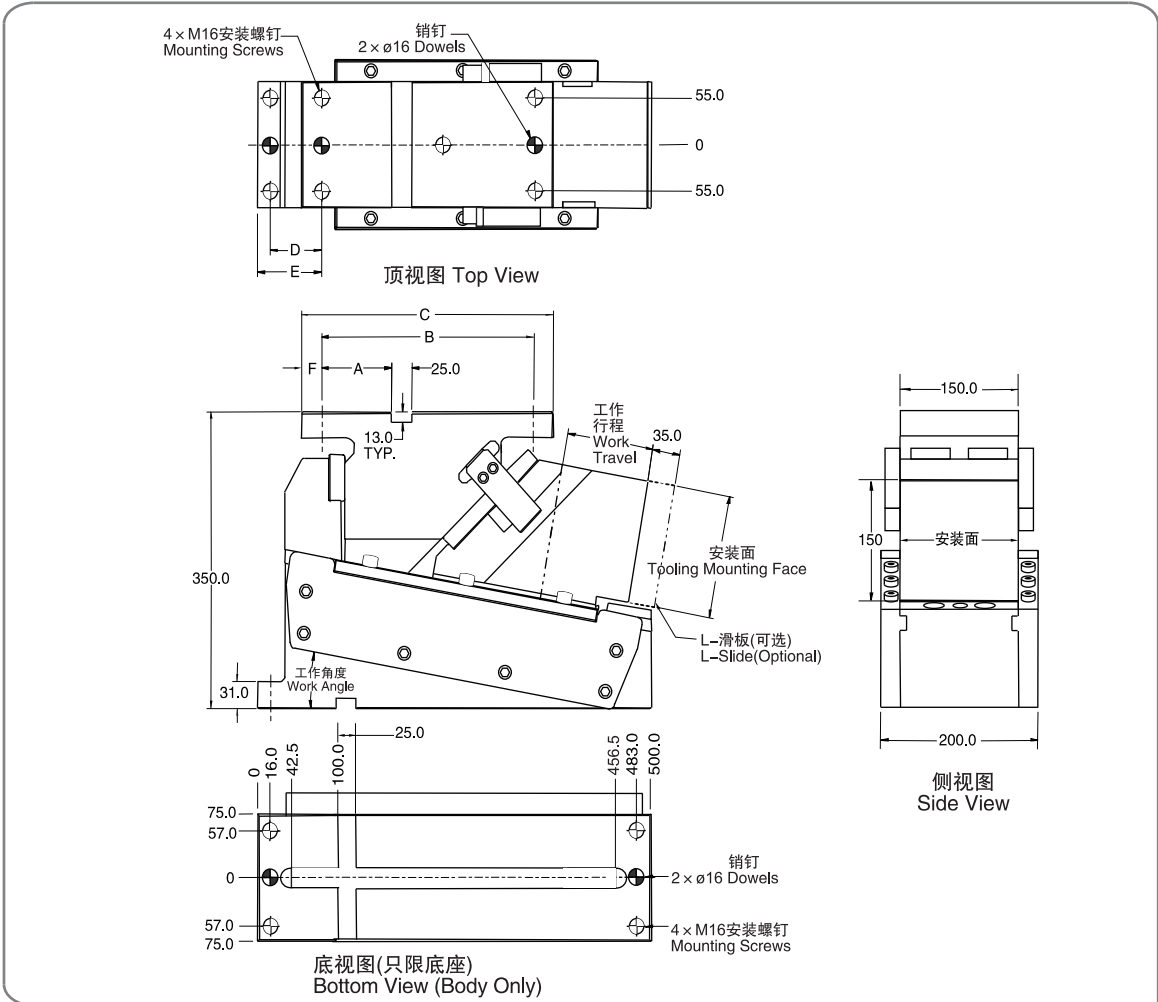
Catalog No.
LRD075-20



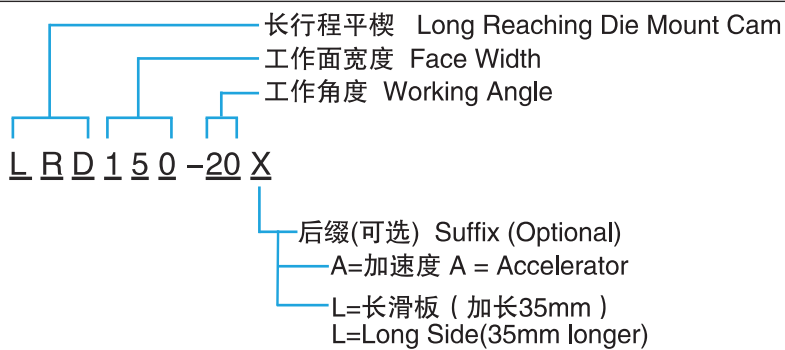
Option

Catalog No. X
LRD075-20 X

LRD150



编号示例 Numbering Example:



LRD150

零件编号 Catalog No.	工作角度 Work Angle	工作行程 Work Travel (mm)	A (mm)	B (mm)	C (mm)	D (mm)	E (mm)	F (mm)
LRD150-00	0	110	90	270	320	65	81	25
LRD150-05	5	110	90	270	320	65	81	25
LRD150-10	10	110	90	270	320	65	81	25
LRD150-15	15	110	30	210	260	125	141	30
LRD150-20	20	110	30	210	260	125	141	30

销孔压配安装。

Dowel holes are press fit.

所有尺寸仅供参考。

All dimensions are for reference only.

公差未注明或者被隐略。

No tolerance is stated or implied.

最大工作压力 Max. Work Force	滑块行程 Slide Travel	机械弹簧返回力 Mechanical Spring Return Force	氮气弹簧 ¹ Nitrogen Spring Return Force ¹	最大工作重量 Maximum Tooling Weight		最大工作面拓展 ² Maximum Tooling Envelope ²		斜楔重量 Approx. Cam Unit Weight
				重量[机械弹簧] Weight (Kg/Lbs) Mechanical Spring	重量[氮气弹簧] Weight (Kg/Lbs) Nitrogen Spring	工作面伸长 Protrusion (mm)	工作面单侧拓宽 Tooling Overhang per side of Slide (mm)	
(KN/Tons)	(mm)	初始[2个弹簧] Final (Kg/Lbs) [Two Spring]	初始[2个弹簧] Final (Kg/Lbs) [Two Spring]					(Kg/Lbs)
223/25	110	N/A	680/1498	N/A	12/26	150	45	179/395

¹氮气弹簧返回无初始压力,所列额定值为氮气弹簧的最终压力。

²滑块工作面拓展后将降低斜楔的性能和使用寿命。

¹Optional nitrogen cylinders do not have a pre-load. Listed nitrogen ratings are at the end of their stroke.

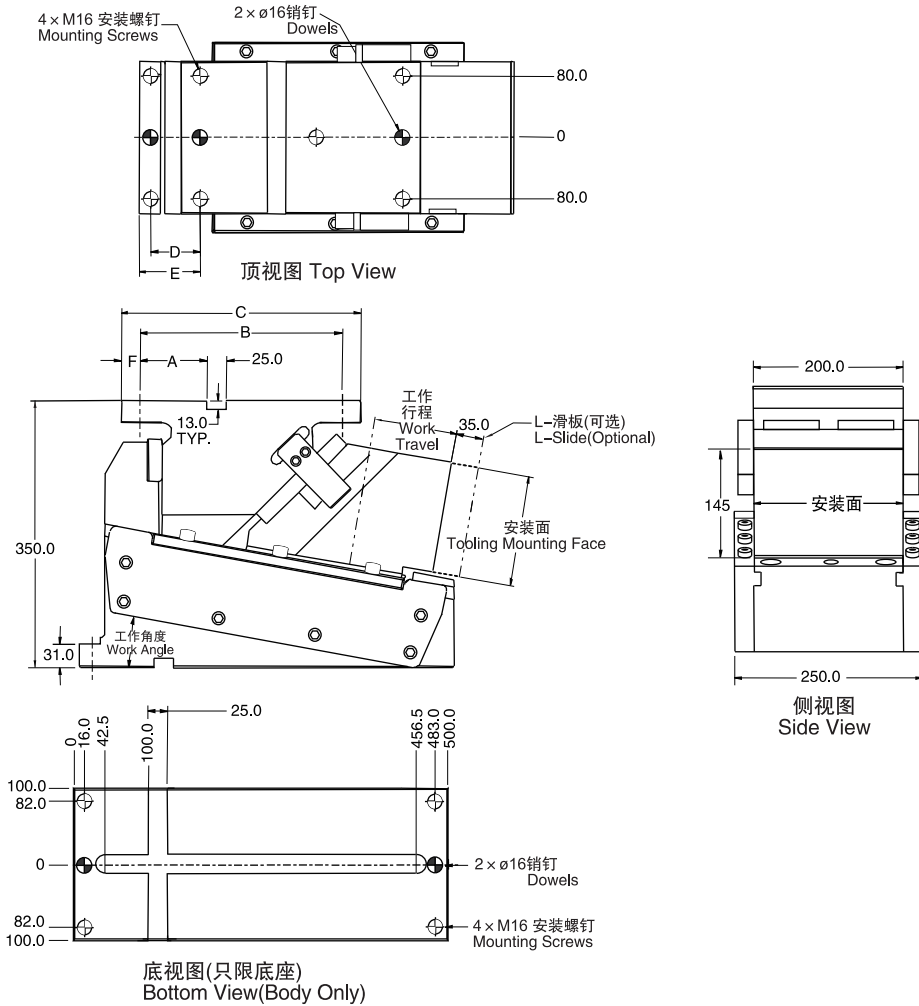
²Exceeding the maximum tooling envelope will reduce cam performance and shorten the life of the cam.

 Order **LRD150-20**

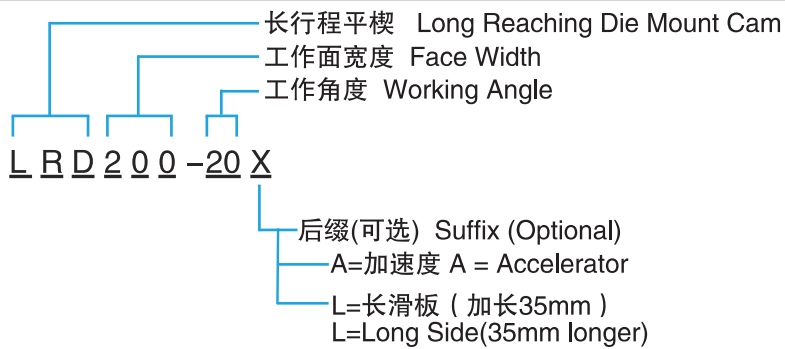
 Option **LRD150-20**

LRD 150

LRD200



编号示例 Numbering Example:



LRD200

零件编号 Catalog No.	工作 角度 Work Angle	工作 行程 Work Travel (mm)	A (mm)	B (mm)	C (mm)	D (mm)	E (mm)	F (mm)
LRD200-00	0	110	90	270	320	65	81	25
LRD200-05	5	110	90	270	320	65	81	25
LRD200-10	10	110	90	270	320	65	81	25
LRD200-15	15	110	30	210	260	125	141	30
LRD200-20	20	110	30	210	260	125	141	30

销孔压配安装。 Dowel holes are press fit.
 所有尺寸仅供参考。 All dimensions are for reference only.
 公差未注明或者被省略。 No tolerance is stated or implied.

最大工作 压力 Max. Work Force	滑块 行程 Slide Travel	机械弹簧返回力 Mechanical Spring Return Force	氮气弹簧 ¹ Nitrogen Spring Return Force ¹	# 选择氮气 弹簧安装孔 ² # Optional Nitrogen Cylinder ² Pockets ²	单个氮气 弹簧返回力 per Nitrogen Spring	最大工作重量 Maximum Tooling Weight		最大工作面拓展 ³ Maximum Tooling Envelope ³		斜楔重量 Approx. Cam Unit Weight
						重量[机械弹簧] Weight (Kg/Lbs) Mechanical Spring	重量[氮气弹簧] Weight (Kg/Lbs) Nitrogen Spring	工作面伸长 Protrusion (mm)	工作面单侧拓宽 Tooling Overhang per side of Slide (mm)	
(KN/Tons)	(mm)	初始[3个弹簧] Final (Kg/Lbs) [Three Springs]	初始[2个弹簧] Final (Kg/Lbs) [Two Springs]		单个终压 Final (Kg/Lbs)					(Kg/Lbs)
312/35	110	N/A	680/1498	1	340/749	N/A	20/44	175	45	231/510

¹氮气弹簧返回无初始压力,所列额定值为氮气弹簧的最终压力。

²滑块上加工有3个弹簧安装孔,对于选用氮气弹簧作为返回力的斜楔,氮气弹簧只用了2个。您可依据标准弹簧来计算返回力,中间增加一个弹簧来加大返回力。

³滑块工作面拓展后将降低斜楔的性能和使用寿命。

¹Optional nitrogen cylinders do not have a pre-load.Listed nitrogen ratings are at the end of their stroke.

²Three spring pockets built into the cam, two nitrogen springs supplied with nitrogen spring configuration.Spring return calculated based on the standard spring quantity .Customet can add an additional spring for more return force.

³Exceeding the maximum tooling envelope will reduce cam performance and shorten the life of the cam.



Order

Catalog No.
LRD200-20



Option

Catalog No. X
LRD200-20 X

LRD
200