



T3TM

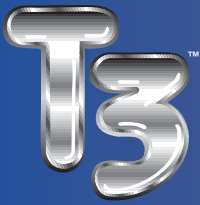
Lowest cost per ton!

- With eleven models to choose from.
- With contact forces from 380 lbs. to 21,400 lbs.
- With diameters from 3/4 in. to 6 in.

HysonTM Products
Associated Spring[®]



Dynamic Solutions for a Global MarketTM



Introduction

The innovative T3 Series of gas springs from Hyson Products gives you the highest force in the smallest space to reduce your cost per ton as much as 60%.

Features include:

- Diameters from 3/4 in. to 6 in.
- Contact forces from 380 lbs. to 21,400 lbs.
- Side port for easy hose connection.
- Upper and lower grooves to allow a variety of mounting options.
- Patented safety guide and rod.

Table of Contents:

Introduction.....	2
Accessories.....	3
T3-170.....	4
T3-320.....	6
T3-350.....	8
T3-500.....	10
T3-750.....	12
T3-1000.....	14
T3-1500.....	16
T3-2400.....	18
T3-4200.....	20
T3-6600.....	22
T3-9500.....	24
Charging and Discharging.....	26
Force Charts.....	28

Accessories



Service Gauge Assembly

Part No. MGA-3000

Use with NCA-2600 or NCA-2600-HP charging assembly and male quick disconnect charge fittings to charge self-contained gas springs only.



T2-770-T3



T2-770-G 1/8

Male Quick Disconnect Charge Fittings

The T2-770-T3 is used to charge all T3 gas springs with the exception of the T3-4200, T3-6600 and T3-9500 that use the T2-770-G 1/8.



Nitrogen Charging Assembly

Part Nos. NCA-2600 and NCA-2600-HP

The NCA-2600 charging assembly is used to transfer nitrogen from a commercial bottle to the gas spring. It includes a CGA-580 bottle fitting, regulator with bottle and system pressure gauges, shut-off valve and 10 feet of high pressure hose with a fitting on the control panel quick disconnect inlet or to the MGA-3000 service gauge assembly.

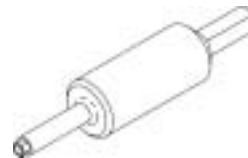
Note: The NCA-2600-HP is available with a CGA-680 fitting for use with 3000-5000 psi bottles. Contact your local gas supplier for bottle fitting verification.

Seal Kits and Tool Kits

T3 gas springs are field repairable except for the T3-170 and T3-320. There is a seal kit with detailed instructions for each gas spring. Tool kits are also available.

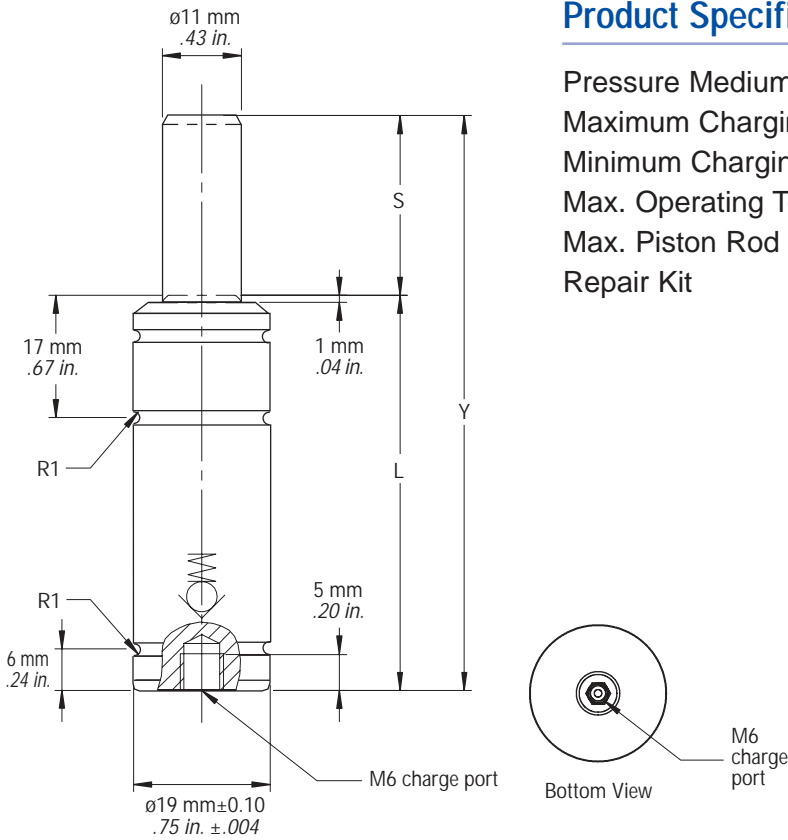
Gas Spring	Seal Kit Number	Tool Kit Number
T3-170	Not repairable	---
T3-320	Not repairable	---
T3-350	T3SK-350	T2TK-250-750
T3-500	T3SK-500	
T3-750	T3SK-750	
T3-1000	T3SK-1000	
T3-1500	T3SK-1500	
T3-2400	T3SK-2400	T2TK
T3-4200	T3SK-4200	
T3-6600	T3SK-6600	
T3-9500	T3SK-9500	

Valve Removal and Installation Tool



Gas Spring	Tool Part Number
T3-170	T2TK-IN-M6
T3-320	
T3-350	
T3-500	
T3-750	
T3-1000	
T3-1500	
T3-2400	T2TK-IN-G 1/8
T3-4200	
T3-9500	

T3™ 170



Product Specifications:

Pressure Medium	Nitrogen Gas
Maximum Charging Pressure	180 bar/2610 psi
Minimum Charging Pressure	25 bar/360 psi
Max. Operating Temperature	80° C/176° F
Max. Piston Rod Velocity	48m/min/157ft/min
Repair Kit	Not repairable

T3-170 Dimensional Information

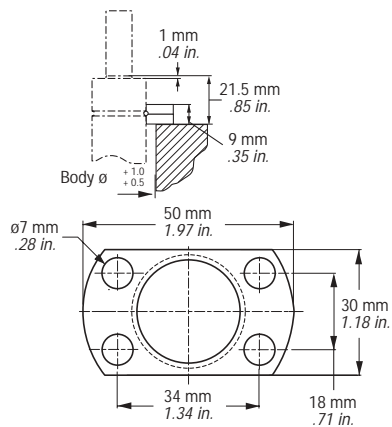
Model X Stroke	Stroke S		Contact Force N lbs.	Full Stroke Force N lbs.	L		Y	
	mm	in			mm	in	mm	in
T3-170X7	7	0.28	1700 380	2800 630	37	1.46	44	1.73
T3-170X10	10	0.39			40	1.57	50	1.97
T3-170X15	15	0.59			45	1.77	60	2.36
T3-170X19	19	0.75			49	1.93	68	2.68
T3-170X25	25	0.98			55	2.17	80	3.15
T3-170X38	38	1.50			68	2.68	106	4.17
T3-170X50	50	1.97			80	3.15	130	5.12
T3-170X63	63	2.48			93	3.66	156	6.14
T3-170X75	75	2.95			110	4.33	185	7.28
T3-170X80	80	3.15			115	4.53	195	7.68
T3-170X100	100	3.94			135	5.31	235	9.25
T3-170X125	125	4.92			160	6.30	285	11.22

Note: All dimensions are nominal. Data shown are typical. Actual data for any particular unit may vary.

Mounting Options:

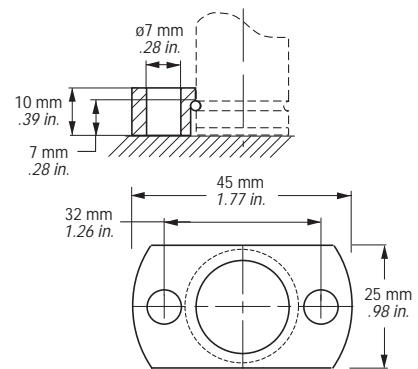
FCR

Part No. T2-90-FCR



FM

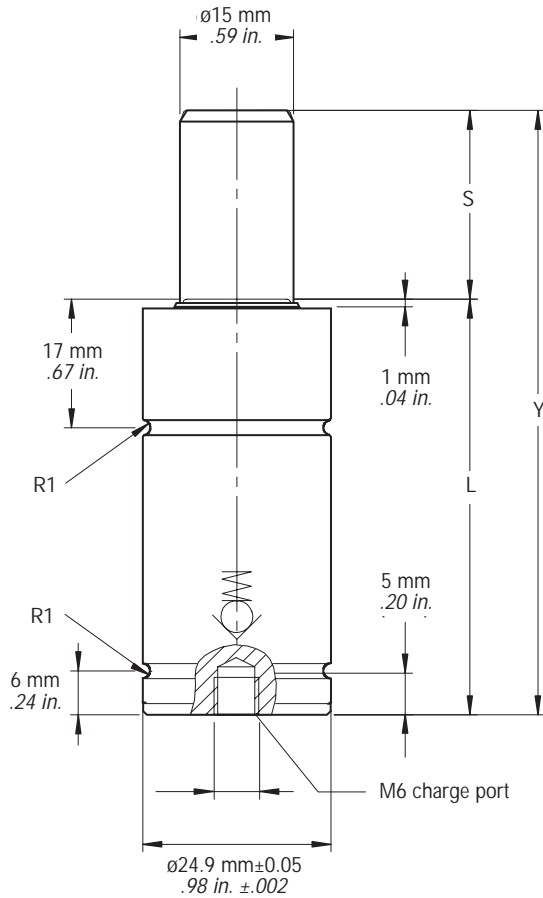
Part No. T2-90-FM



Ordering Options:

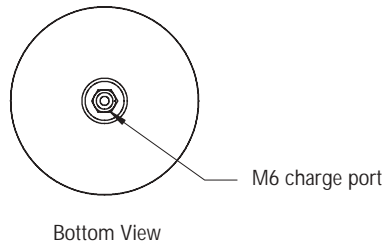
T3-170	X	10	-	FCR	-	2610
Model		Stroke See Dimensional Information		Mounting FCR FM		Charge Pressure* Max. 180 bar/2610 psi

*All T3 gas springs shipped at maximum charge unless otherwise specified.



Product Specifications:

Pressure Medium	Nitrogen Gas
Maximum Charging Pressure	180 bar/2610 psi
Minimum Charging Pressure	25 bar/360 psi
Max. Operating Temperature	80° C/176° F
Max. Piston Rod Velocity	48m/min/157ft/min
Repair Kit	Not repairable



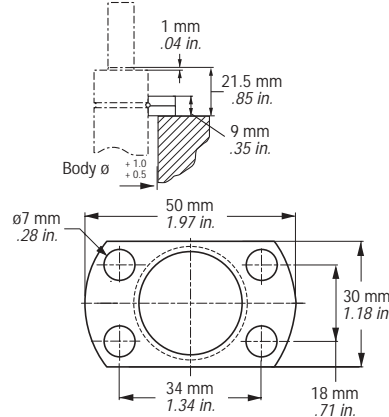
T3-320 Dimensional Information

Model X Stroke	Stroke S		Contact Force N lbs.	Full Stroke Force		L		Y	
	mm	in		N	lbs.	mm	in	mm	in
T3-320X7	7	0.28	3200 720	4800	1080	37	1.46	44	1.73
T3-320X10	10	0.39		4900	1100	40	1.57	50	1.97
T3-320X15	15	0.59		5100	1150	45	1.77	60	2.36
T3-320X19	19	0.75		5100	1150	49	1.93	68	2.68
T3-320X25	25	0.98		5200	1170	55	2.17	80	3.15
T3-320X38	38	1.50		5300	1190	68	2.68	106	4.17
T3-320X50	50	1.97		5300	1190	80	3.15	130	5.12
T3-320X63	63	2.48		5300	1190	93	3.66	156	6.14
T3-320X75	75	2.95		5300	1190	110	4.33	185	7.28
T3-320X80	80	3.15		5300	1190	115	4.53	195	7.68
T3-320X100	100	3.94		5300	1190	135	5.31	235	9.25
T3-320X125	125	4.92		5300	1190	160	6.30	285	11.22

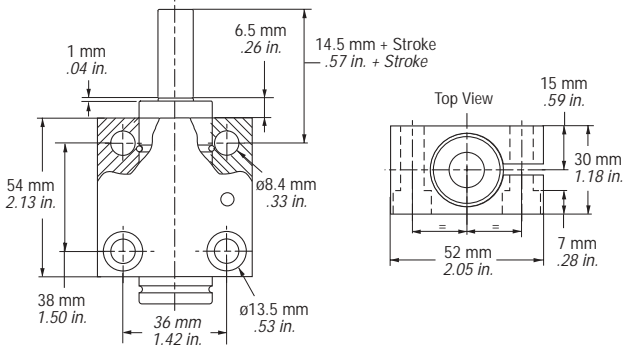
Note: All dimensions are nominal. Data shown are typical. Actual data for any particular unit may vary.

Mounting Options:

FCR
 Part No. T2-180-FCR



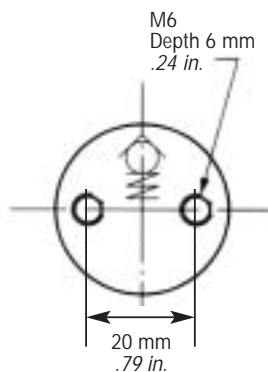
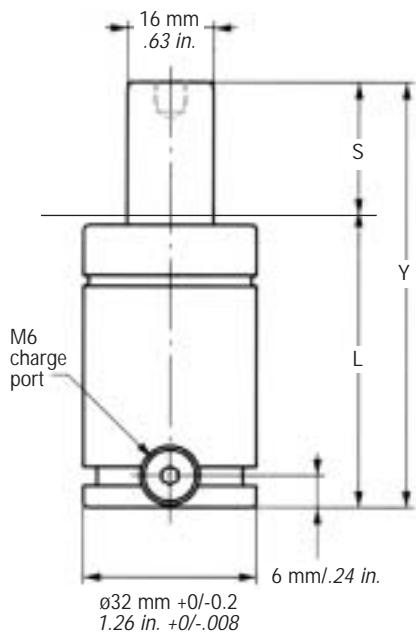
SM
 Part No. T2-180-SM



Ordering Options:

T3-320	X	15	-	FCR	-	2610
Model		Stroke See Dimensional Information		Mounting FCR SM		Charge Pressure* Max. 180 bar/2610 psi

*All T3 gas springs shipped at maximum charge unless otherwise specified.



Bottom View

Product Specifications:

Pressure Medium	Nitrogen Gas
Maximum Charging Pressure	180 bar/2610 psi
Minimum Charging Pressure	25 bar/360 psi
Max. Operating Temperature	80° C/176° F
Max. Piston Rod Velocity	48m/min/157ft/min
Repair Kit	T3SK-350

T3-350 Dimensional Information

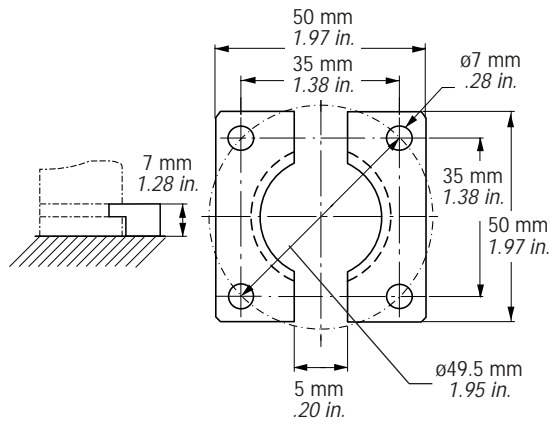
Model X Stroke	Stroke S		Contact Force N lbs.	Full Stroke Force		L		Y	
	mm	in		N	lbs.	mm	in	mm	in
T3-350X10	10	0.39	3600 810	5900	1325	40	1.57	50	1.97
T3-350X13	13	0.51		5200	1170	43	1.69	56	2.20
T3-350X16	16	0.63		5300	1190	46	1.81	62	2.44
T3-350X19	19	0.75		5600	1260	49	1.93	68	2.68
T3-350X25	25	0.98		5500	1235	55	2.17	80	3.15
T3-350X32	32	1.26		5500	1235	62	2.44	94	3.70
T3-350X38	38	1.50		5500	1235	68	2.68	106	4.17
T3-350X50	50	1.97		5500	1235	80	3.15	130	5.12
T3-350X63	63	2.48		5500	1235	93	3.66	156	6.14
T3-350X75	75	2.95		5500	1235	105	4.13	180	7.09
T3-350X80	80	3.15		5500	1235	110	4.33	190	7.48
T3-350X100	100	3.94		5500	1235	130	5.12	230	9.06
T3-350X125	125	4.92		5500	1235	155	6.10	280	11.02

Note: All dimensions are nominal. Data shown are typical. Actual data for any particular unit may vary.

Mounting Options:

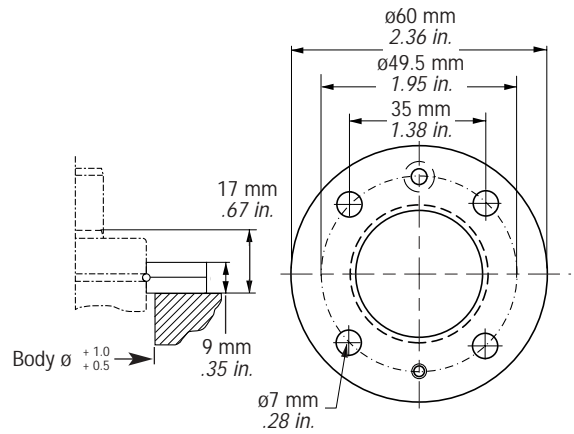
FFC

Part No. T3-350-FFC



FC

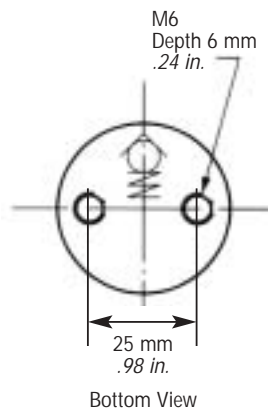
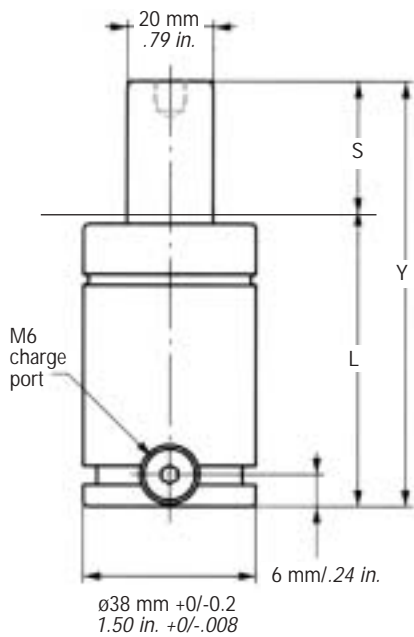
Part No. T3-350-FC



Ordering Options:

T3-350	X	63	-	FC	-	2610
Model		Stroke See Dimensional Information		Mounting FFC FC		Charge Pressure* Max. 180 bar/2610 psi

*All T3 gas springs shipped at maximum charge unless otherwise specified.



Product Specifications:

Pressure Medium	Nitrogen Gas
Maximum Charging Pressure	150 bar/2175 psi
Minimum Charging Pressure	25 bar/360 psi
Max. Operating Temperature	80° C/176° F
Max. Piston Rod Velocity	48m/min/157ft/min
Repair Kit	T3SK-500

T3-500 Dimensional Information

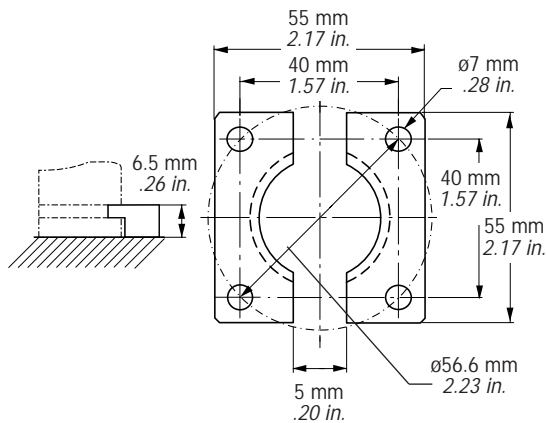
Model X Stroke	Stroke S		Contact Force N lbs.	Full Stroke Force		L		Y	
	mm	in		N	lbs.	mm	in	mm	in
T3-500X10	10	0.39	4700 1055	7200	1620	40	1.57	50	1.97
T3-500X13	13	0.51		7100	1595	43	1.69	56	2.20
T3-500X16	16	0.63		7200	1620	46	1.81	62	2.44
T3-500X19	19	0.75		7400	1665	49	1.93	68	2.68
T3-500X25	25	0.98		7300	1640	55	2.17	80	3.15
T3-500X32	32	1.26		7200	1620	62	2.44	94	3.70
T3-500X38	38	1.50		7200	1620	68	2.68	106	4.17
T3-500X50	50	1.97		7200	1620	80	3.15	130	5.12
T3-500X63	63	2.48		7200	1620	93	3.66	156	6.14
T3-500X75	75	2.95		7100	1595	105	4.13	180	7.09
T3-500X80	80	3.15		7100	1595	110	4.33	190	7.48
T3-500X100	100	3.94		7100	1595	130	5.12	230	9.06
T3-500X125	125	4.92		7100	1595	155	6.10	280	11.02

Note: All dimensions are nominal. Data shown are typical. Actual data for any particular unit may vary.

Mounting Options:

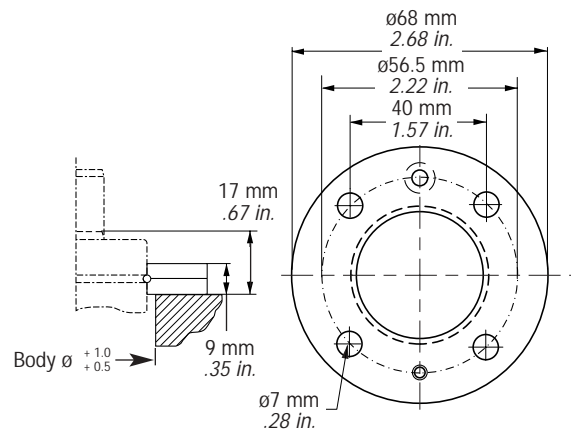
FFC

Part No. T2-250-FFC



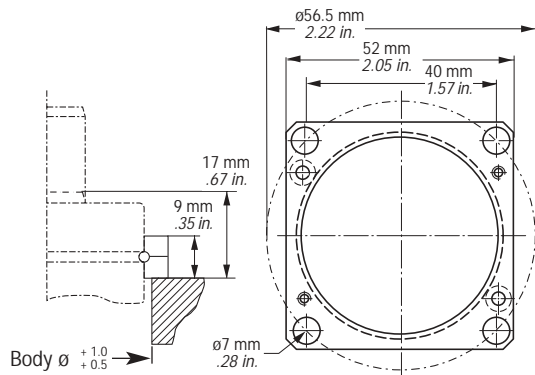
FC

Part No. T2-250-FC



FCS

Part No. T2-250-FCS

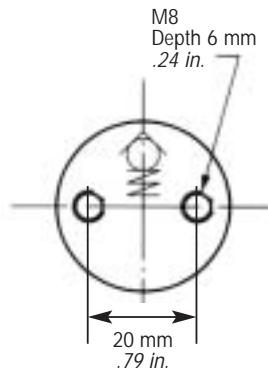
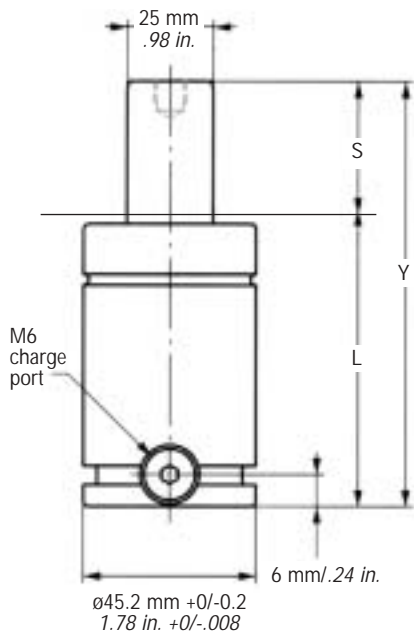


Ordering Options:

T3-500	X	100	-	FCS	-	2175
Model		Stroke See Dimensional Information		Mounting FFC FC FCS		Charge Pressure* Max. 150 bar/2175 psi

*All T3 gas springs shipped at maximum charge unless otherwise specified.

T3™ 750



Bottom View

Product Specifications:

Pressure Medium	Nitrogen Gas
Maximum Charging Pressure	150 bar/2175 psi
Minimum Charging Pressure	25 bar/360 psi
Max. Operating Temperature	80° C/176° F
Max. Piston Rod Velocity	48m/min/157ft/min
Repair Kit	T3SK-750

T3-750 Dimensional Information

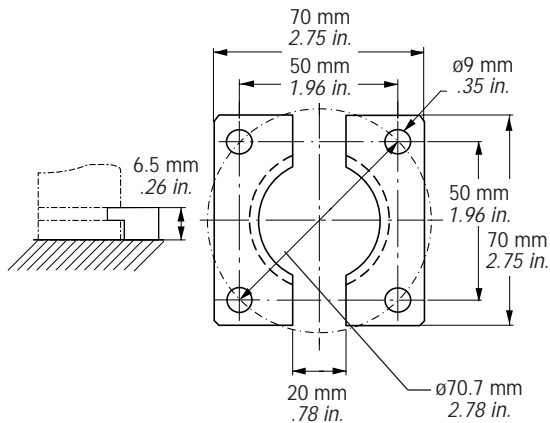
Model X Stroke	Stroke S		Contact Force N lbs.	Full Stroke Force		L		Y	
	mm	in		N	lbs.	mm	in	mm	in
T3-750X10	10	0.39	7400 1665	12100	2720	42	1.65	52	2.05
T3-750X13	13	0.51		12100	2720	45	1.77	58	2.28
T3-750X16	16	0.63		12100	2720	48	1.89	64	2.52
T3-750X19	19	0.75		11700	2630	51	2.01	70	2.76
T3-750X25	25	0.98		11800	2655	57	2.24	82	3.23
T3-750X32	32	1.26		11800	2655	64	2.52	96	3.78
T3-750X38	38	1.50		11800	2655	70	2.76	108	4.25
T3-750X50	50	1.97		11800	2655	82	3.23	132	5.20
T3-750X63	63	2.48		11800	2655	95	3.74	158	6.22
T3-750X75	75	2.95		11900	2675	107	4.21	182	7.17
T3-750X80	80	3.15		11900	2675	112	4.41	192	7.56
T3-750X100	100	3.94		11900	2675	132	5.20	232	9.13
T3-750X125	125	4.92		11900	2675	157	6.18	282	11.10

Note: All dimensions are nominal. Data shown are typical. Actual data for any particular unit may vary.

Mounting Options:

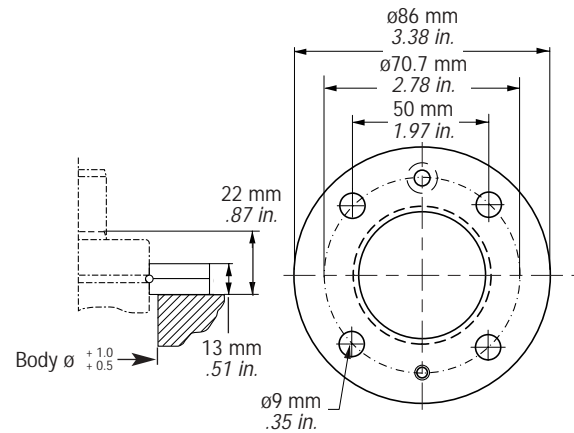
FFC

Part No. T2-500-FFC



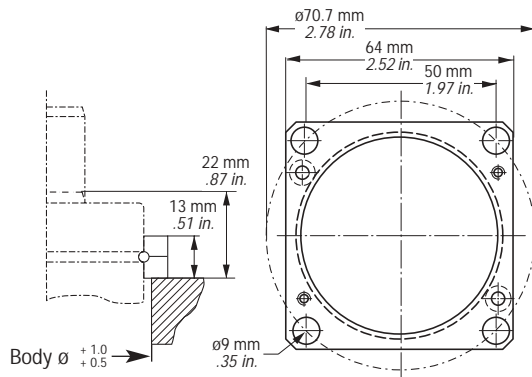
FC

Part No. T2-500-FC



FCS

Part No. T2-500-FCS

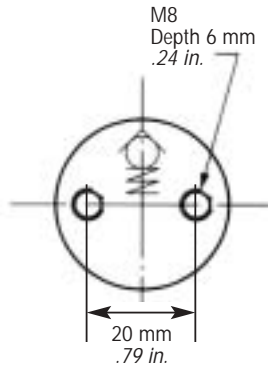
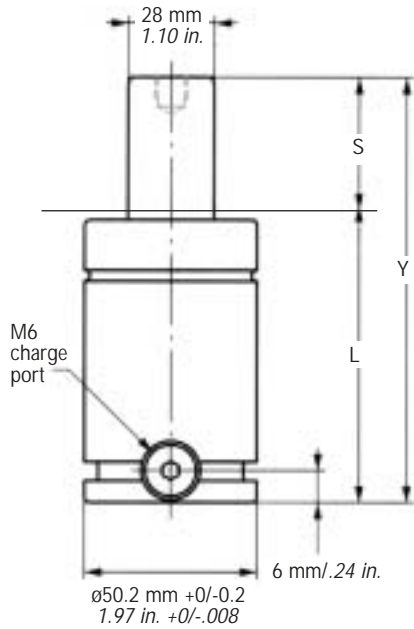


Ordering Options:

T3-750	X	125	-	FCS	-	2175
Model		Stroke See Dimensional Information		Mounting FFC FC FCS		Charge Pressure* Max. 150 bar/2175 psi

*All T3 gas springs shipped at maximum charge unless otherwise specified.

T3™ 1000



Bottom View

Product Specifications:

Pressure Medium	Nitrogen Gas
Maximum Charging Pressure	150 bar/2175 psi
Minimum Charging Pressure	25 bar/360 psi
Max. Operating Temperature	80° C/176° F
Max. Piston Rod Velocity	48m/min/157ft/min
Repair Kit	T3SK-1000

T3-1000 Dimensional Information

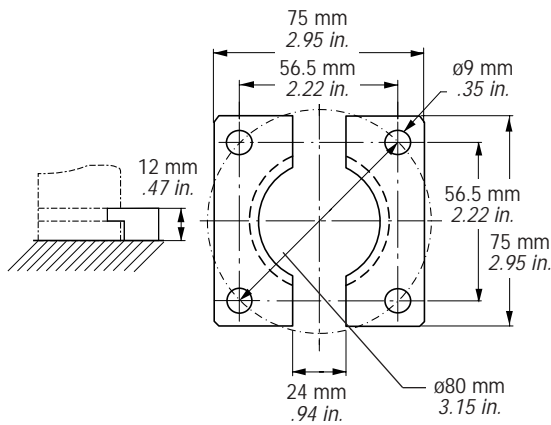
Model X Stroke	Stroke S		Contact Force N lbs.	Full Stroke Force		L		Y	
	mm	in		N	lbs.	mm	in	mm	in
T3-1000X13	13	0.51	9200 2070	13800	3105	51	2.01	64	2.53
T3-1000X16	16	0.63		13800	3105	54	2.13	70	2.76
T3-1000X19	19	0.75		14000	3145	57	2.24	76	2.99
T3-1000X25	25	0.98		14200	3190	63	2.48	88	3.46
T3-1000X32	32	1.26		14300	3215	70	2.76	102	4.02
T3-1000X38	38	1.50		14500	3260	76	2.99	114	4.49
T3-1000X50	50	1.97		14600	3280	88	3.46	138	5.43
T3-1000X63	63	2.48		14700	3305	101	3.98	164	6.46
T3-1000X75	75	2.95		14700	3305	113	4.45	188	7.40
T3-1000X80	80	3.15		14800	3325	118	4.65	198	7.80
T3-1000X100	100	3.94		14800	3325	138	5.43	238	9.37
T3-1000X125	125	4.92		14800	3325	163	6.41	288	11.34

Note: All dimensions are nominal. Data shown are typical. Actual data for any particular unit may vary.

Mounting Options:

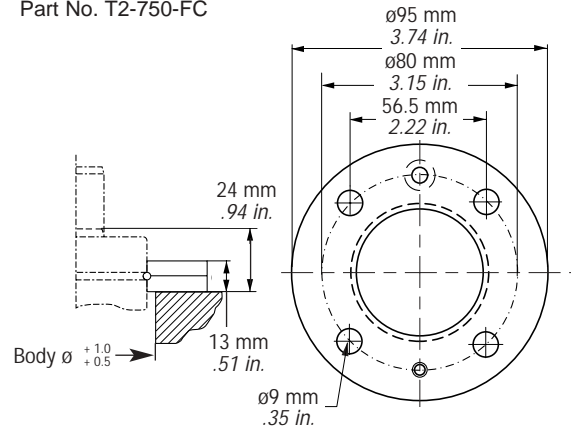
FFC

Part No. T2-750-FFC



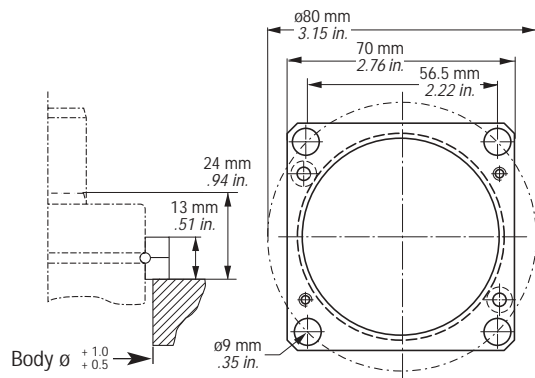
FC

Part No. T2-750-FC



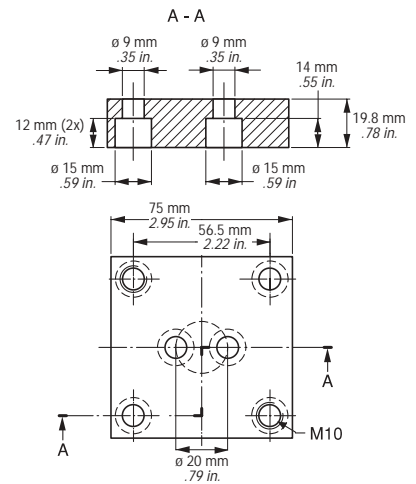
FCS

Part No. T2-750-FCC



MP

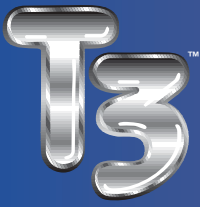
Part No. T2-750-MP



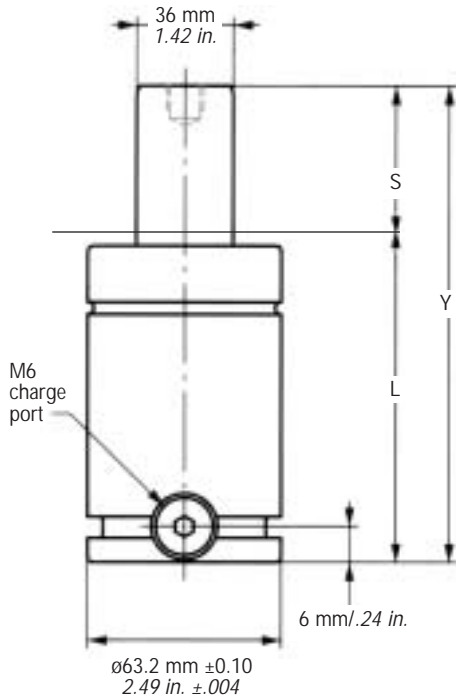
Ordering Options:

T3-1000	X	75	-	FCS	-	2175
Model		Stroke See Dimensional Information		Mounting FFC FC FCS MP		Charge Pressure* Max. 150 bar/2175 psi

*All T3 gas springs shipped at maximum charge unless otherwise specified.

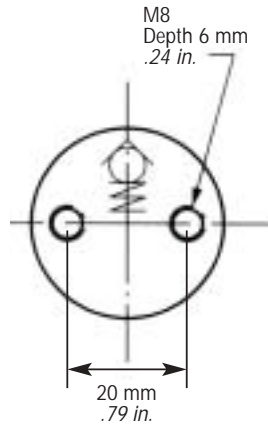


1500



Product Specifications:

Pressure Medium	Nitrogen Gas
Maximum Charging Pressure	150 bar/2175 psi
Minimum Charging Pressure	25 bar/360 psi
Max. Operating Temperature	80° C/176° F
Max. Piston Rod Velocity	48m/min/157ft/min
Repair Kit	T3SK-1500



Bottom View

T3-1500 Dimensional Information

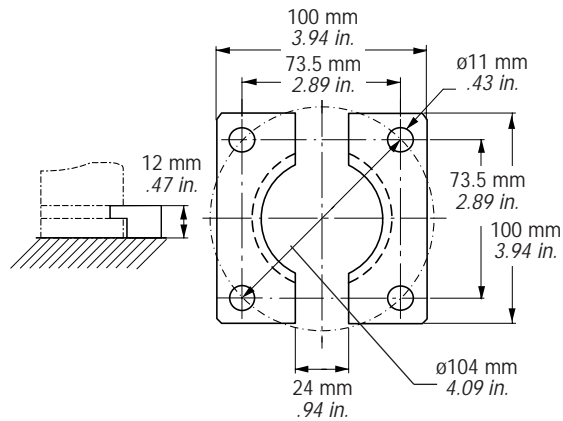
Model X Stroke	Stroke S		Contact Force N lbs.	Full Stroke Force		L		Y	
	mm	in		N	lbs.	mm	in	mm	in
T3-1500X13	13	0.51	15000 3375	24000	5395	57	2.24	70	2.76
T3-1500X16	16	0.63		24100	5420	60	2.36	76	2.99
T3-1500X19	19	0.75		24200	5440	63	2.48	82	3.23
T3-1500X25	25	0.98		24300	5365	69	2.72	94	3.70
T3-1500X32	32	1.26		23800	5355	76	2.99	108	4.25
T3-1500X38	38	1.50		23900	5375	82	3.23	120	4.72
T3-1500X50	50	1.97		24000	5395	94	3.70	144	5.67
T3-1500X63	63	2.48		24100	5420	107	4.21	170	6.69
T3-1500X75	75	2.95		24200	5440	119	4.69	194	7.64
T3-1500X80	80	3.15		24200	5440	124	4.88	204	8.03
T3-1500X100	100	3.94		24300	5465	144	5.67	244	9.61
T3-1500X125	125	4.92		24300	5465	169	6.65	294	11.57

Note: All dimensions are nominal. Data shown are typical. Actual data for any particular unit may vary.

Mounting Options:

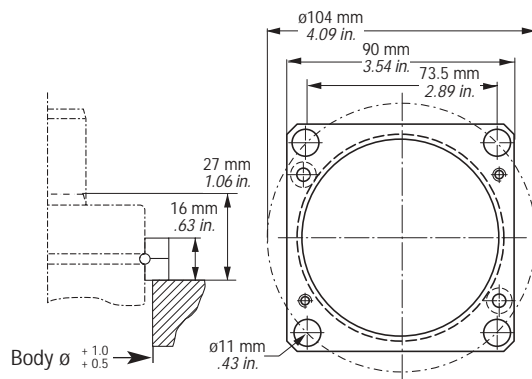
FFC

Part No. T3-1500-FFC



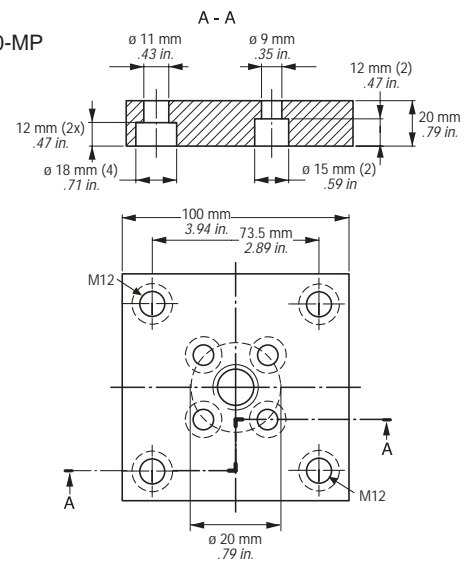
FCS

Part No. T3-1500-FCS



MP

Part No. T3-1500-MP



Ordering Options:

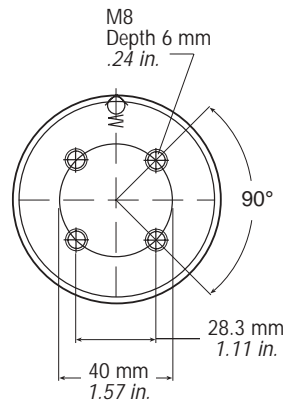
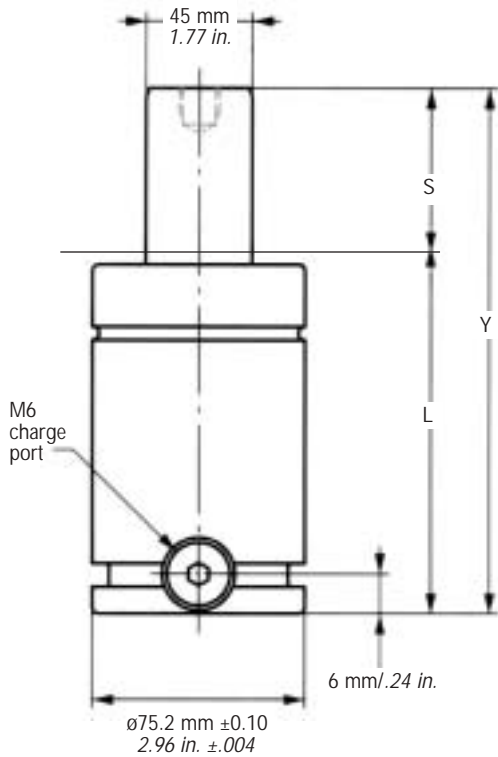
T3-1500	X	38	-	MP	-	2175
Model		Stroke See Dimensional Information		Mounting FFC FCS MP		Charge Pressure* Max. 150 bar/2175 psi

*All T3 gas springs shipped at maximum charge unless otherwise specified.

T3™ 2400

Product Specifications:

Pressure Medium	Nitrogen Gas
Maximum Charging Pressure	150 bar/2175 psi
Minimum Charging Pressure	25 bar/360 psi
Max. Operating Temperature	80° C/176° F
Max. Piston Rod Velocity	48m/min/157ft/min
Repair Kit	T3SK-2400



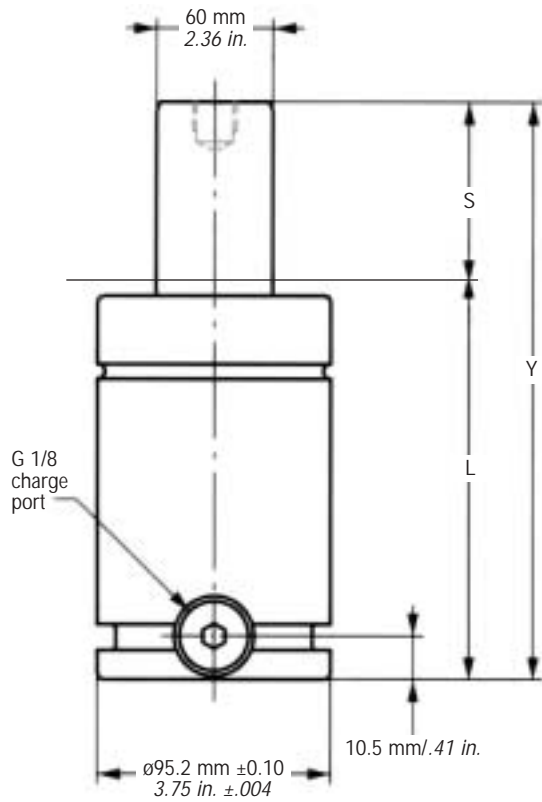
Bottom View

T3-2400 Dimensional Information

Model X Stroke	Stroke S		Contact Force N lbs.	Full Stroke Force		L		Y	
	mm	in		N	lbs.	mm	in	mm	in
T3-2400X16	16	0.63	24000 5395	38300	8610	61	2.40	77	3.03
T3-2400X19	19	0.75		38500	8655	64	2.52	83	3.27
T3-2400X25	25	0.98		38700	8700	70	2.76	95	3.74
T3-2400X32	32	1.26		38600	8680	77	3.03	109	4.29
T3-2400X38	38	1.50		38400	8635	83	3.27	121	4.76
T3-2400X50	50	1.97		39200	8815	95	3.74	145	5.71
T3-2400X63	63	2.48		39200	8815	108	4.25	171	6.73
T3-2400X75	75	2.95		39200	8815	120	4.72	195	7.68
T3-2400X80	80	3.15		39200	8815	125	4.92	205	8.07
T3-2400X100	100	3.94		39300	8835	145	5.71	245	9.65
T3-2400X125	125	4.92		39300	8835	170	6.69	295	11.61

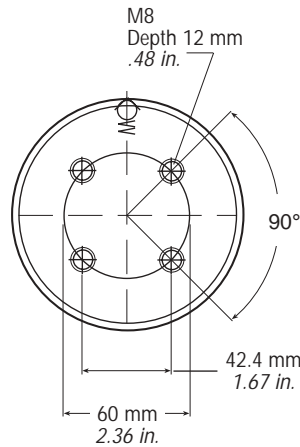
Note: All dimensions are nominal. Data shown are typical. Actual data for any particular unit may vary.

T3™ 4200



Product Specifications:

Pressure Medium	Nitrogen Gas
Maximum Charging Pressure	150 bar/2175 psi
Minimum Charging Pressure	25 bar/360 psi
Max. Operating Temperature	80° C/176° F
Max. Piston Rod Velocity	48m/min/157ft/min
Repair Kit	T3SK-4200

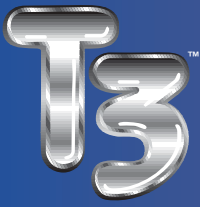


Bottom View

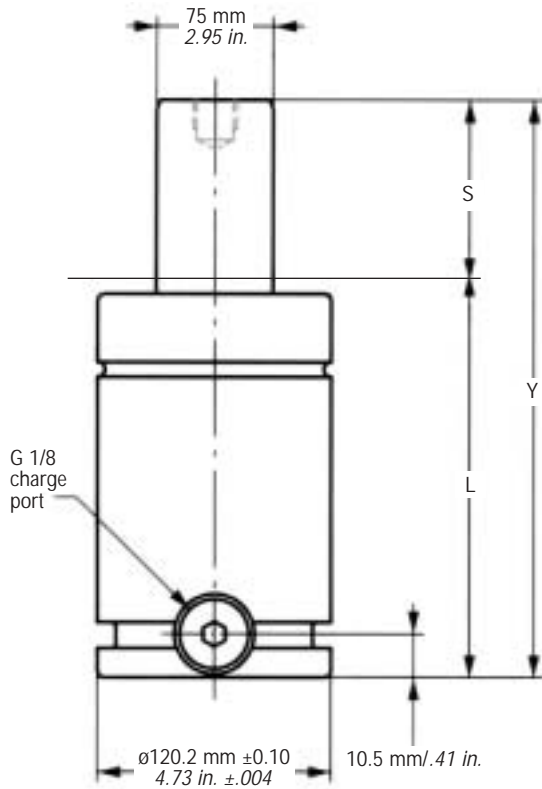
T3-4200 Dimensional Information

Model X Stroke	Stroke S		Contact Force N lbs.	Full Stroke Force		L		Y	
	mm	in		N	lbs.	mm	in	mm	in
T3-4200X16	16	0.63	42000 9440	61700	13870	74	2.91	90	3.54
T3-4200X19	19	0.75		63700	14320	77	3.03	96	3.78
T3-4200X25	25	0.98		60800	13670	83	3.27	108	3.25
T3-4200X32	32	1.26		64300	14555	97	3.82	122	4.80
T3-4200X38	38	1.50		65800	14795	96	3.78	134	5.28
T3-4200X50	50	1.97		67000	15065	108	4.25	158	6.22
T3-4200X63	63	2.48		67800	15245	121	4.76	184	7.24
T3-4200X75	75	2.95		68000	15290	133	5.24	208	8.19
T3-4200X80	80	3.15		68600	15425	138	5.43	218	8.58
T3-4200X100	100	3.94		69100	15535	158	6.22	258	10.16
T3-4200X125	125	4.92		69600	15645	183	7.20	308	12.11

Note: All dimensions are nominal. Data shown are typical. Actual data for any particular unit may vary.

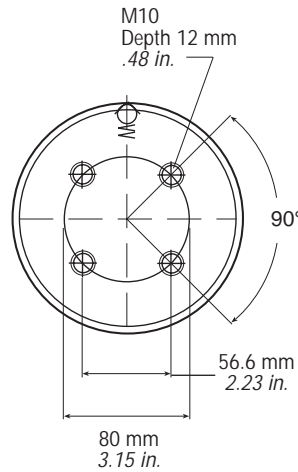


6600



Product Specifications:

Pressure Medium	Nitrogen Gas
Maximum Charging Pressure	150 bar/2175 psi
Minimum Charging Pressure	25 bar/360 psi
Max. Operating Temperature	80° C/176° F
Max. Piston Rod Velocity	48m/min/157ft/min
Repair Kit	T3SK-6600



Bottom View

T3-6600 Dimensional Information

Model X Stroke	Stroke S		Contact Force N lbs.	Full Stroke Force		L		Y	
	mm	in		N	lbs.	mm	in	mm	in
T3-6600X16	16	0.63	66300 14905	89000	20010	84	3.31	100	3.94
T3-6600X19	19	0.75		91000	20460	87	3.43	106	4.17
T3-6600X25	25	0.98		93900	21110	93	3.66	118	4.65
T3-6600X32	32	1.26		96100	21605	100	3.94	132	5.20
T3-6600X38	38	1.50		98200	22075	106	4.17	144	5.67
T3-6600X50	50	1.97		100600	22615	118	4.65	168	6.61
T3-6600X63	63	2.48		102400	23020	131	5.16	194	7.64
T3-6600X75	75	2.95		103400	23245	143	5.63	218	8.58
T3-6600X80	80	3.15		104100	23405	148	5.83	228	8.98
T3-6600X100	100	3.94		105400	23695	168	6.61	268	10.55
T3-6600X125	125	4.92		106500	23945	193	7.60	318	12.52

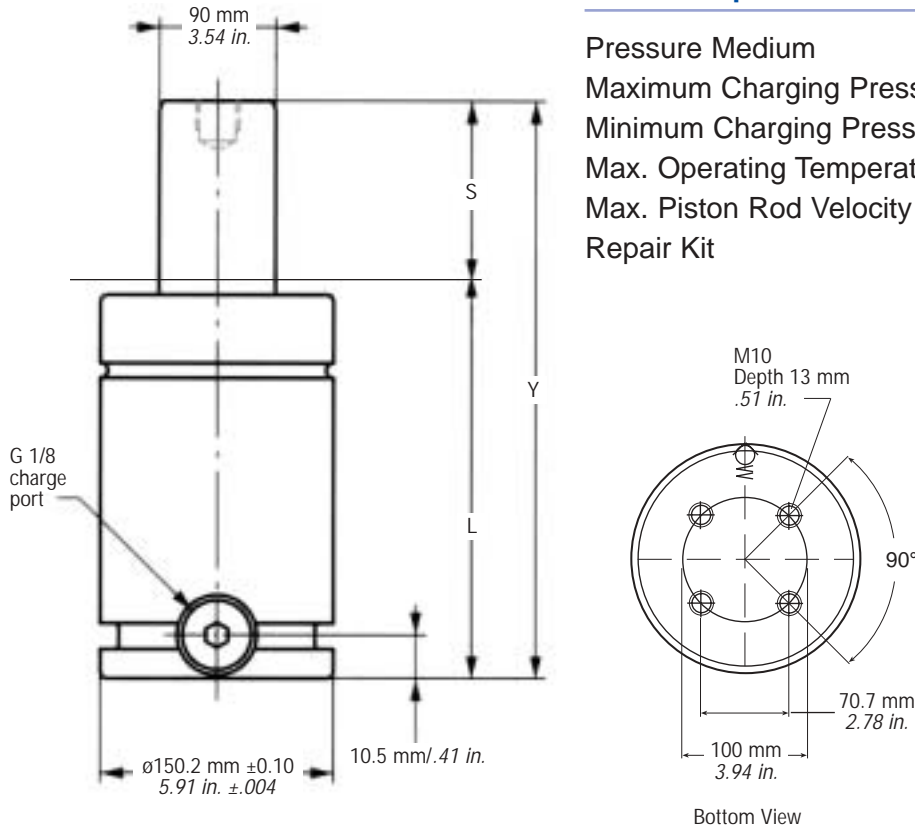
Note: All dimensions are nominal. Data shown are typical. Actual data for any particular unit may vary.

T3[™] 9500

Product Specifications:

Pressure Medium
 Maximum Charging Pressure
 Minimum Charging Pressure
 Max. Operating Temperature
 Max. Piston Rod Velocity
 Repair Kit

Nitrogen Gas
 150 bar/2175 psi
 25 bar/360 psi
 80° C/176° F
 48m/min/157ft/min
 T3SK-9500



T3-9500 Dimensional Information

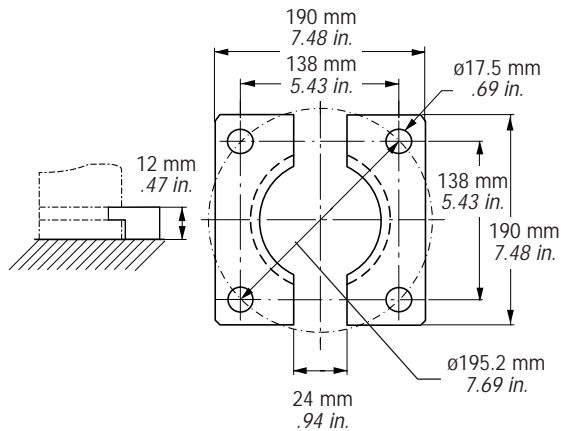
Model X Stroke	Stroke S		Contact Force N lbs.	Full Stroke Force		L		Y	
	mm	in		N	lbs.	mm	in	mm	in
T3-9500X19	19	0.75	95000 21360	135000	30350	97	3.82	116	4.57
T3-9500X25	25	0.98		139000	31250	103	4.06	128	5.04
T3-9500X32	32	1.26		142000	31925	110	4.33	142	5.59
T3-9500X38	38	1.50		143000	32150	116	4.57	154	6.06
T3-9500X50	50	1.97		146000	32825	128	5.04	178	7.01
T3-9500X63	63	2.48		148000	33275	141	5.55	204	8.03
T3-9500X75	75	2.95		149000	33500	153	6.02	228	8.98
T3-9500X80	80	3.15		150000	33725	158	6.22	238	9.37
T3-9500X100	100	3.94		151000	33950	178	7.01	278	10.94
T3-9500X125	125	4.92		152000	34175	203	7.99	328	12.91

Note: All dimensions are nominal. Data shown are typical. Actual data for any particular unit may vary.

Mounting Options:

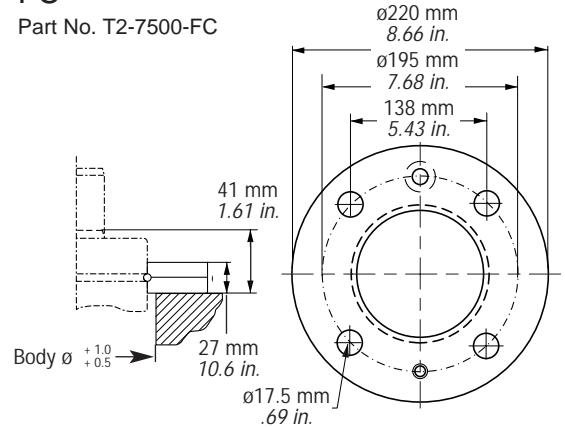
FFC

Part No. T2-7500-FFC



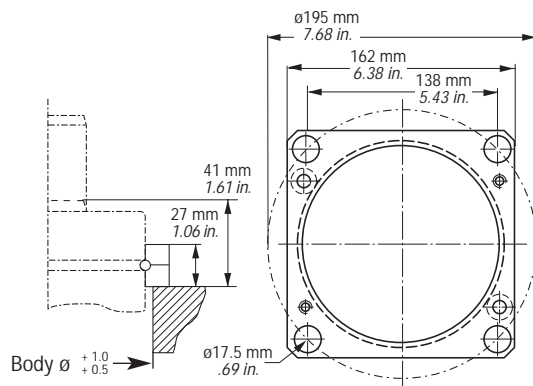
FC

Part No. T2-7500-FC



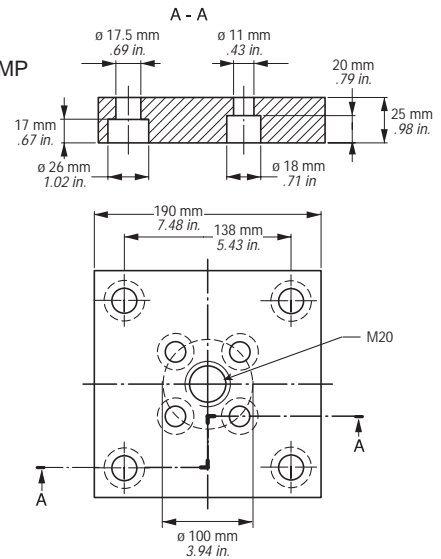
FCS

Part No. T2-7500-FCS



MP

Part No. T2-7500-MP



Ordering Options:

T3-9500	X	125	-	MP	-	2175
Model		Stroke See Dimensional Information		Mounting FFC FC FCS MP		Charge Pressure* Max. 150 bar/2175 psi

*All T3 gas springs shipped at maximum charge unless otherwise specified.



Charging and Discharging T3

! WARNING: Put on safety glasses before charging any gas spring. Before pressurizing any gas spring, inspect for proper assembly, damage, gouges or factory-unauthorized modifications such as welding or grinding. Do not pressurize if damage or improper assembly is noted.

T3 Charging Instructions:

1. Attach Nitrogen Charging Assembly (NCA) to nitrogen gas bottle.
2. Set NCA regulator to zero pressure.
3. Close shut-off valve on NCA hose.

4. Self-Contained Mode

- Attach NCA quick disconnect to quick check inlet valve of MGA.
- Close bleed down valve on MGA.
- Install charge fitting in gas spring charge port.
- Attach MGA quick disconnect to charge fitting.

4. Hosed System Mode

- Attach NCA quick disconnect to quick check inlet valve on control panel.

5. Open valve on nitrogen gas bottle.
6. Set desired pressure on NCA regulator.

! WARNING: To prevent damage to the gas spring and possible personal injury, charge the gas spring to a maximum of 180 bar/2610 psi for T3-170, T3-320 and T3-350, and 150 bar/2175 psi for the other models.

7. SLOWLY open shut-off valve on NCA hose.

! WARNING: To prevent damage to the gas springs with depressed piston rods, slowly apply pressure until piston rods are fully extended.

8. When correct pressure is obtained, close valve on NCA hose.

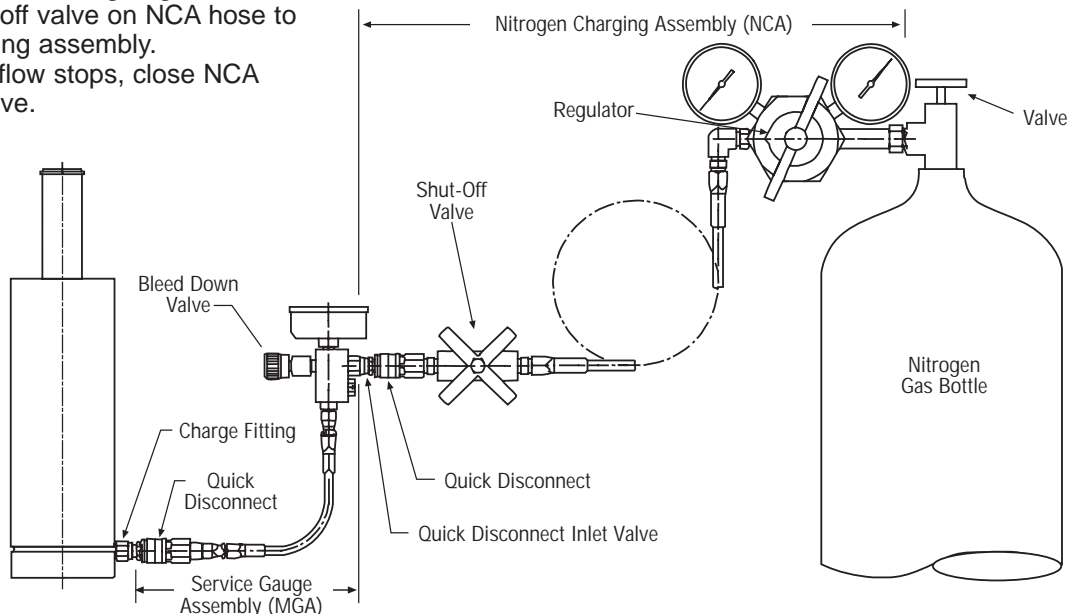
9. Self-Contained Mode

- Disconnect MGA from gas spring.
- Remove charge fitting and replace with charge port plug.

9. Hosed System Mode

- Disconnect NCA from control panel.
- Replace protective cap on quick check inlet valve.

10. Close valve on nitrogen gas bottle.
11. Open shut-off valve on NCA hose to vent charging assembly.
12. When gas flow stops, close NCA shut-off valve.



Gas Springs and Systems

T3 Discharging Instructions:

Self-Contained Mode

1. Remove port plug and thread valve tool into gas spring port.
Use valve tool T2TK-IN-M6 for T3-170 through T3-2400 models, and valve tool T2TK-IN-G1/8 for T3-4200 through T3-9500 models.



Caution: Depress valve only until gas begins to escape. Over-depressing the valve will damage it.

2. Depress piston rod to ensure all gas is evacuated from the spring prior to servicing.

Note: The MGA-3000 and quick disconnect cannot be used to discharge T3 gas springs.

Hosed System Mode

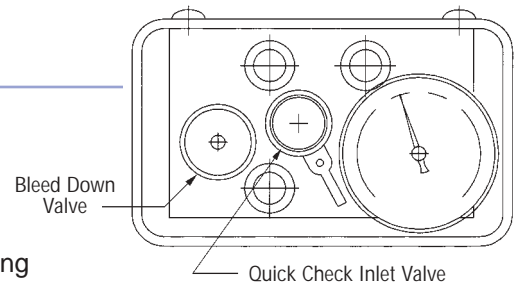
1. SLOWLY open bleed down valve on control panel.

2. When gauge reaches zero and the gas flow stops, depress piston rods.



Caution: Do not depress the piston rods directly with your hand. Place a block of wood between the rod and your hand. The piston may pop up after being manually depressed.

3. Close bleed down valve on control panel.

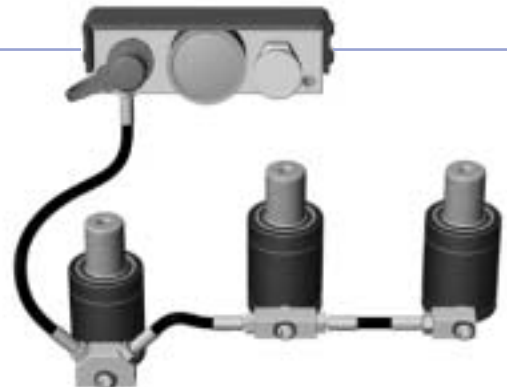


Hose System

The Micro EZ™ Hose System provides pressure adjustability, monitoring and uniform spring pressure – all in a small footprint.

Components

- Flexible 5 mm/.20" diameter hose
- M8X1 hose ends
- Service fittings for M6, G1/8, and 7/16-20 gas spring ports
- Small control panel with 16-M8 connection ports
- Compact 45°, 90° and 180° hose adapters

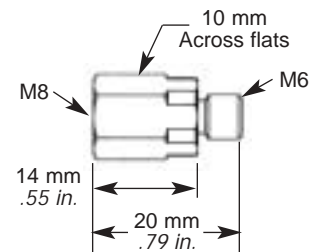


Hose Specifications

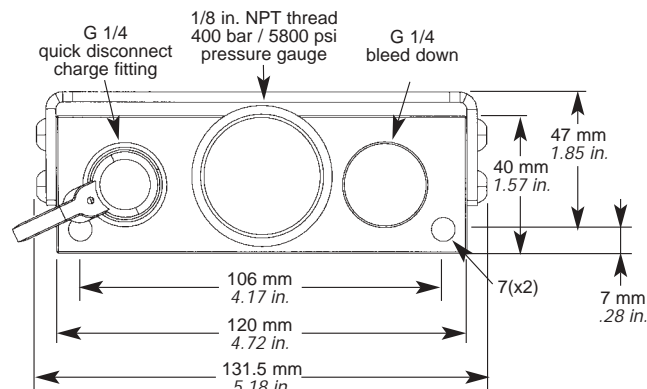
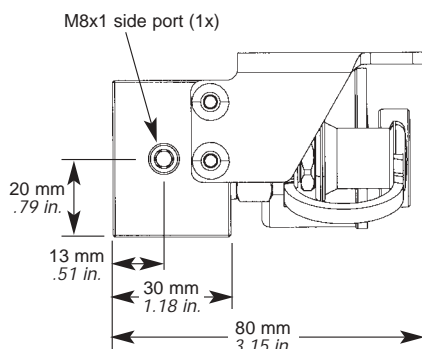
ID	2mm/.08 in.
OD	5mm/.20 in.
Burst Pressure	2000 bar/29000 psi
Min. Bend Radius	20mm/.79 in.

Dimension Examples

Hose Part No.	L mm/in.
EZH-2-M8-0200	200/7.9
EZH-2-M8-0300	300/11.8
EZH-2-M8-0400	400/15.7



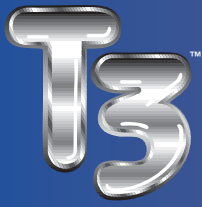
CP-N2-EZ



Spring to M8 Hose Straight Fitting - EZ-503763

From M6 spring to M8 EZ hose end (For T3-170 through T3-2400)

For more information, refer to the Micro EZ Hose brochure.



Force Charts

T3-170

Utilized Stroke	mm	in	mm	in	mm	in	mm	in	mm	in	mm	in	mm	in	mm	in	mm	in	mm	in	mm	in	mm	in
	7	0.28	10	0.39	15	0.59	19	0.75	25	0.98	38	1.50	50	1.97	63	2.48	75	2.95	80	3.15	100	3.94	125	4.92
	N	lb.	N	lb.	N	lb.	N	lb.	N	lb.	N	lb.	N	lb.	N	lb.	N	lb.	N	lb.	N	lb.	N	lb.
T3-170X7	2856	642																						
T3-170X10	2369	532	2839	638																				
T3-170X15	2100	472	2327	523	2839	638																		
T3-170X19	2003	450	2163	486	2492	560	2839	638																
T3-170X25	1924	432	2033	457	2246	505	2450	551	2839	638														
T3-170X38	1844	414	1908	429	2025	455	2129	479	2308	519	2822	634												
T3-170X50	1810	407	1856	417	1939	436	2011	452	2129	479	2441	548	2822	634										
T3-170X63	1788	402	1824	410	1887	424	1941	436	2027	455	2243	504	2488	559	2822	634								
T3-170X75	1776	399	1806	406	1858	417	1902	427	1971	443	2141	481	2327	523	2567	577	2839	638						
T3-170X80	1772	398	1799	404	1848	415	1888	424	1953	439	2108	474	2275	511	2489	559	2726	613	2839	638				
T3-350X100	1759	395	1781	400	1818	409	1850	416	1899	427	2014	453	2134	480	2281	513	2437	548	2508	564	2839	638		
T3-350X125	1749	393	1766	397	1796	404	1820	409	1858	417	1945	437	2033	457	2139	481	2246	505	2294	515	2508	564	2838.6	638

T3-320

Utilized Stroke	mm	in	mm	in	mm	in	mm	in	mm	in	mm	in	mm	in	mm	in	mm	in	mm	in	mm	in	mm	in
	7	0.28	10	0.39	15	0.59	19	0.75	25	0.98	38	1.50	50	1.97	63	2.48	75	2.95	80	3.15	100	3.94	125	4.92
	N	lb.	N	lb.	N	lb.	N	lb.	N	lb.	N	lb.	N	lb.	N	lb.	N	lb.	N	lb.	N	lb.	N	lb.
T3-320X7	4771	1,072																						
T3-320X10	4232	951	4930	1,108																				
T3-320X15	3847	865	4226	950	5058	1,137																		
T3-320X19	3697	831	3973	893	4141	1,020	5185	1,165																
T3-320X25	3567	802	3763	846	3773	931	4504	1,012	5185	1,165														
T3-320X38	3432	771	3553	798	3773	848	3970	892	4308	968	5280	1,187												
T3-320X50	3370	757	3458	777	3616	813	3753	843	3979	894	4576	1,028	5312	1,194										
T3-320X63	3331	748	3399	764	3520	791	3623	814	3790	852	4208	946	4686	1,053	5344	1,201								
T3-320X75	3302	742	3357	754	3453	776	3533	794	3662	823	3974	893	4314	969	4754	1,068	5248	1,179						
T3-320X80	3294	740	3346	752	3435	772	3509	789	3627	815	3913	879	4220	948	4611	1,036	5044	1,133	5248	1,179				
T3-320X100	3272	735	3313	744	3383	760	3441	773	3532	794	3747	842	3970	892	4244	954	4532	1,019	4665	1,048	5280	1,187		
T3-320X125	3254	731	3286	739	3342	751	3387	761	3458	777	3623	814	3789	851	3987	896	4189	941	4280	962	4684	1,053	5312	1,194

T3-350

Utilized Stroke	mm	in	mm	in	mm	in	mm	in	mm	in	mm	in	mm	in	mm	in	mm	in	mm	in	mm	in	mm	in
	10	0.39	13	0.51	16	0.63	19	0.75	25	0.98	32	1.26	38	1.50	50	1.97	63	2.48	75	2.95	80	3.15	100	3.94
	N	lb.	N	lb.	N	lb.	N	lb.	N	lb.	N	lb.	N	lb.	N	lb.	N	lb.	N	lb.	N	lb.	N	lb.
T3-350X10	5,900	1,325																						
T3-350X13	5,050	1,135	5,200	1,170																				
T3-350X16	4,769	1,072	5,134	1,154	5,300	1,190																		
T3-350X19	4,576	1,029	4,884	1,098	5,192	1,167	5,600	1,260																
T3-350X25	4,330	973	4,564	1,026	4,798	1,079	5,032	1,131	5,500	1,235														
T3-350X32	4,159	935	4,342	976	4,525	1,017	4,708	1,058	5,073	1,141	5,500	1,235												
T3-350X38	4,063	913	4,217	948	4,371	983	4,525	1,017	4,833	1,086	5,192	1,167	5,500	1,235										
T3-350X50	3,940	886	4,057	912	4,174	938	4,291	965	4,525	1,017	4,798	1,079	5,032	1,131	5,500	1,235								
T3-350X63	3,860	868	3,952	888	4,045	909	4,138	930	4,324	972	4,540	1,021	4,726	1,062	5,098	1,146	5,500	1,235						
T3-350X75	3,810	856	3,888	874	3,966	892	4,044	909	4,200	944	4,382	985	4,538	1,020	4,850	1,090	5,188	1,166	5,500	1,235				
T3-350X80	3,794	853	3,867	869	3,940	886	4,013	902	4,159	935	4,330	973	4,476	1,006	4,769	1,072	5,086	1,143	5,378	1,209	5,500	1,235		
T3-350X100	3,745	842	3,804	855	3,862	868	3,921	881	4,038	908	4,174	938	4,291	965	4,525	1,017	4,779	1,074	5,013	1,127	5,110	1,149	5,500	1,235
T3-350X125	3,706	833	3,753	844	3,800	854	3,846	865	3,940	886	4,049	910	4,143	937	4,330	973	4,533	1,019	4,720	1,061	4,798	1,079	5,110	1,149

Force Charts

T3-500

Utilized Stroke	mm	in	mm	in	mm	in	mm	in	mm	in	mm	in	mm	in	mm	in	mm	in	mm	in	mm	in	mm	in
	10	0.39	13	0.51	16	0.63	19	0.75	25	0.98	32	1.26	38	1.50	50	1.97	63	2.48	75	2.95	80	3.15	100	3.94
	N	lb.	N	lb.	N	lb.	N	lb.	N	lb.	N	lb.	N	lb.	N	lb.	N	lb.	N	lb.	N	lb.	N	lb.
T3-500X10	7,200	1,620																						
T3-500X13	6,607	1,485	7,100	1,595																				
T3-500X16	6,236	1,402	6,718	1,510	7,200	1,620																		
T3-500X19	5,983	1,345	6,388	1,436	6,794	1,527	7,400	1,665																
T3-500X25	5,658	1,272	5,966	1,341	6,275	1,411	6,583	1,480	7,300	1,640														
T3-350X32	5,433	1,221	5,674	1,276	5,915	1,330	6,156	1,384	6,638	1,492	7,200	1,620												
T3-500X38	5,306	1,193	5,509	1,238	5,712	1,284	5,915	1,330	6,321	1,421	6,794	1,527	7,200	1,620										
T3-500X50	5,144	1,156	5,298	1,191	5,452	1,226	5,607	1,260	5,915	1,330	6,275	1,411	6,583	1,480	7,200	1,620								
T3-500X63	5,038	1,133	5,160	1,160	5,283	1,188	5,405	1,215	5,650	1,270	5,935	1,334	6,180	1,389	6,670	1,499	7,200	1,620						
T3-350X75	4,973	1,118	5,075	1,141	5,178	1,164	5,281	1,187	5,487	1,233	5,727	1,287	5,932	1,334	6,343	1,426	6,789	1,526	7,100	1,595				
T3-500X80	4,951	1,113	5,048	1,135	5,144	1,156	5,240	1,178	5,433	1,221	5,658	1,272	5,851	1,315	6,236	1,402	6,654	1,496	7,039	1,582	7,100	1,595		
T3-500X100	4,887	1,099	4,964	1,116	5,041	1,133	5,118	1,151	5,273	1,185	5,452	1,226	5,607	1,260	5,915	1,330	6,249	1,405	6,558	1,474	6,686	1,503	7,100	1,595
T3-500X125	4,836	1,087	4,897	1,101	4,959	1,115	5,021	1,129	5,144	1,156	5,288	1,189	5,411	1,216	5,658	1,272	5,925	1,332	6,172	1,387	6,275	1,411	6,686	1,503

T3-750

Utilized Stroke	mm	in	mm	in	mm	in	mm	in	mm	in	mm	in	mm	in	mm	in	mm	in	mm	in	mm	in		
	16	0.63	19	0.75	25	0.98	32	1.26	38	1.50	50	1.97	63	2.48	75	2.95	80	3.15	100	3.94	125	4.92		
	N	lb.	N	lb.	N	lb.	N	lb.	N	lb.	N	lb.	N	lb.	N	lb.	N	lb.	N	lb.	N	lb.		
T3-750X16	12,100	2,720																						
T3-750X19	11,190	2,516	11,700	2,630																				
T3-750X25	10,281	2,311	10,821	2,433	11,800	2,655																		
T3-750X32	9,651	2,169	10,072	2,264	10,916	2,454	11,800	2,655																
T3-750X38	9,295	2,090	9,651	2,169	10,361	2,329	11,190	2,516	11,800	2,655														
T3-750X50	8,840	1,987	9,110	2,048	9,651	2,169	10,281	2,311	10,821	2,433	11,800	2,655												
T3-750X63	8,543	1,920	8,757	1,969	9,186	2,065	9,686	2,177	10,115	2,274	10,972	2,467	11,800	2,655										
T3-750X75	8,360	1,879	8,540	1,920	8,900	2,001	9,320	2,095	9,681	2,176	10,401	2,338	11,181	2,513	11,900	2,675								
T3-750X80	8,300	1,866	8,469	1,904	8,807	1,980	9,200	2,068	9,538	2,144	10,213	2,296	10,945	2,460	11,620	2,612	11,900	2,675						
T3-750X100	8,120	1,825	8,255	1,856	8,525	1,916	8,840	1,987	9,110	2,048	9,651	2,169	10,236	2,301	10,776	2,422	11,001	2,473	11,900	2,675				
T3-750X125	7,976	1,793	8,084	1,817	8,300	1,866	8,552	1,923	8,768	1,971	9,200	2,068	9,669	2,173	10,101	2,271	10,281	2,311	11,001	2,473	11,900	2,675		

T3-1000

Utilized Stroke	mm	in	mm	in	mm	in	mm	in	mm	in	mm	in	mm	in	mm	in	mm	in	mm	in	mm	in	mm	in	
	13	0.51	16	0.63	19	0.75	25	0.98	32	1.26	38	1.50	50	1.97	63	2.48	75	2.95	80	3.15	100	3.94	125	4.92	
	N	lb.	N	lb.	N	lb.	N	lb.	N	lb.	N	lb.	N	lb.	N	lb.	N	lb.	N	lb.	N	lb.	N	lb.	
T3-1000X13	13,800	3,105																							
T3-1000X16	13,100	2,945	13,800	3,105																					
T3-1000X19	12,484	2,806	13,242	2,977	14,000	3,145																			
T3-1000X25	11,696	2,629	12,272	2,759	12,848	2,888	14,200	3,190																	
T3-1000X32	11,150	2,507	11,600	2,608	12,050	2,709	12,950	2,911	14,300	3,215															
T3-1000X38	10,842	2,437	11,221	2,522	11,600	2,608	12,358	2,778	13,242	2,977	14,500	3,260													
T3-1000X50	10,448	2,349	10,736	2,413	11,024	2,478	11,600	2,608	12,272	2,759	12,848	2,888	14,600	3,280											
T3-1000X63	10,190	2,291	10,419	2,342	10,648	2,394	11,105	2,496	11,638	2,616	12,095	2,719	13,010	2,925	14,700	3,305									
T3-1000X75	10,032	2,255	10,224	2,298	10,416	2,342	10,800	2,428	11,248	2,529	11,632	2,615	12,400	2,788	13,232	2,975	14,700	3,305							
T3-1000X80	9,980	2,244	10,160	2,284	10,340	2,324	10,700	2,405	11,120	2,500	11,480	2,581	12,200	2,743	12,980	2,918	13,700	3,080	14,800	3,325					
T3-1000X100	9,824	2,208	9,968	2,241	10,112	2,273	10,400	2,338	10,736	2,413	11,024	2,478	11,600	2,608	12,224	2,748	12,800	2,877	13,040	2,931	14,800	3,325			
T3-1000X125	9,699	2,180	9,814	2,206	9,930	2,232	10,160	2,284	10,429	2,344	10,659	2,396	11,120	2,500	11,619	2,612	12,080	2,716	12,272	2,759	13,040	2,931	14,800	3,325	



Force Charts

T3-1500

Utilized Stroke	mm	in	mm	in	mm	in	mm	in	mm	in	mm	in	mm	in	mm	in	mm	in	mm	in	mm	in	mm	in
	13	0.51	16	0.63	19	0.75	25	0.98	32	1.26	38	1.50	50	1.97	63	2.48	75	2.95	80	3.15	100	3.94	125	4.92
	N	lb.	N	lb.	N	lb.	N	lb.	N	lb.	N	lb.	N	lb.	N	lb.	N	lb.	N	lb.	N	lb.	N	lb.
T3-1500X13	24006	5,395																						
T3-1500X16	21742	4,886	24099	5,416																				
T3-1500X19	20409	4,586	22129	4,973	24164	5,430																		
T3-1500X25	18910	4,249	20011	4,497	21249	4,775	24249	5,449																
T3-1500X32	17861	4,014	18590	4,177	19380	4,355	21182	4,760	23758	5,339														
T3-1500X38	17415	3,914	17999	4,045	18624	4,185	20013	4,497	21921	4,926	23871	5,364												
T3-1500X50	16866	3,790	17283	3,884	17722	3,982	18669	4,195	19911	4,474	21115	4,745	24020	5,398										
T3-1500X63	16521	3,713	16840	3,784	17171	3,859	17875	4,017	18773	4,219	19617	4,408	21555	4,844	24140	5,425								
T3-1500X75	16312	3,666	16573	3,724	16843	3,785	17410	3,912	18122	4,072	18780	4,220	20251	4,551	22129	4,973	24200	5,438						
T3-1500X80	16244	3,650	16487	3,705	16737	3,761	17262	3,879	17917	4,026	18519	4,162	19855	4,462	21537	4,840	23364	5,250	24220	5,443				
T3-1500X100	16042	3,605	16232	3,648	16427	3,691	16830	3,782	17326	3,893	17775	3,994	18747	4,213	19928	4,478	21158	4,755	21716	4,880	24280	5,456		
T3-1500X125	15883	3,569	16032	3,603	16184	3,637	16497	3,707	16877	3,793	17217	3,869	17941	4,032	18796	4,224	19661	4,418	20046	4,505	21747	4,887	24328	5,467

T3-2400

Utilized Stroke	mm	in	mm	in	mm	in	mm	in	mm	in	mm	in	mm	in	mm	in	mm	in	mm	in	mm	in	mm	in
	16	0.63	19	0.75	25	0.98	32	1.26	38	1.50	50	1.97	63	2.48	75	2.95	80	3.15	100	3.94	125	4.92		
	N	lb.	N	lb.	N	lb.	N	lb.	N	lb.	N	lb.	N	lb.	N	lb.	N	lb.	N	lb.	N	lb.	N	lb.
T3-2400X16	38,300	8,610																						
T3-2400X19	35,789	8,045	38,500	8,655																				
T3-2400X25	32,960	7,409	34,640	7,787	38,700	8,700																		
T3-2400X32	31,000	6,969	32,313	7,264	34,938	7,854	38,600	8,680																
T3-2400X38	29,895	6,720	31,000	6,969	33,211	7,466	35,789	8,045	38,400	8,635														
T3-2400X50	28,480	6,402	29,320	6,591	31,000	6,969	32,960	7,409	34,640	7,787	39,200	8,815												
T3-2400X63	27,556	6,194	28,222	6,344	29,556	6,644	31,111	6,994	32,444	7,294	35,111	7,893	39,200	8,815										
T3-2400X75	26,987	6,067	27,547	6,192	28,667	6,444	29,973	6,738	31,093	6,990	33,333	7,493	35,760	8,039	39,200	8,815								
T3-2400X80	26,800	6,025	27,325	6,143	28,375	6,379	29,600	6,654	30,650	6,890	32,750	7,362	35,025	7,874	37,125	8,346	39,200	8,815						
T3-2400X100	26,240	5,899	26,660	5,993	27,500	6,182	28,480	6,402	29,320	6,591	31,000	6,969	32,820	7,378	34,500	7,756	35,200	7,913	39,300	8,835				
T3-2400X125	25,792	5,798	26,128	5,874	26,800	6,025	27,584	6,201	28,256	6,352	29,600	6,654	31,056	6,981	32,400	7,284	32,960	7,409	35,200	7,913	39,300	8,835		

T3-4200

Utilized Stroke	mm	in	mm	in	mm	in	mm	in	mm	in	mm	in	mm	in	mm	in	mm	in	mm	in	mm	in	mm	in
	16	0.63	19	0.75	25	0.98	32	1.26	38	1.50	50	1.97	63	2.48	75	2.95	80	3.15	100	3.94	125	4.92		
	N	lb.	N	lb.	N	lb.	N	lb.	N	lb.	N	lb.	N	lb.	N	lb.	N	lb.	N	lb.	N	lb.	N	lb.
T3-4200X16	61,700	13,870																						
T3-4200X19	62,211	13,985	63,700	14,320																				
T3-4200X25	57,360	12,895	60,240	13,542	60,800	13,670																		
T3-4200X32	54,000	12,139	56,250	12,645	60,750	13,657	64,300	14,555																
T3-4200X38	52,105	11,713	54,000	12,139	57,789	12,991	62,211	13,985	65,800	14,795														
T3-4200X50	49,680	11,168	51,120	11,492	54,000	12,139	57,360	12,895	60,240	13,542	67,000	15,065												
T3-4200X63	48,095	10,812	49,238	11,069	51,524	11,583	54,190	12,182	56,476	12,696	61,048	13,724	67,800	15,245										
T3-4200X75	47,120	10,593	48,080	10,808	50,000	11,240	52,240	11,744	54,160	12,175	58,000	13,038	62,160	13,974	68,000	15,290								
T3-4200X80	46,800	10,521	47,700	10,723	49,500	11,128	51,600	11,600	53,400	12,004	57,000	12,814	60,900	13,690	64,500	14,500	68,600	15,425						
T3-4200X100	45,840	10,305	46,560	10,467	48,000	10,790	49,680	11,168	51,120	11,492	54,000	12,139	57,120	12,841	60,000	13,488	61,200	13,758	69,100	15,535				

Force Charts

T3-6600

Utilized Stroke	mm	in	mm	in	mm	in	mm	in	mm	in	mm	in	mm	in	mm	in	mm	in	mm	in	mm	in
	16	0.63	19	0.75	25	0.98	32	1.26	38	1.50	50	1.97	63	2.48	75	2.95	80	3.15	100	3.94	125	4.92
	N	lb.	N	lb.	N	lb.	N	lb.	N	lb.	N	lb.	N	lb.	N	lb.	N	lb.	N	lb.	N	lb.
T3-6600X16	89,000	20,010																				
T3-6600X19	99,921	21,113	91,000	20,460																		
T3-6600X25	87,292	19,623	91,228	20,508	93,900	21,110																
T3-6600X32	82,700	18,591	85,775	19,282	91,925	20,665	96,100	21,605														
T3-6600X38	80,111	18,009	82,700	18,591	87,879	19,775	93,921	21,113	98,200	22,075												
T3-6600X50	76,796	17,264	78,764	17,706	82,700	18,591	87,292	19,623	91,228	20,508	100,600	22,615										
T3-6600X63	74,630	16,777	76,192	17,128	79,316	17,830	82,960	18,649	86,084	19,352	92,332	20,756	102,400	23,020								
T3-6600X75	73,297	16,477	74,609	16,772	77,233	17,362	80,295	18,050	82,919	18,640	88,167	19,820	93,852	21,098	103,400	23,245						
T3-6600X80	72,860	16,379	74,090	16,655	76,550	17,208	79,420	17,854	81,880	18,407	86,800	19,513	92,130	20,711	97,050	21,817	104,100	23,405				
T3-6600X100	71,548	16,084	72,532	16,305	74,500	16,748	76,796	17,264	78,764	17,706	82,700	18,591	86,964	19,550	90,900	20,434	92,540	20,803	105,400	23,695		
T3-6600X125	70,498	15,848	71,286	16,025	72,860	16,379	74,697	16,792	76,271	17,146	79,420	17,854	82,831	18,620	85,980	19,328	87,292	19,623	92,540	20,803	106,500	23,945

T3-9500

Utilized Stroke	mm	in	mm	in	mm	in	mm	in	mm	in	mm	in	mm	in	mm	in	mm	in	mm	in		
	19	0.75	25	0.98	32	1.26	38	1.50	50	1.97	63	2.48	75	2.95	80	3.15	100	3.94	125	4.92		
	N	lb.	N	lb.	N	lb.	N	lb.	N	lb.	N	lb.	N	lb.	N	lb.	N	lb.	N	lb.		
T3-9500X19	135,000	30,350																				
T3-9500X25	132,582	29,794	139,000	31,250																		
T3-9500X32	122,669	27,566	134,825	30,298	142,000	31,925																
T3-9500X38	117,599	26,427	126,911	28,519	139,829	31,422	143,000	32,150														
T3-9500X50	111,584	25,075	117,888	26,492	126,206	28,361	134,330	30,187	146,000	32,825												
T3-9500X63	107,914	24,250	112,566	25,296	118,528	26,635	124,164	27,902	137,213	33,034	148,000	33,275										
T3-9500X75	105,749	23,764	109,490	24,604	114,202	25,663	118,577	26,647	128,415	28,857	141,098	31,707	149,000	33,500								
T3-9500X80	105,054	23,608	108,511	24,385	112,844	25,358	116,843	26,257	125,756	28,260	137,084	30,805	149,517	33,599	150,000	33,725						
T3-9500X100	103,011	23,148	105,663	23,744	108,935	24,480	111,905	25,147	118,360	26,598	126,249	28,370	134,525	30,230	138,303	31,079	151,000	33,950				
T3-9500X125	101,420	22,791	103,473	23,252	105,975	23,815	108,218	24,319	113,002	25,394	118,686	26,671	124,465	27,970	127,042	28,549	138,515	31,127	152,000	34,175		

Dynamic Solutions



Super Tanker® Gas Springs



Nitro-Dyne® XP Manifolds



Mini Manifolds



Force Manager™ Systems



T3 Gas Springs



Adaptive Cams



Mechanical Cams



T2 Standard Gas Springs



Controllable Systems



Lift Strut Gas Springs



Accessories



ISO Die Springs

For a Global Market



Hyson™ Products
Associated Spring 

10367 Brecksville Road, Brecksville, Ohio 44141 USA
Toll Free: 1-800-876-4976 • Tel: 440-526-5900 • FAX: 440-838-7684
Email: hyson@asbg.com • www.hysonproducts.com

© Hyson Products 2005
T35M0505